

POISONOUS TO FISH AND WILDLIFE
 This product is extremely toxic to fish and other wild life. Do not use in or near water. Do not use in or near areas where wild life is abundant. Do not use in or near areas where wild life is abundant. Do not use in or near areas where wild life is abundant.

Do not use in or near areas where wild life is abundant. Do not use in or near areas where wild life is abundant. Do not use in or near areas where wild life is abundant.

POISON SIGNS (SYMPTOMS)
 Methyl Parathion is a dimethyl phosphorothioate. It rapidly enters the body on contact with skin surfaces of eyes. Clothing wet with this material must be removed immediately. Exposed persons must receive prompt medical treatment or they may die.

Some of the signs and symptoms of poisoning are: Headache, nausea, vomiting, dizziness, weakness, blurred vision, pinpoint pupils, faintness, in chest, labored breathing, nervousness, sweating, watering of eyes, drooping of forehead, it mouth and nose, muscle tremors and convulsions.

FIRST AID TREATMENT
 Call a doctor or take patient to clinic or hospital immediately. Explain that the victim has been exposed to Parathion and describe his condition.

IF BREATHING HAS STOPPED, start artificial respiration immediately, and maintain until doctor sees victim.

IF SWALLOWED, and the victim is awake, administer milk, fruit, or water quickly. Induce vomiting by sticking finger down throat or by using salt. If strong salty water is to be used, repeat until vomit is clear. Never give anything by mouth to an unconscious person. Have victim lie down and keep quiet. See doctor immediately.

IN CASE OF CONTACT immediately flush eyes or skin with plenty of water for at least 15 minutes while removing contaminated clothing and shoes. See doctor immediately.

NOTE TO PHYSICIAN
 Antidote: Administer atropine sulfate in large doses, two to four mg. intravenously or intramuscularly as soon as diagnosis is overcome. Repeat at 5 to 10 minute intervals until signs of atropinization appear. 2-PAM chloride is also antidotal and may be administered in conjunction with atropine. **DO NOT GIVE MORPHINE OR TRANQUILIZERS.** Parathion is a strong cholinesterase inhibitor affecting the central and peripheral nervous systems and producing cardiac and respiratory depression. At first sign of pulmonary edema, the patient should be given supplemental oxygen and treated symptomatically. Continued absorption of the poison may occur and fatal relapses have been reported after mild improvement. **VERY CLOSE SUPERVISION OF THE PATIENT IS INDICATED FOR AT LEAST 48 HOURS.**

Toxaphene produces central nervous system excitation which ordinarily responds to barbiturate and derivatives, but this drug should be considered only a complete atropinization fails to relieve symptoms.

USE ONLY WHEN WEARING THE FOLLOWING PROTECTIVE EQUIPMENT AND CLOTHING

(1) Wear water proof pants, long sleeve shirt, and rubber overshoes. (2) Wear protective goggles. (3) Wear mask or respirator approved by the U.S. Bureau of Mines for protection against (4) Wear gloves. (5) Wear a hat.

WORK SAFETY RULES
 Do not use equipment in areas where there is a high concentration of dust.

Do not rub eyes or mouth with hands. If you feel sick or unwell, STOP work and get help right away. Call a doctor or physician or go to hospital immediately. Explain that the victim has been exposed to parathion and toxaphene and that. After treatment is given call First Aid Treatment Section and that doctor can not come. Ask victim to come to hospital.

IMPORTANT: Before removing gloves, wash them with soap and water. Always wash hands, face and arms with soap and water before smoking, eating or drinking.

AFTER WORK take off all work clothes and shoes. Shower, using soap and water. Wear only clean clothes when leaving job. Do not wear contaminated clothing. Wash protective clothing and protective equipment with soap and water after each use. Respirator should be cleaned and filter replaced according to instructions included with respirator.

DIRECTIONS FOR USE
IMPORTANT: Read these entire Directions and Conditions of Sale, including the warranty and limitation of damages. Notice, before using METHYL PARATHION-TOXAPHENE 3-6 EC.

CONDITIONS OF SALE These Directions for Use reflect the opinion of experts based on tests of effectiveness, of toxicity to plants and laboratory animals and of residues on or in food and feed, under normal conditions of use. However, because of the wide range of conditions under which this product may be used, even though label directions are followed, it is impossible to eliminate all risks associated with its use because of abnormal conditions beyond the control of the seller, Rohm and Haas Company, and the seller of the Bayer uses, this product subject to the understanding that the Bayer assumes all such risks.

MIXING: METHYL PARATHION-TOXAPHENE 3-6 EC forms an emulsion when diluted with water and is suitable for use in all power-operated ground sprayers and aircraft sprayers. To mix with water, pour the required amount of the product into the full amount of water required for application. Agitate the mixture during application.

DOSAGE: Use specified dosage of this product in the amount of water necessary to give complete coverage of foliage. The type of equipment used will determine the concentration required.

DISPOSAL OF EMPTY CONTAINER
 Do not reuse this container. Completely empty the content and bury the unused chemical at least 18 inches deep in an isolated area away from water supplies. Rinse out the inside of the container with water to which has been added detergent and caustic soda. Carefully discard the rinse solution by pouring at least 18 inches deep in an isolated area away from water supplies. Paint cans and other empty metal containers and bury at least 18 inches deep in a separate public or private dump.

POST TREATED AREA
 Consult your State Agricultural Experiment Station or Extension Service for proper post-treatment procedures.

DO NOT USE, POUR, SPILL, OR STORE NEAR HEAT OR OPEN FLAME. DO NOT STORE BELOW 32 DEGREES F

See side panels for antidote and precautions



CAN KILL YOU NOT FOR HOME USE

Keep out of reach of children

Methyl Parathion-Toxaphene 3-6 EC

An emulsifiable concentrate for effective control of certain insects and mites

ACTIVE INGREDIENTS:

0,0 Dimethyl O-(p-nitrophenyl) phosphorothioate*	25.8%
Toxaphene**	51.5%
Xylene	8.0%
INERT INGREDIENTS	14.7%
Total	100.0%

*Methyl Parathion
 **Technical Chlorinated Camphene (Chlorine Content 67-69%)
 Contains 3 lbs. Methyl Parathion and 6 lbs. of Toxaphene per gallon.

EPA Reg. No. 960-195

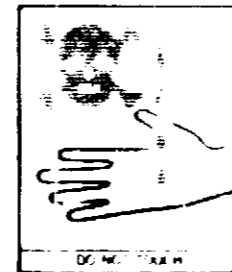
NET CONTENTS U.S. GAL

DANGER—POISON—PRECAUTIONS



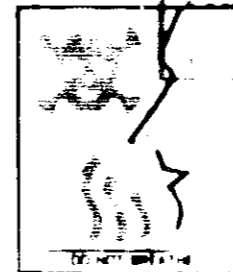
CAN KILL YOU IF SWALLOWED

This product can kill you if swallowed. Do not swallow. If swallowed, do not induce vomiting. Call a doctor immediately.



CAN KILL YOU BY SKIN CONTACT

This product can kill you if touched by hands or exposed or splashed on skin. Do not touch. Wash hands and exposed skin with soap and water immediately.



CAN KILL YOU IF BREATHED

This product can kill you if inhaled. Do not breathe vapors. Do not use in enclosed spaces.

	RECOMMENDED APPLICATIONS	DOSAGE RATE (lb. per Acre)
Apples	Control of codling moth, apple maggot, and other fruit pests.	1.0 to 1.5
Avocado	Control of scale, mealybugs, and other pests.	1.0 to 1.5
Bananas	Control of banana weevil, banana borer, and other pests.	1.0 to 1.5
Citrus	Control of citrus scale, citrus mealybug, and other pests.	1.0 to 1.5
Coconut	Control of coconut scale, coconut mealybug, and other pests.	1.0 to 1.5
Cotton	Control of cotton bollworm, cotton leafworm, and other pests.	1.0 to 1.5
Guava	Control of guava scale, guava mealybug, and other pests.	1.0 to 1.5
Jackfruit	Control of jackfruit scale, jackfruit mealybug, and other pests.	1.0 to 1.5
Lychee	Control of lychee scale, lychee mealybug, and other pests.	1.0 to 1.5
Mango	Control of mango scale, mango mealybug, and other pests.	1.0 to 1.5
Orange	Control of orange scale, orange mealybug, and other pests.	1.0 to 1.5
Peach	Control of peach scale, peach mealybug, and other pests.	1.0 to 1.5
Pineapple	Control of pineapple scale, pineapple mealybug, and other pests.	1.0 to 1.5
Plantain	Control of plantain scale, plantain mealybug, and other pests.	1.0 to 1.5
Prune	Control of prune scale, prune mealybug, and other pests.	1.0 to 1.5
Quince	Control of quince scale, quince mealybug, and other pests.	1.0 to 1.5
Rubber	Control of rubber scale, rubber mealybug, and other pests.	1.0 to 1.5
Shaddock	Control of shaddock scale, shaddock mealybug, and other pests.	1.0 to 1.5
Small Grains	Control of grain aphid, grain beetle, and other pests.	1.0 to 1.5
Soybean	Control of soybean scale, soybean mealybug, and other pests.	1.0 to 1.5
Strawberry	Control of strawberry scale, strawberry mealybug, and other pests.	1.0 to 1.5
Tangerine	Control of tangerine scale, tangerine mealybug, and other pests.	1.0 to 1.5
Watermelon	Control of watermelon scale, watermelon mealybug, and other pests.	1.0 to 1.5
Walnut	Control of walnut scale, walnut mealybug, and other pests.	1.0 to 1.5
Yam	Control of yam scale, yam mealybug, and other pests.	1.0 to 1.5

NOTICE
 This product is extremely toxic to fish and other wild life. Do not use in or near water. Do not use in or near areas where wild life is abundant. Do not use in or near areas where wild life is abundant.

Keep out of reach
of children



NOT FOR HOME USE

Parathion-Toxaphene 3-6 EC

Concentrate for effective control of certain insects and mites

INGREDIENTS:

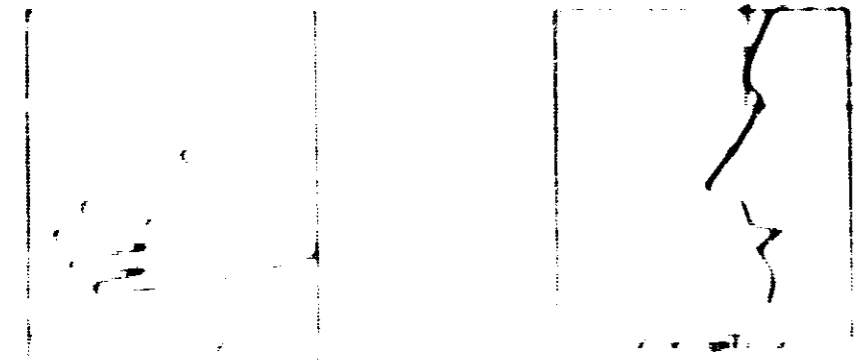
Diethyl (p-nitrophenyl) phosphorothioate*	25.8%
1,1,1-Trichloro-2,2,2-trifluoroethane	51.5%
Diethylamine	8.0%
INERTS	14.7%
Total	100.0%

1,1,1-Trichloro-2,2,2-trifluoroethane (Chlorine Content 57.69%)

Diethyl Parathion and 6 lbs. of Toxaphene per gallon

EPA Reg. No. 356-195

DANGER POISON PRECAUTIONS



CROP	DISEASE	REMARKS
Apple	Apple Maggot, Apple Worm, Apple Borer, Apple Aphid, Apple Scale, Apple Mite, Apple Leaf Miner, Apple Root Weevil, Apple Bark Beetle, Apple Blight, Apple Scab, Apple Rust, Apple Anthracnose, Apple Fire Blight, Apple Canker, Apple Collar Rot, Apple Root Rot, Apple Crown Rot, Apple Trunk Rot, Apple Stem Girdler, Apple Stem Weevil, Apple Stem Borer, Apple Stem Nematode, Apple Stem Girdler, Apple Stem Weevil, Apple Stem Borer, Apple Stem Nematode	Apply 1/2 to 1 gallon per acre, depending on crop and pest. Repeat applications as needed. Do not apply to fruit.
Barley	Barley Yellow Leaf, Barley Green Leafhopper, Barley Aphid, Barley Mite, Barley Root Weevil, Barley Stem Girdler, Barley Stem Weevil, Barley Stem Borer, Barley Stem Nematode	Apply 1/2 to 1 gallon per acre, depending on crop and pest. Repeat applications as needed. Do not apply to fruit.
Corn	Corn Earworm, Corn Rootworm, Corn Aphid, Corn Mite, Corn Root Weevil, Corn Stem Girdler, Corn Stem Weevil, Corn Stem Borer, Corn Stem Nematode	Apply 1/2 to 1 gallon per acre, depending on crop and pest. Repeat applications as needed. Do not apply to fruit.
Cotton	Cotton Bollworm, Cotton Rootworm, Cotton Aphid, Cotton Mite, Cotton Root Weevil, Cotton Stem Girdler, Cotton Stem Weevil, Cotton Stem Borer, Cotton Stem Nematode	Apply 1/2 to 1 gallon per acre, depending on crop and pest. Repeat applications as needed. Do not apply to fruit.
Orange	Orange Blossom Weevil, Orange Blossom Aphid, Orange Blossom Mite, Orange Blossom Root Weevil, Orange Blossom Stem Girdler, Orange Blossom Stem Weevil, Orange Blossom Stem Borer, Orange Blossom Stem Nematode	Apply 1/2 to 1 gallon per acre, depending on crop and pest. Repeat applications as needed. Do not apply to fruit.
Pepper	Pepper Weevil, Pepper Rootworm, Pepper Aphid, Pepper Mite, Pepper Root Weevil, Pepper Stem Girdler, Pepper Stem Weevil, Pepper Stem Borer, Pepper Stem Nematode	Apply 1/2 to 1 gallon per acre, depending on crop and pest. Repeat applications as needed. Do not apply to fruit.
Small Grains	Small Grain Yellow Leaf, Small Grain Green Leafhopper, Small Grain Aphid, Small Grain Mite, Small Grain Root Weevil, Small Grain Stem Girdler, Small Grain Stem Weevil, Small Grain Stem Borer, Small Grain Stem Nematode	Apply 1/2 to 1 gallon per acre, depending on crop and pest. Repeat applications as needed. Do not apply to fruit.
Soybean	Soybean Aphid, Soybean Mite, Soybean Root Weevil, Soybean Stem Girdler, Soybean Stem Weevil, Soybean Stem Borer, Soybean Stem Nematode	Apply 1/2 to 1 gallon per acre, depending on crop and pest. Repeat applications as needed. Do not apply to fruit.
Tomato	Tomato Pinworm, Tomato Rootworm, Tomato Aphid, Tomato Mite, Tomato Root Weevil, Tomato Stem Girdler, Tomato Stem Weevil, Tomato Stem Borer, Tomato Stem Nematode	Apply 1/2 to 1 gallon per acre, depending on crop and pest. Repeat applications as needed. Do not apply to fruit.