

1908-3

DIRECTIONS

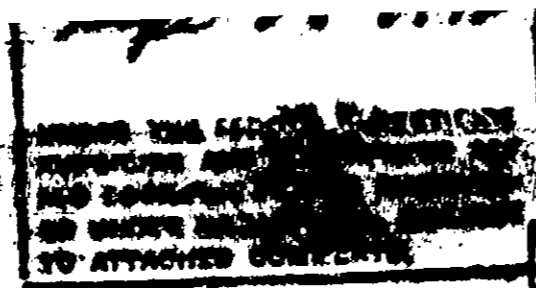
ROACHES, WATERBUGS, ANTS AND SILVERFISH: Spray ITSO so as to wet all cracks, crevices, and under tables, behind sinks, drainboards and cabinets; or wherever these insects may be seen or known to be. This will drive out and kill insects contacted.

FLIES AND MOSQUITOES: For use as a space spray close all windows and doors. Spray ITSO upwards to produce a thick mist. After about 10 minutes the dead insects may be swept up and the windows and doors opened.

Do not remain in treated areas.
Ventilate the area after treatment is completed.

CLOTHES MOTHS: Closets, chests, drawers, etc., should be thoroughly sprayed before clothing is placed in them. Contents should be carefully sprayed, both inside and out, paying particular attention to the folds and seams. In spraying delicate fabrics the sprayer nozzle should be held at least 2 feet from the material being treated. Rugs should be sprayed sufficiently on both sides so as to wet the surface.

5455 BUTLER ROAD



KILLS

ROACHES, WATERBUGS, MOTHS, FLIES, MOSQUITOES, ANTS, SILVERFISH, BEDBUGS, CARPET BEETLES, BUFFALO MOTHS.

*ITSO is designed to give quick action and great Killing Power on the above named insects.

STAINLESS

ACTIVE INGREDIENTS 100%

Consists of Deodorized Petroleum Distillate, Technical Piperonyl Butoxide,* Pyrethrins.

* (Butylcarbityl) (6-propylpiperonyl) ether and related compounds.

CAUTION

KEEP OUT OF THE REACH OF CHILDREN

Harmful if swallowed.
If swallowed do not induce vomiting.

Avoid contamination of food.

Foods should be removed or covered during treatment. All food processing surfaces should be covered during treatment or thoroughly cleaned before using. When using the product in these areas, apply only when the facility is not in operation. Remove pets, birds and fish and their cages or containers from room before spraying.

DO NOT USE, SPILL, POUR OR STORE NEAR HEAT OR OPEN FLAME

EPA Reg. No. 808-3

CONTENTS GALLON

Manufactured by
CAPITOL CHEMICAL COMPANY

Articles not stored in tight containers should be retreated at monthly intervals.

CARPET BEETLES AND BUFFALO MOTHS: In rooms infested with these insects, in addition to the procedure used for clothes moths, particular attention must be paid to direct the spray into all cracks in the flooring and behind baseboards.

BEDBUGS: Carefully treat all bedsteads and mattresses paying special attention to all hiding places. In the case of heavy infestations it may be necessary to spray all cracks and crevices about the room.

REPEAT APPLICATIONS AS NEEDED

NOTICE TO USERS

Do not reuse container.
Destroy when empty.

WASHINGTON, D. C. 20016

