

### HUMAN WARNING:

KEEP OUT OF REACH OF CHILDREN.  
MAY BE FATAL IF SWALLOWED.  
MAY BE ABSORBED THROUGH SKIN.  
MAY BE INJURIOUS TO EYES AND SKIN.  
COMBUSTIBLE.

Do not take internally. Do not get in eyes or on skin. Wash thoroughly after handling. Wash contaminated clothing before reuse. Flush contaminated eyes with plenty of water and get prompt medical attention. Avoid breathing vapors and spray mist. Keep away from food, feedstuffs, and domestic water supplies. Keep container closed. Handle concentrate in a ventilated area.

**NOTE TO PHYSICIAN:** Chlorpyrifos is a cholinesterase inhibitor. Treat symptomatically. Atropine is an antidote.

Remove pets and cover fish bowls (tanks) before spraying. Do not use in poultry houses or other animal buildings.

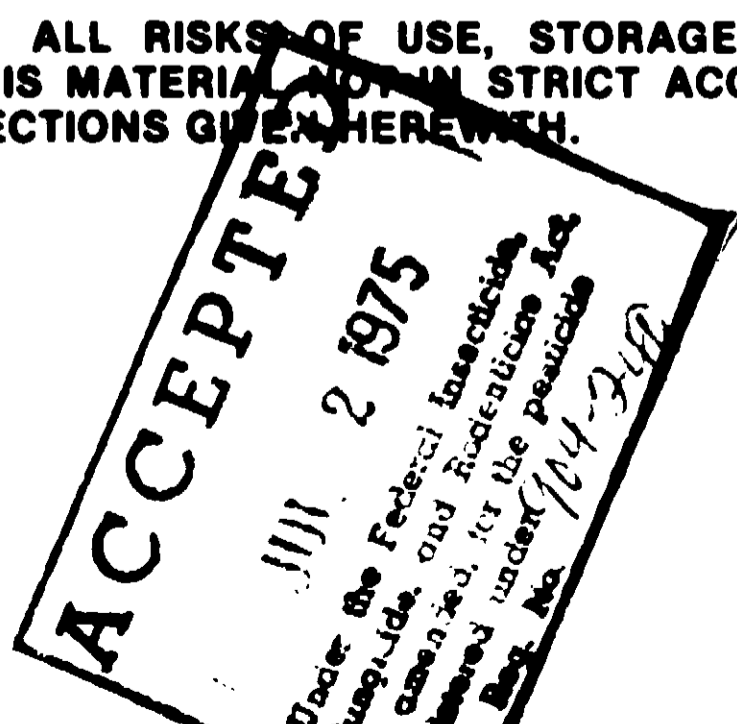
**FLAMMABILITY WARNING: COMBUSTIBLE LIQUID. DO NOT USE, POUR, SPILL OR STORE NEAR HEAT OR OPEN FLAME.**

### ENVIRONMENTAL CAUTION

This product is toxic to fish, birds, and other wildlife. Keep out of lakes, streams or ponds. Do not contaminate water by cleaning of equipment or disposal of wates. Apply this product only as specified on this label.

Do not reuse empty container. Destroy it by perforating or crushing. Bury or discard in a safe place away from water supplies. Do not reuse empty drum. Return to drum reconditioner or destroy by perforating or crushing and burying in a safe place away from water supplies.

**BUYER ASSUMES ALL RISKS OF USE, STORAGE OR HANDLING OF THIS MATERIAL NOT IN STRICT ACCORDANCE WITH DIRECTIONS GIVEN HEREWITH.**



**B.G.**



SINCE 1904  
TM

# DURSBAN 2 EC

An Insecticide For Use By Pest Control  
Operators Or Professional Applicators Only.

ACTIVE INGREDIENTS	BY WEIGHT
Chlorpyrifos (O, O-diethyl O-(3, 5, 6-trichloro-2-pyridyl) phosphorothioate) .....	24.9%
Aromatic petroleum derivative solvent .....	53.7%
INERT INGREDIENTS .....	21.4%
	TOTAL.....100.0%

Contains 2 pounds of chlorpyrifos per gallon.

\*DURSBAN® - Trademark of The Dow Chemical Company  
U.S. Patent No. 3,244,586.

EPA Reg. No. 904-240  
EPA Est. 904-NJ-1

### WARNING:

**KEEP OUT OF REACH OF CHILDREN.**

SEE SIDE PANEL FOR ADDITIONAL WARNINGS.

B.G. Pratt Division, Gabriel Chemicals Ltd.  
204 21st Avenue, Paterson, N.J. 07509

NET CONTENTS:     GALLONS  
1 5 30 55

### DIRECTIONS:

Dursban 2 EC is used in a amount of Dursban 2 EC oil or deodorant table. Use the cockroach infestation to quickly.

### AMOUNT SPREAD MIX DESIRED

1 gallon  
3 gallons  
5 gallons  
10 gallons

Use as a spot treatment with a paint brush to these areas in refrigerators, drainpipes. Apply to food, foodstuffs, food handling should they be

**NOTE:** A period required for treatment as ne

**DO NOT USE PROCESSING WHERE FOOD CEASED. DO NOT EXPOSED.**

### DIRECTION OF FOOD

NON-FOOD areas floor drains (to locker rooms, closets and st

Apply 1/4 to 1/2 around water lockers, tables, hide or through

B  
G



SINCE 1904  
TM

# DURSBAN 2 EC

An Insecticide For Use By Pest Control  
Operators Or Professional Applicators Only.

ACTIVE INGREDIENTS	BY WEIGHT
Chlorpyrifos (O, O-diethyl O-(3, 5, 6-trichloro-2-pyridyl) phosphorothioate) .....	24.9%
Aromatic petroleum derivative solvent .....	53.7%
INERT INGREDIENTS .....	21.4%
TOTAL.....	100.0%

Contains 2 pounds of chlorpyrifos per gallon.

\*DURSBAN® - Trademark of The Dow Chemical Company  
U.S. Patent No. 3,244,586.

EPA Reg. No. 904-240

EPA Est. 904-NJ-1

## WARNING:

**KEEP OUT OF REACH OF CHILDREN.**

SEE SIDE PANEL FOR ADDITIONAL WARNINGS.

B.G. Pratt Division, Gabriel Chemicals Ltd.  
204 21st Avenue, Paterson, N.J. 07509

NET CONTENTS:     GALLONS  
1 5 30 55

## DIRECTIONS FOR HOUSEHOLD AND INDUSTRIAL ROACH CONTROL

Dursban 2 EC mixes readily with water or oil. Dilute required amount of Dursban 2 EC in water or base oil such as #2 fuel oil or deodorized kerosene. Mix according to the following table. Use the lower (0.25%) concentration on light cockroach infestations. Use the higher (0.50%) concentration to quickly reduce heavy cockroach infestations.

AMOUNT SPRAY MIX DESIRED	AMOUNT OF DURSBAN 2EC	
	For 0.25%	For 0.50%
1 gallon	1.2 ounces	2.4 ounces
3 gallons	3.6 ounces	7.2 ounces
5 gallons	6.0 ounces	12.0 ounces
10 gallons	12.0 ounces	24.0 ounces

Use as a spot treatment by applying as a coarse spray or with a paint brush to areas where cockroaches normally are found. These areas include cracks in walls, baseboards, behind refrigerators, stoves, cabinets, beneath sinks and around drainpipes. Apply so as to avoid spray mist from contacting food, foodstuffs, water supplies and utensils. Dishes and food handling equipment should be washed thoroughly should they become contaminated.

NOTE: A period of 4 to 7 days after treatment is normally required for maximum effect on cockroaches. Repeat treatment as needed.

**DO NOT USE IN EDIBLE PRODUCTS AREAS OF FOOD PROCESSING PLANTS, RESTAURANTS OR OTHER AREAS WHERE FOOD IS COMMERCIALY PREPARED OR PROCESSED. DO NOT USE IN SERVING AREAS WHILE FOOD IS EXPOSED.**

## DIRECTIONS FOR USE IN NON-FOOD AREAS OF FOOD HANDLING ESTABLISHMENTS.

**NON-FOOD AREAS:** Includes garbage rooms, lavatories, floor drains (to sewers), entries and vestibules, offices, locker rooms, machine rooms, boiler rooms, garages, mop closets and storage (after canning or bottling).

Apply ¼ to ½% solution to spot-treat baseboard areas, around water pipes, surfaces behind and beneath sinks, lockers, tables, pallets, and similar areas where cockroaches hide or through which they may enter.

Net Wt. 20 Lbs.

Covers 5,000 or 10,000 Sq. Ft.

# LEBANON INSECT and GRUB CONTROL WITH DURSBAN\*

## SPREADER SETTINGS

	2# / 1000	4# / 1000
Show'n tell™ Model 105 .....	7	8
Central .....	7	8
Greenfield .....	7	8
Jackson Sears .....	4½	5
Lawn Beauty .....	5	6
M. I. D. ....	5	6
Scotts .....	5	5½

These settings are approximate. Always check your own spreader with proportionate amount on 100 square foot area first.

## HOW TO USE

5,000 sq. ft. for soil grubs

For Japanese Beetle Larvae, and European Chafer Larvae, apply Lebanon Insect and Grub Control at the rate of 4 lbs per 1000 sq. ft. Immediately after application, water the turf to wash granules into the soil area of infestation.

10,000 sq. ft. for soil surface insects

For sod webworms, cutworms, chinch bugs, ants, mole crickets, brown dog ticks and earwigs, apply Lebanon Insect and Grub Control at the rate of 2 lbs per 1000 sq. ft. Treat when insects first appear. Immediately after application, sprinkle the turf with water to wash granules into the zone of insect infestation. Repeat as necessary.

Use a fertilizer spreader to insure an even application. Follow the suggested spreader settings.

Keep children and pets off treated areas until this material is washed into the soil and grass is dry.

Do not mow for 24 hours following treatment

### CAUTION

Under the

Keep out of reach of children. Harmful if swallowed.

Do not take internally. Avoid eye contact. Flush contaminated eyes with plenty of water, and get medical attention if irritation persists. Wash thoroughly after handling. Wash contaminated clothing before re-use.

Keep away from food, feedstuffs and domestic water supplies.

NOTE TO PHYSICIAN: Active ingredient is a cholinesterase inhibitor. Treat

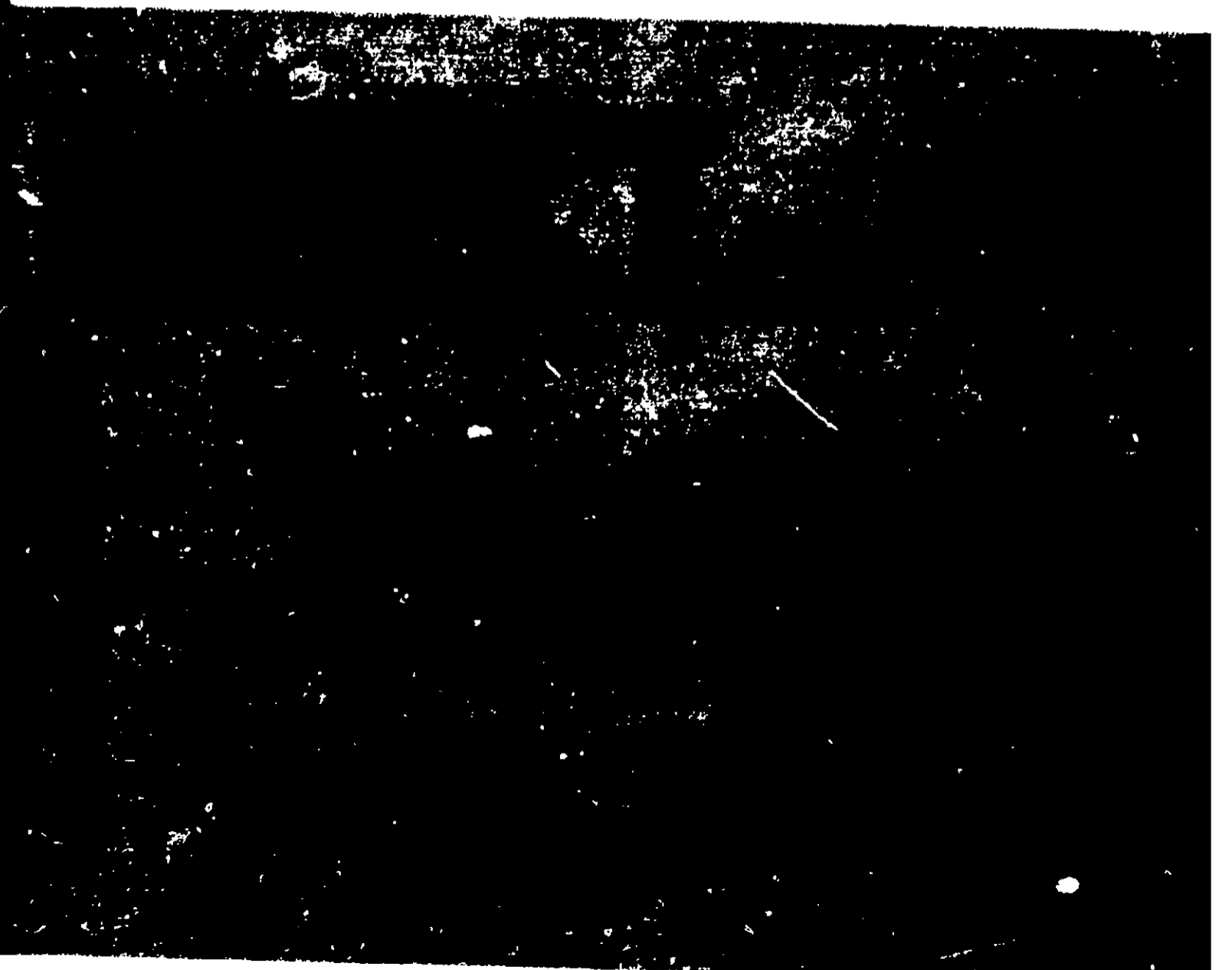
ACCREDITED  
JAN 23 1976

96-3

LEBANON

Covers 5,000 or 10,000 Sq. Ft.

NET W



5,000 SQ. FT. COVERAGE Kills Soil Feeding Insects: Japanese Beetle European Chafer Larvae

5,000 sq. ft. for soil grubs

For Japanese Beetle Larvae, and European Chafer Larvae, apply Lebanon Insect and Grub Control at the rate of 4 lbs. per 1000 sq. ft. Immediately after application, water the turf to wash granules into the soil area of infestation.

10,000 sq. ft. for soil surface insects

For sod webworms, cutworms, chinch bugs, ants, mole crickets, brown dog ticks and earwigs, apply Lebanon Insect and Grub Control at the rate of 2 lbs. per 1000 sq. ft. Treat when insects first appear. Immediately after application, sprinkle the turf with water to wash granules into the zone of insect infestation. Repeat as necessary.

Use a fertilizer spreader to insure an even application. Follow the suggested spreader settings.

Keep children and pets off treated areas until this material is washed into the soil and grass is dry.

Do not mow for 24 hours following treatment.

**CAUTION**

Under the Federal Insecticide, Fungicide, and Rodenticide Act

Keep out of reach of children. Harmful if swallowed.

Do not take internally. Avoid eye contact. Flush contaminated eyes with plenty of water, and get medical attention if irritation persists. Wash thoroughly after handling. Wash contaminated clothing before reuse.

Keep away from food, feedstuffs and domestic water supplies.

NOTE TO PHYSICIAN: Active ingredient is a cholinesterase inhibitor. Treat symptomatically. Atropine is an antidote.

This product is toxic to fish, birds and other wildlife. Keep out of any body of water. Do not contaminate water by cleaning of equipment or disposal of wastes. Apply this product only as specified on this label.

Do not re-use empty container. Dispose of empty container and wastes by burning or by burying. If burned, keep out of smoke and fumes.

**WARRANTY**

Lebanon Chemical Corporation warrants that this product conforms to its chemical description and is reasonably fit for the purpose stated on the label when used in accordance with directions under normal conditions of use, but neither this warranty nor any other warranty of merchantability or fitness for a particular purpose, express or implied, extends to the use of this product contrary to label instructions, or under abnormal conditions, or under conditions not reasonably foreseeable to seller, and buyer assumes the risk of any such use.

ACCEPTED  
JAN 23 1976  
961-3

5,000 SQ. FT. COVERAGE Kills Soil Feeding Insects  
European Chafer Larvae  
10,000 SQ. FT. COVERAGE Kills Soil Surface Insects  
Chinch Bugs, Ants, Mole Crickets

**CAUTION: KEEP OUT OF REACH OF CHILDREN**

INSECTICIDE INGREDIENT  
ACTIVE INGREDIENT:  
Chlorpyrifos [0,0-diethyl 0-(3-trichloro-2-pyridyl)phosphorothioate]  
INERT INGREDIENTS  
EPA REG. NO. 961-326

\*U. S. Patent No. 3,482,882

LEBANON CHEMICAL CORPORATION  
LEBANON, OHIO