

[900-76]



This formulation is especially designed for use in electric mist spray equipment and steam vaporizers in cafes, restaurants, food storage, warehouses, flour mills, packing plants and the like.

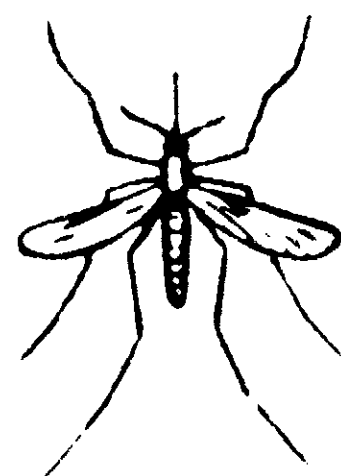
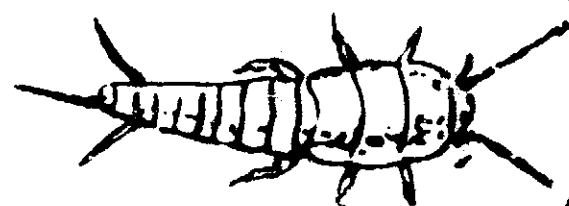
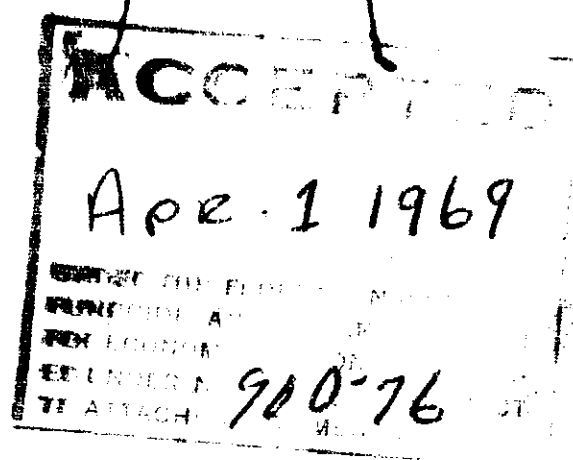
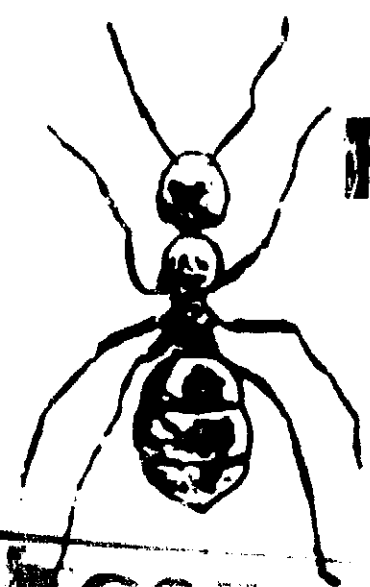
DIRECTIONS

For use in steam vaporizer — Roaches, Water Bugs, Ants, Silverfish, Spiders, Weevils, use 2-4 oz. per 1000 cu. ft.

For Flies, Mosquitoes, Gnats, Wasps, and Adult Moths, use 1 to 2 oz. per 1000 cu. ft.

Where possible spray directly on infested areas. Place steam vaporizer in center of room and operate until thoroughly fogged with vapor will then penetrate cracks and crevices which are the breeding places of many insects.

For electric mist spray equipment: For control of Flies, Mosquitoes, Gnats, Wasps, and Adult Moths: Close all windows and stop all ventilation. Set machine to deliver mist in as fine a particle size as possible; use 1 to 2 oz. per 1000 cu. ft. Keep area closed for 20 minutes minimum after application. Sweep up and destroy fallen insects. Repeat as necessary.

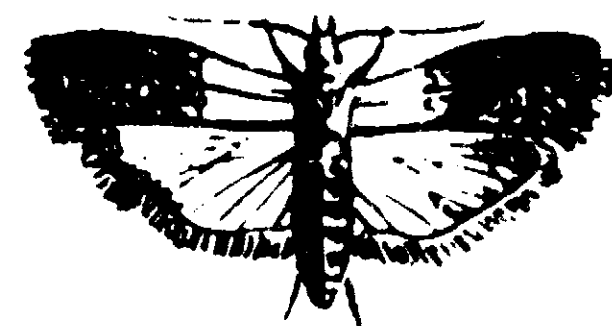
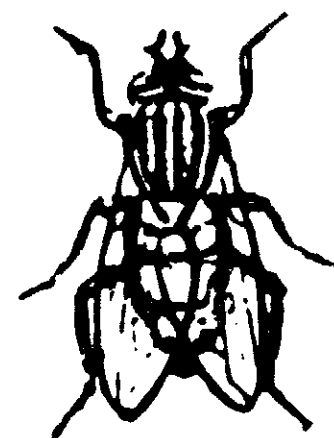


PYRETHRIN TYPE

CS 102

VAPORIZER

Insect Spray



DIRECTIONS (continued)

Beetles; set machine to deliver a coarse spray. The spray should be directed at baseboards, and into cracks and crevices, behind switches, around motor mounts, sinks, door and window casings, partitions, around conduits and behind conduit boxes. Apply spray so as to penetrate areas. Apply enough to point of run off. For ants, be sure that door and window casings are thoroughly sprayed. Spray nests and ant trailways near building.

For control of bedbugs, spray bedstead, mattress, corners and all cracks and crevices in the room. Use coarse spray. Repeat as necessary.

For control of fleas, vaporize into infested areas with coarse spray. Allow to dry before returning animals to quarters.

Can also be used as a highly concentrated spray with ordinary spraying equipment.

Caution: Inflammable mixture. Do not use near fire or open flame. Store in cool place; keep container tightly closed.

Keep out of reach of children. Harmful if swallowed. If swallowed

U.S.D.A. Reg. No. 900-76

ACTIVE INGREDIENTS

100%

- Consisting of
- Petroleum Distillates
- n-octyl Bicycloheptene Dicarboximide
- Technical Piperonyl Butoxide Pyrethrins
- Consists of 80% (butyl carbityl) (6-propyl piperonyl) ether and 20% related compounds
- U.S. Patent No. 2,476,512

Keep Out of Reach of Children

Caution: Harmful if swallowed. If swallowed do not induce vomiting. Call physician. Do not use around food. Cover or remove all exposed food or food utensils to avoid contamination with spray. Combustible mixture. Do not use near open flame.