

USE DIRECTIONS:

DISINFECTION

For heavy duty cleaning and disinfecting and fungicidal activity against pathogenic fungi, use 4.5 ounces per gallon.

For best results, use LCS-200 with a cloth or mop and apply to walls, floors, table tops, and counters.

SANITIZATION

For light duty cleaning, sanitizing and deodorizing, use 2 ounces per gallon. If used for sanitization of previously cleaned food contact items, limit the level to 200 ppm of quaternaries, (8 ounces per 5 gallons of water).

Potable water rinse is required.

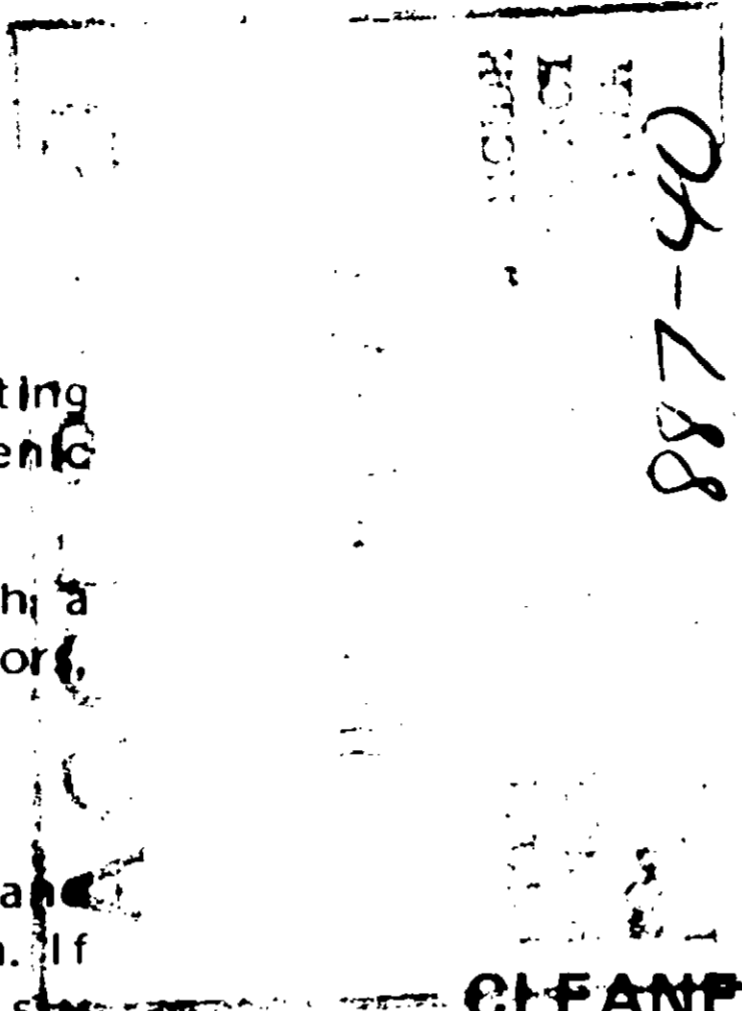
For extra heavy industrial cleaning and sanitizing, use a second application.

Do not mix with soap or anionic solutions.

This product is non-corrosive in use dilutions on inanimate hard surfaces.

PHENOL COEFFICIENTS:

Guaranteed	Minimum
S. aureus	14
S. typhosa	9



LCS-200

CLEANER DEODORIZER DISINFECTANT FUNGICIDE

ACTIVE INGREDIENTS:

n-Alkyl (60%C14, 30%C16, 5%C12, 5%C18) dimethyl benzyl ammonium chlorides	0.8%
n-Alkyl (68%C12, 32%C14) dimethyl ethylbenzyl ammonium chlorides	0.8%
Sodium Metasilicate	2.4%
Tetrasodium ethylenediamine tetraacetate	1.0%
INERT INGREDIENTS	95.0%

NET CONTENTS: ONE U.S. GALLON 100.0%

DANGER Keep Out of Reach of Children. See right side panel for additional precautionary and first aid statements.

ACCEPTED
887-40

LCS-200

CLEANER DEODORIZER DISINFECTANT FUNGICIDE

ACTIVE INGREDIENTS:

n-Alkyl (60%C14, 30%C16, 5%C12, 5%C18)	
dimethyl benzyl ammonium chlorides	0.8%
n-Alkyl (68%C12, 32%C14) dimethyl	
ethylbenzyl ammonium chlorides	0.8%
Sodium Metasilicate	2.4%
Tetrasodium ethylenediamine tetraacetate	1.0%
INERT INGREDIENTS	95.0%
NET CONTENTS: ONE U.S. GALLON	100.0%

DANGER Keep Out of Reach of Children. See right side panel for additional precautionary and first aid statements.

24 June 1975

LCS-200 is a heavy duty cleaner and disinfectant designed for general purpose use where heavy duty cleaning and sanitizing is of prime importance. When used as directed, LCS-200 will remove most household dirt and grime in a single, simple application. When used for industrial cleaning, follow the use directions shown on the left side panel. For use on walls, floors, table tops, in industrial plants, offices, motels, schools, and homes.

Not recommended for Pseudomonas aeruginosa.

DANGER

Keep Out of Reach of Children. Corrosive. Causes severe eye and skin damage. Do not get in eyes, on skin or on clothing. Protect eyes and skin when handling concentrate. Harmful if swallowed. Avoid contamination of food.

FIRST AID

In case of contact, immediately flush eyes or skin with plenty of water for at least 15 minutes. For eyes, call a physician. Remove and wash all contaminated clothing before reuse. If swallowed, drink milk, egg whites, gelatin solution, or if these are not available, drink large quantities of water. Call a physician.

NOTE TO PHYSICIAN

Probable mucosal damage may contraindicate the use of gastric lavage. Measures against circulatory shock, respiratory depression and convulsion may be needed.

Rinse empty container thoroughly with water and discard.

EPA Reg. No. 887-40