

TECHNICAL Chlordane

ACCEPTED
JUN 29 1984
LPA Reg. No. 876 273

FOR MANUFACTURING PURPOSES ONLY

USE ONLY IN THE FORMULATION
OF PROFESSIONAL TERMITE
CONTROL PRODUCTS

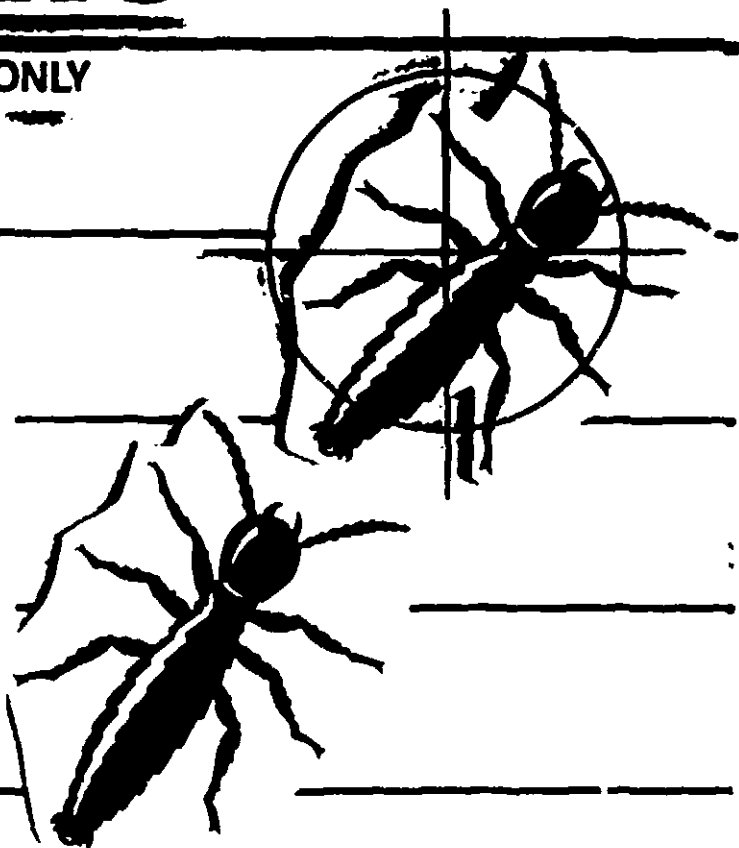
ACTIVE INGREDIENT:
Chlordane* 100.0%
*Equivalent to 60% Octachloro-4,7-methanotetrahydrodane and 40% related compounds

**KEEP OUT OF THE REACH OF CHILDREN
WARNING**

STATEMENT OF PRACTICAL TREATMENT

If swallowed - Do not induce vomiting. Give water and induce vomiting if possible. If vomiting does not occur, give water and induce vomiting. Do not give anything by mouth to an unconscious person. Get medical attention immediately.
If inhaled - Remove victim to fresh air and apply respiratory aid if indicated.
If on skin - Wash promptly with a gentle soap and water. Rinse thoroughly.
If in eyes - Rinse eyes for at least 15 minutes with water and call a physician immediately.

SEE LEFT PANEL FOR ADDITIONAL PRECAUTIONARY STATEMENTS



E.P.A. Reg. No. 876-273-AA
E.P.A. Est. No. 876-IL-1

NET WEIGHT:
410 POUNDS (30 GALLONS)



BEST DOCUMENT AVAILABLE

2

**PRECAUTIONARY STATEMENTS
HAZARDS TO HUMANS AND DOMESTIC ANIMALS
WARNING**

May be fatal if swallowed. Do not breathe vapor, fumes, dust, or spray mist. Do not get on skin. Do not contaminate feed or foodstuffs.

Wash thoroughly with soap and water after handling and before eating or smoking. Clean clothing should be used daily. Wear clean synthetic rubber gloves and a pesticide respirator jointly approved by the Mining Enforcement and Safety Administration (formerly the U. S. Bureau of Mines) and by the National Institute for Occupational Safety and Health under the provisions of 30 CFR Part 11.

A committee of the National Academy of Sciences has stated that

"There are no adequate data to show that these compounds are carcinogenic in humans, but because of their carcinogenicity in certain mouse strains and the extensive similarity of the carcinogenic action of chemicals in animals and in humans, the committee concluded that chlordane, heptachlor, and/or their metabolites may be carcinogenic in humans."

ENVIRONMENTAL HAZARDS

This product is toxic to fish and wildlife. Do not discharge into lakes, streams, ponds or public waters unless in accordance with a National Pollution Discharge Elimination System Permit. For guidance contact your regional office of the Environmental Protection Agency.

DIRECTIONS FOR USE

It is a violation of Federal law to use this product in a manner inconsistent with its labeling.

This product may not be used in the formulation of a product packaged in containers less than 1/2 gallon in size.

This product may not be used in the formulation of a product containing less than 4 lbs. technical chlordane per gallon.

The user is solely responsible for determination of suitability of the use of this product for any specific purpose, any manufacturing practice employed and adoption of such safety precautions as may be necessary.

STORAGE AND DISPOSAL

Prohibitions:

Do not contaminate water, food, or feed by storage or disposal.

STORAGE:

Store in original container in a well ventilated area separately from fertilizer, feed and foodstuffs. Avoid cross-contamination with other pesticides. Spillage or leakage should be contained and absorbed with clay granules, saw dust or equivalent material and disposed of as excess pesticide. Wash area of spill with detergent and water.

Pesticide Disposal:

Pesticide wastes are toxic. Improper disposal of excess pesticide, spray mixture, or rinseate is a violation of Federal Law. If these wastes cannot be disposed of by use according to label instructions, contact your State Pesticide or Environmental Control Agency, or the Hazardous Waste representative at the nearest EPA Regional Office for guidance.

Container Disposal:

Triple rinse (or equivalent). Then offer for recycling or reconditioning, or puncture and dispose of in a sanitary landfill, or by other procedures approved by state and local authorities.

BEST DOCUMENT AVAILABLE

LIMITED WARRANTY AND LIABILITY

NOTICE: Read the Limited Warranty and Liability before buying or using this product. If the terms are not acceptable, return it at once unopened.

It is critical that this product be used and mixed only as specified on the label. The laws of a State may make some or all of this paragraph inapplicable or may give you rights in addition to your rights hereunder. Except to the extent prohibited by applicable law, the exclusive remedy of the user or buyer and the limit of liability of this Company or any other Seller for any and all losses, personal injuries or damages resulting from the use of this product shall be the purchase price paid by the user or buyer for the quantity of product involved. Except to the extent prohibited by State law, there is no warranty and the Company and other Sellers decline all liability for losses, personal injury or damages (i) arising from any use of this product in a manner or for a purpose not recommended in its label directions, or from mixing this product before use with any substance except as recommended by the product's label; (ii) arising from handling or storage in violation of label instructions; (iii) for all indirect, special or consequential damages; (iv) when not reported to this Company within one year of discovery; and (v) arising from product not used within the label-designated shelf life or four years from date of purchase, whichever first occurs. THERE ARE NO IMPLIED WARRANTIES AND NO WARRANTIES OF MERCHANTABILITY OR FITNESS.

VELSICOL
CHEMICAL CORPORATION
341 E. OHIO ST., CHICAGO, IL 60611

BEST DOCUMENT AVAILABLE