

V...

Contains 4 lbs. 2.5...

AGRICULTURAL...

Comment

CAUTION

Harmful if swallowed. Avoid inhaling spray mist. This product may cause skin irritation. Avoid contact with skin, eyes and clothing. In case of contact with skin flush with plenty of water; for eyes flush with plenty of water for at least 15 minutes and get medical attention. Keep out of reach of children.

Do not apply (except as recommended) on or near desirable plants or in locations where the chemical may be washed or moved into contact with their roots. Excessive amounts of this product in the soil may temporarily inhibit seed germination and all plant growth. Vapors from this product may injure susceptible plants in the immediate vicinity.

Prevent drift of product to desirable plants, particularly beans, clover, cotton, flowers, fruit trees, grapes, ornamentals, peas, potatoes, soybeans, sunflowers, tomatoes and other broadleaf crops during both the growing and dormant periods. Use coarse sprays which are less likely to drift.

Do not apply by airplane when sensitive crops are nearby. Consult your State or Local Authorities for possible aerial application or other application restrictions.

Do not use around the home, recreation sites or similar areas.

Do not contaminate irrigation ditches or water used for domestic purposes.

Do not contaminate water by cleaning of equipment or disposal of wastes.

Apply this product only as specified on this label.

To avoid injury to desirable plants, equipment used for Vegatrol O-4T Herbicide should be thoroughly cleaned before reuse to handle or apply other agricultural chemicals.

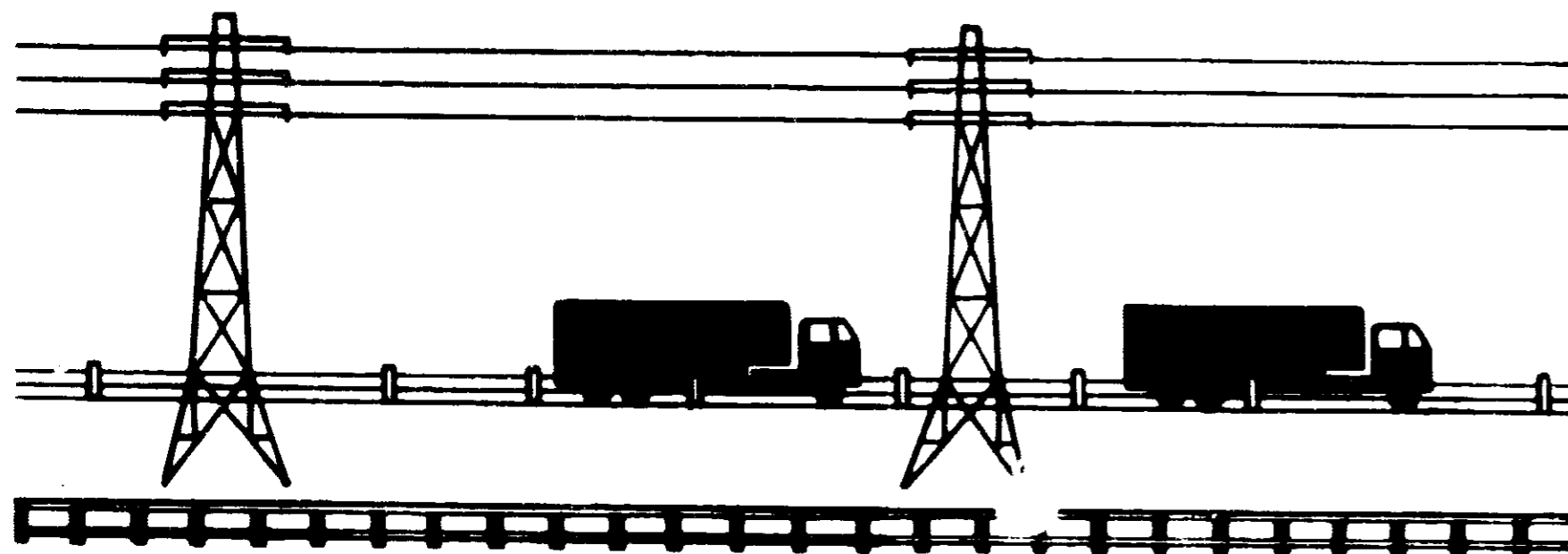
Do not store near fertilizers, seeds, insecticides or fungicides. Do not contaminate feed or foodstuffs. Do not mix with liquid fertilizers.

If stored below freezing, it may be necessary to warm to 40°F. and agitate before using. This does not affect the efficiency of this product.

CONTAINER DISPOSAL

Do not reuse empty container. Empty containers should be rinsed with water at least three times before disposal and rinse water should be added to the spray tank. Discard container in a safe place. Do not burn.

NOTICE—Because Velsicol Chemical Corporation has no control over storage, handling and conditions of use, which are of critical importance, Velsicol Chemical Corporation makes no representation or warranty, either express or implied, for results or residues greater than any tolerance which may be established by appropriate governmental agencies, due to misuse, improper handling or storage of this material. Nor does Velsicol Chemical Corporation assume any responsibility for injury to persons, crops, animals, soil or property arising out of misuse, improper handling or storage of this material.



14131 460AB

VELSICOL Vegatrol O-4T

HERBICIDE FOR BRUSH CONTROL

Contains 4 lbs. 2,4,5-T Acid Equivalent Per Gallon

ACTIVE INGREDIENT:

Isooctyl Ester of 2,4,5 Trichlorophenoxy
acetic acid 65.6%

INERT INGREDIENTS:

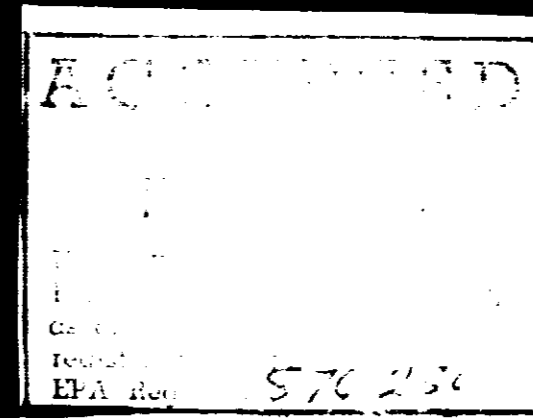
34.4%

TOTAL 100.0%

Equivalent to 4 lbs. 2,4,5-Trichlorophenoxyacetic Acid

EPA Reg. No. 576-230 AA

NET CONTENTS



CAUTION

KEEP OUT OF REACH OF CHILDREN

See Left Panel for Additional Cautions

VELSICOL CHEMICAL CORP.

341 E. OHIO STREET, CHICAGO, ILLINOIS 60611

Vegatrol O-4T will kill or control to 2,4,5-T.

| | |
|---------------|-----|
| Ash | Cur |
| Aspen | Do |
| Birch | El |
| Blackjack oak | Elr |
| Buckbrush | Ha |
| Bur oak | Ha |
| Choke cherry | Hi |
| Cottonwood | Ir |
| | La |

Vegatrol O-4T IS NOT EMULSIFIABLE. Shake or roll container before use.

Vegatrol O-4T can be mixed with water for adequate coverage of the plants that are well leaved.

Do not graze dairy animals on treated areas.

Do not graze meat animals on treated areas.

| Area or Type of Treatment |
|---|
| Dormant Cane Treatment For use on rights-of-way (utility, highway, pipeline, railroad), fencerows, wasteland and similar noncropland. |
| Frill Treatment For use on rights-of-way (utility, highway, pipeline, railroad), fencerows, wasteland and similar noncropland. |
| Stump Treatment For use on rights-of-way (utility, highway, pipeline, railroad), fencerows, wasteland and similar noncropland. |
| Pine Release and Noncrop Areas For use on rights-of-way (utility, highway, pipeline, railroad), fencerows, wasteland and similar noncropland. |
| Pastures and Rangelands |
| Tree Injection |

VELSICOL

Vegatrol 0-4T

HERBICIDE FOR BRUSH CONTROL

Contains 4 lbs. 2,4,5-T Acid Equivalent Per Gallon

ACTIVE INGREDIENT:

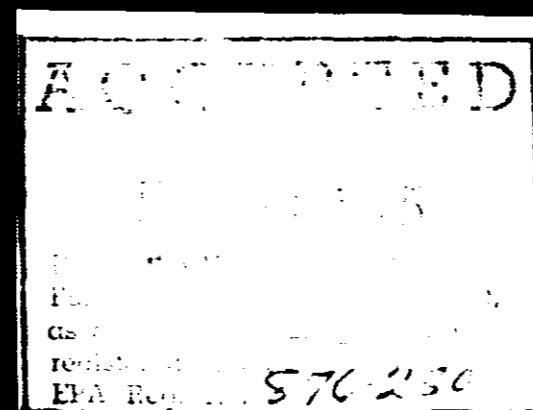
Isocetyl Ester of 2,4,5-Trichlorophenoxyacetic acid 65.6%

INERT INGREDIENTS 34.4%

TOTAL 100.0%

Equivalent to 45.6 lbs. 2,4,5-Trichlorophenoxyacetic Acid

NET CONTENTS:



CAUTION

KEEP OUT OF REACH OF CHILDREN

See Left Panel for Additional Cautions

VELSICOL CHEMICAL CORP.

341 E. OHIO STREET, CHICAGO, ILLINOIS 60611

Vegatrol 0-4T will kill or control the following as well as many other noxious plants susceptible to 2,4,5-T.

| | | | |
|---------------|-----------|--------------|-----------------|
| Ash | Cumquat | Locust | Poplar |
| Aspen | Dogwood | Maple | Post oak |
| Birch | Elm | Mesquite | Prickly pear |
| Black oak | Elm | Osage orange | Red oak |
| Blackjack oak | Hackberry | Pecan | Scrub oak |
| Buckbrush | Hawhorn | Persimmon | Sumac |
| Bur oak | Hickory | Pin oak | Sweet gum |
| Choke cherry | Ironwood | Poison ivy | Wild blackberry |
| Cottonwood | Lakewood | Poison oak | |

DIRECTIONS FOR USE

Vegatrol 0-4T IS NOT EMULSIFIABLE. **DO NOT DILUTE WITH WATER.** To ensure uniform results, shake or roll container prior to opening and agitate spraymix thoroughly.

Vegatrol 0-4T can be mixed with diesel oil, Number 1 or Number 2 fuel oil or kerosene for adequate coverage of the target species. Best results are obtained when applied to plants that are well leafed and actively growing.

Do not graze dairy animals on treated areas within 6 weeks after application.

Do not graze meat animals on treated areas within 2 weeks of slaughter.

| Area or Type of Treatment | Rate of Vegatrol 0-4T | Application Directions and Limitations |
|---|--|--|
| Dormant Cane Treatment For use on rights-of-way (utility, highway, pipeline, railroad), fencerows, wasteland and similar noncropland. | Dilute 1½ gallons (6 lbs. 2,4,5-T acid equivalent) with 100 gallons of oil. | Spray any time after brush is dormant. Concentrate spray at base of stems, then spray the upper parts of the stems thoroughly. Dense brush 6 to 8 feet tall will require 150 gallons of this mixture per acre. |
| Frill Treatment For use on rights-of-way (utility, highway, pipeline, railroad), fencerows, wasteland and similar noncropland. | Dilute 3 gallons (12 lbs. 2,4,5-T acid equivalent) with 97 gallons of oil (equivalent to 1 pint in 4 gallons). | Application may be made during any season. For control of plants having trunks more than 6 inches in diameter, make overlapping cuts in the bark around the trunk as close to the ground as is possible. Treat fresh cuts with the diluted mixture. |
| Stump Treatment For use on rights-of-way (utility, highway, pipeline, railroad), fencerows, wasteland and similar noncropland. | Dilute 3 gallons (12 lbs. 2,4,5-T acid equivalent) with 97 gallons of oil (equivalent to 1 pint in 4 gallons). | Apply to freshly cut stumps of large trees or woody plants. Make application with a knapsack sprayer having a nozzle of medium orifice or by brush or swab. For best results, both sides and top of stump should be thoroughly wet. Application can be made any time of the year except when snow or water prevents application at the soil line. Repeat application if regrowth occurs. |
| Pine Release and Noncrop Areas For use on rights-of-way (utility, highway, pipeline, railroad), fencerows, wasteland and similar noncropland. | 4 pints (2 lbs. 2,4,5-T acid equivalent) per acre. | For ground application use 20 to 100 gals. of diluent/acre. For aerial application use 5 to 20 gals. of diluent/acre. Where both over and understory hardwoods are present, a second application may be necessary. |
| Pastures and Rangelands | 1½ pints (¾ lb. 2,4,5-T acid equivalent) per acre. | For ground application use 20 to 100 gallons of diluent per acre. For aerial application use 5 to 20 gallons of diluent per acre. Do not apply to newly seeded areas. Observe grazing restriction given above. |
| Tree Injection | Dilute 1 gallon (4 lbs. 2,4,5-T acid equivalent) with 10 gallons of oil. (Experienced applicators may obtain good results with 1 to 19 mixture.) | Make injections as near to the ground as is practical, using one injection per inch of trunk diameter. Resistant species such as Hickory and Black Oak should be completely frilled. The injector should be pushed toward the tree when the frill is cut. Frills should be filled to overflowing with the chemical. Tree injections are effective any time of the year. |

ACCEPTED WITH COMMENTS