

Comme

**CAUTION**

Harmful if swallowed. Avoid inhaling spray mist. This product may cause skin irritation. Avoid contact with skin, eyes and clothing. In case of contact with skin flush with plenty of water; for eyes flush with plenty of water for at least 15 minutes and get medical attention. Keep out of reach of children.

Do not apply (except as recommended) on or near desirable plants or in locations where the chemical may be washed or moved into contact with their roots. Excessive amounts of this product in the soil may temporarily inhibit seed germination and all plant growth. Vapors from this product may injure susceptible plants in the immediate vicinity.

Prevent drift of product to desirable plants, particularly beans, clover, cotton, flowers, fruit trees, grapes, ornamentals, peas, potatoes, soybeans, sunflowers, tomatoes and other broadleaf crops during both the growing and dormant periods. Use coarse sprays which are less likely to drift.

Do not apply by airplane when sensitive crops are nearby. Consult your State or Local Authorities for possible aerial application or other application restrictions.

Do not use around the home, recreation sites or similar areas.

Do not contaminate irrigation ditches or water used for domestic purposes.

This product is toxic to fish. Keep out of lakes, streams, or ponds. Do not apply when weather conditions favor drift from areas treated. Do not contaminate water by cleaning of equipment or disposal of wastes.

Apply this product only as specified on this label.

To avoid injury to desirable plants, equipment used for Vegatrol O-6T Herbicide should be thoroughly cleaned before reuse to handle or apply other agricultural chemicals.

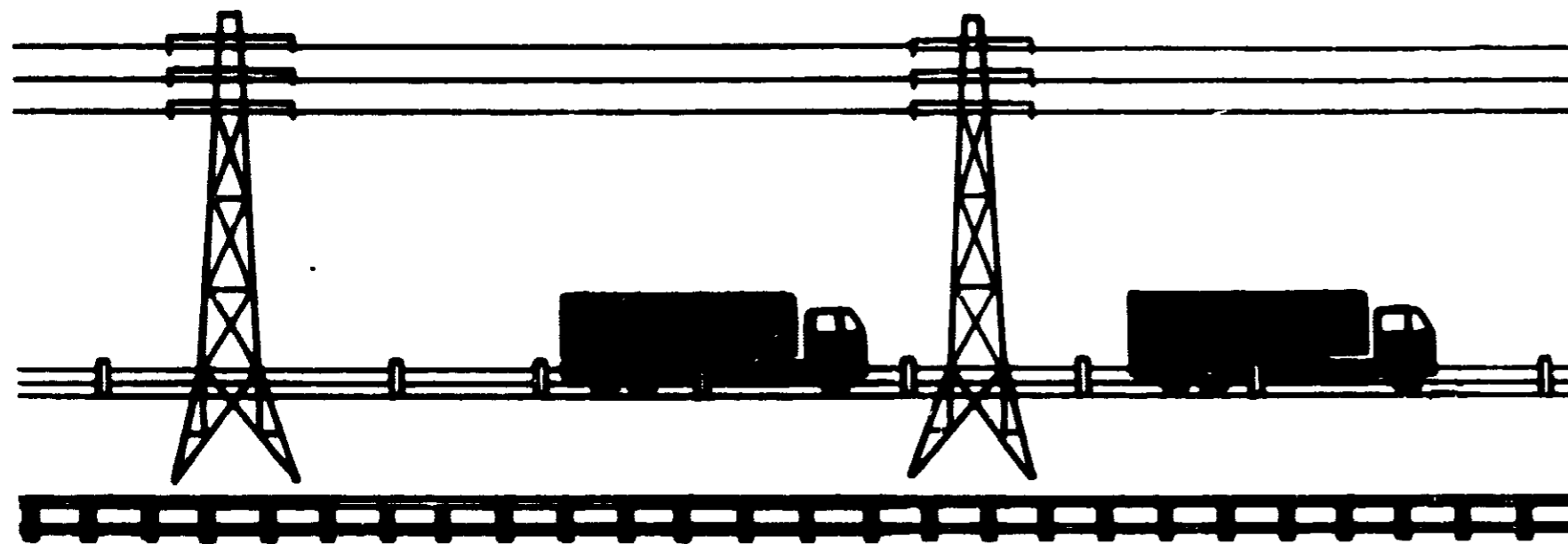
Do not store near fertilizers, seeds, insecticides or fungicides. Do not contaminate feed or foodstuffs. Do not mix with liquid fertilizers.

If stored below freezing, it may be necessary to warm to 40°F. and agitate before using. This does not affect the efficiency of this product.

**CONTAINER DISPOSAL**

Do not reuse empty container. Empty containers should be rinsed with water at least three times before disposal and rinse water should be added to the spray tank. Discard container in a safe place. Do not burn.

**NOTICE**—Because Velsicol Chemical Corporation has no control over storage, handling and conditions of use, which are of critical importance, Velsicol Chemical Corporation makes no representation or warranty, either express or implied, for results or residues greater than any tolerance which may be established by appropriate governmental agencies, due to misuse, improper handling or storage of this material. Nor does Velsicol Chemical Corporation assume any responsibility for injury to persons, crops, animals, soil or property arising out of misuse, improper handling or storage of this material.



14132-460AB

# VELSICOL

## Vegatrol O-6T

### HERBICIDE FOR BRUSH CONTROL

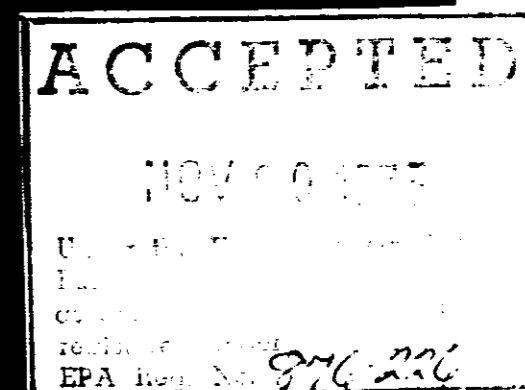
Contains 6 lbs. 2,4,5-T Acid Equivalent Per Gallon

**ACTIVE INGREDIENT**

Isocetyl Ester of 2,4,5-Trichlorophenoxyacetic acid 88.8%

**INERT INGREDIENTS**

TOTAL 100.0%



## CAUTION

**KEEP OUT OF REACH OF CHILDREN**

See Leaflet Panel for Additional Cautions

**VELSICOL CHEMICAL CORP.**

341 E. OHIO STREET, CHICAGO, ILLINOIS 60611

Vegatrol O-6T will kill or control susceptible species of 2,4,5-T.

- Ash
- Aspen
- Birch
- Black oak
- Black locust
- Buckhorn
- Bur oak
- Chokeberry
- Cottonwood
- Cucumber tree
- Do
- Elder
- Elm
- Hickory
- Hickory
- Hickory
- Ironwood
- Lamb

Vegatrol O-6T IS NOT EMULSIFIABLE

Vegatrol O-6T Herbicide can be diluted with kerosene. To ensure uniform coverage, spraymix thoroughly.

Best results are obtained when applied to dry brush.

Do not graze dairy animals on treated areas.

Do not graze meat animals on treated areas.

Area or Type of Treatment
<b>Dormant Cane Treatment</b> For use on rights-of-way (utility, highway, pipeline, railroad), fencerows, wasteland and similar noncropland.
<b>Right-of-Way Treatment</b> For use on rights-of-way (utility, highway, pipeline, railroad), fencerows, wasteland and similar noncropland.
<b>Stump Treatment</b> For use on rights-of-way (utility, highway, pipeline, railroad), fencerows, wasteland and similar noncropland.
<b>Pine Release and Noncrop Areas</b> For use on rights-of-way (utility, highway, pipeline, railroad), fencerows, wasteland and similar noncropland.
<b>Pastures and Rangelands</b>
<b>Tree Injection</b> For use on rights-of-way (utility, highway, pipeline, railroad), fencerows, wasteland and similar noncropland.