

VI
V

Vegetable

HERBICIDE

Contains 6 lbs. of 2,4-D Acid Equivalent Per Gallon

ACTIVE INGREDIENTS:

Dimethylamine Salt of 2,4-Dichlorophenoxy
acetic Acid*

40.1%

INERT INGREDIENTS:

59.9%

TOTAL

100.0%

*Equivalent to 87.8% 2,4-Dichlorophenoxyacetic Acid

EPA Reg. No. 101-101-01

NET CONTENTS

CAUTION

Harmful if swallowed. Avoid inhaling spray mist. This product may cause skin irritation. Avoid contact with skin, eyes and clothing. In case of contact with skin flush with plenty of water; for eyes flush with plenty of water for at least 15 minutes and get medical attention. Keep out of reach of children.

Do not apply (except as recommended) on or near desirable plants or in locations where the chemical may be washed or moved into contact with their roots. Excessive amounts of this product in the soil may temporarily inhibit seed germination and all plant growth.

Prevent drift of product to desirable plants, particularly beans, clover, cotton, flowers, fruit trees, grapes, ornamentals, peas, potatoes, soybeans, sunflowers, tomatoes and other broadleaf crops during both the growing and dormant periods. Use coarse sprays which are less likely to drift.

Do not apply by airplane when sensitive crops are nearby. Consult your State or Local Authorities for possible aerial application or other application restrictions.

Do not contaminate irrigation ditches or water used for domestic purposes.

To avoid injury to desirable plants, equipment used for Vegatrol 6D Herbicide should be thoroughly cleaned before reuse to handle or apply other agricultural chemicals.

Do not store near fertilizers, seeds, insecticides or fungicides. Do not contaminate feed or foodstuffs. Do not mix with liquid fertilizers.

Do not contaminate water by cleaning of equipment or disposal of wastes.

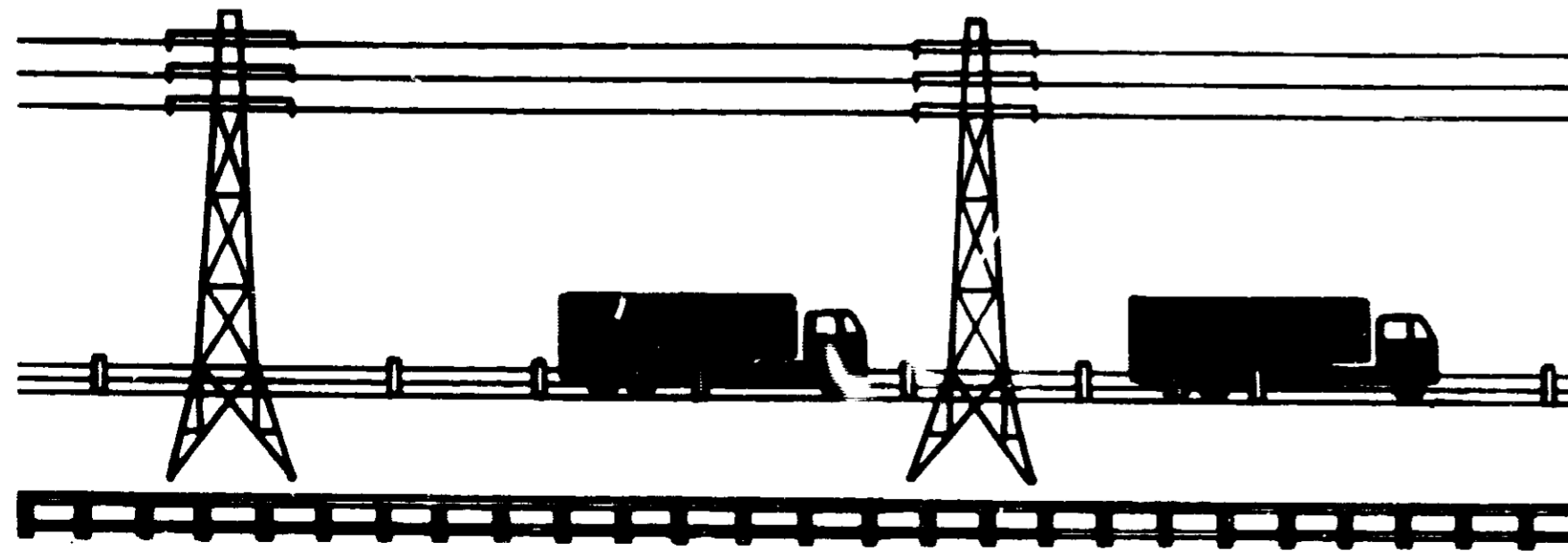
Apply this product only as specified on this label.

If stored below freezing, it may be necessary to warm to 40°F. and agitate before using. This does not affect the efficiency of this product.

CONTAINER DISPOSAL

Do not reuse empty container. Empty containers should be rinsed with water at least three times before disposal and rinse water should be added to the spray tank. Discard container in a safe place. Do not burn.

NOTICE—Because Velsicol Chemical Corporation has no control over storage, handling and conditions of use, which are of critical importance, Velsicol Chemical Corporation makes no representation or warranty, either express or implied, for results or residues greater than any tolerance which may be established by appropriate governmental agencies, due to misuse, improper handling or storage of this material. Nor does Velsicol Chemical Corporation assume any responsibility for injury to persons, crops, animals, soil or property arising out of misuse, improper handling or storage of this material.



14121-460AB

VELSICOL

Vegatrol 6D

HERBICIDE

Contains 6 lbs. of 2,4-D Acid Equivalent Per Gallon

ACTIVE INGREDIENT

Dimethylamine Salt of 2,4-Dichlorophenoxyacetic Acid 69.1%

INERT INGREDIENTS

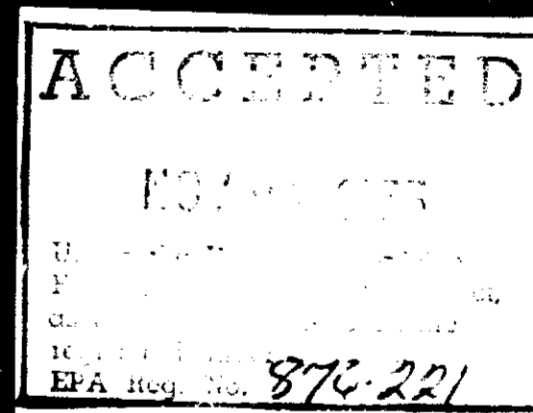
30.9%

TOTAL 100.0%

Equivalent to 5.74 lbs. of 2,4-Dichlorophenoxyacetic Acid

EPA Reg. No. 876-221AA

NET CONTENTS



CAUTION

KEEP OUT OF REACH OF CHILDREN

See Left Panel for Additional Cautions

VELSICOL CHEMICAL CORP.

341 E. OHIO STREET CHICAGO, ILLINOIS 60611

Vegatro 6D Herbicide will plants susceptible to 2,4-D

Arrowweed	Canada
Artichoke	Catnip
Bindweed (hedge, field, & European)	Chickweed
Bitter-sweet	Chicory
Boxelder	Cockle
Buckhorn	Coffee
Bull thistle	Creeping
Burdock	Curly
Burweed	Elderberry
Buttercup	Golden
	Ground
	Hemp
	Hoary

Mix the recommended coverage. DO NOT MIX TH is done while the weeds are weeds may require a repe

Use
Rights-of-way (utility, highway pipeline, railroad), fence-row, wetland and similar non-cropland.
Lakes, ponds, drainage ditch (aquatic weeds).
Pastures; ornamental turf.
Fall-seeded wheat, oats and barley
Spring-seeded wheat, oats and barley
Corn Sorghum
Rice

Comments

VELSICOL

Vegatrol 6D

HERBICIDE

Contains 6 lbs. of 2,4-D Acid Equivalent

ACTIVE INGREDIENT

Dimethylamine Salt of 2,4-Dichlorophenoxyacetic Acid

INERT INGREDIENTS

Trioxymethylene, 2,4-Dichlorophenoxyacetic Acid

NET CONTENTS

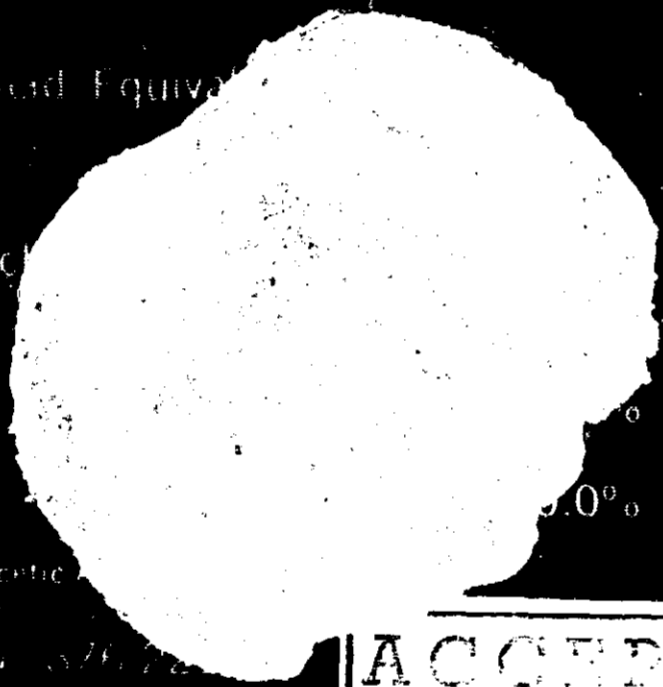
CAUTION

KEEP OUT OF REACH OF CHILDREN

See Left Panel for Additional Cautions

VELSICOL CHEMICAL CORP.

341 E. OHIO STREET CHICAGO, ILLINOIS 60611



ACCEPTED

NOV 20 1975

U.S. DEPARTMENT OF AGRICULTURE
EPA REG. NO. 876-221

Comments

Vegatrol 6D Herbicide will kill or control the following in addition to many other noxious plants susceptible to 2,4-D.

Arrowweed	Canada thistle	Honeysuckle	Plantain	Sumac
Artichoke	Catnip	Indigo	Poison ivy	Sunflower
Bindweed (hedge, field, & European)	Chickweed	Ironweed	Pokeweed	Virginia creeper
Bitter wintercress	Chicory	Jimsonweed	Povertyweed	Waterhyacinth
Boxelder	Cocklebur	Lambsquarters	Puncturevine	Waterhily
Buckhorn	Coffeebean	Locoweed	Purslane	Waterprimrose
Bull thistle	Creeping Jenny	Mexicanweed	Rush	Wild garlic
Burdock	Curly indigo	Morningglory	Russian thistle	Wild lettuce
Burrhead	Elderberry	Mustard	Sagebrush	Wild onion
Burrheadweed	Goldenrod	Nutgrass	Shepherdspurse	Wild radish
Buttercup	Ground ivy	Parrotfeather	Smartweed	Willow
	Hernip	Pennywort	Southistle	Witchweed
	Hoary cress	Pigweed		

DIRECTIONS FOR USE

Mix the recommended amount of Vegatrol 6D with sufficient water to obtain good spray coverage. DO NOT MIX THIS PRODUCT WITH OIL. Best results are obtained when spraying is done while the weeds are young and actively growing. Perennial and other hard-to-control weeds may require a repeat application to give adequate control.

Use	Rate of Vegatrol 6D Per Acre	Application Directions and Limitations
Rights-of-way (utility, highway, pipeline, railroad), fencerows, wasteland and similar non-cropland.	$\frac{2}{3}$ to $1\frac{1}{2}$ quarts (1 to 2 lbs. 2,4-D acid equivalent) in 25-100 gallons of water for ground application or 12.36 gallons of water for aerial application.	Do not graze dairy animals on treated areas within seven days after application.
Lakes, ponds, drainage ditches (aquatic weeds).	$1\frac{1}{4}$ to 3 pints ($1\frac{1}{4}$ to $2\frac{1}{4}$ lbs. 2,4-D acid equivalent) in 50 to 100 gallons of water.	NOTE: Herbicide treatment of public waters requires a permit from the appropriate agencies in most states. Contact your State Conservation Department or Game and Fish Commission for aid in securing a permit if one is required in your state. Wet foliage thoroughly. Make application when leaves are fully developed above the waterline and plants are actively growing. Do not apply to more than $\frac{1}{3}$ to $\frac{1}{2}$ of a lake or pond in any one month, because excessive decaying vegetation may deplete the oxygen content of water, killing fish. Begin treatment along the shore and proceed outwards in bands to allow fish to move into untreated areas.
Pastures; ornamental turf.	$\frac{2}{3}$ to $1\frac{1}{2}$ quarts (1 to 2 lbs. 2,4-D acid equivalent). In pastures apply in 5 to 15 gallons of water for ground applications and 3-10 gallons of water for aerial application. In ornamental turf apply in 10-50 gallons of water.	Do not use on Dichondra, Bent, Carpetgrass, Bermuda, St. Augustine grass or clover lawns. Do not treat newly seeded turf until after the second mowing and the lower dosage rate should be used. Do not graze dairy animals on treated areas within seven days after application.
Fall seeded wheat, oats and barley	$\frac{2}{3}$ to 1 pint ($\frac{1}{2}$ to $\frac{3}{4}$ lb. 2,4-D acid equivalent) in 5 to 10 gallons of water.	Apply in early spring when weeds are actively growing and before crop has reached the boot stage. Do not forage or graze treated fields within 2 weeks after application. Do not feed treated straw to livestock.
Spring seeded wheat, oats and barley	$\frac{2}{3}$ pint ($\frac{1}{2}$ lb. 2,4-D acid equivalent) in 5 to 10 gallons of water.	Apply after the fully tillered stage, but not during the boot to dough stage. Do not forage or graze treated fields within 2 weeks after application. Do not feed treated straw to livestock.
Corn sorghum	$\frac{2}{3}$ pint ($\frac{1}{2}$ lb. 2,4-D acid equivalent) in 5 to 10 gallons of water.	Make application when weeds are actively growing. Best results are obtained when weeds are small and corn is 4 to 18 inches tall or sorghum is 4 to 12 inches tall. Do not apply from tassling to dough stage. Use drop nozzles when either crop is over 10 inches tall.
Rice	$\frac{2}{3}$ to 1 quart (1 to $1\frac{1}{2}$ lbs. 2,4-D acid equivalent) in 5 to 10 gallons of water.	Make application when weeds are actively growing. Since rice plants are sensitive to 2,4-D during early stages of growth, it is advisable to delay spraying until the second or third week after flooding. Water in the fields should be shallow enough to permit direct application of the spray-mix to the weeds. All treatments should be made well in advance of heading.

ACCEPTED WITH COMMENTS