



CAUTION

Harmful if swallowed. Avoid inhaling spray mist. This product may cause skin irritation. Avoid contact with skin, eyes and clothing. In case of contact with skin flush with plenty of water; for eyes flush with plenty of water for at least 15 minutes and get medical attention. Keep out of reach of children.

Do not apply (except as recommended) on or near desirable plants or in locations where the chemical may be washed or moved into contact with their roots. Excessive amounts of this product in the soil may temporarily inhibit seed germination and all plant growth.

Prevent drift of product to desirable plants, particularly beans, clover, cotton, flowers, fruit trees, grapes, ornamentals, peas, potatoes, soybeans, sunflowers, tomatoes and other broadleaf crops during both the growing and dormant periods. Use coarse sprays which are less likely to drift. Vapors from this product may injure susceptible plants in the immediate vicinity.

Do not apply by airplane when sensitive crops are nearby. Consult your State or Local Authorities for possible aerial application or other application restrictions.

Do not contaminate irrigation ditches or water used for domestic purposes.

Do not contaminate water by cleaning of equipment or disposal of wastes.

Apply this product only as specified on this label.

To avoid injury to desirable plants, equipment used for Vegatrol LV-4D Herbicide should be thoroughly cleaned before reuse to handle or apply other agricultural chemicals.

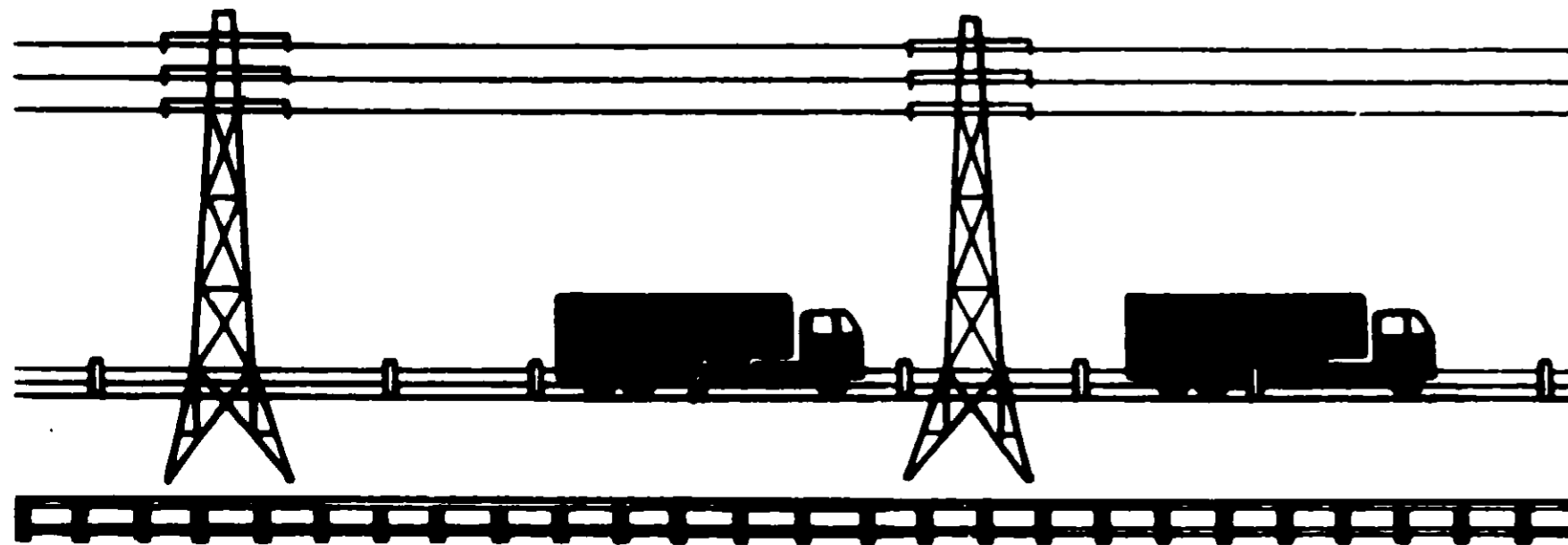
Do not store near fertilizers, seeds, insecticides or fungicides. Do not contaminate feed or foodstuffs. Do not mix with liquid fertilizers.

If stored below freezing, it may be necessary to warm to 40°F. and agitate before using. This does not affect the efficiency of this product.

CONTAINER DISPOSAL

Do not reuse empty container. Empty containers should be rinsed with water at least three times before disposal and rinse water should be added to the spray tank. Discard container in a safe place. Do not burn.

NOTICE—Because Velsicol Chemical Corporation has no control over storage, handling and conditions of use, which are of critical importance, Velsicol Chemical Corporation makes no representation or warranty, either express or implied, for results or residues greater than any tolerance which may be established by appropriate governmental agencies, due to misuse, improper handling or storage of this material. Nor does Velsicol Chemical Corporation assume any responsibility for injury to persons, crops, animals, soil or property arising out of misuse, improper handling or storage of this material.

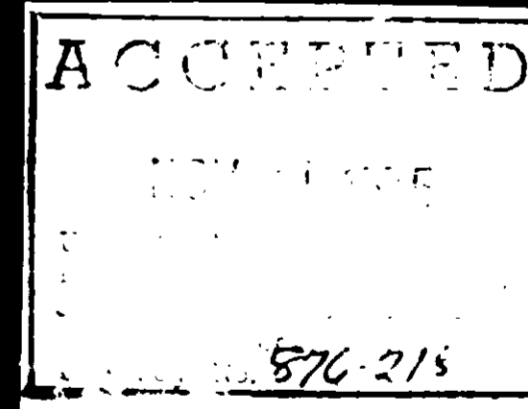


14122 460AB

VELSICOL Vegatrol LV-4D

HERBICIDE

ACTIVE INGREDIENTS	69.9
INERT INGREDIENTS	30.1
TOTAL	100.0%



CAUTION

KEEP OUT OF REACH OF CHILDREN

See Left Panel for Additional Cautions

VELSICOL CHEMICAL CORP.

341 E. OHIO STREET, CHICAGO, ILLINOIS 60611

Vegatrol LV-4D Herbicide will plants susceptible to 2,4-D.

Alligatorweed	Catnip
Arrowhead	Chickweed
Artichoke	Chicory
Bindweed (hedge, field, & European)	Cocklebur
Bitter wintercress	Creeping J
Boxelder	Curly indig
Buckhorn	Dandelion
Bull thistle	Dock
Bulrush	Duckweed
Burdock	Elderberry
Bur ragweed	Goldenrod
Buttercup	Ground ivy

Mix the recommended amount good spray coverage. Add the used. Mix well; then add the Best results are obtained with growing. Perennial and other give adequate control.

Use
Rights-of way (utility, highway, pipeline, railroad), fencerows, wasteland and similar non-cropland.
Lakes, ponds, drainage ditches (aquatic weeds)
Ornamental Turf
Pastures and rangeland
Fall seeded wheat, oats and barley
Spring seeded wheat, oats and barley
Corn Sorghum (post emergence)
Corn (pre emergence)

Comments

VELSICOL

Vegatrol LV-4D

HERBICIDE

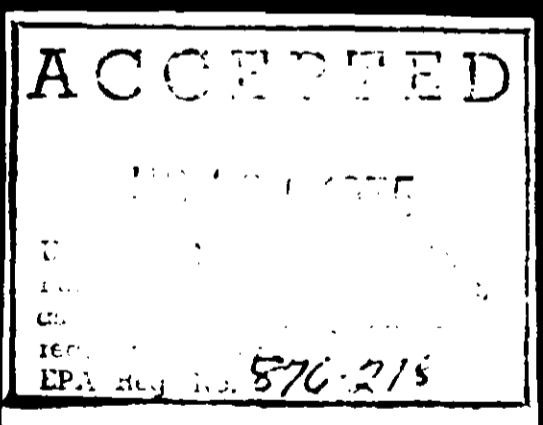
ACTIVE INGREDIENTS

Sodium Ester of 2,4-Dichlorophenoxyacetic Acid 69.9%

INERT INGREDIENTS

30.1%

TOTAL 100.0%



CAUTION

KEEP OUT OF REACH OF CHILDREN

See Left Panel for Additional Cautions

VELSICOL CHEMICAL CORP.

333 E. OHIO STREET, CHICAGO, ILLINOIS 60611

Vegatrol LV-4D Herbicide will kill or control the following in addition to many other noxious plants susceptible to 2,4-D.

- | | | | | |
|-------------------------------------|----------------|---------------|-----------------|------------------|
| Alligatorweed | Catnip | Hemp | Pennywort | Sowthistle |
| Arrowhead | Chickweed | Hoary cress | Pigweed | Stinkweed |
| Artichoke | Chicory | Honeysuckle | Plantain | Sumac |
| Bindweed (hedge, field, & European) | Cocklebur | Indigo | Poison ivy | Sunflower |
| Bitter wintercress | Coffeebean | Ironweed | Pokeweed | Virginia creeper |
| Boxelder | Creeping Jenny | Jimsonweed | Povertyweed | Waterhyacinth |
| Buckhorn | Curly indigo | Lambsquarters | Puncturevine | Waterlily |
| Bull thistle | Dandelion | Locoweed | Purslane | Waterprimrose |
| Bulrush | Dock | Mexicanweed | Rush | Wild garlic |
| Burdock | Duckweed | Morningglory | Russian thistle | Wild lettuce |
| Bur ragweed | Elderberry | Mustard | Sagebrush | Wild onion |
| Buttercup | Goldenrod | Nutgrass | Shepherdspurse | Wild radish |
| | Ground ivy | Parrotfeather | Smartweed | Willow |

DIRECTIONS FOR USE

Mix the recommended amount of Vegatrol LV-4D Herbicide with sufficient water to obtain good spray coverage. Add the Vegatrol LV-4D to about one-half the volume of water to be used. Mix well; then add the rest of the water and mix until spray mixture is uniform.

Best results are obtained when spraying is done while the weeds are young and actively growing. Perennial and other hard-to-control weeds may require a repeat application to give adequate control.

Use	Rate of Vegatrol LV-4D Per Acre	Application Directions and Limitations
Rights of way (utility, highway, pipeline, railroad), fence rows, wasteland and similar non-cropland	1 to 4 pints (1/2 to 2 lbs 2,4-D acid equivalent) in 25 to 100 gallons of water for ground application or 12 to 36 gallons for aerial application.	Do not graze dairy animals on treated areas within seven days after application.
Lakes, ponds, drainage ditches (aquatic weeds)	2 1/2 to 4 1/2 pints (1 1/4 to 2 1/4 lbs 2,4-D acid equivalent) in 50 to 100 gallons of water.	NOTE: Herbicide treatment of public waters requires a permit from the appropriate agencies in most states. Contact your State Conservation Department or Game and Fish Commission for aid in securing a permit if one is required in your state. Wet foliage thoroughly. Make application when leaves are fully developed above the water line and plants are actively growing. Do not apply to more than 1/3 to 1/2 of a lake or pond in any one month, because excessive decaying vegetation may deplete the oxygen content of water, killing fish. Begin treatment along the shore and proceed outward, in bands to allow fish to move into untreated areas.
Ornamental Turf	1 to 3 pints (1/2 to 1 1/2 lbs 2,4-D acid equivalent) depending on type and stage of weed growth, in 10-50 gallons of water.	Do not use on Dichondra, Bent, Carpetgrass, Bermuda, St. Augustine grass or clover lawns. Do not treat newly seeded turf until after the second mowing. The lower rate should be used.
Pastures and rangeland	1 to 4 pints (1/2 to 2 lbs 2,4-D acid equivalent) depending on type and stage of weed growth, in 5-15 gallons of water for ground application or 7-10 gallons of water for aerial application.	Use only on established stands of perennial grasses. Do not graze dairy animals on treated areas within seven days after application.
Pre-seeded wheat, oats and barley	1/2 to 3/4 pints (1/4 to 3/8 lbs 2,4-D acid equivalent) in 5 to 10 gallons of water.	Apply in early spring when weeds are small and winter crop has reached the boot stage. Do not forage or graze treated fields within 2 weeks after application. Do not feed treated straw to livestock.
Spring seeded wheat, oats and barley	1/2 pint (1/4 lb 2,4-D acid equivalent) in 5 to 10 gallons of water.	Apply after the fully tillered stage, except during the boot to dough stage. Do not forage or graze treated fields within 2 weeks after application. Do not feed treated straw to livestock.
Corn, Sorghum (post emergence)	1/2 pint (1/4 lb 2,4-D acid equivalent) in 5 to 10 gallons of water.	Make application when weeds are actively growing. Best results are usually obtained when weeds are small and corn is 4 to 18 inches tall or sorghum is 4 to 12 inches tall. Do not apply from tasseling to dough stage. Use drop nozzles when winter crop is over 10 inches tall.
Corn (pre emergence)	1 to 2 quarts (1 to 2 lbs 2,4-D acid equivalent) in 5 to 10 gallons of water per acre.	Use higher rates on heavy soils. Do not use on sandy soils. Plant corn as deep as feasible.

Comments

ACCEPTED WITH COMMENTS