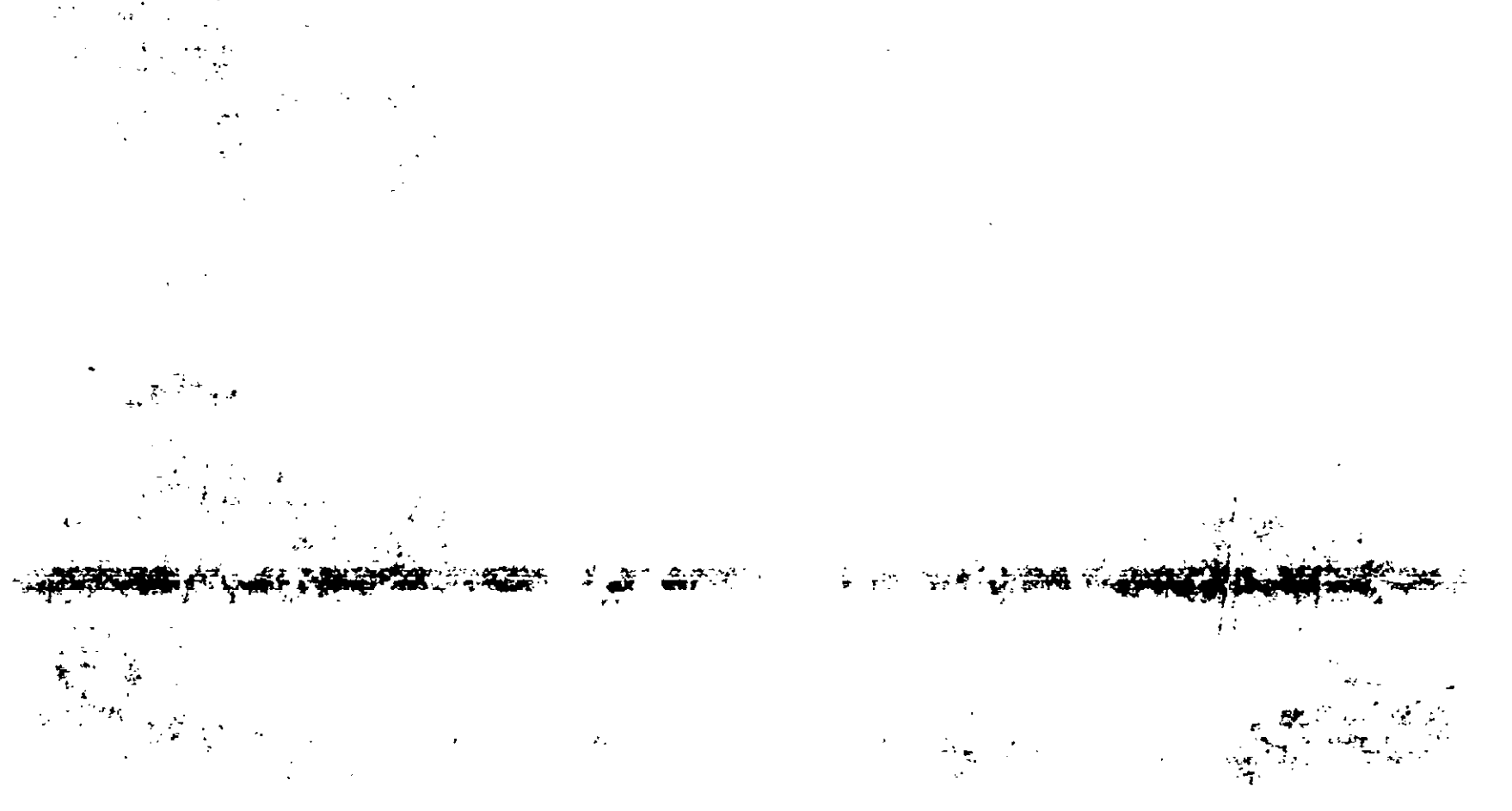


1972

Contains 2 1/2

Active

This section contains the main body of text from the document. It includes the year '1972' at the top, followed by the phrase 'Contains 2 1/2' and 'Active' on subsequent lines. The text is heavily obscured by noise and artifacts, making the rest of the content unreadable.



**CAUTION**

Harmful if swallowed. Avoid inhaling spray mist. This product may cause skin irritation. Avoid contact with skin, eyes and clothing. In case of contact with skin flush with plenty of water; for eyes flush with plenty of water for at least 15 minutes and get medical attention. Keep out of reach of children.

Do not apply (except as recommended) on or near desirable plants or in locations where the chemical may be washed or moved into contact with their roots. Excessive amounts of this product in the soil may temporarily inhibit seed germination and all plant growth. Vapors from this product may injure susceptible plants in the immediate vicinity.

Prevent drift of product to desirable plants, particularly beans, clover, cotton, flowers, fruit trees, grapes, ornamentals, peas, potatoes, soybeans, sunflowers, tomatoes and other broadleaf crops during both the growing and dormant periods. Use coarse sprays which are less likely to drift.

Do not apply by airplane when sensitive crops are nearby. Consult your State or Local Authorities for possible aerial application or other application restrictions.

Do not use around the home, recreation sites or similar areas.

Do not contaminate irrigation ditches or water used for domestic purposes.

This product is toxic to fish. Keep out of lakes, streams or ponds. Do not apply where run-off is likely to occur. Do not apply when weather conditions favor drift from areas treated. Do not contaminate water by cleaning of equipment or disposal of wastes.

Do not apply this product in any manner not specified on this label.

To avoid injury to desirable plants, equipment used for Vegatrol LV-2D-2T Herbicide should be thoroughly cleaned before reuse to handle or apply other agricultural chemicals.

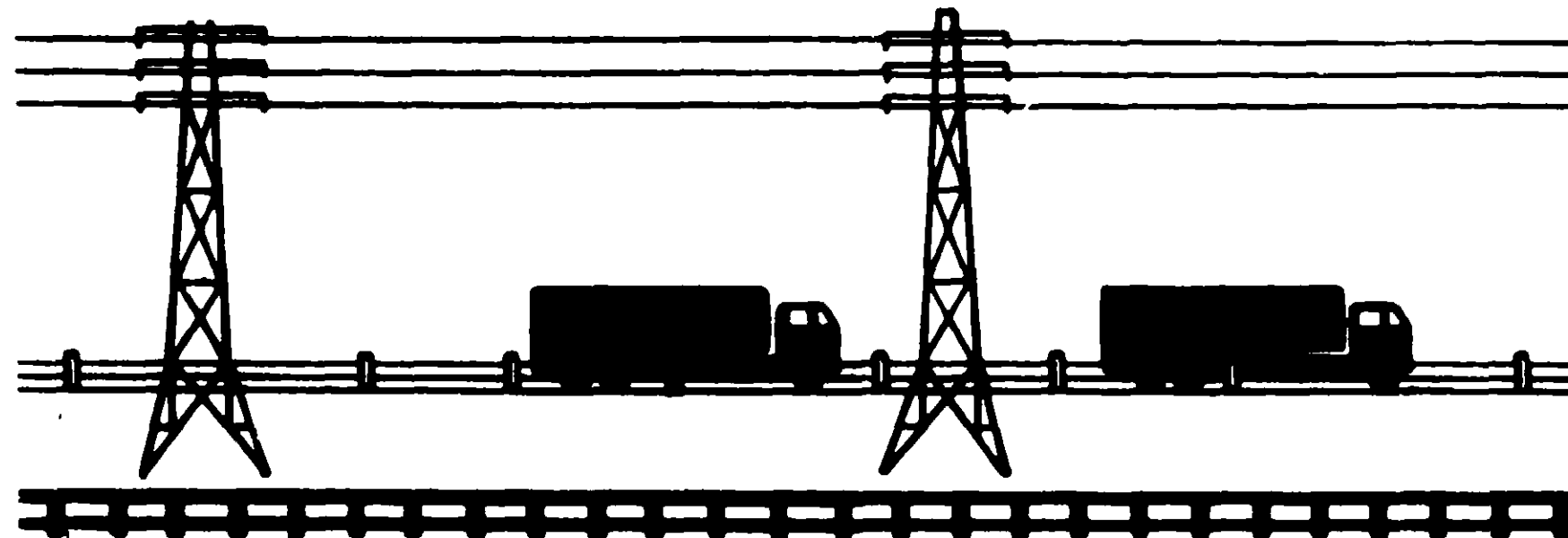
Do not store near fertilizer, seeds, insecticides or fungicides. Do not contaminate feed or foodstuffs. Do not mix with liquid fertilizers.

If stored below freezing, it may be necessary to warm to 40°F. and agitate before using. This does not affect the efficiency of this product.

**CONTAINER DISPOSAL**

Do not reuse empty container. Empty containers should be rinsed with water at least three times before disposal and rinse water should be added to the spray tank. Discard container in a safe place. Do not burn.

**NOTICE**—Because Velsicol Chemical Corporation has no control over storage, handling and conditions of use, which are of critical importance, Velsicol Chemical Corporation makes no representation or warranty, either express or implied, for results or residues greater than any tolerance which may be established by appropriate governmental agencies, due to misuse, improper handling or storage of this material. Nor does Velsicol Chemical Corporation assume any responsibility for injury to persons, crops, animals, soil or property arising out of misuse, improper handling or storage of this material.



14125-460AB

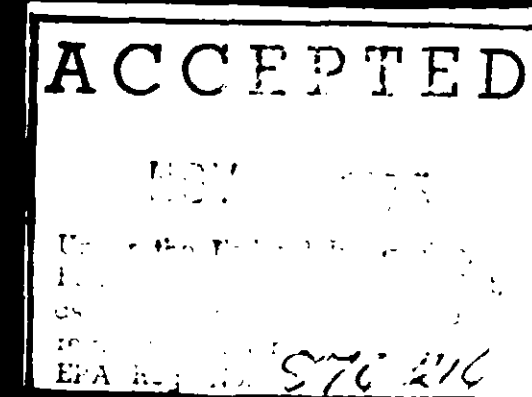
# VELSICOL

## Vegatrol LV-2D-2T

### HERBICIDE FOR BRUSH CONTROL

NET CONTENTS

101A 1000



**CAUTION**

KEEP OUT OF REACH OF CHILDREN

VELSICOL CHEMICAL CORP.

- Vegatrol LV-2D-2T will kill susceptible to 2,4-D and 2,4,5-T
- Alder
  - Aspen
  - Birch
  - Box elder
  - Blackberry
  - Buckbrush
  - Chokeberry
  - Chokecherry

Vegatrol LV-2D-2T Herbicide or Number 2 fuel oil or kerosene. When water is used as a diluent, then add the rest of the water in a separate container (no to come in contact with the volume of water in the sprayer) mixing while spraying to avoid injury to desirable plants. Vegatrol LV-2D-2T may be used in areas (along fences, rights-of-way and foliage thoroughly. Best results are obtained by repeating application. Do not graze dairy animals. Do not graze meat animals. Do not apply to newly seeded areas.

Area or Type of Treatment
Foliage Treatment (woody plants 6 to 8 feet in height)
Foliage Treatment (Poison ivy and brambles)
Basal Bark Treatment
Frill Treatment
Stump Treatment
Foliage Treatment (Aerial application)

*Comments*

# VELSICOL

## Vegatrol LV-2D-2T

### HERBICIDE FOR BRUSH CONTROL

ACCEPTED

NOV 1975

Under the Federal Insecticide, Fungicide, and Rodenticide Act, this product has been found to comply with the requirements of EPA Reg. 261.216

**CAUTION**

KEEP OUT OF REACH OF CHILDREN

VELSICOL CHEMICAL CORP.

Vegatrol LV-2D-2T will kill or control the following as well as many other noxious plants susceptible to 2,4-D and 2,4,5-T.

Alder	Cottonwood	Mulberry	Sassafras
Aspen	Elder	Oak	Sumac
Birch	Elderberry	Osage orange	Sweet gum
Box elder	Elm	Persimmon	Wild cherry
Blackberry	Hawthorn	Poison ivy	Wild grape
Buckbrush	Hickory	Poison oak	Wild plum
Chokeberry	Honeysuckle	Poplar	Willow
Chokecherry	Locust	Sage brush	

#### DIRECTIONS FOR USE

Vegatrol LV-2D-2T Herbicide can be mixed with either water or oils such diesel oil, Number 1 or Number 2 fuel oil or kerosene, or as an oil-water spray when required.

When water is used as a carrier or diluent, mix the recommended dosage of Vegatrol LV-2D-2T Herbicide with one-half of the volume required for adequate coverage. Mix well, then add the rest of the water and agitate thoroughly and continuously.

When used as an oil-water spray, add the required amount of Vegatrol LV-2D-2T to the oil in a separate container (not the spray tank). Do not allow any water of oil-water mixture to come in contact with this mixture as it may gel. Add this mixture to half the required volume of water in the spray tank. Mix well, then add the remaining water. Continue mixing while spraying to assure a uniform emulsion.

Vegatrol LV-2D-2T may be used to control trees and brush in forest management, noncrop areas (along fences, rights-of-way and similar areas) pastures and rangelands. Wet bark and foliage thoroughly. Best results are obtained when plants are well leafed and actively growing. Repeat applications may be necessary if new growth occurs.

Do not graze dairy animals on treated areas within 6 weeks after application.

Do not graze meat animals on treated areas within 2 weeks of slaughter.

Do not apply to newly seeded areas.

Area or Type of Treatment	Rate of Vegatrol LV-2D-2T	Application Directions and Limitations
Foliage Treatment (woody plants 6 to 8 feet in height)	Dilute 1 gallon (2 lbs. 2,4-D and 2 lbs. 2,4,5-T acid equivalent) with 99 gallons of water.	Foliage and bark should be thoroughly wet with a coarse spray. Repeat applications may be necessary if new growth occurs. Observe grazing restrictions given above.
Foliage Treatment (Poison ivy and brambles)	Dilute 2 quarts (1 lb. 2,4-D and 1 lb. 2,4,5-T acid equivalent) with 100 gallons of water.	Foliage and bark should be thoroughly wet with a coarse spray. Repeat applications may be necessary if new growth occurs. Observe grazing restrictions given above.
Basal Bark Treatment	Dilute 3 gallons (6 lbs. 2,4-D and 6 lbs. 2,4,5-T acid equivalent) with 97 gallons of oil (equivalent to 1 pint in 4 gallons).	Apply using a knapsack sprayer to cover bark around the trunk and stems from soil surface to a height of 12 to 15 inches. Cover bark thoroughly even to the point of runoff at the soil line. Application can be made any time of the year except when snow or water prevents application at the soil line.
Frill Treatment	Dilute 3 gallons (6 lbs. 2,4-D and 6 lbs. 2,4,5-T acid equivalent) with 97 gallons of oil (equivalent to 1 pint in 4 gallons).	Application may be made during any season. For control of plants having trunks more than 6 inches in diameter, make overlapping cuts in the bark around the trunk as close to the ground as is possible. Treat fresh cuts with the diluted mixture.
Stump Treatment	Dilute 3 gallons (6 lbs. 2,4-D and 6 lbs. 2,4,5-T acid equivalent) with 97 gallons of oil (equivalent to 1 pint in 4 gallons).	Apply to freshly cut stumps of large trees or woody plants. Make application with a knapsack sprayer having a nozzle of medium orifice or by a brush or swab. For best results, both sides and top of stump should be thoroughly wet. Application can be made any time of the year except when snow or water prevents application at the soil line. Repeat applications if new growth occurs.
Foliage Treatment (Aerial application)	Dilute 1 to 3 quarts with 1 to 3 gallons of oil, then mix with enough water to make 5 gallons. Apply 5 gallons of this mixture per acre.	Best results are obtained when plants are well leafed and actively growing. Observe grazing restrictions listed above.

Comments