

### CAUTION

Do not inhale. Avoid contact with skin, eyes, and clothing. In case of contact with eyes, flush with plenty of water. Flush eyes with plenty of water for at least 10 minutes. Get medical attention. Keep out of reach of children.

### CONTAINER DISPOSAL

Do not reuse empty container. The empty container should be rinsed with water and the rinsates be re-disposed. The rinse water should be added to the remaining product in a safe place. Follow State Recommendations for empty container disposal.

### IMPORTANT

Do not apply (except as recommended) on or near desirable plants, or in locations where the chemical may be washed or moved into contact with their roots. Applications by ground rigs and hand dispensers should be carried out only when there is no hazard from drift of product to susceptible plants such as alfalfa, flowers, fruit trees, grapes, ornamentals, peas, potatoes, soybeans, sugarcorn, and tomatoes, during both the growing and dormant periods. (These species are less likely to drift.) Do not contaminate irrigation ditches which are used for domestic purposes. Do not allow this product to come in direct contact with seeds, fertilizers, insecticides, or fungicides. To avoid injury to equipment, equipment used for **BANVEL 710** should be thoroughly cleaned before reuse to handle or apply any other agricultural chemicals.

Do not graze dairy animals on treated areas within 6 weeks after application.

Do not slaughter animals on treated areas within 2 weeks of slaughter.

**NOTICE:** The user will be held liable for any contamination or control over storage, handling, or disposal of this material. For further information, Velsicol Chemical Corporation will accept no responsibility, without express compliance, for results or residues of this material, or for any claims which may be established by appropriate governmental agencies, due to misuse, improper handling or storage of this material. Nor does Velsicol Chemical Corporation assume any responsibility for injury to persons, crops, animals, soil, or property arising out of misuse, improper handling or storage of this material.

# VELSICOL Banvel-710

## WATER SOLUBLE INDUSTRIAL HERBICIDE FOR BRUSH AND BROADLEAF WEED CONTROL

Contains 1 Pound Dicamba and 2 Pounds 2,4,5-T Per Gallon

### ACTIVE INGREDIENTS:

D. methylamine salt of dicamba (3,6-dichloro-o-anisic acid)	12.70%
D. methylamine salts of related acids	1.75%
Dimethylamine salt of 2,4,5-trichlorophenoxyacetic acid	24.90%

### INERT INGREDIENTS

	60.65%
TOTAL	100.00%

E.P.A. Reg. No. 876-176-AA

NET CONTENTS: 5 GALLONS

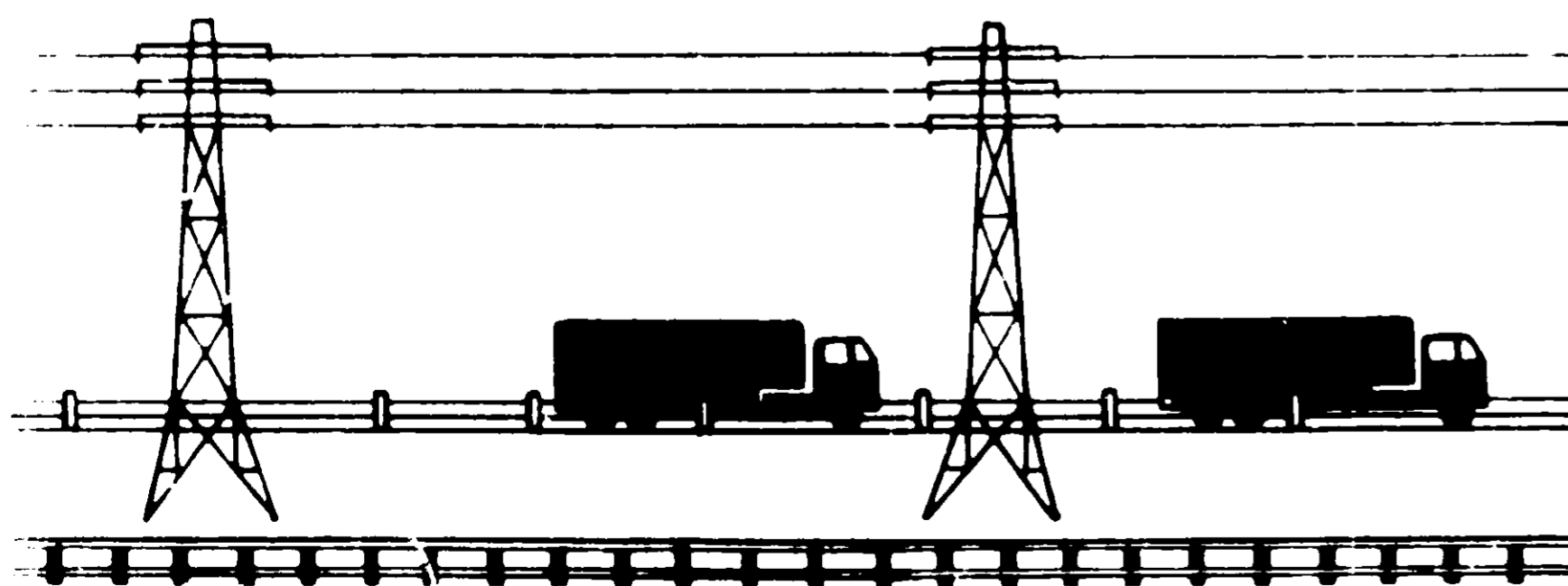
## CAUTION

KEEP OUT OF REACH OF CHILDREN

See Side Panel for Additional Cautions

**VELSICOL CHEMICAL CORP.**

341 E. OHIO STREET, CHICAGO, ILLINOIS 60611



### CAUTION

Harmful if swallowed. Avoid contact with skin, eyes, and clothing. In case of contact, wash exposed skin with plenty of soap and water; flush eyes with plenty of water for at least 15 minutes and get medical attention. Keep out of reach of children.

### CONTAINER DISPOSAL

Do not reuse empty container. The empty containers should be rinsed with water at least three times before disposal, and rinse water should be added to spray tank. Discard container in a safe place. Follow State Recommendations regarding container disposal.

### IMPORTANT

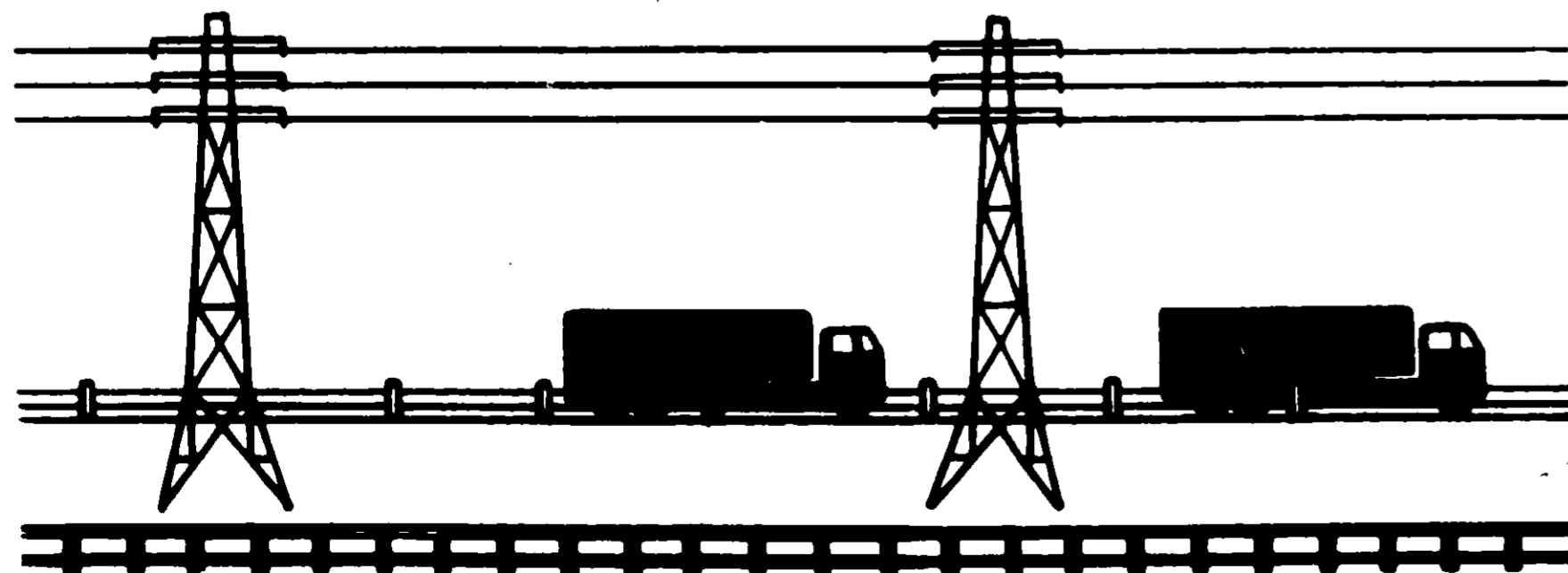
Do not apply (except as recommended) on or near desirable plants, or in locations where the chemical may be washed or moved into contact with their roots. Applications by ground rigs and hand dispensers should be carried out only when there is no hazard from drift of product to susceptible plants such as beans, flowers, fruit trees, grapes, ornamentals, peas, potatoes, soybeans, sunflowers and tomatoes, during both the growing and dormant periods. (Coarse sprays are less likely to drift.) Do not contaminate irrigation ditches or water used for domestic purposes. Do not allow this product to come in direct contact with seeds, fertilizers, insecticides or fungicides. To avoid injury to desirable plants, equipment used for **BANVEL<sup>®</sup> 710** should be thoroughly cleaned before reuse to handle or apply any other agricultural chemicals.

Do not graze dairy animals on treated areas within 6 weeks after application.

Do not graze meat animals on treated areas within 2 weeks of slaughter.

**NOTICE:** Because Velsicol Chemical Corporation has no control over storage, handling, and conditions of use, which are of critical importance, Velsicol Chemical Corporation makes no representation or warranty, either express or implied, for results or residues greater than any tolerance which may be established by appropriate governmental agencies, due to misuse, improper handling or storage of this material. Nor does Velsicol Chemical Corporation assume any responsibility for injury to persons, crops, animals, soil or property arising out of misuse, improper handling or storage of this material.

17261400



# VELSICOL Banvel-710

WATER SOLUBLE INDUSTRIAL HERBICIDE  
FOR BRUSH AND BROADLEAF WEED CONTROL

EPA Reg. No. 476-176-AA

NET CONTENTS 5 GALLONS

## CAUTION

KEEP OUT OF REACH OF CHILDREN

See Side Panel for Additional Cautions

VELSICOL CHEMICAL CORP.

111 E. 50th Street, Chicago, Illinois 60611

### USE

Right-of-Way  
(utility, railroad,  
pipeline).  
Nonselective forest  
control, ~~grass~~  
land and similar  
land

For control of an  
deep-rooted perenn-  
leaf weeds

To reduce the  
with a drift re-  
designed to rec

VELSICOL

# Banvel-710

WATER SOLUBLE INDUSTRIAL HERBICIDE  
FOR BRUSH AND BROADLEAF WEED CONTROL

**CAUTION**

KEEP OUT OF REACH OF CHILDREN

VELSICOL CHEMICAL CORP.

**DIRECTIONS FOR USE**

USE	BRUSH/WEED	RATE/100 GAL- SPRAY MIX	APPLICATION DIRECTIONS
Rights-of-Way (utility, railroad, highway, pipeline).  Nonselective forest brush control, <del>haze</del> <del>cons.</del> waste land and similar noncrop- land.	For the control of unwanted woody brush including:	1 gallon BANVEL-710 Herbi- cide plus 99 gallons of water	<b>Hydraulic Spray Application Stem Foliage-High Water Volume</b>  Apply BANVEL-710 Herbicide after leaves are fully developed and until three weeks before frost.  Treat all stems and foliage to run off with special emphasis on cover- ing the root crown.  Use 200 to 300 gallons of spray mix per acre depending on the height and density of the brush.
	Alder Ash Aspen Basswood Cedar Cottonwood Dogwood Elaeagnus Eucalyptus Hamamelis Hornbeam Larch Maple Mountain Ash Oak Persimmon Pine Poplar Sassafras Spruce (Christmasberry) Sycamore Tamarack Tulip	9 gallons BANVEL-710 Herbi- cide plus 91 gallons of water	<b>Back Pack Mist Blower Application Stem Foliage-Low Water Vol- ume</b>  Apply BANVEL-710 Herbicide after leaves are fully developed and until three weeks before frost.  Treat all stems and root crown to runoff. Use mist blower application on brush up to 6 feet tall at the rate of 30 to 35 gallons of spray mix per acre of brush.
	Juniper Loblolly Pine Pine Sassafras Spruce Tamarack Tulip Willow Witchhazel Yucca and similar woody plant species	3 Gallons BANVEL-710 Herbi- cide plus 12 gallons of water	<b>Aerial Application 15 Gallons of Spray Mix per Acre</b>  Apply BANVEL-710 Herbicide after leaves are fully developed and until three weeks before frost.  Apply at the rate of 15 gallons of spray mix per acre of brush.
		3 Gallons BANVEL-710 Herbi- cide plus 27 gallons of water	<b>Aerial Application 30 Gallons of Spray Mix per Acre</b>  Apply BANVEL-710 Herbicide after leaves are fully developed and until three weeks before frost.  Apply at the rate of 30 gallons of spray mix per acre of brush.
For control of annual and deep-rooted perennial broad- leaf weeds	<b>Perennial Broadleaf Weeds and Vines</b>  Canada thistle Curly dock Dandelion leafstalk Field bindweed (perennial) Larkspur Milkweed Perennial ragweed Punchgrain Redvine Russian Knapweed Tansy ragwort Tigweed and many other pe- rennial broadleaf weeds	1 gallon BANVEL-710 Herbi- cide plus 99 gallons of water	For effective broad spectrum con- trol of annual and perennial broad- leaf weeds and vines, apply BANVEL- 710 Herbicide when weeds are actively growing.  Apply at the rate of 100 gallons of spray mix per acre.  If less than 100 gallons of spray mix is applied per acre, increase the concentration of BANVEL 710 Herbicide to maintain the same rate of active ingredients per acre of brush.
	<b>Annual Broadleaf Weeds</b>  Carnation Chickweed Clover Cocklebur Dandelion English daisy Henbit Knapweed Lambquarters Muskard Pigweed Purslane Ragweed Sheep sorrel Smartweed Velvetleaf Wild buckwheat and many other an- nual broadleaf weeds	0.5 gallons BANVEL-710 Herbicide plus 99.5 gallons of water.	
To reduce the hazards of spray drift when applying this product by ground or air equipment, apply with a drift reducing agent such as foam spray adjuvant, invert system or with other systems designed to reduce spray drift.			

**VELSICOL**

# Banvel-710

**WATER SOLUBLE INDUSTRIAL HERBICIDE  
FOR BRUSH AND BROADLEAF WEED CONTROL**

Contains 1 Pound Dicamba and 2 Pounds 2,4,5-T Per Gallon

**ACTIVE INGREDIENTS**

**INERT INGREDIENTS**

E.P.A. Reg. No. 876-176-AA

NET CONTENTS 5 GALLONS

**CAUTION**

**KEEP OUT OF REACH OF CHILDREN**

See Side Panel for Additional Cautions

**VELSICOL CHEMICAL CORP.**

341 E. OHIO STREET, CHICAGO, ILLINOIS 60611

**DIRECTIONS FOR USE**

USE	BRUSH/WEED	RATE/100 GAL. SPRAY MIX	APPLICATION DIRECTIONS
<p><u>Right-of-Way</u> (utility, railroad, highway, pipeline).</p> <p>Nonselective forest brush control, <del>open areas</del> waste land and similar noncrop land</p>	<p>For the control of unwanted woody brush including:</p> <ul style="list-style-type: none"> <li>Alder</li> <li>Ash</li> <li>Aspen</li> <li>Basswood</li> <li>Cedar</li> <li>Cherry</li> <li>Chinquapin</li> <li>Cucumber tree</li> <li>Gum</li> <li>Guano</li> <li>Hamwood</li> <li>Elm</li> <li>Hemlock</li> <li>Hornbeam</li> <li>Locust</li> <li>Maple</li> <li>Mesquite</li> <li>Oak</li> <li>Persimmon</li> <li>Pine</li> <li>Poplar</li> <li>Sassafras</li> <li>Schinus (christmasberry)</li> <li>Spruce</li> <li>Spruce</li> <li>Sumac</li> <li>Sycamore</li> <li>Thornapple</li> <li>Thornberry</li> <li>Wild Plum</li> <li>Willow</li> <li>Witchhazel</li> <li>Yucca</li> </ul> <p>and similar woody plant species</p>	1 gallon BANVEL 710 Herbicide plus 99 gallons of water	<p><b>Hydraulic Spray Application Stem Foliage-High Water Volume</b></p> <p>Apply BANVEL 710 Herbicide after leaves are fully developed and until three weeks before frost</p> <p>Treat all stems and foliage to runoff with special emphasis on covering the root crown</p> <p>Use 200 to 300 gallons of spray mix per acre depending on the height and density of the brush</p>
		9 gallons BANVEL 710 Herbicide plus 91 gallons of water	<p><b>Back Pack Mist Blower Application Basal Stem Foliage-Low Water Volume</b></p> <p>Apply BANVEL 710 Herbicide after leaves are fully developed and until three weeks before frost</p> <p>Treat all stems and root crown to runoff. Use mist blower application on brush up to 6 feet tall at the rate of 30 to 35 gallons of spray mix per acre of brush</p>
		3 Gallons BANVEL 710 Herbicide plus 12 gallons of water	<p><b>Aerial Application</b></p> <p>15 Gallons of Spray Mix per Acre</p> <p>Apply BANVEL 710 Herbicide after leaves are fully developed and until three weeks before frost.</p> <p>Apply at the rate of 15 gallons of spray mix per acre of brush</p>
		3 Gallons BANVEL 710 Herbicide plus 27 gallons of water	<p><b>Aerial Application</b></p> <p>30 Gallons of Spray Mix per Acre</p> <p>Apply BANVEL 710 Herbicide after leaves are fully developed and until three weeks before frost</p> <p>Apply at the rate of 30 gallons of spray mix per acre of brush</p>
<p>For control of annual and deep rooted perennial broadleaf weeds</p>	<p><b>Perennial Broadleaf Weeds and Vines</b></p> <ul style="list-style-type: none"> <li>Canada thistle</li> <li>Curly dock</li> <li>Dalmatian toadflax</li> <li>Field bindweed (morningglory)</li> <li>Leafy spurge</li> <li>Milkweed</li> <li>Perennial ragweed</li> <li>Puncturevine</li> <li>Redvine</li> <li>Russian knapweed</li> <li>Tansy ragwort</li> <li>Trevine</li> </ul> <p>and many other perennial broadleaf weeds</p>	1 gallon BANVEL 710 Herbicide plus 99 gallons of water	<p>For effective broad spectrum control of annual and perennial broadleaf weeds and vines, apply BANVEL 710 Herbicide when weeds are actively growing</p> <p>Apply at the rate of 100 gallons of spray mix per acre</p> <p>If less than 100 gallons of spray mix is applied per acre, increase the concentration of BANVEL 710 Herbicide to maintain the same rate of active ingredient per acre of brush</p>
		<p><b>Annual Broadleaf Weeds</b></p> <ul style="list-style-type: none"> <li>Carpetweed</li> <li>Chickweed</li> <li>Clover</li> <li>Cocklebur</li> <li>Dogfennel</li> <li>English daisy</li> <li>Henbit</li> <li>Knawel</li> <li>Lambsquarters</li> <li>Mustard</li> <li>Pigweed</li> <li>Purslane</li> <li>Ragweed</li> <li>Sheep sorrel</li> <li>Smartweed</li> <li>Velvetleaf</li> <li>Wild buckwheat</li> </ul> <p>and many other annual broadleaf weeds</p>	0.5 gallons BANVEL 710 Herbicide plus 99.5 gallons of water

To reduce the hazards of spray drift when applying this product by ground or air equipment, apply with a drift reducing agent such as foam spray adjuvant, invert system or with other systems designed to reduce spray drift.