

CAUTION

Harmful if swallowed. Avoid contact with skin, eyes, and clothing. In case of contact, wash exposed skin with plenty of soap and water; flush eyes with plenty of water for at least 15 minutes and get medical attention. Keep out of reach of children.

CONTAINER DISPOSAL

Do not reuse empty container. The empty containers should be rinsed with the oil involved at least three times before disposal, and rinse oils should be added to spray tank. Discard container in a safe place. Follow State Recommendations regarding container disposal.

IMPORTANT

Do not apply (except as recommended) on or near desirable plants, or in locations where the chemical may be washed or moved into contact with their roots. Application by ground and aerial methods should be carried out only when there is no hazard from drift of product to susceptible plants such as beans, flowers, fruit trees, grapes, ornamentals, peas, potatoes, soybeans, sunflowers and tomatoes, during both the growing and dormant periods. (Coarse sprays are less likely to drift.) Do not contaminate irrigation ditches or water used for domestic purposes. Do not allow this product to come in direct contact with seeds, insecticides or fungicides. To avoid injury to desirable plants, equipment used for BANVEL[®]-510 Herbicide should be thoroughly cleaned before reuse to handle or apply any other agricultural chemicals.

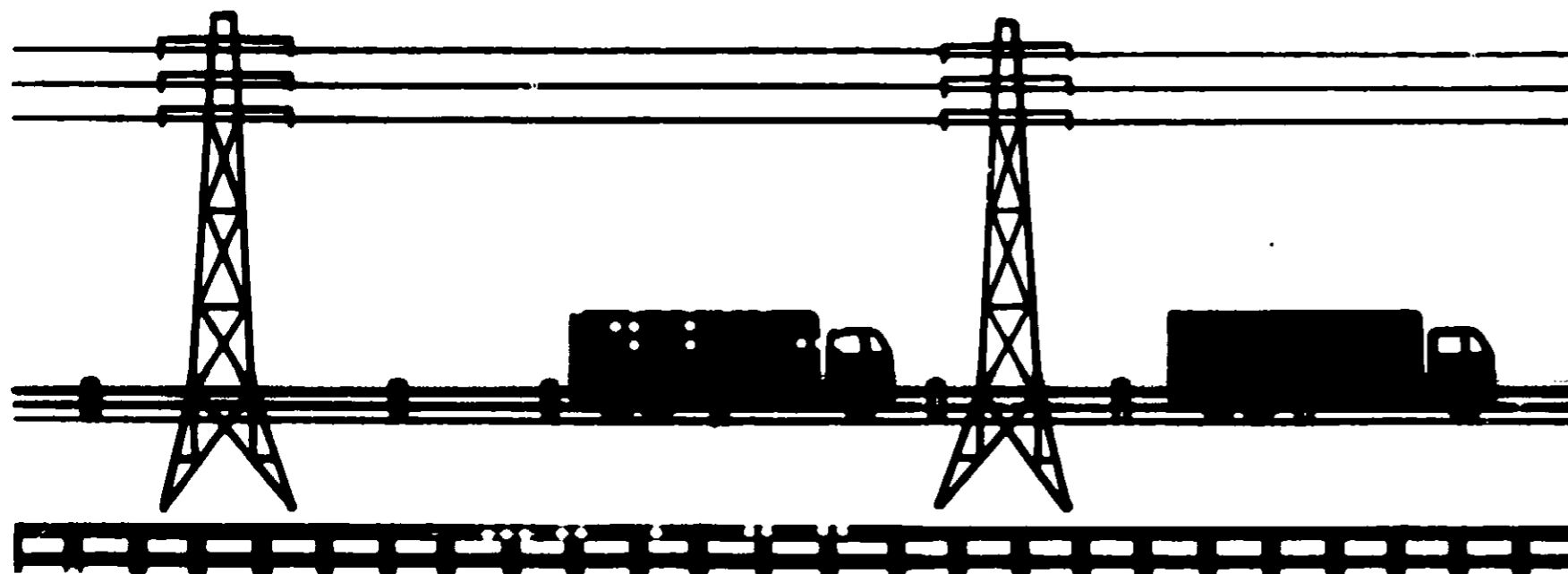
Do not graze dairy animals on treated areas within 6 weeks after application.

Do not graze meat animals on treated areas within 2 weeks of slaughter.

DO NOT USE, POUR, SPILL OR STORE NEAR HEAT OR OPEN FLAME.

NOTICE: Because Velsicol Chemical Corporation has no control over storage, handling, and conditions of use, which are of critical importance, Velsicol Chemical Corporation makes no representation or warranty, either express or implied, for results or residues greater than any tolerance which may be established by appropriate governmental agencies, due to misuse, improper handling or storage of this material. Nor does Velsicol Chemical Corporation assume any responsibility for injury to persons, crops, animals, soil or property arising out of misuse, improper handling or storage of this material.

07258-230



VELSICOL



CAUTION

KEEP OUT OF REACH OF CHILDREN

VELSICOL CHEMICAL CORP.

BANVEL[®]-5
diesel oil o

USE BANV
railroad, h
control a

BANVEL[®]-5
alder, app
elm, fir,
sassafr

DORM

brush or tree
put special

GROUND APPL
Hydraulic Spr
BANVEL[®]-510[®]
100 gallons of
100 gallons of

Back Pack Mi
gallons of BAN
to make 100 g
rate of 30 ga
brush

AERIAL APPLN
(ington Only)
Mix 1 gallon
gallons of oil
spray mixture

CAUTION

Harmful if swallowed. Avoid contact with skin, eyes, and clothing. In case of contact, wash exposed skin with plenty of soap and water; flush eyes with plenty of water for at least 15 minutes and get medical attention. Keep out of reach of children.

CONTAINER DISPOSAL

Do not reuse empty container. The empty containers should be rinsed with the oil involved at least three times before disposal, and rinse oils should be added to spray tank. Discard container in a safe place. Follow State Recommendations regarding container disposal.

IMPORTANT

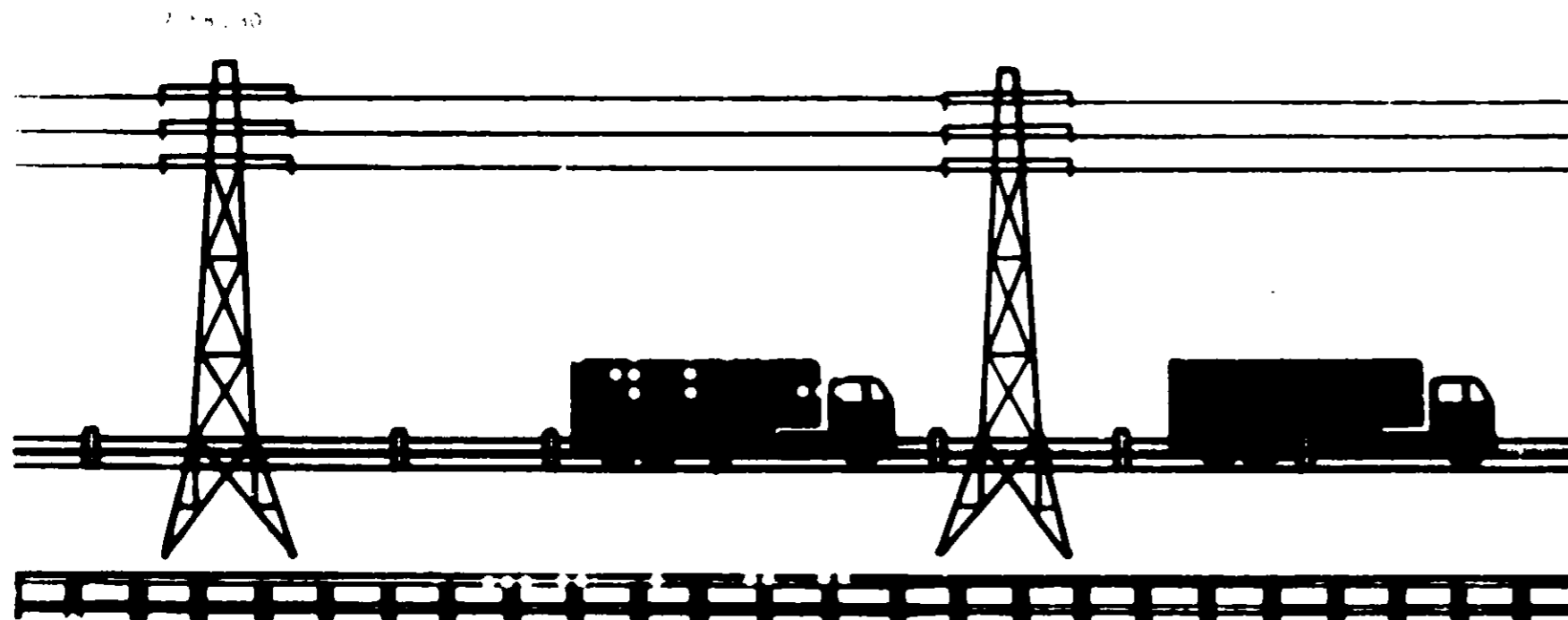
Do not apply (except as recommended) on or near desirable plants, or in locations where the chemical may be washed or moved into contact with their roots. Applications by ground rigs and hand dispensers should be carried out only when there is no hazard from drift of product to susceptible plants such as beans, flowers, fruit trees, grapes, ornamentals, peas, potatoes, soybeans, sunflowers and tomatoes, during both the growing and dormant periods. (Coarse sprays are less likely to drift.) Do not contaminate irrigation ditches or water used for domestic purposes. Do not allow this product to come in direct contact with seeds, insecticides or fungicides. To avoid injury to desirable plants, equipment used for **BANVEL[®]-510** Herbicide should be thoroughly cleaned before reuse to handle or apply any other agricultural chemicals.

Do not graze dairy animals on treated areas within 6 weeks after application.

Do not graze meat animals on treated areas within 2 weeks of slaughter.

DO NOT USE, POUR, SPILL OR STORE NEAR HEAT OR OPEN FLAME.

NOTICE: Because Velsicol Chemical Corporation has no control over storage, handling, and conditions of use, which are of critical importance, Velsicol Chemical Corporation makes no representation or warranty, either express or implied, for results or residues greater than any tolerance which may be established by appropriate governmental agencies, due to misuse, improper handling or storage of this material. Nor does Velsicol Chemical Corporation assume any responsibility for injury to persons, crops, animals, soil or property arising out of misuse, improper handling or storage of this material.



VELSICOL

BANVEL 510

HERBICIDE

WEED CONTROL

Water	11.50%
Wettable	1.52%
Isobutyl alcohol	32.80%
Xylene	26.44%
Normal Alcohol	27.84%
TOTAL	100.00%

Contains 15% 2,4-D and 5% 2,4,5-trichlorophenoxyacetic acid

NET CONTENTS 5 GALLONS

CAUTION

KEEP OUT OF REACH OF CHILDREN

See Side Panel for Additional Cautions

VELSICOL CHEMICAL CORP.

341 E. OHIO STREET, CHICAGO, ILLINOIS 60611

BANVEL[®]-510
diesel oil or

USE BANVEL[®]-510
railroad. In
control and

BANVEL[®]-510
alder, apple
elm, fir, grape
sassafras

DORMANT

brush or tree
put special en

GROUND APPL
Hydraulic Spr
BANVEL[®] 510
100 gallons of
100 gallons of

Back Pack Mix
gallons of BAN
to make 100 gal
rate of 30 gal
brush

AERIAL APPLIC
ington Only

Mix 1 gallon
gallons of oil a
spray mixture