

OVERHEAD

Wipe-Off

**OIL SOLUBLE INDUSTRIAL HERBICIDE
FOR BRUSH AND BROADLEAF WEED CONTROL**

Contains 1 Pound Dicamba and 2 Pounds 2,4-D Per Gallon

ACTIVE INGREDIENTS:

- Dicamba (3,6-dichloro-g-anisic acid)
- Refined acids
- Isocetyl ester of 2,4-dichlorophenoxyacetic acid*
- Xylene

INERT INGREDIENTS

TOTAL

*Equivalent to 23.21% 2,4-dichlorophenoxyacetic acid

E.P.A. Reg. No. 876-188-AA

NET CONTENTS: 5 GALLONS

CAUTION

KEEP OUT OF REACH OF CHILDREN
DO NOT TAKE INTERNALLY
DO NOT GET IN EYES OR ON SKIN
DO NOT BREATHE VAPORS
DO NOT GET ON CLOTHING
DO NOT GET ON FACE OR UNDER CLOTHING
DO NOT GET ON SHOES OR FEET
DO NOT GET ON HANDS OR WRISTS
DO NOT GET ON NECK OR THROAT
DO NOT GET ON HAIR OR SCALP
DO NOT GET ON EARS OR NOSE
DO NOT GET ON MOUTH OR LIPS
DO NOT GET ON TEETH OR GUMS
DO NOT GET ON TONGUE OR PALATE
DO NOT GET ON PHARYNX OR ESOPHAGUS
DO NOT GET ON STOMACH OR INTESTINES
DO NOT GET ON BLADDER OR URETERS
DO NOT GET ON UTERUS OR VAGINA
DO NOT GET ON PENIS OR SCROTUM
DO NOT GET ON TESTES OR EPIDIDYMIS
DO NOT GET ON PROSTATE GLAND OR URETHRA
DO NOT GET ON VULVA OR CLITORIS
DO NOT GET ON PERINEUM OR ANUS
DO NOT GET ON RECTUM OR SIGMOID COLON
DO NOT GET ON ILEUM OR CAECUM
DO NOT GET ON CECUM OR APPENDIX
DO NOT GET ON COLON OR Sigmoidum
DO NOT GET ON DUODENUM OR JEJUNUM
DO NOT GET ON ILEUM OR ILEOCECUM
DO NOT GET ON ILEOCECUM OR ILEOCECUM
DO NOT GET ON ILEOCECUM OR ILEOCECUM

CAUTION

Harmful if swallowed. Avoid contact with skin, eyes, and clothing. In case of contact, wash exposed skin with plenty of soap and water. Flush eyes with plenty of water for at least 15 minutes and get medical attention. Keep out of reach of children.

CONTAINER DISPOSAL

Do not reuse empty container. The empty containers should be rinsed with the oil involved at least three times before disposal, and rinse oils should be added to spray tank. Discard container in a safe place. Follow State Recommendations regarding container disposal.

IMPORTANT

Do not apply (except as recommended) on or near desirable plants, or in locations where the chemical may be washed or moved into contact with their roots. Applications by ground rigs and hand dispensers should be carried out only when there is no hazard from drift of product to susceptible plants such as beans, flowers, fruit trees, grapes, ornamentals, peas, potatoes, soybeans, sunflowers and tomatoes, during both the growing and dormant periods. (Coarse sprays are less likely to drift.) Do not contaminate irrigation ditches or water used for domestic purposes. Do not allow this product to come in direct contact with seeds, insecticides or fungicides. To avoid injury to desirable plants, equipment used for **BANVEL[®]-520** Herbicide should be thoroughly cleaned before reuse to handle or apply any other agricultural chemicals.

Do not graze dairy animals on treated areas within 7 days after application.

DO NOT USE, POUR, SPILL, OR STORE NEAR HEAT OR OPEN FLAME

NOTICE: Because Velsicol[®] is a registered trademark, we control over storage, handling, and conditions of use, which are of the utmost importance. Velsicol[®] Chemical Corporation makes no representation or warranty, either express or implied, for results or residues greater than any tolerance which may be established by appropriate governmental agencies, due to misuse or improper handling or storage of this material. Nor does Velsicol[®] Chemical Corporation assume any responsibility for injury to persons, crops, animals, soil or property arising out of this use, improper handling or storage of this material.

VELSICOL[®]

Banvel-520

OIL SOLUBLE INDUSTRIAL HERBICIDE FOR BRUSH AND BROADLEAF WEED CONTROL

Contains 1 Pound Dicamba and 2 Pounds 2,4-D Per Gallon

ACTIVE INGREDIENTS

Dicamba (3,6-dichloro-p-aminic acid)	11.50%
Related acids	1.60%
Isooctyl ester of 2,4-dichlorophenoxyacetic acid	34.80%
Xylene	25.75%
INERT INGREDIENTS	26.35%
TOTAL	100.00%

Equivalent to 23.21% 2,4-dichlorophenoxyacetic acid

E.P.A. Reg. No. 46168 AA

NET CONTENTS: 5 GALLONS

CAUTION

KEEP OUT OF REACH OF CHILDREN

See Side Panel for Additional Cautions

VELSICOL CHEMICAL CORP.

341 E. OHIO STREET CHICAGO, ILLINOIS 60611

BANVEL[®]-520 Herbicide
diesel oil or fuel oil

USE BANVEL[®]-520
railroad, highway and
control and brush control
crop areas.

BANVEL[®]-520 Herbicide
alder, apple, ash, birch,
elm, fir, grape, hemlock,
sassafras, spruce, sugar

DORMANT STEM

Treat any time brush is
frozen or has dropped off. If
brush or tree to be cut off, do
not special emphasis on

GROUND APPLICATION

Hydraulic Spray Applicator
BANVEL[®]-520 Herbicide at
1 gallon of spray mixture
per 100 square feet of area

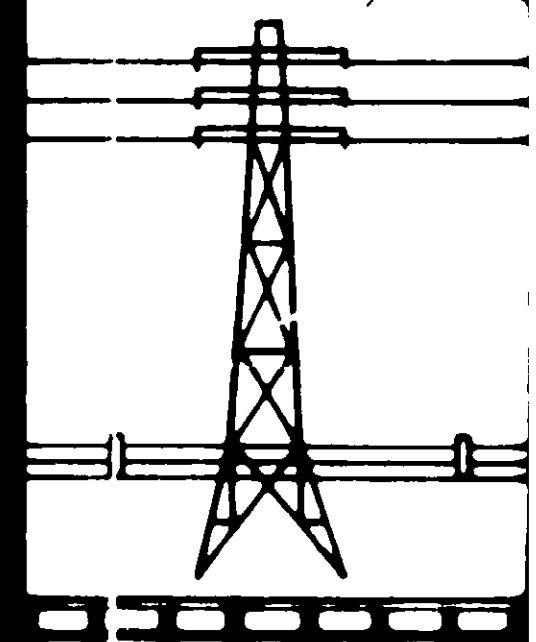
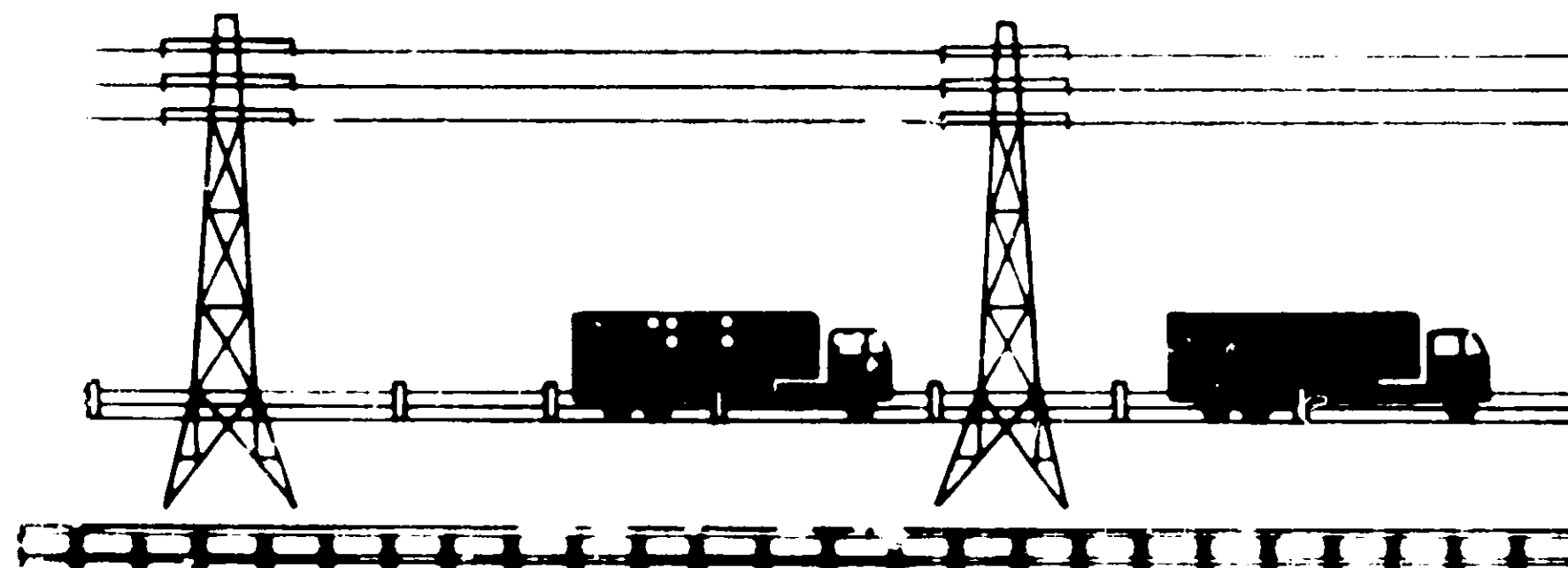
Back Pack Mist Blower /
200 sq. ft. of BANVEL[®]-520
Herbicide at 100 sq. ft. of
area. 100 gallons of spray
mixture per 100 sq. ft. of
area.

AERIAL APPLICATION - We

recommend a minimum
of 100 gallons of spray
mixture per acre. For
further information, contact
Velsicol[®] Chemical Corporation,
341 E. Ohio Street, Chicago,
Illinois 60611.

Apr 26, 1977

476-10



VELSICOL

Banvel-520

**OIL SOLUBLE INDUSTRIAL HERBICIDE
FOR BRUSH AND BROADLEAF WEED CONTROL**

Contains 1 Pound Dicamba and 2 Pounds 2,4-D Per Gallon

ACTIVE INGREDIENTS

Dicamba (3,6-dichloro-p-aminic acid)	11.50%
Related acids	1.60%
Isooctyl ester of 2,4-dichlorophenoxyacetic acid	34.80%
Xylene	25.75%

INERT INGREDIENTS

	26.35%
TOTAL	100.00%

Equivalent to 23.21% 2,4-dichlorophenoxyacetic acid

EPA Reg. No. 476-168 AA

NET CONTENTS: 5 GALLONS

CAUTION

KEEP OUT OF REACH OF CHILDREN

See Side Panel for Additional Cautions

VELSICOL CHEMICAL CORP.

341 E. OHIO STREET CHICAGO, ILLINOIS 60611

BANVEL®-520 Herbicide is soluble in oil, not water, and is to be used with diesel oil or fuel oil only. **DO NOT USE WITH WATER**

USE BANVEL®-520 Herbicide to control unwanted woody plants along utility, railroad, highway and pipeline rights-of-way for non-selective forest brush control and brush control in wasteland, drainage ditch banks and similar non-crop areas.

BANVEL®-520 Herbicide controls both hardwood and evergreen species such as alder, apple, ash, beech, birch, cascara, cedar, cherry, dogwood, elderberry, elm, fir, grape, hemlock, hickory, hornbeam, locust, maple, oak, pine, poplar, sassafras, spruce, sumac, willow, and similar woody species.

DIRECTIONS FOR USE

DORMANT STEM BROADCAST	BASAL BARK TREATMENT
<p>Treat any time brush is dormant and most of the foliage has dropped off. Thoroughly wet the entire brush or tree to runoff. For root-suckering species, put special emphasis on covering the root crown.</p> <p>GROUND APPLICATION</p> <p>Hydraulic Spray Application: Mix 1 gallon of BANVEL® 520 Herbicide in sufficient quantity to make 100 gallons of spray mixture. Apply at the rate of 100 gallons of spray mixture per acre of brush.</p> <p>Back Pack Mist Blower Application: Mix 1 gallon of BANVEL® 520 Herbicide in sufficient quantity to make 100 gallons of spray mixture. Apply at the rate of 30 gallons of spray mixture per acre of brush.</p> <p>AERIAL APPLICATION: Western Oregon and Washington Only: To kill mix 1 gallon of BANVEL® 520 Herbicide with 4 additional pounds of diesel oil or kerosene or 4 lbs. of polyester in sufficient quantity to make 100 gallons of spray mixture. Apply at the rate of 100 gallons of spray mixture per acre of brush.</p>	<p>Spray the basal parts of the brush and tree trunk from the ground up to a height of 10 to 20 feet. Spray until runoff with special emphasis on covering the root crown. Thorough wetting of the indicated area is needed to achieve good control. Treatment may be made at any time during the year including winter, except when snow or water prevents spray from reaching the ground line.</p> <p>Hydraulic Spray Application: Mix 1 gallon of BANVEL® 520 Herbicide in sufficient quantity to make 100 gallons of spray mixture. Apply at the rate of 100 gallons of spray mixture per acre of brush.</p> <p>Back Pack Mist Blower Application: Mix 1 gallon of BANVEL® 520 Herbicide in sufficient quantity to make 100 gallons of spray mixture. Apply at the rate of 30 gallons of spray mixture per acre of brush.</p>

Apr 26, 1972

476-168

