

869-245

06/08/2009

1/8



UNITED STATES ENVIRONMENTAL PROTECTION AGENCY
WASHINGTON, D.C. 20460

OFFICE OF
PREVENTION, PESTICIDES
AND TOXIC SUBSTANCES

June 8, 2009

Ms. Leslie Garcia
Agent for Green Light Company
c/o Valent USA Corporation
1600 Riviera Ave, P.O. Box 8025
Walnut Creek, CA 94596-8025

Subject: Green Light Lawn & Garden Spray with Spinosad EPA Reg. No. 869-245
Date of Registrant Submission: 2/19/09
Decision: 407476

Dear Ms. Garcia:

The labeling referred to above, submitted in connection with registration under the Federal insecticide, Fungicide, and Rodenticide Act, as amended, is acceptable.

If you wish to retain a reference to the company's website on your label, please be aware that the website becomes labeling under the Federal Insecticide Fungicide and Rodenticide Act and is subject to review by the Agency. If the website is false or misleading, the product would be misbranded and unlawful to sell or distribute under FIFRA section 12(a)(1)(E). 40 CFR 156.10(a)(5) lists examples of statements EPA may consider false or misleading. In addition, regardless of whether a website is referenced on your product's label, claims made on the website may not substantially differ from those claims approved through the registration process. Therefore, should the Agency find or if it is brought to our attention that a website contains false or misleading statements or claims substantially differing from the EPA approved registration, the website will be referred to the EPA's Office of Enforcement and Compliance Assurance. As an alternative, you may refer consumers to the company's phone number or email address.

Two (2) copies of the finished labeling must be submitted prior to releasing the product for shipment. A stamped copy of the label is enclosed for your records.

If you have any questions regarding this letter, please contact Samantha Hulkower at (703) 603-0683.

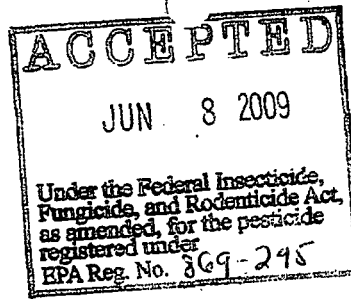
Sincerely,

A handwritten signature in black ink, appearing to read "Kimberly Nesci".

Kimberly Nesci
Product Manager 11
Insecticide Branch
Registration Division (7505P)

Enclosures: Copy of Label Stamped "Accepted"

2/8



{Optional text}

Green Light[®] Lawn & Garden Spray with Spinosad[®]

MAKES UP TO 8 GALLONS

FOR RESIDENTIAL USE IN VEGETABLE GARDENS, ON FRUIT AND CITRUS TREES, ON LAWNS, AND ORNAMENTALS.

FOR CONTROL OF ANTS, FIRE ANTS, JAPANESE BEETLES, LEAFMINERS, LEAFROLLERS, SPIDER MITES, THRIPS, AND WORMS.

FOR SUPPRESSION OF FRUIT FLIES AND FLEAS.

ONE PINT WILL TREAT OVER 2,500 SQ. FT. OF LAWN AND/OR VEGETABLE GARDEN AREA.

ONE DILUTION RATE FOR ALL USES – 2 FL. OZ. (4 TBSP) IN ONE GALLON OF WATER.

{VITAL} COMPONENT OF TWO-STEP FIRE ANT CONTROL TREATMENT PROGRAM.

ACTIVE INGREDIENT:

Spinosad (a mixture of spinosyn A and spinosyn D)	0.25%
OTHER INGREDIENTS	99.75%
Total	100.00%

Contains 0.04 lbs. of active ingredient per gallon.

KEEP OUT OF REACH OF CHILDREN

CAUTION

EPA Reg. No. 869-245
EPA Est. No.

See side or back panel {or booklet} for additional precautionary statements.

[OMRI LOGO]

Listed by the Organic Materials Review Institute (OMRI) for use in organic production.

Manufactured for Green Light Company, P.O. Box 17985, San Antonio, TX 78217-0985
www.greenlightco.com (210) 494-3481

3/8

Manufactured for Green Light Company, P.O. Box 17985, San Antonio, TX 78217-0985
www.greenlightco.com (210) 494-3481

NET CONTENTS

(Back or Side Panel)

**Open Resealable Label for
Directions & Precautions**

**{PEEL HERE}
{PRESS TO RESEAL}**

PRECAUTIONARY STATEMENTS

Environmental Hazards

This product is toxic to bees exposed to treatment for 3 hours following treatment. Do not apply this product to blooming, pollen-shedding, or nectar-producing parts of plants if bees may forage on the plants during this time period. This product is toxic to aquatic invertebrates. Do not apply directly to water.

To protect the environment, do not allow pesticide to enter or run off into storm drains, drainage ditches, gutters or surface waters. Applying this product in calm weather when rain is not predicted for the next 24 hours will help to ensure that wind or rain does not blow or wash pesticide off the treatment area. Rinsing application equipment over the treated area will help avoid run off to water bodies or drainage systems.

Physical or Chemical Hazards

Combustible. Do not use near heat or open flame.

PRODUCT INFORMATION
<p>HOW IT WORKS Green Light Lawn & Garden Spray is a fermentation-derived insect control product intended for control of worms (caterpillars) and other insect pests. Green Light Lawn & Garden Spray does not significantly impact beneficial insects while controlling target pests by ingestion and contact activity. Susceptible insect pests may be observed on plants up to several hours after treatment, but will have ceased active feeding before being killed. Allow treated areas to dry before entering. Do not allow children and pets to enter treated areas until dry.</p>
<p>PESTS CONTROLLED Controls Beetles, Leafminers, Spider Mites, Thrips, Worms, and other listed insect pests and for suppression of fruit flies and fleas.</p>
<p>WHERE TO USE For Use in Vegetable Gardens, Fruit Trees, Lawns, and Ornamentals.</p>
<p>WHEN TO USE Time applications to early morning/late evening to minimize the potential for leaf burn.</p>

<p>AMOUNT OF AREA TREATED In vegetable gardens, use no more than 3 gallons of spray for each 1,000 sq. ft. area.</p>
<p>HOW TO USE</p> <ul style="list-style-type: none"> • SHAKE WELL BEFORE USING. • May be applied with a trigger sprayer, hand-held, backpack, or hose-end sprayer. • Use a hose-end sprayer that can be adjusted to provide a dilution rate of 2 fl oz (4 tbsp) per 1 gallon of spray. • Add the required amount of product to the recommended amount of water, mix thoroughly and apply uniformly to plant foliage to the point of runoff. • Mix only as much spray as needed for a single treatment. • Do not store spray solution.
<p>WHEN TO APPLY Make applications when listed insect pests are present. Repeat applications may be made as indicated in the Home Garden Treatment section.</p>
<p>For Questions, Comments or Medical Information Call: (800) 89-VALENT (898-2536)</p>

DIRECTIONS FOR USE: It is a violation of Federal law to use this product in a manner inconsistent with its labeling. Read all Directions For Use carefully before applying. For residential use in home gardens, lawns and ornamentals. Not for use on plants being grown for sale or other commercial use, or for commercial seed production, or for research purposes.

STORAGE AND DISPOSAL

Pesticide Storage: Store in original container in a cool dry place, out of reach of children, preferably a locked storage cabinet. Avoid contamination of feed and foodstuffs. Avoid contamination of feed and foodstuffs.

Disposal: Nonrefillable container. Do not reuse or refill this container. If empty, place in trash or offer for recycling.

If Partly Filled: Call your local solid waste agency for disposal instructions. Never place unused product down any indoor or outdoor drain.

HOME GARDEN TREATMENT

Apple and Other Pome Fruits including, but not limited to: pears, crabapples, mayhaw, and quince. **Pests Controlled:** Codling moth, leafminers, Oriental fruit moth, and tufted apple budmoth. **Max. No. of Applications per Season:** 5. **Max. Days to Wait Before Reapplying:** 10. **Min. Days to Wait to Harvest:** 7.

Asparagus (post-harvest to protect ferns). **Pests Controlled:** Asparagus beetles. **Max. No. of Applications per Season:** 4. **Max. Days to Wait Before Reapplying:** 7. **Min. Days to Wait to Harvest:** 60.

Bushberries and Caneberries including, but not limited to: blueberry, blackberry, raspberry, loganberry, and gooseberry. **Pests Controlled:** Armyworms, fireworms, fruitworms, leafrollers, loopers, thrips, and fruitfly (suppression). **Max. No. of Applications per Season:** 6. **Max. Days to Wait Before Reapplying:** 6. **Min. Days to Wait to Harvest:** 3.

Citrus Trees including, but not limited to: oranges, grapefruit, lemons, limes, and tangerines (to prevent fruit scarring from thrips, treat when fruit is marble size). **Pests Controlled:**

- Leafminers, katydids, thrips, and worms (caterpillars). **Max. No. of Applications per Season: 6. Max. Days to Wait Before Reapplying: 6. Min. Days to Wait to Harvest: 1.**
- Cole Crops (Brassica Vegetables)** including, but not limited to: broccoli, Brussels sprouts, cabbage, cauliflower, cavalo, collards, kale, kohlrabi, and mustard greens. **Pests Controlled:** Cabbage looper, diamondback moth, imported cabbageworm, leafminers, and worms (caterpillars). **Max. No. of Applications per Season: 6. Max. Days to Wait Before Reapplying: 4. Min. Days to Wait to Harvest: 1.**
- Cucurbits** including, but not limited to: cucumber, summer and winter squash, cantaloupe, pumpkin, and watermelon. **Pests Controlled:** Leafminers, thrips, and worms (caterpillars). **Max. No. of Applications per Season: 6. Max. Days to Wait Before Reapplying: 5. Min. Days to Wait to Harvest: 3 (cucumber – 1).**
- Fruiting Vegetables** including, but not limited to: eggplant, okra, pepper, and tomato. **Pests Controlled:** Colorado potato beetle, leafminers, thrips, and worms (caterpillars). **Max. No. of Applications per Season: 6. Max. Days to Wait Before Reapplying: 4. Min. Days to Wait to Harvest: 1.**
- Grape.** **Pests Controlled:** Leafrollers, thrips, and worms (berry moth). **Max. No. of Applications per Season: 6. Max. Days to Wait Before Reapplying: 5. Min. Days to Wait to Harvest: 7.**
- Leafy and Dried Herbs.** **Pests Controlled:** Leafminers, thrips, and worms (caterpillars). **Max. No. of Applications per Season: 5. Max. Days to Wait Before Reapplying: 7. Min. Days to Wait to Harvest: 1.**
- Leafy Vegetables** including, but not limited to: lettuce, celery, parsley, and spinach. **Pests Controlled:** Leafminers and worms (caterpillars) **Max. No. of Applications per Season: 6. Max. Days to Wait Before Reapplying: 4. Min. Days to Wait to Harvest: 1.**
- Stone Fruits** including, but not limited to: peaches, plums, cherries, nectarines, prunes, and apricots. **Pests Controlled:** Borers, fruit flies (suppression), leafminers, leafrollers, Japanese beetles, worms (caterpillars). **Max. No. of Applications per Season: 6. Max. Days to Wait Before Reapplying: 7. Min. Days to Wait to Harvest: Peach, nectarine, apricot, and all except cherry, plum and prune – 14; Cherry, plum and prune – 7.**
- Strawberry.** **Pests Controlled:** Armyworms, leafrollers, and thrips. **Max. No. of Applications per Season: 6. Max. Days to Wait Before Reapplying: 5. Min. Days to Wait to Harvest: 1.**
- Succulent Beans and Peas** including, but not limited to: lima bean, snap bean, blackeyed pea, garden pea, and garbanzo bean. **Pests Controlled:** Borers, leafminers, thrips, and worms (caterpillars). **Max. No. of Applications per Season: 6. Max. Days to Wait Before Reapplying: 5. Min. Days to Wait to Harvest: 3.**
- Tree Nuts** including, but not limited to: pecans, almonds, cashew, chestnut, macadamia, pistachio, and walnuts. **Pests Controlled:** Leafrollers, navel orangeworms, peach twig borer, shuckworms, webworms, and husk fly (suppression). **Max. No. of Applications per Season: 5. Max. Days to Wait Before Reapplying: 7. Min. Days to Wait to Harvest: 14.**
- Tropical Tree Fruits** including, but not limited to: avocado, guava, mango, and papaya. **Pests Controlled:** Suppression of worms or caterpillars, thrips, and katydids. **Max. No. of Applications per Season: 4. Max. Days to Wait Before Reapplying: 7. Min. Days to Wait to Harvest: 1.**
- Tuberous and Corm Vegetables** including, but not limited to: potatoes, yams, artichokes, cassava, and ginger. **Pests Controlled:** Colorado potato beetle, corn borers, leafminers, thrips, and worms (caterpillars). **Max. No. of Applications per Season: 6. Max. Days to Wait Before Reapplying: 7. Min. Days to Wait to Harvest: 7.**

All Crops Listed in This Table. Pests Controlled: Fire Ants. **Max. No. of Applications per Season, Max. Days to Wait Before Reapplying, and Min. Days to Wait to Harvest:** See application directions in following table.

LAWN AND ORNAMENTAL TREATMENT

Use Site: Lawns. Pests Controlled: Worms, including small (<3/4") armyworm and sod webworm, cat fleas (suppression only). **Comments:** Mix the amount of product recommended per gallon of spray and uniformly apply a minimum of 3 gallons of spray per 1,000 sq. ft. Delay watering or mowing for 12-24 hours after application. **Armyworms:** For best results, apply in early morning or late afternoon. **Cat fleas:** Apply early or late in the day since control requires contact with dilute spray before drying. Thorough coverage is necessary. Reapply in 7-14 days to control adults that have emerged from pupae present at time of initial treatment.

Use Site: Outdoor Ornamentals (Herbaceous and Woody Plants). Pests Controlled: Gall midges, leaf feeding beetles (including Japanese beetle), mosquitoes, leafminers, sawfly larvae, spider mites*, thrips, worms (caterpillars). **Comments:** Mix the amount of product recommended per gallon of spray and uniformly spray foliage to point of runoff. Uniform coverage of upper and lower leaf surfaces is essential for effective control.

*Apply when spider mites are first observed prior to webbing and before mite populations have become severe. Reapply after 7-10 days to contact newly hatched nymphs and repeat until infestation is managed. Uniform coverage of both upper and lower leaf surfaces is critical.

Use Site: Lawns, Ornamentals, Home Gardens (See Listed Crops in Previous Table), and Other Outdoor Areas. Pests Controlled: Fire Ants. **Comments:** Mix the amount of product recommended per gallon and use a sprinkler can to apply as a mound drench, using 1 gallon of solution directly to the mound. Do not disturb mound prior to application. If possible, apply following recent rainfall. For best results, apply when weather is cool, 65°F to 85°F, or in early morning or late evening.

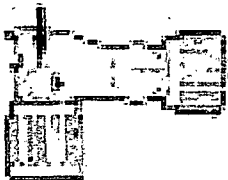
TWO-STEP FIRE ANT TREATMENT PROGRAM

Step 1: Apply 4 tablespoons of Green Light Fire Ant Control with Conserve® (0.015% Spinosad) directly to an active fire ant mound. Sprinkle the bait evenly over and around each mound in a 4 ft. diameter circle. Do not water in. Can be applied in vegetable gardens. A one pound container will treat up to 22 fire ant mounds. Fire ants quickly pick up the bait, take it back into the mound, and feed it to the entire ant colony including the queen(s). Ants start dying in 24-36 hours with colony destruction in 3-14 days.

Step 2: Broadcast spray 3 gallons of spray solution (6 fl. oz. of product) of Green Light Lawn & Garden Spray per 1,000 sq. ft. around the active fire ant mounds in landscape/lawn/vegetable garden areas. Do not directly spray mounds previously treated with Green Light Fire Ant Control with Conserve®, as adequate foraging by the ants will not occur if bait is wet. Do not water treated areas within 24 hours of application. The best time to make an application is in the cooler morning or late evening when fire ant foraging is at its peak. Combining mound and broadcast applications eliminates/controls visible mounds and helps prevent new mounds from forming.

READY-TO-SPRAY DIRECTIONS FOR OUTDOOR USE ONLY

The sprayer attached to the container is ready-to-use. Simply attach to the garden hose and follow these simple instructions:



1. Insure the large, round "on/off" knob is set to OFF.
2. Turn on water.
3. Rotate the small, star-shaped product control knob to align the flat portion of the knob with the vertical portion of the lock tab and PUSH IN the knob to open. This allows product to mix with water.
4. Hold sprayer and container level and point towards area to be sprayed.
5. Turn large, round "on/off" knob forward (away from you) to ON.
6. Begin spraying product evenly over area you wish to treat.
7. To stop spraying, turn large, round "on/of" knob backward (toward you) to OFF.
8. PULL OUT and rotate the small, star-shaped product control knob. This prevents product from mixing with water.
9. Turn off water at the faucet. Relieve water pressure in the hose by turning large, round "on/off" knob to ON until water pressure is reduced.
10. Turn the knob to OFF for storage or unused product and/or disposal of empty container.

**DISCLAIMER, RISKS OF USING THIS PRODUCT
LIMITED WARRANTY
AND LIMITATION OF LIABILITY**

IMPORTANT: Read the entire Label including this Disclaimer, Risks of Using this Product, Limited Warranty and Limitation of Liability before using this product. If the terms are not acceptable THEN DO NOT USE THE PRODUCT. Rather, return the unopened product within 15 days of purchase for a refund of the purchase price.

RISKS OF USING THIS PRODUCT

The Buyer and User (referred to collectively herein as "Buyer") of this product should be aware that there are inherent unintended risks associated with the use of this product which are impossible to eliminate. These risks include, but are not limited to, injury to plants to which this product is applied, lack of control of the target pests or weeds, resistance of the target pest or weeds to this product, and injury caused by drift. Such risks of non-performance, resistance or other unintended consequences are unavoidable and may result because of such factors as weather, soil conditions, disease, moisture conditions, irrigation practices, presence of other materials either applied in the tank mix with this product or prior to application of this product, cultural practices or the manner of use or application, (or a combination of such factors) all of which are factors beyond the control of Valent. If the Buyer chooses not to accept these risks, THEN THIS PRODUCT SHOULD NOT BE APPLIED. By applying this product Buyer acknowledges and accepts these inherent unintended risks AND TO THE FULLEST EXTENT ALLOWED BY LAW, AGREES THAT ALL SUCH RISKS ASSOCIATED WITH THE APPLICATION AND USE ARE ASSUMED BY THE BUYER.

Valent shall not be responsible for losses or damages resulting from use of this product in any manner not set forth on the label. Buyer assumes all risks associated with the use of this product in any manner or under conditions not specifically directed or approved on the label.

LIMITED WARRANTY

Valent warrants only that this product conforms to the chemical description on the label and is reasonably fit for the purposes stated in the label, under average use conditions, when used strictly in accordance with the label and subject to the Risks of Using This Product as described above. To the extent consistent with applicable law AND AS SET FORTH ABOVE, VALENT MAKES NO OTHER WARRANTIES, EITHER EXPRESSED OR IMPLIED. No agent or representative of Valent or Seller is authorized to make or create any other express or implied warranty.

LIMITATION OF LIABILITY

To the fullest extent allowed by law, Valent or Seller is not liable for any incidental, consequential, indirect or special damages resulting from the use or handling of this product. The limitation includes, but is not limited to, increased care, increased finance charges or altered finance ratings, emotional or mental distress and/or exemplary damages. TO THE FULLEST EXTENT ALLOWED BY LAW, THE EXCLUSIVE REMEDY OF THE BUYER, AND THE EXCLUSIVE MAXIMUM LIABILITY OF VALENT OR SELLER FOR ANY AND ALL CLAIMS, LOSSES, INJURIES OR DAMAGES (INCLUDING CLAIMS BASED ON BREACH OF WARRANTY, CONTRACT, NEGLIGENCE, TORT, STRICT LIABILITY OR OTHERWISE) RESULTING FROM THE USE OR HANDLING OF THIS PRODUCT SHALL BE THE RETURN OF THE PURCHASE PRICE OF THIS PRODUCT OR, AT THE ELECTION OF VALENT OR SELLER, THE REPLACEMENT OF THE PRODUCT.

PROMPT NOTICE OF CLAIM

Valent must be provided notice as soon as Buyer has reason to believe it may have a claim, but in no event later than twenty-one days from the date of application, so that an immediate inspection of the affected property can be made.

If Buyer does not notify Valent of any claims in such period, it shall be barred from obtaining any remedy.

NO AMENDMENTS

Valent and Seller offer this product, and Buyer accepts it, subject to the foregoing Disclaimer, Risks of Using This Product, Limited Warranty and Limitation of Liability.

Green Light is a registered trademark of Valent GL Corporation
U.S. Patent No. 5,362,634 and 5,496,931
Spinosad is a registered trademark of Dow AgroSciences LLC