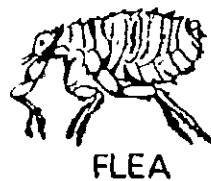


# GREEN LIGHT ROTENONE

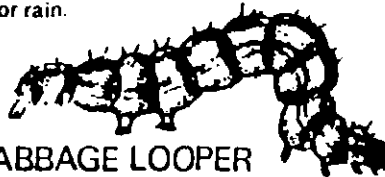
For the control of sucking & chewing insects.



For the control of sucking and chewing insects. Kills insects by contact or when eaten and retains effective killing strength for a short period of time unless removed by wind or rain.



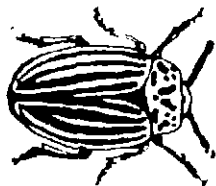
FLEA



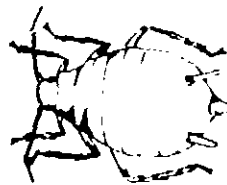
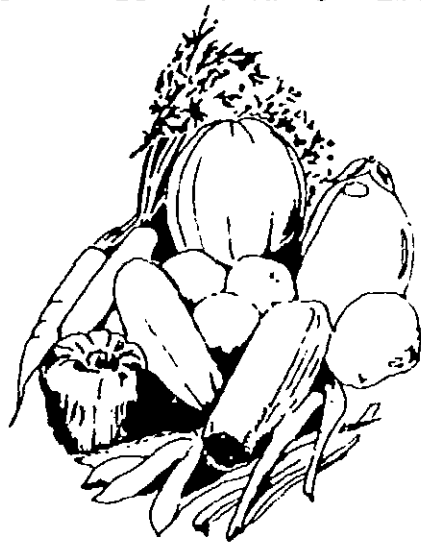
CABBAGE LOOPER

ACTIVE INGREDIENTS:	
Rotenone .....	0.75%
Cube Root Extractive .....	1.50%
INERT INGREDIENTS: .....	97.75%
Total	100.00%

**KEEP OUT OF REACH OF CHILDREN**  
**CAUTION**  
SEE BACK PANEL FOR  
ADDITIONAL PRECAUTIONARY STATEMENTS



POTATOE BEETLE



APHID

MANUFACTURED by GREEN LIGHT COMPANY  
SAN ANTONIO, TEXAS 78217

EPA Reg No 869-146

Net Contents 1 lb.

EPA Est No 869-TX-1

## PRECAUTIONARY STATEMENTS HAZARDS TO HUMANS AND DOMESTIC ANIMALS

### CAUTION

#### STATEMENT OF PRACTICAL TREATMENT

IF SWALLOWED: Call a physician immediately.  
IF INHALED: Remove victim to fresh air.  
IF ON SKIN: Wash with soap and water.  
IF IN EYES: Rinse with plenty of water. Call a physician.

Harmful if swallowed. Do not breathe dust. Do not get in eyes or on skin. Wash thoroughly after handling. Avoid contamination of food and feed. Do not use on humans.

#### ENVIRONMENTAL HAZARDS

This product is toxic to fish. Keep out of lakes, streams and ponds. Do not contaminate water by cleaning of equipment or disposal of wastes. Apply this product only as specified on this label.

#### DIRECTIONS FOR USE

It is a violation of Federal Law to use this product in a manner inconsistent with its labeling.

#### STORAGE AND DISPOSAL

Do not contaminate water, food or feed by storage or disposal.  
PESTICIDE DISPOSAL: Pesticide spray mixture or rinse water that cannot be used according to label instruction must be disposed of according to Federal, State or local procedures.  
CONTAINER DISPOSAL: Do not reuse empty container. Wrap and put in trash collection.

#### Use on Fruits and Vegetables

Application is most effective if made before any serious insect damage occurs to plants. Apply this product when infestation first appears. Reapply as necessary usually at 7 to 10 day intervals. For control of Mexican Bean Beetles it is important that the underside of leaves be covered with this product. Apply at a rate of 1/2 to 2/3 lb. per 1000 square ft. Do not apply within one day of harvest.

Apples, Peaches, Japanese Beetle  
Asparagus, Asparagus Beetle, Japanese Beetle  
Beans (Snap & Lima), Orchids, Bean Leaf Beetle, Cucumber Beetle, Flea Beetle, Mexican Bean Beetle  
Blackberries, Blueberries, Dewberries, Grapes, Raspberries, Japanese Beetle, Raspberry Fruit Fly, Raspberry Fruit Worm, Sawfly. For Raspberry Cane Borer apply to foliage just before plants bloom and repeat in 7-10 day intervals.  
Beets, Flea Beetles  
Broccoli, Brussels Sprouts, Cabbage, Cauliflower, Collards, Cabbage Looper, Diamond Back Moth, Larvae, Flea Beetle, Imported Cabbage Worm  
Cantalope, Cucumbers, Squash, Watermelon, Cucumber Beetle, Melon Worm, Plant Lice  
Currants, Gooseberries, Gooseberry Fruit Worm  
Eggplant, Aphid, Colorado Potato Beetle, Flea Beetle  
Lettuce, Looper  
Peas, Pea Aphid, Pea Weevil  
Potatoes, Aphids, Blister Beetle, Colorado Potato Beetle, Flea Beetle  
Radishes, Flea Beetle  
Spinach, Flea Beetle, Spinach Aphid, Spinach Lice  
Tomato, Aphid, Colorado Potato Beetle, Flea Beetle, Tomato Hornworm, Tomato Suck Fly  
Strawberries, Flea Beetle, Leaf Beetle, Spittlebug  
Turnips, Flea Beetle

Use on Animals and in Animal Quarters: Fleas on Dogs & Cats: Dust animal thoroughly and rub into fur. Repeat weekly as required for control. Do not allow product to get into eyes, nose or ears of animals.

Fleas in Kennels, Pens, Yards, Lawns and Under Houses: Apply 5-10 ounces per 250 sq. ft. with hand duster. Remove debris before dusting.

Lice on Horses: Apply one to four ounces of powder depending on the size of the animal from a shaker type can. Work into hair. Repeat in 10 to 12 days and as needed thereafter.

Use on Ornamental Plants: Apply thoroughly as needed.  
Aphids: Aster, Gladiolus, Iris, Roses, Sunflower, Sweet Peas  
Cabbage Looper and Imported Cabbage Worm: Carnation, Chrysanthemum, Cosmos, Dahia, Daisy, Rose, Sweet Pea, Zinnia  
Flea Beetle: Petunia, Pentstemon, Sunflower, Spice Violet, Wallflower  
Japanese Beetle: Roses