

GREEN LIGHT ANT KILLER



BROWN DOG TICKS CRICKETS
FLEAS SILVERFISH PILL BUGS

ANTS, COCKROACHES (including both non-resistant and organophosphate and organochlorine resistant strains), **CRICKETS, SILVERFISH:** Apply thoroughly to all areas where these pests crawl and hide, especially in cracks and crevices and hidden surfaces around sinks and storage areas, behind baseboards, around doors and windows, behind and under refrigerators, cabinets, sinks and stoves and in attics and crawl spaces. For ants, apply to ant trails, around doors and windows and other places where ants enter premises.

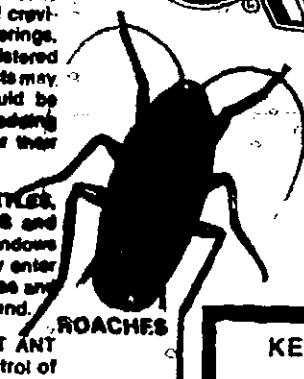
BROWN DOG TICKS and FLEAS in Buildings: Apply dust to infested areas such as pet beds and resting quarters, nearby cracks and crevices, under the edges of rugs and floor coverings, between and under cushions of upholstered furniture and other areas where these pests may be present. Old bedding of pets should be removed and replaced with fresh, clean bedding after treatment. Do not treat animals or their bedding with this product.

SOBWAHS, MILLIPEDES, GROUND BEETLES, EARWIGS, CENTIPEDES and SCORPIONS: Apply around doors and windows and other places where these pests may enter premises. Treat baseboards, storage areas and other locations where these pests are found.

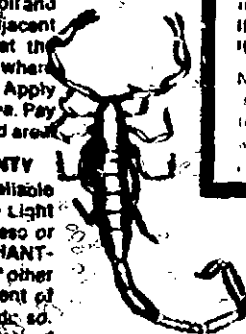
OUTDOOR USE — Use GREEN LIGHT ANT KILLER as a residual treatment for control of ants and cockroaches. Make a residual treatment around windows and doors, porches, screens, eaves, patios, garages, under stairways and in crawl spaces and other areas where pests hide.

To help prevent invasion of building and structures by the above pests, treat a band of soil and vegetation 6 to 10 feet wide ground and adjacent to the building or structure. Also treat the building foundation and crawl spaces where pests are active and may find entrance. Apply thoroughly and uniformly to the band area. Pay particular attention to ant hills in the band area.

CONDITIONS OF SALE AND WARRANTY
The Directions for Use are believed to be reliable and should be followed carefully. Green Light Company and the Seller make no express or implied warranty of FITNESS or MERCHANTABILITY concerning the use of this product other than indicated on the label, and no agent of Green Light Company is authorized to do so. Green Light Company and the Seller and the Buyer agree, that the Buyer assumes all risks of use, storage or handling of this material when such use, storage or handling is contrary to label instructions. Green Light Company and the Seller shall not be held responsible for personal injury, property damage or other damage, of other loss (excluding that from handling, storage or use of this material contrary to the label instructions).



ROACHES



SCORPIONS

ACTIVE INGREDIENT
Bendiocarb 2, 2-dimethyl-1, 3-benzodioxol-4-yl methylcarbamate 1.00%

INERT INGREDIENTS 99.00%

TOTAL 100.00%

*Patented by U.S. Patent No. 3,736,338

**KEEP OUT OF REACH OF CHILDREN
CAUTION**

If Swallowed: Drink one or two glasses of water and induce vomiting by touching back of throat with finger or bulb syringe. Do not induce vomiting or give anything by mouth to a conscious person. Get medical attention.

If Inhaled: Keep patient strictly at rest and transfer to hospital immediately to get medical attention.

If On Skin: Wash with soap and warm water.

If In Eyes: Flush thoroughly with clean water.

NOTE TO PHYSICIAN: Contains anticholinergic ester carbamate insecticide. In cases of overexposure, atropine sulfate 2 mg intravenously may be used to counteract the anticholinergic effects.

PRECAUTIONARY STATEMENTS:
Hazards to Humans and Domestic Animals

CAUTION: Harmful if swallowed, inhaled or absorbed through the skin. Do not breathe dust. Do not allow to contact skin, eyes or clothing. If contact occurs, wash skin with soap and warm water, or eyes with clean water. Wash hands and exposed skin before eating, drinking or smoking and after handling. Wash all contaminated clothing thoroughly before reuse.

ENVIRONMENTAL HAZARDS: This product is highly toxic to bees exposed to direct treatment or to residues on plants. Do not apply directly to water. Keep out of lawn and garden fish ponds. Do not contaminate water by cleaning of equipment or disposal of wastes.

PRECAUTIONS: Do not use on or containments of fruit, vegetables or other food crops. Do not apply to humans, animals, clothing or bedding. Do not contaminate feed or food products or food preparation surfaces, dishes, kitchen utensils and food containers.

DIRECTIONS FOR USE: If in violation of Federal law to use this product in a manner inconsistent with its labeling.

STORAGE: Store in a locked storage area out of reach of children and domestic animals. Keep pesticide in original container. **PESTICIDE DISPOSAL:** Unwanted pesticide material leave in original container. Securely wrap original container in several layers of newspaper or a discard in trash. **CONTAINER DISPOSAL:** Do not reuse container. Discard can in trash.

IMPORTANT: Read the entire Directions for Use and Warranty Notice before using this product.

GREEN LIGHT ANT KILLER is for residual pest control in and on buildings and their immediate surroundings.

GREEN LIGHT ANT KILLER is intended for application with hand duster or by other suitable means to flying and runway areas and those places where pests are found. Apply lightly and uniformly to infested areas. The amount to be applied will vary with the site but should usually be in the range of 1/4 to 1/2 ounce of GREEN LIGHT ANT KILLER per square yard. Repeat treatments as necessary to maintain adequate control.



ANTS



EARWIG



CENTIPEDE

E.P.A. REG. NO. 869-176

E.P.A. EST. NO. 869-TX-1

DISTRIBUTED BY GREEN LIGHT COMPANY
SAN ANTONIO, TEXAS 78217

NET CONTENTS 1 POUND

