



OFFICE OF CHEMICAL SAFETY AND POLLUTION PREVENTION

WASHINGTON, D.C. 20460

January 23, 2026

Kasey Ray
Registrations
Southern Agricultural Insecticides, Inc.
P.O. Box 218
Palmetto, FL 34220

Subject: Label Amendment - Registration Review Mitigation for Permethrin
Product Name: SA-50 HOME PEST CONTROL SPRAY
EPA Registration Number: 829-295
Case Number: 479696
Application Date: 2/10/2021

Dear Kasey Ray:

The Agency, in accordance with the Federal Insecticide, Fungicide, and Rodenticide Act (FIFRA), as amended, has completed reviewing all the information submitted with your application to support the Registration Review of the above referenced product in connection with the Permethrin Interim Decision, and has concluded that your submission is acceptable. The label referred to above, submitted in connection with registration under FIFRA, as amended, is acceptable.

Should you wish to add/retain a reference to the company's website on your label, then please be aware that the website becomes labeling under the Federal Insecticide, Fungicide, and Rodenticide Act and is subject to review by the Agency. If the website is false or misleading, the product would be misbranded and unlawful to sell or distribute under FIFRA section 12(a)(1)(E). 40 CFR 156.10(a)(5) list examples of statements EPA may consider false or misleading. In addition, regardless of whether a website is referenced on your product's label, claims made on the website may not substantially differ from those claims approved through the registration process. Therefore, should the Agency find or if it is brought to our attention that a website contains false or misleading statements or claims substantially differing from the EPA approved registration, the website will be referred to the EPA's Office of Enforcement and Compliance Assurance.

A stamped copy of your labeling is enclosed for your records. This labeling supersedes all previously accepted labeling and must be used at your next label printing. You must submit one copy of the final printed labeling before you release the product for

shipment with the new labeling. In accordance with 40 CFR 152.130(c), you may distribute or sell this product under the previously approved labeling for 12 months from the date of this letter. After 12 months, you may only distribute or sell this product if it bears this new revised labeling or subsequently approved labeling. "To distribute or sell" is defined under FIFRA section 2(gg) and its implementing regulation at 40 CFR 152.3.

If you have any questions about this letter, please contact Alex McKee by phone at 202-566-1939, or via email at mckee.alex@epa.gov.

Sincerely,

A handwritten signature in blue ink that reads "Dana L. Friedman". The signature is fluid and cursive, with the first name "Dana" being more prominent.

Dana L. Friedman, Chief
Risk Management and Implementation Branch 1
Pesticide Re-Evaluation Division
Office of Pesticide Programs
U.S. Environmental Protection Agency

ENCLOSURE: Stamped label

MASTER LABEL

S A SOUTHERN
5 O AG®

HOME PEST CONTROL SPRAY

WITH
APPLICATOR

CONTAINS PERMETHRIN

**USE ON DOGS
AND LIVESTOCK**



FOR BOTH INDOOR AND OUTDOOR USE

CONTROLS COCKROACHES, FLEAS, & STORED PRODUCT PESTS

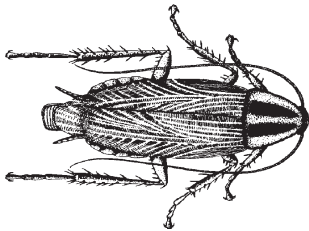
ACTIVE INGREDIENTS

Permethrin 0.25%
OTHER INGREDIENTS: 99.75%
TOTAL: 100.00%

KEEP OUT OF REACH
OF CHILDREN

CAUTION

See inside of label for complete precautions and
directions for use.
Follow Directions on side of label to open.



**READ ENTIRE LABEL BEFORE EACH USE
SHAKE WELL BEFORE USING**



Southern Agricultural Insecticides, Inc.

PALMETTO, FL 34220
EPA REG. NO. 829-295

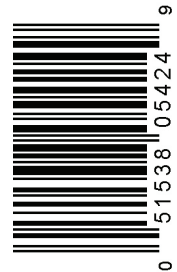
HENDERSONVILLE, NC 28793
J5

BOONE, NC 28607
EPA Est. No. 829-FL-1, 829-NC-2



Net Contents Liquid: 24 fl oz (0.710 liters), 1 Gallon (3.785 liters)

Southern Agricultural Insecticides, Inc.
P.O. Box 218 Palmetto, FL 34220



ACCEPTED

Jan 23, 2026

Under the Federal Insecticide, Fungicide
and Rodenticide Act as amended, for the
pesticide registered under
EPA Reg. No. 829-295

PRECAUTIONARY STATEMENTS

Hazards to Humans & Domestic Animals

CAUTION: Wash thoroughly after handling and before smoking or eating. Avoid contamination of feed and foodstuffs. Remove pets and birds and cover fish aquaria before surface applications. Do not use on humans. Do not allow children or pets to contact treated areas until surfaces are dry.

Environmental Hazards

This product is extremely toxic to aquatic organisms, including fish and invertebrates. To protect the environment, do not allow pesticide to enter or run off into storm drains, drainage ditches, gutters or surface waters. Applying this product in calm weather when rain is not predicted for the next 24 hours will help to ensure that wind or rain does not blow or wash pesticide off the treatment area.

This product is highly toxic to bees exposed to direct treatment on blooming crops or weeds. Do not apply this product or allow it to drift to blooming crops or weeds while bees are actively visiting the treatment area.

For emergencies concerning this pesticide product (including health concerns, medical emergencies, or pesticide incidents), call the National Pesticide Telecommunications Network at 1-800-858-7378.

Have product container or label with you when calling a poison control center or doctor or going for treatment.

STORAGE AND DISPOSAL

Nonrefillable container. Do not reuse or refill this container. Do not contaminate water, food or feed by storage and disposal.

STORAGE: Store pesticide in the original container in a locked storage.

CONTAINER DISPOSAL: **If empty:** Offer for recycling if available.

If partly filled: Call your local solid waste agency or 1-800-CLEANUP for disposal instructions. Never place unused product down any indoor or outdoor drain.

Do not pour or dispose down-the-drain or sewer.

Call your local solid waste Agency for local disposal options

IMPORTANT: READ BEFORE USE

By using this product, user or buyer accepts the following condition, disclaimer of warranties and limitations of liability.

CONDITIONS: the Directions for Use of this product are believed to be adequate and must be followed carefully. However, because of manner of use and other factors beyond Southern Agricultural Insecticide's control, it is impossible for Southern Agricultural Insecticide to eliminate all risks associated with the use of this product. To the extent consistent with applicable law, all such risks shall be assumed by the user or buyer.

DISCLAIMER OF WARRANTIES: TO THE EXTENT CONSISTENT WITH APPLICABLE LAW THERE ARE NO WARRANTIES, EXPRESS OR IMPLIED, OF MERCHANTABILITY OR OF FITNESS FOR A PARTICULAR PURPOSE OR OTHERWISE, WHICH EXTEND BEYOND THE STATEMENTS MADE ON THIS LABEL. No agent of Southern Agricultural Insecticides is authorized to make any warranties beyond those contained herein or to modify the warranties contained herein. Southern Agricultural Insecticides disclaims any liability whatsoever for incidental or consequential damages, including, but not limited to, liability arising out of breach of contract, express or implied warranty (including warranties of merchantability and fitness for a particular purpose), tort, negligence, strict liability or otherwise.

LIMITATIONS OF LIABILITY: TO THE EXTENT CONSISTENT WITH APPLICABLE LAW, THE EXCLUSIVE REMEDY OF THE USER OR BUYER FOR ANY AND ALL LOSSES, INJURIES OR DAMAGES RESULTING FROM THE USE OR HANDLING OF THIS PRODUCT, WHETHER IN CONTRACT, WARRANTY, TORT, NEGLIGENCE, STRICT LIABILITY OR OTHERWISE, SHALL NOT EXCEED THE PURCHASE PRICE PAID, OR AT SOUTHERN AGRICULTURAL INSECTICIDE'S ELECTION, THE REPLACEMENT OF PRODUCT.

RESTRICTION

For use as a surface spray: Do not allow adults, children, or pets to enter until sprays have dried. Do not allow adults, children, or pets to enter until vapors, mists, and aerosols have dispersed and the treated area has been thoroughly ventilated.

When used in dairy barns or facilities: Close milk bulk tank lids to prevent contamination from spray and from dead or falling insects. Remove or cover milking utensils before application. Wash teats of animals before milking.

For outdoor residential use: Do not water the treated area to the point of run-off. Do not make applications during rain. Not for use in outdoor residential misting system.

DIRECTIONS FOR USE

SHAKE WELL BEFORE USING

For both indoor and outdoor use

It is a violation of Federal law to use this product in a manner inconsistent with its labeling. Not for use on plants being grown for sale or other commercial use, or for commercial seed production or for research purposes.

Do not allow to enter indoor or outdoor drains. No permita la entrada a desagües internos o externos. Follow proper disposal procedures on this label. Siga las indicaciones del etiquetado para el desecho apropiado del producto.



All outdoor spray applications must be limited to spot or crack-and-crevice treatments only, except for the following permitted uses:

1. Application to pervious surfaces such as soil, lawn, turf, and other vegetation;
2. Perimeter band treatments of 7 feet wide or less from the base of a man-made structure to pervious

surfaces (e.g., soil, mulch, or lawn);

3. Applications to underside of eaves, soffits, doors, or windows permanently protected from rainfall by a covering, overhang, awning, or other structure;
4. Applications around potential exterior pest entry points into man-made structures such as doorways and windows, when limited to a band not to exceed one inch;
5. Applications to vertical surfaces (such as the side of a man-made structure) directly above impervious surfaces (e.g., driveways, sidewalks, etc.), up to 2 feet above ground level;
6. Applications to vertical surfaces directly above pervious surfaces, such as soil, lawn, turf, mulch or other vegetation) only if the pervious surface does not drain into ditches, storm drains, gutters, or surface waters.

For spot treatments: Spot treatments must not exceed two square feet in size
(for example, 2ft. by 1 ft or 4 ft. by 0.5 ft.).

- For soil or foliar applications, do not apply by ground within 25 feet of lakes, reservoirs, rivers, permanent streams, marshes or natural ponds, estuaries and commercial fish farm ponds.
- Do not apply the product into fish pools, ponds, streams, or lakes. Do not apply directly to sewers or storm drains, or to any area like a drain or gutter where drainage to sewers, storm drains, water bodies, or aquatic habitat can occur.
- Do not allow the product to enter any drain during or after application.
- Do not apply directly to impervious horizontal surfaces such as sidewalks, driveways, and patios except as a spot or crack-and-crevice treatment.
- Do not apply or irrigate to the point of runoff.
- Do not make applications during rain. Avoid making applications when rainfall is expected before the product has sufficient time to dry (minimum 4 hours).
- Rainfall within 24 hours after application may cause unintended runoff of pesticide application.
- Do not apply when the wind speed is greater than 15 mph.
- **Crack and crevice treatments:** Treat surfaces to ensure thorough coverage but avoid runoff. To treat insects harbored in voids and cracks-and-crevices, applications must be made in such a manner to limit dripping and avoid runoff onto untreated structural surfaces and plants.

INDOOR APPLICATION

HOUSEHOLD PESTS: Do not use as a space spray indoors. Ready to use. Affix applicator to container for application. Do not transfer to another container unless it is a proper pesticide applicator/sprayer.

SURFACE SPRAYING: For 60 day control of Cockroaches, Waterbugs, Palmetto Bugs, Scorpions, Millipedes, Centipedes, Sowbugs, Pillbugs, Ants, Silverfish, Firebrats, Spiders, Crickets, Clover mites, Cheese mites, Granary weevils, Rice Weevils, Confused Flour Beetles, Rust Red Flour Beetles, Drugstore Beetles, Meal Worms, Grain Mites and Cadelles: Direct the spray into hiding places, cracks and crevices, and behind shelves and drawers. For silverfish, spray bookcases. For Ants, spray trails, nests and points of entry. Allow all treated articles to dry thoroughly before use.

TO CONTROL CARPET BEETLES: Spray edges of carpeting and under carpeting and rugs. Make localized application to floor and baseboard. Spray directly into cracks, crevices and infested areas of shelving. Repeat treatment as needed.

TO CONTROL BEDBUGS: Spray mattresses lightly, particularly around tufts and seams. Take beds apart and spray in all joints. Treat baseboard, moldings and floors. Repeat treatment as needed.

TO CONTROL FLEAS (ADULTS AND LARVAE) AND TICKS (ADULTS AND LARVAE): Thoroughly spray infested areas, pet beds, resting quarters, nearby cracks and crevices, along and behind baseboard, moldings, window and door frames, and entire areas of the floor and floor covering. Fresh bedding should be placed in animal quarters following treatment. Repeat treatment as needed. Allow to dry thoroughly before allowing pets to contact treated areas.

TO CONTROL CLOTHES MOTHS: Remove any infested articles from storage, brush thoroughly, and air for several hours in sunlight, if possible. Apply spray liberally to empty chests, closets, bureaus and other storages directing the spray into cracks, joints and crevices. After airing, infested articles may be treated lightly, keeping nozzle at least three feet from fabric to avoid staining.

TO KILL LICE AND LOUSE EGGS: Spray in an inconspicuous area to test for possible staining or discoloration. Inspect again after drying, then proceed to spray entire area to be treated. Spray from a distance of 8 to 10 inches. Treat only those garments and parts of bedding, including mattresses and furniture that cannot be either laundered or dry cleaned. Allow all treated particles to dry thoroughly before use.

LIVESTOCK PESTS

Ready to use. Affix applicator to container for application. Do not transfer to another container unless it is a proper pesticide applicator/sprayer.

ON LIVESTOCK: To protect cattle (beef and dairy), goats, sheep, hogs and horses from Horn Flies, Face Flies, House Flies, Mosquitoes and Gnats: Apply a light mist sufficient to wet the surface of the hair. For face flies, spray face and head, but do not spray into eyes.

TO CONTROL STABLE FLIES, HORSE FLIES AND DEER FLIES: apply at a rate of 2 ounces per adult animal, sufficient to wet the hair thoroughly. Repeat treatment daily or at intervals necessary to give continued protection.

TO CONTROL BLOODSUCKING LICE: Apply to the infested areas of the animal, using a stiff brush to get the spray to the base of the hair. Repeat every 3 weeks if required.

TO CONTROL POULTRY LICE: Spray roosts, walls and nests or cages thoroughly. This should be followed by

spraying over the birds with a fine mist.

TO CONTROL BEDBUGS AND MITES IN POULTRY HOUSES: Spray crevices of roost poles, cracks in walls, and cracks in nests where the Bedbugs and Mites hide.

PET USE APPLIES TO USE ONLY ON DOGS

APPLICATION OF PRODUCT ON PETS MUST ONLY BE DONE INDOORS

ON DOGS; TO CONTROL FLEAS, TICKS AND LICE: Ready to use. Affix applicator to container for application. Do not transfer to another container. Start spraying at the tail, moving the dispenser rapidly and making sure that the animal's entire body is covered, including the legs and underbody. While spraying, fluff the hair so that the spray will penetrate to the skin. Make sure spray wets thoroughly, but do not saturate animal. Do not spray into eyes or face. Avoid contact with genitalia. Repeat application every two weeks if necessary.

DO NOT use on dogs under twelve (12) weeks old. Consult a veterinarian before using this product on medicated, debilitated, aged, pregnant or nursing animals. Sensitivities may occur after using ANY pesticide product for pets. If signs of sensitivity occur bathe your pet with mild soap and rinse with large amounts of water. If signs continue, consult a veterinarian immediately.

DO NOT USE ON CATS OR KITTENS.

OUTDOOR PEST CONTROL

TO HELP CONTROL TICKS IN OUTDOOR ACTIVITY AREAS: Ready to use. Affix applicator to container for application. Do not transfer to another container unless it is a proper pesticide applicator/sprayer. Treat a band of vegetation and leaf litter 6 - 10 feet wide and adjacent to activity areas, especially where dense vegetation occurs.

PESTS ON THE OUTDOOR SURFACE OF BUILDINGS: To temporarily control House Flies, Mosquitoes, Cluster Flies, Gnats and Flying Moths. For outdoor use only as an aid in reducing annoyance from these insects.

Dilute before using. Use clean sprayer. **Carefully measure and mix 1 fluid ounce of Home Pest Control and 12 fluid ounces of water (10 ozs. per gallon).** Using dilute mixture, spray pests on outside surfaces of screens, doors, window frames or wherever these insects may enter the room. Also treat surfaces around light fixtures on porches, in garages and other places where these insects alight or congregate. Repeat as necessary. Flush sprayer with clean water after each use.

ORNAMENTAL FLOWER GARDENS

Ready to use. Affix applicator to container for application. Do not transfer to another container unless it is a proper pesticide applicator/sprayer.

FOR USE ON: Roses, African violets, asters, azaleas, begonias, camellias, carnations, chrysanthemums, dahlias, delphiniums, dogwoods, English ivy, eunonymus, fuschia, geraniums, crassula, grape vines, Kentia palms, laurels, marigolds, rhododendrons, rubber plants, snapdragons, stocks, wandering jew, zinnias and other ornamentals to kill Whiteflies, Aphids, Lace bugs, Leafminers, Japanese Beetles, Pavement Ants, Clover Mites, Red Mites, Spider Mites, exposed Thrips, and Armyworms.

Use sufficient spray to obtain full coverage of all foliage, but do not spray to the point of runoff. When spraying plants, use a sweeping motion spraying no closer than 18 inches from the plant. Avoid heavy wetting of tender foliage, young plants and new growth. Do not spray plants when temperatures exceed 90° F. Contact insects directly whenever possible. Repeat treatment as infestation occurs.