



OFFICE OF CHEMICAL SAFETY AND POLLUTION PREVENTION

WASHINGTON, D.C. 20460

January 23, 2026

Kasey Ray
Registrations
Southern Agricultural Insecticides, Inc.
P.O. Box 218
Palmetto, FL 34220

Subject: Label Amendment - Registration Review Mitigation for Permethrin
Product Name: GARDEN INSECT DUST WITH PERMETHRIN
EPA Registration Number: 829-293
Case Number: 472199
Application Dates: 2/10/2021

Dear Kasey Ray:

The Agency, in accordance with the Federal Insecticide, Fungicide, and Rodenticide Act (FIFRA), as amended, has completed reviewing all the information submitted with your application to support the Registration Review of the above referenced product in connection with the Permethrin Interim Decision, and has concluded that your submission is acceptable. The label referred to above, submitted in connection with registration under FIFRA, as amended, is acceptable.

Should you wish to add/retain a reference to the company's website on your label, then please be aware that the website becomes labeling under the Federal Insecticide, Fungicide, and Rodenticide Act and is subject to review by the Agency. If the website is false or misleading, the product would be misbranded and unlawful to sell or distribute under FIFRA section 12(a)(1)(E). 40 CFR 156.10(a)(5) list examples of statements EPA may consider false or misleading. In addition, regardless of whether a website is referenced on your product's label, claims made on the website may not substantially differ from those claims approved through the registration process. Therefore, should the Agency find or if it is brought to our attention that a website contains false or misleading statements or claims substantially differing from the EPA approved registration, the website will be referred to the EPA's Office of Enforcement and Compliance Assurance.

A stamped copy of your labeling is enclosed for your records. This labeling supersedes all previously accepted labeling and must be used at your next label printing. You must submit one copy of the final printed labeling before you release the product for

shipment with the new labeling. In accordance with 40 CFR 152.130(c), you may distribute or sell this product under the previously approved labeling for 12 months from the date of this letter. After 12 months, you may only distribute or sell this product if it bears this new revised labeling or subsequently approved labeling. "To distribute or sell" is defined under FIFRA section 2(gg) and its implementing regulation at 40 CFR 152.3.

If you have any questions about this letter, please contact Alex McKee by phone at 202-566-1939, or via email at mckee.alex@epa.gov.

Sincerely,

A handwritten signature in blue ink that reads "Dana L. Friedman". The signature is written in a cursive, flowing style.

Dana L. Friedman, Chief
Risk Management and Implementation Branch 1
Pesticide Re-Evaluation Division
Office of Pesticide Programs
U.S. Environmental Protection Agency

ENCLOSURE: Stamped label

MASTER LABEL

SA SOUTHERN
50 AG®

GARDEN INSECT DUST WITH PERMETHRIN

FOR BOTH INDOOR AND OUTDOOR USE
A BROAD SPECTRUM READY-TO-USE INSECTICIDE
FOR USE ON VEGETABLES AND ORNAMENTAL PLANTS

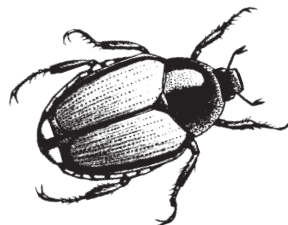
ACCEPTED

Jan 23, 2026

Under the Federal Insecticide, Fungicide
and Rodenticide Act as amended, for the
pesticide registered under
EPA Reg. No. 829-293

ACTIVE INGREDIENT:

Permethrin 0.25%
OTHER INGREDIENTS: 99.75 %
Total 100.00%



KEEP OUT OF REACH OF CHILDREN

CAUTION

FIRST AID

If Swallowed: Call a poison control center or doctor immediately for treatment advice. Have person sip a glass of water if able to swallow. Do not induce vomiting unless told to by a poison control center or doctor. Do not give anything by mouth to an unconscious person.

If on Skin or Clothing: Take off contaminated clothing. Rinse skin immediately with plenty of water for 15-20 minutes. Call a poison control center or doctor for treatment advice.

If Inhaled: Move person to fresh air. If not breathing, call 911 or an ambulance, then give artificial respiration, preferable mouth-to-mouth, if possible. Call a poison control center or doctor for further treatment advice.

If in Eyes: Hold eye open and rinse slowly and gently with water for 15-20 minutes. Remove contact lenses, if present, after the first 5 minutes, then continue rinsing eye. Call a poison control center or doctor for treatment advice.

Have the product container or label with you when calling a poison control center or doctor or going for treatment. You may also contact 1-866-767-5089 for emergency medical treatment information.

PRECAUTIONARY STATEMENTS

Hazards to Humans and Domestic Animals

CAUTION: Harmful if inhaled. Avoid breathing dust. Remove contaminated clothing and wash clothing before reuse. Avoid contact with eyes or clothing. Wash thoroughly with soap and water after handling and before eating, drinking, chewing gum, using tobacco or using the toilet. Remove contaminated clothing and wash clothing before reuse.

Environmental Hazards

This product is extremely toxic to aquatic organisms, including fish and invertebrates. To protect the environment, do not allow pesticide to enter or run off into storm drains, drainage ditches, gutters or surface waters. Applying this product in calm weather when rain is not predicted for the next 24 hours will help to ensure that wind or rain does not blow or wash pesticide off the treatment area.

This product is highly toxic to bees exposed to direct treatment on blooming crops or weeds. Do not apply this product or allow it to drift to blooming crops or weeds while bees are actively visiting the treatment area.

Southern Agricultural Insecticides, Inc.

Palmetto, FL 34220 Hendersonville, NC 28793 Boone, NC 28607
E.P.A. Reg. No. 829 - 293 J6 EPA Est. No. 829-FL-1, 829-NC-1 (4)

Net Weight:

1 lb. (0.454 kg.), 4 lb. (6.35 kg.), 25 lb. (11.34 kg.)

STORAGE AND DISPOSAL

Do not contaminate water, food, or feed by storage and disposal.

PESTICIDE STORAGE: Store product in original container in a cool, dry, locked place out of reach of children and pets.

PESTICIDE DISPOSAL: If empty: Do not reuse this container. Place in trash or offer for recycling if available. **If partly filled:** Call your local solid waste agency or 1-800-CLEANUP for disposal instructions. Never place unused product down any indoor or outdoor drain.

Do not pour or dispose down-the-drain or sewer. Call your local solid waste Agency for local disposal options.

RESTRICTIONS

Do not allow adults, children, or pets to enter the treated area until dusts have settled. Remove pets, birds, and cover fish aquariums before use.

Do not apply this product in a manner that will contact adults, children, or pets, either directly or through drift. Remove pets, birds, and cover fish aquariums before using.

Do not water the treated area to the point of run off.

Do not make applications during rain.

DIRECTIONS FOR USE - For both indoor and outdoor use.

Do not allow to enter indoor or outdoor drains. No permita la entrada a desagües internos o externos.



For information on this pesticide product (including health concerns, medical emergencies, or pesticide incidents), call the National Pesticide Telecommunications Network at 1-800-858-7378.

Follow proper disposal procedures on this label. Siga las indicaciones del etiquetado para el desecho apropiado del producto.

It is a violation of Federal law to use this product in a manner inconsistent with its labeling.

Spot treatments must not exceed two square feet in size (for example, 2 ft. by 1 ft. or 4 ft. by 0.5 ft.)

Treat surfaces to ensure thorough coverage but avoid runoff.

To treat insects harbored in voids and cracks-and-crevices, applications must be made in such a manner to limit dripping and avoid runoff onto untreated structural surfaces and plants.

All **OUTDOOR** spray applications must be limited to spot or crack-and-crevice treatments only, except for the following permitted uses:

1. Application to pervious surfaces such as soil, lawn, turf, and other vegetation;
2. . Perimeter band treatments of 7 feet wide or less from the base of a man-made structure to pervious surfaces (e.g., soil, mulch, or lawn);
3. Applications to underside of eaves, soffits, doors, or windows permanently protected from rainfall by a covering, overhang, awning, or other structure;
4. Applications around potential exterior pest entry points into man-made structures such as doorways and windows, when limited to a band not to exceed one inch;
5. Applications to vertical surfaces (such as the side of a man-made structure) directly above impervious surfaces (e.g., driveways, sidewalks, etc.), up to 2 feet above ground level;
6. Applications to vertical surfaces directly above pervious surfaces, such as soil, lawn, turf, mulch or other vegetation) only if the pervious surface does not drain into ditches, storm drains, gutters, or surface waters.

Do not water the treated area to the point of runoff. Do not make applications during rain.

- For soil or foliar applications, do not apply by ground within 25 feet of lakes, reservoirs, rivers, permanent streams, marshes or natural ponds, estuaries and commercial fish farm ponds.
- Do not spray the product into fish pools, ponds, streams, or lakes. Do not apply directly to sewers or storm drains, or to any area like a drain or gutter where drainage to sewers, storm drains, water bodies, or aquatic habitat can occur.
- Do not allow the product to enter any drain during or after application.
- Do not apply directly to impervious horizontal surfaces such as sidewalks, driveways, and patios except as a spot or crack-and-crevice treatment.
- Do not apply or irrigate to the point of runoff.
- Do not make applications during rain. Avoid making applications when rainfall is expected before the product has sufficient time to dry (minimum 4 hours).
- Rainfall within 24 hours after application may cause unintended runoff of pesticide application.
- Do not apply when the wind speed is greater than 15 mph.

Ornamental Plants - Indoors:

Use a dust applicator such as a shaker can, dust gun, puffer or other bulbous duster, rotary duster or other appropriate duster available.

To protect plants in indoor landscaping - Apply directly on insects to control **leafrollers, armyworms, cutworms** and **cabbageworms** on chrysanthemums and **fungus gnats** on velvet plant.

Dust lightly to cover both upper and lower leaf surfaces with a thin, even film of dust to control **aphids, armyworms, corn earworms, fall cankerworms, inchworms, Japanese beetles, leafminers, leafrollers, mealybugs, scale crawlers, spring cankerworms**, and **exposed thrips** on the following plant:

Chrysanthemum	Fuschia	Pansy	Pothos	Velvet plant
Coleus	Gladiolus	Petunia	Prayer plant	Verbena
Crown of thorns	Grape ivy	Philodendron	Purple passion	Zinnia
Cockscomb	Hypoestes	Piggy-back plant	Schefflera	
Draceana	Ivy	Piperomia	Snapdragon	
Dumbcane	Marigold	Poinsettia	Snake Plant	
English Ivy	Palm	Portulaca	Statice	

If application is made indoors, remove infested plants from living area prior to application. Dust plants in an area not likely to be occupied by children or pets (particularly fish). When dust settles plants can be returned to original location.

Use with care on ferns, palms and fuschia. As with all plants listed above, especially carnations, chrysanthemums and roses, there exists a wide variety of species and cultivars, and therefore, a wide variety of susceptibility to injury. To ascertain possible phytotoxicity, dust a few plants as described above, wait 24 hours and check for possible injury. Repeat applications may be necessary to control adult Japanese beetles on roses.

Ornamental Plants - Outdoors:

Use a dust applicator such as a shaker can, dust gun, puffer or other bulbous duster or other appropriate duster available. Dust lightly to cover both upper and lower leaf surfaces with a thin, even film of dust. Apply when air is calm to avoid drift and contact with eyes and skin. Start applying at the farthest corner of the treatment area and work backward to avoid contact with dusted surfaces. Allow dust to settle in treated areas before reentering. Contact insects directly whenever possible.

Controls **aphids, cicadas, corn earworms, fall cankerworms, inchworms, leafminers, leafrollers, mealybugs, bagworms** and **exposed thrips** on the following plants:

Ageratum	Gladiolus	Petunia
Arizona Cypress	Gold Bells	Philodendron
Aster	Hypoestes	Poinsettia
Azalea	Ivy	Rhododendron
Begonia	Lilac	Rose
Coleus	Marigold	Snapdragon
Common Ninebark	Mark Orange	Taxus
Common Snowberry	Nannyberry	Wax Plant
Exacum	Palm	Weeping fig
Euonymous	Pansy	Zinnia
English Ivy	Pea Shrub	

May also be used on such plants as camellias, carnations, chrysanthemums, dahlias, delphiniums, dogwoods, fuschia, geraniums, crassula, grapevines (ornamental), laurels, stocks and wandering Jews.

Home Vegetable Gardens:

Use a dust applicator such as a shaker can, dust gun, puffer or other bulbous duster, rotary duster or other appropriate duster available. Dust lightly to cover both upper and lower leaf surfaces with a thin, even film of dust. Apply when air is calm to avoid drift and contact with eyes and skin. Start applying at the farthest corner of the treatment area and work backward to avoid contact with dusted surfaces. Allow dust to settle in treated areas before reentering.

Cole Crops: Broccoli, Brussels Sprouts, Cabbage and Cauliflower - To control beet armyworm, diamond back moth, imported cabbageworm, cabbage aphid, cabbage looper, apply every 5 days as needed. Can be applied up to one day prior to harvest. Do not make more than 10 applications on cabbage and 8 applications on the other cole crops per season.

Corn (Sweet) - To control corn earworms, European corn borers, fall armyworms, southern armyworms, southern armyworms, apply to plants every 5 days as needed. Do not make more than 6 applications per season. Can be applied up to 1 day prior to harvest.

Cucurbits: Balsam pear (bitter melon), Chinese waxgourd (Chinese preserving melon), Citrus melon, cucumber, Gherkin, Edible gourds, Melons including hybrids such as cantaloupe,

casaba, crenshaw, honeydew, honeyballs, mango melon, muskmelon, and Persian melon, pumpkin, summer & winter squash and watermelon - To control aphids, cabbage looper, cucumber beetle (adults), cutworms, leafhoppers, leafminers, melonworm, pickleworm, plant bugs, squash bugs, ensure uniform coverage of plants. Do not make more than 8 applications per crop per season. Can be applied up to the day of harvest.

Eggplant - To control Colorado potato beetle, vegetable leaf miner, ensure uniform coverage of plants. Do not make more than 16 applications per season. Can be applied up to 3 days prior to harvest.

Horseradish - To control crucifer weevil, do not make more than 3 foliar applications per season. Can be applied up to 22 days prior to harvest.

Leafy Vegetables: amaranth, arugula, celery, celtuce, chervil, corn salad, chrysanthemum (edible-leaved and garland), cress (garden and upland), dandelion, dock, endive, fennel, lettuce (head and leaf), orach, parsley, purslane (garden and winter), rhubarb, spinach and Swiss chard - To control alfalfa looper, aphids, beet armyworm, cabbage looper, corn earworm, cutworms, European cornborer, fall armyworm, green cloverworm, southern armyworm, vegetable leaf miner, apply every 5 to 10 days as needed. Do not make more than 7 applications per crop per season. Can be applied up to 1 day prior to harvest.

Potatoes - To control beet armyworm, colorado potato beetle, potato beetle, potato leafhopper, potato aphid, potato tuberworm, cabbage looper, cutworms, European corn borer, potato psyllid, tarnished plant bug, do not make more than 12 applications per season. Can be applied up to 7 days prior to harvest.

Peppers - To control vegetable leafminer, cabbage looper, flea beetle, corn earworm, pepper weevil, European corn borer, do not make more than 8 applications per season. Can be applied up to 3 days prior to harvest.

Tomatoes (Do not apply on cherry tomatoes and varieties yielding tomatoes less than one inch in diameter.) - To control beet and southern armyworms, tomato pinworms, tomato fruitworms, hornworms, granulate cutworms, Colorado potato beetles, cabbage loopers, apply to plants for uniform coverage. Do not make more than 6 applications per season. Can be applied up to day of harvest.

IMPORTANT: READ BEFORE USE

Read the entire Directions for Use, Conditions, Disclaimer of Warranties and Limitations of Liability before using this product. If terms are not acceptable, return the unopened product container at once. To the extent consistent with applicable law, all such risk shall be assumed by the user or buyer.

CONDITIONS: The directions for use of this product are believed to be adequate and should be followed carefully. However, it is impossible to eliminate all risks associated with the use of this product. Ineffectiveness or other unintended consequences may result because of such factors as weather conditions, presence of other materials, or the manner of use or application, all of which are beyond the control of Southern Agricultural Insecticides, Inc. All such risks shall be assumed by the user or buyer.

DISCLAIMER OF WARRANTIES: To the extent consistent with applicable law, Southern Agricultural Insecticides, Inc. makes no other warranties, express or implied, or merchantability or of fitness for a particular purpose or otherwise, that extend beyond the statements made on this label. No agent of Southern Agricultural Insecticides, Inc. is authorized to make any warranties beyond those contained herein or to modify the warranties contained herein. Southern Agricultural Insecticides, Inc. disclaims any liability whatsoever for special, incidental or consequential damages resulting from the misuse or mishandling of this product.

LIMITATIONS OF LIABILITY: THE EXCLUSIVE REMEDY OF THE USER OR BUYER FOR ANY AND ALL LOSSES, INJURIES OR DAMAGES RESULTING FROM THE USE OR HANDLING OF THIS PRODUCT, WEATHER IN CONTRACT, WARRANTY, TORT, NEGLIGENCE, STRICT LIABILITY OR OTHERWISE, SHALL NOT EXCEED THE PURCHASE PRICE PAID, OR AT SOUTHERN AGRICULTURAL INSECTICIDES ELECTION, THE REPLACEMENT OF PRODUCT.

For product information email us at info@Southernag.com