

829-292

01/26/2010

1/6

UNITED STATES ENVIRONMENTAL PROTECTION AGENCY  
WASHINGTON, D.C. 20460



OFFICE OF  
PREVENTION, PESTICIDES,  
AND TOXIC SUBSTANCES

January 26, 2010

Cynthia Huffman  
Southern Agricultural Insecticides, Inc.  
P.O. Box 218  
Palmetto, FL 34220

Dear Ms. Huffman:

Subject: (1) Notification of Corrected Basic CSF and New Alternate CSF, dated 12/15/09  
(2) Notification of Alternate Brand Name: SA-50 Chlorpyrifos 2.5% Granular Insecticide

The Agency is in receipt of your Application for Pesticide Notification under Pesticide Registration Notice 98-10, dated December 15, 2009, for SA-50 Dursban 2.5% Granular Insecticide, EPA Reg. No. 829-292. The Registration Division (RD) has conducted a review of this request for its applicability under PRN 98-10 and finds that the actions requested fall within the scope of PRN 98-10. The information submitted with the application has been stamped "Notification" and will be placed in our records. If you have any questions, please contact me directly at 703-308-8735 or email me at [chao.julie@epa.gov](mailto:chao.julie@epa.gov).

Sincerely,

A handwritten signature in cursive script that reads "Julie A. Chao".

Julie A. Chao  
Insecticide-Rodenticide Branch  
Registration Division (7505P)  
Office of Pesticide Programs

Please read instructions on reverse before using form.

Form Approved

Form Approved

Form No. 2070-0060

Print Form



United States Environmental Protection Agency Washington, DC 20460

Registration [ ] Amendment [ ] Other [X]

OPP Identifier Number

Application for Pesticide - Section I

1. Company/Product Number 829-292; 2. EPA Product Manager Venus Eagle; 3. Proposed Classification [X] None [ ] Restricted; 4. Company/Product Name SA-50 Dursban 2.5% Granular Insecticide; 5. Name and Address of Applicant; 6. Expedited Review.

Section - II

Amendment - Explain below [ ] Resubmission in response to Agency letter dated [ ] Notification - Explain below [X] Final printed labels in response to Agency letter dated [ ] "Me Too" Application [ ] Other - Explain below [ ]

NOTIFICATION

JAN 26 2010

Explanation: Use additional page(s) if necessary. (For section I and Section II.) Notification of alternate product name: SA-50 Chlorpyrifos 2.5% Granular Insecticide Submission of CSF listing an alternate source for the active ingredient. Submission of a corrected basic CSF. The pounds of active ingredient were listed incorrectly on the previous CSF.

Section - III

1. Material This Product Will Be Packaged In: Child-Resistant Packaging, Unit Packaging, Water Soluble Packaging, 2. Type of Container, 3. Location of Net Contents Information, 4. Size(s) Retail Container, 5. Location of Label Directions, 6. Manner in Which Label is Affixed to Product

Section - IV

1. Contact Point (Complete items directly below for identification of individual to be contacted, if necessary, to process this application.) Name: Cynthia Huffman, Title: Registrations, Telephone: 941-722-3285; Certification: I certify that the statements I have made on this form and all attachments thereto are true, accurate and complete...; 2. Signature: Cynthia Huffman; 3. Title: Registrations; 4. Typed Name: Cynthia Huffman; 5. Date: December 15, 2009; 6. Date Application Received (Stamped)



Southern Agricultural Insecticides, Inc.

3/6

P.O. Box 218
Palmetto, FL 34220
Office: (941) 722-3285
Fax: (941) 723-2974

P.O. Box 218
Hendersonville, NC 28793
Office: (828) 692-2233
Fax: (828) 693-7554

P.O. Box 218
Boone, NC 28607
Office: (828) 264-8843
Fax: (828) 264-5236

December 15, 2009

Document Processing Desk (7504C)
Office of Pesticide Programs
U.S. Environmental Protection Agency
Ariel Rios Building
1200 Pennsylvania Ave. NW
Washington, DC 20460

Re: 829-292
Dursban 2.5% Granular Insecticide

Enclosed please find a notification of a corrected basic CSF. The change is correcting the pounds of active ingredient from 25.2 to 25.72.

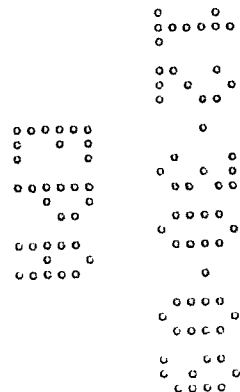
Also included in this notification is an alternative new CSF and an alternative product name. A copy of the label bearing that name is included.

A certification statement consistent with PR Notice 98-10, section VI.A.1 is included on a separate paper.

Sincerely,

Cynthia Huffman (handwritten signature)

Cynthia Huffman
Southern Agricultural Insecticides, Inc.





5/6

**SA SOUTHERN  
50 AG®**

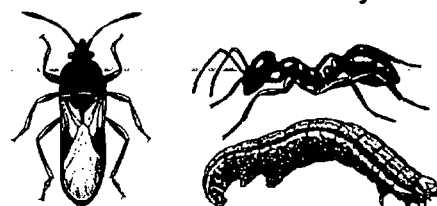
# CHLORPYRIFOS 2.5%

## GRANULAR INSECTICIDE

For professional use only. Not for sale to homeowners.  
For Control of Various Insects (and Other Arthropods) Infesting Sod  
Farms, Golf Course Turf, Outdoor Areas around Industrial Plant Sites,  
and Ornamental Nurseries for Commercial Production Only.

**Active Ingredient:**

Chlorpyrifos (3,5,6-trichloro-2-pyridinyl) phosphorothioate	2.5%
Inert Ingredients	97.5%
Total	100.0%



Keep Out of Reach of Children

### CAUTION

#### FIRST AID

#### ORGANOPHOSPHATE

**IF SWALLOWED:** Call a physician or Poison Control Center. Drink 1 or 2 glasses of water and induce vomiting by touching back of throat with finger, or if available by administering syrup of ipecac. If person is unconscious, do not give anything by mouth and do not induce vomiting.

**IF ON SKIN:** Wash with plenty of soap and water. Get medical attention if irritation persists. **IF INHALED:** Remove victim to fresh air. If not breathing, give artificial respiration, preferably mouth-to-mouth. Get medical attention. **IF IN EYES:** Flush eyes with plenty of water. Call a physician if irritation persists. **FOR CHEMICAL EMERGENCY:** Spill, leak, fire, exposure, or accident call CHEMTREC 1-800-424-9300.

Have the product container or label with you when calling a poison control center or doctor, or going for treatment. For more information on this product (including health concerns, medical emergencies, or pesticide incidents), call the National Pesticide Information Center at: 1-800-858-7378.

**NOT TO PHYSICIAN:** Chlorpyrifos is a cholinesterase inhibitor. Treat symptomatically. Atropine, only by injection, is the preferable antidote.

#### PRECAUTIONARY STATEMENTS

**HAZARDS TO HUMANS AND DOMESTIC ANIMALS**  
**CAUTION:** Harmful if swallowed or absorbed through skin or inhaled. Avoid contact with eyes, skin, or clothing. Avoid breathing dust.

#### PERSONAL PROTECTIVE EQUIPMENT (PPE)

Some materials that are chemical resistant to this product are made of any waterproof material. If you want more options, follow the instructions for category A on an EPA chemical-resistant selection chart.

Loaders, Applicators and all other handlers must wear: coveralls over long-sleeved shirt and long pants, Chemical resistant gloves, chemical resistant footwear, a NIOSH approved dust mist filtering respirator with MSHA/NIOSH approval number prefix TC-21C or a NIOSH approved respirator with any N, R, P or HE filter.

Follow manufacturer's instructions for cleaning/maintaining PPE. If not such instructions for washables exist, use detergent and hot water. Keep and wash PPE separate from other laundry.

#### USER SAFETY RECOMMENDATIONS

Users should: wash hands before eating, drinking, chewing gum, using tobacco or using the toilet. Remove clothing immediately if pesticide gets inside. Then wash thoroughly and put on clean clothing.

#### ENVIRONMENTAL HAZARDS

This pesticide is toxic to fish, aquatic invertebrates, small mammals and birds. Do not apply directly to water, or to areas where surface water is present or to intertidal areas below the mean high water mark. Drift and runoff may be hazardous to aquatic organisms in water adjacent to treated areas. Do not contaminate water when disposing of equipment wash water or rinsate.

This product is highly toxic to bees exposed to direct treatment or residues on blooming crops or weeds. Do not apply this product or allow it to drift to blooming crops or weeds if bees are visiting the treatment area.

NOTIFICATION

JAN 26 2010

EPA EST. NO. 829-FL-1 (3); 829-NC-1 (4); 829-NC-2 (5)  
number following Est. No. corresponds to first digit in Lot No.

### Southern Agricultural Insecticides, Inc.

P O Box 218 Palmetto, Fla. 34220 Hendersonville, N.C. 28793 Boone, N.C. 28607  
941-722-3285 E.P.A. Reg. No. 829-292

## Net Weight: 50 lbs. (22.68 kg)

6/6

# DIRECTIONS FOR USE

It is a violation of Federal Law to use this product in a manner inconsistent with its labeling.

Read all directions for use before applying.

Do not apply this product in a way that will contact workers or other persons, either directly or through drift. Only protected handlers may be in the area during application. For any requirements specific to your State or Tribe, consult the agency responsible for pesticide regulation.

## AGRICULTURAL USE REQUIREMENTS

Use this product only in accordance with its labeling and with the Worker Protection Standard, 40 CFR part 170. This Standard contains requirements for the protection of agricultural workers on farms, forests, nurseries, and greenhouses, and handlers of agricultural pesticides. It contains requirements for training, decontamination, notification, and emergency assistance. It also contains specific instructions and exceptions pertaining to the statements on this label about personal protective equipment (PPE), and restricted entry interval. The requirements in this box only apply to uses of this product that are covered by the Worker Protection Standard.

Do not enter or allow worker entry into treated areas during the restricted entry interval (REI) of 24 hours. Certified crop advisors or persons entering fields under their direct supervision under certain circumstances may be exempt from the early reentry requirement pursuant to 40 CFR Part 170.

**PPE** required for early entry to treated areas that is permitted under the Worker Protection Standard and that involves contact with anything that has been treated, such as plants, soil, or water, is: coveralls over short sleeved shirt and short pants, Chemical resistant gloves such as or made of any waterproof material, chemical resistant footwear plus socks, and Chemical resistant headgear for overhead exposure. Notify workers of the application by warning them orally and by posting warning signs at entrances to treated areas.

## NON-AGRICULTURAL USE REQUIREMENTS

The requirements in this box apply to uses of this product that are NOT within the scope of the Worker Protection Standard for agricultural pesticides (40 CFR Part 170). The WPS applies when this product is used to produce agricultural plants on farms, forests, nurseries, or greenhouses. Keep the public (especially children and pets) off treated area until subsequent rainfall or irrigation has washed the bait into the soil and the area is dried.

## STORAGE AND DISPOSAL

Do not contaminate water, food, or feed by storage or disposal. **PESTICIDE STORAGE:** Store this pesticide in original container in a locked storage area.

**PESTICIDE DISPOSAL:** Wastes resulting from the use of this product may be disposed of at approved waste disposal facility.

**CONTAINER DISPOSAL:** Completely empty bag into application equipment. Then dispose of bag in a sanitary landfill or by incineration.

## Use Precautions and Restrictions

Chlorpyrifos\* 2.5% granular insecticide is intended for use in Nurseries for Commercial Production Only, Golf Course Turf, Sod Farms, Road Medians and Industrial Plant sites to Control Various listed Insects. Do not use this product indoors. Do not enter or allow others to enter until dusts have settled. Do not feed grass clippings to livestock. Do not use hay for livestock bedding. Keep out of fishpools and other bodies of water.

**Insects Controlled Include:** Ants (except for fire, carpenter, harvester, and pharaoh), Armyworms, Billbugs, Boxelder bugs, Chinch bugs, Clover mites, Crickets, Cutworms, Earwigs, Grasshoppers, Sod webworms (lawn moths), Sowbugs (pillbugs)

### Dosage Rates

Area To Be Treated	lbs. of Chlorpyrifos 2.5%
1,000 sq ft	1 pound
5,000 sq ft	5 pounds
10,000 sq ft	10 pounds

Maximum application rate is 1 lb. a.i. per acre

## Application Instructions

### Applications to Golf Course Turf, Sod Farms, Outside of Industrial Plant Buildings and Fire Ant Mounds

Apply Chlorpyrifos 2.5% uniformly to turf at the rate of 1 pound per 1,000 sq ft. Consult the table to determine the amount of Chlorpyrifos 2.5% needed for a larger-sized areas. Use any hand or power-operated gravity or rotary type spreader designed for application of granular materials. To help obtain uniform distribution of Chlorpyrifos 2.5% on the turf, apply one-half of the required amount of product in one direction; then apply the amount remaining at a right angle.

#### 1. To control ants (except for fire, carpenter, harvester, and pharaoh).

Apply Chlorpyrifos 2.5% at a rate of 1 ounce (2 tablespoons) per active mound. Sprinkle granules gently and evenly over surface of mound and out approximately two feet surrounding the mound. Avoid disturbing ants. For best results, apply when ants are least active: in cool weather, 65°F to 80°F, or in early morning or late evening hours. Treat new mounds as they appear.

**Note:** Broadcast use on residential turf is not allowed.

### To Prevent Infestation Outside of Industrial Plant Buildings by Insects:

**Such as:** ants, (except for fire, carpenter, harvester, and pharaoh) crickets, earwigs, sowbugs (pillbugs), clover mites, spiders (except for black widow and brown recluse), boxelder bugs. Treat a band of soil 6 to 10 feet around and adjacent to the perimeter of the building where pests are active and may find entrance. Use the same dosage recommended (1-pounds per-1,000 sq-ft.) for control of these pests on turf found in the application chart.

### To Control the Following Insects in Ornamental Nurseries for Commercial Production

**To Control:** Ants, (except for fire, carpenter, harvester, and pharaoh), Armyworms, Crickets, Cutworms, Sowbugs (pillbugs), Grasshoppers and Earwigs. Apply Chlorpyrifos 2.5% evenly over soil within flower beds and under shrubbery. Use the same dosage recommended (1 pounds per 1,000 sq. ft.) for control of these pests on turf found in the application chart.

**Note:** 1 oz = 6 teaspoons = 2 tablespoons = 1/8 cup

**In Nursery Beds and Potting Media:** Thoroughly mix 1 pound of Chlorpyrifos 2.5% per cubic yard of media. Use equipment suitable to give uniform distribution of granules.

**In Container and Field Grown Woody Ornamentals (B&B Stock):** Broadcast Chlorpyrifos 2.5% at 250 lbs. per Acre (6 lb. A.I. per acre) as a preharvest treatment to ornamental (non-food bearing) plants.

### Inherent Risks of Use

It is impossible to eliminate all risks associated with use of this product. Plant injury, lack of performance, or other unintended consequences may result because of such factors as use of the product contrary to label instructions (including conditions noted on the label, such as unfavorable temperature, soil conditions, etc.), abnormal conditions (such as excessive rainfall, drought, tornadoes, hurricanes), presence of other materials, the manner of application, or other factors, all of which are beyond the control of Southern Ag and Seller. To the extent consistent with applicable law, all such risks shall be assumed by Buyer.

### WARRANTY—CONDITIONS OF SALE

OUR RECOMMENDATIONS FOR USE of this product are based upon tests believed reliable. Follow directions carefully. Timing and method of application, weather and crop conditions, mixtures with other chemicals not specifically recommended and other influencing factors in the use of this product are beyond the control of the Seller. To the extent consistent with applicable law, buyer assumes all risks of use, storage and handling of this material not in strict accordance with directions given herewith.

To the extent consistent with applicable law, in no case shall the Manufacturer or the Seller be liable for consequential, or incidental damages or losses resulting from the use or handling of this product when such use and/or handling is not in strict accordance with directions given herewith. The foregoing is a condition of sale by the Seller and is accepted as such by the Buyer.



For information or questions email us at support@southernag.com

