



OFFICE OF CHEMICAL SAFETY AND POLLUTION PREVENTION

WASHINGTON, D.C. 20460

December 11, 2023

Kasey Ray
Registrant
Southern Agricultural Insecticides, Inc.
PO Box 218
Palmetto, FL 34220

Subject: Label Amendment – Implementing Chlorpyrifos Biological Opinion (BiOp)
Mitigation and General Updates
Product Name: Chlorpyrifos 1% Mole Cricket Bait
EPA Registration Number: 829-291
Application Date: 10/31/2022
Decision Number: 588532

Dear Kasey Ray:

The Agency, in accordance with the Federal Insecticide, Fungicide and Rodenticide Act (FIFRA), as amended, has completed reviewing all of the information submitted with your application to support the Registration Review of the above referenced product in connection with the Chlorpyrifos 2022 Biological Opinion and has concluded that your submission is acceptable. This approval does not affect any conditions that were previously imposed on this registration. You continue to be subject to existing conditions on your registration and any deadlines connected with them.

A stamped copy of your labeling is enclosed for your records. This labeling supersedes all previously accepted labeling. The next label printing of this product must use this labeling unless subsequent changes have been approved. In accordance with 40 CFR § 152.130(c), you may distribute or sell this product under the previously approved labeling for 12 months from the date of this letter. After 12 months, you may only distribute or sell this product if it bears this new revised labeling or subsequently approved labeling. "To distribute or sell" is defined under FIFRA section 2(gg) and its implementing regulation at 40 CFR § 152.3.

Should you wish to add/retain a reference to the company's website on your label, then please be aware that the website becomes labeling under FIFRA and is subject to review by the Agency. If the website is false or misleading, the product would be misbranded and unlawful to

sell or distribute under FIFRA section 12(a)(1)(E). 40 CFR 156.10(a)(5) lists examples of statements EPA may consider false or misleading. In addition, regardless of whether a website is referenced on your product's label, claims made on the website may not substantially differ from those claims approved through the registration process. Therefore, should the Agency find or if it is brought to our attention that a website contains false or misleading statements or claims substantially differing from the EPA approved registration, the website will be referred to the EPA's Office of Enforcement and Compliance.

Your release for shipment of the product constitutes acceptance of these conditions. If these conditions are not complied with, the registration will be subject to cancellation in accordance with FIFRA section 6.

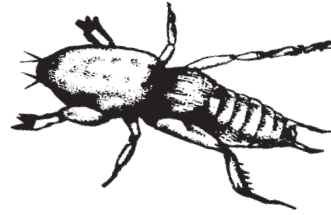
If you have any questions, please contact David Drawbaugh at Drawbaugh.David@epa.gov.

Sincerely,



Michael Walsh
Product Manager 11
Invertebrate & Vertebrate Branch 2
Registration Division
Office of Pesticide Programs

Attachment



CHLORPYRIFOS 1% MOLE CRICKET BAIT

For Control of Mole Crickets and various other listed Insects
Infesting Turf on Golf Courses, Sod Farms, Road Medians and
Commercial Ornamental Nurseries

Active Ingredient:

Chlorpyrifos: O,O-diethyl-O-(3,5,6-trichloro- 2-pyridinyl)phosphorothioate	1.0%
Other Ingredients	99.0%
Total	100.0%

Keep Out of Reach of Children

CAUTION

PRECAUTIONARY STATEMENTS
HAZARDS TO HUMANS AND DOMESTIC ANIMALS
CAUTION: Harmful if inhaled, swallowed or absorbed through the skin.
Causes moderate eye irritation. Avoid breathing dust. Avoid contact with
eyes, skin or clothing.

Southern Agricultural Insecticides, Inc.

Palmetto, Fla. 34220	Hendersonville, N.C. 28793
P.O. Box 218 Palmetto, FL 34220	Boone, N.C. 28607
941-722-3285	E.P.A. Reg. No. 829-291 EPA Est. No. 829-FL-1

Net Weight: 40 lbs. (18.14 kg)

ACCEPTED
12/11/2023
Under the Federal Insecticide, Fungicide
and Rodenticide Act as amended, for the
pesticide registered under
EPA Reg. No. 829-291

**FIRST AID
ORGANOPHOSPHATE**

IF INHALED: Move person to fresh air. If person is not breathing, call 911 or an ambulance, then give artificial respiration, preferably mouth-to-mouth, if possible. Call a poison control center or doctor for further treatment advice.

IF ON SKIN or CLOTHING: Take off contaminated clothing. Rinse skin immediately with plenty of water for 15-20 minutes. Call a poison control center or doctor for treatment advice.

IF IN EYES: Hold eye open and rinse slowly and gently with water for 15-20 minutes. Remove contact lenses, if present, after the first 5 minutes, then continue rinsing eye. Call a poison control center or doctor for treatment advice.

IF SWALLOWED: Call a poison control center or doctor immediately for treatment advice. Have person sip a glass of water if able to swallow. Do not induce vomiting unless told to do so by the poison control center or doctor. Do not give anything by mouth to an unconscious person.

NOTE TO PHYSICIAN: Chlorpyrifos is a cholinesterase inhibitor. Treat symptomatically. Atropine, only by injection, is the preferable antidote. Have the product container or label with you when calling a poison control center or doctor, or going for treatment.

For information on this product, call the National Pesticide Information Center at 1-800-858-7378.

For medical emergencies, call the poison control center at 1-800-222-1222

**PRECAUTIONARY STATEMENTS
HAZARDS TO HUMANS AND DOMESTIC ANIMALS**

CAUTION: Harmful if inhaled, swallowed or absorbed through the skin. Causes moderate eye irritation. Avoid breathing dust. Avoid contact with eyes, skin or clothing.

PERSONAL PROTECTIVE EQUIPMENT (PPE)

Some materials that are chemical-resistant to this product are made of any waterproof material. If you want more options, follow the instructions for category A on an EPA chemical-resistance category selection chart.

Loaders, applicators and all other handlers must wear coveralls over long-sleeved shirt and long pants.

Chemical-resistant gloves made of Barrier Laminate or Butyl Rubber \geq 14 mils.

Chemical-resistant footwear plus socks ,

A NIOSH approved particulate respirator with any N, R or P filter with NIOSH approval number prefix TC-84A; or a NIOSH approved powered air purifying respirator with HE filter with NIOSH approval number prefix TC-21C.

Follow manufacturer's instructions for cleaning/maintaining PPE. If no such instructions for washables exist, use detergent and hot water. Wash the outside of gloves before removing. Keep and wash PPE separately from other laundry

USER SAFETY RECOMMENDATIONS

Users should:

- Wash hands before eating, drinking, chewing gum, using tobacco or using the toilet.
- Remove clothing/PPE immediately if pesticide gets inside. Then wash thoroughly and put on clean clothing.
- Users should remove PPE immediately after handling this product. Wash the outside of gloves before removing. As soon as possible wash thoroughly and change into clean clothing.

ENGINEERING CONTROLS

Pilots must use an enclosed cockpit in a manner that meets the requirements listed in the Worker Protection Standard (WPS) for agricultural pesticides [40 CFR170.240(d)(6)].

When applicators use closed cab equipment in a manner that meets the requirements listed in the Worker Protection Standard (WPS) for agricultural pesticides (40 CFR170.240(d) (4-6), the handler PPE requirements may be reduced or modified as specified in the WPS.

ENVIRONMENTAL HAZARDS

This pesticide is toxic to fish, aquatic invertebrates, small mammals and birds. Do not apply directly to water, or to areas where surface water is present, or to intertidal areas below the mean high water mark. Do not contaminate water when disposing of equipment washwaters or rinsate.

This product is highly toxic to bees exposed to direct treatment or residues on blooming crops or weeds. Do not apply this product or allow it to drift to blooming crops or weeds if bees are visiting the treatment area.

STORAGE AND DISPOSAL

Do not contaminate water, food or feed by storage or disposal.

Pesticide Storage: Store in original 40lb plastic bag. Do not store above 100° F for extended periods of time. If container is damaged or spill occurs, use product immediately or dispose of product and damaged container as indicated below.

Pesticide Disposal: Wastes resulting from the use of this product may be disposed of on site or at an approved waste disposal facility.

Container Handling: Nonrefillable container. Do not reuse or refill this container.

Container Disposal: Completely empty bag into application equipment, then offer for recycling if available or dispose of empty bag in a sanitary landfill or offer for recycling if available or dispose by other procedures approved by state or local authorities.

DIRECTIONS FOR USE

It is a violation of Federal Law to use this product in a manner inconsistent with its labeling.

Do not enter or allow others to enter until dusts have settled. Do not apply this product in a way that will contact workers or other persons, either directly or through drift. Only protected handlers may be in the area during application. For any requirements specific to your State or Tribe, consult the agency responsible for pesticide regulation. The maximum application rate per application is 1 lb. ai/A.

Use restrictions:

Use as a wide area/general outdoor treatment for ants and other miscellaneous pests (excludes wide-area mosquito adulticide use) is prohibited.

Endangered Species Protection Requirements:

It is a Federal offense to use any pesticide in a manner that results in an unauthorized "take" (e.g., kill or otherwise harm) of an endangered species and certain threatened species under the Endangered Species Act section 9. When using this product, you must follow the measures contained in the Endangered Species Protection Bulletin for the area in which you are applying the product. You must obtain a Bulletin no earlier than six months before using this product. To obtain Bulletins, consult <http://www.epa.gov/espp/>, call 1-844-447-3813, or email ESPP@epa.gov. You must use the Bulletin valid for the month in which you will apply the product

AGRICULTURAL USE REQUIREMENTS

Use this product only in accordance with its labeling and with the Worker Protection Standard, 40 CFR part 170. This Standard contains requirements for the protection of agricultural workers on farms, forests, nurseries, and greenhouses, and handlers of agricultural pesticides. It contains requirements for training, decontamination, notification, and emergency assistance. It also contains specific instructions and exceptions pertaining to the statements on this label about personal protective equipment (**PPE**), and restricted-entry interval. The requirements in this box only apply to uses of this product that are covered by the Worker Protection Standard.

Notify workers of the application by warning them orally and by posting warning signs at entrances to treated areas.

Do not enter or allow worker entry into treated areas during the restricted entry interval (**REI**) of 24 hours.

The PPE for early entry to treated areas is: coveralls over short sleeved shirt and short pants, Chemical-resistant gloves made of Barrier Laminate or Butyl Rubber \geq 14 mils, Chemical resistant footwear plus socks, and Chemical resistant headgear for overhead exposure.

NON-AGRICULTURAL USE REQUIREMENTS

The requirements in this box apply to uses of this product that are **NOT** within the scope of the Worker Protection Standard for agricultural pesticides (40 CFR Part 170). The WPS applies when this product is used to produce agricultural plants on farms, forests, nurseries, or greenhouses. Keep the public (including children and pets) off treated area until subsequent rainfall or irrigation has washed the bait into the soil and the area is dried.

SA-50 Chlorpyrifos 1% Mole Cricket Bait is intended for control of Mole Crickets and various other insects (which may feed on this insecticidal bait) infesting turf on golf courses, sod farms, road medians and ornamental nurseries. Do not use this product indoors.

Water Protection

- Do not apply within 25 feet of aquatic habitats (such as, but not limited to, lakes, reservoirs, rivers, permanent streams, wetlands or natural ponds, estuaries, and commercial fish farm ponds).
- Do not apply directly to, or allow the product to enter sewers or storm drains, or to any area like a drain or gutter where drainage to sewers, storm drains, water bodies, or aquatic habitat can occur.
- Do not apply directly to impervious horizontal surfaces such as sidewalks, driveways, and patios except as a spot or crack-and-crevice treatment.
- Do not apply to vertical surfaces directly above pervious or impervious surfaces that drain into ditches, storm drains, gutters, or surface waters.
- Do not apply or irrigate to the point of runoff.

Reporting Ecological Incidents: To report ecological incidents, including mortality, injury, or harm to plants and animals, call 941-722-3285.

Insect Resistance Management:

For resistance management, Chlorpyrifos 1% Mole Cricket Bait contains a Group 1B insecticide. Any insect population may contain individuals naturally resistant to Chlorpyrifos 1% Mole Cricket Bait and other Group 1B insecticides. The resistant individuals may dominate the insect population if this group of insecticides are used repeatedly in the same fields. Appropriate resistance-management strategies should be followed.

Drift Mitigation

The buffer distances specified in the below table are the distances in feet that must exist to separate sensitive sites from the targeted application site. Buffers are measured from the edge of the sensitive site to the edge of the application site.

Sensitive sites are areas frequented by non-occupational bystanders (especially children). These include residential lawns, pedestrian sidewalks, outdoor recreational areas such as school grounds, athletic fields, parks and all property associated with buildings occupied by humans for residential or commercial purposes. Sensitive sites include homes, farmworker

housing, or other residential buildings, schools, daycare centers, nursing homes, and hospitals. Nonresidential agricultural buildings, including barns, livestock facilities, sheds and outhouses are not included in this prohibition.

Required Setback (Buffer Zones) (feet)		
<u>Application rate (lb ai/A)</u>	<u>Aerial</u>	<u>Ground*</u>
>0.5 - 1	25	10
>1	Not allowed	Not allowed
* The required buffer zones for ground application apply to applications made via spreaders.		

Insects Controlled Include:

Ants (except for the fire, carpenter, harvester, and pharaoh ants), Armyworms, Billbugs, Crickets, Cutworms, Earwigs, Grasshoppers, Mole Crickets, and Sowbugs (pillbugs).

Dosage Rates	
Area To Be Treated	Pounds of Chlorpyrifos 1% Mole Cricket Bait
1,000 sq ft	2.5 pounds
5,000 sq ft	12.5 pounds
10,000 sq ft	25 pounds
1 Acre	100 pounds

Approved Uses

Applications to Turf on Golf Courses, Sod Farms and Road Medians

Apply SA-50 Chlorpyrifos 1% Mole Cricket Bait uniformly to turf on golf courses, sod farms and road medians at the rate of 2.5 pounds per 1,000 sq ft. Consult the table to determine the amount of SA-50 Chlorpyrifos 1% Mole Cricket Bait needed for a larger-sized areas. Use any hand or power-operated gravity or rotary type spreader designed for application of granular materials. To help obtain uniform distribution of SA-50 1% Mole Cricket Bait on turf, apply one-half of the required amount of product in one direction; then apply the amount remaining at a right angle.

Applications in and around Commercial Ornamental Nurseries

Apply SA-50 Chlorpyrifos 1% Mole Cricket Bait evenly over soil within and around Ornamentals being grown for commercial production in nurseries. Use the same dosage and equipment as recommended (2.5 pounds per 1,000 sq. ft.) for control of listed pests. Consult the table to determine the amount of SA-50 Chlorpyrifos 1% Mole Cricket Bait needed.

Warranty Disclaimer

To the extent consistent with applicable law, Southern Ag and Seller warrants that this product conforms to the chemical description on the label and is reasonably fit for the purposes

stated on the label when used in strict accordance with the directions, subject to the inherent risks set forth below. SOUTHERN AG AND SELLER MAKES NO OTHER EXPRESS OR IMPLIED WARRANTY OF MERCHANTABILITY OR FITNESS FOR A PARTICULAR PURPOSE OR ANY OTHER EXPRESS OR IMPLIED WARRANTY.

Inherent Risks of Use

It is impossible to eliminate all risks associated with use of this product. Plant injury, lack of performance, or other unintended consequences may result because of such factors as use of the product contrary to label instructions (including conditions noted on the label, such as unfavorable temperature, soil conditions, etc.), abnormal conditions (such as excessive rainfall, drought, tornadoes, hurricanes), presence of other materials, the manner of application, or other factors, all of which are beyond the control of Southern Ag and Seller. To the extent consistent with applicable law, all such risks shall be assumed by Buyer.

Limitation of Remedies

To the extent consistent with applicable law, the exclusive remedy for losses or damages resulting from this product (including claims based on contract, negligence, strict liability, or other legal theories), shall be limited to, at Seller's election, on of the following: 1. Refund of purchase price paid by buyer or user for product bought, or 2. Replacement of amount of product used. Manufacturer or Seller shall not be liable for losses or damages resulting from handling or use of this product unless Seller is promptly notified of such loss or damage in writing. To the extent consistent with applicable law, in no case shall Manufacturer or Seller be liable for consequential or incidental damages or losses. The terms of the "Warranty Disclaimer" above and the "Limitation of Remedies" cannot be varied by any written or verbal statements or agreements. No employee or sales agent of the Manufacturer or the seller is authorized to vary or exceed the terms of the "Warranty Disclaimer" or "Limitation of Remedies" in any manner.