

829-291

12/20/2012

4/7

UNITED STATES ENVIRONMENTAL PROTECTION AGENCY  
WASHINGTON, D.C. 20460



OFFICE OF  
CHEMICAL SAFETY AND  
POLLUTION PREVENTION

December 20, 2012

Ms. Cynthia Huffman  
Southern Agricultural Insecticides, Inc.  
P.O. Box 218  
Palmetto, FL 34220

Subject: Amended labeling to implement required spray drift mitigation measures  
Product Name: Chlorpyrifos 1% Mole Cricket Bait  
EPA Registration Number: 829-291  
Submission dated October 16, 2012; resubmission dated December 13, 2012

Dear Ms. Huffman:

The labeling referred to above, submitted in connection with registration under the Federal Insecticide, Fungicide, and Rodenticide Act, is acceptable. A stamped copy of the label is enclosed for your records. Please submit one copy of your final printed labeling before you release the product for shipment. Your release for shipment of the product constitutes acceptance of these conditions. If these conditions are not complied with, the registration will be subject to cancellation in accordance with FIFRA section 6(e). If you have any questions, please contact Julie Chao by phone at 703-308-8735, or by email at [chao.julie@epa.gov](mailto:chao.julie@epa.gov).

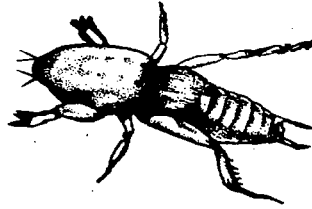
Regards,

A handwritten signature in black ink, appearing to read "Venus Eagle".

*for* Venus Eagle, Product Manager 01  
Insecticide-Rodenticide Branch  
Registration Division (7505P)

2/7

**S A SOUTHERN**  
**5 0 AG**



# CHLORPYRIFOS 1%

## MOLE CRICKET BAIT

For Control of Mole Crickets and various other listed Insects Infesting Turf on Golf Courses, Sod Farms, Road Medians and Commercial Ornamental Nurseries

**Active Ingredient:**

Chlorpyrifos: O,O-diethyl-O-(3,5,6-trichloro-2-pyridinyl)phosphorothioate .....	1.0%
Other Ingredients .....	99.0%
Total .....	100.0%

Keep Out of Reach of Children

**CAUTION**

**PRECAUTIONARY STATEMENTS**

**HAZARDS TO HUMANS AND DOMESTIC ANIMALS**

**CAUTION:** Harmful if inhaled, swallowed or absorbed through the skin. Causes moderate eye irritation. Avoid breathing dust. Avoid contact with eyes, skin or clothing.

### Southern Agricultural Insecticides, Inc.

Palmetto, Fla. 34220	Hendersonville, N.C. 28793
P.O. Box 218 Palmetto, FL 34220	Boone, N.C. 28607
941-722-3285	E.P.A. Reg. No. 829-291 EPA Est. No. 829-FL-1

**Net Weight: 40 lbs. (18.14 kg)**

ACCEPTED  
DEC 20 2012

Under the Federal Insecticide, Fungicide,  
and Rodenticide Act, as amended, for the  
pesticide registered under:

EPA. Reg. No: 829-291

**FIRST AID  
ORGANOPHOSPHATE**

**IF INHALED:** Move person to fresh air. If person is not breathing, call 911 or an ambulance, then give artificial respiration, preferably mouth-to-mouth, if possible. Call a poison control center or doctor for further treatment advice.

**IF ON SKIN or CLOTHING:** Take off contaminated clothing. Rinse skin immediately with plenty of water for 15-20 minutes. Call a poison control center or doctor for treatment advice.

**IF IN EYES:** Hold eye open and rinse slowly and gently with water for 15-20 minutes. Remove contact lenses, if present, after the first 5 minutes, then continue rinsing eye. Call a poison control center or doctor for treatment advice.

**IF SWALLOWED:** Call a poison control center or doctor immediately for treatment advice. Have person sip a glass of water if able to swallow. Do not induce vomiting unless told to do so by the poison control center or doctor. Do not give anything by mouth to an unconscious person.

**NOTE TO PHYSICIAN:** Chlorpyrifos is a cholinesterase inhibitor. Treat symptomatically. Atropine, only by injection, is the preferable antidote. Have the product container or label with you when calling a poison control center or doctor, or going for treatment.

For information on this product (including health concerns, medical emergencies, or pesticide incidents), call the **National Pesticide Information Center** at 1-800-858-7378

**PERSONAL PROTECTIVE EQUIPMENT (PPE)**

Some materials that are chemical-resistant to this product are made of any waterproof material. If you want more options, follow the instructions for category A on an EPA chemical-resistance category selection chart.

Loaders, applicators and all other handlers must wear coveralls over long-sleeved shirt and long pants.

Chemical-resistant gloves.

Chemical-resistant footwear plus socks,

A NIOSH-approved dust mist filtering respirator with MSHA/NIOSH approval number prefix TC-21C or a NIOSH-approved respirator any N,R,P, or HE filter.

Follow manufacturer's instructions for cleaning/maintaining PPE. If no such instructions for washables exist, use detergent and hot water. Wash the outside of gloves before removing. Keep and wash PPE separately from other laundry.

**USER SAFETY RECOMMENDATIONS**

Users should: wash hands before eating, drinking, chewing gum, using tobacco or using the toilet. Remove clothing/PPE immediately if pesticide gets inside. Then wash thoroughly and put on clean clothing. Users should remove PPE immediately after handling this product. Wash the outside of gloves before removing. As soon as possible wash thoroughly and change into clean clothing.

4/7

### ENGINEERING CONTROLS

Pilots must use an enclosed cockpit in a manner that meets the requirements listed in the Worker Protection Standard (WPS) for agricultural pesticides [40 CFR 170.240(d)(6)]. When applicators use closed cab equipment in a manner that meets the requirements listed in the Worker Protection Standard (WPS) for agricultural pesticides (40 CFR 170.240(d)(4-6)), the handler PPE requirements may be reduced or modified as specified in the WPS.

### ENVIRONMENTAL HAZARDS

This pesticide is toxic to fish, aquatic invertebrates, small mammals and birds. Do not apply directly to water, or to areas where surface water is present, or to intertidal areas below the mean high water mark. Do not contaminate water when disposing of equipment washwaters or rinsate.

This product is highly toxic to bees exposed to direct treatment or residues on blooming crops or weeds. Do not apply this product or allow it to drift to blooming crops or weeds if bees are visiting the treatment area.

### STORAGE AND DISPOSAL

Do not contaminate water, food or feed by storage or disposal.

**Pesticide Storage:** Store in original container. Do not store above 100° F for extended periods of time. If container is damaged or spill occurs, use product immediately or dispose of product and damaged container as indicated below.

**Pesticide Disposal:** Wastes resulting from the use of this product may be disposed of on site or at an approved waste disposal facility.

**Container Disposal:** Completely empty bag into application equipment. Then dispose of empty bag in a sanitary landfill or by incineration, or if allowed by state and local authorities, by burning. If burned, stay out of smoke.

### DIRECTIONS FOR USE

It is a violation of Federal Law to use this product in a manner inconsistent with its labeling.

#### Use Precautions and Restrictions

Do not enter or allow others to enter until dusts have settled. Do not apply this product in a way that will contact workers or other persons, either directly or through drift. Only protected handlers may be in the area during application. For any requirements specific to your State or Tribe, consult the agency responsible for pesticide regulation. The maximum application rate per application is 1 lb. ai/A.

**AGRICULTURAL USE REQUIREMENTS**

Use this product only in accordance with its labeling and with the Worker Protection Standard, 40 CFR part 170. This Standard contains requirements for the protection of agricultural workers on farms, forests, nurseries, and greenhouses, and handlers of agricultural pesticides. It contains requirements for training, decontamination, notification, and emergency assistance. It also contains specific instructions and exceptions pertaining to the statements on this label about personal protective equipment (PPE), and restricted-entry interval. The requirements in this box only apply to uses of this product that are covered by the Worker Protection Standard. Notify workers of the application by warning them orally and by posting warning signs at entrances to treated areas.

Do not enter or allow worker entry into treated areas during the restricted entry interval (REI) of 24 hours.

The PPE for early entry to treated areas is: coveralls over short sleeved shirt and short pants, Chemical resistant gloves such as or made of any waterproof material, Chemical resistant footwear plus socks, and Chemical resistant headgear for overhead exposure.

**NON-AGRICULTURAL USE REQUIREMENTS**

The requirements in this box apply to uses of this product that are **NOT** within the scope of the Worker Protection Standard for agricultural pesticides (40 CFR Part 170). The WPS applies when this product is used to produce agricultural plants on farms, forests, nurseries, or greenhouses. Keep the public (including children and pets) off treated area until subsequent rainfall or irrigation has washed the bait into the soil and the area is dried.

SA-50 Chlorpyrifos 1% Mole Cricket Bait is intended for control of Mole Crickets and various other insects (which may feed on this insecticidal bait) infesting turf on golf courses, sod farms, road medians and ornamental nurseries. Do not use this product indoors.

**Drift Mitigation**

The buffer distances specified in the below table are the distances in feet that must exist to separate sensitive sites from the targeted application site. Buffers are measured from the edge of the sensitive site to the edge of the application site.

Sensitive sites are areas frequented by non-occupational bystanders (especially children). These include residential lawns, pedestrian sidewalks, outdoor recreational areas such as school grounds, athletic fields, parks and all property associated with buildings occupied by humans for residential or commercial purposes. Sensitive sites include homes, farmworker housing, or other residential buildings, schools, daycare centers, nursing homes, and hospitals. Nonresidential agricultural buildings, including barns, livestock facilities, sheds and outhouses are not included in this prohibition.

Application rate (lb ai/A)	Required Setback (Buffer Zones) (feet)	
	Aerial	Ground*
>0.5 - 1	25	10
>1	Not allowed	Not allowed

\* The required buffer zones for ground application apply to applications made via spreaders.

**Insects Controlled Include:**

Ants (except for the fire, carpenter, harvester, and pharaoh ants), Armyworms, Billbugs, Crickets, Cutworms, Earwigs, Grasshoppers, Mole Crickets, and Sowbugs (pillbugs).

Dosage Rates	
Area To Be Treated	Pounds of Chlorpyrifos 1% Mole Cricket Bait
1,000 sq ft	2.5 pounds
5,000 sq ft	12.5 pounds
10,000 sq ft	25 pounds
1 Acre	100 pounds

**APPROVED USES**

**Applications to Turf on Golf Courses, Sod Farms and Road Medians**

Apply SA-50 Chlorpyrifos 1% Mole Cricket Bait uniformly to turf on golf courses, sod farms and road medians at the rate of 2.5 pounds per 1,000 sq ft. Consult the table to determine the amount of SA-50 Chlorpyrifos 1% Mole Cricket Bait needed for a larger-sized areas. Use any hand or power-operated gravity or rotary type spreader designed for application of granular materials. To help obtain uniform distribution of SA-50 1% Mole Cricket Bait on turf, apply one-half of the required amount of product in one direction; then apply the amount remaining at a right angle.

**Applications in and around Commercial Ornamental Nurseries**

Apply SA-50 Chlorpyrifos 1% Mole Cricket Bait evenly over soil within and around Ornamentals being grown for commercial production in nurseries. Use the same dosage and equipment as recommended (2.5 pounds per 1,000 sq. ft.) for control of listed pests. Consult the table to determine the amount of SA-50 Chlorpyrifos 1% Mole Cricket Bait needed.

**Warranty Disclaimer**

To the extent consistent with applicable law, Southern Ag and Seller warrants that this product conforms to the chemical description on the label and is reasonably fit for the purposes stated on the label when used in strict accordance with the directions, subject to the inherent risks set forth below. SOUTHERN AG AND SELLER MAKES NO OTHER EXPRESS OR IMPLIED WARRANTY OF MERCHANTABILITY OR FITNESS FOR A PARTICULAR PURPOSE OR ANY OTHER EXPRESS OR IMPLIED WARRANTY.

**Inherent Risks of Use**

It is impossible to eliminate all risks associated with use of this product. Plant injury, lack of performance, or other unintended consequences may result because of such factors as use of the product contrary to label instructions (including conditions noted on the label, such as unfavorable temperature, soil conditions, etc.), abnormal conditions (such as excessive rainfall,

drought, tornadoes, hurricanes), presence of other materials, the manner of application, or other factors, all of which are beyond the control of Southern Ag and Seller. To the extent consistent with applicable law, all such risks shall be assumed by Buyer.

**Limitation of Remedies**

To the extent consistent with applicable law, the exclusive remedy for losses or damages resulting from this product (including claims based on contract, negligence, strict liability, or other legal theories), shall be limited to, at Seller's election, on of the following: 1. Refund of purchase price paid by buyer or user for product bought, or 2. Replacement of amount of product used. Manufacturer or Seller shall not be liable for losses or damages resulting from handling or use of this product unless Seller is promptly notified of such loss or damage in writing. To the extent consistent with applicable law, in no case shall Manufacturer or Seller be liable for consequential or incidental damages or losses. The terms of the "Warranty Disclaimer" above and the "Limitation of Remedies" cannot be varied by any written or verbal statements or agreements. No employee or sales agent of the Manufacturer or the seller is authorized to vary or exceed the terms of the "Warranty Disclaimer" or "Limitation of Remedies" in any manner.