

829-291

01/26/2010

1/6

UNITED STATES ENVIRONMENTAL PROTECTION AGENCY
WASHINGTON, D.C. 20460



OFFICE OF
PREVENTION, PESTICIDES,
AND TOXIC SUBSTANCES

January 26, 2010

Cynthia Huffman
Southern Agricultural Insecticides, Inc.
P.O. Box 218
Palmetto, FL 34220

Dear Ms. Huffman:

Subject: (1) Notification of New Alternate CSF, dated 12/15/09
(2) Notification of Alternate Brand Name: SA-50 Chlorpyrifos 1% Mole Cricket Bait

The Agency is in receipt of your Application for Pesticide Notification under Pesticide Registration Notice 98-10, dated December 15, 2009, for SA-50 Dursban 1% Mole Cricket Bait, EPA Reg. No. 829-291. The Registration Division (RD) has conducted a review of this request for its applicability under PRN 98-10 and finds that the actions requested fall within the scope of PRN 98-10. The information submitted with the application has been stamped "Notification" and will be placed in our records. If you have any questions, please contact me directly at 703-308-8735 or email me at chao.julie@epa.gov.

Regards,

A handwritten signature in cursive script that reads "Julie A. Chao".

Julie A. Chao
Insecticide-Rodenticide Branch
Registration Division (7505P)

Print Form

Form Approved OMB No. 2070-0060

Please read instructions on reverse before completing form.



United States Environmental Protection Agency Washington, DC 20460

Registration Amendment Other

OP# Identifier Number

Application for Pesticide - Section I

1. Company/Product Number: 829-291
2. EPA Product Manager: Venus Eagle
3. Proposed Classification: [X] None [] Restricted
4. Company/Product (Name): SA-50 Dursban 1% Mole Cricket Bait
5. Name and Address of Applicant: Southern Agricultural Insecticides, Inc.
6. Expedited Review: [] EPA Reg. No. Product Name

Section - II

Amendment - Explain below. Resubmission in response to Agency letter dated. Notification - Explain below. Final printed labels in response to Agency letter dated. "Me Too" Application. Other - Explain below.

NOTIFICATION

Explanation: Use additional page(s) if necessary. (For section I and Section II.)

JAN 26 2010

Notification of alternate product name: SA-50 Chlorpyrifos 1% Mole Cricket Bait. Submission of CSF listing an alternate source for the active ingredient.

Section - III

1. Material This Product Will Be Packaged In: Child-Resistant Packaging, Unit Packaging, Water Soluble Packaging, 2. Type of Container, 3. Location of Net Contents Information, 4. Size(s) Retail Container, 5. Location of Label Directions, 6. Manner in Which Label is Affixed to Product

Section - IV

1. Contact Point: Cynthia Huffman, Title Registrations, Telephone No. 91-722-3281. Certification: I certify that the statements I have made on this form... 2. Signature: Cynthia Huffman, 3. Title: Registrations, 4. Typed Name: Cynthia Huffman, 5. Date: December 15, 2009, 6. Date Application Received: (Stamped)



Southern Agricultural Insecticides, Inc.

3/6

P.O. Box 218
Palmetto, FL 34220
Office: (941) 722-3285
Fax: (941) 723-2974

P.O. Box 218
Hendersonville, NC 28793
Office: (828) 692-2233
Fax: (828) 693-7554

P.O. Box 218
Boone, NC 28607
Office: (828) 264-8843
Fax: (828) 264-5236

December 15, 2009

Document Processing Desk (7504C)
Office of Pesticide Programs
U.S. Environmental Protection Agency
Ariel Rios Building
1200 Pennsylvania Ave. NW
Washington, DC 20460

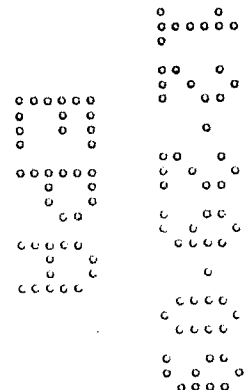
Re: 829-291
Dursban 1% Mole Cricket Bait

Enclosed please find a notification of an alternative new CSF and an alternative product name. A copy of the label bearing that name is included.

A certification statement consistent with PR Notice 98-10, section VI.A.1 is included on a separate paper.

Sincerely,

Cynthia Huffman
Cynthia Huffman
Southern Agricultural Insecticides, Inc.



Notification of alternate brand name and a new alternative CSF.

This notification is consistent with the provisions of PR Notice 98-10 and EPA regulations at 40 CFR 152.46, and no other changes have been made to the labeling or the confidential statement of formula of this product. I understand that it is a violation of 18 U.S.C. Sec. 1001 to willfully make any false statement to EPA. I further understand that if this notification is not consistent with the terms of PR Notice 98-10 and 40 CFR 152.46, this product may be in violation of FIFRA and I may be subject to enforcement action and penalties under sections 12 and 14 of FIFRA.

Cynthia Heyman
Signature

12/15/09
Date

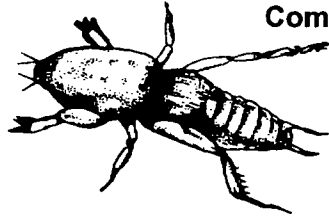
5/6

S A SOUTHERN
5 0 AG®

CHLORPYRIFOS 1%

MOLE CRICKET BAIT

For Control of Mole Crickets and various other listed Insects
Infesting Turf on Golf Courses, Sod Farms, Road Medians and
Commercial Ornamental Nurseries



NOTIFICATION

JAN 26 2010

Active Ingredient:

Chlorpyrifos: O,O-diethyl-O-(3,5,6-trichloro-2-pyridinyl)phosphorothioate	1.0%
Inert Ingredients	99.0%
Total	100.0%

Keep Out of Reach of Children

CAUTION

PRECAUTIONARY STATEMENTS

HAZARDS TO HUMANS AND DOMESTIC ANIMALS

CAUTION: Harmful if inhaled, swallowed or absorbed through the skin. Causes moderate eye irritation. Avoid breathing dust. Avoid contact with eyes, skin or clothing.

PERSONAL PROTECTIVE EQUIPMENT (PPE)

Some materials that are chemical-resistant to this product are made of any waterproof material. If you want more options, follow the instructions for category A on an EPA chemical-resistance category selection chart. Loaders, applicators and all other handlers must wear coveralls over long-sleeved shirt and long pants.

Chemical-resistant gloves.

Chemical-resistant footwear plus socks.

A NIOSH-approved dust mist filtering respirator with MSHA/NIOSH approval number prefix TC-21C or a NIOSH-approved respirator any N,R,P, or HE filter.

Follow manufacturer's instructions for cleaning/maintaining PPE. If no such instructions for washables exist, use detergent and hot water. Wash the outside of gloves before removing. Keep and wash PPE separately from other laundry.

USER SAFETY RECOMMENDATIONS

Users should: wash hands before eating, drinking, chewing gum, using tobacco or using the toilet. Remove clothing/PPE immediately if pesticide gets inside. Then wash thoroughly and put on clean clothing. Users should remove PPE immediately after handling this product. Wash the outside of gloves before removing. As soon as possible wash thoroughly and change into clean clothing.

ENGINEERING CONTROLS

Pilots must use an enclosed cockpit in a manner that meets the requirements listed in the Worker Protection Standard (WPS) for agricultural pesticides [40 CFR 170.240(d)(6)].

When applicators use closed cab equipment in a manner that meets the requirements listed in the Worker Protection Standard (WPS) for agricultural pesticides (40 CFR 170.240(d)(4-6), the handler PPE requirements may be reduced or modified as specified in the WPS.

ENVIRONMENTAL HAZARDS

This pesticide is toxic to fish, aquatic invertebrates, small mammals and birds. Do not apply directly to water, or to areas where surface water is present, or to intertidal areas below the mean high water mark. Do not contaminate water when disposing of equipment washwaters or rinsate. This product is highly toxic to bees exposed to direct treatment or residues on blooming crops or weeds. Do not apply this product or allow it to drift to blooming crops or weeds if bees are visiting the treatment area.

FIRST AID

ORGANOPHOSPHATE

IF INHALED: Move person to fresh air. If person is not breathing, call 911 or an ambulance, then give artificial respiration, preferably mouth-to-mouth, if possible. Call a poison control center or doctor for further treatment advice.

IF ON SKIN or CLOTHING: Take off contaminated clothing. Rinse skin immediately with plenty of water for 15-20 minutes. Call a poison control center or doctor for treatment advice.

IF IN EYES: Hold eye open and rinse slowly and gently with water for 15-20 minutes. Remove contact lenses, if present, after the first 5 minutes, then continue rinsing eye. Call a poison control center or doctor for treatment advice.

IF SWALLOWED: Call a poison control center or doctor immediately for treatment advice. Have person sip a glass of water if able to swallow. Do not induce vomiting unless told to do so by the poison control center or doctor. Do not give anything by mouth to an unconscious person.

NOTE TO PHYSICIAN: Chlorpyrifos is a cholinesterase inhibitor. Treat symptomatically. Atropine, only by injection, is the preferable antidote.

Have the product container or label with you when calling a poison control center or doctor, or going for treatment.

For information on this product (including health concerns, medical emergencies, or pesticide incidents), call the National Pesticide Information Center at 1-800-858-7378

Southern Agricultural Insecticides, Inc.

Palmetto, Fla. 34220 Hendersonville, N.C. 28793 Boone, N.C. 28607
P.O. Box 218 Palmetto, FL 34220 E.P.A. Reg. No. 829-291 EPA Est. No. 829-FL-1
941-722-3285 J3

Net Weight: 40 lbs. (18.14 kg)

4/6

STORAGE AND DISPOSAL

Do not contaminate water, food or feed by storage or disposal. **Pesticide Storage:** Store in original container. Do not store above 100°F for extended periods of time. If container is damaged or spill occurs, use product immediately or dispose of product and damaged container as indicated below. **Pesticide Disposal:** Wastes resulting from the use of this product may be disposed of on site or at an approved waste disposal facility. **Container Disposal:** Completely empty bag into application equipment. Then dispose of empty bag in a sanitary landfill or by incineration, or if allowed by state and local authorities, by burning. If burned, stay out of smoke.

DIRECTIONS FOR USE

It is a violation of Federal Law to use this product in a manner inconsistent with its labeling.

Use Precautions and Restrictions

Do not enter or allow others to enter until dusts have settled. Do not apply this product in a way that will contact workers or other persons, either directly or through drift. Only protected handlers may be in the area during application. For any requirements specific to your State or Tribe, consult the agency responsible for pesticide regulation. The maximum application rate per application is 1 lb. a/A.

AGRICULTURAL USE REQUIREMENTS

Use this product only in accordance with its labeling and with the Worker Protection Standard, 40 CFR part 170. This Standard contains requirements for the protection of agricultural workers on farms, forests, nurseries, and greenhouses, and handlers of agricultural pesticides. It contains requirements for training, decontamination, notification, and emergency assistance. It also contains specific instructions and exceptions pertaining to the statements on this label about personal protective equipment (PPE), and restricted-entry interval. The requirements in this box only apply to uses of this product that are covered by the Worker Protection Standard.

Notify workers of the application by warning them orally and by posting warning signs at entrances to treated areas.

Do not enter or allow worker entry into treated areas during the restricted entry interval (REI) of 24 hours.

The PPE for early entry to treated areas is: coveralls over short sleeved shirt and short pants, Chemical resistant gloves such as or made of any waterproof material, Chemical resistant footwear plus socks, and chemical resistant headgear for overhead exposure.

NON-AGRICULTURAL USE REQUIREMENTS

The requirements in this box apply to uses of this product that are NOT within the scope of the Worker Protection Standard for agricultural pesticides (40 CFR Part 170). The WPS applies when this product is used to produce agricultural plants on farms, forests, nurseries, or greenhouses. Keep the public (including children and pets) off treated area until subsequent rainfall or irrigation has washed the bait into the soil and the area is dried.

SA-50 Chlorpyrifos 1% Mole Cricket Bait is intended for control of Mole Crickets and various other insects (which may feed on this insecticidal bait) infesting turf on golf courses, sod farms, road medians and ornamental nurseries. Do not use this product indoors.

Insects Controlled Include:

Ants (except for the fire, carpenter, harvester, and pharaoh ants), Armyworms, Billbugs, Crickets, Cutworms, Earwigs, Grasshoppers, Mole Crickets, and Sowbugs (pillbugs)

Dosage Rates

Area To Be Treated	Pounds of Chlorpyrifos 1% Mole Cricket Bait
1,000 sq ft	2.5 pounds
5,000 sq ft	12.5 pounds
10,000 sq ft	25 pounds
1 Acre	100 pounds

APPROVED USES

Applications to Turf on Golf Courses, Sod Farms and Road Medians

Apply SA-50 Chlorpyrifos 1% Mole Cricket Bait uniformly to turf on golf courses, sod farms and road medians at the rate of 2.5 pounds per 1,000 sq ft. Consult the table to determine the amount of SA-50 Chlorpyrifos 1% Mole Cricket Bait needed for a larger-sized areas. Use any hand or power-operated gravity or rotary type spreader designed for application of granular materials. To help obtain uniform distribution of SA-50 1% Mole Cricket Bait on turf, apply one-half of the required amount of product in one direction; then apply the amount remaining at a right angle.

Applications in and around Commercial Ornamental Nurseries

Apply SA-50 Chlorpyrifos 1% Mole Cricket Bait evenly over soil within and around Ornamentals being grown for commercial production in nurseries. Use the same dosage and equipment as recommended (2.5 pounds per 1,000 sq ft.) for control of listed pests. Consult the table to determine the amount of SA-50 Chlorpyrifos 1% Mole Cricket Bait needed.

Warranty Disclaimer

To the extent consistent with applicable law, Southern Ag and Seller warrants that this product conforms to the chemical description on the label and is reasonably fit for the purposes stated on the label when used in strict accordance with the directions, subject to the inherent risks set forth below. SOUTHERNAG AND SELLER MAKES NO OTHER EXPRESS OR IMPLIED WARRANTY OF MERCHANTABILITY OR FITNESS FOR A PARTICULAR PURPOSE OR ANY OTHER EXPRESS OR IMPLIED WARRANTY.

Inherent Risks of Use

It is impossible to eliminate all risks associated with use of this product. Plant injury, lack of performance, or other unintended consequences may result because of such factors as use of the product contrary to label instructions (including conditions noted on the label, such as unfavorable temperature, soil conditions, etc.), abnormal conditions (such as excessive rainfall, drought, tornadoes, hurricanes), presence of other materials, the manner of application, or other factors, all of which are beyond the control of Southern Ag and Seller. To the extent consistent with applicable law, all such risks shall be assumed by Buyer.

Limitation of Remedies

To the extent consistent with applicable law, the exclusive remedy for losses or damages resulting from this product (including claims based on contract, negligence, strict liability, or other legal theories), shall be limited to, at Seller's election, on of the following: 1. Refund of purchase price paid by buyer or user for product bought, or 2. Replacement of amount of product used. Manufacturer or Seller shall not be liable for losses or damages resulting from handling or use of this product unless Seller is promptly notified of such loss or damage in writing. To the extent consistent with applicable law, in no case shall Manufacturer or Seller be liable for consequential or incidental damages or losses. The terms of the "Warranty Disclaimer" above and the "Limitation of Remedies" cannot be varied by any written or verbal statements or agreements. No employee or sales agent of the Manufacturer or the seller is authorized to vary or exceed the terms of the "Warranty Disclaimer" or "Limitation of Remedies" in any manner.