



U.S. ENVIRONMENTAL PROTECTION AGENCY

Office of Pesticide Programs
 Registration Division (7505P)
 Ariel Rios Building
 1200 Pennsylvania Ave., NW
 Washington, D.C. 20460

EPA Reg. Number:

829-291

Date of Issuance:

DEC 4 2007

NOTICE OF PESTICIDE:

Registration
 Reregistration
 (under FIFRA, as amended)

Term of Issuance: Unconditional

Name of Pesticide Product:

SA-50 Dursban 1% Mole
Cricket Bait

Name and Address of Registrant (include ZIP Code):

Southern Agricultural Insecticides, Inc.
 P.O. Box 218
 Palmetto, FL 34220

Note: Changes in labeling differing in substance from that accepted in connection with this registration must be submitted to and accepted by the Registration Division prior to use of the label in commerce. In any correspondence on this product always refer to the above EPA registration number.

On the basis of information furnished by the registrant, the above named pesticide is hereby registered/reregistered under the Federal Insecticide, Fungicide and Rodenticide Act. Registration is in no way to be construed as an endorsement or recommendation of this product by the Agency. In order to protect health and the environment, the Administrator, on his motion, may at any time suspend or cancel the registration of a pesticide in accordance with the Act. The acceptance of any name in connection with the registration of a product under this Act is not to be construed as giving the registrant a right to exclusive use of the name or to its use if it has been covered by others.

Based on your response to the Reregistration Eligibility Decision, EPA has reregistered the product listed above. This action is taken under the authority of section 4(g)(2)(C) of the Federal Insecticide, Fungicide, and Rodenticide Act, as amended. Reregistration under this section does not eliminate the need for continual reassessment of pesticides. EPA may require submission of data at any time to maintain the registration of your product.

Generic data requirements that have been identified in the RED as confirmatory data for the active ingredient contained in the subject product will continue to be tracked and assessed in the Agency's continual reassessment of pesticides.

The labeling referred to above, submitted in connection with registration under the Federal Insecticide, Fungicide and Rodenticide Act (FIFRA), as amended, is acceptable with the following comments:

Please see page 2 for label comments

You must submit one (1) copy of the final printed label before you release the product for shipment. Products shipped after 12 months from the date of this Notice or the next printing of the label whichever occurs first, must bear the new revised label. A stamped copy of the label is enclosed for your records. Should you have any questions, please contact Julie Chao at 703-308-8735 or chao.julie@epa.gov.

Signature of Approving Official:

Meredith F. Laws, Chief
 Insecticide-Rodenticide Branch
 Registration Division (7505P)

Date:

DEC 4 2007

Label Comments:

- On page 1, add the entire company address, including phone number.
- On page 1, immediately following the Personal Protective Equipment (PPE) heading, add the following text:
“Some materials that are chemical-resistant to this product are made of any waterproof material. If you want more options, follow the instructions for category A on an EPA chemical-resistance category selection chart.”
- On page 1, under the PPE section, correct the typo in the following sentence: “If no such instructions for washables exist...” (Currently reads, “If **not** such instructions...”)
- On page 1, under the User Safety Recommendations, insert the following statement before the last sentence: **“Users should remove PPE immediately after handling this product. Wash the outside of gloves before removing. As soon as possible...”**
- On page 1, under Environmental Hazards, add the following statement: **“This product is highly toxic to bees exposed to direct treatment or residues on blooming crops or weeds. Do not apply this product or allow it to drift to blooming crops or weeds if bees are visiting the treatment area.”**
- On page 1, below the First Aid section, modify the second statement so it reads, “For more information on this product (including health concerns, medical emergencies, or pesticide incidents), call the **National Pesticide Information Center** at: 1-800-858-7378.”
- The following text must be added to the label, immediately following the User Safety Recommendations:

Engineering Controls

Pilots must use an enclosed cockpit in a manner that meets the requirements listed in the Worker Protection Standard (WPS) for agricultural pesticides [40 CFR 170.240(d)(6)].

When applicators use closed cab equipment in a manner that meets the requirements listed in the Worker Protection Standard (WPS) for agricultural pesticides (40 CFR 170.240(d)(4-6), the handler PPE requirements may be reduced or modified as specified in the WPS.”

- On page 2, under Agricultural Use Requirements, add the following statement after the first paragraph: **“Notify workers of the application by warning them orally and by posting warning signs at entrances to treated areas.”**

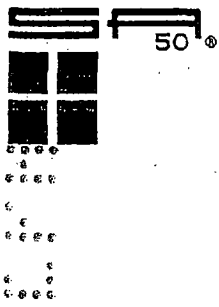
- On page 2, under the Agricultural Use Requirements, the early entry PPE paragraph should be revised to read:

“The PPE for early entry to treated areas is:

- **Coveralls over short sleeved shirt and short pants,**
- **Chemical resistant gloves such as or made of any waterproof material,**
- **Chemical resistant footwear plus socks, and**
- **Chemical resistant headgear for overhead exposure.”**

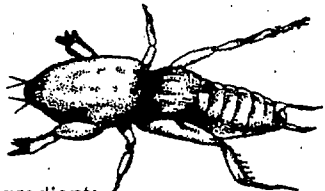
- On page 2, delete the heading “General Information.”
- On page 2, for “ants,” **exclude fire, carpenter, harvester, and pharaoh ants from the control claim** (i.e., Controls ants, except for fire, carpenter, harvester, and pharaoh ants).” These four ant species require additional efficacy data.
- On page 2, under the Warranty Disclaimer, modify the second sentence so it reads, **“To the extent consistent with applicable law, Southern Ag and Seller make no other express or implied warranty...”**
- On page 2, under Inherent Risks of Use, modify the last sentence so it reads, **“To the extent consistent with applicable law, all such risks shall be assumed by Buyer.”**
- On page 2, under the Limitation of Remedies, modify the first sentence so it reads, **“To the extent consistent with applicable law, the exclusive remedy for losses or damages resulting from this product...”**
- On page 2, under the Limitation of Remedies, modify the third sentence so it reads, **“To the extent consistent with applicable law, in no case shall Manufacturer or Seller be liable for consequential or incidental damages or losses.”**

4 7 5



DURSBAN* 1% MOLE CRICKET BAIT

For Control of Mole Crickets and various other listed Insects
Infesting Turf on Golf Courses, Sod Farms, Road Medians and
Commercial Ornamental Nurseries



Active Ingredient:
Chlorpyrifos: O,O-diethyl-O-(3,5,6-trichloro-
2-pyridinyl)phosphorothioate 1.0%
Inert Ingredients 99.0%
Total 100.0%
*Trademark of Dow AgroSciences

Keep Out of Reach of Children
CAUTION

PRECAUTIONARY STATEMENTS

HAZARDS TO HUMANS AND DOMESTIC ANIMALS
CAUTION: Harmful if inhaled, swallowed or absorbed through the skin. Causes moderate eye irritation. Avoid breathing dust. Avoid contact with eyes, skin or clothing.
PERSONAL PROTECTIVE EQUIPMENT (PPE)
Loaders, applicators and all other handlers must wear coveralls over long-sleeved shirt and long pants.
Chemical-resistant gloves.
Chemical-resistant footwear plus socks.
A NIOSH-approved dust mist filtering respirator with MSHA/NIOSH approval number prefix TC-21C or a NIOSH-approved respirator approved for HE filter.
Follow manufacturer's instructions for cleaning/maintaining PPE. If not such instructions for washables exist: Use detergent and hot water. Keep and wash PPE separately from other laundry.

USER SAFETY RECOMMENDATIONS

Users should: wash hands before eating, drinking, chewing gum, using tobacco or using the toilet. Remove clothing/PPE immediately if pesticide gets inside. Then wash thoroughly and put on clean clothing. As soon as possible wash thoroughly and change into clean clothing.

ENVIRONMENTAL HAZARDS

This pesticide is toxic to fish, aquatic invertebrates, small mammals and birds. Do not apply directly to water, or to areas where surface water is present, or to intertidal areas below the mean high water mark. Do not contaminate water when disposing of equipment washwaters or rinsate.

FIRST AID ORGANOPHOSPHATE

IF INHALED: Move person to fresh air. If person is not breathing, call 911 or an ambulance, then give artificial respiration, preferably mouth-to-mouth, if possible. Call a poison control center or doctor for further treatment advice.
IF ON SKIN OR CLOTHING: Take off contaminated clothing. Rinse skin immediately with plenty of water for 15-20 minutes. Call a poison control center or doctor for treatment advice.
IF IN EYES: Hold eye open and rinse slowly and gently with water for 15-20 minutes. Remove contact lenses, if present, after the first 5 minutes, then continue rinsing eye. Call a poison control center or doctor for treatment advice.
IF SWALLOWED: Call a poison control center or doctor immediately for treatment advice. Have person sip a glass of water if able to swallow. Do not induce vomiting unless told to do so by the poison control center or doctor. Do not give anything by mouth to an unconscious person.
NOTE TO PHYSICIAN: Chlorpyrifos is a cholinesterase inhibitor. Treat symptomatically. Atropine, only by injection, is the preferable antidote.

Have the product container or label with you when calling a poison control center or doctor, or going for treatment.

For information on this pesticide product (including health concerns, medical emergencies, or pesticide incidents), call the National Pesticide Telecommunications Network at 1-800-858-7378

STORAGE AND DISPOSAL

Do not contaminate water, food or feed by storage or disposal. **Pesticide Storage:** Store in original container. Do not store above 100°F for extended periods of time. If container is damaged or spill occurs, use product immediately or dispose of product and damaged container as indicated below. **Pesticide Disposal:** Wastes resulting from the use of this product may be disposed of on site or at an approved waste disposal facility. **Container Disposal:** Completely empty bag into application equipment. Then dispose of empty bag in a sanitary landfill or by incineration, or if allowed by state and local authorities, by burning. If burned, stay out of smoke.

ACCEPTED
with COMMENTS
In EPA Letter Dated:
DEC 4 2007

Under the Federal Insecticide,
Fungicide, and Rodenticide Act,
as amended, for the pesticide
registered under EPA Reg. No.
829-291

Southern Agricultural Insecticides, Inc.

Palmetto, Fla. 34220 Hendersonville, N.C. 28793 Boone, N.C. 28607
E.P.A. Reg. No. 829-291 J2 EPA Est. No. 829-FL-1

Net Weight: 40 lbs. (18.14 kg)

DIRECTIONS FOR USE

It is a violation of Federal Law to use this product in a manner inconsistent with its labeling.

Use Precautions and Restrictions

Do not enter or allow others to enter until dusts have settled. Do not apply this product in a way that will contact workers or other persons, either directly or through drift. Only protected handlers may be in the area during application. For any requirements specific to your State or Tribe, consult the agency responsible for pesticide regulation. The maximum application rate per application is 1 lb. ai/A.

AGRICULTURAL USE REQUIREMENTS

Use this product only in accordance with its labeling and with the Worker Protection Standard, 40 CFR part 170. This Standard contains requirements for the protection of agricultural workers on farms, forests, nurseries, and greenhouses, and handlers of agricultural pesticides. It contains requirements for training, decontamination, notification, and emergency assistance. It also contains specific instructions and exceptions pertaining to the statements on this label about personal protective equipment (PPE), and restricted-entry interval. The requirements in this box only apply to uses of this product that are covered by the Worker Protection Standard. Do not enter or allow worker entry into treated areas during the restricted entry interval (REI) of 24 hours. PPE required for early entry to treated areas that is permitted under the Worker Protection Standard and that involves contact with anything that has been treated, such as plants, soil, or water, is: coveralls, waterproof gloves, and shoes plus socks.

NON-AGRICULTURAL USE REQUIREMENTS

The requirements in this box apply to uses of this product that are NOT within the scope of the Worker Protection Standard for agricultural pesticides (40 CFR Part 170). The WPS applies when this product is used to produce agricultural plants on farms, forests, nurseries, or greenhouses. Keep the public (including children and pets) off treated area until subsequent rainfall or irrigation has washed the bait into the soil and the area is dried.

GENERAL INFORMATION

SA-50 Dursban® 1% Mole Cricket Bait is intended for control of Mole Crickets and various other insects (which may feed on this insecticidal bait) infesting turf on golf courses, sod farms, road medians and ornamental nurseries. Do not use this product indoors.

Insects Controlled include:

Ants, Armyworms, Billbugs, Crickets, Cutworms, Earwigs, Grasshoppers, Mole Crickets, and Sowbugs (pillbugs)

Dosage Rates

Area To Be Treated	Pounds of Dursban 1% Mole Cricket Bait
1,000 sq ft	2.5 pounds
5,000 sq ft	12.5 pounds
10,000 sq ft	25 pounds
1 Acre	100 pounds

APPROVED USES

Applications to Turf on Golf Courses, Sod Farms and Road Medians

Apply SA-50 Dursban® 1% Mole Cricket Bait uniformly to turf on golf courses, sod farms and road medians at the rate of 2.5 pounds per 1,000 sq ft. Consult the table to determine the amount of SA-50 Dursban® 1% Mole Cricket Bait needed for a larger-sized areas. Use any hand or power-operated gravity or rotary type spreader designed for application of granular materials. To help obtain uniform distribution of SA-50 Dursban® 1% Mole Cricket Bait on turf, apply one-half of the required amount of product in one direction; then apply the amount remaining at a right angle.

Applications in and around Commercial Ornamental Nurseries

Apply SA-50 Dursban® 1% Mole Cricket Bait evenly over soil within and around Ornamentals being grown for commercial production in nurseries. Use the same dosage and equipment as recommended (2.5 pounds per 1,000 sq. ft.) for control of listed pests. Consult the table to determine the amount of SA-50 Dursban® 1% Mole Cricket Bait needed.

Warranty Disclaimer

Southern Ag and Seller warrants that this product conforms to the chemical description on the label and is reasonably fit for the purposes stated on the label when used in strict accordance with the directions, subject to the inherent risks set forth below. SOUTHERN AG AND SELLER MAKES NO OTHER EXPRESS OR IMPLIED WARRANTY OF MERCHANTABILITY OR FITNESS FOR A PARTICULAR PURPOSE OR ANY OTHER EXPRESS OR IMPLIED WARRANTY.

Inherent Risks of Use

It is impossible to eliminate all risks associated with use of this product. Plant injury, lack of performance, or other unintended consequences may result because of such factors as use of the product contrary to label instructions (including conditions noted on the label, such as unfavorable temperature, soil conditions, etc.), abnormal conditions (such as excessive rainfall, drought, tornadoes, hurricanes), presence of other materials, the manner of application, or other factors, all of which are beyond the control of Southern Ag and Seller. All such risks shall be assumed by Buyer.

Limitation of Remedies

The exclusive remedy for losses or damages resulting from this product (including claims based on contract, negligence, strict liability, or other legal theories), shall be limited to, at Seller's election, on of the following:

1. Refund of purchase price paid by buyer or user for product bought, or 2. Replacement of amount of product used.
- Manufacturer or Seller shall not be liable for losses or damages resulting from handling or use of this product unless Seller is promptly notified of such loss or damage in writing. In no case shall Manufacturer or Seller be liable for consequential or incidental damages or losses. The terms of the "Warranty Disclaimer" above and the "Limitation of Remedies" cannot be varied by any written or verbal statements or agreements. No employee or sales agent of the Manufacturer or the seller is authorized to vary or exceed the terms of the "Warranty Disclaimer" or "Limitation of Remedies" in any manner.