

829-287

6/22/2012

1097



UNITED STATES ENVIRONMENTAL PROTECTION AGENCY  
WASHINGTON D C 20460

OFFICE OF CHEMICAL SAFETY  
AND POLLUTION PREVENTION

Ms Cynthia Huffman  
Southern Agricultural Insecticides Inc  
P O Box 218  
Palmetto FL 34220

JUN 22 2012

Subject Product Name SA 50 Liquid Ornamental and Vegetable Flowable Fungicide  
EPA Reg No 829 287  
Submission date 5/8/2012  
Label Amendment Reinstate Precautionary statements between Hazards to  
Domestic Animals and First Aid omitted on 11/5/09 notification  
Decision Number 465310

Dear Registrant

The amended label referred to above submitted in connection with registration under the Federal Insecticide Fungicide and Rodenticide Act as amended is acceptable providing a final printed label is submitted with the following changes

- On page 4 in Ornamental Conifers add Do not apply to forests
- On page 5 in the cabbage carrot and corn application directions change Repeat 7 10 day intervals to Repeat at 8 10 day intervals

One copy of the label stamped Accepted with comments is enclosed for your records This label supersedes all labels previously accepted for this product Please submit one copy of the final printed label before the product is released for shipment

If you have questions concerning this letter please call Banza Djapao at 703 305 7269 or via email at djapao banza@epa gov or you may call me at 703 308 9443

Sincerely

A handwritten signature in black ink that reads "Banza Djapao for".

Tony Kish  
Product Manager 22  
Fungicide Branch  
Registration Division (7504P)



# LIQUID ORNAMENTAL and VEGETABLE FLOWABLE FUNGICIDE

Contains  
Daconil

NOT FOR USE ON PLANTS BEING GROWN FOR SALE OR OTHER  
COMMERCIAL PURPOSES USE OR FOR COMMERCIAL SEED

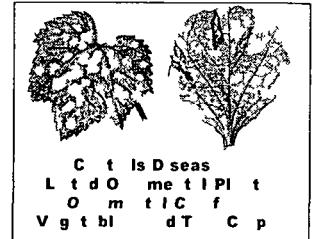
**Active ingredient**

Chlorothalonil (tetrachloroisophthalonitrile) 12.50 %

**Inert ingredients** 87.50 %

**Total** 100.00 %

Daconil<sup>®</sup> is a registered trademark of Syngenta



## KEEP OUT OF REACH OF CHILDREN CAUTION

**SHAKE WELL BEFORE USING** Read entire label and use as directed

Apply only to plants specified on this label Do not apply to plants not listed on this label

Do not combine this product with pesticides surfactants or fertilizers unless prior use has shown the combination compatible

PRECAUTIONARY STATEMENTS AND THE SPECIFIC DIRECTIONS FOR USE OF THIS PRODUCT ARE LOCATED INSIDE OF LABEL FOLLOW DIRECTIONS ON SIDE OF LABEL TO OPEN

For information on this pesticide product (including health concerns medical emergencies or pesticide incidents) call the National Pesticide Telecommunications Network at 1 800 858 7378 Have product container or label with you when calling a poison control center or doctor or going for treatment

### Southern Agricultural Insecticides, Inc

PALMETTO FL 34220  
EPA Reg No 829 287

HENDERSONVILLE N C 28793

BOONE N C

EPA Est No 829 FL 1

**Net Contents Liquid 1 Pt , Qt , Gl**



0 51538 06824 6

ACCEPTED  
with COMMENTS  
JUN 22 2012  
EPA Letter Dated

Under the Federal Insecticide,  
Fungicide, and Rodenticide Act  
as amended, for the pesticide  
registered under EPA Reg No  
829-287

**PRECAUTIONARY STATEMENTS  
HAZARDS TO HUMANS AND DOMESTIC ANIMALS**

**CAUTION** Causes moderate eye irritation. Avoid contact with eyes, skin, or clothing. Wash thoroughly with soap and water after handling. Prolonged or frequently repeated skin contact may cause allergic reaction in some individuals. Wash hands before eating, drinking, chewing gum, using tobacco, or using the toilet.

**FIRST AID**

**If In Eyes** Hold eye open and rinse slowly and gently with water for 15-20 minutes. Remove contact lenses if present after the first 5 minutes. Then continue rinsing eye. Call a poison control center or doctor for treatment advice. **If Swallowed** Call a poison control center or doctor immediately for treatment advice. Have person sip a glass of water if able to swallow. Do not induce vomiting unless told to do so by a poison control center or doctor. Do not give anything by mouth to an unconscious person. **If Inhaled** Move person to fresh air. If person is not breathing, call 911 or an ambulance, then give artificial respiration, preferably mouth-to-mouth if possible. Call a poison control center or doctor for further treatment advice.

**Note to Physician** Affected persons respond to treatment with antihistamines or steroid creams and/or systemic steroids.

**NOTE TO USER** Wear long sleeve shirt, long pants, gloves and goggles or face shield while mixing and applying this product. Keep unprotected persons and animals out of treatment area until spray has completely dried.

**ENVIRONMENTAL HAZARDS**

This product is toxic to fish, aquatic invertebrates, and marine/estuarine organisms. Run off from treated areas may be hazardous to aquatic organisms in neighboring areas. To protect the environment, do not allow pesticide to enter or run off into storm drains, drainage ditches, gutters, or surface waters. Applying this product in calm weather when rain is not predicted for the next 24 hours will help to ensure that wind or rain does not blow or wash pesticide off the treatment area. Sweeping any product that lands on a driveway, sidewalk, or street back onto the treated area of the lawn or garden will help to prevent run off to water bodies or drainage systems. Do not apply when weather conditions favor drift from treated areas.

**DIRECTIONS FOR USE**

It is a violation of Federal law to use this product in a manner inconsistent with its labeling.

**GENERAL PRECAUTIONS AND RESTRICTIONS**

It is a violation of Federal law to use this product in a manner inconsistent with its labeling. DO NOT allow people or pets to enter treated areas until sprays have dried or dusts have settled. DO NOT apply this product in a way that will contact other persons or pets, either directly or through drift. DO NOT combine this product in the spray tank with other pesticides, surfactants, or fertilizers unless your prior use has shown the combination physically compatible, effective, and non-injurious under your conditions of use. The use of spray stickers or other spray adjuvants is not recommended with this product.

Before opening, slowly invert this container several times to assure uniform mixture. Slowly add the required amount of this product to the spray tank while filling. Agitate and continue to agitate while using.

For handy reference: 1 oz liquid = 2 Tablespoonfuls (TBS) = 6 teaspoonfuls (tsp)

**APPLICATIONS INSTRUCTIONS**

Do not use on home lawns and turf sites associated with apartment buildings, daycare centers, playgrounds, playfields, recreational park, athletic fields, athletic fields located on or next to schools (i.e. elementary, middle and high schools), campgrounds, churches, and theme parks.

**ORNAMENTAL PLANTS**

Apply this fungicide at the rate of 2 1/2 Tablespoonfuls (2 Tablespoonfuls for roses) per gallon of water to cover 350 sq ft Apply the spray to run off when conditions are favorable for disease development Repeat applications at 7 to 14 day intervals until conditions are no longer favorable During periods when conditions favor severe disease incidence generally cloudy wet weather apply at one week intervals Apply to plants when foliage and flowers are dry or nearly dry

Use of this product is recommended for the control of fungal diseases referred to by numbers in parentheses following each ornamental Ornamentals listed on this label have been tested and found to tolerate applications of chlorothalonil (the active ingredient in this product) at the recommended rates The user should test for possible phytotoxic responses using recommended rates on ornamental plants on a small area prior to extensive use Applications to bloom may damage flowers and/or fruits

**FRUITS AND OTHER STRUCTURES WHICH ARE BORNE ON TREATED PLANTS MUST NOT BE EATEN** unless directions for use on the specific food plant are followed as given in the vegetable and fruit sections of this label Do not feed treated plant parts to livestock Do not apply more than 27 applications per growing season (year)

**ORNAMENTALS RECOMMENDED FOR TREATMENT WITH THIS FLOWABLE FUNGICIDE**

**BROADLEAF SHRUBS AND TREES**

Andromeda(Pieris)(4) Ash(Fraxinus)(1) Aspen(1) Azalea(1 2 4) Buckeye(horsechestnut)(1) Cherry Laurel(1) Crabapple(1 6 8) Dogwood(1) Eucalyptus(3) Euonymus(1) Firethorn(Pyraecantha)(1) Flowering Almond(1 2) Flowering Cherry(1 2) Flowering Peach(1 2) Flowering Plum(1 2) Flowering Quince(1 2) Hawthorn(1 6) Holly (1) Lilac(5) Magnolia Maple(1) Mountain Laurel(1) Oak(Red group only)(1 7) Oregon Grape(Mahonia)(6) Photinia(1) Poplar(1) Privet(ligustrum)(1) Rhododendron(1 2 4) Sand Cherry(1 2) Sequoia(1) Spiraea(1) Sycamore Planetree(1) Viburnum(5) Walnut(Juglans)(1)

**FLOWERING PLANTS AND BULBS**

**(Avoid applications during bloom period on plants where flower injury is unacceptable )**

Arabian Violet (2) Begonia (1) Camellia (2) Carnation (1 2) Chrysanthemum (1 2) Crocus (1) Daffodil (1) Daisy (1) Geranium (1 6) Gladiolus (1 2) Hollyhock (6) Hydrangea (Foliage only)(1 6) Iris (1 2) Lily (1) Marigold (1) Narcissus (1) Pansy (1) Petunia (1 4) Phlox (1) Poinsettia (1) Discontinue applications to poinsettia prior to bract formation phytotoxicity is possible on the bracts Rose (1) Statice (1) Tulip (1) Zinnia (1 5) Do not apply more than 30 applications per season (year)

**FOLIAGE PLANTS**

Aglaonema(1) Areca palm(1) Artemesia(1) Boston fern(1) Dumbcane(Diffenbachia)(1) Dracaena(1) Fatsia(Aralia)(1) Ficus(1) Florida Ruffle Fern(1) Leatherleaf Fern(1) Lipstick plant(1) Ming aralia(1) Oyster plant(Rhoeo)(1) Parlor palm Chamaedorea(1) Peperomia(1) Philodendron(1 4) Prayer plant(Marganta)(1) Syngonium(1) Zebra plant(Aphelandra)(1)

**DISEASES CONTROLLED WITH THIS FLOWABLE FUNGICIDE**

**(1) LEAF SPOTS/FOLIAR BLIGHTS**

Actinopelte leafspot	Alternaria leafspot/leaf blight	Anthrachnose leaf blotch spot
Anthrachnose(Discula)blight	Ascochyta blight	Bipolaris(Helminthosporium leaf spot)
Botrytis leafspot leaf blight	Cephalosporium leaf spot	Cercospora leaf spot
Cercosporidium leafspot	Coryneum blight (shothole)	Corynespora leaf spot
Curvularia leaf spot	Cylindrosporium leafspot	Dactylaria leafspot
Didymellina leafspot	Drechslera leafspot	Fabraea(Entomosporium)leafspot
Fusarium leafspot	Gleosporium black leafspot	Ink spot (Drechslera)
Monilinia blossom blight	twig blight	Mycosphaerella ray blight
Myrothecium leafspo	brown rot	Nematostoma leaf blight
Phyllosticta leaf spot	Rhizoctonia web blight	Ramularia leaf spot
Septoria leaf spot	Sphaeropsis leafspot	Stagonospora leaf scorch
Tan leafspot(Curvularia)	Volutella leaf blight	

**(2) FLOWER SPOTS/BLIGHTS**

Botrytis flower spot	flower blight	Curvularia flower spot
Monillinia blossom blight	Ovulinia flower blight	Rhizopus blossom blight
Sclerotinia flower blight		

**(3) CYLINDROCLADIUM STEM CANKER**

**(4) PHYTOPHTHORA LEAF BLIGHT dieback**

**(5) POWDERY MILDEWS**

Erysiphe cichoracearum	Microsphaera spp
------------------------	------------------

**(6) RUSTS**

Gymnosporangium spp	Puccinia spp	Pucciniastrum hydrant eae
---------------------	--------------	---------------------------

**(7) TAPHRINA blister**

**(8) SCAB (Venturia inaequalis)**

**THE FOLLOWING ORNAMENTAL PLANT SPECIES WHICH HAVE BEEN TESTED WITH CHLOROTHALONIL AT RECOMMENDED RATES DID NOT EXHIBIT PHYTOTOXICITY**

<u>BOTANICAL NAME</u>	<u>COMMON NAME</u>	<u>BOTANICAL NAME</u>	<u>COMMON NAME</u>
Aechmea fasciata	Aechmea	Episcia cupreata	Flame Violet
Araucaria heterophylla	Norfolk Island Pine	Fittonia spp	Silver Nerve Plant
Asplenium nidus	Birdnest fern	Gerbera jamesonii	Gerbera Daisy
Bougainvillea spp	Bougainvillea	Gynura sarmentosa	Purple Passion Vine
Caladium spp	Caladium	Gypsophila paniculata	Baby's Breath
Calathea makoyana	Peacock plant	Hoya spp	Wax Plant
Calistephus chinensis	Aster	Ilex cornuta	Chinese Holly
Carissa grandiflora	Natal plum	Ilex crenata	Japanese Holly
Clerodendron thomsonae	Bleeding heart	Impatiens spp	Impatiens
Codiaeum spp	Croton	Pilea cadierei	Aluminum Plant
<u>BOTANICAL NAME</u>	<u>COMMON NAME</u>	<u>BOTANICAL NAME</u>	<u>COMMON NAME</u>
Cordylone terminalis	Ti Plant	Platyserum spp	Staghorn fern
Crassula argentea	Jade Plant	Sansevieria trifasciata	Birdnest Sansevieria
Cyrtomium falcatum	Holly Leaf Fern	Tolmeia menziesii	Piggy back Plant
Dionaea muscipula	Venus Fly Trap	Yucca elephantipes	Spineless Yucca
Dizygotheca elegantissima	False Aralia	Zygocactus truncatus	Christmas cactus
Epipremnum aureum	Golden Pothos	Scindapsus	

**NOTE** DO NOT apply this product to either green or variegated Pittosporum or to Schefflera as multiple applications have been demonstrated to cause phytotoxic responses

**ORNAMENTAL CONIFERS**

Apply this fungicide at the rate given below per gallon of water to cover 350 sq ft  
 Apply to obtain uniform coverage of tree canopy Do not allow livestock to graze treated areas  
 Rates are given in Tablespoonfuls of product per gallon of water Do not retreat within 7 days  
 Do not make more than 6 applications per year for rates up to 4 1/2 TBS Do not make more than 4 applications per year at rates above 4 1/2 TBS

<u>DISEASES</u>	<u>TBS/GAL</u>	<u>APPLICATION DIRECTIONS</u>
Swiss needlecast	7 1/2 TBS	Make first application in Spring when new shoot growth is 1/2 to 2 inches long
Scleroderris canker(pines)	2 1/2 TBS to 4 1/2 TBS	
Sirococcus tip blight	3 1/2 TBS	Make additional applications at 3 to 4 week intervals until conditions no longer favor disease development
Cyclaneusma and Lophodermium needlecasts	7 1/2 TBS	Apply in early Spring prior to bud break Repeat applications at 6 to 8 week intervals until spore release ceases in late Fall Apply monthly during periods of frequent rainfall During drought periods applications may be suspended then resumed upon next occurrence of needle wetness
Rhabdocline needlecast	2 1/2 TBS to 4 1/2 TBS	Apply at budbreak and repeat at 3 to 4 week intervals until needles are fully elongated and conditions no longer favor disease development
Botrytis seedling blight Phoma twig blight	2 1/2 TBS	Begin applications in nursery beds when seedlings are 4 inches tall and when cool moist conditions favor disease development

**TREE AND ORCHARD CROPS**

Dosages are given in Tablespoonfuls (TBS) per gallon of water Spray to point of run off Obtain complete coverage of the tree canopy  
 For stone fruit do not use more than 2.5 gallons of spray per 350 sq ft Do not exceed 5 applications per season  
 For papaya do not use more than 1 gallon of spray per 350 sq ft Do not exceed 3 applications per season DO NOT apply after shuck split and before harvest If additional fungicide applications are needed before harvest apply an alternate fungicide labeled for that use

<u>CROP</u>	<u>DISEASES</u>	<u>TBS/GA</u>	<u>APPLICATION DIRECTIONS</u>
STONE FRUIT	Leaf curl	2 TBS	Apply at leaf fall in Autumn Do not retreat within 10 days When conditions favor disease make one or two additional applications in mid and late Winter before budswell Where Coryneum blight (shothole) occurs also apply at budbreak and shuck split
(Peach Nectarine)	Coryneum blight (shothole)		
Apricot	Brown rot	2 TBS	Apply once at popcorn (pink red or early white bud) and a second application at full bloom
Cherry	blossom blight		If weather conditions favor disease development make an additional application at petal fall Do not retreat within 10 days
Plum	Lacy (russet) scab		
Prune (plum/prune)			

Stone Fruit continued

<u>CROP</u>	<u>DISEASES</u>	<u>TBS/GAL</u>	<u>APPLICATION DIRECTIONS</u>
	Cherry leaf spot Peach Nectarine Apricot scab	2 TBS	In addition to the bloom applications make one application at shuck split For control of Cherry leaf spot after harvest make one application 7 days after fruit has been removed Where trees have a history of high leaf spot incidence make a second application 10 14 days later
Papaya	Alternaria Fruit rot Anthracnose Stem end rot	3 TBS to 4 TBS	Begin treatment when conditions favor disease development Do not retreat within 14 days

**VEGETABLE DISEASES**

Rates are given in Tablespoonfuls (TBS) per gallon of water to cover 350 square feet of planting Spray to obtain thorough coverage but do not exceed 1 gallon of spray mixture per 350 square feet or residue tolerances may be exceeded The number shown in parentheses following crop name indicates the interval between last application and harvest When sprays for disease control must be made at intervals closer to harvest than indicated use an alternate fungicide registered for that use **DO NOT** graze treated areas or feed treated plant parts to livestock

<u>CROP</u>	<u>DISEASES</u>	<u>TBS/GAL</u>	<u>APPLICATION DIRECTIONS</u>
Bean (snap)(7)	Rust  Botrytis blight (gray mold)	2 TBS to 4 TBS 4 TBS	Begin applications during early bloom stage or when disease first threatens Do not retreat within 7 days Do not exceed 4 applications per season
Beans (dry)(42) Navy Pinto Kidney Lima & Blackeye	Rust Anthracnose Downy Mildew Cercospora leaf spot (blackeye only)	2 TBS	Begin applications during early bloom stage Do not retreat within 7 days For use only on beans to be harvested dry with pods removed Do not exceed 5 applications per season
Cabbage Chinese Cabbage(7) (tight headed varieties only) Cauliflower Broccoli Chinese Broccoli (7) Brussels sprouts	Alternaria leaf spot Downy mildew	2 1/2TBS	Begin applications when transplants are set in field or shortly after emergence for field seeded crop or when conditions favor disease development Do not retreat within 7 days Repeat at 7 10 day intervals Do not exceed 8 applications per season
Carrot (7)	Cercospora (early blight) Alternaria (late blight)	2 1/2 TBS	Start applications when disease threatens Do not retreat within 7 days Repeat applications at 7 10 day intervals Do not exceed 11 applications per season
Celery(7)	Cercospora (early blight) Septoria (late blight) Basal stalk rot (Rhizoctonia solani)	3 TBS to 4TBS	Weekly applications when transplants are set in field Do not exceed 8 applications per season Do not retreat within 7 days
Corn (sweet)(14)	Helminthosporium leaf blights Rust	1 TBS to 2 1/2TBS	Begin applications when conditions favor disease development Do not retreat within 7 days Repeat at 7 to 10 day intervals Do not exceed 6 applications per season

**DONOT APPLY TO SWEET CORN TO BE PROCESSED DONOT ALLOW LIVESTOCK TO GRAZE IN TREATED FIELDS DONOT ENSILE TREATED CORN OR USE AS LIVESTOCK FORAGE**

CUCURBITS cumber	Anthracnose Downy Mildew	2 TBS to 2 1/2TBS	Begin applications when plants are in first true leaf C u stage or when conditions favor disease development Do not retreat within 7 days Do not exceed 7 applications per season
Cantaloupe Muskmelon Honeydew Watermelon Squash Pumpkin	Target spot Cercospora Leaf spot Gummy stem blight (black rot) Scab Powdery Mildew (Sphaerotheca only)	3 to 4TBS	Under severe conditions shorten spray intervals

<u>CROP</u>	<u>DISEASES</u>	<u>TBS/GAL</u>	<u>APPLICATION DIRECTIONS</u>
Onion (dry bulb)(7)	Botrytis leaf blight/blast Botrytis neck rot (suppression) Purple blotch Neck rot in storage	1 1/2 to 2 1/2 TBS	Do not retreat within 10 days Prior to infection shorten spray interval to 7days when disease is present Do not exceed 11 applications per season A minimum of 3 applications prior to one week before lifting
Onion (green bunching)(14)	Botrytis leaf blight/blast	2 TBS to 4 TBS	Begin weekly applications prior to favorable infection periods and continue for as long as conditions favor disease Do not retreat within 7 days DO NOT apply more than 3 times per season to green bunching onions leeks or shallots For Garlic do not exceed 6 applications per season Make first application at first sign of disease or when conditions favor disease infection Do not retreat within 7 days DO NOT apply more than 4 times per season
Leak (14) Shallot(14) Garlic (7) Parsnip(10)	Purple blotch Downey mildew (suppression) Alternaria leaf	2 1/2 TBS	Apply when leaf wetness first occurs or 30 40 days after planting Do not retreat within 14 days Do not exceed 8 applications per season
Peanut(14)	Early leaf spot (Cercospera) Late leaf spot (Cercosporidium) Rust Web blotch	2 TBS	Apply as a banded treatment directed over the foliage beginning when vines are first exposed and leaf wetness occurs Do not retreat within 5 days As vines close apply as a complete cover spray at 7 10 day intervals Use the 7 day interval when disease conditions worsen being sure to apply 1 gallon for each 350 square feet Do not exceed 10 applications per season
Potato (7)	Late blight	2 TBS	Do not retreat within 7 days Begin applications when dew or rain occurs Septoria leaf spot Target spot and disease threatens Do not exceed 7 applications per season
Tomato	Early blight Late blight Gray Leaf Spot Gray Leaf mold Anthracnose Alternaria fruit rot Botrytis gray mold Rhizoctonia fruit rot	3 TBS to 4 TBS	

### STORAGE AND DISPOSAL

Do not contaminate water food or feed by storage or disposal

**PESTICIDE STORAGE** Store pesticide in the original container in a locked storage area

#### CONTAINER DISPOSAL

Nonrefillable container Do not reuse or refill this container

**If empty** Do not reuse this container Place in trash or offer for recycling if available

**If partly filled** Call your local solid waste agency or 1 800 CLEANUP for disposal instructions Never place unused product down any indoor or outdoor drain

### WARRANTY AND LIMITATION OF DAMAGES

Seller warrants that this material conforms to its chemical description and is reasonably fit for the purposes stated on the label when used in accordance with its directions under normal conditions of use and buyer assumes the risk of any use contrary to such directions SELLER MAKES NO OTHER EXPRESS OR IMPLIED WARRANTY INCLUDING ANY OTHER EXPRESS OR IMPLIED WARRANTY OF FITNESS OR OF MERCHANTABILITY AND NO AGENT OF SELLER IS AUTHORIZED TO DO SO In no event shall the sellers breach of warranty exceed the purchase price of the material as to which a claim is made

For questions pertaining this product, please email us at support@southernag.com

ACCEPTED  
with COMMENTS  
In EPA Letter Dated  
JUN 22 2012

for the Federal Insecticide,  
Fungicide and Rodenticide Act  
and for the pesticide  
registered under EPA Reg. No  
804-227