



UNITED STATES ENVIRONMENTAL PROTECTION AGENCY  
WASHINGTON, DC 20460

OFFICE OF CHEMICAL SAFETY  
AND POLLUTION PREVENTION

April 8, 2024

Laura Rankin  
Registrations Department  
Southern Agricultural Insecticides, Inc.  
P.O. Box 218  
Palmetto, FL 34220

Subject: Registration Review Label Amendments Incorporating Mitigation from the Fish and Wildlife Services (FWS) and the National Marine Fisheries Services (NMFS) Biological Opinions on the Effects of Malathion on Endangered and Threatened Species and Designated Critical Habitat  
*Product Name:* SA-50 Malathion 50% E.C.  
*EPA Registration Number:* 829-282  
*Application Dates:* 6/27/2022 and 10/27/2022  
*Decision Numbers:* 585526 and 589921

Dear Laura Rankin:

The Agency, in accordance with the Federal Insecticide, Fungicide and Rodenticide Act (FIFRA), as amended, has completed reviewing all the information submitted with your application to support the Registration Review of the above referenced product in connection with the FWS and NMFS' Biological Opinions on the effects of malathion on federally listed endangered and threatened species and designated critical habitat in accordance with section 7 of the Endangered Species Act (ESA) of 1973, as amended (16 U.S.C. 1531 et seq.). The Agency has concluded that your submission is acceptable. The label referred to above, submitted in connection with registration under FIFRA, as amended, is acceptable.

Should you wish to add/retain a reference to the company's website on your label, then please be aware that the website becomes labeling under the Federal Insecticide Fungicide and Rodenticide Act and is subject to review by the Agency. If the website is false or misleading, the product would be misbranded and unlawful to sell or distribute under FIFRA section 12(a)(1)(E). 40 CFR 156.10(a)(5) list examples of statements EPA may consider false or misleading. In addition, regardless of whether a website is referenced on your product's label, claims made on the website may not substantially differ from those claims approved through the registration process. Therefore, should the Agency find or if it is brought to our attention that a website contains false or misleading statements or claims substantially differing from the EPA approved registration, the website will be referred to the EPA's Office of Enforcement and Compliance.

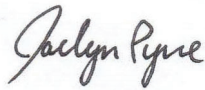
A stamped copy of your labeling is enclosed for your records. This labeling supersedes all previously accepted labeling. You must submit one copy of the final printed labeling before you release the product for shipment with the new labeling. In accordance with 40

Page 2 of 2  
EPA Reg. No. 829-282  
Decision No. 585526 and 589921

CFR 152.130(c), you may distribute or sell this product under the previously approved labeling for 12 months from the date of this letter. After 12 months, you may only distribute or sell this product if it bears this new revised labeling or subsequently approved labeling. "To distribute or sell" is defined under FIFRA section 2(gg) and its implementing regulation at 40 CFR 152.3.

If you have any questions, please contact Carolyn Smith by phone at (202) 566-2273 or via email at [smith.carolyn@epa.gov](mailto:smith.carolyn@epa.gov).

Sincerely,

A handwritten signature in cursive script that reads "Jaclyn Pyne". The signature is written in black ink on a white background.

Jaclyn Pyne, Team Leader  
Risk Management and Implementation Branch 3  
Pesticide Re-Evaluation Division  
Office of Pesticide Programs

Enclosure

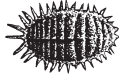
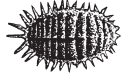
Intended for Commercial Use-  
Sublabel A

**S A SOUTHERN**  
**5 0 AG®**

Malathion GROUP 1B INSECTICIDE

# MALATHION

## 50% E.C.

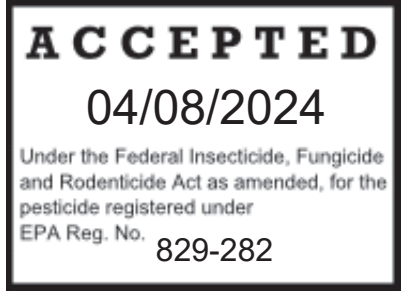


For outdoor use only.



ACTIVE INGREDIENT:	BY WT.
Malathion: 0,0-dimethyl phosphorodithioate of diethyl mercaptosuccinate .....	50.0%
INERT INGREDIENTS:* .....	50.0%
TOTAL.....	100.00%

\*Contains xylene range aromatic solvent.  
Contains 4.4 lbs. Malathion per gallon.



**KEEP OUT OF REACH OF CHILDREN**  
**CAUTION**

See inside of label for Additional Precautionary Statements and Directions for Use. Follow directions on side of label to open.

EPA Reg. No. 829-282 EPA EST. NO. 829-FL-1

**Southern Agricultural Insecticides, Inc.**  
P.O. Box 218 Palmetto, FL 34220

J7

**Net Contents Liquid: 1 Gallon (3.785 liters), 2.5 Gallons (9.46 liters)**

**FIRST AID  
ORGANOPHOSPHATE**

**IF SWALLOWED:** Immediately call a Poison Control Center. Do not induce vomiting unless told to by a poison control center or doctor. Do not give any liquid to the person. Do not give anything by mouth to an unconscious person.

**IF ON SKIN OR CLOTHING:** Take off contaminated clothing. Rinse skin immediately with plenty of water for 15-20 minutes. Call a poison control center or doctor for treatment advice.

**IF IN EYES:** Hold eye open and rinse slowly and gently with water for 15-20 minutes. Remove contact lenses, if present, after the first 5 minutes, then continue rinsing eye. Call a poison control center or doctor for treatment advice.

**IF INHALED:** Remove person to fresh air. If person is not breathing, call 911 or ambulance, then give artificial respiration, preferably mouth-to-mouth if possible. Call a poison control center or doctor for further treatment advice.

Have the product container or label with you when calling a poison control center or doctor or going for treatment. You may also contact the National Pesticide Information Center at 1-800-7378.

**NOTE TO PHYSICIAN:** Malathion is a cholinesterase inhibitor. Atropine is antidotal. Contains petroleum distillate. May pose aspiration pneumonia hazard.

**PRECAUTIONARY STATEMENTS  
HAZARDS TO HUMANS & DOMESTIC ANIMALS**

**CAUTION:** Harmful if swallowed. Harmful if absorbed through skin. Causes moderate eye irritation. Avoid contact with skin, eyes or clothing. Prolonged or frequently repeated skin contact may cause allergic reactions in some individuals. Wash thoroughly with soap and water after handling and before eating, drinking, chewing gum, using tobacco, or using the toilet.

**PERSONAL PROTECTIVE EQUIPMENT (PPE)**

Some materials that are chemical-resistant to this product are barrier laminate or viton. Mixers, loaders, applicators, flaggers, and other handlers must wear: Long sleeved shirt and long pants, shoes plus socks, chemical resistant gloves, chemical resistant headgear (air blast only).

**USER SAFETY REQUIREMENTS**

Follow manufacturer's instructions for cleaning/maintaining PPE. If no such instructions for washables exist, use detergent and hot water. Keep and wash PPE separately from other laundry. Discard clothing and other absorbent materials that have been drenched or heavily contaminated with this product's concentrate. Do not reuse them.

**USER SAFETY RECOMMENDATIONS**

Users should wash hands before eating, drinking, chewing gum, using tobacco, or using the toilet. Users should remove clothing/PPE immediately if pesticide gets inside. Then wash thoroughly and put on clean clothing. Users should remove PPE immediately after handling this product. Wash the outside of gloves before removing. As soon as possible, wash thoroughly and change into clean clothing.

**ENVIRONMENTAL HAZARDS**

This pesticide is toxic to fish and aquatic invertebrates. Drift and runoff may be hazardous to aquatic organisms in water adjacent to treated areas.

Do not apply directly to water, or to areas where surface water is present, or to intertidal areas below the mean highwater mark. Do not contaminate water when disposing of equipment wash water or rinsate. Drift and runoff may be hazardous to aquatic organisms in water adjacent to treated areas. Avoid drift or run off into storm drains, drainage ditches, or surface waters. Applying this product in calm weather when rain is not predicted for the next 24 hours will help to maximize the chances that wind, or rain will not blow or wash pesticide off the treatment area. Rinsing application equipment over the treated area will help avoid run off to water bodies or drainage systems.

(Environmental Hazards continued on next page)

(Environmental Hazards continued)

This product is highly toxic to bees exposed to direct treatment on blooming crops or weeds. Do not apply this product or allow it to drift to blooming crops or weeds while bees are actively visiting the treatment area. In citrus, stone fruit, pome fruit and tree nuts: Do not apply this product within 3 days prior to bloom, during bloom, or until petal fall is complete. **Protect pollinating insects by following label directions intended to minimize drift and to reduce risk to these organisms.**

Reporting Ecological Incidents: To report ecological incidents, including mortality, injury, or harm to plants and animals, call 941-722-3285.

#### PHYSICAL OR CHEMICAL HAZARDS

Combustible: Do not use or store near heat or open flame.

### DIRECTIONS FOR USE

- It is a violation of Federal Law to use this product in a manner inconsistent with its labeling.
- For any requirements specific to your State or Tribe, consult the agency responsible for pesticide regulation.
- Reporting Ecological Incidents: To report ecological incidents, including mortality, injury, or harm to plants and animals, call 941-722-3285.
- Do not apply this product in a way that will contact workers or other persons, either directly or through drift. Only protected handlers may be in the area during application.
- DO NOT APPLY THIS PRODUCT IN A WAY THAT WILL CONTACT ANY PERSON OR PET, EITHER DIRECTLY OR THROUGH DRIFT.
- Do not allow people or pets to enter the treated area until sprays have dried.
- DO NOT APPLY THIS PRODUCT THROUGH ANY TYPE OF IRRIGATION SYSTEM.
- For outdoor use only.
- Do not apply by ground within 25 feet of aquatic habitats (such as, but not limited to, lakes, reservoirs, rivers, permanent streams, wetlands or natural ponds, estuaries, and commercial fish farm ponds). You must follow the instructions for additional buffer distances beyond the 25 feet, as applicable, per the Endangered Species Protection Bulletin for the area in which you are applying the product. You must obtain a Bulletin no earlier than six months before using this product. To obtain Bulletins, consult <http://www.epa.gov/espp/>, call 1-844-447-3813, or email [ESPP@epa.gov](mailto:ESPP@epa.gov).
- Do not apply within 25 feet of aquatic habitats (such as, but not limited to, lakes, reservoirs, rivers, permanent streams, wetlands or natural ponds, estuaries and commercial fish farm ponds). Do not apply directly to sewers or storm drains, or to any area like a drain or gutter where drainage to sewers, storm drains, water bodies, or aquatic habitat can occur.
- Do not allow the product to enter any drain during or after application.
- Do not apply directly to impervious horizontal surfaces such as sidewalks, driveways, and patios except as a spot or crack-and-crevice treatment.
- Do not apply or irrigate to the point of runoff.
- Do not apply to vertical surfaces directly above pervious or impervious surfaces that drain into ditches, storm drains, gutters, or surface waters.
- Do not apply this product when a storm event likely to produce runoff from the treated area is forecasted (by NOAA/National Weather Service, or other similar forecasting service) to occur within 48 hours following application.
- Do not apply this product when soil is saturated, or when a storm event likely to produce runoff from the treated area is forecasted (by NOAA/National Weather Service, or other similar forecasting service) to occur within 48 hours following application.

#### AGRICULTURAL USE REQUIREMENTS

Use this product only in accordance with its labeling and with the Worker Protection Standard, 40 CFR Part 170. This Standard contains requirements for the protection of agricultural workers on farms, forests, and nurseries, and handlers of agricultural pesticides. It contains requirements for training, decontamination, notification. It also contains specific instructions and exceptions pertaining to the statements on this labeling about personal protective equipment (PPE), restricted-entry intervals. The requirements in this box only apply to uses of this product that are covered by the Worker Protection Standard. Do not apply this product in a way that will contact workers or other persons, either directly or through drift. Only protected handlers may be in the area during application.

Do not enter or allow worker entry into treated areas during the restricted entry interval (REI). The REI for each crop is listed in the directions for use associated with each crop.

PPE required for early entry to treated areas that is permitted under the Worker Protection Standard and that involves contact with anything that has been treated, such as plants, soil, or water, is: Coveralls, Shoes plus Socks and, chemical-resistant gloves made of any waterproof material.

#### NON-AGRICULTURAL USE REQUIREMENTS

The requirements in this box apply to uses of this product that are NOT within the scope of the Worker Protection Standard for agricultural pesticides (40 CFR Part 170). The WPS applies when this product is used to produce agricultural plants on farms, forests, or nurseries. Do not enter or allow others to enter until sprays have dried.

#### ENDANGERED SPECIES

Endangered Species Protection Requirements: It is a Federal offense to use any pesticide in a manner that results in an unauthorized "take" (e.g., kill or otherwise harm) of an endangered species and certain threatened species under the Endangered Species Act section 9. When using this product, you must follow the measures contained in the Endangered Species Protection Bulletin for the area in which you are applying the product. You must obtain a Bulletin no earlier than six months before using this product. To obtain Bulletins, consult <http://www.epa.gov/espp/>, call 1-844-447-3813, or email [ESPP@epa.gov](mailto:ESPP@epa.gov). You must use the Bulletin valid for the month in which you will apply the product.

Reporting Ecological Incidents: To report ecological incidents, including mortality, injury, or harm to plants and animals, call 941-722-3285.

#### RESISTANCE-MANAGEMENT

Malathion	GROUP	<b>1B</b>	INSECTICIDE
-----------	-------	-----------	-------------

For resistance management, Malathion 50% EC contains a Group 1B insecticide (or acaricide). Any insect/mite population may contain individuals naturally resistant to malathion and other Group 1B insecticides/acaricides. The resistant individuals may dominate the insect/mite population if this group of insecticides/acaricides are used repeatedly in the same fields. Appropriate resistance-management strategies should be followed.

To delay insecticide/acaricide resistance, take the following steps:

- Rotate the use of Malathion or other Group 1B insecticides/acaricides within a growing season, or among growing seasons, with different groups that control the same pests.
- Use tank mixtures with insecticides/acaricides from a different group that are equally effective on the target pest when such use is permitted. Do not rely on the same mixture repeatedly for the same pest population. Consider any known cross-resistance issues (for the targeted pests) between the individual components of a mixture.
- Individual insecticides selected for use in mixtures should be highly effective and be applied at the rates at which they are individually registered for use against the target species.
- Adopt an integrated pest management program for insecticide/acaricides use that includes scouting, uses historical information related to pesticide use, crop rotation, record keeping, and which considers cultural, biological and other chemical control practices.
- Monitor after application for unexpected target pest survival. If the level of survival suggests the presence of resistance, consult with your local university specialist or certified pest control advisor.
- Contact your local extension specialist or certified crop advisors for any additional pesticide resistance-management and/or IPM recommendations for the specific site and pest problems in your area.

#### PRECAUTIONS AND RESTRICTIONS

- \* DO NOT APPLY THIS PRODUCT THROUGH ANY TYPE OF IRRIGATION SYSTEM.
- \* DO NOT APPLY BY AERIAL APPLICATION.

#### SPRAY DRIFT MANAGEMENT APPLICATION RESTRICTIONS

Observe the following requirements when spraying in the vicinity of aquatic areas such as, but not limited to lakes; reservoirs; rivers; permanent streams; marshes or natural ponds; estuaries, and commercial fish ponds.

#### MANDATORY SPRAY DRIFT MANAGEMENT

##### **Airblast applications:**

- Sprays must be directed into the canopy.
- Do not apply when wind speeds exceed 10 miles per hour at the application site.
- User must turn off outward pointing nozzles at row ends and when spraying outer row.
- Do not apply during temperature inversions.

##### **Ground Boom Applications:**

- Do not release spray at a height greater than 4 feet above the ground or crop canopy.
- Applicators must select nozzle and pressure that deliver medium or coarser droplets in accordance with American Society of Agricultural & Biological Engineers Standard 572 (ASABE S572).
- Do not apply when wind speeds exceed 10 mph at the application site.
- Do not apply during temperature inversions.

##### **Non-ULV Ground Application (includes ground boom and airblast applications:)**

- Do not apply within 25 feet of aquatic habitats (such as, but not limited to, lakes, reservoirs, rivers, streams, wetlands, ponds, estuaries, and commercial fish ponds). You must follow the instructions for additional buffer distances beyond the 25 feet, as applicable, per the Endangered Species Protection Bulletin for the area in which you are applying the product. You must obtain a Bulletin no earlier than six months before using this product. To obtain Bulletins, consult <http://www.epa.gov/espp/>, call 1-844-447-3813, or email [ESPP@epa.gov](mailto:ESPP@epa.gov).

#### STATE AND FEDERAL PROGRAMS ONLY

Use on the following sites are limited to state and federal programs only:

- Agricultural, uncultivated areas and fence rows/hedge rows
- Non-agricultural right of way/hedgerows

For use only by federal, state, tribal or local government officials responsible for insect control or by persons certified in the appropriate category or otherwise authorized by the state or tribal lead pesticide regulatory Agency to perform grasshopper/Mormon Cricket, Beet Leafhopper or Boll Weevil control applications, or by persons under their supervision, or as allowed by state regulations for persons treating private property.

#### POLLINATOR BEST MANAGEMENT PRACTICES

Following best management practices can help reduce risk to terrestrial pollinators. Examples of best management practices include applying pesticides in the evening and at night when pollinators are not foraging and avoiding applications to flowering plants. For additional resources on pollinator best management practices, visit <https://www.epa.gov/pollinator-protection/find-best-management-practices-protect-pollinators>.

Managed pollinator protection plans are developed by states/tribes to promote communication between growers, landowners, farmers, beekeepers, pesticide users, and other pest management professionals to reduce exposure of bees to pesticides. If available, visit state plans for additional information on how to protect pollinators.

How to Report Bee Kills. It is recommended that users contact both the state lead agency and the U.S. Environmental Protection Agency to report bee kills due to pesticide application. Bee kills can be reported to EPA at [beekill@epa.gov](mailto:beekill@epa.gov). To contact your state lead agency, see the current listing of state pesticide regulatory agencies at the National Pesticide Information Center's website: [http://npic.orst.edu/reg/state\\_agencies.html](http://npic.orst.edu/reg/state_agencies.html).

##### **SPECIFIC COMMERCIAL NURSERY USE (ADDITIONAL DIRECTIONS):**

- Apply by ground application only.
- Do not apply more than two applications per year.
- Minimum retreatment interval is 7 days.
- Do not apply when the wind speed is greater than 10 mph.
- Applicators are required to select the nozzle and pressure that deliver medium or coarser droplets (ASABE S572).
- Do not apply by ground equipment within 25 feet of aquatic habitats (such as, but not limited to, lakes, reservoirs, rivers, permanent streams, wetlands or natural ponds, estuaries and commercial fish farm ponds).

## OUTDOOR ORNAMENTALS

(Ornamental Herbaceous Plants, Shade Trees, Ornamental Woody Shrubs, Ornamental Non-Flowering Plants)

For use on outdoor ornamentals to control the listed insects. Do not apply to Boston, Pteris or Maidenhair Ferns, Viburnum, Lantana, Crassula, Canaerti Junipers, Petunias, or small leaf Spirea since injury may result.

<b>Pest Controlled</b>	<b>Rate/ 100 Gallons Water</b>	<b>Minimum Retreatment Interval</b>	<b>Rentry Interval</b>	<b>Maximum Applications per year**</b>	<b>Comments</b>
Aphids, Spider Mites	1.5 pints	10 days	12 hours	6	
Bagworms, Birch Leaf Miner, Boxwood Leaf Miner	2 pints	10 days	12 hours	4	
European Pine Shoot Moth, Four-lined Leaf Bug, Japanese Beetle Adult, Potato Leafhopper, Rose Leafhopper, Tarnished Plant Bug Thrip.	1.5 pints	10 days	12 hours	6	
Lace Bug	1 pint	10 days	12 hours	8	
Mealybugs, Whiteflies	1 pint	10 days	12 hours	6	
Oak Kermes	2 pints	10 days	12 hours	3	
Tent Caterpillar	2 pints	10 days	12 hours	4	
Oyster Shell Scale	1 pint	10 days	12 hours	8	
Euonymus Scale, Scurfy Scale	1.5 pints	10 days	12 hours	6	
Azalea Scale, Magnolia Scale, Pine Leaf Scale	2.25 pints	10 days	12 hours	4	
Fletcher Scale, Florida Red Scale, Juniper Scale	2 pints	10 days	12 hours	4	Apply when scale crawlers have settled on foliage.
Black Scale Crawlers, Soft Brown Scale	2.25 pints	10 days	12 hours	3	
Monterey Pine Scale	2.5 pints	10 days	12 hours	3	
Pine Needle Scale	4 pints	10 days	12 hours	2	
Wax Scale	4 pints	10 days	12 hours	2	Apply when scale crawlers have settled on foliage.

\*\*Commercial Nurseries are limited to application 2 times per year. See Commercial Nursery Additional Directions.

The proper use of a spreader sticker will enhance insect control, especially with scale. Treat when insects are first seen and damage is anticipated.



## **VEGETABLES**

Thoroughly spray plants particularly the undersides of leaves and the developing fruit. All use rates are in 100 gallons of water/acre.

**The retreatment interval is indicated by the number in ( ) following the crop. The number represents the minimum days between applications.**

**\*REI is the Restricted Entry Interval.**

**CELERY: (7)** For Aphids, Spider Mites - Use 29 ounces/100 gallons per acre. REI is 24 hours. Do not make more than 2 applications per year. Do not apply within 7 days of harvest.

**CUCUMBER: (7)** For Aphids, Spider Mites - Use 29 ounces/100 gallons per acre. REI is 24 hours. Do not make more than 2 applications per year. Do not apply within 1 day of harvest.

**SQUASH, summer: (7)** For Aphids, Spider Mites, Cucumber Beetle, Leaf Hopper - Use 29 ounces/100 gallons per acre. Do not apply unless plants are dry. REI is 24 hours. Do not make more than 3 applications per year. Do not apply within 1 day of harvest.

**SQUASH, winter: (7)** For Aphids, Spider Mites, Cucumber Beetle, Leaf Hopper - Do not apply unless plants are dry. Use 29 ounces/100 gallons per acre. REI is 12 hours. Do not make more than 3 applications per year. Do not apply within 1 day of harvest.

**CANTALOUPE: (7)** For Aphids, Spider Mites, Cucumber Beetle, Leaf Hopper - Use 29 ounces/100 gallons per acre. REI is 12 hours. Do not make more than 2 applications per year. Do not apply within 1 day of harvest. Do not apply unless plants are dry.

**CABBAGE: (7)** For Aphids, Imported Cabbage Worm, Cabbage Looper, Leaf Hopper - Use 29 ounces/100 gallons per acre. Do not make more than 3 applications per year. REI is 48 hours. Do not apply within 7 days of harvest.

**BROCCOLI: (7)** For Aphids, Imported Cabbage Worm, Cabbage Looper, Leaf Hopper - Use 36 ounces/100 gallons per acre. Do not make more than 2 applications per year. REI is 48 hours. Do not apply within 2 days of harvest.

**KALE: (5)** For Aphids, Imported Cabbage Worm, Cabbage Looper, Leaf Hopper - Use 29 ounces/100 gallons per acre. Do not make more than 3 applications per year. Do not apply within 7 days of harvest. REI is 12 hours.

**MUSTARDS: (5)** For Aphids, Imported Cabbage Worm, Cabbage Looper, Leaf Hopper - Use 29 ounces/100 gallons per acre. REI is 12 hours. Do not make more than 3 applications per year. Do not apply within 7 days of harvest.

**TURNIPS: [greens (5), roots (7)]** For Aphids, Imported Cabbage Worm, Cabbage Looper, Leaf Hopper - Use 36 ounces/100 gallons per acre. Do not make more than 2 applications per year. REI is 12 hours. Do not apply within 1 day of harvest.

**HEAD LETTUCE: (6)** For Aphids, Imported Cabbage Worm, Cabbage Looper, Leaf Hopper - Use 29 ounces/100 gallons per acre. Do not make more than 2 applications per year. REI is 24 hours. Do not apply within 14 days of harvest.

**EGGPLANT: (5)** For Aphids, Spider Mites - Use 15 ounces/100 gallons per acre. Do not make more than 4 applications per year. REI is 12 hours. Do not apply within 3 days of harvest.

(vegetables continued on next page)

7

(vegetables continued)

**ONIONS: (7)** For Thrips - Use 29 ounces/100 gallons per acre. Do not make more than 2 applications per year. REI is 12 hours. Do not apply within 3 days of harvest.

**PEPPERS: (5)** For Aphids - 15 ounces/100 gallons per acre. Do not make more than 2 applications per year. REI is 12 hours. Do not apply within 3 days of harvest.

**POTATOES: (7)** For Aphids, Leaf Hoppers, Mealybugs - 15 ounces/100 gallons per acre. Do not make more than 2 applications per year. REI is 12 hours. Zero pre-harvest interval.

**RADISHES: (7)** For Aphids - Use 29 ounces/100 gallons per acre. Do not make more than 2 applications per year. REI is 12 hours. Do not apply within 7 days of harvest.

**RICE (7)** To control Grasshoppers, Rice Stink Bug and Rice Leaf Minor - use 1 1/2 - 2 pt. per acre. Use higher rate for rice leaf minor. Apply as a coarse spray in sufficient water (usually 3-20 gal./A depending on equipment) for thorough coverage. Apply when wind is 5 M.P.H. or below to avoid drift. May be applied three times per year at the 1 1/2 pint rate. The maximum application per year is 2 at the 2 pint rate. The REI is 12 hours. Do not apply within 7 days of harvest. Broadcast use only over intermittently flooded areas. Application may not be made around bodies of water where fish or shellfish are grown and/or harvested commercially.

**NOTE: THERE IS A REQUIRED 24 HOUR HOLDING TIME AFTER APPLICATION OF MALATHION BEFORE PADDY WATER CAN BE RELEASED.**

**TOMATOES: (5)** For Aphids, Spider Mites - Use 29 ounces/100 gallons per acre. Do not make more than 4 applications per year. The REI is 12 hours. Do not apply within 1 days of harvest.

## FRUIT

The retreatment interval is indicated by the number in ( ) following the crop. The number represents the minimum days between applications. All use rates are in 100 gallons of water/acre.

\*REI is the Restricted Entry Interval.

Do not apply this product within 3 days prior to bloom, during bloom, or until petal fall is complete.

**GRAPES: (14)** For Leaf Hoppers, Spider Mites, Mealybugs - Use 29 ounces/100 gallons per acre. Do not make more than 2 applications per year. REI is 3 days for girdling and tying; 24 hrs for all other activities. Do not apply within 3 days of harvesting. May cause injury to foliage. Check with local Agricultural Authorities.

**CHERRIES: (3)** For Black Cherry Aphids and Fruit Tree Leaf Rollers - Use 29 ounces/100 gallons per acre. Do not make more than 4 applications per year. REI is 12 hours. Thoroughly spray trees. Do not apply within 3 days of harvesting. May injure foliage. Do not apply this product within 3 days prior to bloom, during bloom, or until petal fall is complete.

**PEARS: (7)** To control Codling Moth, Fruit Tree Leaf Roller, Pear Psylla, Plum Curculio, and Red-Banded Leaf Roller - Use 29 ounces/100 gallons per acre. Do not make more than 2 applications per year. REI is 12 hours. Do not apply within 1 day of harvesting. Do not apply this product within 3 days prior to bloom, during bloom, or until petal fall is complete. May injure Bosc pears in the Northeast.

**PEACHES: (11)** For Spider Mites, Oriental Fruit Moth, and Plum Curculio - Use 29 ounces/100 gallons per acre. Do not make more than 2 applications per year. REI is 24 hours. Spray when damage is first seen or is anticipated. Do not apply within 7 days of harvesting. Do not apply this product within 3 days prior to bloom, during bloom, or until petal fall is complete.

(Fruit continued on next page) ⑧

(Fruit continued)

**STRAWBERRIES: (7)** For the control of Spider Mites, and Aphids - Use 15 ounces/100 gallons per acre. Do not make more than 4 applications per year. REI is 12 hours. Treat when insects first appear. Do not apply this product within 3 days prior to bloom, during bloom, or until petal fall is complete. Do not apply later than 3 days before harvest. **NOTE:** Do not apply when fruit is in bloom and bees are present.

**PECANS: (7)** To control Spider Mites, Aphids, Pecan Nut Casebearer and Pecan Phylloxera - Use 29 ounces/100 gallons per acre and apply with a pressure sprayer. Do not make more than 2 applications per year. REI is 24 hours. Treat when insects are first seen or their damage is anticipated. Do not apply within 7 days of harvesting. Do not apply this product within 3 days prior to bloom, during bloom, or until petal fall is complete.

### CITRUS

For control of Black Scale, California Scale, Citricola Scale, Soft Scale and Yellow Scale, Florida Red & Purple Scale, the Mediterranean Fruit Fly, Thrips, and Aphids. (This spray will also suppress Spider Mites that may be present). Apply sprays to give thorough coverage of fruit and the upper and lower sides of leaves and twigs when insects are present or their damage is eminent. Do not apply within 7 days of harvest. All use rates are in 100 gallons of water/acre.

**Do not apply this product within 3 days prior to bloom, during bloom, or until petal fall is complete.**

<b>Product</b>	<b>Ounces of Malathion 50% EC per 100 gallons of water per acre</b>	<b>Max. applications per year</b>	<b>Retreatment Interval</b>	<b>REI (Hours)</b>
Grapefruit.	29 ounces/100 gallons	3	30 days	12
Kumquats	29 ounces/100 gallons	1	none	48
Lemons	29 ounces/100 gallons	3	30 days	12
Limes	29 ounces/100 gallons	3	30 days	12
Oranges	29 ounces/100 gallons	3	30 days	12
Tangerines	29 ounces/100 gallons	3	30 days	12
Tangelos .	29 ounces/100 gallons	3	30 days	12

### STORAGE AND DISPOSAL

Do not contaminate water, food, or feed by storage and disposal.

**PESTICIDE STORAGE:** Malathion 50% EC should be stored in the original unopened container in a secure dry place. Do not contaminate with other pesticide or fertilizers. The product should never be heated above 55°C (131°F), and should not be stored for long periods of time at a temperature in excess of 25°C (77°F).

**PESTICIDE DISPOSAL:** To avoid wastes, use all materials in this container by application according to label directions. If wastes cannot be avoided, offer remaining product to a waste disposal facility or pesticide disposal program (often such programs are run by state or local governments or by industry).

(Storage and Disposal continued on next page)

(Storage and Disposal continued)

**CONTAINER DISPOSAL:** Non refillable container. Do not reuse or refill this container. Offer for recycling if available. Triple rinse container (or equivalent) promptly after emptying. Triple rinse as follows: Empty the remaining contents into application equipment or a mix tank and drain for 10 seconds after the flow begins to drip. Fill the container 1/4 full with water and recap. Shake for 10 seconds. Pour rinsate into application equipment or a mix tank or store rinsate for later use or disposal. Drain for 10 seconds after the flow begins to drip. Repeat this procedure two more times. Then offer for recycling or reconditioning, or puncture and dispose of in a sanitary landfill, or incinerate if allowed by State and local authorities.

#### **CONDITIONS OF SALE AND WARRANTY**

Our recommendations for use of this product are based upon tests believed to be reliable. Follow directions carefully. Timing and method of application, weather and crop conditions, mixtures with other chemicals and other influencing factors in the use of this product are beyond the control of the seller. To the extent consistent with applicable law, Buyer assumes all risks of use, storage, and handling not in strict accordance with the directions and precautions given herewith.

# MALATHION

## 50% E.C.

FOR OUTDOOR USE ONLY

**ACTIVE INGREDIENT:**                      **BY WT.**  
Malathion: 0,0-dimethyl phosphorodithioate  
of diethyl mercaptosuccinate ...      50.0%  
**INERT INGREDIENTS:\*** .....      50.0%  
Total .....                                      100.0%  
\*Contains xylene range aromatic solvent.  
Contains 4.4 lbs. Malathion per gallon.

**KEEP OUT OF  
REACH OF CHILDREN  
CAUTION**


See inside of booklet for continued Precautionary  
Statements and Directions for use.

**Southern Agricultural Insecticides, Inc.**  
P.O. BOX 218  
Palmetto, FL 34220

EPA Reg. No. 829-282    EPA Est. No. 829-FL-1

**Net Contents Liquid:**  
8 ounces (0.237 liters), 1 Pint (0.474 liters), 1 Quart (0.946 liters)

**MIX WITH WATER:**  
**Ornamental Pest Control**  
(1-4 tsp./ gal.)  
**Fruit Insect Control (1-2 tsp./gal.)**  
**Citrus Insect Control (2 tsp./gal.)**  
**Vegetable Gardens (1-2<sup>1/2</sup> tsp./gal.)**



**KEEP OUT OF REACH OF CHILDREN**

**CAUTION**

**FIRST AID  
ORGANOPHOSPHATE**

**IF SWALLOWED:** Immediately call a Poison Control Center. Do not induce vomiting unless told to by a poison control center or doctor. Do not give any liquid to the person. Do not give anything by mouth to an unconscious person.

**IF ON SKIN OR CLOTHING:** Take off contaminated clothing. Rinse skin immediately with plenty of water for 15-20 minutes. Call a poison control center or doctor for treatment advice.

**IF IN EYES:** Hold eye open and rinse slowly and gently with water for 15-20 minutes. Remove contact lenses, if present, after the first 5 minutes, then continue rinsing eye. Call a poison control center or doctor for treatment advice.

**IF INHALED:** Remove person to fresh air. If person is not breathing, call 911 or ambulance, then give artificial respiration, preferably mouth-to-mouth if possible. Call a poison control center or doctor for further treatment advice.

Have the product container or label with you when calling a poison control center or doctor or going for treatment. You may also contact the National Pesticide Information Center at 1-800-7378.

**NOTE TO PHYSICIAN:** Malathion is a cholinesterase inhibitor. Atropine is antidotal. Contains petroleum distillate. May pose aspiration pneumonia hazard.

**PRECAUTIONARY STATEMENTS**  
**HAZARDS TO HUMANS AND DOMESTIC ANIMALS**

**CAUTION:** Harmful if swallowed. Harmful if absorbed through skin. Causes moderate eye irritation. Avoid contact with skin, eyes or clothing. Prolonged or frequently repeated skin contact may cause allergic reactions in some individuals. Wash thoroughly with soap and water after handling and before eating, drinking, chewing gum, using tobacco, or using the toilet.

**PERSONAL PROTECTIVE EQUIPMENT (PPE):** Handlers must wear long-sleeve shirt, long pants, and shoes plus socks. Follow manufacturer's instructions for cleaning/maintaining PPE. If no such instructions for washables exist, use detergent and hot water. Keep and wash PPE separately from other laundry. Discard clothing and other absorbent material that have been drenched or heavily contaminated with the product's concentrate. Do not reuse them.

Some materials that are chemical-resistant to this product are barrier laminate or viton. Wear long sleeved shirt and long pants, shoes plus socks, and chemical resistant gloves.

**USER SAFETY RECOMMENDATIONS**

Users should wash hands before eating, drinking, chewing gum, using tobacco, or using the toilet. Users should remove clothing/PPE immediately if pesticide gets inside. Then wash thoroughly and put on clean clothing. Users should remove PPE immediately after handling this product. Wash the outside of gloves before removing. As soon as possible, wash thoroughly and change into clean clothing.

#### **ENVIRONMENTAL HAZARDS**

This pesticide is toxic to fish and aquatic invertebrates. Drift and runoff may be hazardous to aquatic organisms in water adjacent to treated areas.

Do not apply directly to water, or to areas where surface water is present, or to intertidal areas below the mean highwater mark. Do not contaminate water when disposing of equipment wash water or rinsate. Drift and runoff may be hazardous to aquatic organisms in water adjacent to treated areas. Avoid drift or run off into storm drains, drainage ditches, or surface waters. Applying this product in calm weather when rain is not predicted for the next 24 hours will help to maximize the chances that wind, or rain will not blow or wash pesticide off the treatment area. Rinsing application equipment over the treated area will help avoid run off to water bodies or drainage systems.

This pesticide is highly toxic to bees exposed to direct treatment on blooming crops or weeds. Do not apply this product or allow it to drift to blooming crops or weeds while bees are actively visiting the treatment area.

Reporting Ecological Incidents: To report ecological incidents, including mortality, injury, or harm to plants and animals, call 941-722-3285.

#### **PHYSICAL OR CHEMICAL HAZARDS**

**Combustible: Do not use or store** near heat or open flame.



## DIRECTIONS FOR USE

It is a violation of Federal Law to use this product in a manner inconsistent with its labeling.

### PRECAUTIONS AND RESTRICTIONS

- DO NOT APPLY THIS PRODUCT IN A WAY THAT WILL CONTACT ANY PERSON OR PET, EITHER DIRECTLY OR THROUGH DRIFT.
- Do not allow people or pets to enter the treated area until sprays have dried.
- DO NOT APPLY THIS PRODUCT THROUGH ANY TYPE OF IRRIGATION SYSTEM.
- For outdoor use only.
- Do not apply within 25 feet of aquatic habitats (such as, but not limited to, lakes, reservoirs, rivers, permanent streams, wetlands or natural ponds, estuaries and commercial fish farm ponds).
- Do not apply directly to sewers or storm drains, or to any area like a drain or gutter where drainage to sewers, storm drains, water bodies, or aquatic habitat can occur.
- Do not allow the product to enter any drain during or after application.
- Do not apply directly to impervious horizontal surfaces such as sidewalks, driveways, and patios except as a spot or crack-and-crevice treatment.
- Do not apply to vertical surfaces directly above pervious or impervious surfaces that drain into ditches, storm drains, gutters, or surface waters.
- Do not apply or irrigate to the point of runoff.
- Do not apply this product when a storm event likely to produce runoff from the treated area is forecasted (by NOAA/National Weather Service, or other similar forecasting service) to occur within 24 hours following application.

Following best management practices can help reduce risk to terrestrial pollinators. Examples of best management practices include applying pesticides in the evening and at night when pollinators are not foraging and avoiding applications to flowering plants. For additional resources on pollinator best management practices, visit <https://www.epa.gov/pollinator-protection/find-best-management-practices-protect-pollinators>.

**Reporting Ecological Incidents:** To report ecological incidents, including mortality, injury, or harm to plants and animals, call 941-722-3285.

**Resistance-Management Recommendations:** For resistance management, Malathion contains a Group 1B insecticide. Any insect population may contain individuals naturally resistant to malathion and other Group 1B insecticides. The resistant individuals may dominate the insect population if this group of insecticides are used repeatedly in the same fields. Appropriate resistance-management strategies should be followed.

## VEGETABLES

- Application equipment limited to hand-pump sprayers, hose-end sprayers, and sprinkler cans.

- Do not apply more than two applications per year.

- Minimum retreatment interval is 10 days.

- Thoroughly spray plants particularly the undersides of leaves and the developing fruit.

- The retreatment interval is indicated by the number in ( ) following the crop. The number represents the minimum days between applications.

- The REI is the Restricted Entry Interval. The number following REI represents the minimum hours between application and safe handling of the plants.

- **The following rates are mixed in 1 gallon of water. Use 1 gallon of the mixed spray per 500 sq. ft.**

**CELERY:** (7) For Aphids, Spider Mites - Use 2 tsps. per gallon. REI is 24 hours. Do not make more than 2 applications per year. Do not apply within 7 days of harvest.

**CUCUMBER:** (7) For Aphids, Spider Mites - Use 2 tsps. per gallon REI is 24 hours. Do not make more than 2 applications per year. Do not apply within 1 day of harvest.

**SQUASH, summer:** (7) For Aphids, Spider Mites, Cucumber Beetle, Leaf Hopper - Use 2 tsps. per gallon. Do not apply unless plants are dry. REI is 24 hours. Do not make more than 3 applications per year. Do not apply within 1 day of harvest.

**SQUASH, winter:** (7 days) For Aphids, Spider Mites, Cucumber Beetle, Leaf Hopper - Do not apply unless plants are dry. Use 2 tsps. per gallon. REI is 12 hours. Do not make more than 3 applications per year. Do not apply within 1 day of harvest.

**CANTALOUPE:** (7) For Aphids, Spider Mites, Cucumber Beetle, Leaf Hopper - Use 2 tsps. per gallon. REI is 12 hours. Do not make more than 2 applications per year. Do not apply within 1 day of harvest. Do not apply unless plants are dry.

**CABBAGE:** (7) For Aphids, Imported Cabbage Worm, Cabbage Looper, Leaf Hopper - Use 2 tsps. per gallon. Do not make more than 3 applications per year. REI is 48 hours. Do not apply within 7 days of harvest.

**BROCCOLI:** (7) For Aphids, Imported Cabbage Worm, Cabbage Looper, Leaf Hopper - Use 2 1/2 tsps. per gallon. Do not make more than 2 applications per year. REI is 48 hours. Do not apply within 2 days of harvest.

**KALE:** (5) For Aphids, Imported Cabbage Worm, Cabbage Looper, Leaf Hopper - Use 2 tsps. per gallon. Do not make more than 3 applications per year. REI is 12 hours. Do not apply within 7 days of harvest.

**MUSTARD:** (5) For Aphids, Imported Cabbage Worm, Cabbage Looper, Leaf Hopper - Use 2 tsps. per gallon. REI is 12 hours. Do not make more than 3 applications per year. Do not apply within 7 days of harvest.

**TURNIPS:** (greens (5), roots (7)) For Aphids, Imported Cabbage Worm, Cabbage Looper, Leaf Hopper - Use 2.5 tsps. per gallon. Do not make more than 2 applications per year. REI is 12 hours. Do not apply within 1 day of harvest.

**HEAD LETTUCE:** (6) For Aphids, Imported Cabbage Worm, Cabbage Looper, Leaf Hopper - Use 2 tsps. per gallon. Do not make more than 2 applications per year. REI is 24 hours. Do not apply within 14 days of harvest.

**EGGPLANT:** (5) For Aphids, Spider Mites - Use 1 tsp. per gallon. Do not make more than 4 applications per year. REI is 12 hours. Do not apply within 3 days of harvest.

**ONIONS:** (7) For Thrips - Use 2 tsps. per gallon. Do not make more than 2 applications per year. REI is 12 hours. Do not apply within 3 days of harvest. (vegetables continued in next panel)

(vegetables continued)

**PEPPERS:** (5) For Aphids - 1 tsp. per gallon. Do not make more than 2 applications per year. REI is 12 hours. Do not apply within 3 days of harvest.

**POTATOES:** (7) For Aphids, Leaf Hoppers, Mealybugs - Use 1 tsp. per gallon. Do not make more than 2 applications per year. REI is 12 hours. No waiting time till harvest.

**RADISHES:** (7) For Aphids - Use 2 tsps. per gallon. Do not make more than 2 applications per year. REI is 12 hours. Do not apply within 7 days of harvest.

**TOMATOES:** (5) For Aphids, Spider Mites - Use 2 tsps. per gallon. Do not make more than 4 applications per year. REI is 12 hours. Do not apply within 1 day of harvest.

#### **FRUIT**

- Application equipment limited to hand-pump sprayers, hose-end sprayers, and sprinkler cans.

- Do not apply more than two applications per year.

- Minimum retreatment interval is 10 days.

- The retreatment interval is indicated by the number in ( ) following the crop. The number represents the minimum days between applications.

- The REI is the Restricted Entry Interval. The number following REI represents the minimum hours between application and safe handling of the plants.

- **The following rates are mixed in 1 gallon of water. Use 1 gallon of the mixed spray per 500 sq. ft.**

**GRAPES:** (14) For Leaf Hoppers, Spider Mites, Mealybugs - Use 2 tsps. per gallon. Do not make more than 2 applications per year. REI is 3 days for girdling and tying; 24 hrs for all other activities. Do not apply later than 3 days before harvesting. May cause injury to foliage. Check with local Agricultural Authorities.

**CHERRIES:** (3) For Black Cherry Aphids and Fruit Tree Leaf Rollers - Use 2 tsps. per gallon. Do not make more than 4 applications per year. REI is 12 hours. Thoroughly spray trees. Do not apply later than 3 days before harvest. May injure foliage. Do not apply this product within 3 days prior to bloom, during bloom, or until petal fall is complete

(fruit continued in below panel)

(fruit continued)

**PEARS:** (7) To control Codling Moth, Fruit Tree Leaf Roller, Pear Psylla, Plum Curculio, and Red-Banded Leaf Roller - Use 2 tsps. per gallon. Do not make more than 2 applications per year. REI is 12 hours. Do not apply later than 1 day before harvest. May injure Bosc pears in the Northeast. Do not apply this product within 3 days prior to bloom, during bloom, or until petal fall is complete.

**PEACHES:** (11) For Spider Mites, Oriental Fruit Moth, and Plum Curculio - Use 2 tsps. per gallon. Do not make more than 2 applications per year. REI is 24 hours. Spray when damage is first seen or is anticipated. Do not apply later than 7 days before harvest. Do not apply this product within 3 days prior to bloom, during bloom, or until petal fall is complete.

**STRAWBERRIES:** (7) For the control of Spider Mites, and Aphids - Use 1 tsp. per gallon. Do not make more than 4 applications per year. REI is 12 hours. Treat when insects first appear. Do not apply later than 3 days before harvest. **NOTE:** Do not apply when fruit is in bloom and bees are present.

**PECANS:** (7) To control Spider Mites, Aphids, Pecan Nut Casebearer and Pecan Phylloxera - Use 2 tsps. per gallon and apply with a pressure sprayer. Do not make more than 2 applications per year. REI is 24 hours. Treat when insects are first seen or their damage is anticipated. Do not apply within 7 days of harvest. Do not apply this product within 3 days prior to bloom, during bloom, or until petal fall is complete.

#### **OUTDOOR CITRUS**

For control of Black Scale, California Scale, Citricola Scale, Soft Scale and Yellow Scale, Florida Red & Purple Scale, the Mediterranean Fruit Fly, Thrips and Aphids. (This spray will also suppress Spider Mites that may be present.) Apply sprays to give thorough coverage of fruit and the upper and lower sides of leaves and twigs when insects are present or their damage is eminent.

(outdoor citrus continued in next panel)

(outdoor citrus continued)

**Restriction:** Do not apply when trees are in bloom or within 7 days of harvest.

**Restriction:** Do not apply this product within 3 days prior to bloom, during bloom, or until petal fall is complete.

The following rates are mixed in 1 gallon of water. Use 1 gallon of the mixed spray per 500 sq. ft.

<u>Product</u>	<u>Ounces/500</u> <u>sq. ft.</u>	<u>Max.</u> <u>applications</u> <u>per year</u>	<u>Retreatment</u> <u>Interval</u>	<u>REI</u> <u>Hours</u>
Grapefruit	2 tsp./gallon	3	30 days	12
Kumquats	2 tsp./gallon	1	None	48
Lemons	2 tsp./gallon	3	30 days	12
Limes	2 tsp./gallon	3	30 days	12
Oranges	2 tsps./gallon	3	30 days	12
Tangerines	2 tsps./gallon	3	30 days	12
Tangelos	2 tsps./gallon	3	30 days	12

**ADULT MOSQUITO CONTROL**  
Household/domestic dwelling (perimeter outdoor only)

- Dilute Malathion 50% E.C. at the rate of 4 1/2 oz. per gallon of water.
- Restriction: Do not apply to any building that houses animals.
- Avoid spray contact with auto finishes as product may produce spotting.
- Apply a coarse spray in a two-foot wide or less band from the base of a man-made structure and up to two feet on wall surfaces.
- Do not apply more than 4 applications per year.
- Minimum retreatment interval is 7-days.

## OUTDOOR ORNAMENTALS

**Restrictions on Ornamental Plants, Vines, Shrubs and Ornamental/Shade Trees:**

- Spot treatment only
- Do not apply more than two applications per year.
- Minimum retreatment interval is 10 days.

For use on listed insects. Do not apply to Boston, Pteris or Maidenhair Ferns, Viburnum, Lantana, Crassula, Canaerti Junipers, Petunias, or small leaf Spirea since injury may result.

Pest Controlled	Rate/ 1 Gallon of water	Minimum Retreatment Interval	Reentry Interval	Maximum Applications per year	Comments
Aphids, Spider Mites	1.5 teaspoons	10 days	12 hours	6	
Bagworms, Birch Leaf Miner, Boxwood Leaf Miner	2 teaspoons	10 days	12 hours	4	
European Pine Shoot Miner, Boxwood Leaf Miner	1.5 teaspoons	10 days	12 hours	6	
Bagworms, Birch Leaf Miner, Boxwood Leaf Miner	2 teaspoons	10 days	12 hours	4	
European Pine Shoot Moth, Four-lined Leaf Bug, Japanese Beetle Adult, Potato Leafhopper, Rose Leafhopper, Tarnished Plant Bug, Thrip	1.5 teaspoons	10 days	12 hours	6	
Lace Bug	1 teaspoons	10 days	12 hours	8	
Mealybugs, Whiteflies	1 teaspoons	10 days	12 hours	6	
Oak Kermes	2 teaspoons	10 days	12 hours	3	
Tent Caterpillar	2 teaspoons	10 days	12 hours	4	

(outdoor ornamentals continued in next panel)

(outdoor ornamentals continued)

<b>Pest Controlled</b>	<b>Rate/ 1 Gallon of water</b>	<b>Minimum Retreatment Interval</b>	<b>Reentry Interval</b>	<b>Maximum Applications per year</b>	<b>Comments</b>
Oyster Shell Scale	1 teaspoons	10 days	12 hours	8	
Euonymus Scale, Scurfy Scale	1.5 teaspoons	10 days	12 hours	6	
Azalea Scale, Magnolia Scale, Pine Leaf Scale	2.25 teaspoons	10 days	12 hours	4	
Fletcher Scale, Florida Red Scale, Juniper Scale	2 teaspoons	10 days	12 hours	4	Apply when scale Crawlers have settled on foliage.
Black Scale Crawlers, Soft Brown Scale	2.25 teaspoons	10 days	12 hours	3	
Monterey Pine Scale	2.5 teaspoons	10 days	12 hours	3	
Pine Needle Scale	4 teaspoons	10 days	12 hours	2	
Wax Scale	4 teaspoons	10 days	12 hours	2	Apply in spring when crawlers are active

### **STORAGE AND DISPOSAL**

Do not contaminate water, food, or feed by storage and disposal.

**PESTICIDE STORAGE:** Malathion 50% EC should be stored in the original unopened container in a secure dry place. Do not contaminate with other pesticide or fertilizers. The product should never be heated above 55° C (131° F), and should not be stored for long periods of time at a temperature in excess of 25° C (77° F).

**PESTICIDE DISPOSAL AND CONTAINER HANDLING:** Nonrefillable container. Do not reuse or refill this container.

**If empty:** Place in trash or offer for recycling if available.

**If partly filled:** Call your local solid waste agency or 1-800-CLEANUP for disposal instructions. Never place unused product down any indoor or outdoor drain.

### **CONDITIONS OF SALE AND WARRANTY**

Our recommendations for use of this product are based upon tests believed to be reliable. Follow directions carefully. Timing and method of application, weather and crop conditions, mixtures with other chemicals and other influencing factors in the use of this product are beyond the control of the seller. To the extent consistent with applicable law, Buyer assumes all risks of use, storage, and handling not in strict accordance with the directions and precautions given herewith.