

829-282

01/25/2013

1/15

UNITED STATES ENVIRONMENTAL PROTECTION AGENCY
WASHINGTON, D.C. 20460



OFFICE OF
CHEMICAL SAFETY AND
POLLUTION PREVENTION

JAN 25 2013

Cynthia Huffman
Registrations
Southern Agricultural Insecticides, Inc.
P.O. Box 218
Palmetto, FL 34220

Dear Ms. Huffman:

Subject: Submission of amended labeling per Use Deletion Guidance 12/30/08 and revised May 2009 Malathion RED Label Table
EPA Reg. No. 829-282, Submissions dated November 30, 2009

The proposed labeling referred to above, submitted in connection with registration under the Federal Insecticide, Fungicide, and Rodenticide Act (FIFRA), is acceptable provided that you submit two copies of your final printed label before you release the product for shipment. Products shipped after 12 months from the date of this amendment or the next printing of the label whichever occurs first, must bear the new revised label. Your release for shipment of the product bearing the amended label constitutes acceptance of these conditions. If these conditions are not complied with, the registration will be subject to cancellation in accordance with FIFRA sec. 6(e).

Your product has met and is in compliance with the risk mitigation provisions of the 2009 Malathion RED and therefore your product is reregistered pursuant to FIFRA § 4(g)(2)(C). But note, EPA is currently reassessing the cumulative impact of organophosphates and that review may impact your product once complete.

The basic Confidential Statement of Formula (CSF) dated 11/30/09 is acceptable. All other CSF's including Alternatives have been superseded by this new basic. This has been added to your record. A stamped copy is enclosed for your records. If you have any questions, please contact Marianne Lewis at (703) 308-8043 or lewis.marianne@epa.gov.

Regards,

Venus Eagle, PM 01
Insecticide-Rodenticide Branch
Registration Division (7505P)

Enclosure



Intended for Commercial Use-
Sublabel A

ACCEPTED

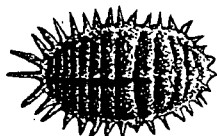
1/25/13



Under the Federal Insecticide, Fungicide,
and Rodenticide Act, as amended, for the
pesticide registered under:

EPA Reg. No: 829-282

MALATHION



50% E.C.

ACTIVE INGREDIENT: BY WT.

Malathion: 0,0-dimethyl phosphorodithioate
of diethyl mercaptosuccinate 50.0%

INERT INGREDIENTS:* 50.0%

*Contains xylene range aromatic solvent.
Contains 4.4 lbs. Malathion per gallon.



0 51538 45778 1

CAUTION

KEEP OUT OF REACH OF CHILDREN

FIRST AID

ORGANOPHOSPHATE

IF SWALLOWED: Immediately call a Poison Control Center or doctor. Do not induce vomiting unless told to by a poison control center or doctor. Do not give any liquid to the person. Do not give anything by mouth to an unconscious person.

IF ON SKIN OR CLOTHING: Take off contaminated clothing. Rinse skin immediately with plenty of water for 15-20 minutes. Call a poison control center or doctor for treatment advice.

IF IN EYES: Hold eye open and rinse slowly and gently with water for 15-20 minutes. Remove contact lenses, if present, after the first 5 minutes, then continue rinsing eye. Call a poison control center or doctor for treatment advice.

IF INHALED: Move person to fresh air. If person is not breathing, call 911 or ambulance, then give artificial respiration, preferably mouth-to-mouth if possible. Call a poison control center or doctor for further treatment advice.

Have the product container or label with you when calling a poison control center or doctor or going for treatment. You may also contact the National Pesticide Information Center at 1-800-858-7378.

NOTE TO PHYSICIAN: Malathion is a cholinesterase inhibitor. Atropine is antidotal.

Contains petroleum distillate. May pose aspiration pneumonia hazard.

See inside of label for Additional Precautionary Statements and Directions for Use. Follow directions on side of label to open.

EPA EST. NO. 829-FL-1 (3); 829-NC-1 (4); 829-NC-2 (5) Number following Est. No. corresponds to first digit in Lot No.

Southern Agricultural Insecticides, Inc.

P.O. Box 218
Palmetto, FL 34220
941-722-3285

P.O. Box 429
Hendersonville, NC 28793

P.O. Box 85
Boone NC 28607

EPA Reg. No. 829-282

Net Contents Liquid: 1 Gallon (3.785 liters), 2.5 Gallons (9.46 liters)

PRECAUTIONARY STATEMENTS

HAZARDS TO HUMANS & DOMESTIC ANIMALS

CAUTION: Harmful if swallowed. Harmful if absorbed through the skin. Causes moderate eye irritation. Avoid contact with skin, eyes or clothing. Prolonged or frequently repeated skin contact may cause allergic reaction in some individuals.

PERSONAL PROTECTIVE EQUIPMENT

Some materials that are chemical-resistant to this product are barrier laminate or viton. If you want more options, follow the instructions for category G on an EPA chemical resistance category selection chart. Mixers, loaders, applicators, flaggers, and other handlers must wear: Long sleeved shirt and long pants, shoes plus socks, chemical resistant gloves, chemical resistant headgear (air blast only).

USER SAFETY REQUIREMENTS

Follow manufacturer's instructions for cleaning/maintaining PPE. If no such instructions for washables exist, use detergent and hot water. Keep and wash PPE separately from other laundry. Discard clothing and other absorbent materials that have been drenched or heavily contaminated with this product's concentrate. Do not reuse them.

USER SAFETY RECOMMENDATIONS

Users should wash hands before eating, drinking, chewing gum, using tobacco, or using the toilet. Users should remove clothing/PPE immediately if pesticide gets inside. Then wash thoroughly and put on clean clothing. Users should remove PPE immediately after handling this product. Wash the outside of gloves before removing. As soon as possible, wash thoroughly and change into clean clothing.

ENVIRONMENTAL HAZARDS

This pesticide is toxic to aquatic organisms, including fish and invertebrates. This product may contaminate water through drift of spray in wind. This product has a high potential for runoff after application. Use care when applying in or to an area which is adjacent to any body of water, and do not apply when weather conditions favor drift from target area. Poorly draining soils and soils with shallow water tables are more prone to produce runoff that contains this product.

A level, well maintained vegetative buffer strip between areas to which this product is applied and surface water features such as ponds, streams, and springs will reduce the potential for contamination of water from rainfall-runoff. Runoff of this product will be reduced by avoiding applications when rainfall is forecasted to occur within 48 hours. Do not apply directly to water, or to areas where surface water is present or to intertidal areas below the mean high water mark. Do not contaminate water when disposing of equipment washwater or rinsate.

This pesticide is highly toxic to bees exposed to direct treatment on blooming crops or weeds. Do not apply this product or allow it to drift to blooming crops or weeds while bees are actively visiting the treatment area.

PHYSICAL OR CHEMICAL HAZARDS

Combustible: Do not use or store near heat or open flame.

DIRECTIONS FOR USE

It is a violation of Federal Law to use this product in a manner inconsistent with its labeling. For any requirements specific to your State or Tribe, consult the agency responsible for pesticide regulation. Do not apply this product in a way that will contact workers or other persons, either directly or through drift. Only protected handlers may be in the area during application.

AGRICULTURAL USE REQUIREMENTS

Use this product only in accordance with its labeling and with the Worker Protection Standard, 40 CFR Part 170. This Standard contains requirements for the protection of agricultural workers on farms, forests, and nurseries, and handlers of agricultural pesticides. It contains requirements for training, decontamination, notification. It also contains specific instructions and exceptions pertaining to the statements on this labeling about personal protective equipment (PPE), restricted-entry intervals. The requirements in this box only apply to uses of this product that are covered by the Worker Protection Standard. Do not apply this product in a way that will contact workers or other persons, either directly or through drift. Only protected handlers may be in the area during application.

Do not enter or allow worker entry into treated areas during the restricted entry interval (REI). The REI for each crop is listed in the directions for use associated with each crop.

PPE required for early entry to treated areas that is permitted under the Worker Protection Standard and that involves contact with anything that has been treated, such as plants, soil, or water, is: Coveralls, Shoes plus Socks and, Chemical-resistant gloves made of any waterproof material.

NON-AGRICULTURAL USE REQUIREMENTS

The requirements in this box apply to uses of this product that are NOT within the scope of the Worker Protection Standard for agricultural pesticides (40 CFR Part 170). The WPS applies when this product is used to produce agricultural plants on farms; forests, or nurseries. Do not enter or allow others to enter, until sprays have dried.

PRECAUTIONS AND RESTRICTIONS

- * DO NOT APPLY THIS PRODUCT THROUGH ANY TYPE OF IRRIGATION SYSTEM.
- * DO NOT APPLY BY AERIAL APPLICATION.

SPRAY DRIFT REQUIREMENTS

Observe the following requirements when spraying in the vicinity of aquatic areas such as, but not limited to lakes; reservoirs; rivers; permanent streams; marshes or natural ponds; estuaries and commercial fish ponds.

Droplet Size

Use the largest droplet size consistent with acceptable efficacy. Formation of very small droplets may be minimized by appropriate nozzle selection, by orienting nozzles away from the air stream as much as possible, and by avoiding excessive spray boom pressure.

For groundboom applications, use only medium or coarser spray nozzles according to ASAE (S572) definition for standard nozzles, or a volume mean diameter of (VMD) of 300 microns or greater for spinning atomizer nozzles. In conditions of low humidity and high temperatures, applicators should use a coarser droplet size.

Wind Direction and Speed

Make ground applications when the wind velocity favors on target product deposition (approximately 3 to 10 mph). Do not apply when wind velocity exceeds 15 mph. Avoid applications when wind gusts approach 15 mph. Wind speed must be measured adjacent to the application site on the upwind side, immediately prior to application.

Temperature Inversion

Do not make ground applications into areas of temperature inversions.

Inversions are characterized by stable air and increasing temperatures with increasing distance above the ground. Mist or fog may indicate the presence of an inversion in humid areas. Where permissible by local regulations, the applicator may detect the presence of an inversion by producing smoke and observing a smoke layer near the ground surface.

In conditions of low humidity and high temperatures, applicators should use a coarser droplet size.

Additional Requirements for Ground Applications

Spray should be released at the lowest height consistent with pest control and flight safety. Applications more than 10 feet above the crop canopy should be avoided. For groundboom applications, apply with nozzle height no more than 4 feet above the ground or crop canopy.

OUTDOOR ORNAMENTALS

Ornamental Herbaceous Plants, Shade Trees, Ornamental Woody Shrubs, Ornamental Non-Flowering Plants
For use on outdoor ornamentals to control the listed insects. Do not apply to Boston, Pteris or Maidenhair Ferns, Viburnum, Lantana, Crassula, Canaerti Junipers, Petunias, or small leaf Spirea since injury may result.

Pest Controlled	Rate/ 100 Gallons Water	Minimum Retreatment Interval	Rentry Interval	Maximum Applications per year	Comments
Aphids, Sipder Mites	1.5 pints	10 days	12 hours	6	
Bagworms, Birch Leaf Miner, Boxwood Leaf Miner	2 pints	10 days	12 hours	4	
European Pine Shoot	1.5 pints	10 days	12 hours	6	
Bagworms, Birch Leaf Miner, Boxwood Leaf Miner	2 pints	10 days	12 hours	4	
European Pine Shoot	1.5 pints	10 days	12 hours	6	
Moth, Four-lined Leaf Bug, Japanese Beetle Adult, Potato Leafhopper, Rose-Leafhopper, Tarnished Plant Bug Thrip.					
Lace Bug	1 pint	10 days	12 hours	8	
Mealybugs, Whiteflies	1 pint	10 days	12 hours	6	
Oak Kermes	2 pints	10 days	12 hours	3	
Tent Caterpillar	2 pints	10 days	12 hours	4	
Oyster Shell Scale	1 pint	10 days	12 hours	8	
Euonymus Scale, Scurfy Scale	1.5 pints	10 days	12 hours	6	
Azalea Scale, Magnolia Scale, Pine Leaf Scale	2.25 pints	10 days	12 hours	4	
Fletcher Scale, Florida Red Scale, Juniper Scale	2 pints	10 days	12 hours	4	Apply when scale Crawlers have settled on foliage.
Black Scale Crawlers, Soft Brown Scale	2.25 pints	10 days	12 hours	3	
Monterey Pine Scale	2.5 pints	10 days	12 hours	3	
Pine Needle Scale	4 pints	10 days	12 hours	2	
Wax Scale	4 pints	10 days	12 hours	2	Apply in spring when crawlers are active.

The proper use of a spreader sticker will enhance insect control, especially with scale. Treat when insects are first seen and damage is anticipated.

VEGETABLES

Thoroughly spray plants particularly the undersides of leaves and the developing fruit. All use rates are in 100 gallons of water/acre.

The retreatment interval is indicated by the number in () following the crop. The number represents the minimum days between applications.

*REI is the Restricted Entry Interval.

CELERY: (7) For Aphids, Spider Mites -Use 29 ounces/100 gallons per acre. REI is 24 hours. Do not make more than 3 applications per year. Do not apply within 7 days of harvest.

CUCUMBER: (7) For Aphids, Spider Mites -Use 29 ounces/100 gallons per acre. REI is 24 hours. Do not make more than 3 applications per year. Do not apply within 1 day of harvest.

SQUASH summer (7) For Aphids, Spider Mites, Cucumber Beetle, Leaf Hopper - Use 29 ounces/100 gallons per acre. Do not apply unless plants are dry. REI is 24 hours. Do not make more than 5 applications per year. Do not apply within 1 day of harvest.

SQUASH, winter: (7) For Aphids, Spider Mites, Cucumber Beetle, Leaf Hopper - Do not apply unless plants are dry. Use 29 ounces/100 gallons per acre. REI is 12 hours. Do not make more than 3 applications per year. Do not apply within 1 day of harvest.

CANTALOUPE: (7) For Aphids, Spider Mites, Cucumber Beetle, Leaf Hopper - Use 29 ounces/100 gallons per acre. REI is 12 hours. Do not make more than 2 applications per year. Do not apply within 1 day of harvest. Do not apply unless plants are dry.

CABBAGE: (7) For Aphids, Imported Cabbage Worm, Cabbage Looper, Leaf Hopper- Use 29 ounces/100 gallons per acre. Do not make more than 6 applications per year. REI is 48 hours. Do not apply within 7 days of harvest.

BROCCOLI: (7) For Aphids, Imported Cabbage Worm, Cabbage Looper, Leaf Hopper - Use 36 ounces/100 gallons per acre. Do not make more than 2 applications per year. REI is 48 hours. Do not apply within 7 days of harvest.

KALE: (5) For Aphids, Imported Cabbage Worm, Cabbage Looper, Leaf Hopper- Use 29 ounces/100 gallons per acre. Do not make more than 3 applications per year. Do not apply within 7 days of harvest. REI is 12 hours.

MUSTARD: (5) For Aphids, Imported Cabbage Worm, Cabbage Looper, Leaf Hopper- Use 29 ounces/100 gallons per acre. REI is 12 hours. Do not make more than 3 applications per year. Do not apply within 7 days of harvest.

TURNIPS: (greens 5, roots 7) For Aphids, Imported Cabbage Worm, Cabbage Looper, Leaf Hopper - Use 36 ounces/100 gallons per acre. Do not make more than 3 applications per year. REI is 12 hours. Do not apply within 7 days of harvest.

HEAD LETTUCE: (6) For Aphids, Imported Cabbage Worm, Cabbage Looper, Leaf Hopper - Use 29 ounces/100 gallons per acre. Do not make more than 3 applications per year. REI is 24 hours. Do not apply within 14 days of harvest.

EGGPLANT: (5) For Aphids, Spider Mites - Use 15 ounces/100 gallons per acre. Do not make more than 10 applications per year. REI is 12 hours. Do not apply within 3 days of harvest.

ONIONS: (7) For Thrips - Use 29 ounces/100 gallons per acre. Do not make more than 3 applications per year. **REI is 12 hours.** Do not apply within 3 days of harvest.

PEPPERS: (5) For Aphids - 15 ounces/100 gallons per acre. Do not make more than 4 applications per year. **REI is 12 hours.** Do not apply within 3 days of harvest.

POTATOES: (7) For Aphids, Leaf Hoppers, Mealybugs -15 ounces/100 gallons per acre. Do not make more than 4 applications per year. **REI is 12 hours.** No waiting time till harvest.

RADISHES: (7) For Aphids - Use 29 ounces/100 gallons per acre. Do not make more than 3 applications per year. **REI is 12 hours.** Do not apply within 7 days of harvest.

RICE (FIELD) (7) To control Grasshoppers, Rice Stink Bug and Rice Leaf Minor - use 1 1/2 - 2 pt. per acre. Use higher rate for rice leaf minor. Apply as a coarse spray in sufficient water (usually 3-20 gal./A depending on equipment) for thorough coverage. Apply when wind is 5 M.P.H. or below to avoid drift. May be applied three times per year at the 1 1/2 pint rate. The maximum application per year is 2 at the 2 pint rate. The **REI is 12 hours.** Do not apply within 7 days of harvest.

Broadcast use only over intermittently flooded areas. Application may not be made around bodies of water where fish or shellfish are grown and/or harvested commercially.

TOMATOES: (5) For Aphids, Spider Mites -Use 29 ounces/100 gallons per acre. Do not make more than 5 applications per year. The **REI is 12 hours.** Do not apply within 7 days of harvest.

FRUIT

The retreatment interval is indicated by the number in () following the crop. The number represents the minimum days between applications. All use rates are in 100 gallons of water/acre. *REI is the Restricted Entry Interval.

GRAPES: (14) For Leaf Hoppers, Spider Mites, Mealybugs - Use 29 ounces/100 gallons per acre. Do not make more than 3 applications per year. **REI is 3 days** for girdling and tying; 24 hrs for all other activities. Do not apply within 3 days of harvesting. May cause injury to foliage. Check with local Agricultural Authorities.

CHERRIES: (14) For Black Cherry Aphids and Fruit Tree Leaf Rollers - Use 29 ounces/100 gallons per acre. Do not make more than 6 applications per year. **REI is 12 hours.** Thoroughly spray trees. Do not apply within 3 days of harvesting. May injure foliage.

PEARS: (7) To control Codling Moth, Fruit Tree Leaf Roller, Pear Psylla, Plum Curculio, and Red-Banded Leaf Roller- Use 29 ounces/100 gallons per acre. Do not make more than 2 applications per year. **REI is 12 hours.** Do not apply within 2 day of harvesting. May injure Bosc pears in the Northeast.

PEACHES: (11) For Spider Mites, Oriental Fruit Moth, and Plum Curculio - Use 29 ounces/100 gallons per acre. Do not make more than 7 applications per year. **REI is 24 hours.** Spray when damage is first seen or is anticipated. Do not apply within 7 days of harvesting.

STRAWBERRIES: (7) For the control of Spider Mites, and Aphids - Use 15 ounces/100 gallons per acre. Do not make more than 4 applications per year. **REI is 12 hours.** Treat when insects first appear. Do not apply later than 3 days before harvest. **NOTE:** Do not apply when fruit is in bloom and bees are present.

PECANS: (7) To control Spider Mites, Aphids, Pecan Nut Casebearer and Pecan Phylloxera - Use 29 ounces/100 gallons per acre and apply with a pressure sprayer. Do not make more than 4 applications per year. **REI is 24 hours.** Treat when insects are first seen or their damage is anticipated. Do not apply within 7 days of harvesting.

CITRUS

For control of Black Scale, California Scale, Citricola Scale, Soft Scale and Yellow Scale, Florida Red & Purple Scale, the Mediterranean Fruit Fly, Thrips and Aphids. (This spray will also suppress Spider Mites that may be present.) Apply sprays to give thorough coverage of fruit and the upper and lower sides of leaves and twigs when insects are present or their damage is eminent. Do not apply when trees are in bloom or within 7 days of harvest. All use rates are in 100 gallons of water/acre.

Product	oz/acre	Max. applications per year	Retreatment Interval	Hours REI
Grapefruit/ not Calif.	29 ounces/100 gallons	4	30 days	12
Kumquats	29 ounces/100 gallons	4	30 days	48
Lemons/ FL. only	29 ounces/100 gallons	1	none	12
Limes / not Calif.	29 ounces/100 gallons	4	30 days	12
Oranges / not Calif.	29 ounces/100 gallons	4	30 days	12
Tangerines / not Calif.	29 ounces/100 gallons	4	30 days	12
Tangelos / not Calif.	29 ounces/100 gallons	4	30 days	12

ADULT MOSQUITO CONTROL

For control of adult mosquitoes. Use on lower outside foundations of homes or as a spot treatment for yards and lawns. Apply spray mixture as a fine mist or fog to lower outside foundations of home or shrubs. Dilute Malathion 50% E.C. at the rate of 4 1/2 oz. per gallon of water. Repeat application as necessary. **Restrictions:** Do not apply to any building that houses animals. Avoid spray contact with auto finishes as product may produce spotting.

STORAGE AND DISPOSAL

Do not contaminate water, food, or feed by storage and disposal.

PESTICIDE STORAGE: Malathion 50% EC should be stored in the original unopened container in a secure dry place. Do not contaminate with other pesticide or fertilizers. The product should never be heated above 55°C (131°F), and should not be stored for long periods of time at a temperature in excess of 25°C(77°F).

PESTICIDE DISPOSAL: To avoid wastes, use all materials in this container by application according to label directions. If wastes cannot be avoided, offer remaining product to a waste disposal facility or pesticide disposal program (often such programs are run by state or local governments or by industry).

CONTAINER DISPOSAL: Non refillable container. Do not reuse or refill this container. Offer for recycling if available. Triple rinse container (or equivalent) promptly after emptying. Triple rinse as follows: Empty the remaining contents into application equipment or a mix tank and drain for 10 seconds after the flow begins to drip. Fill the container 1/4 full with water and recap. Shake for 10 seconds. Pour rinsate into application equipment or a mix tank or store rinsate for later use or disposal. Drain for 10 seconds after the flow begins to drip. Repeat this procedure two more times. Then offer for recycling or reconditioning, or puncture and dispose of in a sanitary landfill, or incinerate if allowed by State and local authorities.

9/15

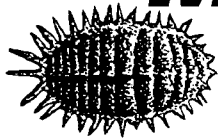
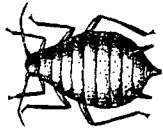
CONDITIONS OF SALE AND WARRANTY

Our recommendations for use of this product are based upon tests believed to be reliable. Follow directions carefully. Timing and method of application, weather and crop conditions, mixtures with other chemicals and other influencing factors in the use of this product are beyond the control of the seller. To the extent consistent with applicable law, Buyer assumes all risks of use, storage, and handling not in strict accordance with the directions and precautions given herewith.

10/15

SA SOUTHERN
50 AG®

Intended for Residential Use -
Sublabel B



MALATHION

50% E.C.

ACTIVE INGREDIENT: BY WT.
Malathion: 0,0-dimethyl phosphorodithioate
of diethyl mercaptosuccinate 50.0%
INERT INGREDIENTS:* 50.0%
*Contains xylene range aromatic solvent.
Contains 4.4 lbs. malathion per gallon.



0 51538 45778 1

CAUTION

KEEP OUT OF REACH OF CHILDREN

FIRST AID

ORGANOPHOSPHATE

IF SWALLOWED: Immediately call a Poison Control Center. Do not induce vomiting unless told to by a poison control center or doctor. Do not give any liquid to the person. Do not give anything by mouth to an unconscious person.

IF ON SKIN OR CLOTHING: Take off contaminated clothing. Rinse skin immediately with plenty of water for 15-20 minutes. Call a poison control center or doctor for treatment advice.

IF IN EYES: Hold eye open and rinse slowly and gently with water for 15-20 minutes. Remove contact lenses, if present, after the first 5 minutes, then continue rinsing eye. Call a poison control center or doctor for treatment advice.

IF INHALED: Remove person to fresh air. If person is not breathing, call 911 or ambulance, then give artificial respiration, preferably mouth-to-mouth if possible. Call a poison control center or doctor for further treatment advice.

Have the product container or label with you when calling a poison control center or doctor or going for treatment. You may also contact the National Pesticide Information Center at 1-800-858-7378.

NOTE TO PHYSICIAN: Malathion is a cholinesterase inhibitor. Atropine is antidotal.

Contains petroleum distillate. May pose aspiration pneumonia hazard.

See inside of label for Precautionary Statements and Directions for Use.
Follow directions on side of label to open.

EPA EST. NO. 829-FL-1 (3); 829-NC-1 (4); 829-NC-2 (5) Number following Est. No. corresponds to first digit in Lot No.

Southern Agricultural Insecticides, Inc.

P.O. Box 218
Palmetto, FL 34220
941-722-3285

P.O. Box 429
Hendersonville, NC 28793

P.O. Box 85
Boone NC 28607

EPA Reg. No. 829-282

Net Contents Liquid: 8 oz., Pint, or Quart.

PRECAUTIONARY STATEMENTS

HAZARDS TO HUMANS & DOMESTIC ANIMALS

CAUTION: Harmful if swallowed. Harmful if absorbed through skin. Causes moderate eye irritation. Avoid contact with skin, eyes or clothing. Prolonged or frequently repeated skin contact may cause allergic reactions in some individuals. Wash thoroughly with soap and water after handling.

PERSONAL PROTECTIVE EQUIPMENT

Some materials that are chemical-resistant to this product are barrier laminate or viton. If you want more options, follow the instructions for category G on an EPA chemical resistance category selection chart. Wear long sleeved shirt and long pants, shoes plus socks, and chemical resistant gloves.

USER SAFETY REQUIREMENTS

Follow manufacturer's instructions for cleaning/maintaining PPE. If no such instructions for washables exist, use detergent and hot water. Keep and wash PPE separately from other laundry. Discard clothing and other absorbent materials that have been drenched or heavily contaminated with this product's concentrate. Do not reuse them.

USER SAFETY RECOMMENDATIONS

Users should wash hands before eating, drinking, chewing gum, using tobacco, or using the toilet. Users should remove clothing/PPE immediately if pesticide gets inside. Then wash thoroughly and put on clean clothing. Users should remove PPE immediately after handling this product. Wash the outside of gloves before removing. As soon as possible, wash thoroughly and change into clean clothing.

ENVIRONMENTAL HAZARDS

To protect the environment, do not allow pesticide to enter or run off into storm drains, drainage ditches, gutters or surface waters. Applying this product in calm weather when rain is not predicted for the next 24 hours will help to ensure that wind or rain does not blow or wash pesticide off the treatment area. Rinsing application equipment over the treated area will help avoid run off to water bodies or drainage systems.

This pesticide is highly toxic to bees exposed to direct treatment on blooming crops or weeds. Do not apply this product or allow it to drift to blooming crops or weeds while bees are actively visiting the treatment area.

PHYSICAL OR CHEMICAL HAZARDS

Combustible: Do not use or store near heat or open flame.

DIRECTIONS FOR USE

It is a violation of Federal Law to use this product in a manner inconsistent with its labeling.

PRECAUTIONS AND RESTRICTIONS

- DO NOT APPLY THIS PRODUCT IN A WAY THAT WILL CONTACT ANY PERSON OR PET, EITHER DIRECTLY OR THROUGH DRIFT.
- Do not allow people or pets to enter the treated area until sprays have dried.
- DO NOT APPLY THIS PRODUCT THROUGH ANY TYPE OF IRRIGATION SYSTEM.
- Do not use indoors.
- Make applications with a backpack or compressed air sprayer.

OUTDOOR ORNAMENTALS

For use on listed insects. Do not apply to Boston, Pteris or Maidenhair Ferns, Viburnum, Lantana, Crassula, Canaerti Junipers, Petunias, or small leaf Spirea since injury may result.

Pest Controlled	Rate/ 1 Gallon water	Minimum Retreatment Interval	Rentry Interval	Maximum Applications per year	Comments
Aphids, Spider Mites	1.5 teaspoons	10 days	12 hours	6	
Bagworms, Birch Leaf Miner, Boxwood Leaf Miner	2 teaspoons	10 days	12 hours	4	
European Pine Shoot	1.5 teaspoons	10 days	12 hours	6	
Bagworms, Birch Leaf Miner, Boxwood Leaf Miner	2 teaspoons	10 days	12 hours	4	
European Pine Shoot	1.5 teaspoons	10 days	12 hours	6	
Moth, Four-lined Leaf Bug, Japanese Beetle Adult, Potato Leafhopper, Rose Leafhopper, Tarnished Plant Bug Thrip.	1.5 teaspoons	10 days	12 hours	6	
Lace Bug	1 teaspoons	10 days	12 hours	8	
Mealybugs, Whiteflies	1 teaspoons	10 days	12 hours	6	
Oak Kermes	2 teaspoons	10 days	12 hours	3	
Tent Caterpillar	2 teaspoons	10 days	12 hours	4	
Oyster Shell Scale	1 teaspoons	10 days	12 hours	8	
Euonymus Scale, Scurfy Scale	1.5teaspoons	10 days	12 hours	6	
Azalea Scale, Magnolia Scale, Pine Leaf Scale	2.25teaspoons	10 days	12 hours	4	
Fletcher Scale, Florida Red Scale, Juniper Scale	2 teaspoons	10 days	12 hours	4	Apply when scale Crawlers have settled on foliage.
Black Scale Crawlers, Soft Brown Scale	2:25 teaspoons	10 days	12 hours	3	
Monterey Pine Scale	2.5 teaspoons	10 days	12 hours	3	
Pine Needle Scale	4 teaspoons	10 days	12 hours	2	
Wax Scale	4 teaspoons	10 days	12 hours	2	Apply in spring when crawlers are active.

VEGETABLES

Thoroughly spray plants particularly the undersides of leaves and the developing fruit. The retreatment interval is indicated by the number in () following the crop. The number represents the minimum days between applications.

The REI is the Restricted Entry Interval. The number following REI represents the minimum hours between application and safe handling of the plants.

The following rates are mixed in 1 gallon of water. Use 1 gallon of the mixed spray per 500 sq. ft.

CELERY: (7) For Aphids, Spider Mites -Use 2 tsps. per gallon. REI is 24 hours. Do not make more than 3 applications per year. Do not apply within 7 days of harvest.

CUCUMBER: (7) For Aphids, Spider Mites -Use 2 tsps. per gallon REI is 24 hours. Do not make more than 3 applications per year. Do not apply within 1 day of harvest.

SQUASH summer (7) For Aphids, Spider Mites, Cucumber Beetle, Leaf Hopper - Use 2 tsps. per gallon. Do not apply unless plants are dry. REI is 24 hours. Do not make more than 5 applications per year. Do not apply within 1 day of harvest.

SQUASH, winter: (7 days) For Aphids, Spider Mites, Cucumber Beetle, Leaf Hopper - Do not apply unless plants are dry. Use 2 tsps. per gallon. REI is 12 hours. Do not make more than 3 applications per year. Do not apply within 1 day of harvest.

CANTALOUPE: (7) For Aphids, Spider Mites, Cucumber Beetle, Leaf Hopper - Use 2 tsps. per gallon. REI is 12 hours. Do not make more than 2 applications per year. Do not apply within 1 day of harvest. Do not apply unless plants are dry.

CABBAGE: (7) For Aphids, Imported Cabbage Worm, Cabbage Looper, Leaf Hopper- Use 2 tsps. per gallon. Do not make more than 6 applications per year. REI is 48 hours. Do not apply within 7 days of harvest.

BROCCOLI: (7) For Aphids, Imported Cabbage Worm, Cabbage Looper, Leaf Hopper - Use 2 1/2 tsps. per gallon. Do not make more than 2 applications per year. REI is 48 hours. Do not apply within 7 days of harvest.

KALE: (5) For Aphids, Imported Cabbage Worm, Cabbage Looper, Leaf Hopper- Use 2 tsps. per gallon. Do not make more than 3 applications per year. REI is 12 hours. Do not apply within 7 days of harvest.

MUSTARD: (5) For Aphids, Imported Cabbage Worm, Cabbage Looper, Leaf Hopper- Use 2 tsps. per gallon. REI is 12 hours. Do not make more than 3 applications per year. Do not apply within 7 days of harvest.

TURNIPS: (greens 5, roots 7) For Aphids, Imported Cabbage Worm, Cabbage Looper, Leaf Hopper - Use 2.5 tsps. per gallon. Do not make more than 3 applications per year. REI is 12 hours. Do not apply within 7 days of harvest.

HEAD LETTUCE: (6) For Aphids, Imported Cabbage Worm, Cabbage Looper, Leaf Hopper - Use 2 tsps. per gallon. Do not make more than 3 applications per year. REI is 24 hours. Do not apply within 14 days of harvest.

EGGPLANT: (5) For Aphids, Spider Mites - Use 1 tsp. per gallon. Do not make more than 10 applications per year. REI is 12 hours. Do not apply within 3 days of harvest.

ONIONS: (7) For Thrips - Use 2 tsps. per gallon. Do not make more than 3 applications per year. REI is 12 hours. Do not apply within 3 days of harvest.

PEPPERS: (5) For Aphids - 1 tsp. per gallon. Do not make more than 4 applications per year. REI is 12 hours. Do not apply within 3 days of harvest.

POTATOES: (7) For Aphids, Leaf Hoppers, Mealybugs -Use 1 tsp. per gallon. Do not make more than 4 applications per year. REI is 12 hours. No waiting time till harvest.

RADISHES: (7) For Aphids - Use 2 tsps. per gallon. Do not make more than 3 applications per year. REI is 12 hours. Do not apply within 7 days of harvest.

TOMATOES: (5) For Aphids, Spider Mites -Use 2 tsps. per gallon. 1 day to harvest. Do not make more than 5 applications per year. REI is 12 hours. Do not apply within 7 days of harvest.

FRUIT

The retreatment interval is indicated by the number in () following the crop. The number represents the minimum days between applications. The REI is the Restricted Entry Interval. The number following REI represents the minimum hours between application and safe handling of the plants. The following rates are mixed in 1 gallon of water. Use 1 gallon of the mixed spray per 500 sq. ft.

GRAPES: (14) For Leaf Hoppers, Spider Mites, Mealybugs - Use 2 tsps. per gallon. Do not make more than 3 applications per year. REI is 3 days for girdling and tying; 24 hrs for all other activities. Do not apply later than 3 days before harvesting. May cause injury to foliage. Check with local Agricultural Authorities.

CHERRIES: (14) For Black Cherry Aphids and Fruit Tree Leaf Rollers - Use 2 tsps. per gallon. Do not make more than 6 applications per year. REI is 12 hours. Thoroughly spray trees. Do not apply later than 3 days before harvest. May injure foliage.

PEARS: (7) To control Codling Moth, Fruit Tree Leaf Roller, Pear Psylla, Plum Curculio, and Red-Banded Leaf Roller - Use 2 tsps. per gallon. Do not make more than 2 applications per year. REI is 12 hours. Do not apply later than 1 day before harvest. May injure Bosc pears in the Northeast.

PEACHES: (11) For Spider Mites, Oriental Fruit Moth, and Plum Curculio - Use 2 tsps. per gallon. Do not make more than 7 applications per year. REI is 24 hours. Spray when damage is first seen or is anticipated. Do not apply later than 7 days before harvest.

STRAWBERRIES: (7) For the control of Spider Mites, and Aphids - Use 1 tsp. per gallon. Do not make more than 4 applications per year. REI is 12 hours. Treat when insects first appear. Do not apply later than 3 days before harvest. **NOTE:** Do not apply when fruit is in bloom and bees are present.

PECANS: (7) To control Spider Mites, Aphids, Pecan Nut Casebearer and Pecan Phylloxera - Use 2 tsps. per gallon and apply with a pressure sprayer. Do not make more than 4 applications per year. REI is 24 hours. Treat when insects are first seen or their damage is anticipated. Do not apply within 7 days of harvest.

OUTDOOR CITRUS

For control of Black Scale, California Scale, Citricola Scale, Soft Scale and Yellow Scale, Florida Red & Purple Scale, the Mediterranean Fruit Fly, Thrips and Aphids. (This spray will also suppress Spider Mites that may be present.) Apply sprays to give thorough coverage of fruit and the upper and lower sides of leaves and twigs when insects are present or their damage is eminent. Restriction: Do not apply when trees are in bloom or within 7 days of harvest.

The following rates are mixed in 1 gallon of water. Use 1 gallon of the mixed spray per 500 sq. ft.

Product	Ounces/500 sq. ft.	Max. applications per year	Retreatment Interval	Hours REI
Grapefruit/ not Calif.	2 tsps./gallon	4	30 days	12
Kumquats	2 tsps./gallon	4	30 days	48
Lemons/ FL. only	2 tsps./gallon	1	None	12
Limes / not Calif.	2 tsps./gallon	4	30 days	12
Oranges / not Calif.	2 tsps./gallon	4	30 days	12
Tangerines / not Calif.	2 tsps./gallon	4	30 days	12
Tangelos / not Calif.	2 tsps./gallon	4	30 days	12

ADULT MOSQUITO CONTROL

For control of adult mosquitoes. Use on lower outside foundations of homes or as a spot treatment for yards and lawns. Apply spray mixture as a fine mist or fog to lower outside foundations of home or shrubs. Dilute Malathion 50% E.C. at the rate of 4 1/2 oz. per gallon of water. Repeat application as necessary. Restriction: Do not apply to any building that houses animals. Avoid spray contact with auto finishes as product may produce spotting.

STORAGE AND DISPOSAL

Do not contaminate water, food, or feed by storage and disposal.

PESTICIDE STORAGE: Malathion 50% EC should be stored in the original unopened container in a secure dry place. Do not contaminate with other pesticide or fertilizers. The product should never be heated above 55°C (131°F), and should not be stored for long periods of time at a temperature in excess of 25°C (77°F).

PESTICIDE DISPOSAL AND CONTAINER HANDLING: Nonrefillable container. Do not reuse or refill this container.

If empty: Place in trash or offer for recycling if available.

If partly filled: Call your local solid waste agency or 1-800-CLEANUP for disposal instructions. Never place unused product down any indoor or outdoor drain.

CONDITIONS OF SALE AND WARRANTY

Our recommendations for use of this product are based upon tests believed to be reliable. Follow directions carefully. Timing and method of application, weather and crop conditions, mixtures with other chemicals and other influencing factors in the use of this product are beyond the control of the seller. To the extent consistent with applicable law, Buyer assumes all risks of use, storage, and handling not in strict accordance with the directions and precautions given herewith.

If any part of this label is missing or for assistance you may contact us via our website at www.southernag.com