

PM-19

Reg # 829-280

126



DURSBAN* 4-E INSECTICIDE

RECD EPA/OPP/DPD1

'96 MAY 29 P1:54

To be applied only by or under the supervision of Pest Control Operators, Public Health Organizations, and Other Trained Personnel Responsible for Insect Control Programs.

OUTDOOR PEST CONTROL: Chinch Bugs, Sod Webworms (Lawn Moth), Bagworms, Cutworms, Grasshoppers, White Grubs, Ticks and Chiggers.

INDOOR PEST CONTROL: Crickets, Ants, Cockroaches, Silverfish, Spiders, Clover Mites.

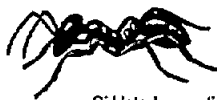
Active Ingredients:

Chlorpyrifos: [O,O-diethyl O-(3,5,6-trichloro-2-pyridyl) phosphorothioate] 44.90%
Inert Ingredients* 55.10%

Contains 4 pounds of Chlorpyrifos per gallon

* Contains Xylene & Xylene range aromatic solvent

*Dursban and the Dursban logo are registered Trademarks of DowElanco



**Keep Out Of Reach Of Children
WARNING - AVISO**



Si Usted no entiende la etiqueta, busque a alguien para que se la explique a Usted en detalle.

(If you do not understand this label, find someone to explain it to you in detail.)

SEE INSIDE OF LABEL FOR ADDITIONAL PRECAUTIONARY STATEMENTS,
STATEMENT OF PRACTICAL TREATMENT, AND USE DIRECTIONS.

Southern Agricultural Insecticides, Inc.

Palmetto, FL 34220

Hendersonville, NC 28793

Boone, NC 28607

E.P.A. Reg. No. 829-280

J1

E.P.A. Est. No. 829-FL-1

Net Contents Liquid: 2.5 Gallon (9.746 liters)

ACCEPTED

JUN 24 1996

Under the Federal Insecticide,
Fungicide, and Rodenticide Act,
as amended, for the pesticide
registered under
EPA Reg. No. 829-280

Precautionary Statements

Hazards to Humans and Domestic Animals

WARNING: May be fatal if swallowed or absorbed through skin. Causes skin irritation and eye irritation. Do not get in eyes, on skin, or on clothing. Harmful if inhaled. Avoid breathing vapors or spray mist. Do not spray vegetable gardens or other plants used for food purposes.

STATEMENT OF PRACTICAL TREATMENT

Organophosphate

IF SWALLOWED: Do not induce vomiting. Call a physician immediately.

IF ON SKIN: In case of contact, remove contaminated clothing and immediately wash skin with soap and water.

IF IN EYES: Flush eyes with plenty of water. Call a physician.

IF INHALED: Remove victim to fresh air. Apply respiration if indicated.

NOTE TO PHYSICIAN: Chlorpyrifos is a cholinesterase inhibitor. Treat symptomatically. Atropine only by injection is an antidote.

PERSONAL PROTECTIVE EQUIPMENT

Some materials that are chemical-resistant to this product are listed below. If you want more options, follow the instructions for category G on an EPA chemical resistance category selection chart.

WPS USES: Applicators and other handlers who handle this pesticide for any use covered by the Worker Protection Standard (40 CFR Part 170) - in general, only agricultural-plant uses are covered - must wear:

1. Coveralls over short-sleeved shirt and short pants.
2. Chemical-resistant gloves, such as barrier laminate or viton.
3. Chemical-resistant footwear plus socks.
4. Protective eyewear.

(CONTINUED IN NEXT COLUMN)

NON-WPS USES: Applicators and other handlers who handle this pesticide for any use NOT covered by the Worker Protection Standard (40 CFR Part 170) - in general, only agricultural-plant uses are covered - must wear:

1. Long-sleeved shirt and long pants
2. Chemical-resistant gloves, such as barrier laminate or viton.
3. Shoes plus socks.
4. Protective eyewear.

Discard clothing and other absorbent materials that have been drenched or heavily contaminated with this product's concentrate. Do not reuse them. Follow manufacturer's instructions for cleaning and maintaining PPE. If no such instructions for washables, use detergent and hot water. Keep and wash PPE separately from other laundry.

USER SAFETY RECOMMENDATIONS

User should: 1. Wash hands before eating, drinking, chewing gum, using tobacco, or using the toilet.
2. Remove clothing immediately if pesticide gets inside. Then wash thoroughly and put on clean clothing.

ENVIRONMENTAL HAZARDS

This product is toxic to birds, fish, and aquatic invertebrates. Birds feeding in treated areas may be killed. Clean up spilled product to reduce exposure to wildlife. For terrestrial uses, do not apply directly to water, or to areas where surface water is present or to intertidal areas below the mean high water mark. Runoff may be hazardous to aquatic organisms in neighboring area. Do not contaminate water when disposing of equipment washwaters.

PHYSICAL OR CHEMICAL HAZARDS

Keep container closed. **KEEP AWAY FROM OPEN FLAME.** Handle concentrate in a ventilated area.

STORAGE AND DISPOSAL

Do not contaminate water, food or feed by storage or disposal.

Storage: Store in original container in secured dry storage area. Prevent cross contamination with other pesticides and fertilizers. Do not store above 100° F for extended periods of time. If container is damaged or spill occurs, use product immediately or dispose of product and damaged container as indicated below.

Pesticide Disposal: Pesticide wastes are toxic. Improper disposal of excess pesticide, spray mixture, or rinsate is a violation of Federal Law. If these wastes cannot be disposed of by use according to label instructions, contact your State Pesticide or Environmental Control Agency, or the Hazardous Waste representative at the nearest EPA Regional Office for guidance.

Container Disposal: PLASTIC Triple rinse (or equivalent). Then puncture and dispose of in a sanitary landfill, or incineration, or if allowed by state and local authorities, by burning. If burned, stay out of smoke.

DIRECTIONS FOR USE

It is a violation of Federal law to use this product in a manner inconsistent with its labeling.

Do not apply this product in a way that will contact workers or other persons, either directly or through drift. Only protected handlers may be in the area during application.

For any requirements specific to your State or Tribe, consult the agency responsible for pesticide regulation.

AGRICULTURAL USE REQUIREMENTS

Use this product only in accordance with its labeling and with the Worker Protection Standard, 40 CFR Part 170. This standard contains requirements for the protection of agricultural workers on farms, forests, nurseries, and greenhouses, and handlers of agricultural pesticides. It contains requirements for training, decontamination, notification, and emergency assistance. It also contains specific instructions and exceptions pertaining to the statements on this label about personal protective equipment and restricted-entry intervals. The requirements in this box only apply to uses of this product that are covered by the Worker Protection Standard.

Do not enter or allow worker entry into treated areas during the restricted-entry interval (REI) of 12 hours.

PPE required for early entry to treated areas that is permitted under the Worker Protection Standard and that involves contact with anything that has been treated such as plants, soil, or water, is:

1. Coveralls over short-sleeved shirt and short pants
2. Chemical-resistant gloves, such as barrier laminate or viton
3. Chemical-resistant footwear plus socks
4. Protective eyewear.

NON-AGRICULTURAL USE REQUIREMENTS

The requirements in this box apply to uses of this product that are NOT within the scope of the Worker Protection Standard for agricultural pesticides (40 CFR Part 170). The WPS applies when this product is used to produce agricultural plants on farms, forests, nurseries, or greenhouses.

Keep children, pets and other unprotected persons out of the treated area until sprays have dried.

496

USE DIRECTIONS - PESTS OUTDOORS

PEST OF LAWNS, other Ornamental and Recreational Turf Grass Areas and Perennial Turf Grasses Grown Only for Seed:

Use DURSBAN 4-E to control the pests listed in the following table by application at the recommended dosages and in accordance with the directions given below. Dilute DURSBAN 4-E in enough water to obtain complete and uniform coverage of pest infested areas and apply as a coarse, low-pressure spray using suitable application equipment. Thoroughly water immediately after treatment to wash the insecticide into the turf, except as noted. For best results, the lawn should be moist at time of treatment.

Ants, Armyworms, Brown dog tick, Chiggers, Chinch bugs, Clover mite, Crickets, Cutworms, Earwigs, Fleas, Grasshoppers, Sod Webworms. Use 3/4 fl. oz. per 1,000 sq. ft. Spray when pests first appear; re-treat when needed. For sod webworms delay watering or mowing the treated area for 12 to 24 hours after treatment. Use 3-6 gals. water per 1,000 sq. ft. White grubs (European chafer and Japanese beetle larvae only). Use 1 1/2 to 3 fl. oz. per 1,000 sq. ft. usually during late July and August or as recommended by your local Agricultural Extension Service specialist for your area. Immediately after spraying, irrigate the treated area with 1/2 to 1 inch of water to wash the insecticide in the underlying soil. 3/4 fl. oz. per 1,000 sq. ft. = 3 3/4 fl. oz. per 5,000 sq. ft. = 1/2 pint per 10,700 sq. ft. = 1 quart per acre.

Area Control of Ticks and Chiggers: Use DURSBAN 4-E to control ticks and chiggers infesting non-cropland areas such as roadsides, footpaths and trails, picnic and camping sites, parks and other recreational areas where these pests are present and create a nuisance or possible public health problem. Apply DURSBAN 4-E in water at the rate of 1/2 pint per acre (equivalent to 1/2 fl. oz. per 2,700 sq. ft.) using hydraulic sprayer, mist applicator, knapsack sprayer, or other suitable hand or power spray equipment. Treat low underbrush, grassy areas, weeds and ground surface and debris using enough spray volume to obtain thorough coverage usually 40 to 100 gallons per acre.

ATTENTION (Area Control of Ticks and Chiggers): Do not allow public use of treated areas during application or until spray has dried.

NOTE: Mosquitoes coming to rest on areas treated for control of turf and ornamental plant pests will be killed for varying periods of time after treatment depending on exposure of treated areas to weathering conditions.

TO HELP PREVENT INFESTATIONS OF BUILDING -- For Ants, Crickets, Earwigs, and Sowbugs (pillbugs), treat a band of soil 6 to 10 feet wide around and adjacent to the building, also the building foundation to a height of 2 to 3 feet, where pests are active and may find entrance. Use the same dosage and dilution recommended for control of these pests on turf as shown under PESTS OF LAWNS. Apply as a coarse spray to thoroughly and uniformly wet the band area.

596

ORNAMENTAL PLANTS:

Use DURSBAN 4-E Insecticide to control aphids, bagworms, cutworms, grasshoppers, leafhoppers, mealybugs, mites, spittlebugs, thrips (exposed), and whiteflies on flowers, shrubs, vines, shade and flowering trees and evergreens found to be infested with these pests. Dilute DURSBAN 4-E Insecticide with water according to following directions and apply using a suitable hand or power spray equipment in a manner to provide complete and uniform coverage of infested plants. Avoid overspraying to the point of excessive runoff. Treat when pests appear and repeat at 7 to 10 day intervals, if needed. NOTE: Do not use on azaleas, camellias, poinsettias, rose bushes or variegated ivy because of possible injury to these plants.

PESTS CONTROLLED: Aphids, Bagworms, Eastern Tent caterpillar, Fall webworm, Grasshoppers, Mites, Orangestriped oakworm, Spittlebugs, White flies, Yellow necked caterpillar.

Per 3 gallons use 0.25% fl. oz.; per 10 gallons use 0.8 fl. oz.; per 100 gallons use 1/2 pint.

PESTS CONTROLLED: Cutworms, Leafhoppers, Mealybugs, Mimosa webworm, Redhumped caterpillar, Thrips (exposed).

Per 3 gallons use 0.5 fl. oz.; per 10 gallons use 1.6 fl. oz.; per 100 gallons use 1 pint.

PESTS CONTROLLED: Ash borer, Lilac borer, Scale crawlers, (Oak lecanium, Pine needle, Tea, White peach).

Per 3 gallons use 1.0 fl. oz.; per 10 gallons use 3.2 fl. oz.; per 100 gallons use 1 quart.

USE DIRECTIONS - PESTS INDOORS

GENERAL INFORMATION: Use to control the pests indicated in the areas listed below by application as a 0.25% or 0.5% Chlorpyrifos (Dursban 4-E) spray. Use the 0.25% spray to control light infestations and the 0.5% spray to quickly reduce heavy infestations or as directed. To prepare the spray, dilute with water or with a suitable base oil* as shown in the following SPRAY DILUTION CHART. Repeat the treatment as needed.

*Use only deodorized kerosene for oil-based sprays to be applied in food handling establishments.

SPRAY DILUTION CHART					
Gallons of Spray Mixture Desired	Fluid Ounces of Dursban 4-E to Use		Gallons of Spray Mixture Desired	Fluid Ounces of Dursban 4-E to Use	
	0.25%	0.5%		Oil-base spray No.*	0.25%
Water based spray:					
1	2/3	1 1/3	1	1/2	1
3	2	4	3	1 1/2	3
5	3 1/3	6 2/3	5	2 1/2	5
10	6 2/3	13 1/3	10	5	10 1/2

Note: 1 fluid ounce = 2 tablespoons = 6 teaspoonfuls

* No. calculated on basis of deodorized kerosene.

Note: Where quick knockdown and or "flushing action" is desired, dichlorvos (DDVP) or pyrethrins may be added to the spray mixture. For best results, use dichlorvos at a concentration of 0.25% in both water and oil-base sprays. Consult labeling for the dichlorvos or pyrethrins product used to determine the amount needed to give the desired spray concentration. Also read and observe all use and handling precautions for these products. Do not use in combination with dichlorvos (DDVP) or pyrethrins for treatment of food areas of food handling establishments.

696

--- CRACK AND CREVICE TREATMENT ---

FOOD HANDLING ESTABLISHMENTS -- Places other than private residences in which exposed food is held, processed or served. (including but not limited to Restaurants, Grocery Stores, Bakeries, Bottling Plants, Canneries and Grain Mills).

FOOD AREAS -- APPLICATION LIMITED TO CRACK AND CREVICE TREATMENT ONLY. Includes areas for receiving storage, packing (canning, bottling, wrapping, boxing) preparing edible waste storage and enclosed processing systems (meats, dairies, edible oils, syrups). Serving areas (when food is exposed and facility is in operation also would be considered a food area). APPLICATIONS OF THIS PRODUCT IN THE FOOD AREAS OF FOOD HANDLING ESTABLISHMENTS OTHER THAN AS A CRACK AND CREVICE TREATMENT ARE NOT PERMITTED.

Refer to above chart for dilution rates. Apply in small amounts directly into cracks and crevices using sprayer capable of delivering a pin stream of insecticide in points between different elements of construction, between equipment and floors, openings leading to voids and hollow spaces in walls; equipment legs and bases; conduits, motor housing junctions or switch boxes. Do not use water dilution sprays in conduits, motor housings, and electrical switch boxes. Prior to oil dilution application de-energize electrical equipment. After applications allow time for oil to evaporate before starting motors or placing switches in the on position where the following insects may hide -- COCKROACHES, ANTS, CRICKETS, FIREBRATS, SILVERFISH, SPIDERS. Care should be taken to avoid depositing onto exposed surfaces or introducing the material into the air. Avoid contamination of food or food processing surfaces. For ants apply to ant trails and where they may find entrance. Repeat treatment as needed but not more than once every 7 days in restaurants and similar food service establishments or more often than once every 14 days in other types of food handling establishments. DURSBAN 4-E may be applied after 2 days from last treatment but emergency use should be limited to once per month.

APPLICATION WITHIN RESIDENTIAL BUILDINGS:

Including Homes and Apartment Buildings and Within Nonfood Areas of Industrial, Institution, and Commercial Buildings Including Hospitals, Stores, Manufacturing Plants, and Warehouses: For Spot Treatment Only -- Apply as a coarse spray or with a paint brush to localized areas where cockroaches (including strains resistant to certain other insecticides) ants, clover mites, crickets, firebrats, silverfish, and spiders are found or normally occur including dark corners of rooms and closets; cracks and crevices in walls; along and behind baseboards, beneath sinks, stoves, refrigerators, and cabinets; around plumbing and other utility installations. For ants apply to ant trails, also around doors and windows and wherever else these pests may find entrance. For clover mites use a 0.5% spray only.

NOTE: A period of 4 to 7 days is normally required for maximum effect on cockroaches. For control of carpet beetles, thoroughly apply a 0.5% spray as a spot treatment along baseboards and edges of carpeting, under carpeting, rugs and furniture, in closets and on shelving, and wherever else these insects are seen or suspected. For control of brown dog ticks, thoroughly apply a 0.5% spray as a spot treatment of infested areas such as pet beds and resting quarters; nearby cracks and crevices; along and behind baseboards, window and door frames and localized areas of floor and floor covering where these pests may be present. Old bedding of pets should be removed and replaced with clean, fresh bedding after treatment of pet areas. **DO NOT TREAT PETS WITH THIS PRODUCT.** Treat pets additionally with a product registered for animal application.

Attention (Pests Indoors): Do not apply water-based sprays of this product in conduits, motor housings, junction and switch boxes or other electrical equipment because of possible shock hazard if there is need to treat such areas use only oil-based sprays. Prior to application de-energize electrical equipment. After application allow time for oil to evaporate before starting motors or placing switches in the "on" position. Do not use in poultry houses or other animal buildings. Do not allow spray to contact food, feedstuffs, and water supplies. Thoroughly wash dishes and food handling utensils with soap and water if they become contaminated by application of this product. Do not allow children or pets to contact treated surfaces until spray has dried. Remove pets and cover fish bowls (tanks) before spraying.

NOTICE: Seller warrants that the product conforms to its chemical description and is reasonably fit for the purposes stated on the label when used in accordance with directions under normal conditions of use, but neither this warranty nor any other warranty of MERCHANTABILITY OR FITNESS FOR A PARTICULAR PURPOSE, express or implied, extends to the use of this product contrary to label instructions, or under abnormal conditions, or under conditions not reasonably foreseeable to seller, and buyer assumes the risk of any such use.