



000829-00257-051899

Printed: 07:14:10 Friday, 18 Jun, 1999 # 14 / 3292

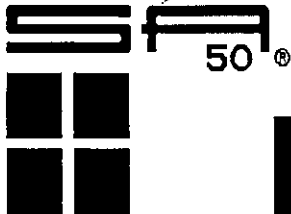
Systems Integration Group, Inc.

PM04

829-257

5/18/99

1063



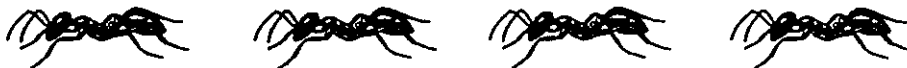
Home & Garden

Oftanol®

insecticide

1.5% GRANULAR

CONTROLS MOLE CRICKETS, GRUBS, AND FIRE ANTS



ACTIVE INGREDIENT:

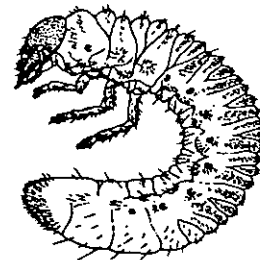
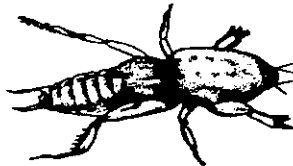
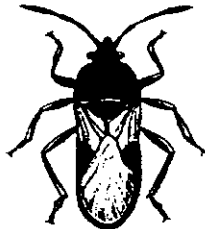
1-Methylethyl 2-[ethoxy (1-methylethyl) amino] phosphinothioyl] oxy] benzoate 1.5%

INERT INGREDIENTS 98.5%

TOTAL 100.0%

U.S. PATENT NO. 3,621,082

OFTANOL is a Registered Trademark of Bayer Corporation.



CAUTION

KEEP OUT OF REACH OF CHILDREN

PRECAUTIONARY STATEMENTS

HAZARDS TO HUMANS AND DOMESTIC ANIMALS

CAUTION: Harmful if swallowed. Avoid contact With skin, eyes, or clothing. Avoid breathing dust. Wash thoroughly with soap and warm water after handling. Wash contaminated clothing with soap and hot water before reuse. Keep out of reach of children.

STATEMENTS OF PRACTICAL TREATMENT

If Swallowed: Call a physician or Poison Control Center. Give a glass or two of water and induce vomiting by touching finger to back of throat. Do not induce vomiting or give anything by mouth to an unconscious or convulsing person.
If In Eyes: flush with plenty of water. **If on Skin:** wash with soap and hot water. **If Inhaled:** remove to fresh air. If not breathing, give artificial respiration, preferably mouth to mouth. Get medical attention.

ENVIRONMENTAL HAZARDS

This pesticide is toxic to fish and wildlife. For terrestrial uses, do not apply directly to water or to areas where surface water is present or to intertidal areas below the mean high water mark. Do not Contaminate water by cleaning of equipment or disposal of wastes.

STORAGE AND DISPOSAL

DO NOT CONTAMINATE WATER, FOOD OR FEED BY STORAGE OR DISPOSAL. Store pesticide in a cool, dry place and in such a manner as to prevent cross contamination with other pesticides, fertilizers, food and feed. Store in original container and out of the reach of children. **PESTICIDE DISPOSAL:** Securely wrap original container in several layers of newspaper and discard in trash. **CONTAINER DISPOSAL:** Do not reuse bag. Discard bag in trash.

EPA EST. NO. 829-FL-1 (3); 829-NC-1 (4); 829-NC-2 (5); Number following Est. No. corresponds to first digit in Lot No.

Southern Agricultural Insecticides, Inc.

Palmetto, Fla. 34220

Hendersonville, N.C. 28793

Boone, N.C. 28607

E.P.A. REG. No. 829-257

J3

Net Weight: 3 lbs.(1.36 kg)

or Net Weight: 15 lbs.(6.80 kg) or Net Weight: 40 lbs.(18.14 kg)

ACCEPTED
MAY 18 1999
Under the Federal Insecticide, Fungicide, and Rodenticide Act, as amended, for the pesticide registered under EPA Reg. No. 829-257

REC'D
7/10/99
REC'D
7/10/99

DIRECTIONS FOR USE

It is a violation of Federal law to use this product in a manner inconsistent with its labeling.

IMPORTANT: Read these entire Directions for Use and Conditions of Sale before using OFTANOL 1.5% Granular insecticide.

OFTANOL 1.5% Granular Insecticide is recommended for use on lawns, other ornamental and recreational turf grass areas, and Landscape beds.

APPLICATION EQUIPMENT

Apply OFTANOL 1.5% Granular uniformly over the turf area with suitable granular turf application equipment. Both drop-type and rotary-type spreaders may be used to apply OFTANOL 1.5% Granular. Avoid the use of spreaders which would apply the material in narrow, concentrated bands. Calibrate application equipment prior to use according to the manufacturer's directions. Check frequently to be sure equipment is working properly and distributing granules uniformly.

APPLICATION TECHNIQUES

OFTANOL 1.5% Granular application using a pull-type drop spreader can be aided by a splash board mounted under the hopper for more uniform granule distribution. A more uniform application can be made by spreading half the required amount of OFTANOL 1.5% Granular over the area, and then immediately apply the remaining half at right angles or crosswise. The full recommended rate of OFTANOL 1.5% Granular must be used for maximum benefit.

When applying OFTANOL 1.5% Granular, use appropriate marking systems and make application when the wind is calm to prevent missed areas.

SPREADER SETTINGS

Approximate Spreader Settings for applying OFTANOL 1.5% Granular at the rate of 3 pounds per 1000 sq. ft.

MODEL	SETTING	MODEL	SETTING
Cyclone model B-1	3.5	Scotts PF-1/011B	6.0

RECOMMENDED APPLICATIONS: Be Sure To Read The NOTE Following This Section.

ORNAMENTAL AND RECREATIONAL TURF GRASSES AND NON-CROP AREAS (such as fence rows and road-sides)

- 1. WHITE GRUB AND BILLBUG LARVAE CONTROL:** Apply 3 lb./1,000 sq. ft. Water treated area thoroughly immediately after application, using sufficient water to wet soil 1-1.5 inches deep. White Grub Larvae include the larvae of Japanese beetles, Black turf grass ataeenius, Chaferes, Phyllophaga spp, Green June beetle, Oriental beetle, and Asiatic garden beetle.
- 2. HYPERODES WEEVIL CONTROL (Larval Stage):** Apply 3 lb./1,000 sq. ft. between full bloom periods of forsythia and flowering dogwood, usually April 15th to May 15th, and water-in as for White Grub Larvae control.
- 3. MOLE CRICKET CONTROL:** Apply 3 lb./1,000 sq. ft. and water immediately after application with 0.5-1 inch of water.
- 4. SOD WEBWORM LARVAE AND CHINCH BUG CONTROL:** Apply 1.5 to 3 lb./1,000 sq. ft. then apply 0.5-1 inch of water immediately after treatment. Reapply as necessary for pest infestations.
- 5. FIRE ANT CONTROL: Area Fire Ant Control:** Apply 3 lbs./1,000 sq. ft. uniformly over area to be treated for residual control. Water immediately after application using 1/2 to 1 inch of water. If established fire ant mounds are present use the mound drench treatment prior to area application. If a mound drench treatment is made, only one area treatment may be made.

Established Fire Ant Mounds-Drench Treatments: Wet Conditions: Distribute 0.5 oz. per 9 sq. ft. and immediately sprinkle gently with 3 gallons of water. **Dry Conditions:** Treat as noted for wet conditions, however, to insure penetration apply an additional 3 gallons of water to the treated mound area after treatment. Make only one mound drench treatment.

NOTE: Do not apply more than 6 lbs. OFTANOL 1.5% Granular per 1,000 sq. ft. per year or an equivalent amount of 1.45 ounces active ingredient per 1,000 sq. ft. regardless of formulation used. Minimum interval between applications is 15 days for 1.5 lb. rate and 30 days for the 3 lb. rate. Consult your local turf, state Agricultural Experiment Station, or state Extension Service Specialists for more specific information regarding timing of application.

ORNAMENTAL LANDSCAPE BEDS: White Grub Larvae(as listed above), Mole Crickets, and Fire Ants. See recommendations for turf grasses and non-crop areas for the appropriate rates. **Note:** (ornamental landscape beds) Uniformly apply the granules in a manner so that the tree trunks and foliage will not disturb the pattern. Immediately irrigate after application and prior to any cultivation or soil disturbance so that the OFTANOL 1.5% Granular will be uniformly distributed into the upper soil profile. Apply irrigation in a manner so that no run-off or erosion will occur which could move OFTANOL from the treated area.

RESTRICTIONS: Do not mow treated turf before irrigation has been applied as per RECOMMENDED APPLICATIONS. Do not graze treated areas or use clipping from treated area for feed or forage. Keep children and pets off treated area until dry.

CONDITIONS OF SALE: The directions on this label were determined through research to be the directions for correct use of this product. This product has been tested for a range of weather conditions similar to those weather conditions that are ordinarily and customary in the geographic area where the product is used insufficient control of pests may result from the occurrence of extraordinary or unusual weather or from reactions. In addition failure to follow label directions may cause injury to the crop to which the product is applied. Other crops animals, man or the environment. Southern Agricultural Insecticides, Inc. and the seller offer and the buyer accepts and uses this product subject to the conditions that extraordinary or unusual weather or failure to follow label directions are beyond the control of Southern Agricultural Insecticides, Inc. and are therefore the responsibility of the buyer.



Claims which may be made on the product container or in accompanying literature:

1. For insect control on Turf Grasses, Ornamental Landscape Beds, and certain non-crop areas.
2. Provides residual control of Grubs and other insects.
3. CONTROLS MOLE CRICKETS, GRUBS, AND FIRE ANTS

Graphics or Line Art which may be on the label or on accompanying literature:

