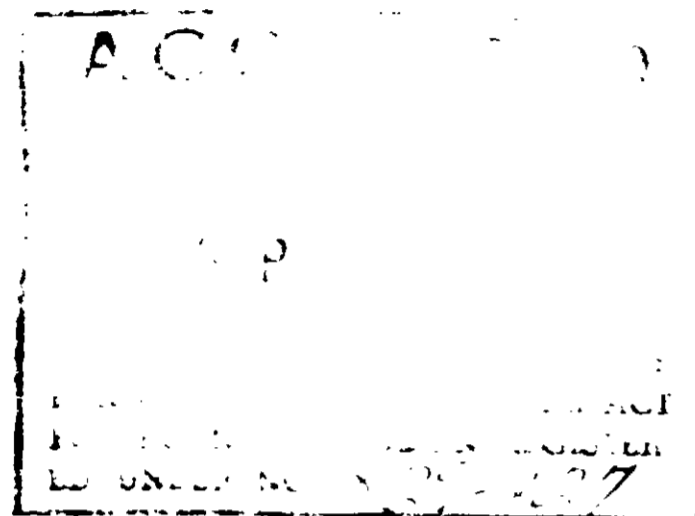




Home and Garden

# VEGETABLE DUST

CONTROLS MANY VEGETABLE INSECTS AND DISEASES



CONTAINS DIAZINON®, SEVIN® AND ZINEB

### ACTIVE INGREDIENTS:

0,0-diethyl 0-(2-isopropyl-6-methyl-4-pyrimidinyl phosphorothioate)	1.5%
Carbaryl (1-naphthyl methylcarbamate)	3.0%
Zineb (zinc ethylene bisdithiocarbamate)	6.0%
Zinc as metallic	1.11%

### INERT INGREDIENTS:

89.5%  
100%

Diazinon® trademark of CIBA-GEIGY Corp.  
Sevin® trademark of Union Carbide Corp. U.S. Pat. Nos. 2,903,478 & 3,009,855

## CAUTION: KEEP OUT OF REACH OF CHILDREN

Harmful if swallowed or inhaled. May be absorbed through skin. Do not breathe dust. Avoid contact with skin, eyes and clothing. May irritate eyes, throat and skin. Wash thoroughly after handling. In case of prolonged or frequent use, wear clean regular long-sleeved work clothing. Do not contaminate food or feed.

NOTE TO PHYSICIAN: Carbaryl is a moderate reversible cholinesterase inhibitor. Atropine is antidotal. Do not use 2 PAM, opiates or cholinesterase inhibiting drugs.

## Southern Agricultural Insecticides, Inc.

PALMETTO, FLA      HENDERSONVILLE, N.C.      BOONE, N.C.

EPA Reg. No. 829-022

Net Weight

### DIRECTIONS FOR USE

SA-50 Brand Vegetable Dust is formulated for use as a general purpose vegetable dust to control insects and diseases listed for the crops given below. Certain insects or diseases may not be controlled or may be difficult to control and an alternative pesticide for specific pests should be used.

Apply this dust in a manner that will uniformly coat both upper and lower surfaces of foliage. Applications should be started as soon as insects are observed or at the first signs of disease. Repeat at 7 to 10 day intervals as long as needed. During periods of severe disease or insect infestation, more frequently. Interval in days, between last application of this product and harvest is shown in ( ) parenthesis after each crop.

**BEANS** (7), **PEAS** (10)—Black Bean Aphid, Mexican Bean Beetle, Leaf Miners, Cucumber Beetles, Bean Leaf Beetle, Flea Beetles, Japanese Beetle, Leafhoppers, Velvet Bean Caterpillar, Downy Mildew, Rust and Anthracnose.

**BEETS** (14)—Dipterous Leaf Miners, Flea Beetles, Harlequin Bug, Leaf Hoppers, Armyworms, Cabbage Worms and Loopers, Corn Earworm, Tarnished Plant Bug, Stink Bugs, Downy Mildew and Leaf Spot.

**BROCCOLI** (7), **BRUSSELS SPROUTS** (7), **CABBAGE** (7), **CAULIFLOWER** (7)—Aphids, Flea Beetles, Harlequin Bug, Armyworms, Cabbage Worms and Loopers, Corn Earworm, Downy Mildew and Leaf Spot.

**CARROTS** (10)—Aphids, Flea Beetles, Harlequin Bug, Leafhoppers, Armyworms, Cabbage Worms and Loopers, Corn Earworm, Tarnished Plant Bug, Stink Bugs, Early and Late Blights.

**COLLARDS** (14), **KALE** (14), **RADISH** (14), **SWISS CHARD** (14), **TURNIPS** (14)—Aphids, Flea Beetles, Harlequin Bug, Leafhoppers, Armyworms, Cabbage Worms and Loopers, Corn Earworm, Tarnished Plant Bug, Stink Bugs, Downy Mildew and Leaf Spots.

**CUCUMBER** (7), **MELONS** (5), **SQUASH** (7)—Aphids, Mites, Serpentine Leaf Miners, Pickleworm and Melonworm, Cucumber Beetle, Flea Beetles, Leafhoppers, Squash Bug, Alternaria Blight, Angular Leaf Spot, Anthracnose, Blossom Blight, Downy Mildew, Gummy Stem Blight and Scab.

**LETTUCE** (14), **ENDIVE** (14)—Aphids, Dipterous Leaf Miners, Armyworms, Cabbage Worms and Loopers, Leafhoppers and Downy Mildew.

**PEPPER** (5)—Aphids, Serpentine Leaf Miners, Flea Beetles, Colorado Potato Beetle, Leafhoppers, European Corn Borer, Fall Armyworm, Tomato Fruitworms, Tomato Hornworm, Stink Bugs, Anthracnose, Downy Mildew, Cercospora and other leaf spots, Phytophthora and other fruit rots.

**SPINACH** (14)—Aphids, Dipterous Leaf Miners, Flea Beetles, Leaf Hoppers, Armyworms, Cabbage Worms and Loopers, Stink Bugs, Downy Mildew and White Rust.

**STRAWBERRIES** (7)—Aphids, Two-Spotted Spider Mites, Strawberry Leaf Rollers, Strawberry Weevil, Meadow Spittlebug, Leaf Spot and Stem-end Fruit Rot.

**SWEET CORN** (2)—Corn Earworm, Corn Rootworm Adults, Fall Armyworm, Flea Beetles, Japanese Beetle, Sap Beetle, Leafhoppers, Helminthosporium Leaf Blight and Puccinia Rust. For insects attacking the silks and ears, apply at 2-3 day intervals starting when silks appear until silks begin to dry.

**TOMATO** (5)—Aphids, Dipterous Leaf Miners, Flea Beetles, Fall Armyworm, Colorado Potato Beetle, Tomato Fruit Worm, Tomato Horn Worm, Stink Bugs, Anthracnose, Early and Late Blights, Gray Mold, Gray Leaf Spot, Nail Head Spot and Septoria Leaf Spot.

Keep container tightly closed when not in use. Do not reuse empty container. Destroy when empty.

This product is toxic to fish, birds, and other wildlife. Birds and other wildlife in treated areas may be killed. Keep out of lakes, streams, or ponds. Do not apply where runoff is likely to occur. Do not apply when weather conditions favor drift from area treated. Do not contaminate water by cleaning of equipment, or disposal of wastes. Apply this product only as specified on this label.

This product is highly toxic to bees exposed to direct treatment or residues on crops. Protective information may be obtained from your Cooperative Agricultural Extension Service.

Do not use treated plants for forage or hay. Remove residue from edible parts by trimming and washing. Do not apply to wet foliage or during periods of high humidity or injury to tender foliage may result. Where cabbage looper is a principal problem use an alternative pesticide that is specifically recommended.

Buyer assumes all risks of use, storage or handling of this material not in strict accordance with directions and precautions given herewith.