

BUFFALO MOTH
or
Carpet Beetle

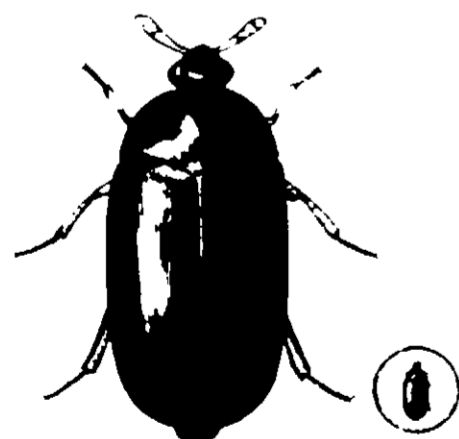


ADULT
Mottled Gray with Brown Spots



LARVA
Black hairs on lighter body
Enlarged 5 to 6 times normal size

Black Carpet Beetle

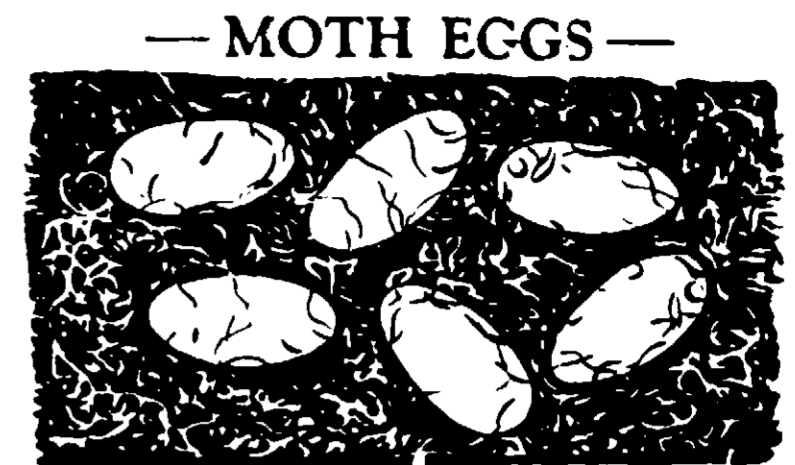


ADULT
Black



LARVA
Brown
Enlarged 6 times normal size

BUFFALO MOTH CRYSTALS

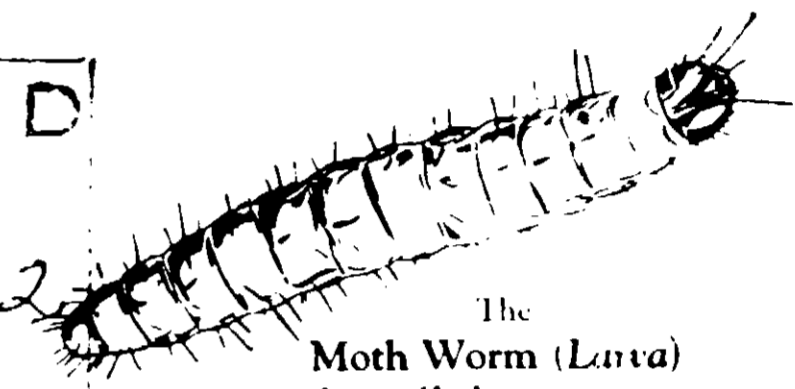


Enlarged 4-5 times normal size

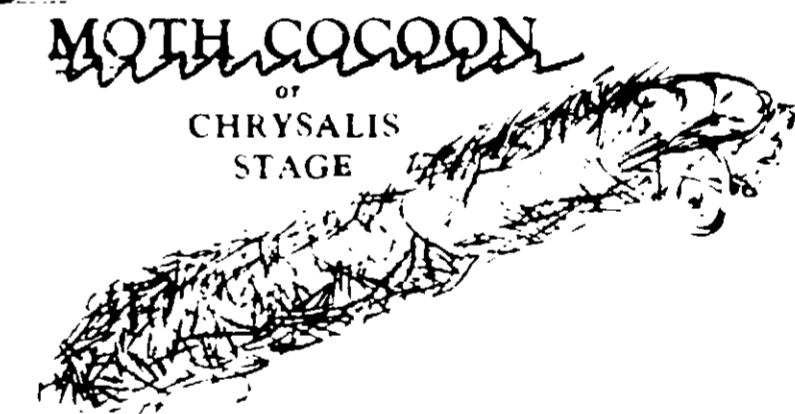
ACCEPTED

Nov 29, 1972

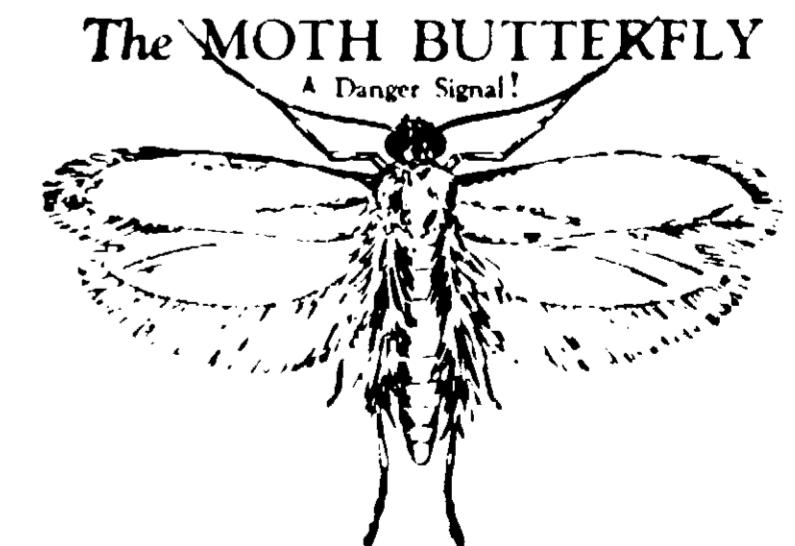
809-2



The
Moth Worm (Larva)
does all the damage -



MOTH COCOON
or
CHRYSALIS
STAGE



The MOTH BUTTERFLY
A Danger Signal!

Distributed by

**AMERICAN
DISINFECTANT COMPANY**
928 Eye St., N.W. Washington, D.C. 20001 National 8-6478

Extermination Service

Fumigation Vault

CAUTION

Keep Out of Reach of Children
See reverse panel for additional caution statements.

100% *Active Ingredients* (Paradichlorobenzene)


EPA

~~809-2~~ Registration No. 809-2

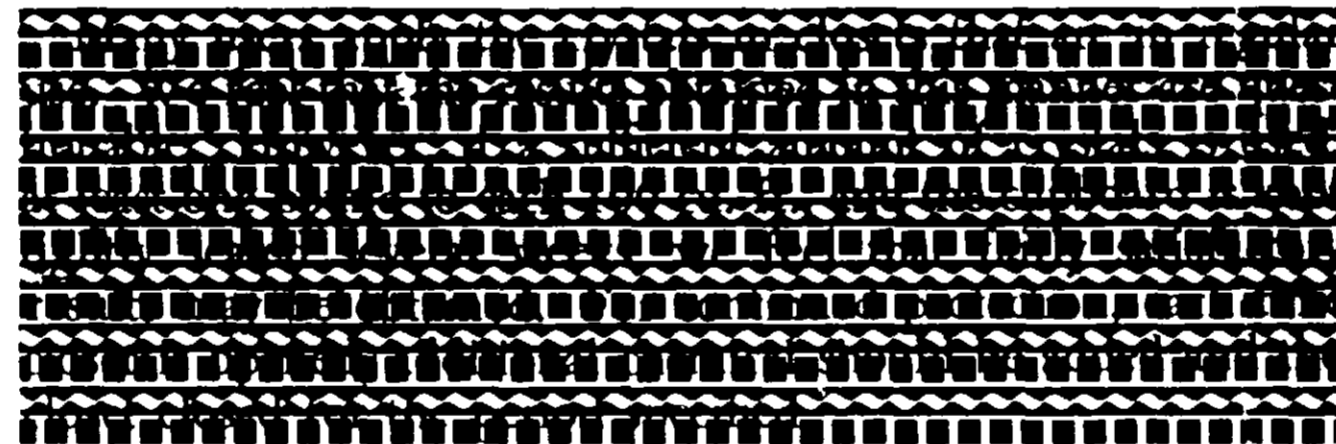
Net Weight 6 lbs.

DIRECTIONS


Our Buffalo Moth Crystals are effective in the prevention of damage to clothing, etc., by the so-called "buffalo moths" and the common clothes moths. It is essential that a sufficient amount of the crystals be used in a comparatively air-tight area.

For clothing, we recommend packing in a tight chest or trunk and applying the crystals at the rate of one pound (or one pint) to each 10 cubic feet of space; it may be well to apply the majority of the crystals among the top layers or under the top layer of the clothing. The top should then be closed and sealed so as to prevent escape of the vapors. A good grade of masking tape is adaptable to this use, as it doesn't mar the surface when carefully removed. The container should be kept closed for several weeks. If the container is tight, we believe this treatment will give  protection for a period of six months or more.

For rugs, the same procedure is desirable, though good results may be obtained by encasing the rug in gas-proof paper, and sealing all exposed crevices.



CAUTION

Avoid  breathing of Vapor. Avoid contact with eyes. Rooms that have been treated with Crystals should be well ventilated before occupancy. Harmful if swallowed. If taken internally administer an emetic and call a physician. Do not put Crystals with Naphthalene or Camphor. Do not use with styrene plastic hangers or boxes. Keep out of reach of children.