

PHAMPLET

WHEN TO USE

To assure effective control, apply when weeds are actively growing. Use only clean water. Repeat applications may be necessary to control hard to kill annual and grasses. For best results, apply on a sunny day, when the daytime temperature is at least 60°F. Apply only if the air is calm and there is no rain for 12 hours. Do not use on or around edible food or food crops.

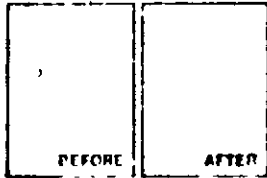
HOW TO USE: Equip nozzle to coarse spray from nozzle within 2 feet of weed or grass and direct the spray to the center of weed. Don't over spray. Control tough weeds such as Canada Thistle or Foxon. One may not be killed with 1 application. Re apply in 4 weeks for complete control. When applying spray, take care not to spray desirable grass, shrubs or plants as well as green plant tissue. Avoid drift in such green plant tissue. If spray accidentally contains desirable grass or plants, wash off with water immediately. Do not use on areas treated within 12 hours after application but apply if rain is expected within 12 hours.

NOTICE: Seller makes no warranty, expressed or implied, concerning the use of this product other than indicated on the label. Buyer assumes the risk of use and the amount of this merchandise at the time and of handling is contingent on the use of this.

THE CHAS. H. LILLY CO
Portland, Oregon 97214

EPA Reg. No. 802- EPA Env. No. 802 OR 1

LILLY/MILLER
Ready-to-use
Knock-Out
Weed & Grass Killer



**Kills weeds &
grasses systemically
roots & all**

ACTIVE INGREDIENT
Glyphosate salt
0.96%
INERT INGREDIENTS
99.04%

Keep out of reach of children

CAUTION

NET CONTENTS: 1 QI.

PRECAUTIONARY STATEMENTS
HAZARDS TO HUMANS AND DOMESTIC ANIMALS

CAUTION: Avoid contact with eyes, skin or clothing. Avoid breathing spray mist. In case of contact immediately flush eyes with plenty of fresh water for 15 minutes. For skin, wash with plenty of soap and water. Get medical attention if irritation persists. Keep children and pets off treated areas until spray has dried. Avoid contact with treated areas.

ENVIRONMENTAL HAZARDS

Do not spray directly to water. Do not contaminate water by cleaning of equipment or disposal of waste.

DIRECTIONS FOR USE

Read entire label carefully to use the product in a manner consistent with labeling.

STORAGE AND DISPOSAL

Do not store in any type of food or feed. Do not reuse empty container. Wrap container and put in trash collection.

READ ENTIRE LABEL AND ATTACHED PAMPHLET
FIRST USE ONLY AS DIRECTED, NOTING ALSO CAUTIONS

Use of this product (Knock-Out Weed and Grass Killer) controls a broad spectrum of weeds, grasses and undesirable vegetation around homes, schools and commercial areas. It is a systemic herbicide. It kills and controls weeds and grasses by being absorbed by the roots and stems of plants. It is a systemic herbicide. It kills and controls weeds and grasses by being absorbed by the roots and stems of plants. It is a systemic herbicide. It kills and controls weeds and grasses by being absorbed by the roots and stems of plants.

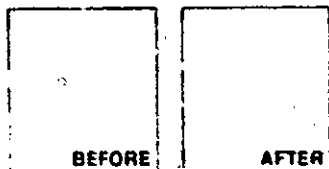
CONTROLS

Barnyard
Bentgrass
Bermudagrass
Bristle
(Witchgrass)
Buckhorn
Cane
Caryopsis
Cyperus
Dandelion
Digitaria
Echinochloa
Fescue
Giant Ragweed
Hairy Wood
Horseweed
Lamb's Quarters
Lima Bean
Linn's
Meadow
Mullein
Nutsedge
Oxalis
Panicum
Pennywort
Pigweed
Ragweed
Rice
Ryegrass
Soybean
Squaw Weed
Tarnished
Tobacco
Tumbleweed
Vernonia
Witchgrass
Yellow Top

Lamb's Quarters
Lima Bean
Linn's
Meadow
Mullein
Nutsedge
Oxalis
Panicum
Pennywort
Pigweed
Ragweed
Rice
Ryegrass
Soybean
Squaw Weed
Tarnished
Tobacco
Tumbleweed
Vernonia
Witchgrass
Yellow Top

BEST DOCUMENT AVAILABLE

LILLY/MILLER
Ready to use
Knock-Out
Weed & Grass Killer



ACTIVE INGREDIENT
Isopropylamine salt of glyphosate 49.9%
INERT INGREDIENTS 50.1%

Kills weeds & grasses systemically, roots & all.

Keep out of reach of children
CAUTION
See back of container for complete directions

NET CONTENTS 24 OZ.

ACCEPTED

NOV - 2 1983

Under the Federal Insecticide, Fungicide, and Rodenticide Act, as amended for the pesticide registered under EPA Reg. No. 802-535

**PRECAUTIONARY STATEMENTS
HAZARDS TO HUMANS AND DOMESTIC ANIMALS**

CAUTION: Avoid contact with eyes, skin or clothing. Avoid breathing spray mist. In case of contact, immediately flush eyes with plenty of fresh water for 15 minutes. For skin, wash with plenty of soap and water. Get medical attention if irritation persists. Keep children and pets off treated areas until spray has dried. Avoid contamination of food or feed.

ENVIRONMENTAL HAZARDS

Do not apply directly to water. Do not contaminate water by cleaning of equipment or disposal of waste.

DIRECTIONS FOR USE

It is a violation of Federal law to use this product in a manner inconsistent with its labeling.

STORAGE AND DISPOSAL

Keep from freezing. Store this product in its original container and keep in a locked storage area out of reach of children and domestic animals. Do not reuse container. Rinse thoroughly before discarding and securely wrap original container in several layers of newspaper and discard in trash.

READ ENTIRE LABEL AND ATTACHED PAMPHLET FIRST. USE ONLY AS DIRECTED, NOTING ALL CAUTIONS.

Lilly Miller **KNOCKOUT** Weed and Grass Killer controls a broad spectrum of weeds, grasses and undesirable vegetation around trees, shrubs and ornamental plantings, along sidewalks, driveways, fences and patios, and around buildings and spot treatment in lawns. It is a systemic, non-selective, foliar applied herbicide that moves from the treated leaves and stems to the roots for complete control. Visible effects of an application may take up to one week or longer with complete kill in 2 to 4 weeks.

WHEN TO USE

To assure effective control, apply when weeds are actively growing. Use only clean water. Repeat application may be necessary to control hard to kill weeds and grasses. For best results, apply on a sunny day when the daytime temperature is at least 60°F. Apply only if the air is calm and rainfall is not expected within 12 hours. Do not use on or around edible food or food crops.

NOTICE: Seller makes no warranty, expressed or implied, concerning the use of this product other than indicated on the label. Buyer assumes all risk of use, and handling of this material when such use and/or handling is contrary to label instructions.

THE CHAS. H. LILLY CO.

Portland, Oregon 97218

EPA Reg. No. 802-535

EPA Est. No. E02 OR 1

BOTTLE LABEL

BEST DOCUMENT AVAILABLE

VIP Job # 7152
Morton Advertising (Lilly Knock-Out)
Galley # 1

PAMPHLET

LILLY/MILLER
Ready to use
Knock-Out
Weed & Grass Killer



ACTIVE INGREDIENT
Isopropyl 2,4-D 91.50%
INERT INGREDIENTS 8.50%
NET CONTENTS 24 OZ.

Kills weeds & grasses systemically, roots & all.

Keep out of reach of children
CAUTION
See back panel for additional precautionary statements

NET CONTENTS 24 OZ.

**PRECAUTIONARY STATEMENTS
HAZARDS TO HUMANS AND DOMESTIC ANIMALS**
CAUTION: Avoid contact with eyes, skin or clothing. Avoid breathing spray mist. In case of contact, immediately flush eyes with plenty of fresh water for 15 minutes. For skin, wash with plenty of soap and water. Get medical attention if irritation persists. Keep children and pets off treated areas until spray has dried. Avoid contamination of food or feed.
ENVIRONMENTAL HAZARDS
Do not apply directly to water. Do not contaminate water by cleaning of equipment or disposal of waste.

DIRECTIONS FOR USE
It is a violation of Federal law to use this product in a manner inconsistent with its labeling.

STORAGE AND DISPOSAL
Keep from freezing. Store this product in its original container and keep in a locked storage area out of reach of children and domestic animals. Do not reuse container. Rinse it thoroughly before discarding and securely wrap original container in several layers of newspaper and discard in trash.

READ ENTIRE LABEL AND ATTACHED PAMPHLET FIRST. USE ONLY AS DIRECTED, NOTING ALL CAUTIONS.

For **Knock-Out** Weed and Grass Killer controls a broad spectrum of weeds, grasses and undesirable vegetation around trees, shrubs and ornamental plants, along sidewalks, driveways, fences and patios, and around lawns and spot treatment in lawns. It is a systemic, non-selective, foliar app. herbicide that moves from the treated leaves and stems to the roots, giving complete control. Visible effects of an application may take up to 2 weeks or longer with complete kill in 2 to 4 weeks.

WHEN TO USE
To assure effective control, apply when weeds are actively growing. Use only clean water. Repeat application may be necessary to control hard-to-kill weeds and grasses. For best results, apply on a sunny day when the daytime temperature is at least 60°F. Apply only if the air is calm and rainfall is not expected within 12 hours. Do not use once around edible food crops.

NOTICE: Seller makes no warranty, expressed or implied, concerning the use of this product other than indicated on the label. Buyer assumes all risk of use and handling of this material when such use and handling is contrary to label instructions.

THE CHAS. H. LILLY CO.
Portland, Oregon 97218
EPA Reg. No. 602-535 EPA Est. No. 602-OR-1

EST DOCUMENT AVAILABLE

VIP Job # 7152
Morton Advertising (Lilly Knock-Out)
Galley # 1

30Y920 LABEL