

"Concerned with Cleanliness for over three generations"

GRACE-LEE SANITIZER

10% CONCENTRATE

"Liquid Quaternary Ammonium Product"

WARNING

KEEP OUT OF REACH OF CHILDREN
See other precautions on back panel.

Active Ingredients:

Alkyl (50% C ₁₄ , 40% C ₁₂ , 10% C ₁₆) dimethyl benzyl ammonium chloride	10.25%
Tetrasodium ethylene diamine tetraacetate	0.48%
Inert Ingredients:	89.27%

NET CONTENTS 1 U.S. GALLON

GRACE-LEE

- DETERGENTS
- SOAPS
- CLEANSERS
- FLOOR FINISHES
- WAXES
- POLISHES
- SEALS
- DISINFECTANTS
- DEODORANTS
- SOLVENTS
- CHEMICAL COMPOUNDS
- INDUSTRIAL CHEMICALS

Over 130

*Laboratory
Controlled*

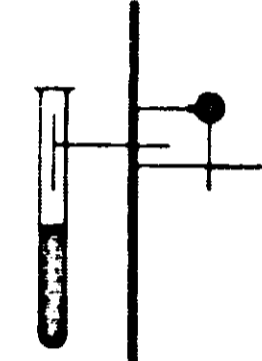
PRODUCTS

Net Contents: One Gallon

GRACE-LEE

products inc.

1414 Marshall N.E., Minneapolis, Minnesota 55413



ACCEPTED

MAR 24 1972

NET CONTENTS 1 U.S. GALLON

Net Contents: One Gallon

GRACE-LEE

products inc.

1414 Marshall N.E., Minneapolis, Minnesota 55413

ACCEPTED

JUL 24 1972

UNDER THE FEDERAL INSECTICIDE
FUNGICIDE AND ROENTICIDE ACT
FOR ECONOMIC PESTICIDE REGISTRY
EPA USE NO. 783-10

GRACE-LEE SANITIZER

In most states it is obligatory to use a sanitizer in the final rinse of the washing operation. G/L Sanitizer is an excellent sanitizer for Dairy, Poultry and Food Handling Plants. This product should only be used with compatible detergents like Grace-Lee Fect or Lime Clear.

The washing operation requires a three tank arrangement: Tank 1 - Detergent, Tank 2 - Rinse water, Tank 3 - Sanitizer.

SANITIZING

DIRECTIONS

1. Scrape and prewash utensils and glasses whenever possible.
2. Wash with Fect or Lime Clear.
3. Rinse with clean water.
4. Sanitize in a solution of 1 ounce of G/L Sanitizer per 4 gal. of water (200 ppm) immerse all utensils for at least two minutes or for the contact time specified by governing code.
5. Place sanitized utensils back to air dry. A final water rinse is not required.

GENERAL SANITIZATION

Use 1 ounce of G/L Sanitizer per 4 gallons of water (200 ppm). No rinsing is required after sanitizing. Sanitizer is not to be used for disinfecting.

WARNING KEEP OUT OF REACH OF CHILDREN

Caution: Irritation. Do not use near eyes, nose or mouth. Avoid contact with skin. Wash thoroughly with water if contact occurs. Avoid contamination of food and feed materials.

It will oxidize in the presence of a large quantity of water.

Avoid contact with eyes and skin.

EPA Reg. No. 783-10

GRACE-LEE

- DETERGENTS
- SOAPS
- CLEANSERS
- FLOOR FINISHES
- WAXES
- POLISHES
- SEALS
- DISINFECTANTS
- DEODORANTS
- SOLVENTS
- CHEMICAL COMPOUNDS
- INDUSTRIAL CHEMICALS

Over 130

*Laboratory
Controlled*

PRODUCTS

Net Contents: One Gallon

GRACE-LEE

products inc.

1414 Marshall N.E., Minneapolis, Minnesota 55413

