

Reg # 779-87

PM-15

10/24/89

191



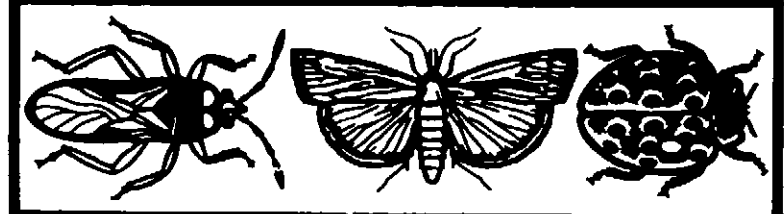
controls insects on
ornamentals, trees, shrubs,
fruits, vegetables & lawns

diazinon

25% spray concentrate

ACTIVE INGREDIENTS
O, O-diethyl O-(2-isopropyl-4-methyl-6-pyrimidinyl)
phosphorothioate 25%

INERT INGREDIENTS: 75%
100.00%



KEEP OUT OF REACH OF CHILDREN
WARNING
SEE SIDE PANEL FOR ADDITIONAL PRECAUTIONARY STATEMENTS
FAESY & BESTHOFF, INC.
EDGEWATER, N.J. 07020

This product must not be used on golf courses or sod farms.

NET CONTENTS: 1 GALLON

Caution to Humans and Domestic Animals
WARNING: Keep out of reach of children. May be fatal if swallowed. May be absorbed through the skin. Do not breathe spray mist. Avoid contact with skin, eyes and clothing. Wash thoroughly after handling and before eating or smoking. Safe to Fish: Diazinon is not listed as a carcinogen. 2-PAM is also accidental and may be administered with caution. Do not use on household pets or humans. Keep children and pets away from treated area until completely dry. Keep out of reach of domestic animals. Do not contaminate ornamental fish ponds.

Physical or Chemical Hazards
Do not use, pour, spill or store near heat or open flame.
Environmental Hazards
This product is toxic to fish, birds, and other wildlife. Birds and other wildlife feeding on treated areas may be killed. Keep out of any body of water. Do not apply when weather conditions favor drift from areas treated. Do not contaminate water by cleaning of equipment, or disposal of waste. Apply this product only as specified on this label.

This product is highly toxic to bees exposed to direct treatment or to residues remaining on the treated area. Do not apply when bees are actively visiting the crop, cover crop, or woods blooming in the treatment area. Applications should be timed to provide the maximum possible interval between treatment and the next period of low activity.

STORAGE AND DISPOSAL: Do not contaminate water, food or feed by storage and disposal.
Storage: Keep pesticide in original container. Do not put concentrate or dilute into food or drink containers. Avoid contamination of food and feedstuffs. Use contents within 6 months after opening.
Disposal: Do not reuse empty container. Wrap container and put in trash collection.

PROBLEM AREA	PESTS	DATE & AREA COVERED	NOTES
Vegetables: Tomatoes, Carrots, Potatoes, Beans, Cucumbers, Lettuce, Canteleups, Peppers, Cabbage	Mexican Bean Beetles, Aphids, Leaf Miners, Imported Cabbage worms, Cucumber Beetles	2 tbeqs. (1 fl. oz.) in 3 gals. of water covers 1,000 sq. ft.	Generally applications of 7-10 day intervals may be required. Do not apply within one day of picking tomatoes, 35 days of harvesting potatoes, or 14 days of picking of other crops listed in this section.
Cabbage, Carrots, Corn, Lettuce, Pump, Pile Beans, Bushbeans, Red Beans, Turnips, Snap Beans, Tomatoes	Caterpillars (Surface and Subterranean), Wireworms, Root Maggots, Garden Symphyla, Nolo Grubs	Apply 15 fl. oz. per 1,000 sq. ft. as a soil treatment in sufficient water to obtain thorough coverage.	Make application to soil surface as a broadcast spray prior to planting. Thoroughly mix the chemical into the top 4-8 inches of soil.
Balcony Plants in Outside Areas:	Flies, Ants, Cockroaches, Bedbug Bugs, Clover Mites, Spiders, Ticks, Chiggers, Earwigs	Add 8 fl. oz. per 3 gals. of water.	Thoroughly spray window frames, doors, sills, screens, porch & patio walls & ceiling, foundations, walks, garbage cans & into cracks & other places where insects may hide. Do not treat plants or animals with this dosage rate.

E.P.A. Reg. No. 779-87 E.P.A. Est. No. 779-NJ-1 2-82

Step #1: Determine size of spraying job. For lawns and vegetables measure the area to be sprayed. For all other applications apply as a thorough cover spray. Make applications when insects first appear, or in advance of an expected infestation. Repeat applications as needed or as noted in the rate chart.

Step #2: Use clean sprayer. Carefully measure and mix the amount of Diazinon and water as suggested in the chart below.

Step #3: Spray as directed in rate chart. Use coarse drizzling sprays for lawns, soil, and other surface applications. Use medium-fine mist sprays for trees and plants. Thorough coverage is important. Flush sprayer with clean water after each use.

Note: Do not use on certain ferns, poinsettias, tobacco, papaya, pine and gardenia, and orchids since injury may occur.

NOTE: Buyer assumes all responsibility for safety and use not in accordance with directions and manufacturer's warranty is limited to purchase price of the container.

Rate Chart for Applying F & B Diazinon 25% Spray Concentrate

PROBLEM AREA	PESTS	DATE & AREA COVERED	NOTES
Lawns: Bluegrass, Marion, Fescue, St. Augustine, Richmond, Bent, Bermuda	Chinch Bugs* Sod Webworms, Bermuda Mites, Ants, Ticks, Earwigs, Lawn Billbugs	2 tbeqs. (1 fl. oz.) in 3 gals. of water covers 125 sq. ft. 8 fl. oz. in 24 gals. of water covers 1,000 sq. ft.	Thoroughly wet down grass a few hrs. before applying. For lawn Billbugs, water lawn thoroughly after treatment. *In the north, if Chinch Bugs are the only insect problem a lower rate of application can be used. 2 tbeqs. in 3 gals. of water covers 250 sq. ft.
	Millipedes	4 tbeqs. (2 fl. oz.) in 3 gals. of water covers 125 sq. ft. 16 oz./24 gals. water covers 1,000 sq. ft.	
	Rhodes-grass Scale Crawlers	2 tbeqs. (1 fl. oz.) in 3 gals. of water covers 100 sq. ft. 16 oz./30 gals. water covers 1,000 sq. ft.	Apply when Scale Crawlers first emerge.
Flower & Flower: Roses, Azaleas, Chrysanthemums, Gladioli, Carnations	Aphids, Mites, Leafhoppers, Thrips	2 tbeqs. (1 fl. oz.) per 3 gals. of water. Apply as a thorough foliar spray.	Spray underside of leaves. Wet plants to the dripping point.
Tree & Shrub: Oak, Maple, Locust, Holly, Boxwood, Pine, Spruce, Willow	Aphids, Mites, Scale Crawlers, Leaf Miners, Bagworms	2 tbeqs. (1 fl. oz.) per 3 gals. of water. Apply as a thorough foliar spray.	Wet leaves and branches to the dripping point. Try to penetrate dense foliage.
Fruit: Apples, Peaches, Grapes, Plums, Grapes, Cherries, Strawberries	Codling Moths, Mites, Aphids, Leaf rollers, Scale Crawlers	2 tbeqs. (1 fl. oz.) per 3 gals. of water. Apply as a full cover spray.	Start spraying after blooming and repeat at 10 to 14 day intervals if needed. Do not spray fruit within 21 days of picking.

135

Not Reviewed. Registrant claims to be in accordance with Reregistration of Pesticide Product Guidance for Phase 2 Response, Page 2.12, Active to Inert Change in Status.

