



UNITED STATES ENVIRONMENTAL PROTECTION AGENCY
WASHINGTON, DC 20460

OFFICE OF CHEMICAL SAFETY
AND POLLUTION PREVENTION

July 27, 2021

Deanna Mansueto
Reckitt Benckiser Inc.
Morris Corporate Center IV
399 Interpace Parkway
Parsippany, NJ 07054-0225

Subject: Label Amendment – Adding pet-specific marketing claims and Use Directions
Product Name: T-Bone
EPA Registration Number: 777-139
Received Date: May 4, 2021
Action Case Number: 00298135

Dear Ms. Mansueto:

The amended label referred to above, submitted in connection with registration under the Federal Insecticide, Fungicide and Rodenticide Act (FIFRA), as amended, is acceptable. This approval does not affect any conditions that were previously imposed on this registration. You continue to be subject to existing conditions on your registration and any deadlines connected with them.

A stamped copy of your labeling is enclosed for your records. This labeling supersedes all previously accepted labeling. Pursuant to 40 CFR 156.10(a)(6) you must submit one copy of the final printed labeling before you release the product for shipment with the new labeling. In accordance with 40 CFR 152.130(c), you may distribute or sell this product under the previously approved labeling for 18 months from the date of this letter. After 18 months, you may only distribute or sell this product if it bears this new revised labeling or subsequently approved labeling. "To distribute or sell" is defined under FIFRA section 2(gg) and its implementing regulation at 40 CFR 152.3.

Should you wish to add/retain a reference to the company's website on your label, then please be aware that the website becomes labeling under FIFRA and is subject to review by the Agency. See FIFRA section 2(p)(2). If the website is false or misleading, the product would be misbranded and unlawful to sell or distribute under FIFRA section 12(a)(1)(E). 40 CFR 156.10(a)(5) lists examples of statements EPA may consider false or misleading. In addition, regardless of whether a website is referenced on your product's label, claims made on the website may not substantially differ from those claims approved through the registration process, FIFRA section 12(a)(1)(B). Therefore, should the Agency find or if it is brought to our attention that a website contains false or misleading statements or claims substantially differing from the EPA approved registration, the website will be referred to the EPA's Office of Enforcement and Assurance.

Page 2 of 2
EPA Reg. No. 777-139
Action Case Number 298135

Your release for shipment of the product constitutes acceptance of these conditions. If these conditions are not complied with, the registration will be subject to cancellation in accordance with FIFRA section 6. If you have any questions, please contact Stacey Grigsby by phone at 703.305.6440, or via email at grigsby.stacey@epa.gov .

Sincerely,

A handwritten signature in cursive script that reads "Stacey Grigsby".

Stacey Grigsby
Regulatory Risk Manager
Regulatory Management Branch II
Antimicrobials Division (7510P)

Enclosure: Accepted Stamped Label

<< FRONT PANEL >>

ACTIVE INGREDIENT:

Citric Acid. 2.78%

OTHER INGREDIENTS: 97.22%

TOTAL: 100.00%

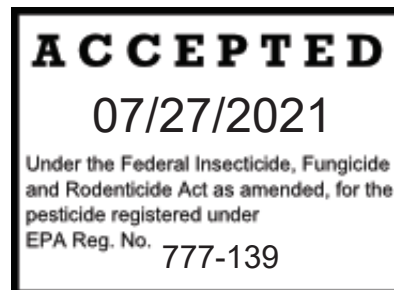
KEEP OUT OF REACH OF CHILDREN

CAUTION: See (back) (side) panel for additional precautionary statements.

(NET CONTENTS:) X
X + X

(___ x ___) inches
(___" x ___")

Pouch	Count	Wet cloths	Container
Canister	Individually Wrapped	Wet wipes	Pack
Box	Pre-Moistened	Wet wipe rolls	Peel & reseal (package)
ct	Towelettes	Wet mopping cloths	Package
Wipes	Floor	Refill	Resealable
Flatpack	Handi-pack	Disposable	Reusable
Flexible pack			



(Does not include weight of dry wipe)
(Includes weight of absorbent (wet) (mopping) (wipe) (cloth)) (___ OZ.) (___ LB. ___ OZ.) (___ g)

<< FRONT / BACK PANEL >>

EPA Reg. No.:	777-139			
EPA Est. No.:	777-NJ-2 (Y) (YY)	777-IL-1(Y) (YY)	52631-NJ-001(Y) (YY)	8251-WI-003 (Y) (YY)
	777-MO-001 (Y) (YY)	777-POL-001(Y) (YY)	41925-WI-001(Y) (YY)	8251-WI-005(Y) (YY)
	777-PA-001(Y) (YY)	082206-NY-003(Y) (YY)	475-MO-001(Y) (YY)	70930-PA-001(Y) (YY)
	50757-WI-1(Y) (YY)	082206-NY-002(Y) (YY)	63650-WI-1 (Y) (YY)	475-PA-1 (Y) (YY)
	777-GA-1 (Y) (YY)	74291-MO-1 (Y) (YY)	777-MO-002	87871-NY-1 (Y) (YY)
	87871-NY-2 (Y) (YY)	8251-OH-001		

See (bottom) (side) (cap) (for Lot / Date code)
(Beginning of) (batch) (lot) code indicates EPA (Est.) (Establishment) (#) (No.) (Number)

See (batch) (lot) code for EPA (Est.) (Establishment) (#) (No.) (Number)

<< BACK PANEL >>

Questions? (📞) (Call:) (1-800-228-4722) (1-xxx-xxx-xxxx)
 For (more) ingredient (and other) information, www.rbnainfo.com (website)
 (US Patents: (www.rb.com/patents) (www.reckitt.com/patents))
 (Made in U.S.A.) (Made in {insert country}) © {year} (RB)(Reckitt)
 Distributed by: (Reckitt Benckiser)(Reckitt), Parsippany, NJ 07054-(xxxx)
 Contains no (phosphates) (ammonia) (silicones)
 This (canister) (container) (pouch) (pack) is made of x% post-consumer recycled plastic.

NOTE: Bracketed information is denoted as: << directive >>, { insert as noted }, (optional text), [required qualifier].
 The text "hard, non-porous surface(s)" will be disclosed in the use direction or in the claims.
 The term "this product" used throughout this document may be replaced with the marketed product brand name.
 To use the term "germ" the product must be efficacious against 2 of the 3 major classes of organisms.
 The product label must identify the specific bacteria, virus, fungus & mold.
 The term (x) is a placeholder that represents a number between 1 and 99.
 The term "Y" is a place holder for a character A – Z.

Company graphic logo



<< **BACK PANEL – Optional text** >>

Important facts (about this product):

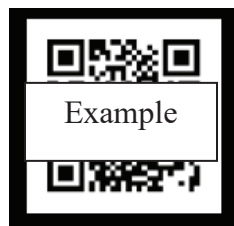
IMPORTANT: For directions for use and first aid instructions in Spanish, please call 1-877-843-3817.

<< Spanish Translation >>

IMPORTANTE: Para instrucciones de uso y primeros auxilios en español por favor llame al 1-877-843-3817.

Learn more about (the importance of good hygiene habits) (and) (the appropriate use of disinfectants) (in good hygiene) (and the many ways that Lysol® is promoting good hygiene habits) (for your family and community)

(Be a Part of Lysol®) (Learn more about Lysol®)



(Use your phone to) (and) (or) (scan) (the) (tag) (or) (this code) (to learn) (or) (to) (see) (more) (uses) (or) (information) (videos) (on how to use) (this product) (for) (how to) (tips)

(Download) (NOW) (the) (for) (FREE) (Available) (at/on) (the) ({{Insert for Lysol® app logo}}) ({{Insert Apple App store icon}}) ({{Insert Google Play icon}}) ({{Insert Alexa icon}}) (app) ((to) (and) help track the daily cold & flu) ((to) (and) get prevention tips) ((to) (and) help stay ahead of cold & flu) ((to) (and) stay informed about the cold & flu) ((to) (and) learn more about the cold & flu) ((to) (and) see what illnesses are going around) ((to) (and) (help) track the spread of (germs) (illnesses)) ((to) (and) (help) stay informed about (the) (germs) (illnesses))

(Or) (just) Ask Alexa ({{Insert Alexa icon}}) ((to) (and) help track the daily cold & flu) ((to) (and) get prevention tips) ((to) (and) help stay ahead of cold & flu) ((to) (and) stay informed about the cold & flu) ((to) (and) learn more about the cold & flu) ((to) (and) see what illnesses are going around) ((to) (and) (help) track the spread of (germs) (illnesses)) ((to) (and) (help) stay informed about (the) (germs) (illnesses))

<< **NOTE: Any claim may appear on either FRONT / BACK panel in bullet / paragraph format – Unless otherwise noted.** >>

<< **INTRODUCTORY 6-mos. CLAIMS – will only appear on graphic label for the first 6 months product is on shelf** >>

(Better) (improved) (cleaning)

(New) (&) (Now) (Improved) (More) (Better) (cleaning power) (performance) (of) (everyday) (messes) (vs. previous Lysol® wipes)^{(2) (8)}

(New) (and) (&) (improved) (long lasting) (longer lasting) (look) (lighter) (refreshing) (softer) (gentle) (fragrance) (scent) (Performance)

(New) (and) (&) (improved) (stronger) (thicker) (better) (revolutionary) (innovative) {insert pattern / texture – See Appendix 2}

(New) {insert pattern / texture – See Appendix 2} cleans (picks up)

(New) {insert pattern / texture – See Appendix 2} for (better) (easier) cleaning

(New) {insert pattern / texture – See Appendix 2} that traps (and locks) (more) (messes)

(New) (Low-Streak) (Lower-Streak) Formula

New lower streak formula that leaves less streaks than before, even on your shiniest surfaces

NOTE: Bracketed information is denoted as: << directive >>, { insert as noted }, (optional text), [required qualifier].

The text "hard, non-porous surface(s)" will be disclosed in the use direction or in the claims.

The term "this product" used throughout this document may be replaced with the marketed product brand name.

To use the term "germ" the product must be efficacious against 2 of the 3 major classes of organisms.

The product label must identify the specific bacteria, virus, fungus & mold.

The term (x) is a placeholder that represents a number between 1 and 99.

The term "Y" is a place holder for a character A – Z.

(New) (wipe) (wet) (mopping) (cloth) {insert pattern / texture – See Appendix 2} (traps) (locks) (locks in) (picks up) (more) ({insert soils / allergens – See Appendix 2})⁽²⁾⁽⁸⁾
 (New Size) (New Large Size) (New X-tra Large Size) (Wipe) (Cloth) (Canister) (Package)
 (New) tougher (wipe) (wet) (mopping) (cloth) (for tougher cleaning) (for your tougher jobs)
 (New) (Active) Lift (Cleaning) (Technology) ⁽²⁾⁽⁸⁾
 (New) (Easy) (Dispensing) Cap
 (New) (Citric Acid) Formula
 (New) (Improved²) (Stronger²) (Better²) Cleaning Formula to (power through) (eliminate) (clean) (soap scum) (grime) (bathroom soil) (&) (and) {insert soil from Appendix 2}
 (New) Lysol Smart Dispense System (Starter) (Kit)(Pack) (uses)(saves) 60% (less) plastic (vs.) (using) (traditional) Xct (Lysol® canisters)
 New (thicker) (thick) (&) (strong) wipe
 New (softer) (soft) (but) (&) strong wipe
 New (softer) (soft) (thicker) (thick) (but) (&) (strong) wipe for (better) (superior) (unbeatable) cleaning²
 New (softer) (soft) (thicker) (thick) (but) (&) (strong) wipe for (better) (superior) (unbeatable) dirt lifting²
 New (softer) (soft) (thicker) (thick) (but) (&) (strong) wipe for (better) (superior) (unbeatable) (Grease) Cutting²
 New (softer) (soft) (but) (&) (strong) wipe to (power through) (eliminate) (clean) (soap scum) (grime) (bathroom soil) {insert soil from Appendix 2}

<< CROSS-PROMOTIONAL CLAIMS >>

Like {insert Lysol® brand name} (trigger)(cleaner)? Try (our) {insert Lysol® brand name} {insert picture of Lysol® Disinfecting Wipes}
 Like this (fragrance)(product)? Try (our) other Lysol® products {insert picture of Lysol® products}
 Try our other Lysol® (cleaning)(disinfecting)(sanitizing) (products)(fragrances) {insert picture of Lysol® products}
 Try our Lysol® family of (cleaning)(disinfecting)(sanitizing) products {insert picture of Lysol® products}

<< FRAGRANCE CLAIMS >>

Aloe	Coconut Water & Sea Minerals	(Fresh) (Mint)	(Key Lime)	Orchard
(and) (&)	Cool Wave	Fruit(s)	Lavender	(Oxygen) (Splash)
Apple	(Cool) Adirondack Mountain (Air)	Gardenia		Pear
Aqua	Cranberry	Ginger(lily)	Lemon	Peony
(Aromatic) (Garden)	Crisp Linen	Ginseng	Lime	(Perfume)
(Autumn) (Wood(s))	Cucumber (&) (Sage) (Lemongrass)	Grapefruit	Lily	Rain(fall)
(Berry) (&) (Basil)	Driftwood Waters		Linen	Rosewood & Cardamom
Blossom(s)	Early Morning Breeze	(Grasslands) (Fresh)	Lotus	Scent(s)) (Scented)
(Blue) Agave	Eucalyptus	Green	Mandarin	(Smell)
Brand New Day	Eucalyptus & Garden Spices	Green Tea		(Spring) Waterfall
Breeze	Field(s)	(Green) (Meadows)	Mango	Summer
Brighter Horizons	(Florida) (California)		(Meyer) Lemon	(Tropic) (Thunder)
Citrus (Meadows)	(Fragrance) (Free)	Hawaii	(No)	(Tropical) (Escape) (Paradise)
Citrus	Fresh (Waterfall)	Herbal	Ocean (Atlantic)	(Unscented)(Unfragranced)
		Herbs	Open Window	Variant(s))
Citrus Sparkle Zest	Fresh	Hibiscus	Orange	White (Sails)
Clean	Fresh Waters	Jasmine	Orange Blossom	White Lavender & Cedarwood

NOTE: Bracketed information is denoted as: << directive >>, { insert as noted }, (optional text), [required qualifier].
 The text “hard, non-porous surface(s)” will be disclosed in the use direction or in the claims.
 The term “this product” used throughout this document may be replaced with the marketed product brand name.
 To use the term “germ” the product must be efficacious against 2 of the 3 major classes of organisms.
 The product label must identify the specific bacteria, virus, fungus & mold.
 The term (x) is a placeholder that represents a number between 1 and 99.
 The term “Y” is a place holder for a character A – Z.

Coconut			Wildflower
---------	--	--	------------

The following can be the beginning/end of any fragrance:

(Zest) (Spritz) (Essence) (Mist(y)) (Bloom) (Garden) (Bliss) (Calming) (Morning) (Meadows) (Cool) (Air) (Country) (Crisp) (Energy) (Spice) (Floral) (Hint of) (Fields) (Lush) (Pure) (Sheer) (Sparkling) (Burst) (Blast) (Bay) (Wave(s)) (Blue) (Sun-Kissed) (Bouquet) (French) (Cascading) (Blend) (Fresh-picked) (Ripe) (Rustic) (Fusion) (Crystal) (Dew) (Medley) (Fruit(y)) (Escape) (Power) (Herbal) (Island) (and) (Harvest) (Valley) (Whisper) (Soft) (Gentle) (Simple) (Simply) (Serene) (Shower) (Glacier) (Stream) (Petals) (Early) (Modern) (Fresh) (Floral) (Cucumber (Red) (Fruits) (Mango) (Escape) (Freshcut) (Herbs) (Sea Salt) (Minerals) (Aloe) (Wild) (Infusion) (Berries)

(Scents) (Fragrances) for (every room) (all round) (the) (kitchen) (bathroom) (house) (your home)

Specially crafted fruity fragrance that reminds you of a warm tropical breeze.

Specially crafted fragrance to brighten your cleaning experience.

Specially crafted fragrance that embodies (the) fresh invigorating notes of a country breeze.

Specially crafted fragrance (with (hints) (special) (notes) of berries and herbs) (that) (indulges) (reminds) (captures) (you) (with) (the) (of) (with the essence of freshly picked berries in the orchard) (freshly picked berries at a farm) (captures the fresh morning air with hints of freshly picked berries) (you of a walk through the orchard). (Get ready for a Fresh Start!)

<< PACKAGING CLAIMS >>

(X)(x)(%) (Free) (Lysol®) (More) (Dual) (Action) (Mopping) (Wet) (Wipes) (Cloths) (Multi) (Size) (Range) (Pack) (Canister) (Package(s)) (Refills) (Each) (Extra) (Total) (With) (Free) (Bonus) (Amazing) (Economy) (Great) (Jumbo) (Larger) (Mega) (Portable) (Pocket) (Purse) (Travel) (Trial) (Super) (To Go) (Travel) (Trial) (Tub) (Pouch) (Value) (!)

X (canisters) (containers) with x refill (pouches)

(x) (%) (More) (Wipes) (Mopping) (Cloths) (Value) (*) (when compared to (x) ct (canister) (package)) ((*vs. Lysol Disinfecting Wipes) ({insert brand name}) (x) (ct)

(x) (Wipes) (Cloths) for the price of (x) (!)

(X) (X Pack) (X Wipes)

X Wipes + X Wipes (=) X Wipes

X(x) (%) more wipes⁸ (for the price of X)

(X%) Less plastic packaging (vs Lysol wipes)⁸

(80%) (X%) less plastic than wipes canisters) (vs Lysol wipes)⁸

(+) (x) (Pack) (Free) (Wipes)

X times (refillable)(reusable) (dispenser)(system)(container)

1x Refill (Wipe)

1 (Refillable)(Reusable) (Dispenser)(Container)

2 (for) (in) 1 Pack (!)

2-Go

(2) (3) (X) Scent(s) (pack)

(110 (Wipes) (Cloths) for the price of 80)

(100%) (fully) Recyclable (canister) (packaging)

(A) Simple refillable system

A simply refillable system with reusable dispenser that eliminates (60%)(x%) of single use plastic from your cleaning (and/&) disinfecting routine, while ensuring your best wipes experience(!)

Also available (in)(as) (the) (a) (X) (count) (size) (pack)

Basic (Wipes)

(Better) value (⁸) ((when compared to (X) ct (canister) (package)) ((*vs. Lysol Disinfecting Wipes) ({insert brand name}) (x) (ct))

(Better³) (Improved³) (Hassle-free) (Easy) (One-handed) dispensing –or–dispenser

Blends beautifully on your (kitchen) countertop(s)

(Bonus) (Free) Lysol Disinfecting Spray (To Go) (1oz) (inside)

(Buy (x) Get (x) Free!) (Total _____ Wet (Wipes) (Mopping) (Cloths)) (1 x 28) (1 x 35) (___ x ___)

Buy (X) (plus) (and) get (a) Bonus (Dual Action) (Wipes) (Cloths) (Canister) (Package)

Buy Lysol Disinfecting Wipes (X) (pack) (and) Get Lysol Disinfecting Spray (To Go) (1oz) Free

NOTE: Bracketed information is denoted as: << directive >>, { insert as noted }, (optional text), [required qualifier].

The text "hard, non-porous surface(s)" will be disclosed in the use direction or in the claims.

The term "this product" used throughout this document may be replaced with the marketed product brand name.

To use the term "germ" the product must be efficacious against 2 of the 3 major classes of organisms.

The product label must identify the specific bacteria, virus, fungus & mold.

The term (x) is a placeholder that represents a number between 1 and 99.

The term "Y" is a place holder for a character A – Z.

T-BONE

EPA Reg. No.: 777-139

Amendment: April 13, 2021

Page 5 of 35

(Contains) (made of) (X%) (post consumer recycled content) (recycled plastic) (ocean plastic) (X% less plastic) (bottles)
(containers) (vs pervious Lysol wipes) ⁽⁸⁾
Convenient (single)(wipe) (dispensing)
(Convenience) (convenient) size
Compact (and)(&) Convenient (dispensing) (cleaning)
(ct) (Wipes) (Wet) (Mopping) (Cloths)!
Disinfection (Value) Pack
Dispenses (Comes out) (1)(one) (wipe) (cloth) at a time
Dispense(s) (wipes) with (only) (just) one hand
(Drops) (Slides) into an empty (disinfecting) (wipes) (canister) (-or-) (container)
(Easy) (Convenient) (Simple) (Quick) to (dispense) (refill) (use) (1)(wipe) (at a time)
(Easier) (Simpler) (way) (than ever) to (dispense) (use)³
(Easy) (Dispensing) Cap
(Easily) Grab (wipes) one at a time
Easy open (easy fill)
Easy pull (from start to finish)
Easy to carry (around the house)
Easy to (refill) (store) (stack)
Effortless dispensing (!)
Extra Value at no Extra Cost (!)
(Extra) (Large) (size) (wipes) (great) (perfect) for large (cleaning) jobs!
Fills (x) (ct) (size) (wipe) (cloth) (canisters) (peel & reseal) (package) (packages)
Fits (in) (your) (car) (glove compartment) (cup holder) (purse) (bag) (gym bag) (diaper bag) (almost anywhere)
FREE SAMPLE – NOT FOR RESALE
Goodbye (to) single use plastic (canisters)(containers)
Grab (and)(&) Go
Great for the (road) (travel) (travelling)
(Guaranteed)(Guarantees)(Provides) (1)(one) wipe at a time
(Guaranteed)(Guarantees) to dispense (1)(one) wipe at a time
(Handy)(Easy)(Convenient) (lightweight) packaging
Helps you clean (and)& disinfect while (reducing)(eliminating) (single use) (plastic)
(It) (Eliminates)(saves) 60% of (single use) plastic
(It)(The) (Lysol®) Smart Dispense (system) (ensure(s)) better (wipes)(user)(usage) experience
(It) (Perfect(ly)) fit(s) (for)(on) any (countertop)(room) (around the home)
Keep -or- Carry (one) (some) (a package) (pouch) (pack) in your (purse) (diaper bag) (backpack) (gym bag)
(Lightweight) (refill) (pouches)(pack) can be stored neatly in(to) any bag for use on the go
Limited time value (pack)
Moisture Lock (lid) (cap)
Moisture retention (lid) (cap)
Mini (pack)
(x) (ct)
Moisture lock
More scents (for) more rooms
(More) value, same price
(More) (Wipes) (Cloths) (!) (x) ct
Multi (-fragrance) (-scent) pack
(No)(significantly)(less)(reduced) breaking
(No)(significantly)(less)(reduced) bunching
(No)(significantly)(less)(reduced) roping
Not for retail sale
On the Go
One-handed (dispensing) (dispenser) (opening) (for easy access)
Opens with one hand
Opens with a simple (click)(push)(press of)(push of) a button (for easy access)
Our (best) (easiest) (smoothest) dispensing ever⁽³⁾(!)

NOTE: Bracketed information is denoted as: << directive >>, { insert as noted }, (optional text), [required qualifier].
The text "hard, non-porous surface(s)" will be disclosed in the use direction or in the claims.
The term "this product" used throughout this document may be replaced with the marketed product brand name.
To use the term "germ" the product must be efficacious against 2 of the 3 major classes of organisms.
The product label must identify the specific bacteria, virus, fungus & mold.
The term (x) is a placeholder that represents a number between 1 and 99.
The term "Y" is a place holder for a character A – Z.

T-BONE

EPA Reg. No.: 777-139

(Patent(ed)) (pending) (dispensing) (technology)

Pop Up (Cap)(Top)

(Press) (cut) (open) (tear) here

Pull Up Here

(Pull) (Get) 1 wipe at a time, every time!

(Quick) (Ready) (Pull) (Dispense) (Dispensing)

Recyclable through the Terracycle® network of collection programs.

Redesigned dispenser

Refill (x) Pack

Refill (and/&) reuse

Refillable

Refills (now) available

Resealable (twin) (pack)

(Reusable)(Refillable) (Lysol®) Smart Dispense(r) (container) can be (used)(refilled) up to X times

Same Lysol Wipes (that you love), Easier⁸ to (use) (dispense) (grab)

SAMPLE ENCLOSED – NOT FOR RESALE

Saves (X%) of plastic vs. Lysol® Disinfecting Wipes Xct

Scratch (and / &)(N) Sniff

Scratch (Me)(Here)

(Simplify)(Improve) your (cleaning)(dispensing)(user)(usage) experience

(Simplified)(Improved) (cleaning)(dispensing)(user)(usage) experience

Single (sheet) (wipe) dispensing(!)

(Small) (size) (wipes) (great) (perfect) for small (cleaning) jobs!

Take it with you

(Take) (Carry) (it) (this product) (anywhere) (everywhere)

(Tear) (open) (here) (to open)

(The (Elegant) and (Sleek)(modern)(state of the art) (refillable)(resuable) smart (dispense(r))(container)

(The) (Lysol® Smart Dispense) (System) is easy to (use) (refill) and (reuse)

(The) (Reusable) (Lysol®) Smart Dispense(r) is (built)(designed) to last lifetime³

(The) (reusable) (smart dispense(r)) (container) (is made of)(contains) x% (of) post-consumer recycled plastic

This (product){(insert Lysol® brand name)} is a (dispenser)(container) + refill (wipes) system that delivers (surface) disinfection while helping to reduce plastic pollution

Try (Me) (For) (Free) (Out) (Rebate)

Two ways to use

(Uniquely)(Designed to) Eliminate(s) (breaking)(bunching)(roping)

(Universal) Refill (Pack)

Use in (x) ct (canister) (peel & reseal) (pack) (package)

Use less plastic

VEOCEL™ is a registered trademark of Lenzing AG

Welcome to the Lysol® Smart Dispense System

Wipes stay (wet) (moist)

Conditions of Sale and Warranty: (Money back guarantee)/(satisfaction guarantee) (Satisfaction guaranteed or your money back), (limit one per household) To the extent consistent with applicable law: (A) Reckitt Benckiser makes no other warranties express or implied, including warranties of fitness for particular purpose or merchantability, (B) Buyer's exclusive remedy and Reckitt Benckiser's and Seller's exclusive liability, whether in contract, tort, negligence, strict liability, or otherwise, shall be limited to repayment of the purchase price of the product, and (c) Reckitt Benckiser and the seller disclaim any liability for consequential, incidental, special or indirect damages resulting from the use of handling of this product. Reckitt Benckiser and the seller offer this product, and the Buyer and User accept it, subject to these Conditions of Sale and Warranty which may be varied only by agreement in writing signed by a duly authorized representative of Reckitt Benckiser. Visit Lysol.com for more information on guarantee or call xxx.xxx.xxxx

<< PURCHASE / SCHOOL SUPPLY PACKAGE CLAIMS >>

(+) \$(X) for your school with Box Top(s)

1 for every room, including the classroom!

(X) + (X) Free (=)(equals) (X)

x box tops, clip (them) ('em) now and get (money) (cash) for your school

NOTE: Bracketed information is denoted as: << directive >>, { insert as noted }, (optional text), [required qualifier].

The text "hard, non-porous surface(s)" will be disclosed in the use direction or in the claims.

The term "this product" used throughout this document may be replaced with the marketed product brand name.

To use the term "germ" the product must be efficacious against 2 of the 3 major classes of organisms.

The product label must identify the specific bacteria, virus, fungus & mold.

The term (x) is a placeholder that represents a number between 1 and 99.

The term "Y" is a placeholder for a character A – Z.

T-BONE

EPA Reg. No.: 777-139

Amendment: April 13, 2021

Page 7 of 35

(x) for you / (x) for the classroom

(X) Box Tops for Education (™)

(x) Box Tops on (back) (side) of pack

(x) eBoxTops™ No Purchase Necessary see (side) (back) for details

(x) prizes to win!

(X)(%) free for (your) (school)(class) (and / &) (college)(university)

A school supply (item) to (help) kill germs (**)(¹)

(An) (Important) school supply checklist (item)(¹)

Back to school (item) (special) (value) (limited time) (limited edition) (pack) (¹)

Back to school doesn't have to mean back to germs (**) (with Lysol®)

Back to school back to clean(!)

Back to school (checklist)(essentials)(needs) (for) (disinfecting)

Back to school Supply Value Pack (¹)

Be ready for school with Lysol® at home

(x) Bonus box tops

Box Tops for Education and associated words and designs are trademarks of General Mills, used under (a) license. ©General Mills

(Buy) (x) for Teacher (/)(+)(and)(&) (x) for Home (¹)

(Buy) (x) for Home (/)(+)(and)(&) (x) for Teacher (¹)

(Buy) (x) for Kitchen (/)(+)(and)(&) (x) for Bath / (1)(x) for Living Room

(Buy) (x) for School (/)(+)(and)(&) (x) (for) Home (¹)

(Buy) (x) for Home (/)(+)(and)(&) (x) for School (¹)

(Buy) (x) for Home (/)(+)(and)(&) (x) for Office

(Buy) (x) for Office (/)(+)(and)(&) (x) for Home

Buy (3)(x) Get 1 Free (for) (to) (give) (to) (your) (School) (Classroom) (Teacher) (¹)

Buy Lysol and get \$x to donate / help support your school

Buy Lysol, earn \$ for your school

Buy x, get x free for your teacher

Buy (Lysol (Disinfecting Wipes)) (this product) (this pack) and get (X) (Box Tops) for your (school) (classroom)

Buy (Lysol (Disinfecting Wipes)) and get (X) (Box Tops) (donated) (to) (support) (help) your school

Buy (Lysol (Disinfecting Wipes)) (and) earn (money) (\$) for your school

Buy (Lysol (Disinfecting Wipes)) (this product) (this pack) and Lysol® will donate (X) canister(s) to (a) school(s) in need

Buy (x) Get (x) (free) for your (school) (teacher) ((+) \$(X) for your school with Box Top(s))

(Buy) (x) for you / (x) for school

(Buy) (Lysol) (give) (money)(cash)(\$ (to) (your) (school) (+X) (free) (for) (your) (school)(classroom) (BoxTops) (=) (\$) (for)

(computers)(text)(books)(playground)(equipment)(supplies) (and / &) (more)(!)

Buy (x) Lysol (get) (x) (free) (earn) (cash)(\$ (for) (your) (school) (with) (every) (purchase)

Buy this (pack) (product) and Lysol® will donate \$X to {insert non-profit}

Check Lysol off the list

Do not remove [label] [sticker]/((cut out) Box Tops for Education proof of purchase until product has been ((completely) (used) (finished) (emptied)))

Don't forget to bring to school (!)

Earn (more) (money) (\$\$) (cash) for your school (!)

Earn (X)(x) Box Top(s)(\$ for Education

Earn (x) bonus BoxTop(s)

Enter this code online at (enter URL here) with code (x) and see if you've won

For every Lysol (X)x(X)ct specially marked (Disinfecting Wipes) (pack) sold, Lysol® will donate (X) Lysol ((X)ct) (Disinfecting Wipes) canister(s) to our partners who will then distribute (products) (wipes) to (a) school(s) in need

For (Mom) (Mother) (School) (Teacher) (Classroom)

Free for (your) (class(room)) (and / &) (school)

Get ready for back to school (¹)

Get \$x for YOUR school

Get (x) Box Tops for your (school) (classroom)

Go to boxtops4education.com for details

Great value for back to school

NOTE: Bracketed information is denoted as: << directive >>, { insert as noted }, (optional text), [required qualifier].

The text "hard, non-porous surface(s)" will be disclosed in the use direction or in the claims.

The term "this product" used throughout this document may be replaced with the marketed product brand name.

To use the term "germ" the product must be efficacious against 2 of the 3 major classes of organisms.

The product label must identify the specific bacteria, virus, fungus & mold.

The term (x) is a placeholder that represents a number between 1 and 99.

The term "Y" is a place holder for a character A – Z.

T-BONE

EPA Reg. No.: 777-139

Amendment: April 13, 2021

Page 8 of 35

(Great)(Perfect)(Essential) for (school) (and / &) (home)
(Give) (back) (more) (\$) (money) (dollars) (to) (your) (school) (and / &) (local) (community) (only) (with) (Lysol)
(Help a school in need) (-) (For every purchase,) Lysol® will donate (X) canister(s) to (a) school(s) (in need) (for every pack sold) (when you buy (Lysol (Disinfecting Wipes)) (this product) (this pack))
Helps Mom
(Hey) (Mom(s)) (Teacher(s)) (Be) (Are you) (Ready for) ((back to) school) (the) (cold and/or flu season) (?) (!)
(Hey) (mom) take this to school (!)
(Important) school supply checklist (item) ⁽¹⁾
(Key) Back to school shopping list (item) ⁽¹⁾
(Lysol®) HERE for schools
Lysol supports (teachers) (schools) (classrooms) (students)
(Mom(!)) Be ready for back to school (with Lysol®)
More Cash for your school
No more clipping
Official Box Top(s) (\$) for Education Brand
(Over) (\$1,000,000) (\$1MM) (\$1MM+) (\$X) (donated) (earned) (contributed) (to) (your) (American) (local) (schools) (classrooms) (with) (via) (BoxTops)
Proud Box Top Partners for (X) (X+) years
(Proud) (Exclusive) (Partner) (of) (with) (BoxTops) (BTFE) (for) Education
Scan your receipt
School Supply Pack ⁽¹⁾
See how at BTFE.com
See (top) (back) (and / or) (sticker) for (details) (and / or) (rules) (and / or) (instructions)
See details or rules or instructions [on] [back or sticker]
Support Teachers with Lysol and Box Tops for Education
Supporting Teachers (with every purchase) (with every canister purchased)
Supporting (teachers) (schools) (classrooms) (for (X) (X+) years)
Thank you Teachers!
Thank you for being an amazing teacher
Your teacher(s) love(s) Lysol®
You could win the (x) (golden) Box Tops
Worth (x) eBoxTops™

NO PURCHASE NECESSARY. MANY WILL ENTER AND PLAY, FEW WILL WIN. A PURCHASE WILL NOT INCREASE YOUR CHANCES OF WINNING. OPEN ONLY TO LEGAL RESIDENTS OF THE FIFTY (50) UNITED STATES and D.C. WHO ARE 18 YEARS AND OLDER AT THE TIME OF ENTRY WHO ARE MEMBERS OF BOXTOPS4EDUCATION.COM AND HAVE DESIGNATED A SCHOOL TO SUPPORT AT TIME OF ENTRY. MEMBERSHIP TO BOXTOPS4EDUCATION.COM IS FREE AND AVAILABLE AT WWW.BOXTOPS4EDUCATION.COM. VOID WHERE PROHIBITED. Instant Win Game starts (x/xx/xx) at xx:xx(am)(pm) ET and ends x/xx/xx at xx:xx(am)(pm)ET. For Official Rules, alternate method of entry, prize descriptions and odds disclosure, visit (enter URL here) Sponsor: (General Mills Sales, Inc., One General Mills Blvd, Minneapolis, MN 55440.) (Reckitt Benckiser, Parsippany, NJ 07054-0224)

(Buy) (X) (win) (a) (get) (X) (free) (trip) (prize) (donation) (box) (tops) (donate) (Kinsa®) (KinsaTM) (smart) (digital) (thermometer) (Apply) (Now) (to) (win) (get) (a) (free) (kinsa®) (Kinsa) (KinsaTM) (smart) (digital) (thermometer(s) (for) (your) (school) (family) (X) (devices) (available) (to) (schools) (help) (stop) (the) (spread) (of) (germs) (**) (illnesses) (at) (yours) (your) (school) (community)
(Get) (Free) (thermometers) (for) (the) (families) (at) (your) (school)
(Our) (FLUency) (program) (applicants) (will) (get) (special) (access) (to) (Kinsa) (insights) (to) (see) (what) (illnesses) (are) (going) (around) (the) (community) (school)
(One) (X) (Free) (Lysol®) (disinfectant(s)) (Lysol) (+) (&) (Kinsa)
(Buy) (X) (for) (home) (and) (X) (For) (School) (Class) (classroom) (teacher)
(Your) (Proud) (partner) (support(er)) (of) (with) (Kinsa®) (Kinsa) (KinsaTM) (smart) (digital) (quickcare) (thermometer) (thermometers)
(sponsor) (in) (partnership) (with) (Lysol®)
donating) (X) (of) (thermometers) (to) (local) (schools) (communities) (classrooms) (and / &) (families)

NOTE: Bracketed information is denoted as: << directive >>, { insert as noted }, (optional text), [required qualifier].
The text "hard, non-porous surface(s)" will be disclosed in the use direction or in the claims.
The term "this product" used throughout this document may be replaced with the marketed product brand name.
To use the term "germ" the product must be efficacious against 2 of the 3 major classes of organisms.
The product label must identify the specific bacteria, virus, fungus & mold.
The term (x) is a placeholder that represents a number between 1 and 99.
The term "Y" is a place holder for a character A – Z.

T-BONE

EPA Reg. No.: 777-139

Amendment: April 13, 2021

Page 9 of 35

(Brought) (to) (you) (by) (Lysol®) (and / &) (Kinsa®)(Kinsa(TM)) (FLUency) (program)

(Free)(for)(your)(class)(classroom)(school)

(X)(%)(free)(for)(school)(class)(college)

<< SEASONAL PACKAGE CLAIMS >>

(An) Essential flu season item

Allergen (Control) (Value) (Bonus) Pack (Item) {insert allergen soils – See Appendix 2}

Allergy (Season) (Value) Pack

Be prepared for (cold) (&) flu season

Cold (and) (&) Flu (Value) Pack

Get (Be) ready for (Cold &) Flu Season

Good for (the) (Cold &) Flu Season

<< MONEY BACK GUARANTEE CLAIMS >>

See the difference in cleaning tough soils or it's free. For purchases made between {insert date} and {insert date}.

Refund offer valid is U.S. only and must be postmarked by {insert date}. Limit one refund per person or household.

Void where prohibited. Visit {insert website} for full details.

Experience the (cleaning) difference (in) (of) (Dual Action) ({this product}) (for yourself) (or it's free) (or your money back) (guaranteed).

Money back guarantee

Satisfaction guaranteed (or it's free)

See the (cleaning) difference (in) (Lysol® Dual Action) ({this product}) (or it's Free)

Switch and see the (cleaning) difference (challenge) (or your money back) (satisfaction) (guaranteed) (or it's free)

Take the (Dual Action) ({this product}) challenge (see the difference) (and experience the cleaning difference) (or it's free)

(You can) (see the difference in) ({this product}) (or it's free)

(You can) See the (cleaning) difference (or it's free)

<< WIPE CONSTRUCTION / SIZE CLAIMS >>

(x) (times) (bigger) (larger) (than) (a) (your) (our) (regular wipe) (regular cloth) (the size)

(X)(x) % (larger)(more) (scrubbing) (power) (durable)(stronger)(thicker)(wetter) (wipe) (cloth) ⁽²⁾ ⁽⁸⁾

2-in-1 (Wipe) (Wet) (Mopping) (Cloth)

2 Sides (1 for Scrubbing, 1 for Wiping) (Mopping)

2 Sides (1 to (Mop) (Scrub), 1 to (Wipe) (Mop) (Scrub))

2 Sides: one traps and locks, one (wipes) (mops)

2 Sides: (scrubbing and wiping) (mopping and scrubbing)

2 Sides: one for daily touch-ups; one for tougher messes

2 Sides: one for everyday touch-ups; one for tougher messes

2 Sides: one for quick cleans; one for sticky messes

2 Sides: one for quick touch-ups; one for sticky messes

2 Sides: one for wiping; one for scrubbing

(2 sides) (one for) (touch-up) (scrubbing) (side) (daily touch-ups) (tougher messes) (mopping)

(100%) (Fully) (Completely) plant-derived (wipe) (fibers) (material) (cloth)

A Lysol® product using (VEOCEL™) (TENCEL™) fibers

(Absorbent) (Wipes) (Wipe) (Cloth) (Material)

Cloth-Like

Cloth made from 100% (plant-based) (plant-derived) fibers

To trap and lift more⁽²⁾⁽⁸⁾ mess(es)

Extra (X-tra) (X-Large) (Large) (Super) (Size) (Wide) (Long) (Disinfecting) (Dual Action) (XL) (Super) (Jumbo) (Mega) (Giant)

(Ultra) (Premium) (Platinum) (Wipes) (Wet) (Cloths)

A whole new kind of (wipe) (wet) (mopping) (cloth)

All that you expect from your current (wipe) (wet) (mopping) (cloth), plus now you can trap and lock (more) messes

(Durable) (and) (super) (absorbent)

Each pre-moistened disposable wipe has a (scrubbing) (abrasive) side for (tough stains) (tough jobs) (like) soap scum

NOTE: Bracketed information is denoted as: << directive >>, { insert as noted }, (optional text), [required qualifier].

The text "hard, non-porous surface(s)" will be disclosed in the use direction or in the claims.

The term "this product" used throughout this document may be replaced with the marketed product brand name.

To use the term "germ" the product must be efficacious against 2 of the 3 major classes of organisms.

The product label must identify the specific bacteria, virus, fungus & mold.

The term (x) is a placeholder that represents a number between 1 and 99.

The term "Y" is a place holder for a character A – Z.

T-BONE

EPA Reg. No.: 777-139

Amendment: April 13, 2021

Page 10 of 35

and grease and a softer side for wiping away everyday messes.
Extra large wipe for larger messes in your kitchen or bathroom
Feel the strength
Flexible (wipe) (material) (cloth)
(Great) (Designed) (Built) for tough (messes) (cleaning)
(Great) (Designed) (Built) (Tough) (Textured Design) for your toughest messes
{Insert pattern / texture – See Appendix 2} cleans (picks up) (traps) (locks) {insert soils / allergens – See Appendix 2}
Interlocking weave that (traps) (and) (locks) (more) messes. Just wipe and throw away. (It's that easy.)
Microlock Fibers (fiber) (weave) (grooves) (pattern)
Non-abrasive
(One) (for daily touch-up) (&) (and) (One) (for tougher messes)
One (patterned) (textured) side of the wipe traps (and) (&) locks (challenging) (more) (messes including) (dirt) (dust)
(crumbs) (and) (even) (hair) (for) (even) (more) (cleaning power)
One side traps and locks (more) (messes), the other side wipes surfaces clean
Perfect Size for (Kitchens) (and) (Bathrooms) (and) (Bedrooms)
Plastic Free Wipe (made from 100% (plant-based) (plant-derived) fibers)
Same Lysol Wipes (that you love), (now) (bigger) (larger) for (more) ⁽²⁾⁽⁸⁾ (cleaning) bigger) (larger) (tougher) (jobs) (messes)
Scrub(s) (like a sponge) (without scratching)
Scrubbing
(Scrubbing) (fibers) (side) for tough messes
Soft (yet) (&) strong (wipe) (wipes) (wipe material) (cloth)
(Strong) (durable) (thick) (large) (larger) (tough) (wipe) (wet) (mopping) (cloth) (for) (excellent) (effective) (cleaning)
(performance)
Strong (enough) (so) (you can) (clean your) (entire) (kitchen) (bathroom) (pick up more messes) (use it on more surfaces) with less
wipes
Strong (wipes) (cloths) are made from a new interlocking weave that trap(s) and lock(s) (residue) (including (dirt)
(dust) (crumbs) (and) (even) (hair)) (eliminating the frustration of pushing dirt around)
Tackle (large) (big) (tough) (cleaning) (jobs) (messes) with just 1 wipe
Textured wipe
The other side for wiping your surfaces clean
The strong wipe has a revolutionary dual texture
Thick wipe for touch-up cleaning
(Thick) (and) (Durable)
Thick(er) (and) (Strong(er)) Wipe⁽²⁾⁽⁸⁾ ((versus) (Vs).current Lysol® Brand (II) (x) Disinfecting Wipes)
This product contains LENZING™ (Lyocell) (Viscose) fibers.
Tough (wipe) (cloth) (for tough cleaning) (for your tough jobs)
Tough on messes, gentle on (surfaces) ({insert surface from Appendix 2})
Two-in-One (Wipe) (Cloth)
(Virtually) Lint Free Wiping
(Wipes) made from (100%) (plant-derived) (plant-based) fibers
(Wipes) made with (X%) (Veocel) (&) (X%) (Tencel) (&) (X%) (Lyocell) (&) (X%) (Viscose)
(With) (interlocking) ({insert pattern / texture – See Appendix 2}) (pattern) (for) (cleaning) (performance) (power)
(With) (interlocking) ({insert pattern / texture – See Appendix 2}) (pattern) (that traps and locks more messes)
With Micro-Lock fibers

<MARKETING CLAIMS FOR BIODEGRADABLE SUBSTRATE>> - [Note: only for the viscose substrate for Alternate CSFs]

95% Bio-based content

(100%) (Fully) (Completely) plant-derived (wipe) (fibers) (material) (cloth)

A Lysol® product using (VEOCEL™) (TENCEL™) fibers

(Biodegradable) cloth made from 100% (plant-based) (plant-derived) fibers

(Contains) biodegradable (and) (plant-based) (plant-derived) (ingredients) [€], [£]

(Contains) (biodegradable) (ingredients) [€] (made) (with) (from) (biobased) (plant-based) (ingredients) (materials) (content) (€)

(Contains) (with) plant-based ingredients

(Biodegrades) (degrades) within (X) weeks (after disposal) [£]

NOTE: Bracketed information is denoted as: << directive >>, { insert as noted }, (optional text), [required qualifier].

The text "hard, non-porous surface(s)" will be disclosed in the use direction or in the claims.

The term "this product" used throughout this document may be replaced with the marketed product brand name.

To use the term "germ" the product must be efficacious against 2 of the 3 major classes of organisms.

The product label must identify the specific bacteria, virus, fungus & mold.

The term (x) is a placeholder that represents a number between 1 and 99.

The term "Y" is a place holder for a character A – Z.

T-BONE

EPA Reg. No.: 777-139

Amendment: April 13, 2021

Page 11 of 35

(Degrades) (Biodegrades) (Disintegrates) (faster than) (quicker than) (peanut shells) (corn cobs) (tree branches) [£]

(Free from) (no) plastic wipe (material) (cloth)

(Fully) (Completely) (Biodegradable) (Disinfecting) (Wipes) (Wipe) (Material) (Cloth) (Fibers)[£]

Plastic Free Wipe (made from 100% plant-based fibers)

This product contains LENZINGTM (Lyocell) (Viscose) fibers.

(Wipes) made from (100%) (plant-derived) (plant-based) fibers

(Wipes) made from (fully) (completely) (biodegradable) (plant-based) fibers[£]

(Wipes) made with (X%) (Veocel) (&) (X%) (Tencel) (&) (X%) (Lyocell) (&) (X%) (Viscose)

(Wipes) made (with) (from) biobased (ingredients) (materials) (content)

<< MARKETING / FORMULATION CLAIMS >>

(Complete Clean) (Disposable) (Easy to use) (Effective) (Everyday cleaner) (Everyday use) (Great) (Household) (Lysol® Brand)

(Pleasant fragrance) (Ready to use) (Revolutionary) (Strong) (Touch-Ups) (Versatile) (Wipe) (Wipes) (Wiping)

(Easy to use) (Everyday) (General Purpose) (Multi-Surface) (Multi Use) (Wipes) (Cloths)

(Advanced Cleaning) (Clean) (Cleaner) (Cleaning) (Deodorizes) (Disinfect) (Disinfects) (Disinfectant) (Disinfecting) (Sanitize)

(Sanitizer) (Sanitizes) (Sanitizing) (Wet) (Cloth) (Cloths) (Wipe) (Wipes)

(Antibacterial) (Antibacterial Action) (Bactericidal*) (Bactericide*) (Deodorizer) (Deodorizes) (Disinfectant) (Disinfects**)

(Germicidal**) (Sanitizes) (Sanitizer) (Virucidal†) (Virucide†)

(A) (Brighter Outlook) (Fresh Start) (Be) (Happy) (Asana) (Bliss) (Brand New Day) (Bright)(Brighter) (Horizon) (Outlook) (Carnival) (Celebrations) (Feel(ing)) (Positive) (Festival) (Forever) (Free) (Spirit) (Fresh) (Clean) (Scent(s)) (Fiesta) (New) (Beginnings) (Start) (Better) (Hello) (Future) (Tomorrow) (Holiday) (Home) (Sense(s)) (Inspiration(s))(Inspire) (Joy) (Essence) (Kaleido) (Leap Forward) (LifeScent(s)) (Make it Happen) (Mod(Abode)(Home)) (Mosaic) (Ozoo) (Prisma) (Renewal) (Revive) (Samba) (Santosha) (Sunny) (&) (Bright) (TrueColor) (VibraScent(s)) (VivaScent(s)) (Welcome) (Adventure) (Awaits) (Cool) (Reflections) (Energy) (Magic) (Perspectives) (Good) (Feelings) (Jump) (Start)

X benefits, 1 wipe

0% Bleach

(2-in-1) (X-in-1) (Dual action)(Dual use) disinfectant and cleaner

95% Bio-based content

A clean you can smell

(A) Shining clean you can (see) (trust)

(Also) Try (These) (Our) (Other) Lysol (Products) (Wipes)

American Fragrance Collection / American Collection

American (Edition)

An efficient way to clean

Anytime (to go)

Best on grease (removal)

(Birthday) (Retro) (Limited) (Special) (Classic) (Gold) (Edition)

Bleach free

(Fresh) burst of fragrance (and) (that's) (long) (lasting) (freshness)

Clean and disinfect on the go

Clear dry formula

Clear drying formula (for Multiple Surfaces)

Contain(s) (no abrasives)

Contains no (Cl) (Chlorine) bleach

Contains (powerful) (effective) (fast) grease cutters

(Contains) (with) (plant-based) (plant-derived) (citric acid) (ingredients)

Deep Down Clean!

Delivers a Complete Clean

Disinfection control (formula)

Disinfects (hard non-porous) surfaces

NOTE: Bracketed information is denoted as: << directive >>, { insert as noted }, (optional text), [required qualifier].

The text "hard, non-porous surface(s)" will be disclosed in the use direction or in the claims.

The term "this product" used throughout this document may be replaced with the marketed product brand name.

To use the term "germ" the product must be efficacious against 2 of the 3 major classes of organisms.

The product label must identify the specific bacteria, virus, fungus & mold.

The term (x) is a placeholder that represents a number between 1 and 99.

The term "Y" is a place holder for a character A – Z.

T-BONE

EPA Reg. No.: 777-139

Amendment: April 13, 2021

Page 12 of 35

Does not (include) (contain) (insert components – See Appendix 4)
(Does not) (will not) (no) (scratch(ing)) (your surfaces)
(Doesn't) (does not) (create) (leaves) (no) (strong) (harsh) (chemical) (residue) (fumes)
Dry clear (formula)
Dye Free (formula) (wipe) (product)
Effective on multiple hard, non-porous surfaces
(Effective) cleaning (and) (&) (disinfecting) (sanitizing) has never been (easy) (easier) (or) (more convenient)
Eliminates the need to push (the) dirt around
Xpress (quick dry) (dry action)^(***)
EZ Clear (technology) (formula)
EZ Dry (technology) (formula)
EZ Shine (technology) (formula)
Fast drying formula
(Feel) (See) the difference with (our) (new) (insert texture from Appendix 2) (formula)
Fit(s) (in your) (an existing) (a) Lysol Wipes (canister) (Container)
For deep (cleaning) (scrubbing) (plus surface cleaning)
(For) (deep) scrubbing
For a (cleaner)(fresher) (home)(house)
For the holidays
For when a regular (wipe) (cloth) (just) can't get the job done
Free From (insert components – See Appendix 4)
Free from (Cl) (Chlorine) bleach
(Fresh) (Clean) Scent (!)
Fresh fragrance
From the makers of Lysol Disinfectant Spray
(Gentle Cleaning) Formula (powers through) (eliminates) (cleans) (soap scum) (limescale) (grime) (bathroom soil) (insert soil - Appendix2)
Gives (a) (deep) (deeper) (clean) (than a mop)
(Guaranteed) (Lysol) freshness
Heavy (light) duty (jobs)
(Help(s)) (to) make your room Lysol® clean
Helps you finish cleaning (fast) (quickly)
Keep it handy in your (purse) (diaper bag) (gym bag) (glove compartment) (car)
Leaves (a) (long lasting) (Lemon) (Fresh Waterfall) (Citrus) (Floral) (Herbal) (Green Apple) (fresh) (clean) (scent)
Leaves less streaks than before
Leaves (virtually) (no residue) (a streak free shine) (a clean surface) (behind)
Leaves your (insert surfaces / sites – See Appendix 2 and clean
Light scent
Lightly scented
Lighter scent²
Look out for our (decorative) (beautiful) (Designer Series) packaging -or- canisters
(Low Streak) (Lower Streak) (Streak free) (No streak) (Formula)
Low Residue (formula)
(Lysol) Pet Solutions (Disinfectant)(Disinfecting) (Wipe) (for Pet Messes)
(Made)(Assembled)(Produced) (in) (America)(U.S.A) (the) (US)
(Made) (in) (America)(US)(USA) (with) (globally sourced) (international) (ingredients)(materials)
Made with (X%) (Xx) (X times) less plastic⁸
Made without (insert components – See Appendix 4)
Makes cleaning easier
(Moisture) (Freshness) guaranteed
(More) effective at cleaning your challenging everyday messes ⁽²⁾⁽⁸⁾
(Multi action)(Multi purpose) disinfectant and cleaner^{**}
(No bottles) (no sponges) (no mess) (No bucket) (necessary)
No (insert components – See Appendix 4)
(No) (free from) harsh chemical residue (when used as directed)⁽⁴⁾

NOTE: Bracketed information is denoted as: << directive >>, { insert as noted }, (optional text), [required qualifier].
The text "hard, non-porous surface(s)" will be disclosed in the use direction or in the claims.
The term "this product" used throughout this document may be replaced with the marketed product brand name.
To use the term "germ" the product must be efficacious against 2 of the 3 major classes of organisms.
The product label must identify the specific bacteria, virus, fungus & mold.
The term (x) is a placeholder that represents a number between 1 and 99.
The term "Y" is a placeholder for a character A – Z.

T-BONE

EPA Reg. No.: 777-139

Amendment: April 13, 2021

Page 13 of 35

(No more) (eliminates) (pushing) (scooping) dirt around

No more (pushing) (scooping) {insert soils – See Appendix 2} (around)!

No rinsing required (after cleaning)⁴

Non-abrasive formula

One-Step Disinfectant & Cleaner⁴

One wipe, many surfaces⁴

One (canister) (wipe) has more cleaning power than X ((rolls of) paper towel(s)) (wipes(s))

(Our most) (absorbent) (wipe) (ever) (vs Lysol wipes) ⁽⁸⁾

Perfect for your (purse) (diaper bag) (gym bag) (glove compartment) (car)

Phosphate free

(Quick) (Fast) (effective) cleaning

Refill (tub) (pack) uses (X%) (X times) (Xx) less plastic⁸

Reformulated with Citric Acid²

Reinforced with {insert texture from Appendix 2} (strength)

(Same great) (strength) (cleaning) (vs previous Lysol wipes)⁽⁸⁾

Soft yet strong to deliver superior cleaning⁽²⁾⁽⁸⁾ of everyday dirt & messes

Strength⁶ you can (trust) (depend) (rely) (up)on (!)

Tackles (tough) (stubborn) cleaning (jobs) (touch-ups)

Tackles cleaning touch-ups even easier (vs previous Lysol wipes) ⁽²⁾⁽⁸⁾

(This product) is (also) great on the “go” (in {insert sites – See Appendix 2})

(Triple action) disinfectant, sanitizer and cleaner

(Virtually) streak free (formula) (!)

(Visible) clean

(Wipes) made (with) (from) biobased (ingredients) (materials) (content)

(With) Plant (based) (derived) (active) (citric acid) (cleaning) (ingredient(s))

Works on (large) (small) spills

(Xpress) (rapid) (handy) (quick) (fast) (dry) (drying) (action)

You can see messes sticking to the wipes (– even) (dust) (dirt) (hair) (and) (crumbs)

<< MARKETING CLAIMS – COMMERCIAL / INSTITUTIONAL / INDUSTRIAL >>

Pro ((For) Commercial Use)

Use (this product) as a(n) (easy) (and) (convenient) way to clean (and) disinfect (sanitize) (hard non-porous surfaces) your (household) (facility) (kitchen) (bathroom) (bedroom) surfaces

<< USAGE CLAIMS >>

Also (for) use on (quick clean) floor mops

(Also) Great for (convenience) (floor) (floors) (mops) (mopping) (sweepers)

Appropriate for use on {insert surfaces – See Appendix 2}

Can be used (on) (for) {insert sites / surfaces – See Appendix 2}

Can be used with (Lysol®) (Clean-Flip™ Sweeper) (Mop) (Gadgets)

Can be used with Swiffer® Sweeper†††

Captures (more) ⁽²⁾⁽⁸⁾ (messes) (grime) (dirt) (germs**) ({insert soil from Appendix 2})

Compatible with {insert surfaces – See Appendix 2}

(Daily)(Everyday) (Cleaner)(Disinfectant)(Disinfecting) (Wipe)

Designed for {insert surfaces – See Appendix 2}

Disinfects and easily cleans (your) (house) (home)**

Disinfection and (effortless) (with one hand) cleaning**

Easy on surfaces

Effective (disinfecting) (sanitizing) for use in {insert sites – See Appendix 2}

(Effectively) works on (many) (most) (a wide range of) (household) (kitchen) (bathroom) hard non-porous surfaces

(Fits) (Suitable) (Designed) (on) (for) (most) (all) (floor) (convenience) (sweeper(s)) mops

Fits on (Lysol®) Clean-Flip™ Sweeper (or regular sweeper tools)

For (daily)(everyday) (use)(usage) (touch up(s)) (cleaning)(disinfecting)(sanitizing) (all) (around) (in) (the) (home)(house)

(For) general (cleaning) (and) (disinfecting) (sanitizing) (hard non-porous) (non-food contact) surfaces

(For) use in (your) (the) (Kitchen,) (and) (Bathrooms) (and) (Bedrooms) (babies) (baby's) (room)

NOTE: Bracketed information is denoted as: << directive >>, { insert as noted }, (optional text), [required qualifier].

The text “hard, non-porous surface(s)” will be disclosed in the use direction or in the claims.

The term “this product” used throughout this document may be replaced with the marketed product brand name.

To use the term “germ” the product must be efficacious against 2 of the 3 major classes of organisms.

The product label must identify the specific bacteria, virus, fungus & mold.

The term (x) is a placeholder that represents a number between 1 and 99.

The term “Y” is a place holder for a character A – Z.

T-BONE

EPA Reg. No.: 777-139

Amendment: April 13, 2021

Page 14 of 35

(For) (deep) (scrub(s)(ing)) (and) (surface clean(s)(ing))

For your tough(est) messes

For single use

Gentle (for use) (on) {insert sites / surfaces – See Appendix 2}

(Great) (excellent) (for) (quick clean ups) (touch up cleaning)

Great (for) (closets) (and) (around) (cleaning) (inside) (closet shelving) { insert soils / sites / surfaces – See Appendix 2}

Great for (cleaning around the toilet) (dissolving (tough) spots) (revealing the natural shine of your floors) (use in cars)

Great (for) on the go (!)

(Great for) (the top of the fridge) (tidying up pet areas) (tidying up pet messes) (touch-up(s) (cleaning) (cleaning ceiling fan blades)

Great (for) (use) (in) (on) (your) (under) (kitchen) (bathroom) (bedroom) (living room) (electronics) (and) (throughout) (all over)

(the) (house⁴) {insert surfaces – See Appendix 2}

Great for (use) (in) (your) (dorm room) (class room(s)) (office) (gym) (school) (!)

(Great) (suitable) (to) (for) (use) (all) (around) (over) (the) (house) (home) (when used as directed)⁽⁴⁾

Handles daily clean-ups with no need for additional sprays, sponges or buckets

Hospital Type (Disinfectant) (Disinfection)**

Kind (for use) (on) {insert sites / surfaces – See Appendix 2}

Large strong (wipe) (wet) (mopping) (cloth), (can be used on floors) (and all over the house⁴)

Maximum Cleaning Minimum Effort

Mild (for use) (on) {insert sites / surfaces – See Appendix 2}

On the go (wipe) (pack) (sachet)

Perfect for use on {insert surfaces – See Appendix 2}

Perfect (suitable) (great) for everyday (touch ups) (daily) (use) (cleaning) (all) (around) (the) (house) (home) ⁽⁴⁾

Safe (to) (for) use on (the following surface material(s):) {Insert surface materials from Section titled “Surface Types: (~ Non-Medical or Fixture)” on Appendix 2}

Single (use) (package) (packet) (sachet)

Suitable for use (on) (around) (pet(s)) (dog) (cat) (areas) (spaces)

Suitable for use on (virtually) (most) (all) (finished floors) (sealed) (surfaces)_{insert sites / surfaces – See Appendix 2}

(Suitable) (ideal) (made) (perfect) (great) (for) (use) (in) {insert sites – See Appendix 2}

(Suitable) (to give you the freedom) (to) (for) use (the product) (everyday) (and) (all) (around the house⁴)

The (easy) (and) convenient way to clean (and) (&) (disinfect) (and) (sanitize) hard non-porous surfaces (anywhere you) (travel)

The (convenient) (and) easy way to clean (and) (disinfect) (sanitize) (the following hard, non-porous) (non-food contact surfaces) (anywhere you travel): {insert sites / surfaces – See Appendix 2}

(This product) (cleans and) (disinfects) (sanitizes) the following surfaces {insert surfaces – See Appendix 2}

(This product) (is) (are) the (easy) (and) (convenient) way to clean (and) disinfect (sanitize) (hard non-porous surfaces)

your (household) (kitchen) (bathroom) (bedroom) (floor) surfaces

Try (me) (now) (on) (glass) (sealed) (wood) (granite) (stainless steel) ({insert soils / sites / surfaces – See Appendix 2}) (surfaces)

Try on (convenience) (sweeper) mops (for) (as) (a) floor(s) cleaner

Try on (Lysol®) Clean-Flip™ (or regular sweeper tools)

{Fits} (on) (Try on) (Suitable) (Designed) (for) (most) Swiffer® Sweeper^{††}

Use (this product) (on) (for) (hard, non-porous) (surfaces) (where) ({insert allergens / soils / sites / surfaces – See Appendix 2}) (may be a concern)

Use (scrubbing) (scrubby) (side) (to) (remove) (tough) (stubborn) (dried-on) (spots) (stains) (and) (foods)

Use (this product) as a(n) (easy) (and) (convenient) way to clean (and) disinfect (sanitize) (hard non-porous surfaces)

your (household) (facility) (kitchen) (bathroom) (bedroom) surfaces

Use to disinfect (kitchen) (surfaces) (before) (after) (cooking) (preparing) (meals) (dinner)

Use with (Lysol®) Clean-Flip™ Sweeper or regular sweeper tools

Use where you live, work and play

Wipe(s) (up), (and) trap(s) (and lock(s)) (more) ⁽²⁾⁽⁸⁾ (messes) (grime) (dirt) ({insert soil from Appendix 2})

<< Non-Living ALLERGEN CLAIMS (based on cleaning performance) >>

Allergen control^{††}

Controls allergens^{††}

Controls common household allergens^{††}

NOTE: Bracketed information is denoted as: << directive >>, { insert as noted }, (optional text), [required qualifier].

The text “hard, non-porous surface(s)” will be disclosed in the use direction or in the claims.

The term “this product” used throughout this document may be replaced with the marketed product brand name.

To use the term “germ” the product must be efficacious against 2 of the 3 major classes of organisms.

The product label must identify the specific bacteria, virus, fungus & mold.

The term (x) is a placeholder that represents a number between 1 and 99.

The term “Y” is a place holder for a character A – Z.

Removes {insert allergens – See Appendix 1}
Removes {insert allergens – See Appendix 1} at the source
Removes allergens (on surfaces) with Lysol® {insert allergens – See Appendix 1}
Removes (more than) 95% of allergens {insert allergens – See Appendix 1}
Removes up to 90% of {insert allergens – See Appendix 1}
Take control over allergens (in your home) with Lysol® {insert allergen – See Appendix 1}
(This product) (Even) (Removes), (Traps), (Locks in), (Captures), (Picks Up) (up to) (90%) (of) (the following) (common household) allergens^(††): {insert allergens – See Appendix 1} (found in) (associated with) (debris) (dirt) (dust) (lint) (on) (hard, non-porous) (surfaces).
(This product) (Quickly) (Removes) (Traps) (Locks in) (Captures) (Picks up) (debris) (dust) (dirt) (lint) (that) (may) (contain(s)) (harbor(s)) (the following) (common household) allergen(s) ^(††): {insert allergens – See Appendix 1} (on) (from) (hard, non-porous) (surfaces).
(This product) removes (90% of) the following allergens: dust mite debris, pet dander and pollen particles (from) (timothy grass) (non-porous hard surfaces).
(This product) removes the following allergens: {insert allergens – See Appendix 1} (from surfaces)

<< CLEANING / DEODORIZING CLAIMS >>

((2)(3)(4)(5)(X)) (the) (everyday) (Cleaning Power²) (: (Thicker), (Stronger) (Longer lasting) (More cleaning solution) (Scrubby texture)
(2) (3) (4) (5) (X) cleaning power (This product) has the cleaning power to remove {insert soils – See Appendix 2}
(2) (3) (4) (5) (X) layered wipe for extra (strength) (cleaning) power
(2) (3) (4) (5) (X) (the) (clean) (cleaning) (strength)
(2) (3) (4) (5) (X) 3X Cleaning Power vs. (Lysol® All Purpose Cleaner with Bleach) ({777-83 Product Name})
(24 hour) (24 h) (24 hr) (48 hour) (48 h) (48 hr) bacteriostatic barrier[§]
(24 hour) (24 h) (24 hr) (48 hour) (48 h) (48 hr) Bacteria Prevention (for (24) (48) hours)[§]
3X (Continuous Clean) (Dirt Blaster) (Stain Blaster) (Stain Lifter)
4X (the) Cleaning Power on grease, baked on cheese, baked on greasy soil (and) (&) soap scum
(X) actions in one swipe (wipe): (Sanitize), (Disinfect), (Clean), ((Remove) (Break down) (more)⁽²⁾⁽⁸⁾ (messes) (grime) (dirt) (germs**) ({insert soil})⁴
(10) (Z) X CLEANING ACTIONS[™] <<where Z is a number between 1 and 10. For example 10X CLEANING ACTIONS[™]>>
(X) times (x) more coverage than (regular) (current) (Lysol® Brand II Disinfecting Wipes) ({insert Lysol® brand name})
X (extra) (feet) (more) (days) (of cleaning)⁽²⁾⁽⁸⁾
(X) x more cleaning with (X)x more wipes⁽²⁾⁽⁸⁾
(x%) More (Surface) (Absorption) (Cleaning) (and) (Disinfection)⁽²⁾⁽⁸⁾⁽⁵⁾
(x%) (Stronger)(Thicker) Wipe
(0%) (Free from) (No) Bleach[^]
(A(n)) (Even) (Better²) (Great) (Easy) (Everyday) Cleaner
Active Lift Technology to (trap) (lock) (&) (and) lift more⁽²⁾⁽⁸⁾ mess(es) (!)
(Active) Lift Cleaning (Technology)⁽²⁾⁽⁸⁾
Better Grease Cutting⁽²⁾⁽⁸⁾
Breaks apart tough and dried up messes
Cleans more surfaces (with just one wipe)⁽²⁾⁽⁸⁾⁽⁵⁾
Cleans (deodorizes) (disinfects) (eliminates odors)
Clean (even) more -or- multiple surfaces⁽²⁾⁽⁸⁾ with (this)(wipe(s)) (product)
Clean more, use less (!)⁽²⁾⁽⁸⁾⁽⁵⁾
Cleans (X) (%) (times) (Better) (faster)(More) (dirt)(grime)(food)(baked on)(grease)(Stains)(Surfaces) (better) ({insert soil})⁽²⁾⁽⁸⁾⁽⁵⁾
(Cleans) (dissolves) (soap scum) (and) (baked on grease)
Cleans (even) (bigger) (tougher) (more) (stubborn) (everyday) messes⁽²⁾⁽⁸⁾
(Cleans) (removes) (tough) (grimy) (bathroom) (kitchen) (floor) messes (with little effort) (with little muscle power) (within seconds) (within minutes)
Cleans the same space in much less time than (a) (your) regular (wipe) (cloth)
Cleans to a (sparkling) (shine)
Clean(s) with the power of Lysol® Brand Products
Controls the growth of odor causing bacteria (for (24) (48) hours)[§]
Cuts cleaning time

NOTE: Bracketed information is denoted as: << directive >>, { insert as noted }, (optional text), [required qualifier].
The text “hard, non-porous surface(s)” will be disclosed in the use direction or in the claims.
The term “this product” used throughout this document may be replaced with the marketed product brand name.
To use the term “germ” the product must be efficacious against 2 of the 3 major classes of organisms.
The product label must identify the specific bacteria, virus, fungus & mold.
The term (x) is a placeholder that represents a number between 1 and 99.
The term “Y” is a place holder for a character A – Z.

Cuts {insert soils – See Appendix 2}
 Cuts Grease(.) (and / &) (Lifts Messes) (grime)
 (Designed)(Great) for eliminating (odors)(odor-causing bacteria) (at the source)
 (Deodorizes)(Neutralizes) by (removing) (odors)(odor-causing bacteria) (at the source)
 Deodorizes (and sanitizes^{***}) as it cleans
 Dissolves {insert soils – See Appendix 2}
 Dotted pattern (to) (Trap) (and) (Lift) (Lock) (More)⁽²⁾⁽⁸⁾
 Each (textured) (quilted) wipe (cleans as much as) (lasts longer than) (X) (regular) (Original) Lysol Disinfecting Wipes
 (Easily) Lifts away dirt, dust and debris (from {insert surface from Appendix 2})
 Effectively cleans everyday messes
 (Effectively) (efficiently) clean(s) (&) (and) disinfect(s)(ing) (germy) messes like (poop) (feces) (urine) (pee) (and) (vomit) (saliva)
 (pet) (dog) (cat) (areas) (related)
 Eliminates (Removes) (Kitchen) (and) (bathroom) odors
 Everything (you need) is already in the wipe
 Fast Drying Formula
 (Formulated to) Dissolve(s) and pick(s) up tough messes
 Freshens {insert sites – See Appendix 2}
 (Gets up)(Removes) stuck-on messes
 (Heavy) (duty)(power) (stain) (remover)(destroyer) (tough) (non-bleach) (pro) (fighter)(eliminator)
 Helps clean (away) (tough stains) (like) {insert soils – See Appendix 2}
 (Helps) eliminate odor-causing bacteria
 {insert soils – See Appendix 2} disappear(s) (in a flash)
 Leaves (household) (bathroom) (restroom) surfaces sanitary
 (Lock) (&) (Trap) (and) (Lift) (Technology) (to) (trap) (&) (and) (lift) (more)⁽²⁾⁽⁸⁾ (mess(es)) (!)
 Longer Lasting Wipe²
 Max (Strength) (Thickness) (wipe)⁽⁸⁾⁽⁵⁾
 (Mops) (and) (Scrubs) (and) (Wipes)
 (New) ((X)x) (%) (times) (more) (better) (Improved) (Deeper) (Enhanced) (Stronger) (Tougher) (Thicker) (Advanced) (Defined)
 (absorbent) (Textured) (layered) (Dirt-lifting) (Dirt-catching) (Dirt-vacuuming) (Dirt-sealing) (Dirt-trapping) (Dirt-busting)
 (Mess-lifting) (Mess-catching) (Mess-vacuuming) (Mess-sealing) (Mess-trapping) (Mess-busting) (Vacuum-pockets)
 (pockets) (honeycomb) (texture) (pattern) (wipe(s)) (to) (scrub(s)) (.) (last(s)) (use(s)) (longer) (clean(s)) (cleaning) (to)
 (power(s) through) (pick(s) up) (capture(s)) (trap(s)) (lift(s)) (absorb(s)) ((X)x) (%) (time(s)) (x) (more) (weight) (mess(es))
 (dirt) (grease) (better) (faster) (as) (it(s)) (better) (to be as strong as) (than) (a) (cloth)⁽²⁾⁽⁵⁾⁽⁸⁾
 (New) (Unbeatable) (Superior) (Better) Dirt Lifting⁽²⁾⁽⁸⁾
 (New) (Unbeatable) (Superior) (Better) Grease Cutting⁽²⁾⁽⁸⁾
 No Bleach^ Harshness
 (Odor)(Malodor) (elimination)(control) technology
 (One) (1) wipe (can be) used to clean messes
 One swipe and {insert soil / allergens – See Appendix 2} (is) (are) gone!
 Our (Best) (Thickest) (Ever) Wipe⁽⁸⁾
 Our Best (Clean) (Ever) Wipe(!)⁽²⁾⁽⁸⁾
 Picks up (dirt) (dust) (crumbs) (and / &) (even) (hair)
 (Prevents) (controls) bacteria (24 hour) (24 h) (24 hr) (48 hour) (48 h) (48 hr) §
 (Prevents) (controls) bacterial growth for (24 hour) (24 h) (24 hr) (48 hour) (48 h) (48 hr) §
 Prevents the growth of odor causing bacteria (for (24) (48) hours) §
 Powerful (fast acting) (effective) (degreaser) (cleaner)
 (Powers through) (cleans) (traps) (messes) (soap scum) (soils) (stains)
 (Powers thru) (cuts thru) (hard) (stuck on) (sticky) (built up) ({insert soils – See Appendix 2})
 (Quilted) (Textured) (Pattern) (Wipe) (to) (Trap) (Lock) (and) (Lift) (Pick Up) (More)⁽²⁾⁽⁸⁾ (Dirt) (Messes) (Mess)
 (Reduces) (Less) scrubbing (needed)
 Removes (and cleans): {insert soils – See Appendix 2}
 Same great (cleaning)(strength) (vs. previous Lysol Disinfecting Wipes) (vs. {insert Lysol® brand name})⁽²⁾⁽⁸⁾
 Saves time
 Scrub(s) away {insert soil}
 Stronger cleaning Wipe⁽²⁾⁽⁵⁾⁽⁸⁾

NOTE: Bracketed information is denoted as: << directive >>, { insert as noted }, (optional text), [required qualifier].
 The text “hard, non-porous surface(s)” will be disclosed in the use direction or in the claims.
 The term “this product” used throughout this document may be replaced with the marketed product brand name.
 To use the term “germ” the product must be efficacious against 2 of the 3 major classes of organisms.
 The product label must identify the specific bacteria, virus, fungus & mold.
 The term (x) is a placeholder that represents a number between 1 and 99.
 The term “Y” is a place holder for a character A – Z.

Suitable to use on (Sealed Granite) (and) (Finished Wood) (and) (Stainless Steel)
Swipe(s) away {insert soils / allergens – See Appendix 2} (in seconds) (with no effort)
(The) Cleaning Power of Lysol (in a Wipe)
(This product) has 4X Cleaning Power to remove grease, baked on cheese, baked on greasy soil (and) (&) soap scum
This product has the cleaning power to remove {insert soils – See Appendix 2}
Time (saver) (saving)
Tough cleaning power (for your difficult) (for your most challenging) (stubborn) (messes) (jobs) (stains)
Tough on (grime) (kitchen) (messes)
Tough stains like scuff marks
(Traps) (and) (Dissolves) (your) (most) Challenging Messes
(Traps) (and) (Lifts) (more) ⁽²⁾⁽⁸⁾ (Dirt) (Dust) (and) (Hair)
Trap (and / &) (N) Locks fibres to pick up debris while powering through tough messes
Traps (and / &) (N) Locks (picks up) (cleans) (wipes off) (up to) ((X)x) (more) ⁽²⁾⁽⁸⁾ (Messes)(,) (particles of) (even) (dirt) (dust) (crumbs) (&) (hair) (fibers) (grime) (dirt) (residue) ({insert soils / allergens - Appendix 2})
(Unbeatable) (Grease) (Dirt) (Cutting) (Lifting) ⁽²⁾⁽⁸⁾
Versatile wipes clean multiple surfaces (like {insert surfaces from Appendix 2})
Wipe(s) away {insert soils / allergens – See Appendix 2} (in seconds) (with no effort)

<< FLOOR MOP CLAIMS – Specific to Sweeper type products >>

Fits leading sweeper products
Use with (Lysol®) (Clean-Flip™) Sweeper or regular sweeper tools
(Effectively) (disinfect(s)) (floors) (and) (pick(s)) (up dirt) (from) (off of) (floors)

<< STARTER KIT CLAIMS >>

Contents: (#) Sweeper (Floor Cleaner)
(#) Wet (Mopping) (Floor Cleaning) (Cloths) (Wipes)
(#) Dry (Sweeping) (Floor Cleaning) (Cloths) (Wipes)

Includes: (Brand/Sub-brand/Product Name) Mop, (2) Wet Mopping Cloths (wipes) and (2) Dry Mopping Cloths (wipes)

\$X in (Lysol®) refill coupons inside
Coupons inside
Assemble ((4)-piece mop)
(Attach (cloth to mopping head)) (Clean) (Toss)
(Brand/Sub-brand/Product Name) Dry (Mopping) (cloths) (wipes) refills (are available) (separately)
(Brand/Sub-brand/Product Name) Wet (Mopping) (cloths) (wipes) refills (are available) (separately)
Bucketless mopping system
Refills for (Brand/Sub-brand/Product Name) Wet (Mopping) (cloths) (wipes) and (Brand/Sub-brand/Product Name) Dry (Mopping) (cloths) (wipes) (are available) (separately)

2-in-1 Starter Kit
(Lysol®) (Sub-brand/Product Name) (Mopping) Kit
Starter (Mopping) Kit
Sweeping & Mopping Starter Kit

X% (more) (bigger) (surface) (cleaning) (power) (area) (than the leading sweeper product)
Can also be used with regular wet and dry sweeper refills
Cleans the floor and baseboard simultaneously
Dry (Mopping) Cloths (wipes) pick up dust, dirt and hair. (Deep ridges and grooves trap and lock it in.)
(Dry) (Wet) (Sweeping) (Mopping) Cloths
(Flaps) Flip(s) up (to clean) (corners) (and) (baseboards)
(Flaps) Flip(s) up to get into hard to reach areas
Flip mechanism for small spaces & baseboards

NOTE: Bracketed information is denoted as: << directive >>, { insert as noted }, (optional text), [required qualifier].
The text “hard, non-porous surface(s)” will be disclosed in the use direction or in the claims.
The term “this product” used throughout this document may be replaced with the marketed product brand name.
To use the term “germ” the product must be efficacious against 2 of the 3 major classes of organisms.
The product label must identify the specific bacteria, virus, fungus & mold.
The term (x) is a placeholder that represents a number between 1 and 99.
The term “Y” is a place holder for a character A – Z.

T-BONE

EPA Reg. No.: 777-139

Amendment: April 13, 2021

Page 18 of 35

For a complete clean, try Lysol® Wet and Dry Cloths

(For) (deep) corner and baseboard cleaning

(For) (quick) (easy) Assembly

For sweeping and (&) mopping

Gets into corners (and small spaces) easily

Lysol® Dry Cloths – Picks up dust, dirt & hair!

Lysol® Wet Cloths – Cleans as it disinfects⁴!

(No-touch) easy attachment of cloth (wipe) (to mop)

Push (activation) slide (in) (one) (direction) to (raise) (engage) flaps

Push (activation) slide (in) (other) (opposite) (direction) to (disengage) (lower) flaps

Use (the) (Brand/Sub-brand/Product Name) wet (mopping) cloths (wipes) to clean as directed

Use(s) 100% of the surface of the cloth (sheet) when used with (Clean-Flip™) (Brand Name) mop

Uses the whole cloth

Use(s) the whole surface of the cloth (or sheet) when used with (Clean-Flip™) (Brand Name) mop

Usage Instructions: (1) Attach (2) Clean (3) Toss

<<SANITIZATION CLAIMS – soft surfaces >> -

99.9% of bacteria[‡] killed (in) (4) (minutes)

An effective (soft surface sanitizer[‡] (for use (in) (on) {insert use/surface – See Appendix 2})

(And even) (kills) (eliminates) 99.9% of (insert organisms – See Appendix 1) (Staph) in 4 minutes[‡]

Great for use as a soft surface sanitizer[‡] (in) (on) ({insert use site/surface – See Appendix 2})

Kill(s) (99.9%) (of) (household) bacteria (in) (4) (minutes) [‡]

Kill(s) (Eliminates) 99.9% of bacteria[‡]

Kill(s) (Eliminates) 99.9% of bacteria on soft surfaces in (4) minutes[‡]

Sanitizes soft surfaces in (4) minutes [‡]

<< SANITIZATION CLAIMS – hard, non-porous surfaces >>

(10) (second) (Quick) (Fast) (acting) sanitization^{***}

(10) seconds is all it takes to kill 99.9% of bacteria^{***}

99.9% of bacteria^{***} killed (in) (10) (seconds) (quick)

An effective (fast acting) (quick) non-food contact surface sanitizer^{***} (for use (in) (on) {insert use/surface – See Appendix 2})

(And even) (kills) (eliminates) 99.9% of (Listeria) (insert organisms – See Appendix 1) (Staph) in 10 seconds^{***}

Great for use as a (quick) (fast) non-food contact surface sanitizer^{***} (in) (on) ({insert use site/surface – See Appendix 2})

Kill(s) (99.9%) (of) (household) bacteria (in) (10) (seconds) (quickly) (fast) ^{***}

Kill(s) (Eliminates) 99.9% of bacteria^{***} (quickly)

Kill(s) (Eliminates) 99.9% of bacteria on hard, non-porous surfaces in (10) seconds^{***}

Kill(s) (Eliminates) bacteria on hard, non-porous surfaces in seconds^{***}

(Now) Kills bacteria^{***} in (10) seconds

(Quickly) Kills 99.9% of bacteria^{***}

Sanitizes (Kitchen^{††††}) (household) (bathroom) hard non-porous surfaces in (10) seconds ^{***}

Sanitizes (Kitchen^{††††}) (household) (bathroom) (surfaces) in (10) seconds^{***}

<< DISINFECTION CLAIMS – hard, non-porous surfaces – See Appendix 1 for (*) () (†) ⁽²⁾ ⁽⁶⁾ ⁽⁷⁾ ⁽⁸⁾ claim qualifiers >>**

(Now) (Proven to) (Kill(s)) (over) (XX) (#) (number of) (germs^{**}) including (E. Coli) (Salmonella^{**}) (Rotavirus) ({insert organisms – see Appendix 1) and many other listed (germs^{**}) (bacteria^(*)) (viruses[†]): {insert organisms – See Appendix 1}

(Now) (Proven to) (Kill(s)) (Germs^{**}) ({insert organisms – see Appendix 1}) (including) (Rhinovirus)

Cold (and) (&) Flu Virus Control[†]

Controls (the) Flu Virus[†]

Disinfects and cleans (tough) (stubborn) stains^{**}

Disinfects hard non-porous non-food contact surfaces ({insert sites / surfaces – See Appendix 2})

Disinfects (your) ({insert sites – See Appendix 2}) (and) (or) ({insert surfaces – See Appendix 2})

Disinfect(s)(ant)(ing) (wipe) (for) (to be used on) (to) (tackle) (combat) (clean) (disinfect) (pet) (related) (mess(es)) (and)

(odor(s)) (associated) (with) (your) (dog) (cat) (pet)

Disinfect (your cart) (before you shop)

NOTE: Bracketed information is denoted as: << directive >>, { insert as noted }, (optional text), [required qualifier].

The text “hard, non-porous surface(s)” will be disclosed in the use direction or in the claims.

The term “this product” used throughout this document may be replaced with the marketed product brand name.

To use the term “germ” the product must be efficacious against 2 of the 3 major classes of organisms.

The product label must identify the specific bacteria, virus, fungus & mold.

The term (x) is a placeholder that represents a number between 1 and 99.

The term “Y” is a placeholder for a character A – Z.

Each pre-moistened, disposable (wet) (cloth) (wipe) (is treated with a cleaner) (that actually), kills germs** (even the bacteria that cause odors) (wherever you use it)

Effective against (bacteria(*)) (viruses†) (germs**): {insert organisms – See Appendix 1}

Effective against (the) Cold Virus†

Effective against (the) Cold (and/ &) (flu) Virus(es)†

Effective against (the) Flu Virus(es)†

Flu Virus Control†

(Help) kill (germs**) (bacteria(*)) (viruses†) with (in one (swipe) (wipe))⁴

(Help(s)) reduce (the) cross contamination of (99.9% of) (germs**) (viruses†) (and) (bacteria(*)) (between treated surfaces)

Kills 10 cold and flu (viruses)†

Kill(s) (X(x)) (X%) (more) (bacteria(*)) (viruses†)⁽⁸⁾

Kill(s) 99.9% of bacteria and viruses**

Kill(s) 99.9% of viruses and bacteria**

Kill(s) {insert organisms – See Appendix 1}

Kill(s) antibiotic resistant bacteria* (such as) (HA-MRSA(**)) (E.Coli (**)) (ESBL(**))

Kill(s) (bacteria(*)) (viruses†) (and) (germs**) (and) (while) (it) clean(s) tough (bathroom) messes.

Kill(s) (the) cold & flu viruses, including Virus(es)†

(Kill(s)) (Effective against) (Controls) cold (and) (&) flu viruses†

(Kill(s)) (99.9%) (of) (Effective against) (the) (cold and flu) (flu) (cold) (viruses)†

(Kill(s)) Effective against viruses that (can) cause (the) cold (colds and flu) (flu) (colds)†

Kill(s) (Eliminates) 99.9% of (Flu Virus†) (Influenza A Virus†) (Influenza†) (Salmonella**) (Staph**) ({insert organisms – See Appendix 1})

Kill(s) (Eliminates) 99.9% of germs** (on hard, non-porous surfaces)

Kill(s) (Eliminates) (Disinfects) (kitchen†††) (bathroom) (living room) (bedroom) (common) (household) (bacteria(*)) (viruses†) (germs**)

Kill(s) (germs**) (bacteria(*)) (viruses†) (you can't see): (Flu Virus^(f)) (Staph**)

Kill(s) germs** (in) (the) ({insert sites – See Appendix 1})

Kill(s) germs** that ordinary cleaners don't.

Kill(s) (H1N1) (SARS) (Virus)†

Kill(s) (Avian) Influenza A ([H5N1]) Virus on environmental hard, non-porous surfaces

Kill(s) (the) (Influenza) (Influenza A) (Influenza B) (flu) virus† (in 30 seconds)

Kills 99.9% of germs** including Cold & Flu Viruses†

Kills 99.9% of (pet) (related) (bacteria)(germs) (including) ({insert from organisms from Appendix 1}) on hard nonporous surfaces in 4 minutes.

Kills Cold and Flu Viruses†

Kills (the) COVID-19 virus⁹

Kill(s) (99.9%) (of) (kitchen†††) (bathroom) (bedroom) (living room) (floor) Germs** (in 4 minutes)

Kills leading cause of (the) (common) cold (&) (flu) ⁽⁶⁾, stomach bug, (&) (stomach) flu ⁽⁷⁾

Kill(s) more than 99.9% of (bacteria and viruses**) (viruses and bacteria**)

Kill(s) odor-causing bacteria (at the source)

Kill(s) (over) (x) (kinds of) (germs**) (viruses†) (and) (&) (bacteria(*))

Kills over (40) (X) illness causing germs**

Kill(s) (Salmonella enterica (Salmonella)), the bacteria that (can) (may) cause(s) food poisoning

Kills (Salmonella**) (E. coli**) (HA-MRSA**) (RSV(†))

Kill(s) (Staphylococcus aureus (Staph)) the bacteria that (can) (may) cause skin infections like impetigo

Kill(s) the leading cause(s) of the common cold⁽⁶⁾

Lysol Brand Disinfectant products aid in the reduction of cross-contamination of germs** (on hard, non-porous surfaces)

(Now) (Also) (Even) Kill(s) Cold & Flu Viruses⁽⁶⁾ and Antibiotic Resistant Bacteria*

(Now) kills (even) (Rhinovirus) (germs) (viruses) (the) (#1 cause of the common cold) (the leading cause(s) of the common cold)⁽⁶⁾

(Now) kills (even) (more) (Cold (&) (and) Flu) (germs) (viruses) (than ever) (including) (the) (common cold) ⁽⁶⁾ (&) ((the) stomach (flu) (bug)⁽⁷⁾) ⁽⁸⁾

(Now) kills (more) (Cold & Flu) (viruses) (germs) (like) (including) (Rhinovirus) ⁽⁶⁾ (and) (Norovirus) ⁽⁷⁾ ⁽⁸⁾

(Now) tested (and proven (effective)) to kill (the) (COVID-19 virus⁹) (SARS-CoV-2)

(Now) tested (and proven (effective)) against (the) (COVID-19 virus⁹) (SARS-CoV-2)

(Now) tested (and proven (effective)) to help (reduce the spread of) (the) (COVID-19 virus⁹) (SARS-CoV-2)

NOTE: Bracketed information is denoted as: << directive >>, { insert as noted }, (optional text), [required qualifier].

The text "hard, non-porous surface(s)" will be disclosed in the use direction or in the claims.

The term "this product" used throughout this document may be replaced with the marketed product brand name.

To use the term "germ" the product must be efficacious against 2 of the 3 major classes of organisms.

The product label must identify the specific bacteria, virus, fungus & mold.

The term (x) is a placeholder that represents a number between 1 and 99.

The term "Y" is a place holder for a character A – Z.

On hard, non-porous, inanimate environmental surfaces this product kills the following (bacteria) (viruses) (germs):
{insert organisms – See Appendix 1}
(Overall) disinfection in 4 minutes**(!)
(Removes) (bacteria(*)) (viruses†) (germs**) ({insert organisms – See Appendix 1})
(Removes) (bacteria(*)) (viruses†) (germs**) from {insert surfaces – See Appendix 2}
(This product) kills (the following viruses): (Human Immunodeficiency Virus Type 1) (on hard, non-porous surfaces in 30 seconds
(This product) kills {insert organisms – See Appendix 1} (on hard, non-porous surfaces) (in 4 minutes)
Tough on Germs**
Unbeatable from (Cold & Flu) (germs) (viruses)
Use them (on kitchen counters****) before and after cooking to kill (common) (bacteria(*)) (viruses†) (germs**) (Use (them) (this product) on surfaces ({insert sites / surfaces – See Appendix 2}) (where (bacteria(*)) (viruses†) (germs**) may be a concern.)
Wipe down commonly touched surfaces around the (kitchen****) (bathroom) (bedroom) (such as) ({insert sites / surfaces – See Appendix 2}) to kill (bacteria(*)) (viruses†) (germs**) (throughout the house)

<< USE DIRECTIONS >>

DIRECTIONS FOR USE: It is a violation of Federal law to use this product in a manner inconsistent with its labeling.

<< FOR CANISTER PACKAGING >>

To Open: (Remove seal). Pull (center) wipe through (small) (star) opening. DO NOT PUSH FINGER THROUGH OPENING. Close to prevent moisture loss.

<< FOR POUCH PACKAGING >>

To Open: (Remove seal). Pull wipe through opening. Close to prevent moisture loss.

<< FOR REFILL PACKAGING >>

(To Refill: Remove lid. Place wipes in canister. Close lid.)

(For (Standalone)(On-The-Go) Use (:))

(To Open: Open (seal) (resealable) (lid) (top). Pull wipe through opening. Close to prevent moisture loss. (Re-thread if necessary.))

((For Use)(To Refill) (in) (Device) (Dispenser):)

(To Open: (Remove (dispenser)(container) and (refill) (pouch)(package)(packing)(pack) from (outer) carton (packaging). (Cut)(Tear)(Open) the (top) (side) (part) of the (refill) (pouch) (package) (packaging) (along the (dotted) line) (as indicated) (with scissors) (and/&) slightly pull (the very) (first) wipe (from the (front)(back)) (of pack). Press on (indented)(circular) (u-shaped) (ridged) (buttons) (on) (each) (or both) side of (reusable) (dispenser)(container) (cap)(top) (simultaneously) to detach the (dispenser)(container) (cap)(top) from (the) (main)(body) (dispenser)(container) and insert the (pouch) (refill) (package) (front-facing) into the (center of) the (dispenser)(container) (in between the clamps). Secure (top)(cap) back onto (the) (dispenser)(container) and open lid (with a simple push). (Pull)(Thread) (first) wipe through (small) opening. (DO NOT PUSH FINGER THROUGH OPENING.) Close to prevent moisture loss. (Re-thread if necessary))

<< USE DIRECTIONS – FOR ALL PACKAGING TYPES (Except Convenience Mop) >>

(To Clean (hard, non-porous surfaces) (/ Deodorize) (/ Remove Allergens††): Wipe surface clean. (No rinsing required.) (Repeat for stubborn stains.)

NOTE: Bracketed information is denoted as: << directive >>, { insert as noted }, (optional text), [required qualifier].
The text “hard, non-porous surface(s)” will be disclosed in the use direction or in the claims.
The term “this product” used throughout this document may be replaced with the marketed product brand name.
To use the term “germ” the product must be efficacious against 2 of the 3 major classes of organisms.
The product label must identify the specific bacteria, virus, fungus & mold.
The term (x) is a placeholder that represents a number between 1 and 99.
The term “Y” is a place holder for a character A – Z.

To Sanitize / Disinfect (on hard non-porous surfaces) (and / &) (non critical medical device or medical equipment surfaces): (Pre-clean surface.) Use a fresh wipe to thoroughly wet surface. Leave wet for 10 seconds to sanitize. Leave wet for 4 minutes to disinfect. (Rinse all food contact surfaces and toys with water after use.) (Discard in trash.)

(Always test on an inconspicuous (surface) (area) (soft surface) before use)

(To Spot Sanitize (Soft Surfaces) (Fabrics): Wipe the surface (&) (ensure it remains) (leave) wet for at least 4 minutes. Let air dry. (For difficult odors or heavy fabrics, repeat application.)

(§(To Control (and prevent) (the growth of) odor causing bacteria (up to (24)(48) hours): Pre-clean hard, non-porous surfaces. Wipe surface and (allow to remain wet for (X) minutes.) Allow the surface to air dry. (Leave product on surface.)(DO NOT TOUCH SURFACE.) Repeat (daily)(every 2 days)(every 3 days) or as needed.)

(+++**For surfaces that come in contact with food:** Use only on hard, non-porous surfaces and rinse thoroughly with potable water.)

(To Disinfect Toys: Use only on hard, non-porous surfaces and rinse thoroughly with water after use.)

(Rinse (child / baby) plastic toys, (child / baby) hard, non-porous surfaces and all food contact surfaces with potable water or a damp cloth after use.)

(To Clean Pet Messes (and) (Pet) (Odors) on hard non-porous surfaces: For liquid and solid messes remove loose (mess) (deposits) (dirt) (soils) and use a fresh wipe to thoroughly wet surface. Leave wet for 10 seconds to sanitize. Leave wet for 4 minutes to disinfect. (Rinse all food contact surfaces and toys with potable water after use.) (Discard in trash.)

(For use around pet areas: (Do not use wipe directly on pets.) (For best results treat (pet) stains immediately.) (Keep children and pets off area till dry.) ((Note that) certain (pet) stains may cause permanent discoloration even after cleaning.))

<< USE DIRECTIONS - FOR CONVENIENCE MOP >>

To use with (convenience) (quick clean) (mop) (sweeper):

Fix (wipe) (wet) (mopping) (cloth) (around) (on) (convenience) (quick clean) (mop) (sweeper).

(To Clean (hard, non-porous surfaces) (/ Deodorize) (/ Remove Allergens††): Wipe surface clean. (No rinsing required.) (Repeat for stubborn stains.)

To Sanitize / Disinfect (on hard non-porous surfaces) (and / &) (non critical medical device or medical equipment surfaces): (Pre-clean surface.) Use a fresh wipe to thoroughly wet surface. Leave wet for 10 seconds to sanitize. Leave wet for 4 minutes to disinfect. (Discard in trash.)

<< OPTIONAL ADVISORY STATEMENTS >>

Do not use (this product) on dishes, glasses, or utensils.

Do not flush (in toilet).

Do not use as a diaper wipe

Do not use on unfinished, oiled or waxed wood, unsealed tiles or carpet.

Do not leave this product on stainless steel surfaces to dry for more than one hour.

For food contact surfaces rinse with clean potable water after using this product.

For other surfaces, spot test in an inconspicuous area.

Not for (use) (on) (polished) (unsealed) marble, (no-wax) (unsealed) flooring, brass, and copper

Not (intended) for personal hygiene (or as a diaper wipe)

Not recommended for (bare) (unpainted) (wood) (or) (natural) (marble) (surfaces).

NOTE: Bracketed information is denoted as: << directive >>, { insert as noted }, (optional text), [required qualifier].

The text "hard, non-porous surface(s)" will be disclosed in the use direction or in the claims.

The term "this product" used throughout this document may be replaced with the marketed product brand name.

To use the term "germ" the product must be efficacious against 2 of the 3 major classes of organisms.

The product label must identify the specific bacteria, virus, fungus & mold.

The term (x) is a placeholder that represents a number between 1 and 99.

The term "Y" is a place holder for a character A – Z.

Unplug small electrical appliances before (use) (cleaning) (disinfecting) (with this product).
Will not harm (your) (septic tanks) (or) (plumbing)

For Soft Surface Spot Application:

Test in an inconspicuous [hidden] area (for color-fastness) prior to use.

Always test on a hidden (section) (area) of (fabric) (soft (surface) (furnishings))

Other Fabric Claims

[Suitable to] use on most upholstery fabrics (that are blends)

[Suitable to] use on most draperies [drapes] [curtains]

[Suitable to] use on most [mattresses] [couches][sofas][backpacks][pet beds][gym bags] [soft surfaces] [pillows]

[Suitable to] use on most fabric car upholstery

[Suitable to] use on most household fabrics

[Suitable to] use on most Carpets

[Suitable to] use everyday on [insert soft surface from above]

For use on [insert soft surface from above]

(Allow)(Let) (to) (air) dry completely (before wearing).

Do not use (on) (clothes)(fabrics) while wearing.

Not for use (on)(with) (intimates) (and / or) (underwear), children clothing.

No excessive usage on (clothing) (articles) between laundering.

Use (only) once in between washes

<< Additional USE DIRECTIONS / ADVISORY STATEMENT – Specific to Professional Branded products Only >>

<< HUMAN IMMUNODEFICIENCY VIRUS TYPE 1 [HIV-1 AIDS Virus] >>

(§§) KILLS HUMAN IMMUNODEFICIENCY VIRUS TYPE 1 [HIV-1 AIDS Virus] ON PRE-CLEANED ENVIRONMENTAL SURFACES / OBJECTS PREVIOUSLY SOILED WITH BLOOD / BODY FLUIDS, in health care settings or other settings in which there is an expected likelihood of soiling of inanimate surfaces / objects with blood or body fluids; and in which the surfaces / objects likely to be soiled with blood or body fluids can be associated with the potential for transmission of HIV-1 [associated with AIDS].

SPECIAL INSTRUCTIONS FOR CLEANING AND DECONTAMINATION AGAINST HIV-1 ON SURFACES / OBJECTS SOILED WITH BLOOD / BODY FLUIDS:

PERSONAL PROTECTION: When handling items soiled with blood or body fluids, use disposable latex gloves, gowns, masks and eye coverings.

CLEANING PROCEDURES: Blood and other body fluids must be thoroughly cleaned from surfaces and objects before application of this product.

CONTACT TIME: Allow surface / object to remain wet for 30 seconds for HIV-1.

DISPOSAL OF INFECTIOUS MATERIALS: Blood and other body fluids must be autoclaved and disposed of according to local regulations for infectious waste disposal.

<< TERMINAL STERILANT STATEMENT – unqualified metal surfaces >>

This product is not to be used as a terminal sterilant / high level disinfectant on any surface or instrument that (1) is introduced directly into the human body, either into or in contact with the bloodstream or normally sterile areas of the body; or (2) contacts intact mucous membranes but which does not ordinarily penetrate the blood barrier or otherwise enters normally sterile areas of the body. This product may be used to pre-clean or decontaminate critical or semi-critical medical devices prior to sterilization or high level disinfection.

<< USAGE CLAIMS >>

For Commercial Use

(§§) (This product) (meets) (is) (compliant with) OSHA Bloodborne Pathogens Standards for surface disinfection**

NOTE: Bracketed information is denoted as: << directive >>, { insert as noted }, (optional text), [required qualifier].

The text "hard, non-porous surface(s)" will be disclosed in the use direction or in the claims.

The term "this product" used throughout this document may be replaced with the marketed product brand name.

To use the term "germ" the product must be efficacious against 2 of the 3 major classes of organisms.

The product label must identify the specific bacteria, virus, fungus & mold.

The term (x) is a placeholder that represents a number between 1 and 99.

The term "Y" is a place holder for a character A – Z.

<< PRECAUTIONARY / FIRST AID / STORAGE & DISPOSAL >>

PRECAUTIONARY STATEMENTS: Hazards to Humans and Domestic Animals

CAUTION: Causes moderate eye irritation. Avoid contact with eyes or clothing. Wash hands thoroughly with soap and water after handling and before eating, drinking, chewing gum, using tobacco or using the toilet. Contains Citric Acid.

FIRST AID	
If in eyes:	<ul style="list-style-type: none">• Hold eye open and rinse slowly and gently with water for 15-20 minutes.• Remove contact lenses, if present, after the first 5 minutes, then continue rinsing eye.• Call a Poison Control Center or doctor for treatment advice.
CONTACT NUMBER	
Questions? Comments or In case of an emergency, call toll free (1-800-228-4722) (1-800-677-9218) (1-800-560-6619) (1-xxx-xxx-xxxx). Have the product container or label with you when calling a Poison Control Center, or doctor, or going for treatment.	

STORAGE AND DISPOSAL: Store in a cool dry area. Non-refillable (container) (package). Do not reuse or refill empty container. (Dispose of (wipe) (cloth) in trash after use.) Recycle empty container if available or discard in trash.

STORAGE AND DISPOSAL: Store in a cool dry area. Refillable (container) (package). Only refill with this product. (Dispose of (wipe) (cloth) in trash after use.) Recycle empty container if available or discard in trash.

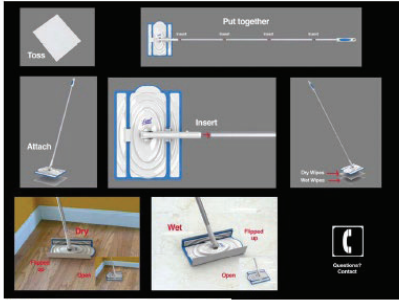
(Disposal instructions for biodegradable substrate) – [Note: only for biodegradable substrate]

(Suitable for municipal and (backyard) (home) composting.) ((For municipal composting,) dispose of wipe in the appropriate (home) (compost) (composting) (bin) (container), (suitable for backyard composting), (as directed by municipal composting facility). (Check locally for available facilities in your area.) (Refer to your local municipal facilities for more information.) (For home composting (use a composting bin designed for this purpose), do not compost wipe if used to clean non-compostable messes, such as human or animal waste. Wipes should generally be no more than 10% of home compost pile.))

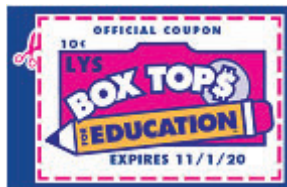
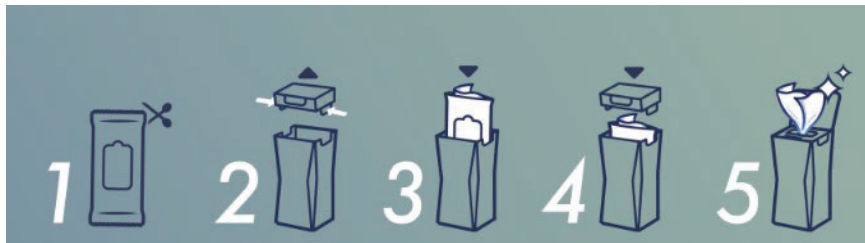
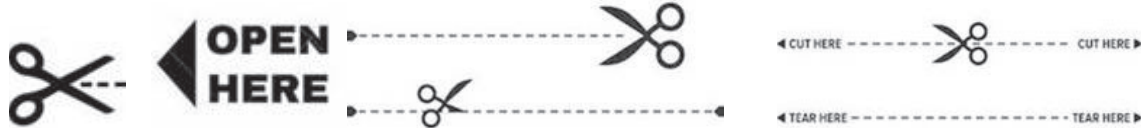
(Suitable for municipal and (backyard) (home) biodegradable disposal.) ((For municipal (biodegradable) disposal,) dispose of wipe in the appropriate (municipal) (container), (as directed by municipal (facility) (facilities)). (Check locally for available facilities in your area.) (Refer to your local municipal facilities for more information.) (For home biodegradable disposal (use a (disposal) bin designed for this purpose). (If wipe was used to clean non-biodegradable messes, such as human or animal waste, discard in trash.) (Wipes should generally be no more than 10% of home compost pile.)))

<OPTIONAL GRAPHICS>>

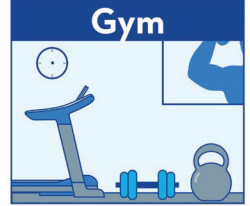
NOTE: Bracketed information is denoted as: << directive >>, { insert as noted }, (optional text), [required qualifier].
The text "hard, non-porous surface(s)" will be disclosed in the use direction or in the claims.
The term "this product" used throughout this document may be replaced with the marketed product brand name.
To use the term "germ" the product must be efficacious against 2 of the 3 major classes of organisms.
The product label must identify the specific bacteria, virus, fungus & mold.
The term (x) is a placeholder that represents a number between 1 and 99.
The term "Y" is a place holder for a character A – Z.



(Note to reviewer: The following are optional proprietary graphics)



NOTE: Bracketed information is denoted as: << directive >>, { insert as noted }, (optional text), [required qualifier].
The text "hard, non-porous surface(s)" will be disclosed in the use direction or in the claims.
The term "this product" used throughout this document may be replaced with the marketed product brand name.
To use the term "germ" the product must be efficacious against 2 of the 3 major classes of organisms.
The product label must identify the specific bacteria, virus, fungus & mold.
The term (x) is a placeholder that represents a number between 1 and 99.
The term "Y" is a placeholder for a character A – Z.



aaaaaaaa

NOTE: Bracketed information is denoted as: << directive >>, { insert as noted }, (optional text), [required qualifier].
The text "hard, non-porous surface(s)" will be disclosed in the use direction or in the claims.
The term "this product" used throughout this document may be replaced with the marketed product brand name.
To use the term "germ" the product must be efficacious against 2 of the 3 major classes of organisms.
The product label must identify the specific bacteria, virus, fungus & mold.
The term (x) is a placeholder that represents a number between 1 and 99.
The term "Y" is a place holder for a character A – Z.

[Note to reviewer: The following text is associated with the image above: “BONUS CERTIFICATE”

“(X) Bonus Box Tops” “Rules for Redemption

- 1) Save this certificate – it’s extra cash for your school.
- 2) Turn in to your participating K-8 Box Tops school.
- 3) Your school can redeem it to earn \$x.xx

This certificate expires xx/yy/zz. No photocopies or other reproduction will be accepted. Bonus Certificates may not be sold, exchanged or traded and can only be redeemed by an accredited K-8 school registered in the Box Tops for Education Program. “]

Above image is to help consumers know where to peel open the label/package to remove a cloth



The image in context of the label/package (to help consumers know where to peel open the package)



(Year will be included within the logo)



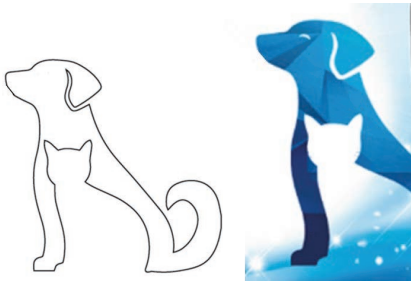
NOTE: Bracketed information is denoted as: << directive >>, { insert as noted }, (optional text), [required qualifier].
The text “hard, non-porous surface(s)” will be disclosed in the use direction or in the claims.
The term “this product” used throughout this document may be replaced with the marketed product brand name.
To use the term “germ” the product must be efficacious against 2 of the 3 major classes of organisms.
The product label must identify the specific bacteria, virus, fungus & mold.
The term (x) is a placeholder that represents a number between 1 and 99.
The term “Y” is a place holder for a character A – Z.



<< Optional Graphics for Pet Odor Eliminator >>



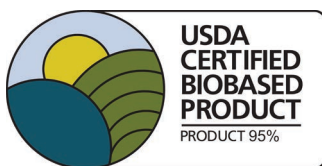
NOTE: Bracketed information is denoted as: << directive >>, { insert as noted }, (optional text), [required qualifier].
 The text "hard, non-porous surface(s)" will be disclosed in the use direction or in the claims.
 The term "this product" used throughout this document may be replaced with the marketed product brand name.
 To use the term "germ" the product must be efficacious against 2 of the 3 major classes of organisms.
 The product label must identify the specific bacteria, virus, fungus & mold.
 The term (x) is a placeholder that represents a number between 1 and 99.
 The term "Y" is a place holder for a character A – Z.



<< DO NOT FLUSH SYMBOL >>



<<BIOPREFERRED LOGO FOR VISCOSE SUBSTRATE>>



NOTE: Bracketed information is denoted as: << directive >>, { insert as noted }, (optional text), [required qualifier].
The text "hard, non-porous surface(s)" will be disclosed in the use direction or in the claims.
The term "this product" used throughout this document may be replaced with the marketed product brand name.
To use the term "germ" the product must be efficacious against 2 of the 3 major classes of organisms.
The product label must identify the specific bacteria, virus, fungus & mold.
The term (x) is a placeholder that represents a number between 1 and 99.
The term "Y" is a place holder for a character A – Z.



<< This graphic is white lettering and white graphics >>

This mark is not an indication of safety. Read and follow all label instructions.
<< This disclaimer must be on pack when the BioPreferred logo is in use.>>

<<Recycling Logos>>



<< Optional Icons for app >>



<< Graphics for Viscose Substrate >> [Note: only for the viscose substrate for Alternate CSFs # 5, 12, 13]



<<Note to Reviewer: these optional graphics will support bacteriostatic claims only>>

<<APPENDIX 1>>

<< SUPPORTING CLAIM QUALIFIERS – must appear before ‘Directions For Use’ on Back Panel label >>

†† (This product) removes the following allergens: (cat dander) (cockroach debris) (cockroach matter) (cockroach particles) (dog dander) (dust mite debris) (dust mite matter) (dust mite particles) (hair) (pet dander) (pet hair) (and) (pollen particles) (from) (timothy grass).

††† Swiffer® is registered trademark of Procter & Gamble Company. This product is not authorized, licensed,

NOTE: Bracketed information is denoted as: << directive >>, { insert as noted }, (optional text), [required qualifier].
The text “hard, non-porous surface(s)” will be disclosed in the use direction or in the claims.
The term “this product” used throughout this document may be replaced with the marketed product brand name.
To use the term “germ” the product must be efficacious against 2 of the 3 major classes of organisms.
The product label must identify the specific bacteria, virus, fungus & mold.
The term (x) is a placeholder that represents a number between 1 and 99.
The term “Y” is a place holder for a character A – Z.

- 1 Confirm school policy allows for use and / or donation of product. Adults must deliver donations (directly) to schools.
- ∞ (Cleans,) Scrubbing Wipe, Citrus Scent, Powers through Soap Scum, Strong Wipe, Removes Dust, Removes Grease, Removes tough Soil, Lifts Mess, Versatile Usage, Freshens
- ^ Chlorine Bleach
- & Strength of the wipe substrate material to resist tearing during use
- * **<< ANTIBIOTIC RESISTANT DISINFECTION QUALIFIER >>** Kills (and) (Escherichia coli with extended beta-lactamase resistance (ESBL)) (and) (Staphylococcus aureus - Methicillin resistant (MRSA)) ((Hospital Associated) Methicillin Resistant Staphylococcus aureus (MRSA)) on hard, non-porous surfaces in 4 minutes.
- ** Kills (99.9% of) {insert organisms – See organism list in this Appendix} on hard, non-porous surfaces in 4 minutes.
- *** Kills 99.9% of (the following) (bacteria) in 10 seconds: (Enterobacter aerogenes) (Staphylococcus aureus) (Listeria monocytogenes) on hard, non-porous surfaces (in 10 seconds).
- † Kills (Human Immunodeficiency Virus Type 1) ((Human) Coronavirus) (Influenza A Virus) (Influenza B Virus) (Influenza A H7N9) (Respiratory Syncytial Virus) (Swine Influenza A Virus [H1N1] (Influenza A Virus (H1N1)) (SARS-associated Coronavirus) (Influenza A H5N1 Avian) ({insert organisms – See organism list in this Appendix}) in 30 seconds on hard, non-porous surfaces.
- ¥ Kills 99.9% of (the following) (bacteria) in 4 minutes: (Staphylococcus aureus) (Klebsiella aerogenes) on 100% cotton (in 4 minutes)
- 2 cleaning performance (based on) ((when) compared to) (vs.) (previous) (Lysol® Brand II Disinfecting Wipes) (insert Lysol® brand name) (EPA approved master label) (label) (for this product) (version X) ({insert date}))
- 3 than our 35ct package
- 4 when used as directed
- 5 vs the strength of a paper towel
- 6 (Now) kills Rhinovirus, the #1 cause of the common cold
- 7 (Now) kills Norovirus (also known as (stomach flu) (or) (stomach bug)) ((&) (Rotavirus) leading cause(s) of foodborne illness, the stomach flu, and stomach bug)
- 8 (based on) ((when) compared to) (vs.) (previous) (Lysol® Brand II Disinfecting Wipes) (insert Lysol® brand name) (EPA approved master label) (label) (for this product) (version X) ({insert date}))
- 9 Kills SARS-CoV-2 on hard, non-porous surfaces (in 30 seconds)
- £ Wipes will (biodegrade) (compost) under backyard or municipal composting conditions, tested as per ASTM (D6868) (D6400) (under home & municipal conditions)
- € Ingredients are (readily) biodegradable as per OECD (test) methods

<< This section is for information purposes only – unless otherwise noted. >>

<< 4-min Disinfection - Bacteria - hard, non-porous surfaces >>	ATCC No.	<< 4-min Disinfection - Viruses >>	ATCC No.
Acinetobacter baumannii (Cephalosporin-Resistant)	BAA-2901	Rhinovirus Type 39 (Rhinovirus)	VR-340
Bordetella Pertussis	(12743)	Human Rotavirus	VR-2018
Carbapenem Resistant Escherichia coli	(CDC 81371)	Feline Calicivirus as a surrogate for Norovirus (Norovirus)	VR-782

NOTE: Bracketed information is denoted as: << directive >>, { insert as noted }, (optional text), [required qualifier].
 The text “hard, non-porous surface(s)” will be disclosed in the use direction or in the claims.
 The term “this product” used throughout this document may be replaced with the marketed product brand name.
 To use the term “germ” the product must be efficacious against 2 of the 3 major classes of organisms.
 The product label must identify the specific bacteria, virus, fungus & mold.
 The term (x) is a placeholder that represents a number between 1 and 99.
 The term “Y” is a place holder for a character A – Z.

Carbapenem Resistant Klebsiella pneumonia	(BAA-1705)		
Enterococcus faecium (vancomycin-resistant)	(BAA-2320)	<< 30 sec Disinfection – Viruses>>	
Escherichia coli (3rd Generation Cephalosporin-Resistant)	(BAA-2780)	2009-H1N1 Influenza A virus (Novel H1N1)	CDC2009712192
Escherichia coli O157:H7 (E.coli)	(43888)	Avian Influenza A (H3N2) Reassortant Virus	VR-2072
Escherichia coli with extended spectrum beta-lactamase resistance (ESBL)	(BAA 196)	Bovine Viral Diarrhea Virus as a Surrogate Virus for Human Hepatitis C Virus	VR-1422 (NADL)
Klebsiella aerogenes (multi-drug-resistant)	(AR-Bank 0547)	Duck Hepatitis B Virus as a Surrogate Virus for Human Hepatitis B Virus	
Klebsiella pneumoniae	(4352)	Herpes simplex virus type 1	VR-733 (F(1))
Klebsiella pneumoniae (3rd Generation Cephalosporin-Resistant)	(BAA-2784)	Herpes Simplex Virus Type 2	VR-734 (G)
Listeria monocytogenes	(19117)	Human Coronavirus	VR-740
Pseudomonas aeruginosa	(15442)	Human immunodeficiency virus type 1 (HIV-1)	
Salmonella enterica (Salmonella)	(10708)	Influenza A H5N1 Avian	CDC2006719965
Shigella dysenteriae	(11835)	Influenza A H7N9 Avian	CDC2013759189
Staphylococcus aureus - Methicillin resistant (MRSA)	(33591)	Influenza A Virus (H1N2)	A/Swine/Ohio/11SW128/2011 (BEI Resources)
Staphylococcus aureus (Staph)	(6538)	Influenza A Virus (H3N1)	A/Shanghai/11/87 (HA) x A/PR/8/34 (NA) (BEI Resources)
Streptococcus mutans	(25175)	Influenza B Virus	VR-823
Streptococcus pyogenes [Strep]	(12384)	Middle Eastern Respiratory Syndrome Coronavirus (MERS-CoV)	EMC/2012 (BEI Resources)
Vancomycin Intermediate Resistant Staphylococcus aureus	(CDC HIP 5836)	Parainfluenza Virus Type 3	VR-93
Vancomycin Resistant Staphylococcus aureus	(NARSA VRS1)	Respiratory Syncytial Virus (RSV)	VR-26
Vibrio cholerae	(14035)	SARS-associated Coronavirus (SARS-CoV-1)	CDC200300592
		SARS-CoV-2 (USA-WA1/2020)	N/A
<<10-sec Sanitization – Bacteria – Hard, non-porous, non-food contact surfaces>>			
Campylobacter jejuni	(33560)		
Enterobacter aerogenes	(13048)		
Listeria monocytogenes	(19117)		
Staphylococcus aureus (Staph)	(6538)		
<<4 min Sanitization – Bacteria – Soft Surfaces (100% Cotton)>>			
Staphylococcus aureus	(13048)		
Klebsiella aerogenes	(6538)		

<< APPENDIX 2 >>

<< SOILS / SURFACES / USE SITES – May be listed on product label in the singular or plural form >>

Soils: (Graphic – depicting soil)

Bacon fat	Dust	Limescale	Small spills
Baked on (cheese) (grease)	Everyday messes	Lint	Smudges
Bathtub rings	Fingerprint	Makeup	Soap Scum
Beverage stains	Food (residues) (particles)	Mildew (mold) stains	Stains
(Burnt on) Food (stains)	Footprints	Mud	Sticky messes
(Burnt on) Grease	Gravy	Oil	Tea (stains)
Chicken juice	Grease	Outdoor grime	Tomato sauce
Crayon	Grime	Pancake mix	(Dried on) Toothpaste

NOTE: Bracketed information is denoted as: << directive >>, { insert as noted }, (optional text), [required qualifier].
 The text “hard, non-porous surface(s)” will be disclosed in the use direction or in the claims.
 The term “this product” used throughout this document may be replaced with the marketed product brand name.
 To use the term “germ” the product must be efficacious against 2 of the 3 major classes of organisms.
 The product label must identify the specific bacteria, virus, fungus & mold.
 The term (x) is a placeholder that represents a number between 1 and 99.
 The term “Y” is a place holder for a character A – Z.

Coffee stains	(Pet) Hair	Particles (residues)	(Tough) messes
Cooking splashes	Hard Water (stain)	Peanut butter	Tough soil
Cosmetics	(Heel) (scuff) marks	(Pen) (or) (ink) marks	Wine (stains)
Crumbs	Honey	Pencil	(Build Up)
Dirt	Jelly	Pet messes	(Built) Up)
Dried on food	Juice stains	Pet stain(s)	

Non-living Allergens:

Cat dander	Cockroach particles	Dust mite matter	Pet dander
Cockroach debris	Dog dander	Dust mite particles	Pollen particles
Cockroach matter	Dust mite debris	(Hair) (Pet hair)	Timothy grass

<< SOILS / SURFACES / USE SITES – continued >>

Surface Types: (~ Non-Medical or Fixture)

Aluminum	Glass	Plastic Laminate
Brass	Glazed Ceramic	^ Plexiglas®
Chrome~	Glazed Enamel	Sealed (floors) (marble) (quartz) (stone)
^ Corian®	Glazed Porcelain	Sealed Granite
Crystal	(waxed) Linoleum	Sealed Terra Cotta
Sealed Enamel	(non-waxed) Linoleum	Sealed wood
Fiberglass Fixtures	Metal	Stainless Steel~
Finished Wood (floors)	Mirror	Tin
^ Formica®	Plastic	Vinyl

^ Corian® is a registered trademark of DuPont.
 ^ Formica® is a registered trademark of The Diller Corporation.
 ^ Plexiglas® is a registered trademark of the Atoglas Company

Hard, Non-porous Surfaces: (Graphic – depicting surface / use site)

Appliance exterior (handles)	Glazed Ceramic Tile	Navigation screens
Finished wood (furniture) (surfaces)	Smartphone	Pen
Potty trainer (seats)	(Computer) Keyboards	Pet (area(s))(space)(crate(s))
Baby carriages	Coffee maker ^{****}	Sealed Tiles
Fitness (Centers) Equipment	Glazed Porcelain Tile	Tiled wall ^{****}
Rails	Glass ^{****}	Toaster ovens ^{****}
Range hoods	Sports equipment	(E-Reader) (E-book)
Baseboards	(Laptop) (Computer) (Mouse)	(sealed wood) (Baby) (Furniture)
Blinds	Handheld player (MP3)	(Toilet) (Urinal) Exteriors
(Bathroom) (Kitchen) Fixtures	Handrail(s)	Electronic (book) (device)
Refrigerator exterior (shelves) ^{****}	Stainless Steel ~	Toilet Seats
(Plastic) Bathtub (Tub)	(Kitchen) Counter (Countertop) ^{****}	(Tool) (Toy) box(es)
(Bathroom) (Kitchen) floor	Highchair (sealed wood) ^{****}	Sealed Enamel Tile
Remote Control	Stove (Stovetop) ^{****}	Outdoor Furniture (except cushions/woodframes)
(sealed wood) Bed frames	(sealed wood) (Crib(s)) (rails)	Touch screen
(Laminate) (Laminated floors)	(iPod) (iPad)	Exhaust Fan (Hood)
(sealed wood) Shelves (shelving)	IV Pole(s)	Patio furniture

NOTE: Bracketed information is denoted as: << directive >>, { insert as noted }, (optional text), [required qualifier].
 The text "hard, non-porous surface(s)" will be disclosed in the use direction or in the claims.
 The term "this product" used throughout this document may be replaced with the marketed product brand name.
 To use the term "germ" the product must be efficacious against 2 of the 3 major classes of organisms.
 The product label must identify the specific bacteria, virus, fungus & mold.
 The term (x) is a placeholder that represents a number between 1 and 99.
 The term "Y" is a place holder for a character A – Z.

T-BONE

EPA Reg. No.: 777-139

Amendment: April 13, 2021

Page 33 of 35

(Plastic) Booster Seats	Strollers	Plastic Laundry Basket (Hamper)
Gadget	Desktop (monitor)	Trains
Shower (plastic/vinyl curtain) (Stall)	(sealed wood) Desks	Exterior of Toilets
(Area) (head)	Kitchen Surfaces ^{****}	(Plastic) Toys ⁽⁴⁾
(sealed wood) (finished) Cabinets	Table (Tabletop) ^{****}	Vanity Top
Gaming console	(Diaper) changing (Counters) (tables)	(Kitchen) (Bathroom) Faucet
(fittings) (hardware)	Light switches	Portable audio
Car seats	LCD(s)	Washable Wall
Car (Dashboard) (Steering Wheel)	Tablet	Wheelchairs
Cell phone	Diaper Pail	Walkers
Garbage Can (Pail)	(sealed marble) (glazed marble)	Window Sills
(Kitchen) (Bathroom) Sink (Basin)	Telephones (phones)	(-) Non-Medical or Fixture
Litter boxes	Door Knob (Handle)	⁽⁴⁾ Use on toys requires a rinsing
Sink(s)	(Microwave) Oven exterior ^{****}	step after disinfection – follow the
Changing Table		Directions for use for Toys.

<<Soft Surface Use Sites – Graphic – depicting surface >>

Back (School) packs	Diaper bag(s)	(Kitchen) seat cushion(s)	Suitcase (Luggage)
Bathroom mats	(Dog) (pet) (beds)	Mattresses(es) (Covers)	Tents
	(bedding) (Collar)		
Bedding (Bedspreads)	Draperies	Pet bed(ding)	(Throw) Pillows
Blankets (Comforters)	Duvet cover(s)	Pillows	(Upholstered) chairs
Box Springs	(Fabric) Gym bags	Rugs (Carpets)	(Upholstered) couches
(Canvas) (Fabric) (shoes)	(Fabric) Laundry bags	School (bags) (packs)	(Upholstered) furniture
(sneakers)			
Carpets	Fabric (shoes) (sneakers)	Seat Cushion(s)	Upholstery
Car (Seats) (Upholstery)	(Fabric) Shower Curtains	Shoe interior(s)	
(Cotton) (Fabric) purses	(Fabric) Window treatments	Slippers	
Cots	Gym bags	Sleeping Bags	
(Couch(es)) (Sofas)	Hamper	Sofas	
Curtains	High chair seat (s)	Soft surfaces(s)	
Cushions(s)	(Household) seat cushion(s)	Stroller(s) (seats)	

Patterns/Textures: (Graphic – depicting images)

3D	Quilted	Embossed
Interlocking	Scrub(by)(ing)	Ripple(s)
Trapper	Dots	Honeycomb
Big Pocket	(Ultra) (Weave) (Woven)	Pattern
Inverted Squares	Squares	Wipe
Triple Knitted	Locker	Technology
Bumps	Grooved	Peaks & Valleys
Knit(ted)	Stronger	Woven
Gripper	Thicker	Diamond
Grooves	Raised	Pillow Top
Texture		(Texture)

Household Use Sites: (Graphic – depicting use site)

NOTE: Bracketed information is denoted as: << directive >>, { insert as noted }, (optional text), [required qualifier].
 The text “hard, non-porous surface(s)” will be disclosed in the use direction or in the claims.
 The term “this product” used throughout this document may be replaced with the marketed product brand name.
 To use the term “germ” the product must be efficacious against 2 of the 3 major classes of organisms.
 The product label must identify the specific bacteria, virus, fungus & mold.
 The term (x) is a placeholder that represents a number between 1 and 99.
 The term “Y” is a place holder for a character A – Z.

Automobiles (Interiors)	Boats	Work(place)
Airplane (Trays) (Bathrooms)	Home / House	Subway(s)
Dorm Room	High Chairs	(Water) (Drinking) Fountain (toggles)
Nursery	Jungle Gym(s)	(handles) (buttons)
Baby's room	Pet areas	Storage Areas
Entrances	(Sealed) Picnic Tables ⁺⁺⁺	Children's rooms
Office	Portable Bathrooms	Laundry room
Basement	Porta Potty	Toddler's room
Family Room	Public changing tables	(Trash) (Garbage) (Recycling)(Can(s))
Patio Furniture	(Public) (Commuter) Buses	(Bin(s))
Bathroom (restroom)	Play Areas	Closets
Foyers	Rec(reational) Centers (Facilities)	Living room
Gas Stations	Car(s) (Interiors)	Locker Rooms
Electronics	Campgrounds	Vacation homes
Bedroom	Church(es)	(Window Sills)
(Health Clubs) (Gym(s))	Kitchen ⁺⁺⁺	(Classroom) Desks
Playground(s) (Equipment)	Ship(s)	Mudrooms
Playroom	Train(s)	All around the (house) (home)

Business Use Sites: (Graphic – depicting use site)

Airports	Grocery/Shopping Carts	Patient (Chairs) (Room)
Ambulances	Grocery Stores	Physician's Office
Bathroom (Institutional)	Gymnasium (Gym)	Public (eating) places ⁺⁺⁺
Blood bank	Health Clubs/Fitness Centers	(Public) Restroom
Bowling Alleys	Healthcare (Center(s))(Facility)	(Public) Telephones
Breakrooms ⁽⁺⁺⁺⁾	Hotel/Motel	
Cafeteria ⁺⁺⁺		
Classrooms		
Clinics	Institutions (Institutional)	Recreational Center
College	Kennels	Restaurant (Tables) ⁺⁺⁺
Commercial Building	Laboratories	
Cuspidors	Laundromat	Rest Stops
Day Care Center	Malls	RV
Dental Office	Medical Clinic	School (buses)
	Military Institutions	Shelter
Doctors Office	Nursery (Schools)	Sick Room
Elevators	Nursing Home	Stretchers
Examination Tables	Office (Building) (Areas)	Veterinary (Offices) (Clinics)
Gas Stations	Operatories	Waiting Room

<< APPENDIX 3 >>

<< EMERGING VIRAL PATHOGENS CLAIMS – Hard, non-porous surface >>

{(Product Name)} (This product) qualifies for emerging viral pathogen claims per the EPA's 'Guidance to Registrants: Process for Making Claims Against Emerging Viral Pathogens not on EPA-Registered Disinfectant Labels' when used in accordance with the appropriate use directions indicated below.

{(Product Name)} (This product) meets the criteria to make claims against certain emerging viral pathogens from the following viral categories:

- Enveloped Viruses
- Large non-enveloped virus
- Small non-enveloped virus

NOTE: Bracketed information is denoted as: << directive >>, { insert as noted }, (optional text), [required qualifier].
 The text "hard, non-porous surface(s)" will be disclosed in the use direction or in the claims.
 The term "this product" used throughout this document may be replaced with the marketed product brand name.
 To use the term "germ" the product must be efficacious against 2 of the 3 major classes of organisms.
 The product label must identify the specific bacteria, virus, fungus & mold.
 The term (x) is a placeholder that represents a number between 1 and 99.
 The term "Y" is a place holder for a character A – Z.

For an emerging viral pathogen that is a/an...	...following the directions for use for the following organisms on the label:
Enveloped virus	Norovirus (Feline Calicivirus Surrogate)
Large non-enveloped virus	Norovirus (Feline Calicivirus Surrogate)
Small, non-enveloped virus	Norovirus (Feline Calicivirus Surrogate)

{(Product Name)} (This product) has demonstrated effectiveness against viruses similar to [name of emerging virus] on hard, [porous and/or non-porous surfaces]. Therefore, {product name} can be used against [name of emerging virus] when used in accordance with the directions for use against Rotavirus WA, Rhinovirus Type 39, and Feline Calicivirus as a surrogate for Norovirus on [hard, porous/non-porous surfaces]. Refer to the [CDC or OIE] website at [pathogen-specific website address] for additional information.

[Name of illness / outbreak] is caused by [name of emerging virus]. {Product name} kills similar viruses and therefore can be used against [name of emerging virus] when used in accordance with the directions for use against Rotavirus WA, Rhinovirus Type 39, and Feline Calicivirus as a surrogate for Norovirus on [hard, porous/non-porous surfaces]. Refer to the [CDC or OIE] website at [website address] for additional information.

<< APPENDIX 4 >>

<< This product is free from the following components >>

Dyes	(phosphates) (phosphorous)
(chlorine) bleach	Plastic microbeads
(Harsh) acids	

NOTE: Bracketed information is denoted as: << directive >>, { insert as noted }, (optional text), [required qualifier].
 The text "hard, non-porous surface(s)" will be disclosed in the use direction or in the claims.
 The term "this product" used throughout this document may be replaced with the marketed product brand name.
 To use the term "germ" the product must be efficacious against 2 of the 3 major classes of organisms.
 The product label must identify the specific bacteria, virus, fungus & mold.
 The term (x) is a placeholder that represents a number between 1 and 99.
 The term "Y" is a place holder for a character A – Z.