



UNITED STATES ENVIRONMENTAL PROTECTION AGENCY
WASHINGTON, DC 20460

OFFICE OF CHEMICAL SAFETY
AND POLLUTION PREVENTION

January 28, 2019

Amanda Landolt
Senior Regulatory Associate
Reckitt Benckiser LLC
Morris Corporate Center IV
399 Interpace Parkway
Parsippany, NJ 07054

Subject: Notification per PRN 98-10 – Updated graphics and marketing claims
Product Name: Sting
EPA Registration Number: 777-114
Application Date: November 12, 2018
Decision Number: 546910

Dear Ms. Landolt:

The Agency is in receipt of your Application for Pesticide Notification under Pesticide Registration Notice (PRN) 98-10 for the above referenced product. The Antimicrobials Division (AD) has conducted a review of this request for its applicability under PRN 98-10 and finds that the action requested falls within the scope of PRN 98-10.

The label submitted with the application has been stamped “Notification” and will be placed in our records.

Should you wish to add/retain a reference to the company’s website on your label, then please be aware that the website becomes labeling under the Federal Insecticide Fungicide and Rodenticide Act and is subject to review by the Agency. If the website is false or misleading, the product would be misbranded and unlawful to sell or distribute under FIFRA section 12(a)(1)(E). 40 CFR 156.10(a)(5) list examples of statements EPA may consider false or misleading. In addition, regardless of whether a website is referenced on your product’s label, claims made on the website may not substantially differ from those claims approved through the registration process. Therefore, should the Agency find or if it is brought to our attention that a website contains false or misleading statements or claims substantially differing from the EPA approved registration, the website will be referred to the EPA’s Office of Enforcement and Compliance.

If you have any questions, you may contact Tara Flint email at flint.tara@epa.gov or Eric Miederhoff at Miederhoff.eric@epa.gov.

Sincerely,

A handwritten signature in blue ink that reads "E. Miederhoff". The signature is written in a cursive style with a large, stylized initial "E".

Eric Miederhoff
Product Manager 31
Regulatory Management Branch I
Antimicrobials Division (7510P)
Office of Pesticide Programs

<< FRONT PANEL >>

ACTIVE INGREDIENT:

Alkyl (50% C₁₄, 40% C₁₂, 10% C₁₆) dimethyl benzyl ammonium chloride 0.26%

OTHER INGREDIENTS: 99.74%

TOTAL: 100.00%

KEEP OUT OF REACH OF CHILDREN

CAUTION: See (back) (side) panel for additional precautionary statements.

(NET CONTENTS:) X
X + X
Eg. 500
75 + 5

NOTIFICATION

777-114

The applicant has certified that no changes, other than those reported to the Agency have been made to the labeling. The Agency acknowledges this notification by letter dated:

01/28/2019

(___ x ___) inches

(___" x ___")

7" x 5 3/4"

7.0" x 7.0"

Pouch	Count	Wet cloths	Container
Canister	Individually Wrapped	Wet wipes	Pack
Box	Pre-Moistened	Wet wipe rolls	Peel & reseal (package)
ct	Towelettes	Wet mopping cloths	Package
Wipes	Floor	Refill	Resealable
		Disposable	Reusable

(Does not include weight of dry wipe)

(Includes weight of absorbent (wet) (mopping) (wipe) (cloth))

(___ OZ.) (___ LB. ___ OZ.) (___ g)

<< FRONT / BACK PANEL >>

EPA Reg. No.: 777-114

EPA Est. No.:	777-NJ-2 (Y) (YY)	777-IL-1(Y) (YY)	52631-NJ-001(Y) (YY)	8251-WI-003 (Y) (YY)
	777-MO-001 (Y) (YY)	777-POL-001(Y) (YY)	41925-WI-001(Y) (YY)	8251-WI-005(Y) (YY)
	777-PA-001(Y) (YY)	082206-NY-003(Y) (YY)	475-MO-001(Y) (YY)	70930-PA-001(Y) (YY)
	50757-WI-1(Y) (YY)	082206-NY-002(Y) (YY)	63650-WI-1 (Y) (YY)	475-PA-1 (Y) (YY)
	777-GA-1 (Y) (YY)	74291-MO-1 (Y) (YY)	777-MO-002	

See (bottom) (side) (cap) (for Lot / Date code)

(Beginning of) (batch) (lot) code indicates EPA (Est.) (Establishment) (#) (No.) (Number)

See (batch) (lot) code for EPA (Est.) (Establishment) (#) (No.) (Number)

NOTE: Bracketed information is denoted as: << directive >>, { insert as noted }, (optional text), [required qualifier].
The term "this product" used throughout this document may be replaced with the marketed product brand name.
To use the term "germ" the product must be efficacious against 2 of the 3 major classes of organisms.
The product label must identify the specific bacteria, virus, fungus & mold.
The term (x) is a placeholder that represents a number between 1 and 99.
The term "Y" is a place holder for a character A – Z.

<< BACK PANEL >>

Questions? (📞) (Call:) (1-800-228-4722) (1-xxx-xxx-xxxx)
For ingredient (and other) information, www.rbnainfo.com (website)

(Patents: www.rb.com/patents)

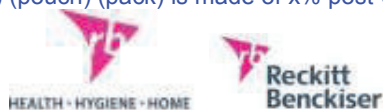
(Made in U.S.A.) © {year} RB

Distributed by: Reckitt Benckiser, Parsippany, NJ 07054-(xxxx)

Contains no (phosphates) (ammonia) (silicones)

This (canister) (container) (pouch) (pack) is made of x% post-consumer recycled plastic.

Company graphic logo



<< BACK PANEL – Optional text >>

Important facts (about this product):

IMPORTANT: For directions for use and first aid instructions in Spanish, please call 1-877-843-3817.

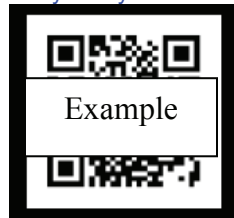
<< Spanish Translation >>

IMPORTANTE: Para instrucciones de uso y primeros auxilios en español por favor llame al 1-877-843-3817.

Learn more about (the importance of good hygiene habits) (and) (the appropriate use of disinfectants) (in good hygiene) (and the many ways that Lysol® is promoting good hygiene habits) (for your family and community)

(Be a Part of Lysol®) (Learn more about Lysol®)

Recycle Symbol



(Use your phone to) (and) (or) (scan) (the) (tag) (or) (this code) (to learn) (or) (to) (see) (more) (uses) (or) (information) (videos) (on how to use) (this product) (for) (how to) (tips)

<< NOTE: Any claim may appear on either FRONT / BACK panel in bullet / paragraph format – Unless otherwise noted. >>

<< INTRODUCTORY 6-mos. CLAIMS – will only appear on graphic label for the first 6 months product is on shelf >>

(Better) (improved) (cleaning)

(Now) (Improved) (More) (Better) (cleaning power) (performance)

(New) (and)(&) (improved)(long lasting)(longer lasting)(look)(lighter)(refreshing) (softer) (gentle) (fragrance) (scent) (Performance)

(New) (and)(&) (improved) (stronger) (thicker) (better) (revolutionary) (innovative) {insert pattern / texture – See Appendix 2}

(New) {insert pattern / texture – See Appendix 2} cleans (picks up)

(New) {insert pattern / texture – See Appendix 2} for (better) (easier) cleaning

(New) {insert pattern / texture – See Appendix 2} that traps (and locks) (more) (messes)

(New) Low-Streak Formula

(New) Lower-Streak Formula

New lower streak formula that leaves less streaks than before, even on your shiniest surfaces

(New) (wipe) (wet) (mopping) (cloth) {insert pattern / texture – See Appendix 2} (traps) (locks) (locks in) (picks up) (more)

{insert soils / allergens – See Appendix 2}

NOTE: Bracketed information is denoted as: << directive >>, { insert as noted }, (optional text), [required qualifier].
The term “this product” used throughout this document may be replaced with the marketed product brand name.
To use the term “germ” the product must be efficacious against 2 of the 3 major classes of organisms.
The product label must identify the specific bacteria, virus, fungus & mold.
The term (x) is a placeholder that represents a number between 1 and 99.
The term “Y” is a place holder for a character A – Z.

(New Size) (New Large Size) (New X-tra Large Size) (Wipe) (Cloth) (Canister) (Package)
(New) tougher (wipe) (wet) (mopping) (cloth) (for tougher cleaning) (for your tougher jobs)
(New) (Unbeatable) (Dirt) Lifting⁷
(New) (Unbeatable) Grease Cutting⁷
(New) (Active) Lift (Cleaning) (Technology) ⁽⁷⁾
(New) (Easy) (Dispensing) (Cap)
(New)(Improved⁷) (Stronger⁷) (Better⁷) Cleaning Formula to (power through) (eliminate) (clean) (soap scum) (grime) (bathroom soil) {insert soil from Appendix 2}

<< CROSS-PROMOTIONAL CLAIMS >>

Like {insert Lysol® brand name} (trigger)(cleaner)? Try (our) {insert Lysol® brand name} {insert picture of Lysol® Disinfecting Wipes}

Like this (fragrance)(product)? Try (our) other Lysol® products {insert picture of Lysol® products}

Try our other Lysol® (cleaning)(disinfecting)(sanitizing) (products)(fragrances) {insert picture of Lysol® products}

Try our Lysol® family of (cleaning)(disinfecting)(sanitizing) products {insert picture of Lysol® products}

<< FRAGRANCE CLAIMS >>

Apple Aqua	Fresh Linen Fresh (Waterfall)	(Meyer) Lemon (Citrus) Lemon & Lime Blossom(s)	Wildflower
(Autumn) (Wood(s))	Fruit(s) Gardenia Grapefruit	Lime Linen	Rain(fall) (Spring) Waterfall (Breeze) (Scent)
(Berry) (and) (&) (Basil)	Green Apple	Ocean (Fresh) Open Window (Fresh)	Summer (Fresh) (Blossom(s))
(Lemon) (Citrus)	Hawaii Hibiscus Jasmine	(Florida) (California) Orange	No (Fragrance) (Scent (Fresh) (Clean) (Scent) (Fragrance) (Scent) Free
Driftwood Waters Citrus Meadows (Cool) Adirondack Mountain (Air) Cranberry Tropical Linen	(Key) (Lime) Lavender & Eucalyptus Lavender (Fields)	Orchard	Tropical Coconut Cool Wave (White Sails)

The following can be the beginning/end of any fragrance:

(Zest) (Spritz) (Essence) (Mist(y)) (Bloom) (Orchard) (Garden) (Bliss) (Berry) (Calming) (Morning) (Meadows) (Cool) (Air)
(Country) (Crisp) (Energy) (Fragrance) (Spice) (Floral) (Hint of) (Fields) (Lush) (Pure) (Sheer) (Sparkling) (Burst) (Blast) (Bay)
(Wave(s)) (Blue) (Sun-Kissed) (Bouquet) (French) (Cascading) (Blend) (Fresh-picked) (Ripe) (Rustic) (Fusion) (Crystal) (Dew)
(Medley) (Fruit(y)) (Escape) (Power) (Herbal) (Island) (and) (Harvest) (Valley) (Whisper) (Scent(ed)) (Soft) (Gentle) (Simple)
(Simply) (Serene) (Shower) (Glacier) (Stream) (Tropical) (Petals) (Early) (Modern) (Fresh) (Floral) (Smell) (Scent) (Cucumber
(and)(&) (Basil) (Peony) (Red) (Fruits) (Mango) (Escape) (Freshcut) (Herbs) (Sea Salt) (Minerals) (Aloe) (Wild) (Infusion) (Berries)

<< PACKAGING CLAIMS >>

(x) (Free) (Dual Action) (Wipes) (Cloths)

(x) more (extra) (wipes) (cloths) (free)

(x) (Multi) (Pack) (Canister) (Package)

X (canisters) (containers) with x refill (pouches)

(x) (%) Free (Wipes) (Wet) (Mopping) (Cloths)!

(x) (%) (More) (Wipes) (Mopping) (Cloths) (Value) (*) (when compared to (x) ct (canister) (package)) ((*vs. Lysol Disinfecting Wipes) ({insert brand name}) (x) (ct)

(x) (Wipes) (Cloths) for the price of (x) (!)

NOTE: Bracketed information is denoted as: << directive >>, { insert as noted }, (optional text), [required qualifier].
The term "this product" used throughout this document may be replaced with the marketed product brand name.
To use the term "germ" the product must be efficacious against 2 of the 3 major classes of organisms.
The product label must identify the specific bacteria, virus, fungus & mold.
The term (x) is a placeholder that represents a number between 1 and 99.
The term "Y" is a place holder for a character A – Z.

Sting

EPA Reg. No.: 777-114

(X) (X Pack) (X Wipes)

X Wipes + X Wipes (=) X Wipes

X (extra) feet (more) (of cleaning)⁷

X (more) days (of cleaning)⁷

(X) x more cleaning with (X)x more wipes⁷

X(x) (%) more wipes⁸

X Refills

X (%) (more) Wipes for the price of X

(+) (x) (Pack) (Free) (Wipes)

2 (for) (in) 1 Pack (!)

2-Go

(2) (3) (X) Scent(s) (pack)

2x value (!)

(3) (Canisters) (Packages) (Each) (Total)

100% (More) (!)

(30 (Wipes) (Cloths) Free!)

(110 (Wipes) (Cloths) for the price of 80)

Also available (in)(as) (the) (a) (X) (count) (size) (pack)

Basic (Wipes)

(Better) value

(Better⁸) (Improved⁸) (Hassle-free) (Easy) (One-handed) dispensing –or–dispenser

(Bonus) (Amazing) (Economy) (Great) (Jumbo) (Larger) (Mega) (Portable) (Super) (To Go) (Travel) (Trial) (Tub) (Value)

(Refill) (Size) (Range) (Pack) (Package)

(Bonus) (Free) (X) (Wipes) (Wet) (Mopping) (Cloths)

(Bonus) (Free) Lysol Disinfecting Spray (To Go) (1oz) (inside)

Bonus Pack 35% (More) (Wipes) (Cloths)!

Bonus Pack X% (More) (Wipes) (Cloths)!

(Bonus)(X%)(Free)

(Bonus Pack) (With) (Free Canister) (Free Package) (Free Pouch)

(Buy (x) Get (x) Free!) (Total _____ Wet (Wipes) (Mopping) (Cloths)) (1 x 28) (1 x 35) (___ x ___)

Buy (X) (plus) (and) get (a) Bonus (Dual Action) (Wipes) (Cloths) (Canister) (Package)

Buy Lysol Disinfecting Wipes (X) (pack) (and) Get Lysol Disinfecting Spray (To Go) (1oz) Free

Convenient

Compact (and)(&) Convenient (dispensing) (cleaning)

(ct) (Wipes) (Wet) (Mopping) (Cloths)!

Designed to Leave (the pack) Out on the Counter

Disinfection (Value) Pack

Dispenses (Comes out) one (wipe) (cloth) at a time

Dispense(s) (wipes) with (only) (just) one hand

(Drops) (Slides) into an empty (disinfecting) (wipes) (canister) (container)

(Drops) (Slides) into an empty (disinfecting) (wipes) canister -or- container

Dual Pack

(Easy) (Simple) (Quick) to (dispense) (refill) (use)

(Easier) (Simpler) (than ever) to (dispense) (use)⁸

(Easy) (Dispensing) (Cap)

(Easily) Grab (wipes) one at a time

Easy open (easy fill)

Easy pull (from start to finish)

Easy to carry around the house

Easy to refill

Easy to (store) (stack)

Effortless dispensing (!)

Extra Value at no Extra Cost (!)

(Extra) (Pack)

(Extra) (Large) (size) (wipes) (great) (perfect)for large (cleaning) jobs!

Fills (x) (ct) (size) (wipe) (cloth) (canisters) (peel & reseal) (package) (packages)

NOTE: Bracketed information is denoted as: << directive >>, { insert as noted }, (optional text), [required qualifier].
The term "this product" used throughout this document may be replaced with the marketed product brand name.
To use the term "germ" the product must be efficacious against 2 of the 3 major classes of organisms.
The product label must identify the specific bacteria, virus, fungus & mold.
The term (x) is a placeholder that represents a number between 1 and 99.
The term "Y" is a place holder for a character A – Z.

Sting

EPA Reg. No.: 777-114

Notification: November 12, 2018 (version 3)

Page 5 of 33

Fits almost anywhere

Fits in (your) (car) (glove compartment) (cup holder) (purse) (bag) (gym bag) (diaper bag)

Free (Lysol®) (Dual Action) (Disinfecting) (Wipes) (Cloths)

(Free) (Lysol®) Dual Action (For) Free

FREE SAMPLE – NOT FOR RESALE

Grab (and)(&) Go

Great for the (road) (travel) (travelling)

Keep -or- Carry (one) (some) (a package) (pouch) (pack) in your (purse) (diaper bag) (backpack) (gym bag)

Limited time value (pack)

Mini (pack)

(More) value, same price

(More) (Wipes) (Cloths) (!) (x) ct

(New Size) (New Large Size) (New X-tra Large Size) (Wipe) (Canister)

Not for retail sale

On the Go

One-handed dispensing

Our (best) (easiest) (smoothest) dispensing ever⁽⁸⁾(!)

Pocket (Size) (Pack)

(Portable) (Purse) (Travel)(Trial) (Size) (Pack)

Pop Action

Pop-Up-Cap

Pop-up top

Pop(s) Up

(Press) (tear) here

Pull Up Here

(Pull) (Get) 1 wipe at a time, every time!

(Quick) (Ready) (Pull) (Dispense) (Dispensing)

Redesigned dispenser

Refill (x) Pack

Refillable

Refills (now) available

Resealable (twin) (pack)

Same Lysol Wipes (that you love), Easier⁷ to (use) (dispense) (grab)

SAMPLE ENCLOSED – NOT FOR RESALE

Save More

Scratch (and)(&)(‘N) Sniff

Scratch (Me)(Here)

Single (sheet) (wipe) dispensing!

(Small) (size) (wipes) (great) (perfect) for small (cleaning) jobs!

Take it with you

(Take) (Carry) (it) (this product) (anywhere) (everywhere)

(Tear) (open) (here) (to open)

Try (Me) (For) (Free) (Out) (Rebate)

(Universal) Refill (Pack)

Use in (x) ct (canister) (peel & reseal) (pack) (package)

(Wipes) (Wet) (Mopping) (Cloths) (Refill) (Value) (x) (Pack) (Package)

Wow (!)

<< PURCHASE / SCHOOL SUPPLY PACKAGE CLAIMS >>

1 for every room, including the classroom!

(X) + (X) Free (=)(equals) (X)

x box tops, clip (them) (‘em) now and get (money) (cash) for your school

(x) for you / (x) for the classroom

(X) Box Tops for Education

NOTE: Bracketed information is denoted as: << directive >>, { insert as noted }, (optional text), [required qualifier].
The term “this product” used throughout this document may be replaced with the marketed product brand name.
To use the term “germ” the product must be efficacious against 2 of the 3 major classes of organisms.
The product label must identify the specific bacteria, virus, fungus & mold.
The term (x) is a placeholder that represents a number between 1 and 99.
The term “Y” is a place holder for a character A – Z.

(x) Box Tops on (back) (side) of pack
(x) eBoxTops™ No Purchase Necessary see (side) (back) for details
(x) prizes to win!
(X)(%) free for (your) (school)(class) (and / &) (college)(university)
A school supply (item) to (help) kill germs (**)(1)
(An) (Important) school supply checklist (item)(1)
Back to school (item) (special) (value) (limited time) (limited edition) (pack) (1)
Back to school doesn't have to mean back to germs (**) (with Lysol®)
Back to school back to clean(!)
Back to school (checklist)(essentials)(needs) (for) (disinfecting)
Back to school Supply Value Pack (1)
Back to school, back to germs
Be ready for school with Lysol® at home
(x) Bonus box tops
Box Tops for Education and associated words and designs are trademarks of General Mills, used under (a) license. ©General Mills
(Buy) (x) for Teacher (/)(+)(and)(&) (x) for Home (1)
(Buy) (x) for Home (/)(+)(and)(&) (x) for Teacher (1)
(Buy) (x) for Kitchen (/)(+)(and)(&) (x) for Bath (/ (1))(x) for Living Room
(Buy) (x) for School (/)(+)(and)(&) (x) for Home (1)
(Buy) (x) for Home (/)(+)(and)(&) (x) for School (1)
(Buy) (x) for Home (/)(+)(and)(&) (x) for Office
(Buy) (x) for Office (/)(+)(and)(&) (x) for Home
Buy 3(x) Get 1 Free (for) (to) (give) (to) (your) (School) (Classroom) (Teacher) (1)
Buy Lysol and get \$x to donate / help support your school
Buy Lysol, earn \$ for your school
Buy x, get x free for your teacher
Buy (Lysol (Disinfecting Wipes)) (this product) and get (X) (Box Tops) for your (school) (classroom)
Buy (Lysol (Disinfecting Wipes)) and get (X) (Box Tops) (donated) (to) (support) (help) your school
Buy (Lysol (Disinfecting Wipes)) (and) earn (money) (\$) for your school
Buy (x) Get (x) (free) for your (school) (teacher)
(Buy) (x) for you / (x) for school
(Buy) (Lysol) (give) (money)(cash)(\$ (to) (your) (school) (+X) (free) (for) (your) (school)(classroom) (BoxTops) (=) (\$) (for) (computers)(text)(books)(playground)(equipment)(supplies) (and / &) (more)(!)
Buy (x) Lysol (get) (x) (free) (earn) (cash)(\$ (for) (your) (school) (with) (every) (purchase)
Check Lysol off the list
Do not remove [label] [sticker]/((cut out) Box Tops for Education proof of purchase until product has been ((completely) (used) (finished) (emptied))
Don't forget to bring to school (!)
Earn (more) (money) (\$\$) (cash) for your school (!)
Earn (X)(x) Box Top(s)(\$ for Education
Earn (x) bonus BoxTop(s)
Enter this code online at (enter URL here) with code (x) and see if you've won
For (Mom) (Mother) (School) (Teacher) (Classroom)
Free for (your) (class(room)) (and / &) (school)
Get ready for back to school (1)
Get \$x for YOUR school
Get (x) Box Tops for your (school) (classroom)
Go to boxtops4education.com for details
Great value for back to school
(Great)(Perfect)(Essential) for (school) (and / &) (home)
(Give) (back) (more) (\$) (money)(dollars) (to) (your) (school) (and / &) (local) (community) (only) (with) (Lysol)
Helps Mom
(Hey) (Mom(s)) (Teacher(s)) (Be) (Are you) (Ready for) ((back to) school) (the) (cold and/or flu season) (?) (!)
(Hey) (mom) take this to school (!)
(Important) school supply checklist (item) (1)

NOTE: Bracketed information is denoted as: << directive >>, { insert as noted }, (optional text), [required qualifier].
The term "this product" used throughout this document may be replaced with the marketed product brand name.
To use the term "germ" the product must be efficacious against 2 of the 3 major classes of organisms.
The product label must identify the specific bacteria, virus, fungus & mold.
The term (x) is a placeholder that represents a number between 1 and 99.
The term "Y" is a place holder for a character A – Z.

(Key) Back to school shopping list (item) (1)
(Mom(!)) Be ready for back to school (with Lysol®)
More Cash for your school
No more clipping
Official Box Top(s)(\$ for Education Brand
(Over) (\$1,000,000)(\$1MM)(\$1MM+)(X) (donated)(earned)(contributed) (to) (your) (American)(local) (schools)(classrooms)
(with)(via) (BoxTops)
(Proud)(Exclusive)(Partner) (of)(with) (BoxTops)(BTFF) (for) Education)

Scan your receipt
School Supply Pack (1)
School's In. Keep germs (***) out with Lysol®
See how at BTFF.com
See (top)(back) (and / or) (sticker) for (details) (and / or) (rules) (and / or) (instructions)
See details or rules or instructions [on] [back or sticker]
Your teacher(s) love(s) Lysol®
You could win the (x) (golden) Box Tops
Worth (x) eBoxTops™

NO PURCHASE NECESSARY. MANY WILL ENTER AND PLAY, FEW WILL WIN. A PURCHASE WILL NOT INCREASE YOUR CHANCES OF WINNING. OPEN ONLY TO LEGAL RESIDENTS OF THE FIFTY (50) UNITED STATES and D.C. WHO ARE 18 YEARS AND OLDER AT THE TIME OF ENTRY WHO ARE MEMBERS OF BOXTOPS4EDUCATION.COM AND HAVE DESIGNATED A SCHOOL TO SUPPORT AT TIME OF ENTRY. MEMBERSHIP TO BOXTOPS4EDUCATION.COM IS FREE AND AVAILABLE AT WWW.BOXTOPS4EDUCATION.COM. VOID WHERE PROHIBITED. Instant Win Game starts (x/xx/xx) at xx:xx(am)(pm) ET and ends x/xx/xx at xx:xx(am)(pm)ET. For Official Rules, alternate method of entry, prize descriptions and odds disclosure, visit (enter URL here) Sponsor: (General Mills Sales, Inc., One General Mills Blvd, Minneapolis, MN 55440.) (Reckitt Benckiser, Parsippany, NJ 07054-0224)

(Buy) (X)(win)(a) (get)(X)(free) (trip)(prize)(donation)(box)(tops)(donate)(Kinsa®)(KinsaTM)(smart)(digital)(thermometer)
(Apply)(Now) (to) (win)(get)(a)(free) (kinsa®)(Kinsa)(KinsaTM) (smart)(digital)(thermometer(s) (for) (your) (school)(family)
(X) (devices) (available) (to) (schools) (help) (stop) (the) (spread) (of) (illnesses) (at) (yours)(your) (school)(community)
(Get)(Free) (thermometers) (for) (the) (families) (at) (your) (school)
(Our) (FLUency) (program) (applicants) (will) (get) (special) (access) (to) (Kinsa) (insights) (to) (see) (what) (illnesses) (are) (going)
(around) (the) (community)(school)
(One)(X)(Free) (Lysol®)(disinfectant(s))(Lysol)(+)(&)(Kinsa)
(Buy)(X)(for)(home)(and)(X)(For)(School)(Class)(classroom)(teacher)
(Your) (Proud) (partner)(support(er)) (of) (with) (Kinsa®) (Kinsa) (KinsaTM) (smart)(digital)(quickcare)
(thermometer)(thermometers)
(sponsor) (in) (partnership) (with) (Lysol®)
donating) (X)(of) (thermometers) (to) (local) (schools)(communities)(classrooms)(and / &)(families)
(Visit) (lysol.com) (to) (learn) (more) (to) (help) (reduce) (illnesses) (protect) (millions)(hundreds)(thousands) (of) (families)
(Brought) (to) (you) (by) (Lysol®) (and / &) (Kinsa)&(Kinsa(TM)) (FLUency) (program)
(Free)(for)(your)(class)(classroom)(school)
(X)(%)(free)(for)(school)(class)(college)
(Back) (to) (school)(,) (back) (to) (clean)
(X)(+)(X)(Free) (=)(equals) (X)

<< SEASONAL PACKAGE CLAIMS >>

(An) Essential flu season item
Allergen (Control) (Value) (Bonus) Pack (Item) {insert allergen soils – See Appendix 2}
Allergy (Season) (Value) Pack
Be prepared for (cold) (&) flu season
Cold (and) (&) Flu (Value) Pack
Get (Be) ready for (Cold &) Flu Season
(Lysol®) A must have for (Cold &) Flu Season

NOTE: Bracketed information is denoted as: << directive >>, { insert as noted }, (optional text), [required qualifier].
The term "this product" used throughout this document may be replaced with the marketed product brand name.
To use the term "germ" the product must be efficacious against 2 of the 3 major classes of organisms.
The product label must identify the specific bacteria, virus, fungus & mold.
The term (x) is a placeholder that represents a number between 1 and 99.
The term "Y" is a place holder for a character A – Z.

<< MONEY BACK GUARANTEE CLAIMS >>

See the difference in cleaning tough soils or it's free. For purchases made between {insert date} and {insert date}. Refund offer valid is U.S. only and must be postmarked by {insert date}. Limit one refund per person or household. Void where prohibited. Visit {insert website} for full details.

Experience the (cleaning) difference (in) (of) (Dual Action) ({this product}) (for yourself) (or it's free) (or your money back) (guaranteed).

Money back guarantee

Satisfaction guaranteed (or it's free)

See the (cleaning) difference (in) (Lysol® Dual Action) ({this product}) (or it's Free)

Switch and see the (cleaning) difference (challenge) (or your money back) (satisfaction) (guaranteed) (or it's free)

(Take the) Best wipe challenge (see the difference) (or it's free)

Take the (Dual Action) ({this product}) challenge (see the difference) (and experience the cleaning difference) (or it's free)

(You can) (see the difference in) ({this product}) (or it's free)

(You can) See the (cleaning) difference (or it's free)

<< WIPE CONSTRUCTION / SIZE CLAIMS >>

(x) times the size

(x) (times) (bigger) (larger) (than) (a) (your) (our) (regular wipe) (regular cloth)

(x) % (~~larger~~)(~~more~~)(~~durable~~)(~~stronger~~)(~~thicker~~)(~~wetter~~) (wipe) (cloth)⁽⁶⁾⁽⁷⁾

2-in-1 (Wipe) (Wet) (Mopping) (Cloth)

2 Sides (1 for Scrubbing, 1 for Wiping) (Mopping)

2 Sides (1 to Mop) (Scrub), 1 to (Wipe) (Mop) (Scrub)

2 Sides: one traps and locks, one (wipes) (mops)

2 Sides: (scrubbing and wiping) (mopping and scrubbing)

2 Sides: one for daily touch-ups; one for tougher messes

2 Sides: one for everyday touch-ups; one for tougher messes

2 Sides: one for quick cleans; one for sticky messes

2 Sides: one for quick touch-ups; one for sticky messes

2 Sides: one for wiping; one for scrubbing

(2 sides) (one for) (touch-up) (scrubbing) (side) (daily touch-ups) (tougher messes) (mopping)

To trap and lift more⁷ mess(es)

Dual (sided) (texture)

Extra (X-tra) (X-Large) (Large) (Super Size) (Wide) (Long) (Disinfecting) (Dual Action) (XL) (Super) (Jumbo) (Mega) (Giant) (Ultra)

(Premium) (Platinum) (Wipes) (Wet) (Cloths)

(Two) (2) (Sides) (Sided)

A whole new kind of (wipe) (wet) (mopping) (cloth)

All that you expect from your current (wipe) (wet) (mopping) (cloth), plus now you can trap and lock (more) messes

Built-in (Micro) (tough) scrubbing fibers

Built-in Scrubbing Fibers help clean away tough stains (like soap scum) (and) (baked on grease)

(Durable) (and) (super) (absorbent)

Each pre-moistened disposable wipe has a (scrubbing) (abrasive) side for (tough stains) (tough jobs) (like) soap scum and grease and a softer side for wiping away everyday messes.

Extra large wipe for larger messes in your kitchen or bathroom

Feel the strength

(Great) (Designed) (Built) for tough (messes) (cleaning)

(Great) (Designed) (Built) (Tough) (Textured Design) for your toughest messes

{Insert pattern / texture – See Appendix 2} cleans (picks up) (traps) (locks) {insert soils / allergens – See Appendix 2}

Interlocking weave that (traps) (and) (locks) (more) messes. Just wipe and throw away. (It's that easy.)

(Larger) (bigger) (longer) than ever

NOTE: Bracketed information is denoted as: << directive >>, { insert as noted }, (optional text), [required qualifier].
The term "this product" used throughout this document may be replaced with the marketed product brand name.
To use the term "germ" the product must be efficacious against 2 of the 3 major classes of organisms.
The product label must identify the specific bacteria, virus, fungus & mold.
The term (x) is a placeholder that represents a number between 1 and 99.
The term "Y" is a place holder for a character A – Z.

Large (Size) Disinfecting (wet) cloths
Microlock Fibers (fiber) (weave) (grooves) (pattern)
(Mops) (and) (Scrubs) (and) (Wipes)
Non-abrasive
(One) (for daily touch-up) (&) (and) (One) (for tougher messes)
One (patterned) (textured) side of the wipe traps (and) (&) locks (challenging) (more) (messes including) (dirt) (dust)
(crumbs) (and) (even) (hair) (for) (even) (more) (cleaning power)
One side traps and locks (more) (messes), the other side wipes surfaces clean
Perfect Size for (Kitchens) (and) (Bathrooms) (and) (Bedrooms)
Scrubs like a sponge
Scrub(s)
Scrubbing
(Scrubbing) (fibers) (side) for tough messes
(Strong) (durable) (thick) (large) (larger) (tough) (wipe) (wet) (mopping) (cloth) (for) (excellent) (effective) (cleaning)
(performance)
Strong (enough) (so) (you can) clean your (entire) (kitchen) (bathroom) with less wipes
Strong (so) (you can) (pick up more messes) (use it on more surfaces)
Strong (so) (you can)
Strong (wipes) (cloths) are made from a new interlocking weave that trap(s) and lock(s) (residue) (including) (dirt)
(dust) (crumbs) (and) (even) (hair)) (eliminating the frustration of pushing dirt around)
Textured wipe
The other side for wiping your surfaces clean
The strong wipe has a revolutionary dual texture
Thick wipe for touch-up cleaning
Thick(er) (and) (Strong(er)) Wipe⁷
Thick(er) Strong(er) wipe ((versus) (Vs).current Lysol® Brand (II) (x) Disinfecting Wipes)
(Touch-up side) (Scrubbing side)
Tough (wipe) (cloth) (for tough cleaning) (for your tough jobs)
Two-in-One (Wipe) (Cloth)
(Virtually) Lint Free
Wiping
(With) (interlocking) ({insert pattern / texture – See Appendix 2}) (pattern) (for) (cleaning) (performance) (power)
(With) (interlocking) ({insert pattern / texture – See Appendix 2}) (pattern) (that traps and locks more messes)
With Micro-Lock fibers
Wow(!)
(Trap) (and) (Lock) (more⁷) (messes) (grime) (dirt) (residue) ({insert soil from Appendix 2})
(Traps) (and) (Locks) (up to) (X)x (more⁷) (messes) (grime) (dirt) (residue) ({insert soil from Appendix 2})
(X)x more scrubbing power⁷
Designed with scrubbing fibers to clean (x)x (more) {insert soil}⁷
(Thick) (and) (Durable)
Tackle (large) (big) (tough) (cleaning) (jobs) (messes) with just 1 wipe
Scrub(s) without scratching
Tough on messes, gentle on (surfaces) ({insert surface from Appendix 2})
Same Lysol Wipes (that you love), (now) (bigger⁷) (larger⁷) for more⁷ (cleaning)
Same Lysol Wipes (that you love), (now) (bigger⁷) (larger⁷) for (bigger) (larger) (tougher) (jobs) (messes)

<< MARKETING / FORMULATION CLAIMS >>

(Complete Clean) (Disposable) (Easy to use) (Effective) (Everyday cleaner) (Everyday use) (Great) (Household) (Lysol® Brand)
(Pleasant fragrance) (Ready to use) (Revolutionary) (Strong) (Touch-Ups) (Versatile) (Wipe) (Wipes) (Wiping)

(All in one) (All in one Complete) (All Purpose) (Complete) (Dual Action) (Dual Use) (Easy to use) (Everyday) (General Purpose)
(Multi Action) (Multi Clean) (Multi-Purpose) (Multi-Surface) (Multi Use) (Triple Action) (Wipes) (Cloths)

NOTE: Bracketed information is denoted as: << directive >>, { insert as noted }, (optional text), [required qualifier].
The term "this product" used throughout this document may be replaced with the marketed product brand name.
To use the term "germ" the product must be efficacious against 2 of the 3 major classes of organisms.
The product label must identify the specific bacteria, virus, fungus & mold.
The term (x) is a placeholder that represents a number between 1 and 99.
The term "Y" is a place holder for a character A – Z.

(Advanced Cleaning) (Clean) (Cleaner) (Cleaning) (Deodorizes) (Disinfect) (Disinfects) (Disinfectant) (Disinfecting) (Sanitize) (Sanitizer) (Sanitizes) (Sanitizing) (Wet) (Cloth) (Cloths) (Wipe) (Wipes)

(Antibacterial) (Antibacterial Action) (Bactericidal*) (Bactericide*) (Deodorizer) (Deodorizes) (Disinfectant) (Disinfects) (Fungistat) (Fungistatic) (Germicidal**) (Mildewstatic) (Mildewstat) (Sanitizes) (Sanitizer) (Virucidal†) (Virucide†)

(A) (Brighter Outlook) (Fresh Start) (Be) (Happy) (Asana) (Bliss) (Brand New Day) (Bright)(Brighter) (Horizon) (Outlook) (Carnival) (Celebrations) (Feel(ing)) (Positive) (Festival) (Forever) (Free) (Spirit) (Fresh) (Clean) (Scent(s)) (Fiesta) (New) (Beginnings) (Start) (Better) (Hello) (Future) (Tomorrow) (Holiday) (Home) (Sense(s)) (Inspiration(s))(Inspire) (Joy) (Essence) (Kaleido) (Leap Forward) (LifeScent(s)) (Make it Happen) (Mod(Abode)(Home)) (Mosaic) (Ozoo) (Prisma) (Renewal) (Revive) (Samba) (Santosh) (Sunny) (&) (Bright) (TrueColor) (VibraScent(s)) (VivaScent(s)) (Welcome) (Adventure) (Awaits) (Cool) (Reflections) (Energy) (Magic) (Perspectives) (Good) (Feelings) (Jump) (Start)

Dream. Believe. Achieve.

Dream Big

Endless possibilities (!)

Live Laugh Shine

Live The Moment

Rise and Shine

Rise Up

Same (Formula)(Performance)(Product)Scent)(Fragrance)

Specially crafted fragrance to brighten your cleaning experience.

(Say Hello) (Welcome) to a (Brighter Horizon!) (Brand New Day!)

Specially crafted fruity fragrance that reminds you of a warm tropical breeze.

Specially crafted fragrance that embodies (the) fresh invigorating notes of a country breeze.

Specially crafted fragrance (with (hints) (special) (notes) of berries and herbs) (that) (indulges) (reminds) (captures) (you) (with) (the) (of) (with the essence of freshly picked berries in the orchard) (freshly picked berries at a farm) (captures the fresh morning air with hints of freshly picked berries) (you of a walk through the orchard). (Get ready for a Fresh Start!)

0% Bleach

1962 (Classic) (Edition)

(50th) (100th) Anniversary

A clean you can smell

(A) Shining clean you can (see) (trust)

All in one mopping solution

(Also) Try (These) (Our) (Other) Lysol (Products) (Wipes)

American Fragrance Collection / American Collection

American (Edition)(Made)

An efficient way to clean

Anytime (to go)

Best on grease (removal)

(Birthday) (Retro) (Limited) (Special) (Classic) (Gold) (Edition)

Bleach free

Bucketless mopping system

(Fresh) burst of fragrance (and) (that's) (long) (lasting) (freshness)

Cleans as well as a(n) (all purpose) trigger (and a paper towel)

Cleans more surfaces (with just one wipe)

Clean with just a (wipe) (or) (touch)

(Clean) (and) (&) (Disinfect) (in) (with) one swipe

Clean and disinfect on the go

Clear dry formula

Clear drying formula (for Multiple Surfaces)

Contain(s) (no abrasives)

Contains no (Cl) (Chlorine) bleach

Contains (powerful) (effective) (fast) grease cutters

NOTE: Bracketed information is denoted as: << directive >>, { insert as noted }, (optional text), [required qualifier].
The term "this product" used throughout this document may be replaced with the marketed product brand name.
To use the term "germ" the product must be efficacious against 2 of the 3 major classes of organisms.
The product label must identify the specific bacteria, virus, fungus & mold.
The term (x) is a placeholder that represents a number between 1 and 99.
The term "Y" is a place holder for a character A – Z.

Sting

EPA Reg. No.: 777-114

Deep Down Clean!

Delivers a Complete Clean

Disinfection control (formula)

Disinfects (hard non-porous) surfaces

(Does not) (will not) (no) (scratch(ing)) (your surfaces)

(Doesn't) (does not) (create) (leaves) (no) (strong) (harsh) (chemical) (residue) (fumes)

Dry clear (formula)

Dye Free (formula) (wipe) (product)

Effective on multiple hard, non-porous surfaces

(Effective) (cleaning) (disinfecting) (sanitizing) has never been (easy) (easier) (or) (more convenient)

Eliminates the need to push (the) dirt around

Xpress (quick dry) (dry action)(***)

EZ Clear (technology) (formula)

EZ Dry (technology) (formula)

EZ Shine (technology) (formula)

Fast drying formula

(Feel) (See) the difference with (our) (new) {{insert texture from Appendix 2}} (formula)

Fit(s) (in your) (an existing) (a) Lysol Wipes (canister) (Container)

(For) (deep) cleaning

(For) (deep) scrubbing

(For) (deep) scrubbing plus surface cleaning

For a (cleaner)(fresher) (home)(house)

For the holidays

For when a regular (wipe) (cloth) (just) can't get the job done

Free from (Cl) (Chlorine) bleach

(Fresh) (Clean) Scent (!)

Fresh fragrance

From the makers of Lysol Disinfecting Spray

(Gentle Cleaning) Formula (powers through) (eliminates) (cleans) (soap scum) (grime) (bathroom soil) {insert soil from Appendix 2}

Gives (a) (deep) (deeper) (clean) (than a mop)

(Guaranteed) (Lysol) freshness

Heavy (light) duty (jobs)

(Help(s)) (to) make your room Lysol® clean

Helps you finish cleaning (fast) (quickly)

Keep it handy in your (purse) (diaper bag) (gym bag) (glove compartment) (car)

Leaves a fresh (Lemon) (Fresh Waterfall) (Citrus) (Floral) (Herbal) (Green Apple) (fresh) (clean) (scent)

Leaves less streaks than before

Leaves (no residue) (a streak free shine) (a clean surface) (behind)

(Leaves) (virtually) (no) (dull) (film) (sticky) (residue)

Leaves your {insert surfaces / sites – See Appendix 2 and clean

Light scent

Lightly scented

Lighter scent⁷

Look out for our (decorative) (beautiful) (Designer Series) packaging -or- canisters

(Low Streak) (Lower Streak) (Streak free) (No streak) (Formula)

(Lysol), Germ Experts since 1889

(Made)(Assembled)(Produced) (in) (America)(U.S.A) (the) (US)

(Made) (in) (America)(US)(USA) (with) (globally sourced) (international) (ingredients)(materials)

Made with (X%) (Xx) (X times) less plastic⁷

Makes cleaning easier

(Moisture) (Freshness) guaranteed

Mom-tested, Lysol approved(!)

(More) effective at cleaning your challenging everyday messes

(No bottles) (no sponges) (no mess) (No bucket) (necessary)

(No more) (eliminates) pushing dirt around

NOTE: Bracketed information is denoted as: << directive >>, { insert as noted }, (optional text), [required qualifier].
The term "this product" used throughout this document may be replaced with the marketed product brand name.
To use the term "germ" the product must be efficacious against 2 of the 3 major classes of organisms.
The product label must identify the specific bacteria, virus, fungus & mold.
The term (x) is a placeholder that represents a number between 1 and 99.
The term "Y" is a place holder for a character A – Z.

No more (pushing) (scooping) {insert soils – See Appendix 2} (around)!
No rinsing required (after cleaning)
Non-abrasive formula
One wipe, many surfaces
One (canister) (wipe) has more cleaning power than X ((rolls of) paper towel(s)) (wipes(s))
Perfect for your (purse) (diaper bag) (gym bag) (glove compartment) (car)
Phosphate free
Quick and easy (cleaning everywhere)
(Quick) (Fast) (effective) cleaning
Refill (tub) (pack) uses (X%) (X times) (Xx) less plastic⁷
Reinforced with {insert texture from Appendix 2} (strength)
(Scents) (Fragrances) for (every room) (all round) (the) (kitchen) (bathroom) (house) (your home)
Strength⁸ you can (trust) (depend) (rely) (up)on (!)
Simplifies (cleaning) (and) (disinfecting)
Tackles (tough) (stubborn) cleaning jobs
The cleaning power of Lysol®
(This product) is (also) great on the “go” (in {insert sites – See Appendix 2})
Tough cleaning power (for your difficult) (for your most challenging) (stubborn) (messes) (jobs) (stains)
(Virtually) streak free (formula) (!)
(Visible) clean
Works on (large) (small) spills
(Xpress) (rapid) (handy) (quick) (fast) (dry) (drying) (action)
You can see messes sticking to the wipes (– even) (dust) (dirt) (hair) (and) (crumbs)

<< USAGE CLAIMS >>

Also (for) use on (quick clean) floor mops
(Also) Great for (convenience) (floor) (floors) (mops) (mopping) (sweepers)
Appropriate for use on {insert surfaces – See Appendix 2}
Can be used (on) (for) {insert sites / surfaces – See Appendix 2}
(Can be used on) (perfect) (for) large surfaces
Can be used with (Lysol®) Clean-Flip™ Sweeper
Can be used with Swiffer® Sweeper†††
Captures (more⁷) (messes) (grime) (dirt) (germs**) ({insert soil from Appendix 2})
Compatible with {insert surfaces – See Appendix 2}
(Daily)(Everyday) (Cleaner)(Disinfectant)(Disinfecting) (Wipe)
Designed for {insert surfaces – See Appendix 2}
Disinfects and easily cleans (your) (house) (home)
Disinfection and (effortless) (with one hand) cleaning
Easy on surfaces
Effective (disinfecting) (sanitizing) for use in {insert sites – See Appendix 2}
(Effectively) works on (many) (most) (a wide range of) (household) (kitchen) (bathroom) (hard non-porous surfaces)
Fits on (floor) (convenience) (mop) (sweeper) (quick clean) (sweepers) (mops)
(Fits) (Suitable) (Designed) (for) (most) (all) convenience mops
Fits on (Lysol®) Clean-Flip™ Sweeper
Fits on (Lysol®) Clean-Flip™ Sweeper or regular sweeper tools
For (daily)(everyday) (use)(usage) (touch up(s)) (cleaning)(disinfecting)(sanitizing) (all) (around) (in) (the) (home)(house)
For everyday (use) (usage) (touch ups)
(For) general (cleaning) (and) (disinfecting) (sanitizing) (hard non-porous) (non-food contact) surfaces
(For) use in (Kitchen,) (and) (Bathrooms) (and) (Bedrooms)
(For) (use) (in) (your) (the) (babies) (baby's) room
(For) (deep) (scrub(s)(ing)) (and) (surface clean(s)(ing))
For your tough(est) messes
Gentle (for use) (on) {insert sites / surfaces – See Appendix 2}
(Great) (excellent) (for) (quick clean ups) (touch up cleaning)
Great (for) (around) (cleaning) (inside) { insert soils / sites / surfaces – See Appendix 2}
Great for cleaning around the toilet

NOTE: Bracketed information is denoted as: << directive >>, { insert as noted }, (optional text), [required qualifier].
The term “this product” used throughout this document may be replaced with the marketed product brand name.
To use the term “germ” the product must be efficacious against 2 of the 3 major classes of organisms.
The product label must identify the specific bacteria, virus, fungus & mold.
The term (x) is a placeholder that represents a number between 1 and 99.
The term “Y” is a place holder for a character A – Z.

(Great for) cleaning ceiling fan blades
Great for dissolving (tough) spots
(Great for) (inside) (closets) (and) (around) (closet shelving)
(Great) for ({insert soils / sites / surfaces – See Appendix 2})
Great (for) on the go (!)
Great for revealing the natural shine of your floors
(Great for) the top of the fridge
(Great for) tidying up pet areas
Great for (touch-up(s) (cleaning)
Great for use in cars
Great (for) (use) (on) (under) {insert surfaces – See Appendix 2}
Great for use (in) (on) your (kitchen) (bathroom) (bedroom) (living room) (electronics) (and) (throughout) (all over) (the) (house)
{insert surfaces – See Appendix 2}
Great for (use) (in) (your) (dorm room) (class room(s)) (office) (gym) (school) (!)
(Great) (suitable) (to) (for) use (all) (around) (over) (the) (house) (home) (when used as directed)
Handles daily clean-ups with no need for additional sprays, sponges or buckets
Hospital Type (Disinfectant) (Disinfection)
Kind (for use) (on) {insert sites / surfaces – See Appendix 2}
Large strong (wipe) (wet) (mopping) (cloth), (can be used on floors) (and all over the house)
Maximum Cleaning Minimum Effort
Mild (for use) (on) {insert sites / surfaces – See Appendix 2}
Perfect for use on {insert surfaces – See Appendix 2}
Perfect (suitable) (great) for everyday (touch ups) (daily) (use) (cleaning) (all) (around) (the) (house) (home)
Safe (to) (for) use on (the following surface material(s):) {Insert surface materials from Section titled “Surface Types: (~ Non-Medical or Fixture)” on Appendix 2}
Suitable (for) (use) (on) {insert sites / surfaces – See Appendix 2}
Suitable for use on (virtually) (most) (all) (finished floors) (sealed) (surfaces)
(Suitable) (ideal) (made) (perfect) (great) (for) (use) (in) {insert sites – See Appendix 2}
(Suitable) (to give you the freedom) (to) (for) use (the product) (everyday) (and) (all) (around the house)
The (easy) (and) convenient way to (clean) (disinfect) (and) (sanitize) hard non-porous surfaces (anywhere you) travel
The (convenient) (and) easy way to (clean) (and) (disinfect) (sanitize) (the following hard, non-porous) (non-food contact surfaces) (anywhere you travel): {insert sites / surfaces – See Appendix 2}
(This product) (cleans and) (disinfects) (sanitizes) the following surfaces {insert surfaces – See Appendix 2}
(This product) (is) (are) the (easy) (and) (convenient) way to (clean) (and) disinfect (sanitize) (hard non-porous surfaces)
your (household) (kitchen) (bathroom) (bedroom) (floor) surfaces
Try me on ({insert soils / sites / surfaces – See Appendix 2}) (surfaces)
Try (now) (on) (glass) (sealed) (wood) (granite) (stainless steel) ({insert sites / surfaces – See Appendix 2})
Try on (convenience) (sweeper) mops (for) (as) (a) floor(s) cleaner
Try on (Lysol®) Clean-Flip™ (or regular sweeper tools)
{Fits} (on) (Try on) (Suitable) (Designed) (for) (most) Swiffer® Sweeper††
Use (on) (for) ({insert soils / sites / surfaces – See Appendix 2}) (surfaces)
Use (scrubbing) (scrubby) (side) (to) (remove) (tough) (stubborn) (dried-on) (spots) (stains) (and) (foods)
Use (this product) as a(n) (easy) (and) (convenient) way to (clean) (and) disinfect (sanitize) (hard non-porous surfaces)
your (household) (kitchen) (bathroom) (bedroom) surfaces
Use (this product) on (hard, non-porous) surfaces where {insert allergens – See Appendix 2} may be a concern
Use to disinfect (kitchen) (surfaces) (before) (after) (cooking) (preparing) (meals) (dinner)
Use with (Lysol®) Clean-Flip™ Sweeper or regular sweeper tools
Use where you live, work and play
Wipe(s) (up) and trap(s) (more⁷) (messes) (grime) (dirt) ({insert soil from Appendix 2})
Wipe(s) (up), trap(s) and lock(s) (more⁷) (messes) (grime) (dirt) ({insert soil from Appendix 2})

<< Non-Living ALLERGEN CLAIMS (based on cleaning performance) >>

Allergen control††
Controls allergens††

NOTE: Bracketed information is denoted as: << directive >>, { insert as noted }, (optional text), [required qualifier].
The term “this product” used throughout this document may be replaced with the marketed product brand name.
To use the term “germ” the product must be efficacious against 2 of the 3 major classes of organisms.
The product label must identify the specific bacteria, virus, fungus & mold.
The term (x) is a placeholder that represents a number between 1 and 99.
The term “Y” is a place holder for a character A – Z.

Controls common household allergens††
Removes {insert allergens – See Appendix 1}
Removes {insert allergens – See Appendix 1} at the source
Removes allergens (on surfaces) with Lysol® {insert allergens – See Appendix 1}
Removes (more than) 95% of allergens {insert allergens – See Appendix 1}
Removes up to 90% of {insert allergens – See Appendix 1}
Take control over allergens (in your home) with Lysol® {insert allergen – See Appendix 1}
(This product) (Even) (Removes), (Traps), (Locks in), (Captures), (Picks Up) (up to) (90%) (of) (the following) (common household) allergens(††): {insert allergens – See Appendix 1} (found in) (associated with) (debris) (dirt) (dust) (lint) (on) (hard, non-porous) (surfaces).
(This product) (Quickly) (Removes) (Traps) (Locks in) (Captures) (Picks up) (debris) (dust) (dirt) (lint) (that) (may) (contain(s)) (harbor(s)) (the following) (common household) allergen(s) (††): {insert allergens – See Appendix 1} (on) (from) (hard, non-porous) (surfaces).
(This product) removes (90% of) the following allergens: dust mite debris, pet dander and pollen particles (from) (timothy grass) (non-porous hard surfaces).
(This product) removes the following allergens: {insert allergens – See Appendix 1} (from surfaces)

<< CLEANING / DEODORIZING CLAIMS >>

((2)(3)(4)(5)(X)) (the) (Cleaning Power⁷) (: (Thicker), (Stronger) (Longer lasting) (More cleaning solution) (Scrubby texture)
(2) (3) (4) (5) (X) (the) (everyday) cleaning power
(2) (3) (4) (5) (X) cleaning power (This product) has the cleaning power to remove {insert soils – See Appendix 2}
(2) (3) (4) (5) (X) (the) (clean) (cleaning) (strength)
(2) (3) (4) (5) (X) 3X Cleaning Power vs. (Lysol® All Purpose Cleaner with Bleach) ({777-83 Product Name})
3X (Continuous Clean) (Dirt Blaster) (Stain Blaster) (Stain Lifter)
4X Cleaning Power
4X (the) Cleaning Power on grease, baked on cheese, baked on greasy soil (and) (&) soap scum
(X) actions in one swipe (wipe): (Sanitize), (Disinfect), (Clean), ((Remove) (Break down) (more⁷) (messes) (grime) (dirt) (germs**) (insert soil)⁹
(10) (Z) X CLEANING ACTIONS™ <<where Z is a number between 1 and 10. For example 10X CLEANING ACTIONS™>>
(x%) More Surface (Cleaning) (and) (Disinfection)⁷
(x%) More Surface Protection⁷
(x%) (Stronger)(Thicker) Wipe⁽⁷⁾⁽¹²⁾
(x%) More Absorption⁽⁷⁾⁽¹²⁾
(0%) (Free from) (No) Bleach[^]
(A(n)) (Even) (Better⁷) (Great) (Easy) (Everyday) Cleaner
Active Lift Technology to (trap) (lock) (&) (and) lift more⁷ mess(es) (!)
(Active) Lift Cleaning (Technology)⁷
Better Grease Cutting⁷
Breaks apart tough and dried up messes
Cleans (deodorizes) (disinfects) (eliminates odors)
Cleans and disinfects (surfaces) (in) (one) (wipe) (swipe)
Clean with (just) (one) (1) wipe
Clean (even) more -or- multiple surfaces⁷ with (this)(wipe(s)) (product)
Clean more, use less (!)⁶
Cleans (X) (faster)(More) (dirt)(grime)(food)(baked on)(grease)(Stains)(Surfaces) (better) ({insert soil})⁽⁶⁾⁽⁷⁾⁽¹²⁾
(Cleans) (X) ((%))(times) (Better)⁽⁶⁾⁽⁷⁾⁽¹²⁾
(Cleans) (dissolves) (soap scum) (and) (baked on grease)
Cleans (even) (bigger) (tougher) (more) (stubborn) messes
(Cleans) (removes) (tough) (grimy) (bathroom) (kitchen) (floor) messes (with little effort) (with little muscle power)
(within seconds) (within minutes)
Cleans the same space in much less time than (a) (your) regular (wipe) (cloth)
Cleans to a (sparkling) (shine)
Clean(s) with the power of Lysol® Brand Products

NOTE: Bracketed information is denoted as: << directive >>, { insert as noted }, (optional text), [required qualifier].
The term “this product” used throughout this document may be replaced with the marketed product brand name.
To use the term “germ” the product must be efficacious against 2 of the 3 major classes of organisms.
The product label must identify the specific bacteria, virus, fungus & mold.
The term (x) is a placeholder that represents a number between 1 and 99.
The term “Y” is a place holder for a character A – Z.

Cuts cleaning time
Cuts {insert soils – See Appendix 2}
Cuts grease (and grime)
Cuts Grease, Lifts Messes
(Cuts Grease) (and) (Lifts Messes)
(Designed)(Great) for eliminating (odors)(odor-causing bacteria) (at the source)
(Deodorizes)(Neutralizes) by (removing) (odors)(odor-causing bacteria) (at the source)
Deodorizes (and sanitizes) as it cleans
Dissolves {insert soils – See Appendix 2}
Dotted pattern (to) (Trap) (and) (Lift) (Lock) (More)⁷
Each (textured) (quilted) wipe (cleans as much as) (lasts longer than) (X) (regular) (Original) Lysol Disinfecting Wipes
Each wipe cleans as much (mess) as a spray cleaner and X paper towels
(Easily) Lifts away dirt, dust and debris (from {insert surface from Appendix 2})
Effectively cleans everyday messes
Eliminates (Removes) (kitchen) (and) (bathroom) odors
(Eliminates)(Destroys)(Neutralizes)(Removes) odors (in)(for up to) (X) (hours)(at the source)(days)(seconds) (faster)⁽⁶⁾⁽⁷⁾
Everything (you need) is already in the wipe
(Fast) Drying Formula
(Formulated to) Dissolve(s) and pick(s) up tough messes
Freshens {insert sites – See Appendix 2}
Gets up stuck-on messes
(Heavy) (duty)(power) (stain) (remover)(destroyer) (tough) (non-bleach) (pro) (fighter)(eliminator)
Helps clean (away) (tough stains) (like) {insert soils – See Appendix 2}
(Helps) eliminate odor-causing bacteria
(Help(s)) Stop(s) (the) spread(ing) of (germs**) (99.9% of) (viruses) (and) (bacteria)
{insert soils – See Appendix 2} disappear(s) (in a flash)
Leaves (household) (bathroom) (restroom) surfaces sanitary
(Lock) (&) (Trap) (and) (Lift) (Technology) (to) (trap) (&) (and) (lift) (more)⁷ (mess(es)) (!)
Longer Lasting Wipe⁷
Max Strength (wipe) ⁽⁷⁾⁽¹²⁾
Max Thickness⁷
(New) ((X)x) (%) (times) (more) (better) (Improved) (Deeper) (Enhanced) (Stronger) (Tougher) (Thicker) (Advanced) (Defined)
(absorbent) (Textured) (layered) (Dirt-lifting) (Dirt-catching) (Dirt-vacuuming) (Dirt-sealing) (Dirt-trapping) (Dirt-busting) (Mess-
lifting) (Mess-catching) (Mess-vacuuming) (Mess-sealing) (Mess-trapping) (Mess-busting) (Vacuum-pockets) (pockets)
(honeycomb) (texture) (pattern) (wipe(s)) (to) (scrub(s)) (.) (last(s)) (use(s)) (longer) (clean(s)) (cleaning) (power(s) through)
(pick(s) up) (capture(s)) (trap(s)) (lift(s)) (absorb(s)) ((X)x) (%) (time(s)) (x) (more) (weight) (mess(es)) (dirt) (grease) (better)
(faster) (as) (it(s)) (better) (to be as strong as) (than) (a) (cloth) ^{(6) (12)}
No Bleach[^] Harshness
(Odor)(Malodor) (elimination)(control) technology
(One) (1) wipe (can be) used to clean messes
One swipe and {insert soil / allergens – See Appendix 2} (is) (are) gone!
Our Best (Ever) Wipe ⁽⁷⁾
Our Best Clean⁷ (Ever) (!)
Picks up (dirt) (crumbs) (and even) (hair)
Picks Up (Dirt) (Dust) (and) (Hair)
Powerful clean(er)
Powerful (fast acting) (effective) (degreaser) (cleaner)
(Powers through) (cleans) (traps) (messes) (soap scum) (soils) (stains)
(Powers thru) (cuts thru) (hard) (stuck on) (sticky) (built up) ({insert soil})
(Quilted) (Textured) (Pattern) (Wipe) (to) (Trap) (Lock) (and) (Lift) (Pick Up) (More)⁷ (Dirt) (Messes) (Mess)
(Reduces) (Less) scrubbing (needed)
Removes (and cleans): {insert soils – See Appendix 2}
Saves time
Scrub(s) away {insert soil}
Stronger cleaning Wipe⁽⁷⁾⁽¹²⁾
Suitable to use on (Sealed Granite) (and) (Finished Wood) (and) (Stainless Steel)

NOTE: Bracketed information is denoted as: << directive >>, { insert as noted }, (optional text), [required qualifier].
The term “this product” used throughout this document may be replaced with the marketed product brand name.
To use the term “germ” the product must be efficacious against 2 of the 3 major classes of organisms.
The product label must identify the specific bacteria, virus, fungus & mold.
The term (x) is a placeholder that represents a number between 1 and 99.
The term “Y” is a place holder for a character A – Z.

Swipe(s) away {insert soils / allergens – See Appendix 2} (in seconds) (with no effort)
(The) Cleaning Power of Lysol (in a Wipe)
(This product) has 4X Cleaning Power to remove grease, baked on cheese, baked on greasy soil (and) (&) soap scum
This product has the cleaning power to remove {insert soils – See Appendix 2}
(X) times (x) more coverage than (regular) (current) (Lysol® Brand II Disinfecting Wipes) ({insert Lysol® brand name})
Time (saver) (saving)
Tough on grime
Tough on (kitchen) messes
Tough stains like scuff marks
(Traps) (and) (Dissolves) Challenging Messes
(Traps) (and) (Lifts) (Dirt) (Dust) (and) (Hair)
Trap (&) (and) (N) Locks fibres to pick up debris while powering through tough messes
Traps and Dissolves (your) (most) challenging messes
Traps (&) (and) Locks (dirt) (dust) (crumbs) (hair) (fibers)
Traps (and) (N) Locks (dirt) (dust) (&) (hair)
Traps (& Locks) (More) (Messes)(,) (even) (dirt) (dust) (crumbs) (hair)
Traps (&) (and) Locks (more) particles of (dirt) (dust) (messes) (crumbs) (hair)
Trap(s) and Lift(s) (more) Dirt⁷
(Traps) (locks) (picks up) (cleans) (wipes off) {insert soils / allergens – See Appendix 2}
(Unbeatable) (Dirt) Lifting⁷
(Unbeatable) Grease Cutting⁷
Versatile wipes clean multiple surfaces (like {insert surfaces from Appendix 2})
Wipe(s) away {insert soils / allergens – See Appendix 2} (in seconds) (with no effort)

<< SANITIZATION CLAIMS >>

(10) (second) (Quick) (Fast) (acting) sanitization***
(10) seconds is all it takes to kill 99.9% of bacteria***
99.9% of bacteria*** killed (in) (10) (seconds) (quick)
An effective (fast acting) (quick) non-food contact surface sanitizer*** (for use (in) (on) {insert use/surface – See Appendix 1})
(And even) (kills) (eliminates) 99.9% of (Listeria**) (insert organisms – See Appendix 1) (Strep**) in 10 seconds***
(And even) (kills) (eliminates) 99.999% of (Enterobacter aerogenes) (and) (Staphylococcus aureus) (insert organisms – See Appendix 1) in 30 seconds⁽⁴⁾
(Now) Approved to kill(s) 99.9% of bacteria*** (X)(x) (X%) faster⁽⁶⁾ (vs. previous Lysol® Brand II Disinfectant Wipe) ({insert Lysol® brand name}) (than ever before)
Approved to sanitize*** (2)(3)(x) faster (vs. previous Lysol® Brand II Disinfectant Wipe) ({insert Lysol® brand name}) (than ever before)
Great for use as a (quick) (fast) non-food contact surface sanitizer*** (in) (on) ({insert use site/surface – See Appendix 2})
Kills 99.999% of bacteria⁴
Kills 99.999% of (household) bacteria in 30 seconds⁴
Kill(s) (99.9%) (of) (household) bacteria (in) (10) (seconds) (quickly) (fast) ***
Kill(s) 99.9% of bacteria*** (X)(x) faster⁽⁶⁾ (vs. previous Lysol® Brand II Disinfectant Wipe) ({insert Lysol® brand name}) (than ever before)
Kill(s) (Eliminates) 99.9% of E.coli O157:H7 in 30 seconds
Kill(s) (Eliminates) 99.9% of bacteria*** (quickly)
Kill(s) (Eliminates) 99.9% of bacteria on hard, non-porous surfaces in (10) seconds***
Kill(s) (Eliminates) 99.999% of bacteria on hard, non-porous surfaces in 30 seconds⁴
Kill(s) (Eliminates) bacteria on hard, non-porous surfaces in seconds***
Kill(s) bacteria*** (X)(x) faster (vs. previous Lysol® Brand II Disinfectant Wipe) ({insert Lysol® brand name}) (than ever before)
(Now) Kills bacteria*** in (10) seconds
(Quickly) Kills 99.9% of bacteria***
Sanitizes (Kitchen) (household) (bathroom) hard non-porous surfaces in (10) seconds *** (30) seconds ⁽⁴⁾
Sanitizes (Kitchen) (household) (bathroom) (surfaces) in (10) seconds *** (30) seconds ⁽⁴⁾

<< DISINFECTION CLAIMS – See Appendix 1 for (*) () (†) ⁽²⁾ ⁽³⁾ ⁽⁵⁾ ⁽⁶⁾ claim qualifiers >>**

NOTE: Bracketed information is denoted as: << directive >>, { insert as noted }, (optional text), [required qualifier].
The term “this product” used throughout this document may be replaced with the marketed product brand name.
To use the term “germ” the product must be efficacious against 2 of the 3 major classes of organisms.
The product label must identify the specific bacteria, virus, fungus & mold.
The term (x) is a placeholder that represents a number between 1 and 99.
The term “Y” is a placeholder for a character A – Z.

(Now) (Approved to) (Kill(s)) (over) (XX) (#) (number of) (germs**) including (E. Coli) (Salmonella**.) (Rotavirus) ({insert organisms – see Appendix 1) and many other listed (germs**) (bacteria) (viruses) (fungi): {insert organisms – See Appendix 1}

Cold (and) (&) Flu Virus Control⁽²⁾

(Controls) (and) (prevents build up of) (prevents) (inhibits) mold and mildew (in damp and musty places)

Controls (the) Flu Virus ⁽²⁾

Controls the growth of fungi (for up to) (in) (7 days)

Daily defence against (germs**) ({insert organisms – See Appendix 1)

Disinfects and cleans (tough) (stubborn) stains

Disinfects hard non-porous non-food contact surfaces ({insert sites / surfaces – See Appendix 2})

Disinfects more surface area (per wipe)

Disinfects (your) ({insert sites – See Appendix 2}) (and) (or) ({insert surfaces – See Appendix 2})

Disinfect (your cart) (before you shop)

Each pre-moistened, disposable (wet) (cloth) (wipe) (is treated with a special cleaner) (that actually), kills germs** (even the bacteria that cause odors) (wherever you use it)

Effective against (bacteria) (viruses) (germs): {insert organisms – See Appendix 1}

Effective against (the) Cold Virus ⁽³⁾

Effective against (the) Cold (and/ &) (flu) Virus(es) ⁽³⁾

Effective against (the) Flu Virus(es) ⁽³⁾

Eliminates (Removes) (bacteria*)⁽⁵⁾ (viruses†) (germs**) from {insert surfaces – See Appendix 2}

Fights the Flu Virus ⁽²⁾

Flu Virus Control ⁽²⁾

Germ (killer) (destroyer) (eliminator) **

Germ kill **

(Help) kill (germs**) (bacteria**) (viruses**) with (in one (swipe) (wipe))⁹

Kill(s) (2)(3)(X(x)) (X%) (more) antibiotic resistant bacteria⁽⁶⁾ (vs. previous Lysol® Brand II Disinfectant Wipe) ({insert Lysol® brand name}) (than ever before)

Kill(s) (X(x)) (X%) (more) (bacteria) (viruses)⁽⁶⁾

Kill(s) viruses including the following listed (organisms): (Coronavirus SARS-CoV) (and) (Herpes Simplex Virus Type 1) (Herpes Simplex Virus Type 2) (Human Coronavirus) (Influenza A H5N1 Avian) ((Pandemic) Influenza A Virus [H1N1]) Respiratory Syncytial Virus (RSV)) ((Swine) Influenza A Virus (X(x)) (X%) faster⁽⁶⁾

Kill(s) 99.9% of bacteria and viruses**

Kill(s) 99.9% of viruses and bacteria**

Kill(s) {insert organisms – See Appendix 1}

Kill(s) antibiotic resistant bacteria including the following listed (organisms): (Klebsiella pneumoniae – NDM-1 – positive) (and) (Escherichia coli with extended beta-lactamase resistance (ESBL) (Multi-Drug Resistance Acinetobacter baumannii (MDR)), (Multi-Drug Resistance Enterobacter aerogenes (MDR)) (Carbapenem resistant Klebsiella pneumonia) ((Hospital Associated) Methicillin Resistant Staphylococcus aureus (MRSA))

Kill(s) antibiotic resistant bacteria*

Kill(s) (X) (%) (more) (kinds) (of) germs**⁽⁶⁾ (than ever before) (vs. previous Lysol® Brand II Disinfectant Wipe) ({insert Lysol® brand name})

Kill(s) (bacteria*)⁽⁵⁾ (viruses†) (and) (germs**) ** (and) (while) (it) clean(s) tough (bathroom) messes.

Kill(s) (the) cold & flu viruses, including Virus(es) ⁽³⁾

(Kill(s)) (Effective against) (Controls) cold (and) (&) flu viruses ⁽³⁾

(Kill(s)) (99.9%) (of) (Effective against) (the) (cold and flu) (flu) (cold) (viruses) ⁽³⁾

(Kill(s)) Effective against viruses that (can) cause (the cold) (colds and flu) (flu) (colds) ⁽³⁾

Kill(s) (Eliminates) 99.9% of (Flu Virus ⁽²⁾) (Influenza A Virus) (Influenza**) (Salmonella**) (Staph**) ({insert organisms – See Appendix 1})

Kill(s) (Eliminates) 99.9% of germs** (on hard, non-porous surfaces)

Kill(s) (Eliminates) (Disinfects) (kitchen) (bathroom) (living room) (bedroom) (common) (household) (bacteria*)⁽⁵⁾ (viruses†) (germs**)

Kill(s) germs** (2) (X) faster (vs. previous Lysol® Brand II Disinfectant Wipe) ({insert Lysol® brand name}) (than ever before)

Kill(s) germs** (X) (%) faster (vs. previous Lysol® Brand II Disinfectant Wipe) ({insert Lysol® brand name}) (than ever before)

Kill(s) germs** faster than ever before (vs. previous Lysol® Brand II Disinfectant Wipe) ({insert Lysol® brand name})

NOTE: Bracketed information is denoted as: << directive >>, { insert as noted }, (optional text), [required qualifier].
The term “this product” used throughout this document may be replaced with the marketed product brand name.
To use the term “germ” the product must be efficacious against 2 of the 3 major classes of organisms.
The product label must identify the specific bacteria, virus, fungus & mold.
The term (x) is a placeholder that represents a number between 1 and 99.
The term “Y” is a place holder for a character A – Z.

Kill(s) (germs**) (bacteria(*)⁽⁵⁾) (viruses†) (you can't see): (Flu Virus⁽²⁾) (Staph**)
Kill(s) germs** (in) (the) ({insert sites – See Appendix 1})
Kill(s) germs** that ordinary cleaners don't
Kill(s) germs** while it cleans.
Kill(s) (H1N1) (SARS) (Virus) ⁽³⁾
Kill(s) (Avian) Influenza A ([H5N1]) Virus on environmental hard, non-porous surfaces
Kill(s) Influenza A Virus (Strain New Caledonia/20/99) (Flu Virus†) in ten (10) minutes.
Kill(s) the (Influenza) (flu) virus†
Kills 99.9% of germs** including 9 Cold & Flu Viruses¹⁰
Kills 9 Cold and Flu Viruses¹⁰
Kill(s) (99.9%) (of) (kitchen) (bathroom) (bedroom) (living room) Germs** (in 4 minutes)
Kill(s) more than 99.9% of (bacteria and viruses**) (viruses and bacteria**)
Kill(s) odor-causing bacteria(*)⁽⁵⁾ ([at the source](#))
Kill(s) (over) (x) (kinds of) (germs**) (viruses) (and) (&) (bacteria)
Kill(s) (Salmonella enterica (Salmonella)), the bacteria that (can) (may) cause(s) food poisoning
Kills (Salmonella**) (E. coli**) (HA-MRSA**) (MRSA**) (RSV**)(†)⁽¹¹⁾
Kill(s) (Staphylococcus aureus (Staph)) the bacteria that (can) (may) cause skin infections like impetigo
Lysol Brand Disinfectant products aid in the reduction of cross-contamination of germs** (on hard, non-porous surfaces)
(Now) (Also) (Even) Kill(s) (Antibiotic Resistant) Bacteria*
(Now) (Also) (Even) Kill(s) (Antibiotic Resistant) Bacteria including the following listed (organisms) (Klebsiellapneumoniae – NDM-1 – positive) (and)(Escherichia coli with extended beta-lactamase resistance (ESBL)) (Multi-Drug Resistance Acinetobacter baumannii (MDR)), (Multi-Drug Resistance Enterobacter aerogenes (MDR)) (Carbapenem resistant Klebsiella pneumonia) ((Hospital Associated) Methicillin Resistant Staphylococcus aureus (MRSA))
(Now) (Also) (Even) Kill(s) Cold & Flu Viruses† and Antibiotic Resistant Bacteria*
On hard, non-porous, inanimate environmental surfaces this product kills the following (bacteria) (viruses) (germs):
{insert organisms – See Appendix 1}
One step (clean) (and) (Disinfecting) (Sanitizing)
(Overall) disinfection in 4 minutes**(!)
(Removes) (bacteria(*)⁽⁵⁾) (viruses†) (germs**) ({insert organisms – See Appendix 1})
(This product) is (a) (mildewstatic) (mildewstat) and will effectively (inhibit) (prevent) the growth of (mold and) mildew on hard, non-porous surfaces.
(This product) kills (the following viruses): (Human Immunodeficiency Virus Type 1) (on hard, non-porous surfaces in (30) seconds.
(This product) meets efficacy standards for (hospital type) (disinfectant wipes) (sanitizing wipes)
(This product) kills {insert organisms – See Appendix 1} (on hard, non-porous surfaces) (in (4) (or) (10) minutes)
Tough on Germs**
Use them (on kitchen counters) before and after cooking to kill (common) (bacteria(*)⁽⁵⁾) (viruses†) (germs**)
Use (them) (this product) on surfaces ({insert sites / surfaces – See Appendix 2}) (where (bacteria(*)⁽⁵⁾) (viruses†) (germs**) may be a concern.)
Virus (killer) (destroyer) (eliminator) †
Wipe down commonly touched surfaces around the (kitchen) (bathroom) (bedroom) (such as) ({insert sites / surfaces – See Appendix 2}) to kill (bacteria(*)⁽⁵⁾) (viruses†) (germs**) (throughout the house)
[\(Works\) \(Effective\) at \(1st\)\(first\) pass \(no effort\) \(cleans\) \(as\) \(it\) \(and / &\) \(disinfects\)](#)

<< Additional CLAIMS – Specific to Sweeper type products >>

Fits leading sweeper products
Use with (Lysol®) (Clean-Flip™) Sweeper or regular sweeper tools

<< STARTER KIT CLAIMS >>

Contents: (#) Sweeper
(#) Wet (Mopping) Cloths
(#) Dry (Sweeping) Cloths

NOTE: Bracketed information is denoted as: << directive >>, { insert as noted }, (optional text), [required qualifier].
The term "this product" used throughout this document may be replaced with the marketed product brand name.
To use the term "germ" the product must be efficacious against 2 of the 3 major classes of organisms.
The product label must identify the specific bacteria, virus, fungus & mold.
The term (x) is a placeholder that represents a number between 1 and 99.
The term "Y" is a place holder for a character A – Z.

Includes: (Brand/Sub-brand/Product Name) Mop, (2) Wet Mopping Cloths (wipes) and (2) Dry Mopping Cloths (wipes)

\$X in (Lysol®) refill coupons inside
Coupons inside

Assemble ((4)-piece mop)
(Attach (cloth to mopping head)) (Clean) (Toss)
(Brand/Sub-brand/Product Name) Dry (Mopping) (cloths) (wipes) refills (are available) (separately)
(Brand/Sub-brand/Product Name) Wet (Mopping) (cloths) (wipes) refills (are available) (separately)
Refills for (Brand/Sub-brand/Product Name) Wet (Mopping) (cloths) (wipes) and (Brand/Sub-brand/Product Name)
Dry (Mopping) (cloths) (wipes) (are available) (separately)

2-in-1 Starter Kit
(Lysol®) (Sub-brand/Product Name) (Mopping) Kit
Starter (Mopping) Kit
Sweeping & Mopping Starter Kit

X% (more) (bigger) (surface) (cleaning) (power) (area) (than the leading sweeper product)
Can also be used with regular wet and dry sweeper refills
Cleans the floor and baseboard simultaneously
Dry (Mopping) Cloths (wipes) pick up dust, dirt and hair. (Deep ridges and grooves trap and lock it in.)
(Dry) (Wet) (Sweeping) (Mopping) Cloths
(Flaps) Flip(s) up (to clean) (corners) (and) (baseboards)
(Flaps) Flip(s) up to get into hard to reach areas
Flip mechanism for small spaces & baseboards
For a complete clean, try Lysol® Wet and Dry Cloths
(For) (deep) corner and baseboard cleaning
(For) (quick) (easy) Assembly
For sweeping and (&) mopping
Gets into corners (and small spaces) easily
Lysol® Dry Cloths – Picks up dust, dirt & hair!
Lysol® Wet Cloths – Cleans as it disinfects!
(No-touch) easy attachment of cloth (wipe) (to mop)
Push (activation) slide (in) (one) (direction) to (raise) (engage) flaps
Push (activation) slide (in) (other) (opposite) (direction) to (disengage) (lower flaps)
Use (the) (Brand/Sub-brand/Product Name) wet (mopping) cloths (wipes) to clean as directed
Use(s) 100% of the surface of the cloth (sheet) when used with (Clean-Flip™) (Brand Name) mop
Uses the whole cloth
Use(s) the whole surface of the cloth (or sheet) when used with (Clean-Flip™) (Brand Name) mop
Usage Instructions: (1) Attach (2) Clean (3) Toss

This Lysol® cleaning tool contains an antimicrobial agent built in during manufacturing that won't wear off over time, to provide continuous product protection against the growth of odor-causing bacteria

<< USE DIRECTIONS >>

DIRECTIONS FOR USE: It is a violation of Federal law to use this product in a manner inconsistent with its labeling.

<< FOR CANISTER PACKAGING >>

To Open Package: Open cap lid and pull up firmly on lid to remove the entire cap from the canister. (Remove seal.) Locate wipe at the center of the roll and insert corner of wipe through opening in lid. **DO NOT PUSH FINGER THROUGH OPENING.** Replace lid. Pull sheet up and slightly to side. Always snap lid securely shut between uses to prevent moisture loss.

NOTE: Bracketed information is denoted as: << directive >>, { insert as noted }, (optional text), [required qualifier].
The term "this product" used throughout this document may be replaced with the marketed product brand name.
To use the term "germ" the product must be efficacious against 2 of the 3 major classes of organisms.
The product label must identify the specific bacteria, virus, fungus & mold.
The term (x) is a placeholder that represents a number between 1 and 99.
The term "Y" is a place holder for a character A – Z.

To Open Package: Pull up tab and remove large cover. Remove inner tab loop from cover hinge. Insert loop into opening. Thread first sheet in center of roll through loop. Replace cover. Pull loop back through opening. Pull each sheet up and slightly to the side. Always snap lid securely shut between uses to prevent moisture loss.

To Open Package: Open cap lid. Pull up wipe (from center of the roll) and slide corner of wipe into smaller opening. Pull wipe up (and slightly to the side) to (remove) (use) (start). (After use,) snap lid securely shut (between uses) to prevent moisture loss.

To Open Package: Open cap lid. (Press)(Tear) seal at perforation (to remove). (Pull out)(Thread) wipe through dispensing (lid) (hole) and pull wipe up (and slightly) (downwards) (to the side) to (remove) (start) (begin) (use). (Do not push finger through opening.) (Next wipe pops up automatically.) (After use) snap lid securely shut (between uses) to prevent moisture loss.

<< FOR POUCH PACKAGING >>

To Open Package: Peel back the front label slowly. Remove towelette (wet) (mopping) (cloth) (as needed) (and reseal pouch to avoid moisture loss). Reseal pouch by firmly running thumb over the label. Throw away soiled (wipe) (wet) (mopping) (cloth) when done.

To Open Package: Open (closure)(lid)(pouch) (and) (by peeling back)(remove) the seal. Remove one (towelette) (wipe) (wet) (mopping) (cloth) (this product) and (close)(reseal) (lid)(pouch) to avoid moisture loss. (Use abrasive side for tougher soils and soft side for light duty cleaning.) (Throw away soiled wipe when done.)

<< FOR REFILL PACKAGING >>

To Open Refill Package: Open (bag) (pouch) (box) (container) (package). Place (wipes) (wet) (mopping) (cloths) in (refill) (x count) canister. Do not use (wet) (mopping) (cloths) (wipes) in this refill package.

To Refill: Remove the entire cap from the canister. Place refill (wipes) (cloths) in canister.

To Refill:

- 1) (Gently) (remove) (pop) (peel) (cut) (off) the (lid) (foil) (seal) from the (top of the) (refill) (canister) (pack) (pouch)
- 2) Dispose (off) (foil) (seal) (lid) (pouch) (in) (garbage) (/) (trash) (can).
- 3) (Open) (dispenser) (Remove) (lid) (cap) (from) (existing) (75) (or) (80) (count) (Lysol) (Disinfecting wipes Canister).
- 4) (Insert) (Place) (refill) (roll) (canister) (pack) (pouch) (in) (on) (to) (existing) (empty) (75) (or) (80 count) (canister) (dispenser).
- 5) Locate wipe (end) (at the center of the roll) (and) (insert corner) (thread) (of)(the wipe) (through opening) (in lid).
- 6) (Close lid) (and use)

<< USE DIRECTIONS – FOR ALL PACKAGING TYPES (Except Convenience Mop)>>

(To Clean (hard, non-porous surfaces) (floors) (/ Deodorize) (/ Remove Allergens††): Use fresh (wipe) (wet) (mopping) (cloth) on surface. Repeat for stubborn stains.)

To Sanitize / Disinfect (on hard non-porous surfaces and semi critical medical device or medical equipment surfaces): Pre-clean surface. Use enough fresh (wipes) (wet) (cloths) to thoroughly wet surface. Surface must remain wet for the entire contact time. **To Sanitize:** Allow to remain wet for (10) (or) (30) seconds. **To Disinfect:** Allow to remain wet for (4) (or) (10) minutes. Allow surface to air dry. Toss dirty wipe away. (Rinse all food contact surfaces and toys with water after use.)

†††**For surfaces that come in contact with food:** Use only on hard, non-porous surfaces and rinse thoroughly with water.

To Disinfect Toys: Use only on hard, non-porous surfaces and rinse thoroughly with water after use.

NOTE: Bracketed information is denoted as: << directive >>, { insert as noted }, (optional text), [required qualifier].
The term “this product” used throughout this document may be replaced with the marketed product brand name.
To use the term “germ” the product must be efficacious against 2 of the 3 major classes of organisms.
The product label must identify the specific bacteria, virus, fungus & mold.
The term (x) is a placeholder that represents a number between 1 and 99.
The term “Y” is a place holder for a character A – Z.

Rinse (child / baby) plastic toys, (child / baby) hard, non-porous surfaces and all food contact surfaces with potable water or a damp cloth after use.

<< USE DIRECTIONS – continued >>

To Prevent the Growth of Mold and Mildew (and their odors): Pre-clean hard, non-porous surfaces. Wipe surface and allow to remain wet for 3 minutes. Allow surface(s) to air dry. Repeat applications in weekly intervals or when mold and mildew growth appears.

<< FOR CONVENIENCE MOP >>

To use with (convenience) (quick clean) (mop) (sweeper):

1. Fix (wipe) (wet) (mopping) (cloth) (around) (on) (convenience) (quick clean) (mop) (sweeper).
2. Use (quick clean) (sweeper) (mop) (with) (wipe) (wet) (mopping) (cloth) to clean (the) floor.

<< ADVISORY STATEMENTS >>

Do not use (this product) on dishes, glasses, or utensils.
Do not flush (in toilet).
Do not use as a diaper wipe
Do not use on unfinished, oiled or waxed wood, unsealed tiles or carpet.
Do not leave this product on stainless steel surfaces to dry for more than one hour.
For food contact surfaces rinse with clean potable water after using this product.
For other surfaces, spot test in an inconspicuous area.
Not (intended) for personal hygiene (or as a diaper wipe)
Not recommended for (bare) (unpainted) (wood) (or) (natural) (marble) (surfaces).
Unplug small electrical appliances before (use) (cleaning) (disinfecting) (with this product).
Will not harm (your) (septic tanks) (or) (plumbing)

<< Additional USE DIRECTIONS / ADVISORY STATEMENT – Specific to Professional Branded products Only >>

<< HUMAN IMMUNODEFICIENCY VIRUS TYPE 1 [HIV-1 AIDS Virus] (Hepatitis B Virus (HBV)), (and Hepatitis C Virus (HCV)) >>

(§§)KILLS HUMAN IMMUNODEFICIENCY VIRUS TYPE 1 [HIV-1 AIDS Virus] (Hepatitis B Virus (HBV)) (Hepatitis C Virus (HCV)) ON PRE-CLEANED ENVIRONMENTAL SURFACES / OBJECTS PREVIOUSLY SOILED WITH BLOOD / BODY FLUIDS, in health care settings or other settings in which there is an expected likelihood of soiling of inanimate surfaces / objects with blood or body fluids; and in which the surfaces / objects likely to be soiled with blood or body fluids can be associated with the potential for transmission of HIV-1 [associated with AIDS], (Hepatitis B Virus (HBV)), (and Hepatitis C Virus (HCV)).

SPECIAL INSTRUCTIONS FOR CLEANING AND DECONTAMINATION AGAINST HIV-1 ON SURFACES / OBJECTS SOILED WITH BLOOD / BODY FLUIDS:

PERSONAL PROTECTION: When handling items soiled with blood or body fluids, use disposable latex gloves, gowns, masks and eye coverings.

CLEANING PROCEDURES: Blood and other body fluids must be thoroughly cleaned from surfaces and objects before application of this product.

CONTACT TIME: Allow surface / object to remain wet for 30 seconds for HIV-1 (and 2 minutes for HBV (and HCV)).

DISPOSAL OF INFECTIOUS MATERIALS: Blood and other body fluids must be autoclaved and disposed of according to local regulations for infectious waste disposal.

<< TERMINAL STERILANT STATEMENT – qualified metal surfaces >>

This product is not for use on critical & semi-critical medical devices or medical equipment surfaces.

NOTE: Bracketed information is denoted as: << directive >>, { insert as noted }, (optional text), [required qualifier].
The term “this product” used throughout this document may be replaced with the marketed product brand name.
To use the term “germ” the product must be efficacious against 2 of the 3 major classes of organisms.
The product label must identify the specific bacteria, virus, fungus & mold.
The term (x) is a placeholder that represents a number between 1 and 99.
The term “Y” is a place holder for a character A – Z.

<< TERMINAL STERILANT STATEMENT – unqualified metal surfaces >>

This product is not to be used as a terminal sterilant / high level disinfectant on any surface or instrument that ⁽¹⁾ is introduced directly into the human body, either into or in contact with the bloodstream or normally sterile areas of the body; or ⁽²⁾ contacts intact mucous membranes but which does not ordinarily penetrate the blood barrier or otherwise enters normally sterile areas of the body. This product may be used to pre-clean or decontaminate critical or semi-critical medical devices prior to sterilization or high level disinfection.

<< USAGE CLAIMS >>

For Commercial Use

(§§) (This product) (meets) (is) (compliant with) OSHA Bloodborne Pathogens Standards**

<< PRECAUTIONARY / FIRST AID / STORAGE & DISPOSAL >>

PRECAUTIONARY STATEMENTS: Hazards to Humans and Domestic Animals

CAUTION: May cause eye irritation. Avoid contact with eyes. Wash hands after use.

FIRST AID	
If in eyes:	<ul style="list-style-type: none">• Hold eye open and rinse slowly and gently with water for 15-20 minutes.• Remove contact lenses, if present, after the first 5 minutes, then continue rinsing eye.• Call a Poison Control Center or doctor for treatment advice.
CONTACT NUMBER	
Questions? Comments or In case of an emergency, call toll free (1-800-228-4722) (1-800-677-9218) (1-800-560-6619) (1-xxx-xxx-xxxx). Have the product container or label with you when calling a Poison Control Center, or doctor, or going for treatment.	

<< HOUSEHOLD CONTAINER >>

STORAGE AND DISPOSAL: (Store unopened (peel & reseal) package in a cool, dry place in areas inaccessible to small children.) Dispose of (wipe) (cloth) in trash after use. (Reseal) (Close) (lid) (peel & reseal) (package) (pouch) between uses to retain moisture. Non-refillable (container) (package) (pouch). Do not reuse or refill this (container) (package) (pouch). Discard in trash or offer for recycling.

<< POUCH CONTAINER >>

STORAGE AND DISPOSAL: Store unopened (peel & reseal) (package) (pouch) in a cool, dry place in areas inaccessible to small children. Dispose of (wipe) (mopping) (cloth) in trash after use. Non-refillable (container) (package) (pouch). Do not reuse or refill this (container) (package). Discard empty (envelope) (pouch) in trash.

<< REFILLABLE CONTAINER >>

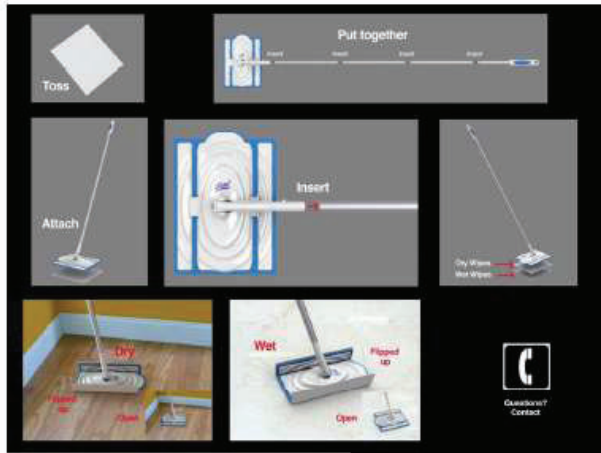
STORAGE AND DISPOSAL: (Store unopened (peel & reseal) (package) (pouch) in a cool, dry place in areas inaccessible to small children.) Dispose of (wipe) (cloth) in trash after use. (Reseal) (Close) (lid) (peel & reseal) (package) (pouch) between uses to retain moisture. Refillable. Refill (container) (package) (pouch) (only) with [this product]. If not refilling, discard in trash or offer for recycling.

<< NON-REFILLABLE CONTAINER >>

STORAGE AND DISPOSAL: (Store unopened package in a cool, dry place in areas inaccessible to small children.) Non-refillable (container) (package). Do not reuse or refill this (container) (package). Discard (bag) (pouch) (box) (container) (package) in trash or offer for recycling.

NOTE: Bracketed information is denoted as: << directive >>, { insert as noted }, (optional text), [required qualifier].
The term "this product" used throughout this document may be replaced with the marketed product brand name.
To use the term "germ" the product must be efficacious against 2 of the 3 major classes of organisms.
The product label must identify the specific bacteria, virus, fungus & mold.
The term (x) is a placeholder that represents a number between 1 and 99.
The term "Y" is a place holder for a character A – Z.

<OPTIONAL GRAPHICS>>



(Note to reviewer: The following are optional proprietary graphics)



COMPLETE CLEAN



NOTE: Bracketed information is denoted as: << directive >>, { insert as noted }, (optional text), [required qualifier].
The term "this product" used throughout this document may be replaced with the marketed product brand name.
To use the term "germ" the product must be efficacious against 2 of the 3 major classes of organisms.
The product label must identify the specific bacteria, virus, fungus & mold.
The term (x) is a placeholder that represents a number between 1 and 99.
The term "Y" is a place holder for a character A – Z.



NOTE: Bracketed information is denoted as: << directive >>, { insert as noted }, (optional text), [required qualifier].
The term "this product" used throughout this document may be replaced with the marketed product brand name.
To use the term "germ" the product must be efficacious against 2 of the 3 major classes of organisms.
The product label must identify the specific bacteria, virus, fungus & mold.
The term (x) is a placeholder that represents a number between 1 and 99.
The term "Y" is a place holder for a character A – Z.



aaaaaaaaa

[Note to reviewer: The following text is associated with the image above: “BONUS CERTIFICATE”

“(X) Bonus Box Tops” “Rules for Redemption

- 1) Save this certificate – it’s extra cash for your school.
- 2) Turn in to your participating K-8 Box Tops school.
- 3) Your school can redeem it to earn \$x.xx

This certificate expires xx/yy/zz. No photocopies or other reproduction will be accepted. Bonus Certificates may not be sold, exchanged or traded and can only be redeemed by an accredited K-8 school registered in the Box Tops for Education Program. “]

Above image is to help consumers know where to peel open the label/package to remove a cloth.



The image in context of the label/package (to help consumers know where to peel open the package)

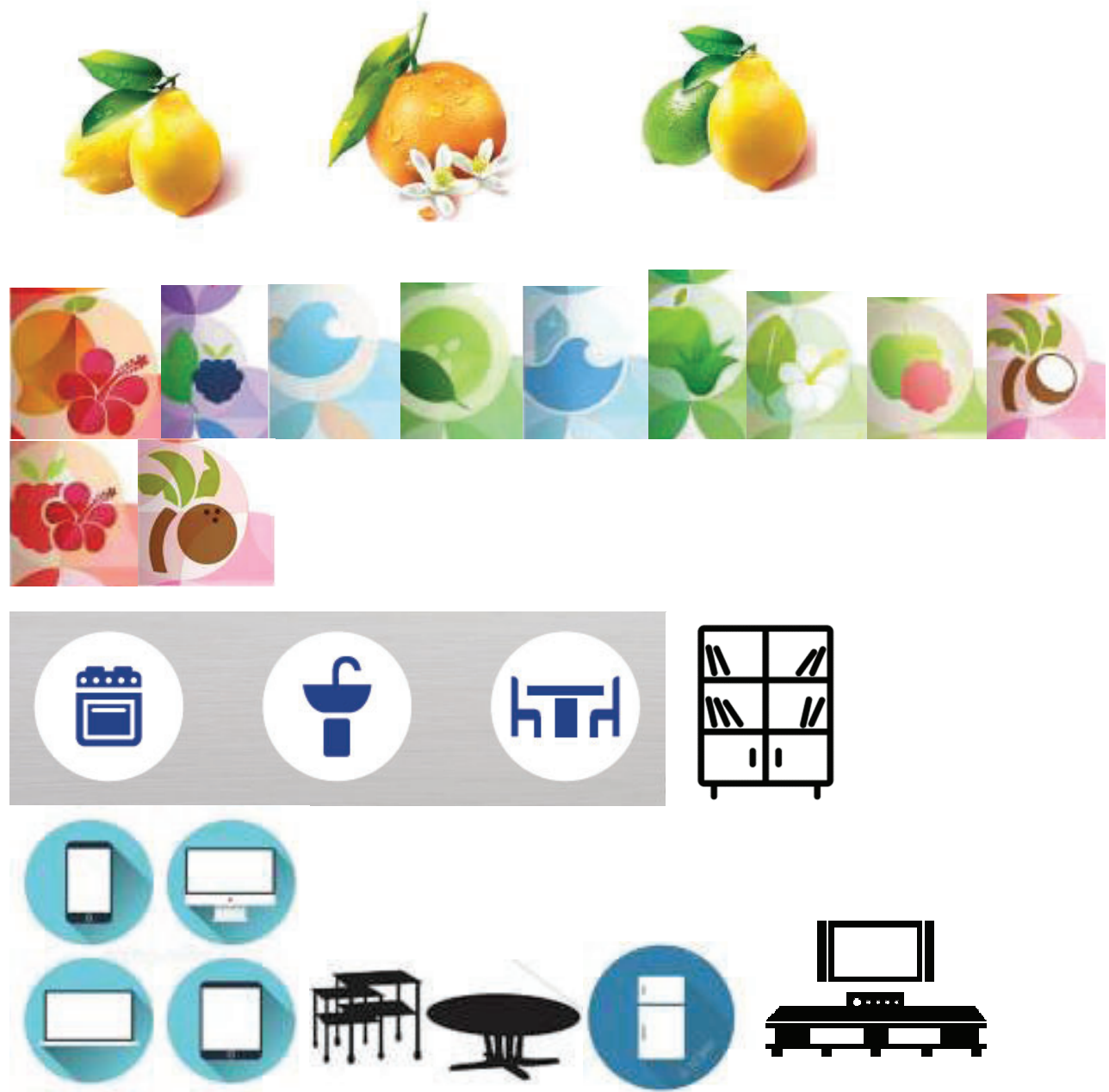


(Year will be included within the logo)

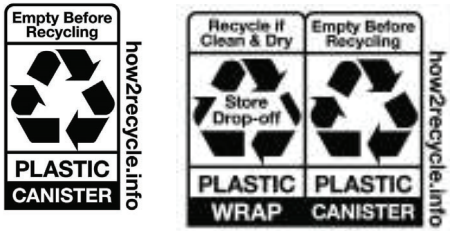


(DAYTONA, DAYTONA 500, and the DAYTONA 500 logo are registered trademarks and used with expressed permission) (Daytona URL:) (For games, prizes and more visit www.RaceFans.DAYTONA500.com.)

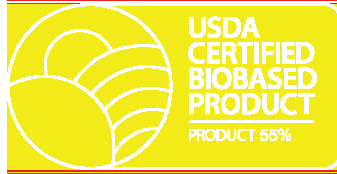
NOTE: Bracketed information is denoted as: << directive >>, { insert as noted }, (optional text), [required qualifier].
The term “this product” used throughout this document may be replaced with the marketed product brand name.
To use the term “germ” the product must be efficacious against 2 of the 3 major classes of organisms.
The product label must identify the specific bacteria, virus, fungus & mold.
The term (x) is a placeholder that represents a number between 1 and 99.
The term “Y” is a place holder for a character A – Z.



NOTE: Bracketed information is denoted as: << directive >>, { insert as noted }, (optional text), [required qualifier].
The term "this product" used throughout this document may be replaced with the marketed product brand name.
To use the term "germ" the product must be efficacious against 2 of the 3 major classes of organisms.
The product label must identify the specific bacteria, virus, fungus & mold.
The term (x) is a placeholder that represents a number between 1 and 99.
The term "Y" is a place holder for a character A – Z.

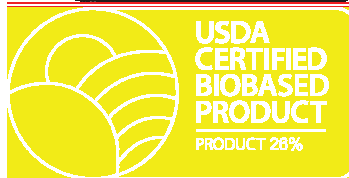


<< Graphics for Lysol Disinfecting Wipes only >>



<< This graphic is white lettering and white graphics >>

<< Graphics for Lysol Dual Action Wipes only >>



<< This graphic is white lettering and white graphics >>

NOTE: Bracketed information is denoted as: << directive >>, { insert as noted }, (optional text), [required qualifier].
The term "this product" used throughout this document may be replaced with the marketed product brand name.
To use the term "germ" the product must be efficacious against 2 of the 3 major classes of organisms.
The product label must identify the specific bacteria, virus, fungus & mold.
The term (x) is a placeholder that represents a number between 1 and 99.
The term "Y" is a place holder for a character A – Z.

<<APPENDIX 1>>

<< SUPPORTING CLAIM QUALIFIERS – must appear before ‘Directions For Use’ on Back Panel label >>

- ++ (This product) removes the following allergens: (cat dander) (cockroach debris) (cockroach matter) (cockroach particles) (dog dander) (dust mite debris) (dust mite matter) (dust mite particles) (hair) (pet dander) (pet hair) (and) (pollen particles) (from) (timothy grass).
- +++ Swiffer® is registered trademark of Procter & Gamble Company. This product is not authorized, licensed, sponsored or endorsed by Procter & Gamble Company.
- (1) Confirm school policy allows for use and / or donation of product. Adults must deliver donations (directly) to schools.
- ∞ (Cleans,) Scrubbing Wipe, Citrus Scent, Powers through Soap Scum, Strong Wipe, Removes Dust, Removes Grease, Removes tough Soil, Lifts Mess, Versatile Usage, Freshens
- ^ Chlorine Bleach
- & Strength of the wipe substrate material to resist tearing during use
- * << ANTIBIOTIC RESISTANT DISINFECTION QUALIFIER >> Kills (Klebsiella pneumoniae – NDM-1) (and) (Escherichia coli with extended beta-lactamase resistance (ESBL)) (Klebsiella pneumoniae Carbapenem resistant) (and) (Staphylococcus aureus - Methicillin resistant (MRSA)) (Multi-Drug Resistance Acinetobacter baumannii (MDR)), (Multi-Drug Resistance Enterobacter aerogenes (MDR)) (Carbapenem resistant Klebsiella pneumonia) ((Hospital Associated) Methicillin Resistant Staphylococcus aureus (MRSA)) on hard, non-porous surfaces in 4 minutes.
- ** Kills (99.9% of) {insert organisms – See organism list in this Appendix} on hard, non-porous surfaces in (4) (or) (10) minutes.
- *** Kills 99.9% of (the following) (bacteria) in 10 seconds: (Campylobacter jejuni) (Enterobacter aerogenes) (Salmonella enterica) (Staphylococcus aureus) (Streptococcus pyogenes) (Listeria monocytogenes) ((Methicillin Resistant) Staphylococcus aureus [MRSA]) (Hospital Associated (Methicillin Resistant) Staphylococcus aureus [MRSA]) (Community Associated (Methicillin Resistant) Staphylococcus aureus [MRSA]) on hard, non-porous surfaces in (10 seconds).
- *** Kills 99.9% (of) (Enterobacter aerogenes) (Staphylococcus aureus) on hard, non-porous surfaces in 10 seconds.
- *** Kills 99.9% (of) (Campylobacter jejuni) (Enterobacter aerogenes) (Salmonella enterica) (Staphylococcus aureus) (Streptococcus pyogenes) ((Methicillin Resistant) Staphylococcus aureus [MRSA]) (Hospital Associated (Methicillin Resistant) Staphylococcus aureus [MRSA]) (Community Associated (Methicillin Resistant) Staphylococcus aureus [MRSA]) (Listeria monocytogenes) (commonly found) (in the kitchen) on hard, non-porous kitchen surfaces in (10 seconds).
- † Kills (Human Immunodeficiency Virus Type 1) ((Human) Coronavirus) (Influenza A Virus) (Herpes Simplex Virus Type 1) (Herpes Simplex Virus Type 2) (Respiratory Syncytial Virus) (Swine Influenza A Virus [H1N1]) (Influenza A Virus (H1N1)) (Coronavirus SARS-CoV) (Influenza A H5N1 Avian) in 2 minutes on hard, non-porous surfaces.
- (1) Confirm school policy allows for use and / or donation of product. Adults must deliver donations (directly) to schools.
- (2) Kills (Influenza A Virus) (Swine Influenza A Virus ([H1N1])) (Influenza A Virus (H1N1)) (Influenza A H5N1 Avian (H5N1)) on hard, non-porous surfaces in 2 minutes.
- (3) Kills (Influenza A Virus) (Human Coronavirus) (Swine Influenza A Virus ([H1N1]) (Influenza A Virus (H1N1)) (Influenza A H5N1 Avian (H5N1) (Respiratory Syncytial Virus (RSV)) (Coronavirus SARS-CoV) on hard, non-porous surfaces in 2 minutes.
- 4 Kills (Eliminates) 99.999% of (Enterobacter aerogenes) (and) (&) (Staphylococcus aureus) on hard, non-porous surfaces in 30 seconds.

NOTE: Bracketed information is denoted as: << directive >>, { insert as noted }, (optional text), [required qualifier].
The term “this product” used throughout this document may be replaced with the marketed product brand name.
To use the term “germ” the product must be efficacious against 2 of the 3 major classes of organisms.
The product label must identify the specific bacteria, virus, fungus & mold.
The term (x) is a placeholder that represents a number between 1 and 99.
The term “Y” is a place holder for a character A – Z.

- 5 Kills (99.9% of) (*Pseudomonas aeruginosa* (*Pseudomonas*)) (*Salmonella enterica* (*Salmonella*)) (*Staphylococcus aureus* (*Staph*)) on hard, non-porous surfaces in (4) (or) (10) minutes.
- (6) (based on) ((when) compared to) (vs.) (previous) (Lysol® Brand II Disinfecting Wipes) (insert Lysol® brand name) (EPA approved master label) label (for this product) (version X) ({insert date})
- 7 (based on) ((when) compared to) (vs.) (previous) (Lysol® Brand II Disinfecting Wipes)
- 8 than our 35ct package
- 9 when used as directed
- 10 Coronavirus SARS-CoV, Human Coronavirus, Influenza A H3N2, Avian Influenza A H5N1, Avian, (Pandemic) Influenza A Virus [H1N1], Respiratory Syncytial Virus (RSV), (Swine) Influenza A Virus (H1N1), Influenza A Virus (Strain New Caledonia/20/99) (Flu Virus), Influenza H7N9 (wildtype A/Anhui/1/2013)
- 11 Kills *Salmonella enterica*, *Escherichia coli* O157:H7, *Staphylococcus aureus*-Methicillin resistant, Respiratory Syncytial Virus, *Staphylococcus aureus*, *Streptococcus pyogenes*
- 12 vs a paper towel

<< This section is for information purposes only – unless otherwise noted. >>

<< 4-min Disinfection - Bacteria >>	ATCC No	<< 2-min Disinfection - Viruses >>	ATCC No.
<i>Acinetobacter baumannii</i> MDR	(19606)	Coronavirus SARS-CoV	(CDC200300592)
<i>Bordetella pertussis</i>	(12743)	Hepatitis B Virus (HBV) (Surrogate- Duck Hepatitis B virus)	(Hepadna)
<i>Campylobacter jejuni</i>	(33560)	Hepatitis C Virus (HCV) (Surrogate-BVDV)	(NVSL)
<i>Enterobacter aerogenes</i> MDR	(29751)	Herpes Simplex Virus Type 1	(VR-733)
<i>Escherichia coli</i> O157:H7 (<i>E.coli</i>)	(51657)	Herpes Simplex Virus Type 2	(VR-734)
<i>Escherichia coli</i> with extended spectrum beta-lactamase resistance (ESBL)	(BAA 196)	Human Coronavirus	(VR-740)
<i>Haemophilus influenzae</i>	(33930)	Influenza A H3N2 Avian	(VR-2072)
<i>Klebsiella pneumoniae</i> NDM-1 positive	(CDC1000527)	Influenza A H5N1 Avian	(CDC2006719965)
<i>Klebsiella pneumoniae</i> Carbapenem resistant	(BAA1705)	(Pandemic) Influenza A Virus (2009) (H1N1)	(CDC2009712192)
<i>Legionella pneumophila</i>	(33153)	Respiratory Syncytial Virus (RSV)	(VR-26)
<i>Listeria monocytogenes</i>	(19117)	(Swine) Influenza A Virus (H1N1)	(VR-333)
<i>Micrococcus luteus</i>	(14408)		
<i>Proteus mirabilis</i>	(9240)		
<i>Pseudomonas aeruginosa</i>	(15442)	<<30-sec Disinfection – Viruses>>	ATCC No.
<i>Salmonella enterica</i> (<i>Salmonella</i>)	(10708)	Human Immunodeficiency Virus Type [HIV-1 AIDS Virus] (HIV-1 was tested in the presence of 50% human whole blood)	n/a
<i>Salmonella enterica</i> serovar <i>gallinarum</i>	(9184)		
<i>Shigella flexneri</i> serotype 1B	(9380)		
<i>Staphylococcus aureus</i> (<i>Staph</i>)	(6538)	<<10-min Disinfection – Viruses>>	ATCC No.
<i>Staphylococcus aureus</i> - Methicillin resistant (HA-MRSA)	(33592)	Influenza A Virus (Strain New Caledonia/20/99) (Flu Virus)	n/a
<i>Staphylococcus hominis</i>	(25615)	Rotavirus WA	(VR-2018)
<i>Streptococcus agalactiae</i>	(13813)		
<i>Streptococcus mutans</i>	(25175)	<<3-min Disinfection – Viruses>>	ATCC No.
<i>Streptococcus pyogenes</i> [Strep]	(12384)	Influenza H7N9 (wildtype A/Anhui/1/2013)	(CDC2013759189)
<i>Streptococcus suis</i>	(43765)		
		<<10-sec Sanitization – Bacteria – Hard, non-porous, non-food contact surfaces>>	ATCC No.
<< 10-min Disinfection - Bacteria >>		<i>Campylobacter jejuni</i>	(29428)
<i>Pseudomonas aeruginosa</i> (<i>Pseudomonas</i>)	(15442)	<i>Enterobacter aerogenes</i>	(13048)
<i>Salmonella enterica</i> (<i>Salmonella</i>)	(10708)	<i>Listeria monocytogenes</i>	(19111)

NOTE: Bracketed information is denoted as: << directive >>, { insert as noted }, (optional text), [required qualifier].
The term “this product” used throughout this document may be replaced with the marketed product brand name.
To use the term “germ” the product must be efficacious against 2 of the 3 major classes of organisms.
The product label must identify the specific bacteria, virus, fungus & mold.
The term (x) is a placeholder that represents a number between 1 and 99.
The term “Y” is a place holder for a character A – Z.

Staphylococcus aureus (Staph)	(6538)	Salmonella enterica (Salmonella)	(10708)
<< 30-sec Sanitization – Bacteria - Hard, non-porous, non-food contact surfaces >>	ATCC No.	Staphylococcus aureus (Staph)	(6538)
Campylobacter jejuni	(29428)	Staphylococcus aureus – Hospital Associated Methicillin resistant (MRSA)	(33592)
Enterobacter aerogenes	(13048)	Staphylococcus aureus – Hospital Associated Methicillin resistant (MRSA)	(33591)
Escherichia coli O157:H7 (E. coli O157:H7)	(43888)	Streptococcus pyogenes	(19615)
Listeria monocytogenes	(19111)	<<3-min Mildew Fungistat>>	ATCC No.
Salmonella enterica (Salmonella)	(10708)	Aspergillus niger (mold & mildew)	(6275)
Staphylococcus aureus (Staph)	(6538)		
Staphylococcus aureus [MRSA]	(33592)		
Staphylococcus aureus [MRSA] (Hospital Associated MRSA)	(33591)		
Staphylococcus aureus [MRSA] (Community Associated MRSA)	(BAA-1556)		
Streptococcus pyogenes	(19615)		

Symbol Designation – used on product labels

Single asterisk (*) ⁽⁵⁾	Bacteria (*) ⁽⁵⁾ / Fungi	Used for identifying disinfection against specific bacteria or fungi
Dagger (†)	Viruses †	Used for identifying disinfection against specific viruses
Double asterisk (**)	Germes **	Used for identifying disinfection against specific bacteria & viruses / fungi
Triple asterisk (***)	Sanitizes ***	Used for identifying sanitization against bacteria
Double dagger (††)	Allergens ††	Used for identifying the removal of specific non-living allergens
Superscript 2 ⁽²⁾	Flu Virus ⁽²⁾	Used for identifying disinfection against specific Flu viruses
Superscript 3 ⁽³⁾	Cold and Flu Virus ⁽³⁾	Used for identifying disinfection against specific cold and Flu viruses

<< APPENDIX 2 >>

<< SOILS / SURFACES / USE SITES – May be listed on product label in the singular or plural form >>

Soils: (Graphic – depicting soil)

Bacon fat	Dust	Limescale	Small spills
Baked on cheese	Everyday messes	Lint	Smudges
Bathtub rings	Fingerprint	Makeup	Soap Scum
Beverage stains	Food (residues) (particles)	Mildew (mold) stains	Stains
(Burnt on) Food (stains)	Footprints	Mud	Sticky messes
(Burnt on) Grease	Gravy	Oil	Tea (stains)
Chicken juice	Grease	Outdoor grime	Tomato sauce
Crayon	Grime	Pancake mix	(Dried on) Toothpaste
Coffee stains	(Pet) Hair	Particles (residues)	(Tough) messes
Cooking splashes	Hard Water (stain)	Peanut butter	Tough soil
Cosmetics	(Heel) (scuff) marks	(Pen) (or) (ink) marks	Wine (stains)
Crumbs	Honey	Pencil	(Build Up)
Dirt	Jelly	Pet messes	(Built) Up)
Dried on food	Juice stains	Pet stain(s)	

Non-living Allergens:

Cat dander	Cockroach particles	Dust mite matter	Pet dander
Cockroach debris	Dog dander	Dust mite particles	Pollen particles
Cockroach matter	Dust mite debris	(Hair) (Pet hair)	Timothy grass

Hard, Non-porous Surfaces: (Graphic – depicting surface / use site)

Appliance (exterior) (handles)	Finished wood (furniture) (surfaces)	Potty trainer (seats)
Baby carriages	Fitness (Centers) Equipment	Rails

NOTE: Bracketed information is denoted as: << directive >>, { insert as noted }, (optional text), [required qualifier].
The term “this product” used throughout this document may be replaced with the marketed product brand name.
To use the term “germ” the product must be efficacious against 2 of the 3 major classes of organisms.
The product label must identify the specific bacteria, virus, fungus & mold.
The term (x) is a placeholder that represents a number between 1 and 99.
The term “Y” is a place holder for a character A – Z.

Baseboards	(Bathroom) (Kitchen) Fixtures	Range hoods
Blinds		Refrigerators (exteriors) (shelves) +
(Plastic) Bathtub (Tub)	(Bathroom) (Kitchen) floor	Remote Control
(non-wood) Bed frames	(Laminate) (Laminated floors)	(Non-wood) Shelves (shelving)
(Plastic) Booster Seats	Gadget	Shower (plastic/vinyl curtain)
		(Stall) (Area) (head)
(non-wood) cabinets	Gaming console	(fittings) (hardware)
Car seats	Garbage Can (Pail)	(Kitchen) (Bathroom) Sink (Basin)
Car (Dashboard) (Steering Wheel)		Litter boxes
Cell phone		Sink(s)
Changing Table	Glazed Ceramic Tile	Smartphone
(Computer) Keyboards	Glazed Porcelain Tile	Sports equipment
Coffee maker+++	Glass+++	
(Laptop) (Computer) (Mouse)	Handheld player (MP3)	Stainless Steel ~
	<u>Handrail(s)</u>	
(Kitchen) Counter (Countertop) +	Highchair (non-wood) (non-food contact area)	Stove (Stovetop) +
(Crib(s)) (rails)	(iPod) (iPod)	Strollers
	<u>IV Pole(s)</u>	
Desktop (monitor)	Kitchen Surfaces +	Table (Tabletop) +
Desks		
(Diaper) changing (Counters) (tables)	Light switches	Tablet
	LCD(s)	
Diaper Pail	(sealed marble) (glazed marble)	Telephones (phones)
Door Knob (Handle)	(Microwave) Oven +	Tiles
	Navigation screens	Tiled wall +
	Pen	Toaster ovens +
(E-Reader) (E-book)	(Non-wood) (Baby) (Furniture)	(Toilet) (Urinal) Exteriors
Electronic (book) (device)	(Non-wood) (finished) Cabinets	Toilet Seats
		(Tool) (Toy) box(es)
Enamel Tile	Outdoor Furniture (except cushions/woodframes)	Touch screen
Exhaust Fan (Hood)	Patio furniture	Trains
	Plastic Laundry Basket (Hamper)	
Exterior of Toilets	(Plastic) Toys (4)	Vanity Top
(Kitchen) (Bathroom) Faucet	Portable audio	Washable Wall
		<u>Wheelchairs</u>
	Walkers	Window Sills

(~) Non-Medical or Fixture

(4) Use on toys requires a rinsing step after disinfection – follow the Directions for use for Toys.

<< SOILS / SURFACES / USE SITES – continued >>

Surface Types: (~ Non-Medical or Fixture)

Aluminum	Glass	Plastic Laminate
Brass	Glazed Ceramic	^ Plexiglas®
Chrome~	Glazed Enamel	Sealed (floors) (marble) (quartz) (stone)
^ Corian®	Glazed Porcelain	Sealed Granite
Crystal	(waxed) Linoleum	Sealed Terra Cotta
Enamel	(non-waxed) Linoleum	Sealed wood
Fiberglass Fixtures	Metal	Stainless Steel~
Finished Wood (floors)	Mirror	Tin
^ Formica®	Plastic	Vinyl

^ Corian® is a registered trademark of DuPont.

NOTE: Bracketed information is denoted as: << directive >>, { insert as noted }, (optional text), [required qualifier].
The term “this product” used throughout this document may be replaced with the marketed product brand name.
To use the term “germ” the product must be efficacious against 2 of the 3 major classes of organisms.
The product label must identify the specific bacteria, virus, fungus & mold.
The term (x) is a placeholder that represents a number between 1 and 99.
The term “Y” is a place holder for a character A – Z.

^ Formica® is a registered trademark of The Diller Corporation.
^ Plexiglas® is a registered trademark of the Atoglas Company

Patterns/Textures: (Graphic – depicting images)

3D	Grooves	Scrub(by)(ing) Stronger
C	Honeycomb	Technology
Diamond	Interlocking	Texture
Dots	Knit(ted)	
Embossed	Locker	Thicker
	Pattern	Trapper
	Pillow Top	Triple Knitted
Gripper	Quilted	(Ultra) (Weave) (Woven)
Grooved	Raised	Wipe
	Ripple(s)	Woven (Texture)

Household Use Sites: (Graphic – depicting use site)

Automobiles (Interiors)	Dorm Room	Nursery
Airplane (Trays) (Bathrooms)		
Baby's room	Entrances	Office
Basement	Family Room	Patio Furniture
Bathroom (restroom)	Foyers	Electronics
	Gas Stations	
Bedroom	(Health Clubs) (Gym(s))	Playground(s) (Equipment)
		Playroom
Boats	Home / House	Pet areas
	High Chairs	(Sealed) Picnic Tables ⁺⁺
	Jungle Gym(s)	Portable Bathrooms
		Porta Potty
		Public changing tables
		(Public) (Commuter) Buses
		Play Areas
		Rec(reational) Centers (Facilities)
Car(s) (Interiors)	Kitchen	Ship(s)
Campgrounds		Train(s)
Church(es)		Work(place)
		Subway(s)
		(Water) (Drinking) Fountain (toggles)
		(handles) (buttons)
		Storage Areas
Children's rooms	Laundry room	Toddler's room
		(Trash) (Garbage) (Recycling)(Can(s))
		(Bin(s))
Closets	Living room	Vacation homes
	Locker Rooms	(Window Sills)
(Classroom) Desks	Mudrooms	All around the (house) (home)

Business Use Sites: (Graphic – depicting use site)

Airports	Grocery/Shopping Carts	Patient Chairs
----------	------------------------	----------------

NOTE: Bracketed information is denoted as: << directive >>, { insert as noted }, (optional text), [required qualifier].
The term "this product" used throughout this document may be replaced with the marketed product brand name.
To use the term "germ" the product must be efficacious against 2 of the 3 major classes of organisms.
The product label must identify the specific bacteria, virus, fungus & mold.
The term (x) is a placeholder that represents a number between 1 and 99.
The term "Y" is a place holder for a character A – Z.

Ambulances
Bowling Alleys

Grocery Stores
Health Clubs/Fitness Centers

Physician's Office
(Public) Restroom

Healthcare
(Center(s))(Facility)

Classrooms
Clinics
Cuspidors
Day Care Center
Dental Office
Doctors Office
Elevators
Examination Tables
Gas Stations

Hotel / Motel
Kennels
Laboratories
Malls
Military Institutions
Nursery (Schools)
Nursing Home
Office (Building)
Operatories

(Public) Telephones
Restaurant (Tables)⁺⁺⁺
Rest Stops
RV
School (buses)
Sick Room
Stretchers
Veterinary (Offices)

NOTE: Bracketed information is denoted as: << directive >>, { insert as noted }, (optional text), [required qualifier].
The term "this product" used throughout this document may be replaced with the marketed product brand name.
To use the term "germ" the product must be efficacious against 2 of the 3 major classes of organisms.
The product label must identify the specific bacteria, virus, fungus & mold.
The term (x) is a placeholder that represents a number between 1 and 99.
The term "Y" is a place holder for a character A – Z.