

UNITED STATES ENVIRONMENTAL PROTECTION AGENCY

Ms. Mary C. Pisculli
 Reckitt Benckiser, Inc.
 Morris Corporate Center IV
 399 Interpace Parkway
 Parsippany, NJ 07054-0225

FEB 29 2012

SUBJECT: Citrus Scent Lysol Brand Antibacterial Kitchen Cleaner II
 EPA Registration Number: 777-91
 Application Date: December 2, 2011
 Receipt Date: December 5, 2011

Dear Ms. Pisculli:

The following amendment, submitted in connection with registration under the Federal Insecticide, Fungicide, and Rodenticide Act (FIFRA), as amended, is acceptable subject to the conditions listed below:

- Label Update

Conditions

Revise the label as follows:

- 1) Please note that the in the fourth statement of the packaging claims section on page 2 the terms "Great" and "Super" may not be used alone as each would imply heightened efficacy. "Great" and "Super" may only be used in conjunction with the terms "Value," "Pack," "Refill," and "Size".
- 2) Revise the following statement under Marketing Claims on page 2 by deleting the reference to disinfection as in this statement which implies heightened efficacy. Revise "(Better than ever) cleaning (and disinfection) for your kitchen" to state "(Better than ever) cleaning for your kitchen"
- 3) Revise the following statement under Marketing Claims on page 3 by deleting the reference to antibacterial as in this statement which implies heightened efficacy. Revise "Powerful (fast acting) (antibacterial kitchen) cleaner" to read "Powerful (fast acting) (kitchen) cleaner"

CONCURRENCES

SYMBOL	7510P						
SURNAME	J. Lath						
DATE	2/29/12						

- 4) Delete the following statement on page 6. This statement indicates that this product will deodorize or sanitize while it cleans. This is incorrect as the deodorization or sanitization directions must be followed to eliminate antimicrobial pests. Following the cleaning directions will not provide pesticidal activity. Thus delete the statement: "Deodorizes and sanitizes as it cleans." This is the 19th statement.
- 5) The following sections on page 10 must be relocated to the directions for use section of the label: Terminal Sterilant Statement-qualified metal surfaces, Terminal Sterilant Statement-unqualified metal surfaces, and the HIV directions for use. Each of these sections contains directions for use and thus must be placed in that section.
- 6) Make the following clarifications to page 8 in the sanitizing claims and supporting sanitizing claims sections. Revise to state: "(A) Versatile and convenient sanitizer for hard, non-porous *non-food contact surfaces*", "Sanitizes (and deodorizes) hard, non-porous *non-food contact surfaces* throughout your kitchen", "Sanitizes (hard, non-porous) *non-food contact surfaces* (in the kitchen)", "Sanitizes ({insert surface/site See page 19}) *non-food contact surfaces* in 30 seconds" and "Kills 99.9% of (*Escherichia coli*.....(*Streptococcus pyogenes*) on *hard non-porous non-food contact surfaces* (in 30 seconds)."
- 7) Delete the following two statements on page 9. Each either indicates that this product will disinfect, sanitize or kill germs while it cleans. This is incorrect as the disinfection or sanitization directions must be followed to eliminate antimicrobial pests. Thus delete the statements: "Disinfects (Deodorizes) (and) (Sanitizes) as it Cleans" and "Kills germs while it cleans." These are the 8th and 27th statements.
- 8) Revise the contact time in the HIV section on page 10 to be in agreement with the last stamped label for this product by correcting to read "remain wet for 10 minutes."
- 9) Revise page 13 by correcting the name of this product in the third statement under the heading "Starter Kit" to read: "(1) (-) (Bottle of) *Citrus Scent Lysol Brand Antibacterial Kitchen Cleaner II*"
- 10) Revise page 24 to include product use surfaces and sites (as per page 19) in the directions for use section.

CONCURRENCES

SYMBOL								
SURNAME								
DATE								

- 11) Relocate and place in bold text the statement found on page 24: "Do not use on eating/cooking utensils, glasses/dishes or cookware." Such that this statement immediately precedes the directions "To Clean/Deodorize".

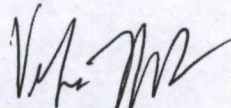
Should you wish to retain a reference to the company's website on your label, then please be aware that such a reference transforms the website into labeling under the Federal Insecticide Fungicide and Rodenticide Act sec 2 (p) (2) and then the website is subject to review by the Agency. If the website content is false or misleading, the product would be misbranded and its sale or distribution unlawful to sell or distribute under FIFRA section 12(a)(1)(E). In addition, regardless of whether a website is referenced on your product's label, claims made on the website may not substantially differ from those claims approved through the registration process. Although EPA has not yet determined the extent to which it will routinely review company websites, if the Agency finds or if it is brought to our attention that a website contains false or misleading statements or claims substantially differing from claims approved through the registration process, the website may be referred to the EPA's Office of Enforcement and Compliance Assurance.

The stamped accepted label has been made part of the record for your file.

General Comments

A stamped copy of the accepted labeling is enclosed. Submit one (1) copy of your final printed labeling before distributing or selling the product bearing the revised labeling. Should you have any questions concerning this letter, please contact Tracy Lantz at (703) 308-6415.

Sincerely,



Velma Noble
Product Manager (31)
Regulatory Management Branch I
Antimicrobials Division (7510P)

Enclosure: Stamped accepted label
7510P:T.Lantz:2/29/12:777-91 b accepted label amend

CONCURRENCES

SYMBOL								
SURNAME								
DATE								

4/34

Citrus Scent Lysol Brand Antibacterial Kitchen Cleaner II
EPA Reg. No.: 777-91

Amended: 12-02-2011
Page No.: 1 of 28

<< FRONT PANEL >>

ACTIVE INGREDIENT:

Alkyl (50% C ₁₄ , 40% C ₁₂ , 10% C ₁₆) dimethyl benzyl ammonium chloride	0.0216%
Alkyl (67% C ₁₂ , 25% C ₁₄ , 7% C ₁₆ , 1% C ₈ -C ₁₀ -C ₁₈) dimethyl benzyl ammonium chloride	0.0860%
OTHER INGREDIENTS:	99.8924%
TOTAL:	100.0000%

KEEP OUT OF REACH OF CHILDREN

WARNING: See (back) (side) panel for additional precautionary statements.

(NET CONTENTS:) 16.9 FL. OZ.	500 mL	40 FL. OZ. (1 QT. 8 FL. OZ.)	1.18 L
17 FL. OZ. (1 PT. 1 FL. OZ.)	502 mL	42.2 FL. OZ. (1.32 QTS.)	1.25 L
22 FL. OZ. (1 PT. 6 FL. OZ.)	650 mL	64 FL. OZ. (2 QTS.)	1.89 L
24 FL. OZ. (1 PT. 8 FL. OZ.)	709 mL	128 FL. OZ. (1 GAL.)	3.78 L
32 FL. OZ. (1 QT.)	946 mL	144 FL. OZ. (1.125 GAL.)	4.25 L

<< FRONT / BACK PANEL >>

EPA Reg. No.: 777-91
EPA Est. No.: 777-NJ-2
8791-MO-1

(See bottom or side) (for Lot / Date code)

ACCEPTED
with COMMENTS
in EPA Letter Dated:

FEB 29 2012

Under the Federal Insecticide,
Fungicide, and Rodenticide Act as
amended, for the pesticide,
registered under EPA Reg. No. 777-91

<< BACK PANEL >>

Questions? (1) (Call:) (1-800-228-4722) (1-800-677-9218)
For ingredient (and other) information, (www.rbnainfo.com) (website)
Distributed by: Reckitt Benckiser, Parsippany, NJ 07054 (-xxxx)
Made in U.S.A. ©{year} RB
Contains no phosphates.
This (bottle) (container) is made of 25% post-consumer recycled plastic.



Company graphic logo

<< FRONT / BACK PANEL – Option text >>

Kosher Certification Symbol



Important facts (about this product)

Encourage your state and local authorities to establish a program to recycle this (bottle) (container).

IMPORTANT: For directions for use and first aid instructions in Spanish, please call 1-877-843-3817.

<< Spanish Translation >>

IMPORTANTE: Para instrucciones de uso y primeros auxilios en español por favor llame al 1-877-843-3817.

Learn more about (the importance of good hygiene habits) (and the many ways that Lysol® is promoting good hygiene habits) (for your family and community), go to www.spreadinghealth.com.

NOTE: Bracketed information is denoted as: << directive >>, { insert as noted }, (optional text), [required qualifier].
The term "this product" used throughout this document may be replaced with the marketed product brand name.
To use the term "germ*" the product must be efficacious against 2 of the 3 major classes of organisms.
The product label must identify the specific bacteria, virus, fungus & mold.
The term 'x' is a place holder for a number between 1 to 99.

<< NOTE: Any claim may appear on FRONT / BACK panel in bullet / paragraph format – Unless otherwise noted. >>

<< INTRODUCTORY 6-mos. CLAIMS – will only appear on graphic label for the first 6 months product is on shelf >>

(Improved) (New) (Reformulated) (Formula) (Fragrance) (Scent) (Complete) (Formulation)
(New & Improved) (New & Improved Fragrance) (New & Improved Formula) (New & Improved Scent)

<< FRAGRANCE CLAIMS >>

(Citrus) (Citrus Fresh) (Crisp Linen) (Fresh) (Pacific Fresh) (Sparkling Citrus) (Spring Waterfall) (Breeze) (Scent)
(Unfragranced) (Unscented) (Mild) (Clean) (Pleasant) (Long Lasting) (Fragrance) (Fresh Fragrance)

<< PACKAGING CLAIMS >>

(Bonus) (Bonus x%) (Bonus x oz.) (x% Discount) (x% More Free)
(x oz. at x oz. Price) (x oz. for the x oz. price) (x oz. at the price of x oz.) (x oz. for the price of x oz.) (x oz. Free)
(More than) (Over) (x # of squirts per bottle) (x # of sprays per bottle) (x # of uses per bottle) (x # of uses per bottle)
(Economy) (Great) (Mega) (Super) (Trial) (Value) (Pack) (Refill) (Size)
(Money back guarantee) (Your # 1 choice) (Take the Lysol® Challenge) (Try it yourself) (or) (Get your money back)

<< MARKETING CLAIMS >>

(3-in-1) (4-in-1) (4 way) (Action) (All-in-1) (All in 1 Complete) (Cleaning Power) (Express) (Clean & Fresh) (Multi-Action)
(Multi-Clean) (Multi-Purpose) (Multi-Surface) (Multi-Task) (Triple Action) (Floor) (Glass & Surface) (Kitchen) (Cleaner)
(Cleaning) (Deodorizer) (Disinfectant) (Sanitizer)

(Advanced) (Complete) (Easy) (Easy to use) (Effective) (Quick) (Quick & Easy)
(Ready to use) (Streak-free) (Ultra) (Versatile) (Clean) (Cleaner) (Cleaning) (Degreaser) (Degreases)
(Deodorizes) (Grease releaser) (with grease release action)
(Beautiful) (Bright) (Brilliant) (Glistening) (See-through) (Streak-free) (Shine)
(Bleach-free) (Non-abrasive) (Streak-free) formula

(Antibacterial) (Antibacterial Action) (Bactericidal*) (Bactericide*) (Cleaner) (Deodorizer) (Deodorizes) (Disinfectant)
(Disinfects) (Fungistat) (Fungistatic) (Germicidal**) (Sanitizer) (Sanitizes) (Virucidal†) (Kitchen Cleaner)

For a complete clean, [this product] (is) (an) (will) (has) {insert below listed claim from pgs. 2-7}

4-in-1 action (- saves you time)
All in 1 complete (cleaning) (action)
Antibacterial 4-in-1 action
A convenient way to (clean) (disinfect) (deodorize) (and) (sanitize)
A formula that leaves a streak-free shine
Antibacterial kitchen surface cleaner
(Better than ever) cleaning () for your kitchen
Combines streak-free cleaning with antibacterial action
Contains maximum stain fighting power (and complete disinfection)
Contains no (abrasives) (or) (harsh chemicals)
Contains (powerful) (effective) (fast acting) (grease cutters) (cleaning agents)
Contains powerful grease cutters
Convenient (kitchen) (floor) (surface) (cleaner)
Disinfection for your kitchen
Easy to use (formula) (formulation) (refill)
Express Clean & Fresh
Faster to clean the next time

NOTE: Bracketed information is denoted as: << directive >>, { insert as noted }, (optional text), [required qualifier].

The term "this product" used throughout this document may be replaced with the marketed product brand name.

To use the term "germ**" the product must be efficacious against 2 of the 3 major classes of organisms.

The product label must identify the specific bacteria, virus, fungus & mold.

The term 'x' is a place holder for a number between 1 to 99.

The term 'x' is a place holder for a number between 1 to 99.

<< PERFORMANCE CLAIMS >>

Cleans everyday kitchen messes in seconds
Cleans the first time, every time
Cuts cleaning time
Cuts grease fast
Destroys grease and grime fast
Improved {insert soils – See pg. 19} removal
Leaves ({insert surface / site – See pg. 19}) (surfaces) (clean) (deodorized) (and) (sparkling) (shining)
Leaves no (dull) (filmy) (sticky) residue
Makes your (cleaning) job easier in the kitchen
(Now) Better than ever on grease
(Now) Cleans (tough) grease better than ever (before)
Powers through your toughest cleaning jobs
Removes tough stains the first time
Starts to work before you do
Tough on greasy soils

<< USAGE CLAIMS >>

A (disinfectant) (disinfecting) cleaner for use (in the kitchen) (on) (the) ({insert surface / site / soil – See pg. 19})
An (antibacterial) (disinfectant) (disinfecting) cleaner for use (in the kitchen) (on) (the) ({insert surface / site / soil – See pg. 19})
An effective (kitchen) (cleaner) (disinfectant) (sanitizer) on non-food contact surfaces.
An effective disinfecting cleaner for use (in the kitchen) on {insert surface / site / soil – See pg. 19}
Antibacterial cleaning action (in the kitchen) (for use on) ({insert surface / site / soil – See pg. 19})
Effectively works on many hard, non-porous surfaces
Fast / Easy / Effective: Use (in the kitchen) (on) (the) {insert surface / site / soil – See pg. 19}
For any hard, non-porous surface where (bacteria) (germs) are a concern
For everyday kitchen messes
For multiple cleaning tasks
(Good) (Great) for (everyday) (multiple) (cleaning) (and) (for your toughest messes) (jobs) (tasks) (chores)
Great for everyday use (in the kitchen) (on) {insert surface / site / soil – See pg. 19}
Great for use on hard, non-porous surfaces (in the kitchen)
(Intended) For use (only) (on) (in) {insert use site / surface – See pg. 19}
Keep your (kitchen) ({insert surface / site – See pg. 19}) clean every day
Perfect for use (on) (the) {insert surface / site / soil – See pg. 19}
Perfect for everyday use on {insert surface / site / soil – See pg. 19}
Quick cleaning (on) (the) ({insert surface / site – See pg. 19})
Use on {insert surfaces / site / soils – See pg. 19}
Use (this product) to clean {insert surface / site / soil – See pg. 19}
Where to use: {insert surface / site – See pg. 19}
Works on a wide range of kitchen surfaces

NOTE: Bracketed information is denoted as: << directive >>, { insert as noted }, (optional text), [required qualifier].
The term "this product" used throughout this document may be replaced with the marketed product brand name.
To use the term "germ*" the product must be efficacious against 2 of the 3 major classes of organisms.
The product label must identify the specific bacteria, virus, fungus & mold.
The term 'x' is a place holder for a number between 1 to 99.

<< NOTE: ALL SUPPORTING CLAIM QUALIFIERS – must appear before 'Directions For Use' on Back Panel label >>

<< CLEANING / DEODORIZING CLAIMS >>

(Effective) (Effectively) (Effortlessly) (Quickly) (Fast)
(Cleans) (Cuts) (Cuts through) (Degreases) (Destroys) (Dissolves) (Eliminates) (Penetrates) (Powers away)
(Powers through) (Removes)
(the following) (tough) (the toughest) (even the toughest) (stubborn) (everyday) (kitchen)
(baked on) (burnt on) (food) (grease) (grease and grime) (dirt and grime) (stains) ({insert surface / site / soil – See pg. 19})
(without streaking) (and) (with no bleach)

(x%) Better at (cutting) (removing) (eliminating) (tough) (kitchen) grease)
(x%) Better than ever on (tough) grease
(x%) Better than ever on (tough) (baked on) (burnt on) (grease) (food)

3X Cleaning Power

3X (the) Cleaning Power on {insert soils – See pg. 19}

3X Cleaning Power vs. (Lysol® All Purpose Cleaner with Bleach) ({777-83 Product name})

(This product) has 3X Cleaning Power to remove {insert soils – See pg. 19}

This product has 3X Cleaning Power to remove Grease, Food Stains (&) Grime

(This product) has the cleaning power to remove {insert soils – See pg. 19}

Advanced cleaning power formula

Antibacterial cleaning action (on hard, non-porous surfaces) for kitchens.

Antibacterial glass and surface cleaner

Better grease – fighting power!

Better grease – fighting power than before

Better grease – fighting power than ever

Better grease removal!

Better grease removal than before

Better grease removal than ever

Better than ever (grease cutter) (stain fighter) (on tough grease)

Better than ever on grease

Cleans x (countertops) (square fee) (area)

Cleans {insert soils – See pg. 19} x% faster

Cleans ({insert surfaces / sites – See pg. 19}) (surfaces) to a streak-free shine (with no bleach) (without leaving a residue behind)

Cleans and (disinfects) (sanitizes) (kitchens) ({insert surface / site – See pg. 19})

Cleans and sanitizes non-food contact surfaces

Cleans and shines

Cleans and shines (many hard, non-porous surfaces) ({insert surfaces / sites – See pg. 19})

Cleans better than ever (before)

Cleans (kitchen) (grease) better than ever

Cleans (kitchen messes) (food spills)

Cleans (kitchen surfaces) (without leaving a dull residue behind) (fast)

(Cleans) (Removes) (Eliminates) (Destroys) stains

(Cleans) (Removes) (Eliminates) (Destroys) baked on food

(Cleans) (Removes) (Eliminates) (Destroys) burnt on food

Cleans (kitchen) (floor) surfaces to a streak-free shine

Cleans (tough) grease and grime

(Cleans) (disinfects) (sanitizes) (and) (removes offensive odors from) {insert surface / site / soil – See pg. 19}

(Cleans) (eliminates) stubborn (nasty) stains

Cleans everyday kitchen messes

Cleans kitchen surfaces

Cleans everyday (tough) kitchen messes (fast).

Cleans the toughest soils

Cleans to a brilliant shine

NOTE: Bracketed information is denoted as: << directive >>, { insert as noted }, (optional text), [required qualifier].

The term "this product" used throughout this document may be replaced with the marketed product brand name.

To use the term "germ*" the product must be efficacious against 2 of the 3 major classes of organisms.

The product label must identify the specific bacteria, virus, fungus & mold.

The term 'x' is a place holder for a number between 1 to 99.

<< CLEANING / DEODORIZING CLAIMS – continued >>

Cleans to a streak-free shine
Cleans tough messes fast
Cleans without leaving a dull residue behind
Complete Clean
Confidence in cleaning
Contains (powerful) (effective) (fast acting) grease cutters.
Controls (kitchen) odor-causing bacteria
(Cuts) (Cleans) (Controls) (Dissolves) grease (fast) (quickly).
(Cuts) (Cleans) greasy dirt and grime in kitchens (fast)
(Cuts) (Cleans) kitchen grime and soils (fast)
Cuts cleaning time
Cuts grease
Cuts grease x% better than the leading kitchen cleaner
Cuts grease and grime
Cuts through grease and grime
Cuts through (tough) kitchen (grease) (grime) (soils) (and) messes
Cuts tough grease
Degreases and deodorizes
~~Destroys and deodorizes as it cleans~~
(Destroys) (Cuts) (Powers through) (Removes) (tough) grease (and) grime
(Destroys) (Eradicates) (Powers away) (Powers through) (cleans) (wipes away) (removes) tough grease and grime
Destroys (stains) on impact
Destroys (the) tough(est) {insert soils – See pg. 19}
Easily removes food stains like {insert soils – See pg. 19}
Effective – prevents mold and mildew stains.
Effortlessly removes stubborn (nasty) stains
Eliminates food odors (like garlic) left behind (on food surfaces) (after cooking)
Eliminates grease without streaking
(Eliminates) (Removes) tough odors (left behind) (from) (pets) (smoke) (cooking)
Eliminates stains
Eliminates tough (kitchen) grease and grime
Even the (toughest) (kitchen) (grease) ({insert soils – See pg. 19}) disappear right before your eyes
For a beautiful streak-free shine, just spray and wipe clean with a (paper towel) (cloth).
For a better (4 in 1) (kind of) clean
Freshens {insert surface / site – See pg. 19}
Gives you streak-free cleaning (on most kitchen surfaces from appliances to greasy stovetops)
Gives you streak-free shine while it cleans
Gives you the power of specialty cleaners in one bottle
Glass and surface cleaner with antibacterial formula
Great on glass
Maximum cleaning power
No mix (cleaner) (cleaning)
Non-food contact surface sanitizing cleaner
(Penetrates) (Dissolves) (Removes) (Destroys) even the toughest {insert soils – See pg. 19}
(Penetrates) (Loosens) (Eliminates) (tough) stains (like) ({insert soils – See pg. 19})
(Penetrates) (and) Powers through (tough) grease (better than ever)
Penetrates and dissolves tough {insert soils – See pg. 19}
Powerful cleaning formula dissolves (tough) (stains) ({insert soils – See pg. 19})
Powers out {insert soils – See pg. 19}
(Powers through) (cuts) (cleans) (tough) (household) (messes) (including) (kitchen) (grease) (and) (grime) (stains)
(Powers through) (Eliminates) (Destroys) (tough) grease (and) grime
Powers through even your toughest messes in the kitchen
Powers through the toughest burnt on food
Powers through tough messes (including kitchen grease and grime).

NOTE: Bracketed information is denoted as: << directive >>, { insert as noted }, (optional text), [required qualifier].
The term "this product" used throughout this document may be replaced with the marketed product brand name.
To use the term "germ*" the product must be efficacious against 2 of the 3 major classes of organisms.
The product label must identify the specific bacteria, virus, fungus & mold.
The term 'x' is a place holder for a number between 1 to 99.

10/30

<< CLEANING / DEODORIZING CLAIMS – continued >>

Quickly cleans ({insert surface / site – See pg. 19}) (surfaces) to a streak-free shine (with no bleach)
(without leaving a residue behind)
Quickly degreases and deodorizes
(Quickly) (Destroys) (stubborn) (nasty) stains
(Quickly) (Effortlessly) (Removes) (Cleans) the following: {insert surface / site / soil – See pg. 19}
(Removes) (Cleans) the following: {insert surface / site / soil – See pg. 19}
(Removes) (Eliminates) {insert soils – See pg. 19}
(Removes) (Eliminates) Stains
Removes tough food stains
Removes tough dirt and grime
Removes (tough) (everyday) {insert soils – See pg. 19}
Sparkling shine
Stain fighting power (and complete disinfection)
Stains disappear before your eyes
Starts cleaning on contact
(Starts to) dissolve(s) {insert soils – See pg. 19} right before your eyes
Streak-free cleaning
Streak-free shine
Surface cleaner with antibacterial formula
(The) Toughest stains (instantly) disappear
(This product's formula) cleans and shines
Thoroughly cleans surfaces throughout the kitchen (to a streak-free shine)
Tough on (burnt on) (baked on) (food) (grease) (greasy soils)
Watch {insert soils – See pg. 19} (start to) disappear
Watch {insert soils – See pg. 19} (start to) (disappear) (dissolve) right before your eyes
Watch the toughest stains disappear
Wipes away everyday grease and grime

<< CLEANING CLAIMS – Non-Living Allergens†† >>

(Even) removes x% allergens††
(Reduces) (Removes) (x% of) (the most) (common) (household) (allergens) (around your home) (around your kitchen)
(around your bathroom) (on your floors) ††
(Reduces) (Removes) {insert allergens – See pg. 19}
Removes 90% of allergens††

<< SUPPORTING ALLERGEN REMOVAL CLAIM QUALIFIER >>

†† This product removes the following allergens: (cat dander) (cockroach debris) (cockroach matter) (cockroach particles)
(dog dander) (dust mite debris) (dust mite matter) (dust mite particles) (hair) (pet dander) (pet hair) (pollen particles).

NOTE: Bracketed information is denoted as: << directive >>, { insert as noted }, (optional text), [required qualifier].
The term "this product" used throughout this document may be replaced with the marketed product brand name.
To use the term "germ***" the product must be efficacious against 2 of the 3 major classes of organisms.
The product label must identify the specific bacteria, virus, fungus & mold.
The term 'x' is a place holder for a number between 1 to 99.

<< **SANITIZING CLAIMS – Hard, non-porous, non-food contact surface** >>

(A) Versatile and convenient sanitizer for hard, non-porous surfaces
An effective (fast acting) non-food contact surface sanitizer (for use on {insert surface / site – See pg. 19})
An effective non-food contact surface sanitizer for use in the kitchen
Cuts tough grease and grime and kills 99.9% of bacteria (in the kitchen) (on) ({insert surface / site – See pg. 19})***
Eliminates 99.9% of bacteria***
Eliminates 99.9% of (household) bacteria (in 30 seconds)***
Fast Acting Sanitizer
Great for use as a non-food contact surface sanitizer on {insert surface / site – See pg. 19}
Kills 99.9% of bacteria***
Kills 99.9% of bacteria for a deep down clean***
Kills 99.9% of bacteria for a healthy home (environment)***
Kills 99.9% of (household) bacteria (in 30 seconds)***
Sanitizes as it cleans
Sanitizes (and deodorizes) hard, non-porous surfaces throughout your kitchen
Sanitizes hard, non-food contact surfaces
Sanitizes (hard, non-porous surfaces) (in the kitchen)
Sanitizes ({insert surface / site – See pg. 19}) (non-food contact surfaces) in 30 seconds***
Sanitizes without bleaching

Kills 99.9% of the following (household) bacteria commonly found in kitchens on hard, non-porous surfaces in 30 seconds:
(Escherichia coli O157:H7) (and) (Salmonella enterica)

<< **SUPPORTING SANITIZING CLAIM QUALIFIER** >>

*** Kills 99.9% of (Escherichia coli O157:H7) (Enterococcus faecalis [VRE]) (Klebsiella pneumoniae) (Salmonella enterica) (Staphylococcus aureus) (Staphylococcus aureus [MRSA]) (and) (Streptococcus pyogenes) (on hard, non-porous surfaces) (in 30 seconds).

<< **DISINFECTING CLAIMS – Hard, non-porous surface** >>

<< **2009 PANDEMIC H1N1 CLAIMS** >>

Kills Pandemic 2009 H1N1 Influenza A Virus

Kills Pandemic 2009 H1N1 Influenza A Virus (formerly called Swine Flu)

Respiratory illnesses attributable to Pandemic 2009 H1N1 are caused by Influenza A Virus. This product (product name) is a broad-spectrum, hard surface disinfectant that has been shown to be effective against (Influenza A Virus tested and listed on the label) and is expected to inactivate all Influenza A Viruses including Pandemic 2009 H1N1 (formerly called Swine Flu).

(This product) has demonstrated effectiveness against Influenza A Virus and is expected to inactivate all Influenza A Viruses including Pandemic 2009 H1N1 Influenza A Virus.

(This product) has demonstrated effectiveness against (Influenza A Virus tested and listed on the label) and is expected to inactivate all Influenza A Viruses including Pandemic 2009 H1N1 (formerly called Swine Flu).

NOTE: Bracketed information is denoted as: << directive >>, { insert as noted }, (optional text), [required qualifier].
The term "this product" used throughout this document may be replaced with the marketed product brand name.
To use the term "germ***" the product must be efficacious against 2 of the 3 major classes of organisms.
The product label must identify the specific bacteria, virus, fungus & mold.
The term 'x' is a place holder for a number between 1 to 99.

<< **DISINFECTING CLAIMS – Hard, non-porous surface** >>

4-in-1 action (formula) kills 99.9% of germs**

A disinfecting (non-food contact surface) cleaner for use on {insert surface / site – See pg. 19}

Can help prevent cross-contamination of (household) bacteria*

Cleans and disinfects kitchens

(Controls) (Prevents) (Inhibits) (the growth of) mold and mildew

Disinfects (and) (deodorizes) hard, non-porous surfaces

Disinfects as it cleans

Effective against**: {insert micro-organism – See pg. 18}

Eliminates (kitchen) (odor-causing) bacteria*

Eliminates bacteria from (kitchen) surfaces.*

Eliminates (Kills) odors caused by (bacteria) (mold and mildew) (and) non-fresh foods)*

(Gives you) (full) (complete) (total) disinfection

Kills Avian Influenza A Virus on pre-cleaned (environmental) surfaces (in 30 seconds)

Kills (99.9% of) bacteria*

Kills (99.9% of) bacteria and viruses**

Kills (99.9% of) viruses and bacteria**

Kills (99.9% of) germs**

Kills (99.9% of) germs with (its) 4-in-1 action**

Kills (99.9% of) (E. coli) (Salmonella) ({insert micro-organisms – See pg. 18})

Kills (kitchen) (household) (odor-causing) bacteria*

Kills bacteria commonly found in the kitchen*

Kills bacteria for a deep down clean*

Kills (kitchen) germs**

Kills germs and controls the growth of mold and mildew**

Kills germs that ordinary cleaners don't**

Kills (household) bacteria (in 10 minutes) (commonly found in kitchens) (on hard, non-porous surfaces in 10 minutes)*

Kills (household) bacteria (and sanitizes without bleaching)*

(Kills) (Destroys) (Eliminates) germs (that ordinary cleaners don't)**

(Kills) (Eliminates) odor-causing bacteria in the kitchen

Kills bacteria commonly found in kitchens (in 10 minutes)*

Kills bacteria and viruses on hard, non-porous (kitchen) surfaces in 10 minutes**

Kills more than 99.9% of bacteria and viruses**

Kills more than 99.9% of viruses and bacteria**

Kills viruses†

Leaves a (long-lasting) (fresh) (clean) scent

Leaves your {insert surface / site – See pg. 19} with a fresh, clean scent

Quickly eliminates (foul) (filthy) (lingering) (food) odors

Removes bacteria*

Starts to kill on contact

Total disinfection for your kitchen surfaces

<< **SUPPORTING DISINFECTING CLAIM QUALIFIERS** >>

* Kills (99.9% of) (Campylobacter jejuni) (Enterococcus faecalis [VRE]) (Escherichia coli O157:H7) (Listeria monocytogenes) (Pseudomonas aeruginosa) (Salmonella enterica) (Staphylococcus aureus) (and) (Staphylococcus aureus [MRSA]) (on hard, non-porous surfaces) (in 10 minutes).

** Kills (99.9% of) (Campylobacter jejuni) (Enterococcus faecalis [VRE]) (Escherichia coli O157:H7) (Listeria monocytogenes) (Pseudomonas aeruginosa) (Salmonella enterica) (Staphylococcus aureus) (Staphylococcus aureus [MRSA]) (Herpes Simplex Virus Type 1 & 2) (Human Immunodeficiency Virus Type) (Influenza A2 Virus [Japan305/57]) (and) (Avian Influenza A [H1N1] Virus) (on hard, non-porous surfaces) (in 10 minutes).

† Kills (99.9% of) (Herpes Simplex Virus Type 1 & 2) (Human Immunodeficiency Virus Type 1) (Influenza A2 Virus [Japan 305/57]) (and) (Avian Influenza A Virus [H1N1]) (on hard, non-porous surfaces) (in 10 minutes).

NOTE: Bracketed information is denoted as: << directive >>, { insert as noted }, (optional text), [required qualifier].
The term "this product" used throughout this document may be replaced with the marketed product brand name.
To use the term "germ**" the product must be efficacious against 2 of the 3 major classes of organisms.
The product label must identify the specific bacteria, virus, fungus & mold.
The term 'x' is a place holder for a number between 1 to 99.

13/34

<< Additional CLAIMS / USE DIRECTIONS – Specific to Professional Branded products Only >>

<< MARKETING CLAIMS >>

NOTE: The terms cafeteria, kitchen and break room may be used interchangeably in any of the listed claims found throughout this document for Professional Use branded products.

(Hospital) (Institutional) (Industrial) (Commercial) (Professional) (Kitchen) (Cafeteria)
(Cleaner) (Deodorizer) (Disinfectant) (Sanitizer)
Formulated for (hospital) (institutional) (industrial) (commercial) (professional) use
Formulated for medical institution's (infection control program) needs
Meets AOAC Germicidal Spray Products efficacy test standards for hospital disinfectants

<< PROFESSIONAL USE SITES >>

Break Room	Health Care Facility	Office Building
Cafeteria	Hospital	Physicians Office
Day Care Center	Hotel / Motel	Restaurant
Dental Office	Kitchen	School (College)
Doctors Office	Nursing Home	

<< Terminal Sterilant Statement – qualified metal surfaces >>

This product is not for use on critical & semi-critical medical devices or medical equipment surfaces.

<< Terminal Sterilant Statement – unqualified metal surfaces >>

This product is not to be used as a terminal sterilant / high level disinfectant on any surface or instrument that ⁽¹⁾ is introduced directly into the human body, either into or in contact with the bloodstream or normally sterile areas of the body; or ⁽²⁾ contacts intact mucous membranes but which does not ordinarily penetrate the blood barrier or otherwise enters normally sterile areas of the body. This product may be used to pre-clean or decontaminate critical or semi-critical medical devices prior to sterilization or high level disinfection.

KILLS HUMAN IMMUNODEFICIENCY VIRUS TYPE 1 [HIV-1 AIDS Virus] ON PRE-CLEANED ENVIRONMENTAL SURFACES / OBJECTS PREVIOUSLY SOILED WITH BLOOD / BODY FLUIDS, in health care settings or other settings in which there is an expected likelihood of soiling of inanimate surfaces / objects with blood or body fluids; and in which the surfaces / objects likely to be soiled with blood or body fluids can be associated with the potential for transmission of Human Immunodeficiency Virus Type 1 [HIV-1] [associated with AIDS].

SPECIAL INSTRUCTIONS FOR CLEANING AND DECONTAMINATION AGAINST HIV-1 OF SURFACES / OBJECTS SOILED WITH BLOOD / BODY FLUIDS:

PERSONAL PROTECTION: When handling items soiled with blood or body fluids, use disposable latex gloves, gowns, masks and eye coverings.

CLEANING PROCEDURES: Blood and other body fluids must be thoroughly cleaned from surfaces and objects before application of this product.

CONTACT TIME: Allow surface / object to remain wet for ~~90 seconds~~.

DISPOSAL OF INFECTIOUS MATERIALS: Blood and other body fluids must be autoclaved and disposed of according to local regulations for infectious waste disposal.

NOTE: Bracketed information is denoted as: << directive >>, { insert as noted }, (optional text), [required qualifier].
The term "this product" used throughout this document may be replaced with the marketed product brand name.
To use the term "germ***" the product must be efficacious against 2 of the 3 major classes of organisms.
The product label must identify the specific bacteria, virus, fungus & mold.
The term 'x' is a place holder for a number between 1 to 99.

14/39

<< USE DIRECTIONS >>

DIRECTIONS FOR USE: It is a violation of Federal law to use this product in a manner inconsistent with its labeling.

To Operate: Turn nozzle counter clockwise to preferred usage.

To Operate: Turn nozzle to ("ON") (desired) position.

(To Operate:) To Open: Lift tab up, push back and press tab down to lock into open position.

To Close: Release tab from locked position, push tab down and snap closed.

To Refill (Bottle): Remove trigger sprayer. Pour in product from refill container and replace trigger.

To Refill (Bottle): Remove trigger unit from empty bottle and attach to new bottle.

To Clean (/ Deodorize) (/Remove Allergens††): Once automatic dispensing unit has applied product to (sponge) (cloth) (towel) wipe surface until thoroughly wet. Wipe with a clean cloth or sponge. No rinsing required.

To Clean (/ Deodorize) (/ Remove Allergens††): (Spray) (Apply to) surface until thoroughly wet. Wipe with a clean cloth or sponge. No rinsing required.

To Clean Greasy Soil: Allow product to sit 15-20 seconds to penetrate soil before wiping clean. Repeat if necessary.

To Clean (Household) (and) (Kitchen) Surfaces: (Spray) (Apply to) dirty (soiled) area, wipe clean. No rinsing required.

To Sanitize / Disinfect: Pre-clean surface. (Spray) (Apply to) surface until thoroughly wet.

To Sanitize: Leave for 30 seconds before wiping. **To Disinfect:** Leave for 10 minutes before wiping.

Rinse all food contact surfaces with water after use.

To Control (and Prevent) (the Growth of) Mold & Mildew: Apply to pre-cleaned surface. Let surface remain wet for 3 minutes and then allow to air dry. Repeat application at weekly intervals or when mold and mildew growth appears.

<< Advisory Statements – must be included were appropriate >>

Can be used in cleaning tools that recommend the use of (this product).

(Does not) (Will not) harm most (kitchen) surfaces.

On painted surfaces test a small inconspicuous area first.

This product is not recommended for use on (natural) (marble) (brass) (acrylic plastic) or (finished wood surfaces).

Do not use on (eating / cooking utensils, glasses / dishes or cookware) (unfinished, oiled or waxed wood floors) (outdoor patio furniture cushions and pillows).

NOTE: Bracketed information is denoted as: << directive >>, { insert as noted }, (optional text), [required qualifier].
The term "this product" used throughout this document may be replaced with the marketed product brand name.
To use the term "germ**" the product must be efficacious against 2 of the 3 major classes of organisms.
The product label must identify the specific bacteria, virus, fungus & mold.
The term 'x' is a place holder for a number between 1 to 99.

15/39

<< LYSOL® AUTOMATIC DISPENSING UNIT - Includes: Dispenser, (product name) Refill and 4 AA batteries >>

Assembly:

1. Open battery door (as shown) then insert 4 AA batteries (included).
2. Close battery door, pressing firmly on the tab to ensure it is fully closed.
3. Remove seal from (product name) refill.
4. Insert (product name) refill into the dispenser until you hear it CLICK into place.
5. Place dispenser on the counter (where you will use it).
6. Turn unit ON using the ON/OFF switch on the back of the dispenser.
7. Wait until the RED indicator light at the front stops blinking. Dispenser is now ready for use.

To Use:

Place (sponge) (cloth) (towel) underneath the nozzle. Ensure (sponge) (cloth) (towel) is placed between the nozzle and the indicator light. You may need to move (sponge) (cloth) (towel) under nozzle several times before first dispense. The dispenser will automatically dispense just the right amount of product on your (sponge) (cloth) (towel).

Replacing the Refill:

Turn OFF the dispenser by using the ON/OFF switch. Press the EJECT button at the back of dispenser and remove the empty bottle. Replace only with (this product) refill. Be sure to remove the seal from (the) refill cap before use.

Replacing the Batteries:

When the batteries have run out, the RED indicator light will flash 6 times. For best results, replace with a new set of 4 AA alkaline batteries.

Maintaining Your Dispenser:

- DO NOT place the dispenser in standing water, under running water or inside the dishwasher. If you do so, the unit may no longer function.
- If the dispenser requires cleaning, switch unit OFF, then wipe dispenser with a damp non-abrasive cloth and dry thoroughly.
- Ensure lens on underside of nozzle is free from product build-up as this may unintentionally activate sensor.
- DO NOT place the dispenser in direct sunlight.

Troubleshooting:

1. If the dispenser does not turn ON:
 - Check that the batteries are inserted in the correct orientation.
 - If the batteries are inserted correctly, the light in front of the dispenser will flash for a few seconds and stop when it is switched ON and ready for use.
2. If the dispenser does not dispense properly OR does not dispense any product at all:
 - Ensure (sponge) (cloth) (towel) is placed between the nozzle and the indicator light (see diagram).
 - Switch dispenser to OFF. Clean as described in the section 'Maintaining Your Dispenser'.
 - Check to see if dispenser is standing in water. If so, the unit may no longer function; however, try removing the battery door, wiping and drying the interior thoroughly, then re-inserting the batteries.
3. If product is dispensing unintentionally, see 'Maintaining Your Dispenser'.

IMPORTANT:

- DO NOT hold the dispenser from the front middle while it is switched ON; as this will activate the sensor and product will be dispensed onto your hand.
- Before cleaning your counter where the dispenser has been placed, turn the dispenser OFF before moving to prevent product from accidentally dispensing.
- Use only (product name) refills in the dispenser.
- Contains batteries. Do not reuse batteries. Batteries contain 0% Mercury / 0% Lead / 0% Cadmium.

(Optional graphics – See pg. 22)

NOTE: Bracketed information is denoted as: << directive >>, { insert as noted }, (optional text), [required qualifier].
The term "this product" used throughout this document may be replaced with the marketed product brand name.
To use the term "germ***" the product must be efficacious against 2 of the 3 major classes of organisms.
The product label must identify the specific bacteria, virus, fungus & mold.
The term 'x' is a place holder for a number between 1 to 99.

16/34

<< Additional CLAIMS / USE INSTRUCTIONS – Specific to Liquid Dispensing Mop / Device / Appliance >>

<< Marketed Product Name(s) >>

Lysol Brand II Kills 99.9% of Viruses & Bacteria** Duo-Mop Starter Kit All-In-One Mopping System
Lysol Brand II Kills 99.9% of Viruses & Bacteria** Duo-Mop Disinfecting Cleaner – Citrus Scent

<< Starter Kit >>

Contents:

- (1) (-) Liquid Dispensing Mop with Scrubbing Bristles
- (x) (-) Absorbent Cleaning Pads
- (1) (-) (Bottle of) Lysol[®] (Disinfecting) (Antimicrobial) (Multi-Purpose) Cleaner [(16.9 FL. OZ.) (500 mL) (x FL. OZ.) (x mL)]

(Assembly Instructions:) (Getting Started:) (To Assemble:)

- (Pull handle to fully extend pole.)
- (Line up the poles and push together to lock (permanently) into place.)
- (Pull (folded) handle up) (Unfold handle) and lock into place)

(Directions:)

- (Step(s)) (1) (2) (3) (4) (5) (6) (7) (8) (9)
- (Assemble) (Assembly) (Apply) (Load) (Mop) (Toss)
- (Spray) (Flip) (Scrub) (Rotate)
- (This side) (Towards) (Pole) (Handle)

(Apply:) Attach the pad with the marked side facing the (mop) (device) head.

(Load:) Do not remove cap. Insert the bottle by lining up the (arrow on the) (grooved side) (indented side) (slotted side) (dimpled side) (arrow) with the (pole) (handle).
Push the bottle into the (appliance) (device) (mop) until it (is secure) (clicks into place).

(Mop:) Spray the solution (by pulling the trigger) (with the trigger).

General Cleaning: Use the liquid dispensing mop to spray floor until thoroughly wet, then mop and remove excess liquid. No need to rinse.

To Disinfect: For use on hard, non-porous floors. Use the liquid dispensing mop to spray floor until thoroughly wet. Let stand for 10 minutes before mopping, then remove excess liquid. For heavily soiled floors, clean before following disinfecting instructions.

(Toss:) Discard used (floor) (cleaning) pad in trash can.

DO NOT dispose (of) (floor) (cleaning) pad in toilet. (Bottle can be recycled.)

To Use Scrubbing (bristles) (brush) (and) (To get into scrubbing mode) (for (tough) (spot) cleaning):

Pull the mop towards you and (lift) (raise) off floor (to flip the head) (and) (to) (lock) (in) (get into) (scrub) (scrubbing) (mode).

For extra scrubbing power or to clean sealed grout lines: (twist) (rotate) the center (scrubbing) (bristles) (brush). When done, (simply) (rotate) (twist) (the) (center) (scrubbing) (bristles) (brush) back (before (unlocking) (pushing) the (mop) (head) (back) down) (to get out of scrubbing mode) (to go back to mopping mode).

(To get out of scrubbing mode) (To go back to mopping mode) (To Release):

(Lift) (raise) the mop off the floor (to flip the head back down) (and) (to) go back to mopping (mode).

(To go back to mopping (mode) (just) (lift) (raise) the mop off the floor (to flip the head back down) (and) (to) (release).

(Push down on (pole) (handle) to lock the (mop) (head) into place.)

(To (unlock) (release) (lift off floor) (to flip) (kick or push) the (mop) (head) (back down).)

NOTE: Bracketed information is denoted as: << directive >>, { insert as noted }, (optional text), [required qualifier].
The term "this product" used throughout this document may be replaced with the marketed product brand name.
To use the term "germ***" the product must be efficacious against 2 of the 3 major classes of organisms.
The product label must identify the specific bacteria, virus, fungus & mold.
The term 'x' is a place holder for a number between 1 to 99.

17/30

<< Additional CLAIMS / USE INSTRUCTIONS – Specific to Liquid Dispensing Mop / Device / Appliance >>

<< Liquid Refills >>

(Net Contents:) 16.9 FL. OZ. (500 mL)
42.2 FL. OZ. (1.32 QTS.) (1.25 L)
(x FL. OZ.) (x mL) (x L)

(Directions:)
(Step(s)) (1) (2) (3) (4) (5) (6) (7) (8) (9)
(Assemble) (Assembly) (Apply) (Load) (Mop) (Toss)
(Spray) (Flip) (Scrub) (Rotate)
(This side) (Towards) (Pole) (Handle)

Do not remove cap. Use with (this product – Starter Kit)
(Insert) (Load) the bottle by lining up the (arrow on the) (grooved side) (indented side) (slotted side) (dimpled side) (arrow)
with the (pole) (handle). Push the bottle into the (appliance) (device) (mop) until it is secure.
General Cleaning: Use the liquid dispensing mop to spray floor until thoroughly wet, then mop and remove excess liquid.
No need to rinse.
To Disinfect: For use on hard, non-porous floors. Use the liquid dispensing mop to spray floor until thoroughly wet.
Let stand for 10 minutes before mopping, then remove excess liquid. For heavily soiled floors, clean before following
disinfecting instructions.

<< Pad Refills >>

(Net Contents:) (x OZ.) (x LB x OZ.) (x g.) TOTAL: (x OZ.) (x LB x OZ.) (x g.)
5-1/2" x 11-1/2" (Pad) (Refill)
x (Refills) (Pads)
x Pad Refills

(Directions:)
(Step(s)) (1) (2) (3) (4) (5) (6) (7) (8) (9)
(Assemble) (Assembly) (Apply) (Load) (Mop) (Toss)
(Spray) (Flip) (Scrub) (Rotate)
(This side) (Towards) (Pole) (Handle)

(Apply:) Attach the pad with the marked size facing the (mop) (device) head.
(Mop:) Spray the solution (by pulling the trigger) (with the trigger).
General Cleaning: Use the liquid dispensing mop to spray floor until thoroughly wet, then mop and remove excess
liquid. No need to rinse.
To Disinfect: For use on hard, non-porous floors. Use the liquid dispensing mop to spray floor until thoroughly wet.
Let stand for 10 minutes before mopping, then remove excess liquid. For heavily soiled floors, clean before following
disinfecting instructions.
(Toss:) Discard used (floor) (cleaning) pad in trash can. DO NOT dispose (of) (floor) (cleaning) pad in toilet.

NOTE: Bracketed information is denoted as: << directive >>, { insert as noted }, (optional text), [required qualifier].
The term "this product" used throughout this document may be replaced with the marketed product brand name.
To use the term "germ*" the product must be efficacious against 2 of the 3 major classes of organisms.
The product label must identify the specific bacteria, virus, fungus & mold.
The term 'x' is a place holder for a number between 1 to 99.

18/31

<< Additional CLAIMS / USE INSTRUCTIONS – Specific to Liquid Dispensing Mop / Device / Appliance >>

<< Advisory Statements >>

Bottle fits Lysol® (product name) (and) (other) (regular) (leading) (liquid dispensing) (mops) (floor) (care) (products) (devices) (appliances) (only).

Can be used in cleaning (products) (devices) (tools) that recommend (the) (its) use (of (this product)).

(Can be used with leading liquid dispensing (mops) (floor) (care) (products) (devices) (appliances).)

This cleaner is a specially designed no-mixing, no-rinsing solution for use with (this) (this product) (mopping system).

This product is not for use on (unfinished, oiled or waxed wooden boards) (non-sealed tiles) (and) (or) (carpeted floors) (because they may be water sensitive).

Use with Lysol® (product name) (and) (or) (other) (regular) (leading) (liquid dispensing) (mops) (floor) (care) (products) (devices) (appliances)

<< Marketing Claims (Starter Kit) (Liquid Refills) (Pad Refills) >>

Also try (Lysol®) (:

(Absorbent) Pad(s) (Refill(s))

Clean-Flip Sweeper and Cloths

Disinfecting cleaner (refill(s))

Disinfecting Wet Cloths

Multi-Purpose Cleaner (refill(s))

Sponges

Variety of Lysol® products available:

(Absorbent) (Disposable) (Reusable) (Mopping) (Floor) (Cleaning) (Pad(s)) (Refill(s))

(and) (Disinfecting) (Antibacterial) (Multi-Purpose) (Liquid) (Floor) (Cleaner) (Refill(s)) (available) (separately)

A liquid dispensing mop with more (flexible) scrubbing (bristle(s)) (power)

Absorbent (mopping) (pads) (- quickly absorbs spills and traps dirt)

Acceptable for use on (finished) (wood***) (laminated) (vinyl) (linoleum) (sealed (marble) (stone)) (glazed ceramic tile) (and) (glazed tile)

Advanced floor cleaner

All-In-One Liquid Dispensing (Mop) (Mopping System) (with scrubbing bristles) (with scrub brush) (with brush for (added) (intense) scrubbing)

(All-In-One) (Sweeping) (and) (Mopping) (and) (Scrubbing) (System)

All-In-One mopping (and Scrubbing) System

Bottle fits (Lysol® Duo-Mop All-In-One Liquid Dispensing) (Mop) (Mopping) System(s)) (this product)

Center (scrubbing) (bristles) (brush) rotate for (extra) (scrubbing) (power) (stubborn stains)

(Cleaner in a) Ready-to-use (bottle)

Cleans (approximately) (about) (x) rooms

Cleans (virtually) all floor types (-) (including) (finished) (wood***) (laminated) (vinyl) (linoleum) (sealed (marble) (stone)) (glazed ceramic tile) (and) (glazed tile)

Cleans scuff marks, sticky dirt, dried-on food stains and greasy messes

(Combination) broom (and) (liquid dispensing) (mop) (in one)

(Contains) Everything you need to get started (!)

NOTE: Bracketed information is denoted as: << directive >>, { insert as noted }, (optional text), [required qualifier].
The term "this product" used throughout this document may be replaced with the marketed product brand name.
To use the term "germ***" the product must be efficacious against 2 of the 3 major classes of organisms.
The product label must identify the specific bacteria, virus, fungus & mold.
The term 'x' is a place holder for a number between 1 to 99.

19/3P

<< Additional CLAIMS / USE INSTRUCTIONS – Specific to Liquid Dispensing Mop / Device / Appliance >>

<< Marketing Claims (Starter Kit) (Liquid Refills) (Pad Refills) – continued >>

Deep (down) cleaning
(Dirt-dissolving) cleaning solution
Dissolves tough, sticky messes
Dries fast (with virtually no streaks (or hazing))

(For money back guarantee) Mail the original UPC and purchase receipt (within 30 days of purchase)
From the Makers of Lysol® Brand Duo-Mop Absorbent Pad Refills

Get any floor (deep) (shiny) (sparkling) (clean) with (this product) (!)
Gets into corners (edges) (and) (hard-to-reach spots)
Good for use on (finished) (wood***) (laminated) (vinyl) (linoleum) (sealed (marble) (stone)) (glazed ceramic tile) (and) (glazed tile)
Great for use on (finished) (wood***) (laminated) (vinyl) (linoleum) (sealed (marble) (stone)) (glazed ceramic tile) (and) (glazed tile)
Guaranteed (or your money back) (See (insert website) for details)

Ideal for (finished) (wood***) (laminated) (vinyl) (linoleum) (sealed (marble) (stone)) (glazed ceramic tile) (and) (glazed tile)

Money back guarantee (See (insert website) for details)
(Mop) head (pivots) (flips) (and) (locks) to scrub (dried-on messes) (and) (sealed grout lines)

No batteries (or cords) required
(No-scratch) Scrubbing (power) (pad) (brush) (bristles)

Pad fits Lysol® Duo-Mop (All-In-One Liquid Dispensing (Mop) (Mopping System) (and) Swiffer® WetJet™ (All-In-One) (Power Mop) (this product))
Pad traps (and) (locks) (away) dirt (and) (&) (grime) (your mop can push around)
(Pre-mixed) (cleaner) (cleaning solution) (dissolves tough) (greasy) (sticky) (stains) (messes) (and) (dirt)
(Pre-mixed) (solution) (dissolves tough) (greasy) (stains) (and) (sticky) (dirt) (messes)
Pulls and locks away dirt (and) (&) grime

NOTE: Bracketed information is denoted as: << directive >>, { insert as noted }, (optional text), [required qualifier].
The term "this product" used throughout this document may be replaced with the marketed product brand name.
To use the term "germ**" the product must be efficacious against 2 of the 3 major classes of organisms.
The product label must identify the specific bacteria, virus, fungus & mold.
The term 'x' is a place holder for a number between 1 to 99.

<< Additional CLAIMS / USE INSTRUCTIONS – Specific to Liquid Dispensing Mop / Device / Appliance >>

<< Marketing Claims (Starter Kit) (Liquid Refills) (Pad Refills) – continued >>

Ready-to-use cleaner

Refill Pad(s) (and Cleaners) (available)

Refills available

(Removable) (power) (long-handled) (spot) (scrubber) (scrub) (brush) (makes cleaning fast) (and easy)

(Removable) (scrubber) (scrub) (brush) powers through (dried-on) messes

Reusable (Microfiber) (Pads)

Rotate the (center) (scrubbing) (bristles) (scrub) (brush) for deep cleaning (especially on sealed grout lines)

Scrub (though) (dried-on) (messes) (dirt) (stubborn stains) (stubborn messes)

(Scrubbing) (bristles) (brush) clean(s) dried-on messes (and) (sealed grout lines)

(Scrubbing bristles) (scrub brush) (for) (those) (stubborn) (dried-on) messes (and) (sealed grout lines)

(Scrubbing) (bristles) (brush) power(s) through dried-on messes (and) cleans sealed grout lines

(Scrubs) (and) (cleans) dried-on messes and sealed grout lines

Solution dissolves tough (sticky) messes

Start with a fresh, clean pad every time

(Starter kit) (includes Lysol® disinfecting cleaner) (and) (absorbent) (cleaning) (pad(s))

Suitable for (finished) (wood***) (laminate) (vinyl) (linoleum) (sealed (marble) (stone)) (glazed ceramic tile) (and) (glazed tile)

Suitable for (finished) wood***

(Super) (absorbent) (mopping) (drying) pad(s) (refill(s))

Tackles tough jobs (–) (scuff marks, sticky dirt, dried-on food stains and greasy messes)

Toss (away the dirt forever)

Tough on messes

(Tough) (Scrubbing bristles) (Scrub brush) remove(s) (even) greasy dirt and dried-on (messes) (dirt) (stains)

Traps (the) dirt (your mop can push around)

Use with (Lysol® Duo-Mop) (this product) (or) (regular all-in-one) (mops) (mopping) (systems) (Swiffer® WetJet†††)

Variety of products available

Visit {(website)} for details

Washable (cleaning) (microfiber) (floor) pads

Will not harm (finished) (wood***) (laminate) (vinyl) (linoleum) (sealed (marble) (stone)) (glazed ceramic tile) (and) (glazed tile)

(x) Pad(s) clean(s) about (x) rooms (or (x) Sq. Ft. (Sq. meters))

*** Do not use on visibly worn, unsealed, unfinished, waxed or oiled wood floors. If uncertain about your wood floor's finish, test (an) (a small) inconspicuous area prior to use. When using on wood floors, avoid letting cleaner puddle in an area and avoid prolonged contact of the cleaner on the floor surface.

††† Swiffer® is a registered trademark of Procter & Gamble Company. This product is not authorized, licensed, sponsored or endorsed by Procter & Gamble Company.

(Optional graphics – See pgs. 22-23)

NOTE: Bracketed information is denoted as: << directive >>, { insert as noted }, (optional text), [required qualifier].
The term "this product" used throughout this document may be replaced with the marketed product brand name.
To use the term "germ***" the product must be efficacious against 2 of the 3 major classes of organisms.
The product label must identify the specific bacteria, virus, fungus & mold.
The term 'x' is a place holder for a number between 1 to 99.

21/39

This product has been test and found effective against the following micro-organisms:

Bacteria / Virus & Fungi		
<< Disinfection – Hard, non-porous surfaces >>		
Bacteria (10 minutes)	(ATCC No.)	
Campylobacter jejuni	(29428)	
Enterococcus faecalis [VRE]	(51299)	(Vancomycin Resistant)
Escherichia coli O157:H7	(43888)	
Listeria monocytogenes	(7644)	
Pseudomonas aeruginosa	(15442)	
Salmonella enterica	(10708)	
Staphylococcus aureus	(6538)	
Staphylococcus aureus [MRSA]	(33592)	(Methicillin Resistant)
Viruses (10 minutes)	(ATCC No.)	
Herpes Simplex Virus Type 1	(VR-733)	
Herpes Simplex Virus Type 2	(VR-734)	
Human Immunodeficiency Virus Type 1	n/a	(HIV-1 AIDS Virus)
Influenza A2 Virus [Japan 305/57]	(VR-100)	(flu virus)
(Avian) Influenza A (H1N1) Virus	(VR-98)	(Strain A/Malaya/302/54)
<< Mildew Fungistat – Hard, non-porous, non-food contact surfaces >>		
Fungi (3 minutes)	(ATCC No.)	
Aspergillus niger	(6275)	(mold & mildew)
<< Sanitization – Hard, non-porous, non-food contact surfaces >>		
Bacteria (30-seconds)	(ATCC No.)	
Enterococcus faecalis [VRE]	(51299)	(Vancomycin Resistant)
Escherichia coli O157:H7	(43888)	
Klebsiella pneumoniae	(4352)	
Salmonella enterica	(10708)	
Staphylococcus aureus	(6538)	
Staphylococcus aureus [MRSA]	(33592)	(Methicillin Resistant)
Streptococcus pyogenes	(12384)	

Symbol Designation – used on product labels		
Single asterisk (*)	Bacteria *	Used for identifying disinfection against specific bacteria
Dagger (†)	Viruses †	Used for identifying disinfection against specific viruses
Double asterisk (**)	Germ **	Used for identifying disinfection against specific bacteria & viruses / fungi
Triple asterisk (***)	Sanitizes ***	Used for identifying sanitization <u>against specific bacteria</u>
Double dagger (††)	Allergens ††	Used for identifying the removal of specific non-living allergens

NOTE: Bracketed information is denoted as: << directive >>, { insert as noted }, (optional text), [required qualifier].
The term "this product" used throughout this document may be replaced with the marketed product brand name.
To use the term "germ***" the product must be efficacious against 2 of the 3 major classes of organisms.
The product label must identify the specific bacteria, virus, fungus & mold.
The term 'x' is a place holder for a number between 1 to 99.

<< SOILS / ODORS / SURFACES / USE SITES - May be listed on product label in the singular / plural form >>

Soils / Odors: (Graphic – depicting soil)

Bacon fat	Food odors	Outdoor grime
Beverage stains	Food stains	Pancake mix
Blood stains	Gravy	Pen / Ink marks
Burnt / Baked on food	Grease (splatter)	Pet odors
Coffee	Grime	Pet stains
Cooking / Smoke odors	Hard Water stains	Stains / Soils
Cosmetic stains	Heel / Scuff marks	Smears / Smudges
Crayon / Pencil marks	Juice / Wine stains	Tea
Dirt (greasy dirt)	Lime scale	Tomato sauce
Eggs	Mud	Tough stains / soils
Fingerprint / Handprint	Oil	

Non-living Allergens:

<u>Cat dander</u>	<u>Dog dander</u>	Hair
Cockroach debris	Dust mite debris	Pet dander
Cockroach matter	Dust mite matter	Pet hair
Cockroach particles	Dust mite particles	<u>Pollen particles</u>

Non-Food Contact Surface Types: (~ specify Non-Medical or Fixture)

Chrome ~	Glass	Metal (Tin)
Copper	Glazed ceramic	Mirror
Crystal	Glazed porcelain	Plastic laminate
Enamel	Glazed tile	Stainless steel ~
Fiberglass <u>fixtures</u>	Linoleum	Vinyl

Hard Non-porous Surfaces: (Graphic – depicting use site)

Appliance exterior	Glass topped furniture	Picnic table (non-wood)
Cabinet (non-wood)	Glazed ceramic tile	Plastic laundry (basket) (hamper)
Chair (non-wood)	Glazed porcelain tile	Range hood (stove hood)
Computer screen	Grill (Bar-B-Que) exterior	Refrigerator / Freezer exterior
Counter (Countertop)	Highchair (non-food contact area)	Shelves (drawers)
Door knob (handle)	Light fixture	Sink (basin)
Exhaust (fan) (hood)	Metal blinds	Stove (stovetop)
Faucet	Microwave exterior	Table (tabletop) (non-wood)
Fixture (chrome / stainless steel)	<u>Non-medical (chrome / stainless steel)</u>	Telephone
Floor (<u>glazed tile</u>)	Outdoor patio furniture (non-wood)	<u>Television screen</u> (TV screen)
Floor (linoleum)	Oven (door)	Washable (walls) (wallpaper)
Floor (vinyl)	Painted woodwork	Water fountain
Garbage (can) (pail) (container)	Patio door	Window (windowsill)

Professional Use Sites:

Break Room	Health Care Facility	Office Building
Cafeteria	Hospital	Physicians Office
Day Care Center	Hotel / Motel	Restaurant
Dental Office	Kitchen	School (College)
Doctors Office	Nursing Home	

NOTE: Bracketed information is denoted as: << directive >>, { insert as noted }, (optional text), [required qualifier].
The term "this product" used throughout this document may be replaced with the marketed product brand name.
To use the term "germ***" the product must be efficacious against 2 of the 3 major classes of organisms.
The product label must identify the specific bacteria, virus, fungus & mold.
The term 'x' is a place holder for a number between 1 to 99.

23/30

<< PRECAUTIONARY / FIRST AID / CHEMICAL HAZARD / STORAGE & DISPOSAL INSTRUCTIONS >>

PRECAUTIONARY STATEMENTS: Hazards to Humans and Domestic Animals

WARNING: Causes substantial but temporary eye injury. Do not get in eyes, on skin or on clothing. Wash thoroughly with soap and water after handling and before eating, drinking, chewing gum or using tobacco. Prolonged or frequently repeated skin contact may cause allergic reactions in some individuals.

<< Trigger bottle >>

FIRST AID	
If in eyes	<ul style="list-style-type: none">• Hold eye open and rinse slowly and gently with water for 15-20 minutes.• Remove contact lenses, if present, after the first 5 minutes, then continue rinsing eye.• Call a Poison Control Center or doctor for treatment advice.
CONTACT NUMBER	
Questions? Comments or In case of an emergency, call toll free (1-800-228-4722) (1-800-677-9218). Have the product container or label with you when calling a Poison Control Center, or doctor, or going for treatment.	

<< Pourable bottle >>

FIRST AID	
If in Eyes	<ul style="list-style-type: none">• Hold eye open and rinse slowly and gently with water for 15-20 minutes.• Remove contact lenses, if present, after the first 5 minutes, then continue rinsing eye.• Call a Poison Control Center or doctor for treatment advice.
If on Skin or Clothing	<ul style="list-style-type: none">• Take off contaminated clothing.• Rinse skin immediately with plenty of water for 15-20 minutes.• Call a Poison Control Center or doctor for treatment advice.
If Swallowed	<ul style="list-style-type: none">• Call Poison Control Center or doctor immediately for treatment advice.• Have person sip a glass of water if able to swallow.• Do not induce vomiting unless told to do so by the Poison Control Center or doctor.• Do not give anything by mouth to an unconscious person
CONTACT NUMBER	
Questions? Comments or In case of an emergency call toll free (1-800-228-4722) (1-800-677-9218). Have the product container or label with you when calling a Poison Control Center or doctor, or going for treatment.	

NOTE: Bracketed information is denoted as: << directive >>, { insert as noted }, (optional text), [required qualifier].
The term "this product" used throughout this document may be replaced with the marketed product brand name.
To use the term "germ*" the product must be efficacious against 2 of the 3 major classes of organisms.
The product label must identify the specific bacteria, virus, fungus & mold.
The term 'x' is a place holder for a number between 1 to 99.

24/34

<< STORAGE & DISPOSAL – Residential containers >>

<< Trigger bottle >>

STORAGE AND DISPOSAL: Store in areas inaccessible to small children. Keep securely closed. Refillable container. Refill trigger bottle only with this product. If not refilling, discard in trash or offer for recycle. Do not reuse this trigger bottle for any other purpose.

<< Pourable container >>

STORAGE AND DISPOSAL: Store in areas inaccessible to small children. Keep securely closed. Non-refillable container. Do not reuse or refill this container. Discard in trash or offer for recycle, if available.

<< Dispensing Unit Refill bottle >>

STORAGE AND DISPOSAL: Store in areas inaccessible to children. Keep securely closed. Non-refillable container. Do not reuse or refill this container. Discard in trash or offer for recycle, if available.

<< STORAGE & DISPOSAL – Commercial / Institutional / Industrial containers >>

STORAGE AND DISPOSAL:

Do not contaminate water, food, or feed by storage and disposal.

PESTICIDE STORAGE: Store in original container in areas inaccessible to children. Keep securely closed.

PESTICIDE DISPOSAL: To avoid waste, use all material in this container according to label directions. Wastes resulting from the use of this product must be disposed of on site or at an approved waste disposal facility.

CONTAINER DISPOSAL: Non-refillable container. Do not reuse or refill this container. Clean container promptly after emptying. Triple rinse as follows: Fill container 1/4 full with water and recap. Agitate vigorously and dispose of rinsate. Repeat two more times. Discard in trash or offer for recycling, if available.

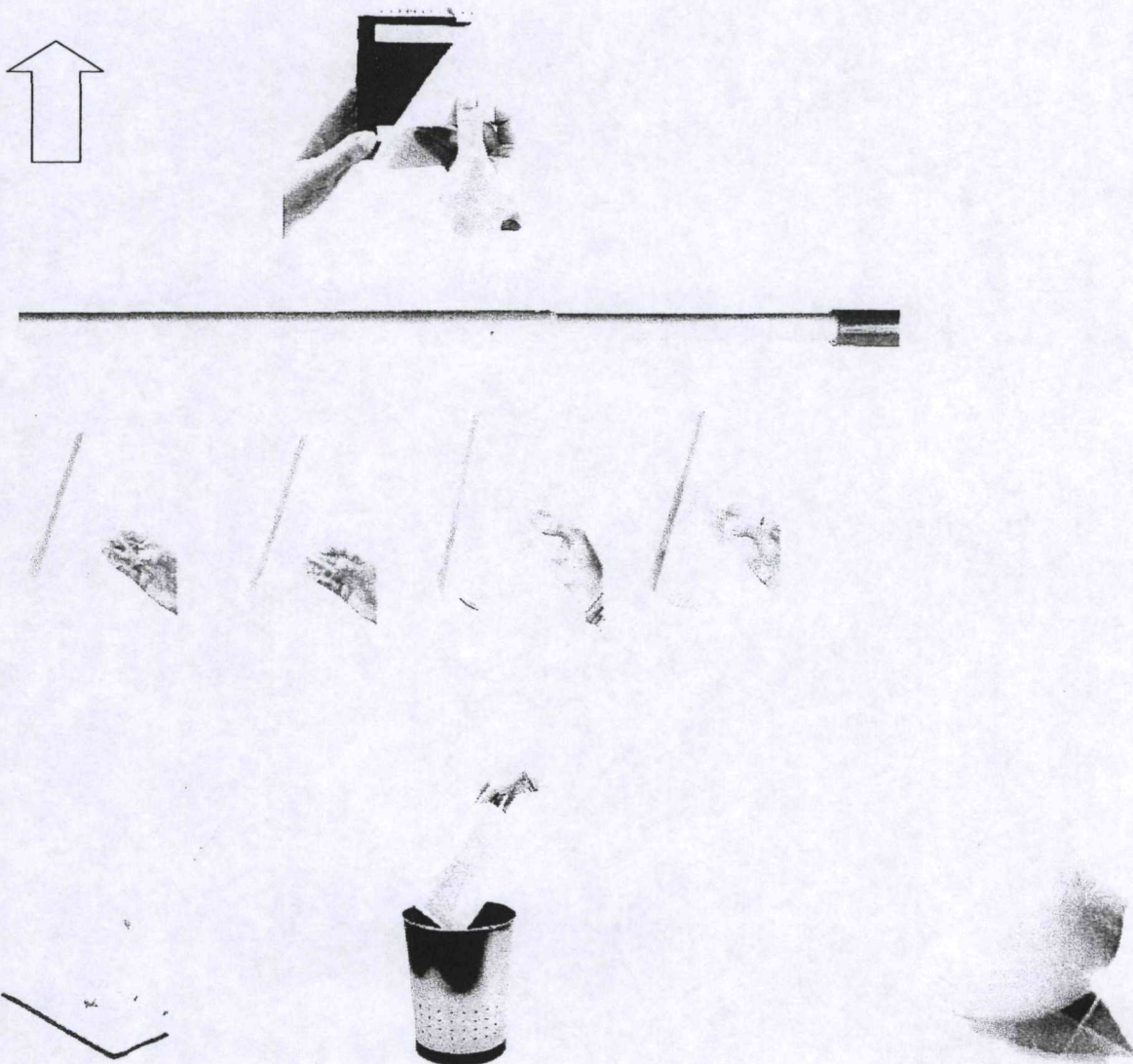
NOTE: Bracketed information is denoted as: << directive >>, { insert as noted }, (optional text), [required qualifier].
The term "this product" used throughout this document may be replaced with the marketed product brand name.
To use the term "germ*" the product must be efficacious against 2 of the 3 major classes of organisms.
The product label must identify the specific bacteria, virus, fungus & mold.
The term 'x' is a place holder for a number between 1 to 99.

<< OPTIONAL GRAPHICS >>

(Lysol[®] Automatic Dispensing Unit)



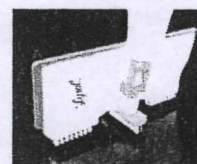
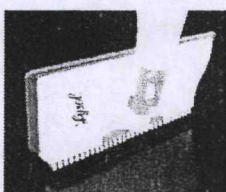
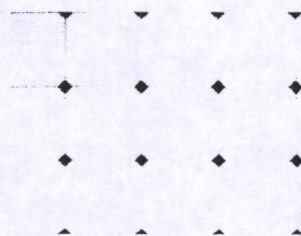
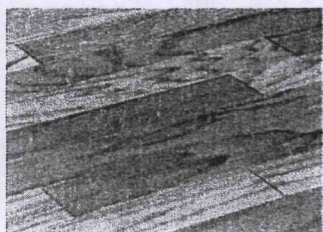
(Lysol[®] Liquid Dispensing Mop / Device / Appliance)



NOTE: Bracketed information is denoted as: << directive >>, { insert as noted }, (optional text), [required qualifier].
The term "this product" used throughout this document may be replaced with the marketed product brand name.
To use the term "germ***" the product must be efficacious against 2 of the 3 major classes of organisms.
The product label must identify the specific bacteria, virus, fungus & mold.
The term 'x' is a place holder for a number between 1 to 99.

OPTIONAL GRAPHICS

(Lysol® Liquid Dispensing Mop / Device / Appliance)



NOTE: Bracketed information is denoted as: << directive >>, { insert as noted }, (optional text), [required qualifier].
The term "this product" used throughout this document may be replaced with the marketed product brand name.
To use the term "germ**" the product must be efficacious against 2 of the 3 major classes of organisms.
The product label must identify the specific bacteria, virus, fungus & mold.
The term 'x' is a place holder for a number between 1 to 99.

Lysol Automatic Dispensing Unit - Front Label – Note: this language will be visible at point of sale but will not be visible when the bottle is in the dispenser

Powers Through Tough Grease

Lysol® Brand III Kills 99.9% of Viruses & Bacteria**Anti-bacterial Kitchen Cleaner – Scent Descriptor
(x) doses

ACTIVE INGREDIENT:

Alkyl (50% C14, 40% C12, 10% C16) dimethyl benzyl ammonium chloride0.0216%

Alkyl (67% C12, 25% C14, 7% C16, 1% C8-C10-C18) dimethyl benzyl ammonium chloride. ... 0.0860%

OTHER INGREDIENTS: 99.8924%

TOTAL: 100.0000%

KEEP OUT OF REACH OF CHILDREN

WARNING: See side panel for additional precautionary statements

Net Contents: X FL. OZ. (X mL)

Lysol Automatic Dispensing Unit – Back Labeling – Note: this language will be visible at point of sale and when the bottle is contained in the dispenser

Product marketing claim(s) (optional)

**Product bacteria and viruses claim qualifier from front panel (required) on hard non-porous surfaces

Directions for Use:

It is a violation of Federal law to use this product in a manner inconsistent with its labelling.

See front panel for ingredient information.

To Operate: Place cloth or sponge under dispenser until liquid is dispensed.

To Clean/Deodorize: Wipe surface until thoroughly wet. Wipe with a clean cloth or sponge. **To**

Sanitize/Disinfect: Pre-clean surface. Apply to surface until thoroughly wet. **To Sanitize:** Leave for 30 seconds before wiping. **To Disinfect:** Leave for 10 minutes before wiping. Rinse all food contact surfaces with water after use. Do not use on eating/cooking utensils, glasses/dishes or cookware.

Precautionary Statements: Hazards to Humans and Domestic Animals

Warning: Keep Out of Reach of Children. Causes substantial but temporary eye injury. Do not get in eyes, on skin or on clothing. Wash thoroughly with soap and water after handling and before eating, drinking, chewing gum or using tobacco. Prolonged or frequently repeated skin contact may cause allergic reactions in some individuals.

FIRST AID	
If in eyes:	<ul style="list-style-type: none">• Hold eye open and rinse slowly and gently with water for 15 – 20 minutes.• Remove contact lenses, if present, after the first 5 minutes, then continue rinsing eye.• Call a Poison Control Center or doctor for treatment advice
CONTACT NUMBER	
Questions? Comments or In case of an emergency, call toll free 1-800-228-4722. Have the product container or label with you when calling a Poison Control Center, or doctor, or going for treatment.	

STORAGE AND DISPOSAL: Store in areas inaccessible to children. Keep securely closed. Non-refillable container. Do not reuse or refill this container. Discard in trash or offer for recycling if available.

Contains no phosphates.

This bottle is made of 25% post-consumer recycled plastic.

NOTE: Bracketed information is denoted as: << directive >>, { insert as noted }, (optional text), [required qualifier].
The term "this product" used throughout this document may be replaced with the marketed product brand name.
To use the term "germ*" the product must be efficacious against 2 of the 3 major classes of organisms.
The product label must identify the specific bacteria, virus, fungus & mold.
The term 'x' is a place holder for a number between 1 to 99.

UPC / BAR CODE

For ingredient and other information, www.rbnainfo.com
Distributed by: Reckitt Benckiser
Parsippany, NJ 07054-0224
Made in U.S.A. ©2012RB
EPA Reg. No. 777-91
EPA Est. No.: 777-NJ-2, 8791-MO-1
See bottom or side
Component Number

NOTE: Bracketed information is denoted as: << directive >>, { insert as noted }, (optional text), [required qualifier].
The term "*this product*" used throughout this document may be replaced with the marketed product brand name.
To use the term "germ**" the product must be efficacious against 2 of the 3 major classes of organisms.
The product label must identify the specific bacteria, virus, fungus & mold.
The term 'x' is a place holder for a number between 1 to 99.

<< Liquid Refills >> (Label expected to be U Shaped, resulting in a front with 2 sides)

Front Label

NEW!
DISINFECTS AS IT CLEANS
Lysol® Brand Kills 99.9% of Viruses & Bacteria** Duo-Mop™ Disinfecting Cleaner – Citrus Scent

ACTIVE INGREDIENT:

Alkyl (50% C14, 40% C12, 10% C16) dimethyl benzyl ammonium chloride 0.0216%
Alkyl (67% C12, 25% C14, 7% C16, 1% C8-C10-C18) dimethyl benzyl ammonium chloride. 0.0860%

OTHER INGREDIENTS: 99.8924%

TOTAL: 100.0000%

KEEP OUT OF REACH OF CHILDREN

WARNING: See side panel for additional precautionary statements

Net Contents: 42.2 FL. OZ. (1 QT. 0.2 FL. OZ.) (1.25 L)

Side Label 1

PRECAUTIONARY STATEMENTS: Hazards to Humans and Domestic Animals

WARNING: Causes substantial but temporary eye injury. Do not get in eyes, on skin or on clothing. Wash thoroughly with soap and water after handling and before eating, drinking, chewing gum or using tobacco. Prolonged or frequently repeated skin contact may cause allergic reactions in some individuals.

<< Trigger bottle >> FIRST AID	
If in eyes	<input type="checkbox"/> Hold eye open and rinse slowly and gently with water for 15-20 minutes. <input type="checkbox"/> Remove contact lenses, if present, after the first 5 minutes, then continue rinsing eye. <input type="checkbox"/> Call a Poison Control Center or doctor for treatment advice.
CONTACT NUMBER	
Questions? Comments or In case of an emergency, call toll free (1-800-228-4722) (1-800-677-9218). Have the product container or label with you when calling a Poison Control Center, or doctor, or going for treatment.	

STORAGE AND DISPOSAL: Store in areas inaccessible to children. Keep securely closed.

Non-refillable container. Do not reuse or refill this container. Discard in trash or offer for recycle, if available.

UPC/BAR CODE

Questions? 1-xxx-xxx-xxxx
Visit (website) for details
Distributed by: Quickie Mfg. Corp.
Made in U.S.A.
CONTAINS NO PHOSPHATES.
EPA Reg. No.: 777-91
Kosher Certification Symbol

Side Label 2

Disinfecting cleaner refill

NOTE: Bracketed information is denoted as: << directive >>, { insert as noted }, (optional text), [required qualifier].
The term "this product" used throughout this document may be replaced with the marketed product brand name.
To use the term "germ**" the product must be efficacious against 2 of the 3 major classes of organisms.
The product label must identify the specific bacteria, virus, fungus & mold.
The term 'x' is a place holder for a number between 1 to 99.

30/31

This cleaner is a specially designed no-mixing, no-rinsing solution for use with Lysol® Brand Kills 99.9% of Viruses & Bacteria** Duo-Mop™ Starter Kit All-In-One Mopping System.

Deep (down) cleaning
Dries fast (with virtually no streaks (or hazing))

Great for use on (finished) (wood***) (laminated) (vinyl) (linoleum) (sealed (marble) (stone)) (and) (glazed ceramic tile)

DIRECTIONS FOR USE: It is a violation of Federal law to use this product in a manner inconsistent with its labeling.

(Directions:)

Do not remove cap. Use with (this product – Starter Kit)

(Insert) (Load) the bottle by lining up the (slotted side) (dimpled side) with the (handle). Push the bottle into the (appliance) (device) (mop) until it is secure.

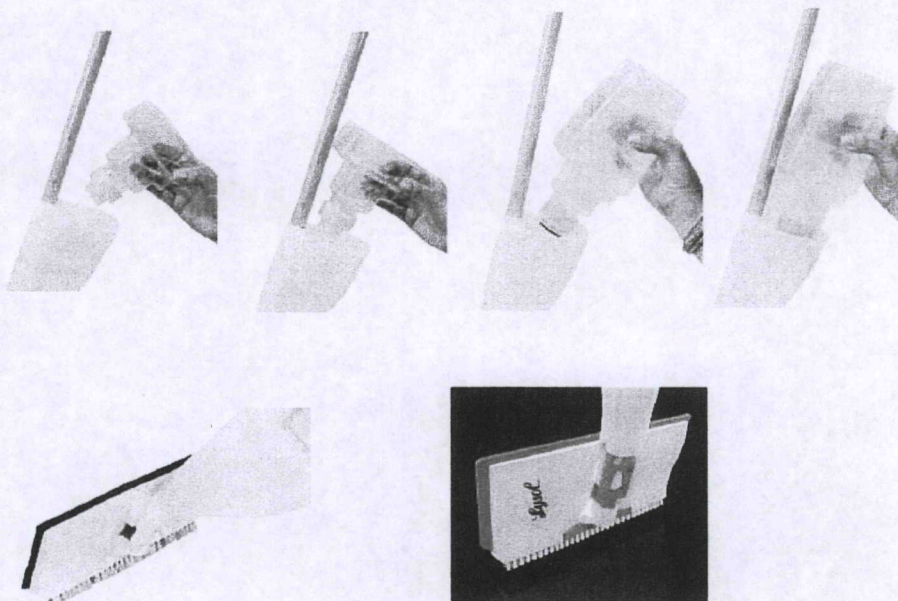
General Cleaning: Use the liquid dispensing mop to spray floor until thoroughly wet, then mop and remove excess liquid. No need to rinse.

To Disinfect: For use on hard, non-porous floors. Use the liquid dispensing mop to spray floor until thoroughly wet. Let stand for 10 minutes before mopping, then remove excess liquid. For heavily soiled floors, clean before following disinfecting instructions.

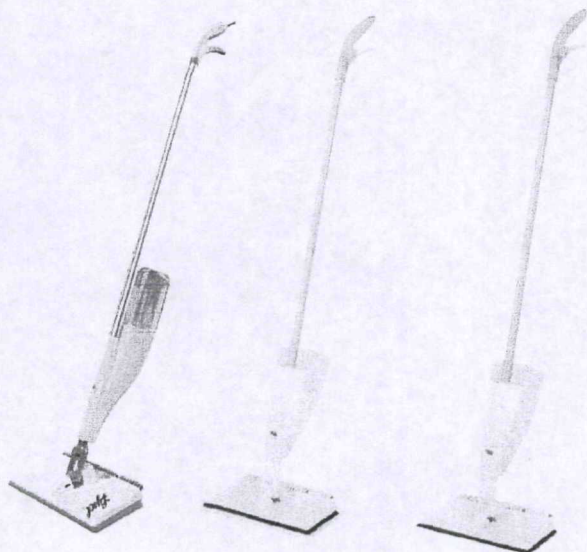
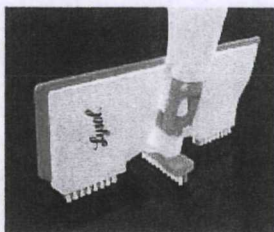
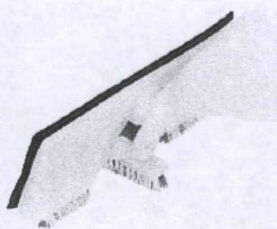
Also try (Lysol®) (Absorbent) Pad(s) (Refill(s))

*** Do not use on visibly worn, unsealed, unfinished, waxed or oiled wood floors. If uncertain about your wood floor's finish, test (an) (a small) inconspicuous area prior to use. When using on wood floors, avoid letting cleaner puddle in an area and avoid prolonged contact of the cleaner on the floor surface.

<< Optional graphics to used with **Lysol® Liquid Dispensing Mop / Device / Appliance** >>



NOTE: Bracketed information is denoted as: << directive >>, { insert as noted }, (optional text), [required qualifier].
The term "this product" used throughout this document may be replaced with the marketed product brand name.
To use the term "germ**" the product must be efficacious against 2 of the 3 major classes of organisms.
The product label must identify the specific bacteria, virus, fungus & mold.
The term 'x' is a place holder for a number between 1 to 99.



NOTE: Bracketed information is denoted as: << directive >>, { insert as noted }, (optional text), [required qualifier].
The term "*this product*" used throughout this document may be replaced with the marketed product brand name.
To use the term "germ*" the product must be efficacious against 2 of the 3 major classes of organisms.
The product label must identify the specific bacteria, virus, fungus & mold.
The term 'x' is a place holder for a number between 1 to 99.