

MAY 16 1997

SureCo, Inc.
c/o Mr. H. R. McLane
H. R. McLane, Incorporated
7210 Red Road, Suite 206
Miami, Florida 33143-5321

Subject: Revised Labeling; Alternate Formulation
Dursban Mole Cricket Bait
EPA Registration Number 769-680
Your Application Dated April 28, 1997

Dear Mr. McLane:

The labeling referred to above, submitted in connection with registration under the Federal Insecticide, Fungicide, and Rodenticide Act as amended, is acceptable provided that you make the labeling change indicated below before you release the product for shipment bearing the amended labeling:

In the Hazards to Humans and Domestic Animals, delete the last two sentences (beginning "Keep children and pets..."), and replace them with "Keep children, pets, and unprotected persons out of treated areas until dusts have settled."

Submit five (5) copies of your final printed labeling before you release the product for shipment.

A stamped copy of the labeling is enclosed for your records.

The Confidential Statement of Formula, dated April 28, 1997, showing an alternate formulation for this product, is acceptable and has been added to our files.

Sincerely yours,

CQA

for Tina E. Levine, Ph.D.
Acting Product Manager (19)
Insecticide-Rodenticide Branch
Registration Division (7505C)

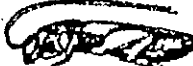
Enclosure

AllPro

Dursban® Cricket Bait

Insecticide

For the Control of Field Crickets &
Mole Crickets Infesting Lawns,
Golf Courses and Ornamental Turf.



**Contains Banana Oil Insect Attractant
A Crumblized Bait**

ACTIVE INGREDIENT:

Chlorpyrifos [O,O-diethyl O-(3,5,6-trichloro-2-pyridyl)
phosphorothioate] 0.5%

INERT INGREDIENTS: - - - - - 99.5%
TOTAL 100.0%

©Trademark of DowElanco Products

EPA Reg. No. 769-680

EPA Est. 769-GA-1

KEEP OUT OF REACH OF CHILDREN

CAUTION

STATEMENT OF PRACTICAL TREATMENT

IF SWALLOWED: Call a physician or Poison Control Center. Drink 1 or 2 glasses of water and induce vomiting by touching back of throat with finger. Do not induce vomiting or give anything by mouth to an unconscious person. **IF ON SKIN:** Wash with plenty of soap and water. Get medical attention if irritation persists. **IF IN EYES:** Flush with plenty of water for 5 minutes. Get medical attention if irritation persists. **IF INHALED:** Remove to fresh air. Get medical attention.

NOTE TO PHYSICIANS: Chlorpyrifos is a cholinesterase inhibitor. Treat symptomatically. If exposed, plasma and red blood cell cholinesterase tests may indicate significance of exposure (baseline data are useful). Atropine, only by injection, is the preferable antidote. Oximes, such as 2-PAM protopam, may be therapeutic if used early; however, use only in conjunction with atropine in case of severe acute poisoning, use antidote immediately after establishing an open airway and respiration.

EPA Reg. No. 769-680

EPA Est. No. 769-GA-1

Net Weight 50 Pounds

SURECO, INC.

10021 North Dale Mabry
Tampa, FL 33618

PRECAUTIONARY STATEMENTS

HAZARDS TO HUMANS AND DOMESTIC ANIMALS

CAUTION May be harmful if swallowed. Do not take internally. Avoid eye and skin contact. Flush contaminated eyes with plenty of water and get medical attention if irritation persists. Wash thoroughly after handling. Wash contaminated clothing before reuse. Keep away from food, feedstuffs and domestic water supplies. Keep children and pets off treated areas until material is washed into the soil and grass is dry. It is not necessary to water in the insecticide for control of surface insects.

NOTE TO PHYSICIAN: Active ingredient is a cholinesterase inhibitor. Treat symptomatically. Atropine is an antidote.

ENVIRONMENTAL HAZARDS

This product is toxic to birds, fish and other wildlife. For terrestrial uses, do not apply directly to water, or to areas where surface water is present, or to intertidal areas below the mean high water mark. Do not contaminate water by cleaning of equipment or disposal of wastes. Do not apply where runoff is likely to occur. Use this product only as specified on this label.

DIRECTIONS FOR USE

It is a violation of Federal law to use this product in a manner inconsistent with its labeling. Not for use on turf being grown for sale or for other commercial uses, such as sod, or for commercial seed production, or for research purposes.

Lawns, Golf Courses and Ornamental Turf (other than pasture land)
For the Control of Field Crickets and Mole Crickets: Apply at the rate of 150 lbs. per acre (3 1/2 lbs. per 1000 square feet). Scatter evenly over the area to be treated. Use a suitable mechanical spreader. Make application in the late afternoon.

STORAGE & DISPOSAL

Do not contaminate water, food, or feed by storage or disposal. **STORAGE:** Avoid storage at high temperatures. Protect from moisture. Avoid contamination with water, acids or alkalis. Keep container closed. Store in original containers only. Separate pesticides to avoid cross-contamination of other pesticides, fertilizer, food and feed. Keep container in locked storage areas. **PESTICIDE DISPOSAL:** Pesticide wastes are toxic. Improper disposal of excess pesticides, spray mixture, or rinsate is a violation of Federal law. If these wastes cannot be disposed of by use according to label instruction, contact your State Pesticide or Environmental Control Agency, or the Hazardous Waste Representative at the nearest EPA Regional Office for guidance. **CONTAINER DISPOSAL:** Completely empty bag into application equipment. Then dispose of empty bag in a sanitary landfill or by incineration or, if allowed by State and Local authorities, by burning. If burned, stay out of smoke.

IMPORTANT. Read these entire Directions and Conditions of Sale before using this product.

DISCLAIMER: SURECO warrants that this product conforms to the chemical description on the label and is reasonably fit for the specific purposes referred to in the Directions for Use, subject to the inherent risks referred to above. SURECO makes no other express or implied warranty of fitness or merchantability or any other express or implied warranty. In no case shall SURECO be liable for consequential, special, or indirect damages resulting from the use or handling or application of this product.

(769-680) pmA, amdrf. Includes banana crumblized (04-28-97) WPS excl. strf)

ACCEPTED
with COMMENTS
in EPA Letter Dated

MAY 16 1997

Under the Federal Insecticide,
Fungicide, and Rodenticide Act
as amended, for the pesticide
registered under EPA Reg. No.

769-680

2
2
2