

SECURITY BRAND CHEMICALS · SECURITY BRAND CHEMICALS · SECURITY BRAND CHEMICALS ·
 CHEMICALS · SECURITY BRAND CHEMICALS · SECURITY BRAND CHEMICALS · SECURITY BRAND CHEMICALS · SECURITY BRAND CHEMICALS ·
 SECURITY BRAND CHEMICALS · SECURITY BRAND CHEMICALS · SECURITY BRAND CHEMICALS · SECURITY BRAND CHEMICALS · SECURITY BRAND CHEMICALS ·
 SECURITY BRAND CHEMICALS · SECURITY BRAND CHEMICALS · SECURITY BRAND CHEMICALS · SECURITY BRAND CHEMICALS · SECURITY BRAND CHEMICALS ·



NET WEIGHT · FOUR POUNDS

SEVIN[®]
BEAN DUST

ACTIVE INGREDIENT:
 Carbaryl (1-naphthyl N-methylcarbamate) 1.75%
 INERT INGREDIENTS 98.25%
 U.S.D.A. REG. NO. 769-236 Total 100.00%

CAUTION: KEEP OUT OF REACH OF CHILDREN.

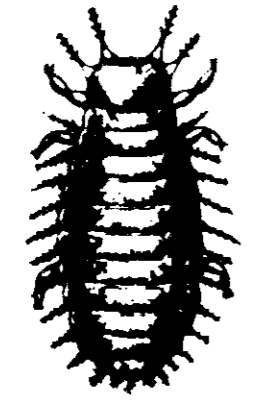
Harmful if inhaled, swallowed, or absorbed through the skin. Do not breathe dust. Do not take internally. Avoid skin contact. Avoid getting in eyes. Wash hands before eating. Wash all contaminated clothing with soap and water before re-use. Avoid contamination of food-stuffs, feed, troughs, and water receptacles. This product is toxic to honeybees. Avoid use during flowering and pollination period.

NOTE FOR PHYSICIAN: Carbaryl is a moderate, reversible, cholinesterase inhibitor. Atropine is antidotal.

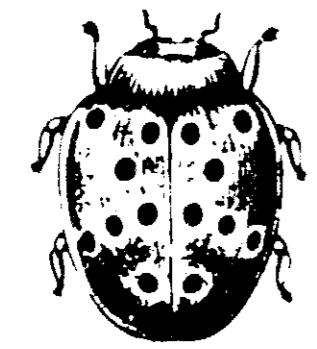
®. Trademark of Union Carbide Corp. for 1-Naphthyl N-methylcarbamate

DEC 8, 67

SEVIN[®]
BEAN DUST
CONTROLS

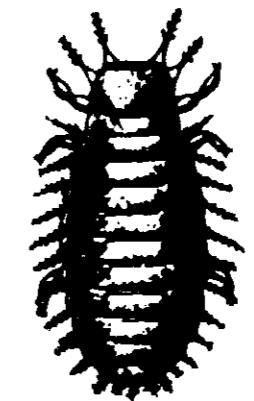


MEXICAN BEAN BEETLE LARVA

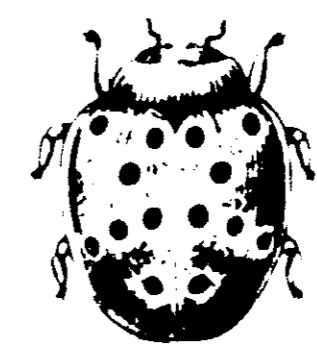


ADULT

SEVIN[®]
BEAN DUST
CONTROLS



MEXICAN BEAN BEETLE LARVA



ADULT

NET WE
SEVI

BEANS:
 Beetle ap
 pounds p
 feet of ro
 when ins
 underside
 Thorough
 well as th
 sary for g
 tions at
 necessary

NOTICE
RANTY,
LIABILIT
 product i
 transport
 dance wi
 on this
 Woolfolk
 nates, en
 ties, exp
 the warr
 fitness.

DISPOS

ITY BRAND CHEMICALS • SECURITY BRAND CHEMICALS •



BRAND CHEMICALS • SECURITY BRAND

ALS • SECURITY BRAND CHEMICAL

WEIGHT • FOUR POUNDS

SEVIN® BEAN DUST

INGREDIENT:

(1-naphthyl N-methylcarbamate) 1.75%

INGREDIENTS 98.25%

REG. NO. 769-236 Total 100.00%

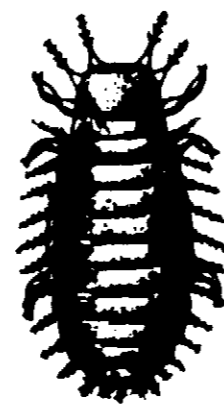
UTION: KEEP OUT OF REACH OF CHILDREN.

If inhaled, swallowed, or absorbed through the skin. Do not inhale the dust. Do not take internally. Avoid skin contact. Avoid contact with eyes. Wash hands before eating. Wash all contaminated clothing with soap and water before re-use. Avoid contamination of silos, bins, feed, troughs, and water receptacles. This product is toxic to honeybees. Avoid use during flowering and pollination.

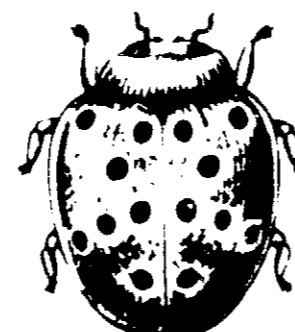
FOR PHYSICIAN: Carbaryl is a moderate, reversible, cholinesterase inhibitor. Atropine is antidotal.

Registered trademark of Union Carbide Corp. for 1-Naphthyl N-methylcarbamate

SEVIN® BEAN DUST CONTROLS



MEXICAN BEAN BEETLE
LARVA



ADULT



NET WEIGHT • FOUR POUNDS SEVIN® BEAN DUST

DIRECTIONS

BEANS: To control Mexican Bean Beetle apply at the rate of 25 to 30 pounds per acre or 2 ounces per 50 feet of row. Make the first application when insects or egg masses on the underside of the leaves are first seen. Thorough application to the lower as well as the upper leaf surface is necessary for good results. Repeat applications at 7 to 10 day intervals as necessary for control.

NOTICE—DISCLAIMER OF WARRANTY, MERCHANTABILITY AND LIABILITY—If for any reason this product is not used, applied, stored, transported or disposed of in accordance with the instructions set forth on this label, then and thereafter Woolfolk Chemical Works, Ltd., terminates, ends and excludes all warranties, expressed or implied, including the warranty of merchantability and fitness.

DISPOSAL WARNING: Dispose of waste pesticide and container in a