

PLEASE NOTE

**This image contains more than one label
approved for this product on this date.**

POTATO SPROUT INHIBITOR



chemicals

1948-182

2-20-1964

1/2

CONTAINER STORAGE AND HANDLING

Keep container closed.

Do not reuse container.

Avoid storage below freezing temperatures. Prolonged storage may result in crystal formation. Warming contents and agitation will restore material to usable condition, but do not heat above 250°F.

Avoid contamination of fertilizers, seeds, plants, and pesticides. This product inhibits germination.

NET CONTENTS 5 GALLONS
CONTAINS 15 LBS. CHLORO IPC

SPROUT NIP[®] EMULSIFIABLE CONCENTRATE

ACCEPTED
JUL 20 1964

OTHER TRADE-NOMINAL INSECTICIDES
REGISTERED AT PITTSBURGH PLATE GLASS
FOR ECONOMIC INSECTICIDE ACT
ED UNDER NO. 108-111 SUBJECT
TO ATTACHMENT COMMENTS

ACTIVE INGREDIENT:
Isopropyl N (3-Chlorophenyl) Carbamate... 36.0%

INERT INGREDIENTS:..... 64.0%

100.0%

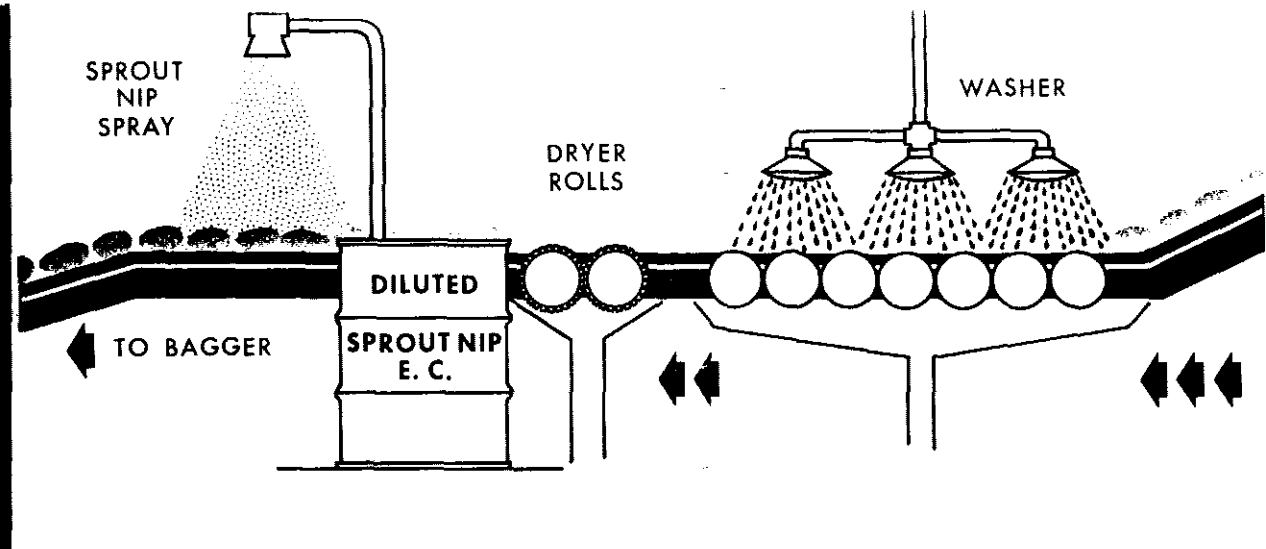
**CAUTION! HARMFUL IF SWALLOWED
DO NOT TAKE INTERNALLY**

Avoid prolonged breathing of vapor or spray mist.
Avoid contact with skin and eyes.
In case of skin contact, wash with plenty of soap and water and get medical attention.
Keep container closed when not in use.
Avoid prolonged exposure to air to prevent undue moisture pick up.

KEEP OUT OF REACH OF CHILDREN

CONDITIONS OF SALE

Pittsburgh Plate Glass Company guarantees the material sold to be true to the label. Further than that, it makes no representation or warranty, and it shall not be held responsible for any injury to crops, person or property resulting from the use, storage or handling of said material whether in accordance with the directions or not. Nor does Pittsburgh Plate Glass Company guarantee that the residue of the material will not exceed any tolerance established by the appropriate governmental agencies. Application and storage conditions and other factors beyond Pittsburgh Plate Glass Company's control, having much to do with the results, the buyer and/or user accepts and uses this material subject to the above conditions of sale.



DIRECTIONS FOR USE

NOTICE: Sprout Nip Emulsifiable Concentrate is used for treating potatoes after storage and washing.

Sprout Nip Emulsifiable Concentrate will prevent wound periderm formation of potatoes, therefore, it should be used only after bruises and cuts have healed (normally minimum of two weeks).

Do not apply in field.

Do not use on seed potatoes. This inhibition of sprouting at recommended rates is usually effective up to a year.

Wash equipment thoroughly with soap and water before using for seed potatoes.

EQUIPMENT: Sprout Nip Emulsifiable Concentrate is applied as a 1% emulsion on the drying table after the potatoes have been washed.

Spray nozzle should be set to spray evenly across rolls moving the potatoes.

Dryer rolls will distribute Sprout Nip Emulsifiable Concentrate to assure complete coverage of each potato.

APPLICATION: Dilute Sprout Nip Emulsifiable Concentrate to a 1% emulsion by adding 1 gallon of Sprout Nip Emulsifiable Concentrate to 35 gallons of water.

Agitate enough to form a uniform emulsion.

Apply at rate of 1 quart of 1% emulsion per 20 bags of potatoes (100 pounds per bag).

ACCEPTED

FEB 20 1964

UNDER THE FEDERAL INSECTICIDE
FUNGICIDE AND RODENTICIDE ACT
FOR ECONOMIC POISON REGISTERED
UNDER NO. 748-182

2/2

NEXT

LABEL

748-182

2-20-1964

1/2

How SPROUT NIP Works

In addition to stopping effectively all growth of the potato bud, it halts the formation of the wound peridium. All bruises and cuts must be healed thoroughly before SPROUT NIP is applied, otherwise open wounds might be left through which rot organisms may enter.

The action of SPROUT NIP takes place only on the surface of the potato. If the surface is uniformly treated with at least 4 ppm of the active ingredient (basis total weight of the potato), the treated potato will be free from sprouting. The normal washing of potatoes will reduce the amount of the active ingredient on the potato surface—but not below the sprout inhibiting level.

How SPROUT NIP is applied

APPLICATION RATES

| CWT. Potatoes | SPROUT NIP |
|---------------|------------|
| 23.5 | 1 ounce |
| 37.5 | 1 pint |
| 75.0 | 1 quart |
| 300.0 | 1 gallon |

Use sufficient dilution of water with emulsifiable concentrate to give coverage of the potato. For example:

After the potato is taken from cold storage, SPROUT NIP should be applied as a 1% emulsion before the potato goes through the marketing channels.

The best accepted method of application is to spray the 1% emulsion on the potatoes as they travel over sponge drier rolls following washing. To allow good inhibition, SPROUT NIP should be applied at the rate of 1 quart of 1% emulsion per 20 cwt. of potatoes. Instead of the spray treatment, a dip of the 1% emulsion is also satisfactory but care must be taken to maintain a constant concentration in the dip bath. It is recommended that the potatoes not be put through a hot air drier after treatment. The hot air may volatilize some of the

SPROUT NIP... partial inhibition is obtained.

Potatoes should be free of excess water when sprayed with SPROUT NIP because run-off of water will carry away any SPROUT NIP with it, reducing the effectiveness of the treatment.

How to get best results

The best results are obtained when the eye of the potato is sprayed uniformly with a 1% emulsion of SPROUT NIP. Excessive dirt on the potato surface will prevent the potato eye from being treated and may mean incipient damage.

Wounds on the potato should be carefully treated before SPROUT NIP is made after treatment. Wounds may heal. These wounds may be a source of rot organisms.

Washing of potatoes with SPROUT NIP in the recommended amount of water means shorter control time and less variation in the treatment.

Note on Seed Potatoes

SPROUT NIP will stop germination of potatoes up to a year. Therefore, every precaution should be taken to keep the solution from coming in contact with potatoes which are to be used for seed purposes. If seed potatoes are to be put through a washer and drier, thoroughly clean the drier rolls with soap and water to remove all SPROUT NIP before operating the machine.

Availability and Cost

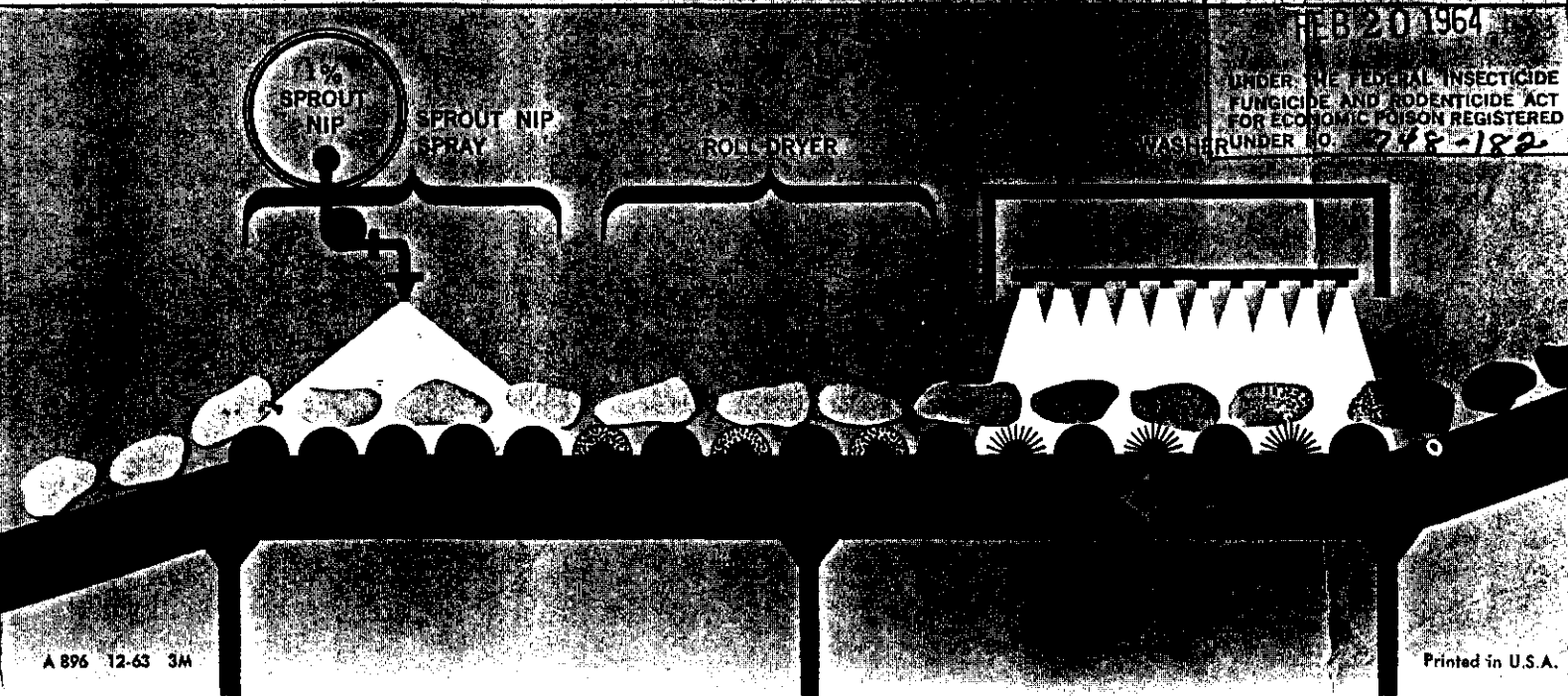
SPROUT NIP is available directly from the Chemical Division of Pittsburgh Plate Glass Company or through applicators in potato areas.

SPROUT NIP, when used as recommended, costs approximately 1 1/2¢ per bushel of potatoes treated.

ACCEPTED

FEB 20 1964

UNDER THE FEDERAL INSECTICIDE FUNGICIDE AND RODENTICIDE ACT FOR ECONOMIC POISON REGISTERED UNDER NO. 748-182



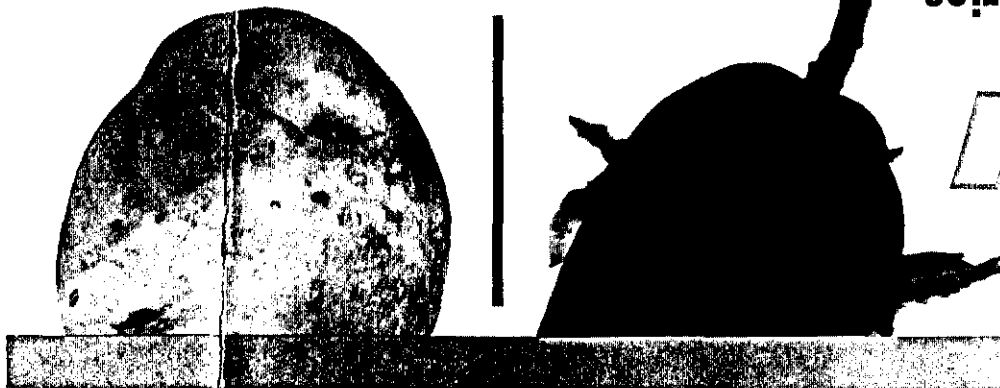
2/2

EMULSIFIABLE CONCENTRATE

SPROUT NIP®

of **PPG** chemicals . . .
from the laboratories

NOU



SPROUT NIP is packed . . .

. . . in one-gallon (six to a case), five-gallon, and thirty-gallon containers.

Information on SPROUT NIP

If you are interested in obtaining further information on SPROUT NIP Emulsified Concentrate please contact the sales office of the Chemical Division of Pittsburgh Plate Glass, One Gateway Center, Pittsburgh 22, Pa., or fill in the enclosed business reply card and mail.

CAUTION When considering the application of SPROUT NIP, it is essential that the following be kept in mind:

1. SPROUT NIP must not be used on or near seed potatoes. A very small amount of SPROUT NIP will seriously affect seed germination.
2. SPROUT NIP may be applied only to potatoes that are thoroughly healed of field cuts and bruises and have a heavy skin set.
3. SPROUT NIP controls only sprouting. All other factors affecting potatoes must still be controlled by normal methods. Although SPROUT NIP can keep potatoes

free of sprouting for up to one year, other old age conditions may take over. It cannot be expected that SPROUT NIP application will stop any of the other ageing factors. SPROUT NIP can eliminate sprouting as a controlling factor in your marketing practices. SPROUT NIP, properly used, is one of the least expensive and most effective sprout inhibitors ever discovered.

4. Do not store SPROUT NIP below 32°F.

The above data are based upon the best information known to Pittsburgh Plate Glass Company. However, no warranty, express or implied is made that the product described will conform to the properties listed above, or that they are suitable for any particular purpose. No guaranty is made that the use of the above data will not infringe any patent and no license is hereby given or offered under any patent. Nothing contained herein shall be construed as a recommendation to infringe any patent.

Shipping containers of potatoes treated with Sprout Nip used for shipments in interstate commerce should state on their labels that the potatoes were treated with Chloro IPC to inhibit sprouting.



chemicals

Pittsburgh Plate Glass Company • Chemical Division
One Gateway Center • Pittsburgh, Pa. 15122

AUTHORIZED SPROUT NIP APPLICATORS

TRESTON BUBAR
Monticello, Maine
Phone: (207) 538-8953

HARRY PETERSON
R. D. #3
Centerville, Pennsylvania
Phone (814) 694-3340

VALLEY CHEMICAL LABORATORIES, INC.
2005 Broadway
Fargo, North Dakota
(Don Piepkorn)
Phone: (701) 235-1658

CHEMICAL SUPPLY COMPANY
P. O. Box 564
Twin Falls, Idaho
(Warren Shillington)
Phone: (208) 733-0897

COASTAL CHEMICALS
R. D. #1, Box 132
Sound Avenue
Riverhead, New York
(Fred Reeve)
Phone: (516) Jamesport 2-3275

Maintain maximum potato yields with SPROUT NIP® emulsifiable concentrate. SPROUT NIP Emulsifiable Concentrate effectively inhibits the growth of the potato bud and leaves no taste, odor or color on treated potatoes. It is an inexpensive, long-lasting sprout inhibitor containing Chloro IPC (Isopropyl N (3-chlorophenyl) carbamate).

Through the market to the HOUSEWIFE



NEXT

LABEL

POTATO SPROUT INHIBITOR



chemicals

NET CONTENTS 1 GALLON
CONTAINS 3 LBS. CHLORO IPC

CONTAINER STORAGE AND HANDLING

Keep container closed.

Do not reuse container.

Avoid storage below freezing temperatures. Prolonged storage may result in crystal formation. Warming contents and agitation will restore material to usable condition, but do not heat above 250°F.

Avoid contamination of fertilizers, seeds, plants, and pesticides. This product inhibits germination.

EMULSIFIABLE CONCENTRATE

ACTIVE INGREDIENT:
Isopropyl N (3-Chlorophenyl) Carbamate .. 26.0%
INERT INGREDIENTS:..... 64.0%
100.0%

**CAUTION! HARMFUL IF SWALLOWED
DO NOT TAKE INTERNALLY**

Avoid prolonged breathing of vapor or spray mist.
Avoid contact with skin and eyes.
In case of skin contact, wash with plenty of soap and water and get medical attention.
Keep container closed when not in use.
Avoid prolonged exposure to air to prevent undue moisture pick up.

ACCEPTED

FEB 20 1964

UNDER THE FEDERAL INSECTICIDE
FUNGICIDE & RODENTICIDE ACT
FOR E. COOPER & SONS REGISTERED
UNDER 748-182

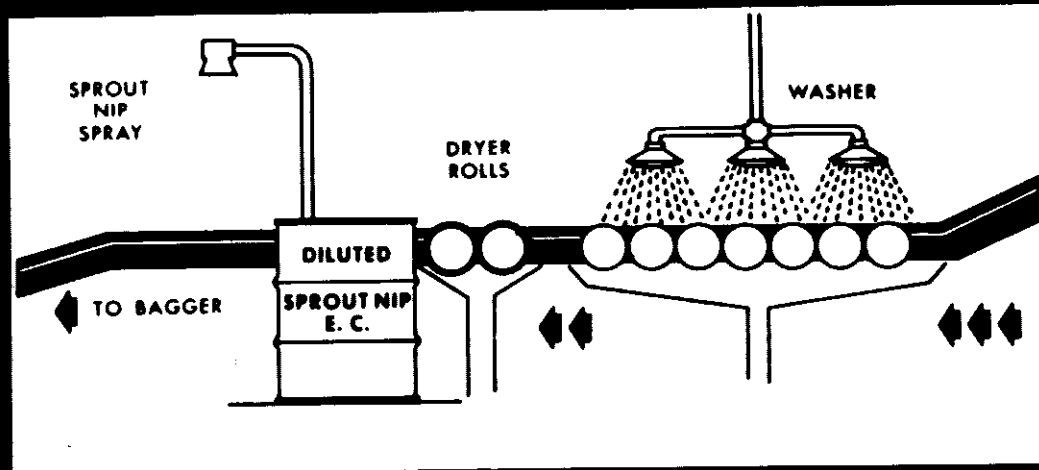
PITTSBURGH PLATE GLASS COMPANY

CHEMICAL DIVISION

148-182-871

148-182-871

148-182-871



CONDITIONS OF SALE

Pittsburgh Plate Glass Company guarantees the material sold to be true to the label. Further than that, it makes no representation or warranty, and it shall not be held responsible for any injury to crops, person or property resulting from the use, storage or handling of said material whether in accordance with the directions or not. Nor does Pittsburgh Plate Glass Company guarantee that the residue of the material will not exceed any tolerance established by the appropriate governmental agencies. Application and storage conditions and other factors beyond Pittsburgh Plate Glass Company's control, having much to do with the results, the buyer and/or user accepts and uses this material subject to the above conditions of sale.

DIRECTIONS FOR USE

Sprout Nip Emulsifiable Concentrate is used for treating potatoes after storage and washing.

Sprout Nip Emulsifiable Concentrate will prevent wound periderm formation of potatoes, therefore, it should be used only after bruises and cuts have healed (normally minimum of two weeks).

Do not apply in field.

Do not use on seed potatoes. This inhibition of sprouting at recommended rates is usually effective up to a year.

Wash equipment thoroughly with soap and water before using for seed potatoes.

Sprout Nip Emulsifiable Concentrate is applied as a 1% emulsion on the drying table after the potatoes have been washed.

Spray nozzle should be set to spray evenly across rolls moving the potatoes.

Dryer rolls will distribute Sprout Nip Emulsifiable Concentrate to assure complete coverage of each potato.

Dilute Sprout Nip Emulsifiable Concentrate to a 1% emulsion by adding 1 gallon of Sprout Nip Emulsifiable Concentrate to 35 gallons of water.

Agitate enough to form a uniform emulsion.

Apply at rate of 1 quart of 1% emulsion per 20 bags of potatoes (100 pounds per bag).

PITTSBURGH
PLATE GLASS COMPANY

CHEMICAL DIVISION

2/2