

**ROHM AND HAAS COMPANY**

INDEPENDENCE MALL WEST

PHILADELPHIA, PENNSYLVANIA 19105



DITHANE M-45 AGRICULTURAL FUNGICIDE  
EPA REG. NO. 707-78

PM 21

707-78

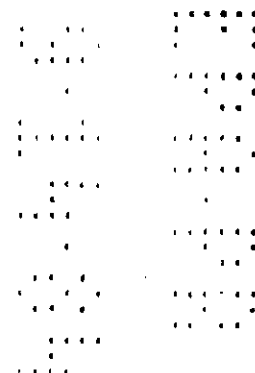
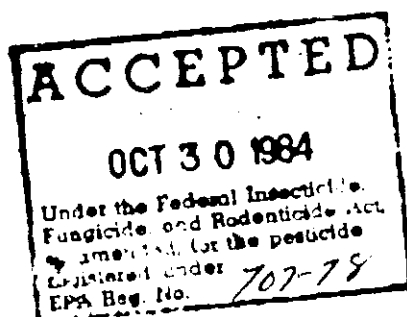
**SEED TREATMENT:**

**REMARKS (ALSO REFER TO DIRECTIONS FOR USE)**

Seeds to be treated should be cleaned and well cured prior to treatment.

DITHANE M-45 fungicide may be applied to dry seed with conventional slurry or mist seed treating equipment or as a planter-box application. For best results, the seed must be completely and uniformly covered with fungicide.

For seed treatment, a dye must be added to DITHANE M-45 fungicide which will impart an unnatural color to the seed.



8106E/326Z

**ROHM AND HAAS COMPANY**

INDEPENDENCE MALL WEST

PHILADELPHIA, PENNSYLVANIA 19105



DITHANER<sup>R</sup> M-45 AGRICULTURAL FUNGICIDE

EPA Ref. NO. 707-78

Amended Label For Turf and Ornamental Uses

(6865E/19Z)

Crop	Diseases Controlled	Rate of DITHANE M-45 Fungicide Per Application oz./1000 Ft. <sup>2</sup>	Remarks (Also Refer to Directions for Use)
TURF:	Helminthosporium melting-out Rust (leaf, stem, stripe)	4	GENERAL USE DIRECTIONS: Start application when grass greens-up in spring or when disease first appears and repeat at 7 to 14 day intervals or until disease threat is past.
	Copper Spot Fusarium blight Red thread Slime mold	4 to 8	When conditions are especially favorable for disease development, apply maximum fungicide use rate on a 7-day spray schedule.
	Algae	6	Apply in sufficient water to provide adequate coverage.
	Dollar spot	6 to 8	
	Rhizoctonia brown patch	4	Apply on a 7-day spray schedule.
	Pythium blight	8	Apply at 5-day intervals, or more frequently, if conditions are especially favorable for disease development.
	Fusarium snow mold	6 to 8	Apply at 2 to 6 week intervals during winter.

ACCEPTED

<u>Crop</u>	<u>Diseases Controlled</u>	<u>Remarks</u> (Also Refer to Directions For Use)
-------------	----------------------------	--

ORNAMENTALS:

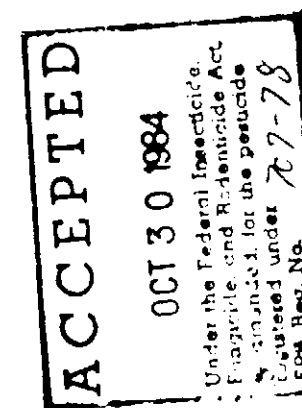
GENERAL INSTRUCTIONS:

Apply the equivalent of 1½ lbs. DITHANE M-45 fungicide per 100 gals.

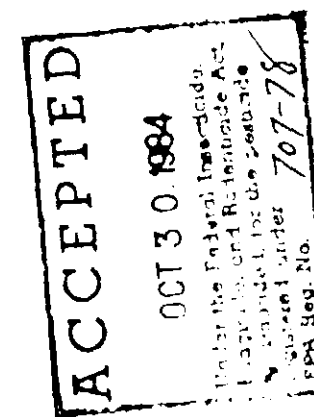
The addition of TRITON B-1956 to spray solutions will improve performance.

Begin spraying when plants are well leafed out or at first sign of disease in a full coverage spray at 7 to 10 day intervals throughout season or follow State Extension Service recommendations for disease control on the following ornamental plants:

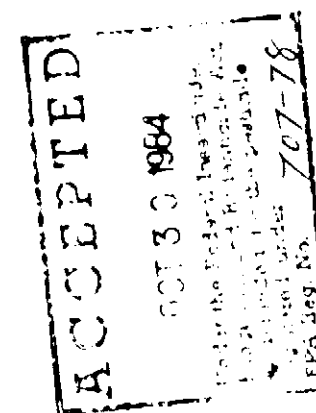
African violet	Botrytis blight
Anthurium	Anthracnose spadix rot
Arborvitae	Cercospora blight
Ash, mountain	Entomosporium leaf spot Guignardia leaf blotch
Ash, White	Anthracnose Cylindrosporium leaf spot
Aster, perennial	Puccinia rusts
Aucuba japonica	Alternaria leaf spot Anthracnose



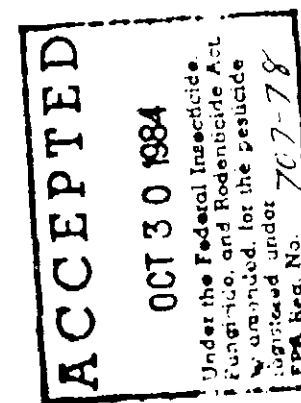
Crop	Diseases Controlled	Remarks (Also Refer to Directions For Use)
Azalea	Cylindrocladium rot Petal blight Phytophthora twig and bud blight	Apply in a full coverage spray, 2 to 3 times a week, while flowers are opening. Direct spray into flowers and thoroughly spray ground under bushes.
Begonia	Botrytis blight	
Buffaloberry	Cylindrosporium leaf spot	Do not use fruit for food or feed purposes.
Camellias	Petal blight	Refer to azalea
Carnation	Rust Septoria leaf spot	
Cedar, red (Juniper)	Cercospora blight Phomopsis blight	
Chrysanthemum	Ascochyta blight Botrytis petal spot Rust	Apply twice weekly during blooming period.



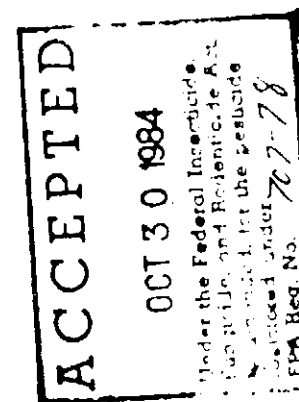
Crop	Diseases Controlled	Remarks (Also Refer to Directions For Use)
Conifers	Lophodermium needle cast Pine gall rust Scirrhia brown spot	Begin application in spring or early summer before infection occurs. Repeat after heavy rains and at two week intervals as long as needed.
Cordyline	Cercospora leaf spot	
Crabapple (Ornamental)	Cedar-apple rust Scab Sphaeropsis leaf spot	
Cypress, Arizona (Cypressus sp.)	Cercospora blight Monochaetia canker	
Dahlia	Botrytis blight	
Dieffenbachia	Leptosphaeria brown spot	
Dogwood, flowering	Anthracnose Elisone leaf spot Septoria leaf spot	Apply when buds begin to open, when bracts have fallen, 4 weeks later and again in late summer after flower buds for next season have formed.



Crop	Diseases Controlled	Remarks (Also Refer to Directions For Use)
Dracaena	Fusarium leaf spot	
Elm	Black leaf spot	
Euonymus	Anthracnose	
Fatsia	Anthracnose	
Fern	Rhizoctonia blight	
Ficus	Cercospora leaf spot	
Firethorn (Pyracantha)	Fusicladium scab	
Fir, Douglas	Swiss needle cast	
Fuchsia	Botrytis blight Rust	
Geranium	Rust	
Gladiolous	Botrytis blossom blight Curvularia leaf spot	Make regular weekly applications starting before diseases appear and increase to 2 or 3 applications per week during periods of heavy disease and during rainy weather.  On flower spikes, reduce spray concentration to 3/4 lb. per 100 g.

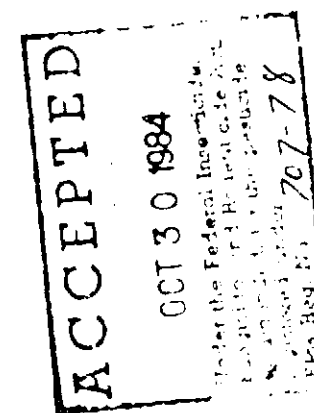


Crop	Diseases Controlled	Remarks (Also Refer to Directions For Use)
Hawthorn	Cedar-apple rust Fabraea leaf spot Frogeye leaf spot Hawthorn rust Scab	
Holly	Purple spot	
Hollyhock	Anthracnose Cercospora leaf spot Puccinia rusts	
Honeysuckle	Herpobasidium blight	
Horsechestnut, Buckeye	Alternaria leaf spot Guignardia leaf blotch	
Hydrangeas	Botrytis blight Cercospora leaf spot	
Iris	Didymellina leaf spot Myrothecium ink spot	
Juniper	Phomopsis blight	



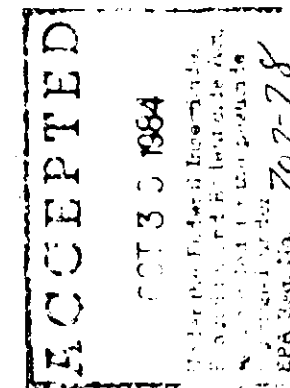


Crop	Diseases Controlled	Remarks (Also Refer to Directions For Use)
Laurel, mountain	Cercospora leaf spot Petal blight	Refer to azalea
Ligustrum	Cercospora leaf spot	
Lily	Botrytis blight	
Magnolia	Glomerosporium leaf spot	
Maple	Alternaria leaf spot Phyllosticta leaf spot	Do not use on sugar maples intended for the production of maple syrup
Marigold	Botrytis blossom blight	
Narcissus	Botrytis blight (fire) Smoulder	
Oak	Actinopelte leaf spot Taphrina leaf blister	
Orchid (Dendrobium)	Botrytis blossom blight	
Pachysandra	Volutellia blight	Use a drenching spray of 2 lbs. per 50 gallons of water per 5,000 sq. ft. of bed. Start application at first sign of disease and apply at least 5 applications at 10 to 14 day intervals.



Crop	Diseases Controlled	Remarks (Also Refer to Directions For Use)
Pansy	Anthracnose	
Peony	Botrytis blossom blight Phytophthora blight	Apply in early spring and early fall, drenching soil around plants as well as the foliage. Promptly destroy all infected plant parts.
Peperomia	Cercospora leaf spot	
Philodendron	Dactylaria leaf spot Phytophthora leaf spot	
Photinia	Entomosporium leaf spot	
Pleomele	Fusarium leaf spot	
Poinsettia	Sphaceloma scab	
Rhododendron	Cercospora leaf spot Discosia leaf spot Petal blight	Refer to Azalea
Rose	Black spot Cercospora leaf spot Rust	

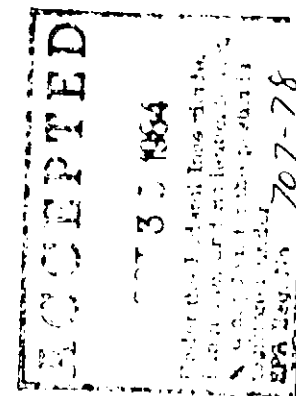
(6865E/192)



11 612

Crop	Diseases Controlled	Remarks (Also Refer to Directions For Use)
Schefflera	Alternaria blight	
Skunkbush sumac	Cylindrosporium leaf spot	
Snapdragon	Rust	
Statice	Cerospora frog-eye	
Syngonium	Cephalosporium leaf spot	
Tulip	Botrytis blight (fire)	
Venus flytrap	Anthracnose	
Viburnum	Downy Mildew Ramularia leaf spot	
Walnut	Anthracnose	Do not use treated walnuts for food or feed purposes.
Zinnia	<i>Alternaria</i> Leaf blight	

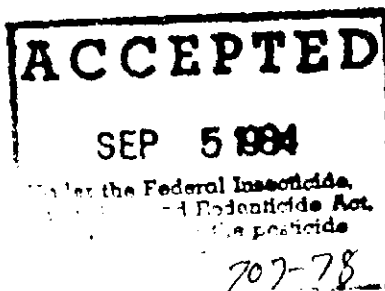
(6865E/192)



Seed Treatment:

<u>Crop</u>	<u>Diseases Controlled</u>	Rate of DITHANE M-45 Fungicide Per Application	
		<u>Oz./Bu.</u>	<u>Oz./100 Lb.</u>
Corn (field)	Damping-off Seed rots Seedling blights	1.5 to 3.0	2.7 to 5.4

HEC:mel  
(7253E/36Z)  
5/31/84



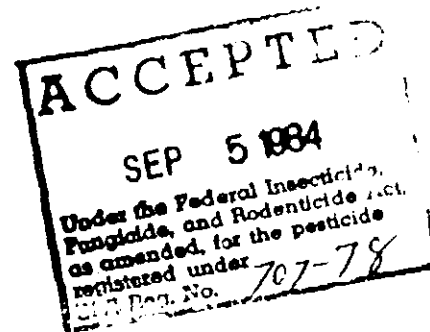
132613

# ROHM AND HAAS COMPANY

INDEPENDENCE MALL WEST  
PHILADELPHIA, PENNSYLVANIA 19105



DITHANER<sup>®</sup> M-45 Agricultural Fungicide  
EPA Reg. No. 707-78  
Supplemental Labeling



Use Directions for Common Corn Rust Control.

Crop	Diseases Controlled	Rate of DITHANE M-45 Fungicide Per Application Lb./A	Remarks (Also Refer To Directions For Use)	Restrictions
------	---------------------	--	--	--------------

## VEGETABLES:

Corn (sweet, popcorn)	Common corn Rust	1½	Use sufficient water for thorough coverage. Start applications when disease first appears and repeat at 4 to 7 day intervals.  The addition of TRITON B-1956 or TRITON CS-7 to spray solutions will improve performance.	Do not apply within 7 days of harvest.  Do not feed treated forage to livestock.
-----------------------	------------------	----	--	--

## FIELD CROPS:

Corn (field, hybrid seedcorn)	Common corn Rust	1½	Start application when disease symptoms first appear and, depending on severity of infection, continue on a 4 to 14 day schedule.  The addition of TRITON B-1956 or TRITON CS-7 to spray solutions will improve performance.	Do not apply within 40 days of harvest.
-------------------------------	------------------	----	--	---

IMPORTANT: Follow all applicable directions, restrictions, and precautions on the DITHANE M-45 label.

8109E/326Z