

DIRECTIONS

BUILDINGS WITH CONCRETE SLAB ON THE GROUND

- (1) Apply 1 gallon 0.3% solution per 10 square feet as an over-all treatment under the slab as well as under attached porches, entrance platforms, utility entrances and similar situations where slab or fill is at grade level.
- (2) Apply 2 gallons 0.3% solution per 5 linear feet to critical areas only under the slab, such as along the inside of foundation walls, around sewer pipes, conduits, etc. Trench as in part 3).
(Treat all voids in hollow masonry units of the foundation at the rate of one gallon per five linear feet of wall, applying the chemical near the footings when possible.)
- (3) Along the outside of foundation walls, dig a narrow trench no deeper than the top of the footings, but no deeper than 15 inches. Apply 1 gallon 0.3% solution per 5 linear feet. Replace the soil and apply another 1 gallon 0.3% solution per 5 linear feet to the back fill. Cover the back fill with a layer of soil.

BUILDINGS WITH BASEMENTS

- (1) Apply 1 gallon 0.3% solution per 10 square feet as an over-all treatment under the basement flooring as well as under attached porches, entrance platforms, utility entrances and similar situations where slab fill is at the grade level. Where crawl spaces exist, treat as described in part 2).
- (2) Apply 2 gallons 0.3% solution per 5 linear feet to critical areas only under the basement flooring, as well as porches and entrances having crawl spaces, such as along the inside of foundation walls, ground sewer pipes, conduits, piers, etc. Trench according to directions in part (3).
- (3) Along the outside of the foundation walls, dig a narrow trench, such trench to be dug no deeper than the top of the footings. If the trench is less than 15 inches in depth to the top of the footings apply 1 gallon 0.3% solution per 5 linear feet. Replace the soil and apply another 1 gallon 0.3% solution per 5 linear feet to the back fill. Cover the back fill with a layer of soil. If the trench is more than 15 inches deep apply 2 gallons 0.3% solution per 5 linear feet to the back fill. If the trench is in depth to the top of the footings, apply 2 gallons 0.3% solution per 5 linear feet. Replace the soil and apply another 1 gallon 0.3% solution per 5 linear feet. Cover the back fill with a layer of soil. A trench 30 inches deep is a maximum depth required alongside those foundations where the top of the footings is greater than 30 inches deep.

NOTICE: User assumes all risks of use or handling.

Perkerson's

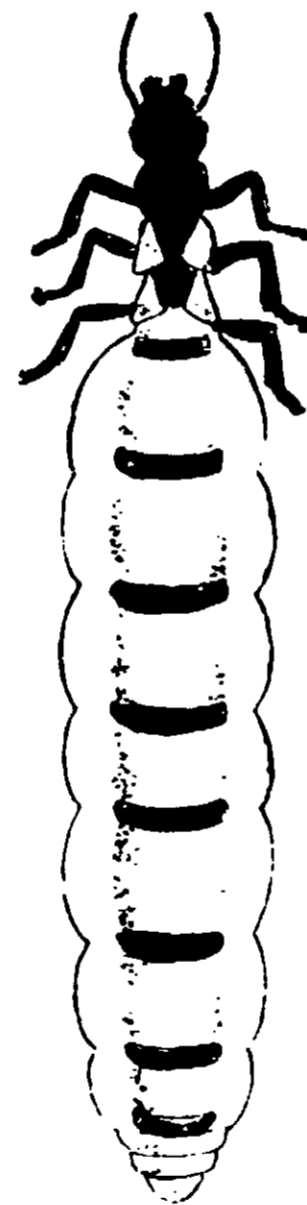
NO. 89

CONTENTS

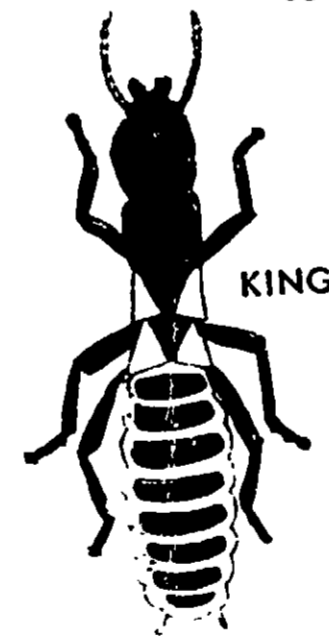
FINAL NOTICE
TERMITE
CONTROL

Effective
Against Termites
Does Not Repel Termites But Kills
Them When They Enter

The Treated Zone



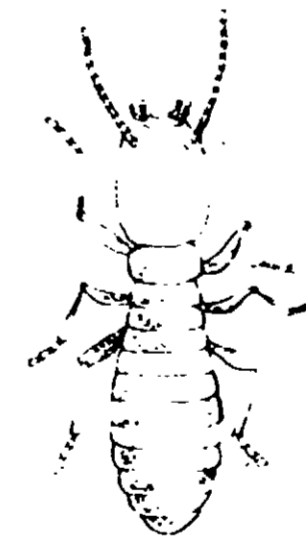
QUEEN



KING



SOLDIER



WORKER



WINGED
ADULT

ACTIVE INGREDIENTS:

*Dieldrin	17.0% w/w
Methylated Naphthalene	78.0%
Inert Ingredients	5 %

*Equivalent to 14.4% Hexachlorepoxyoctahydro-endo, exo-dimethanonaphthalene and 2.6% related compounds.

WARNING: Keep out of reach of children. See back panel for additional cautions.

U.S.D.A. Reg. No. 690.27

Hazardous if swallowed skin. (Do not breathe vapor or on clothing. In case of contaminated clothing flush for eyes, get medical attention after handling and clothing. During commercial mixing and loading operations wear gloves and a mask or respirator. U.S. Department of Agriculture prohibits application of feed and for drift to areas occupied by animals. Do not use or store in streams, lakes or ponds. Rinse spray equipment and of liquid waste in a pit or water supplies. Do not reuse empty.

DIRECTIONS

FOR TERMITE CONTROL:
Concentrate with 59 gallons of water.
BUILDINGS WITH CRAWL SPACES

- (1) Apply 2 gallons 0.3% solution per 5 linear feet to critical areas only under the foundation walls, around sewer pipes, conduits, etc. Trench according to directions in part (3).
- (2) Along the outside of foundation walls, dig a narrow trench such trench to be dug no deeper than the top of the footings, apply 1 gallon 0.3% solution per 5 linear feet to the back fill. If the trench is more than 15 inches deep apply 2 gallons 0.3% solution per 5 linear feet to the back fill. If the trench is in depth to the top of the footings, apply 2 gallons 0.3% solution per 5 linear feet. Replace the soil and apply another 1 gallon 0.3% solution per 5 linear feet. Cover the back fill with a layer of soil. A trench 30 inches deep is a maximum depth required alongside those foundations where the top of the footings is greater than 30 inches deep.
- (3) Apply 1 gallon 0.3% solution per 5 linear feet to the surface under attached porches, entrance platforms, utility entrances and similar situations where slab or fill is at grade level. Where crawl spaces exist, treat as described in part (1).

PACKED BY PERKS PRODUCTS CO.
NASHVILLE, TENN.

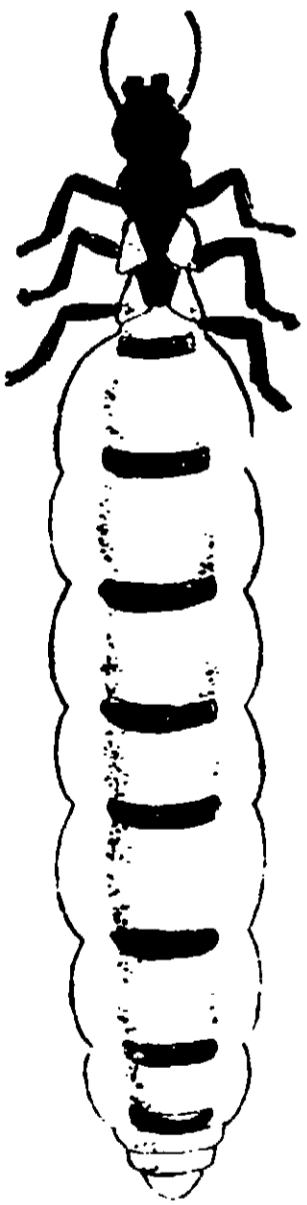
Perkerson's

NO. 89

CONTENTS

FINAL NOTICE TERMITE CONTROL

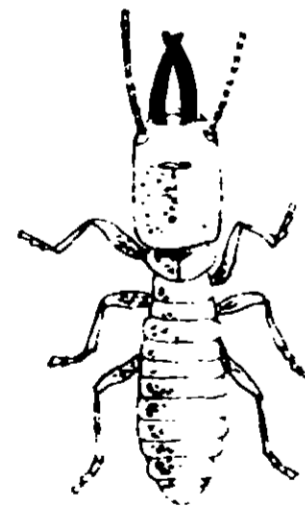
**Effective
Against Termites
Does Not Repel Termites But Kills
Them When They Enter
The Treated Zone**



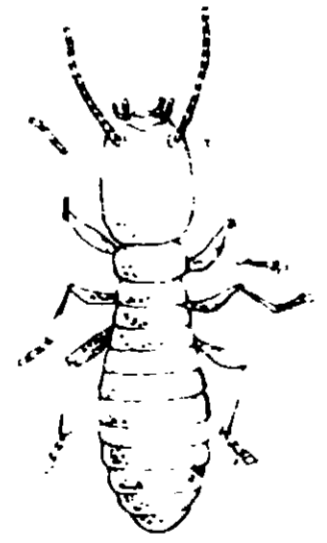
QUEEN



KING



SOLDIER



WORKER



WINGED
ADULT

ACTIVE INGREDIENTS:

*Dieldrin	17.0% w/w
Methylated Naphthalene	78.0%
Inert Ingredients	5 %

*Equivalent to 14.4% Hexachlorepoxyoctahydro-endo, exo-dimethanonaphthalene and 2.6% related compounds.

WARNING: Keep out of reach of children. See back panel for additional cautions.
U.S.D.A. Reg. No. 690-27

WARNINGS

Hazardous if swallowed, inhaled or absorbed through the skin. (Do not breathe vapors or spray mist.) Do not get in eyes, on skin or on clothing. In case of contact, immediately remove contaminated clothing flush skin or eyes with plenty of water; for eyes, get medical attention. Wash thoroughly with soap and water after handling and before eating or smoking; wear clean clothing. During commercial or prolonged exposure in spray-mixing and loading operations, wear clean synthetic rubber gloves and a mask or respirator of a type passed by the U.S. Department of Agriculture for Dieldrin protection. Avoid contamination of feed and foodstuffs. Do not apply or allow to drift to areas occupied by unprotected humans or beneficial animals. Do not use or store near heat or open flame.
TOXIC TO FISH AND WILDLIFE. DO NOT CONTAMINATE STREAMS, LAKES OR PONDS WITH THIS MATERIAL.
Rinse spray equipment and container with water and dispose of liquid waste in a pit in non-crop land, located away from water supplies. Do not reuse empty container. Destroy when empty.

DIRECTIONS FOR USE

FOR TERMITE CONTROL: Mix 1 gallon this "1.5" Emulsifiable Concentrate with 59 gallons of water for a 0.3% solution.

BUILDINGS WITH CRAWL SPACES

- (1) Apply 2 gallons 0.3% solution per 5 linear feet to critical areas only under the house, such as along the inside of foundation walls, around piers, sewer pipes, conduits, etc. Trench according to directions in part 2).
- (2) Along the outside of foundation walls, dig a narrow trench, such trench to be dug no deeper than the top of the footings. If the trench is less than 15 inches in depth to the top of the footings, apply 1 gallon 0.3% solution per 5 linear feet. Replace the soil and apply another 1 gallon 0.3% solution per 5 linear feet to the back fill. Cover the back fill with a layer of soil. If the trench is more than 15 inches in depth to the top of the footings, apply 2 gallons 0.3% solution per 5 linear feet. Replace the soil and apply another 2 gallons 0.3% solution per 5 linear feet to the back fill. Cover the back fill with a layer of soil. A trench 30 inches deep is a maximum depth required alongside those foundations where the top of the footings is greater than 30 inches deep.
- (3) Apply 1 gallon 0.3% solution per 10 square feet of soil surface under attached porches, entrance platforms, utility entrances and similar situations where slab or fill is at the grade level. Where crawl spaces exist, treat as described in part (1).

PACKED BY PERKS PRODUCTS CO. 1338 LEWIS ST
NASHVILLE TENNESSEE 37210