

[655-494]

A PRENTISS PEST-TESTED PRODUCT

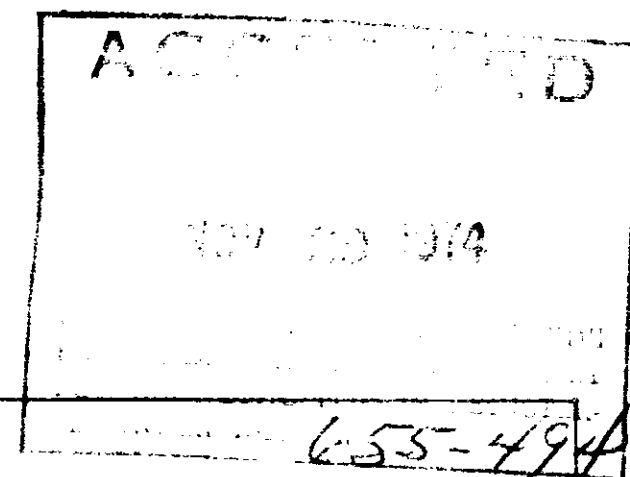


PYRONYL LIVESTOCK SPRAY CONCENTRATE

ACTIVE INGREDIENTS:

Petroleum Distillates	78.80%
Piperonyl Butoxide, Technical*	12.00%
Pyrethrins	1.20%

INERT INGREDIENTS:	8.00%
TOTAL	100.00%



*Equivalent to 9.6% (Butylcarbityl)(6-propylpiperonyl) Ether and 2.4% related compounds.

CAUTION

**KEEP OUT OF REACH OF CHILDREN
HARMFUL IF SWALLOWED.**

DO NOT USE, POUR, SPILL OR STORE NEAR HEAT OR OPEN FLAME.
DO NOT REUSE EMPTY DRUM. RETURN TO DRUM RECONDITIONER OR
DESTROY BY PERFORATING OR CRUSHING, AND BURYING IN A SAFE
PLACE AWAY FROM WATER SUPPLIES*

This product is toxic to fish. Keep out of lakes, streams, or ponds. Do not apply where runoff is likely to occur. Do not apply when weather conditions favor drift from areas treated. Do not contaminate water by cleaning of equipment, or disposal of wastes. Apply this product only as specified on this label.

DIRECTIONS:

FLEAS - To kill fleas on cats and dogs, dilute at 1 to 100, and thoroughly wet the animal by dipping or spraying. For best results against fleas and ticks on pets kennels, animals quarters and bedding should also be treated.

HORSE, SHEEP, GOAT & HOG - Dilute 1 gal. of Concentrate with 100 gallons of water for control of active louse stages. Apply for thorough body coverage, using 1 to 3 gallons on horses, and 1 to 3 quarts on sheep, goats and hogs.

POULTRY - Dilute 1 gallon with 100 gallons of water, and treat birds by submerging in a barrel, tank or tub, holding the wings away from the body, to insure thorough wetting of all infected areas. Dip on warm day or in a warm building, to avoid chilling of fowls.

CATTLE - 1 gallon of Concentrate in 100 gallons of water gives effective control of the active stages of both, sucking and biting lice, on beef and dairy cattle. Apply to thoroughly wet all portions of the body, using 1 to 3 gallons per head, depending on size of the animal. Repeated treatments are recommended due to hatching of eggs.

SHEEP "TICK" OR KED - Use 1 gallon of Concentrate in 100 gallons of water and thoroughly wet all portions of the body by dipping, or by spraying with sufficient pressure and a nozzle adjustment to give penetration into the wool. Treat at the rate of 1 to 4 pints per head, as determined by size of the animals and condition of fleece.



NET CONTENTS _____ LBS.

E.P.A. Est. No. 655-NJ-1
E.P.A. Reg. No. 655-494

Prentiss Drug & Chemical Co., Inc.

PLANT: 338 WILSON AVENUE, NEWARK, N. J. 07105

OFFICE: 363 SEVENTH AVENUE, NEW YORK, N. Y. 10001