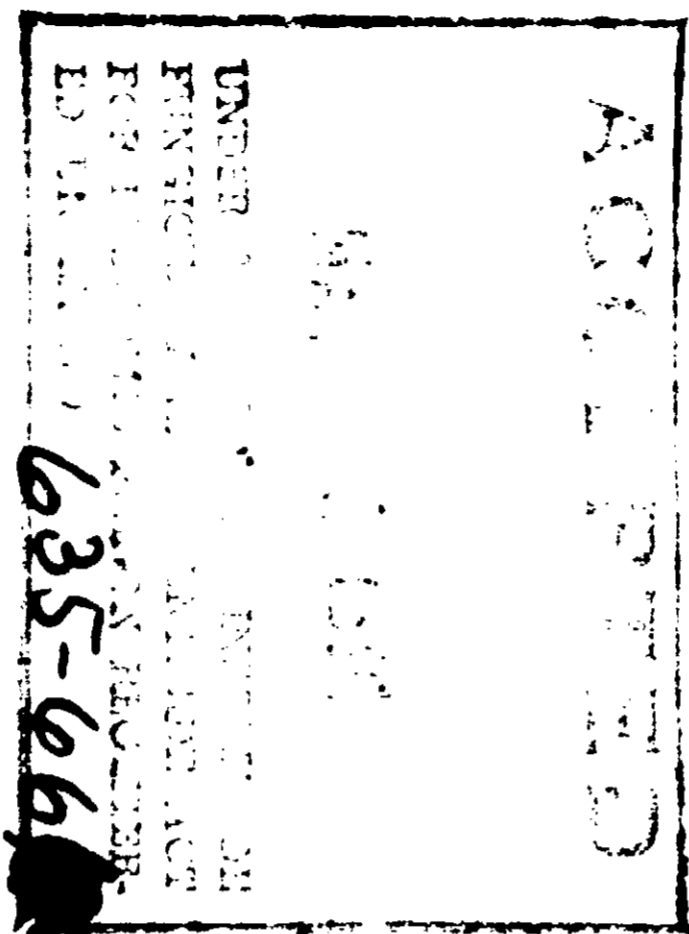


VEGETABLE CROPS
 Beans (French, Lima, etc.): For the control of Aphids, Leafhoppers, Leaf miners, Mites, and Lynx bugs, apply 3/4 pt/A. Beans may be harvested 7 days after application. Do not feed treated vines.
 For the control of Aphids, apply 3/4 to 1 1/2 pts/A. Do not apply within 3 days of harvest.

This product is intended for use by the commercial grower or commercial applicator in conventional hydraulic sprayers, ground applicators or airplane sprayers. When applying by ground equipment, use recommended amount in sufficient water for thorough coverage; by aircraft equipment, in 2 to 10 gallons of water per acre. Do not apply when weather conditions favor drift of spray from areas treated. Repeat applications as necessary unless otherwise specified. Consult your state experiment station or state extension service for proper timing of applications.

DIRECTIONS FOR USE



DIMETHOATE EC

ACTIVE INGREDIENTS:

Dimethoate (0,0-Dimethyl S- (N-methylcarbamoyl)methyl)	30.0%
Phosphorodithioate	34.0%
Xylene	36.0%
INERT INGREDIENTS:	
	TOTAL 100.0%

DESTROY CONTAINER WHEN EMPTY. NEVER RE-USE
WARNING: KEEP OUT OF THE REACH OF CHILDREN.
 See side panel for additional warnings.
NET CONTENTS — 5 GAL.

The manufacturer makes no warranties, express or implied, concerning this product or its use, which extend beyond the description on the label. All statements made concerning this product apply only when used as directed.

SOLD BY
E-Z FLO CHEMICAL COMPANY
 Division of Kirsto Company
 COLUMBUS, OHIO • LANSING, MICHIGAN

DIRECTIONS FOR USE (Continued)

FIELD CROPS

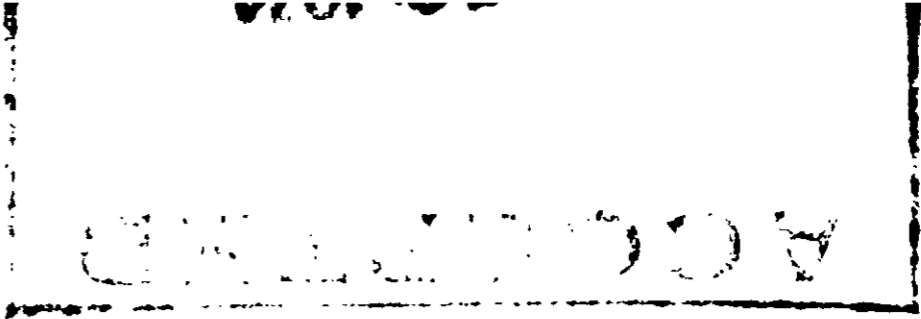
ALFALFA (grown for hay): For the control of Aphids, Leafhoppers, Lynx bugs, Grasshoppers, and Reduction of Arava Woolly Acre. Apply 3/4 to 1 1/2 pt/A. Do not apply to alfalfa in the bloom period. Do not apply within 10 days of harvest or pasturing. Make only one application per year.
CORN (early season): For the control of Aphids, Mites, and Thrips. Apply 3/4 pt/A. Do not apply within 14 days of harvest. Repeat application should not be made at intervals closer than 14 days. Do not feed treated forage or graze livestock on treated fields.
TOMATOES: For the control of Aphids. Apply 3/4 to 1 pt/A. Do not apply within 21 days of harvest.

FOREST INSECTS

PINYON PINE: For the control of Pinyon needle scale. Apply 3 gals. in 100 gals. water/A. Apply spray to egg masses at the base of the trees, and to all rough bark and crotches that can be reached from the ground. Make this bark application when crawlers start to emerge from the eggs. Use hydraulic or back-pack sprayer. Do not spray leaves or needles since phytotoxicity may result.
DOUGLAS FIR: For the control of Fir cone midge. Apply 3/4 gal. in 100 gals. water/A. Make thorough coverage application when cones are closed and persistent. Use hydraulic or back-pack sprayer.
PIGMY: For the control of Loblolly pine sawfly. Apply 3/4-3/4 pt. per acre in 2 gals. water. Apply by aircraft when air is calm and the temperature is below 60°F. Apply when most larvae are in the second and third instars. Do not apply to pine trees used for pine nut or pinon nut production.

WARNING

Harmful or fatal if swallowed. Wash thoroughly after handling. Do not contaminate feed or food products.



HOATE EC

methylocarbonylmethyl)

30.5%
34.5%
36.5%
TOTAL 100%

WHEN EMPTY, NEVER RE-USE
OUT OF THE REACH OF CHILDREN.

For additional warnings,
CONTENTS — 5 GAL.

Do not express or implied, concerning this product or
application on the label. All statements made con-
sidered as directed.

SOLD BY

AGRICULTURAL COMPANY

of Kirsto Company
LANSING, MICHIGAN

DIRECTIONS FOR USE (Continued)

FIELD CROPS

- ALFALFA (grown for hay):** For the control of Aphids, Leafhoppers, Lygus bugs, Grasshoppers, and Reduction of Alfalfa Weevil Larvae. Apply ¾ to 1½ pts/A. Do not apply to alfalfa in the bloom period. Do not apply within 10 days of harvest or pasturing. Make only one application per year.
- COTTON (early season):** For the control of Aphids, Mites, and Thrips. Apply ¾ pt/A. Do not apply within 14 days of harvest. Repeat application should not be made at intervals closer than 14 days. Do not feed treated forage or graze livestock on treated fields.
- TOBACCO:** For the control of Aphids. Apply ¾ to 1 pt/A. Do not apply within 21 days of harvest.

FOREST INSECTS

- PINYON PINE:** For the control of Pinyon needle scale. Apply 3 gals. in 100 gals. water/A. Apply spray to egg masses at the base of the trees, and to all rough bark and crotches that can be reached from the ground. Make this bark application when crawlers start to emerge from the eggs. Use hydraulic or back-pack sprayer. Do not spray leaves or needles since phytotoxicity may result.
- DONGLAS FIR:** For the control of Fir cone midge. Apply ¾ gal. in 100 gals. water/A. Make thorough coverage application when cones are closed and persistent. Use hydraulic or back-pack sprayer.
- PINES:** For the control of Loblolly pine sawfly. Apply ¾-¾ pt. per acre in 2 gals. water. Apply by aircraft when air is calm and the temperature is below 68°F. Apply when most larvae are in the second and third instars. Do not apply to pine trees used for pine nut or pinon nut production.

WARNING

Harmful or fatal if swallowed. Wash thoroughly after handling. Do not contaminate food or feed products. Vapor harmful. Concentrated material causes eye irritation. Avoid breathing vapor or spray mist. Use only with adequate ventilation. Avoid contact with skin and eyes.

FIRST AID: In case of contact with eyes, flush eyes with plenty of water for at least 15 minutes; get medical attention. **NOTE TO PHYSICIANS:** This product may cause cholinesterase inhibition. Atropine is antidotal.

This product is toxic to wildlife. Keep out of lakes, streams, or ponds. Do not apply where runoff is likely to occur. Do not apply when weather conditions favor drift from areas treated. Do not contaminate water by cleaning of equipment, or disposal of wastes. Apply this product only as specified on this label.

This product is toxic to bees. Restrict application to the period after dark when bees are inside the hive or in the early morning before the bees are foraging in the fields. Protective information may be obtained from your cooperative agricultural extension service.

Do not use this product for any uses other than those specified on this label.

Combustible: Keep away from heat and open flame. Do not store below freezing temperatures.

Disposal of pails: Drain pail completely. Add ½ gallon of water, ¼ cup of detergent and ¼ pound of lye. Tighten closure. Rotate pail to wet all surfaces and let stand for at least 15 minutes. Drain completely and rinse several times with water. Tighten closure. Puncture and crush pail to prevent re-use.

635-66

DIMETHOAT

ACTIVE INGREDIENTS:

Dimethoate (O,O-Dimethyl S- (N-methylcarbamoyl) Phosphorodithioate)

Xylene

INERT INGREDIENTS:

DESTROY CONTAINER WHEN EMPTY

WARNING: KEEP OUT OF REACH OF CHILDREN

See side panel for additional information

NET CONTENTS:

The manufacturer makes no warranties, express or implied, which extend beyond the description of the product. The user assumes all liability concerning this product apply only when used as directed.

SOLD BY

E-Z FLO CHEMICAL

Division of Kirsto
COLUMBUS, OHIO • LAN

DIRECTIONS FOR USE

This product is intended for use by the commercial grower or commercial applicator in conventional hydraulic sprayers, ground applicators or airplane sprayers. When applying by ground equipment, use recommended amount in sufficient water for thorough coverage; by aircraft equipment, in 2 to 10 gallons of water per acre. Do not apply when weather conditions favor drift of spray from areas treated. Repeat applications as necessary unless otherwise specified. Consult your state experiment station or state extension service for proper timing of applications.

VEGETABLE CROPS

- BEANS (green, lima, snap, dry):** For the control of Aphids, Leafhoppers, Leaf miners, Mites, and Lygus bugs. Apply ¾ to 1½ pts/A. Beans may be harvested on day of application. Do not feed treated vines.
- BROCCOLI, CAULIFLOWER:** For the control of Aphids. Apply ¾ to 1½ pts/A. Do not apply within 7 days of harvest.
- CABBAGE:** For the control of Aphids. Apply ¾ to 1½ pts/A. Do not apply within 3 days of harvest.
- COLLARDS, ENRIVE (escarole), KALE, LEAF LETTUCE, MUSTARD GREENS, SPINACH, SWISS CHARD, and TURNIP greens, Turnip roots:** For the control of Aphids, Leafhoppers, and Leaf miners. Apply ¾ pt/A. Do not apply within 14 days of harvest.
- HEAD LETTUCE:** For the control of Aphids, Leafhoppers, and Leaf Miners. Apply ¾ pt/A. Do not apply within 7 days of harvest.
- MELONS (except watermelons):** For the control of Aphids, Leafhoppers, Leaf Miners, and Thrips. Apply 1½ pts/A. Do not apply within 3 days of harvest.
- PEAS:** For the control of Aphids. Apply ½ pt/A. Peas may be harvested on day of application. Do not feed or graze hay within 21 days after last application when a stationary viner is used. Do not feed or graze when a mobile viner is used.
- PEPPERS:** For the control of Aphids, Leaf miners, and Maggots. Apply ¾ to 1 pt/A. Peppers may be harvested on day of application.
- POTATOES:** For the control of Aphids, Leaf miners, and Leafhoppers. Apply ¾ to 1½ pts/A. Potatoes may be harvested on day of application.
- TOMATOES:** For the control of Aphids, Leaf miners, and Leafhoppers. Apply ¾ to 1½ pts/A. Do not apply within 7 days of harvest.