



## DEAD-WHITE

Containing KORLAN\*

Insecticidal

### WHITE WATER PAINT

For interior painting of  
Barns, Poultry Houses and other Farm Buildings

Recommended for use in

### DAIRY BARNs

Kills Stable Flies, House Flies, Fleas and Spiders.

ONE COAT APPLICATION

TRUE-WHITE & LONG LASTING

**Active Ingredients:**

Ronnel (0,0-dimethyl 0-(2, 4, 5-trichlorophenyl)

phosphorothioate\*\*) **0.5%**

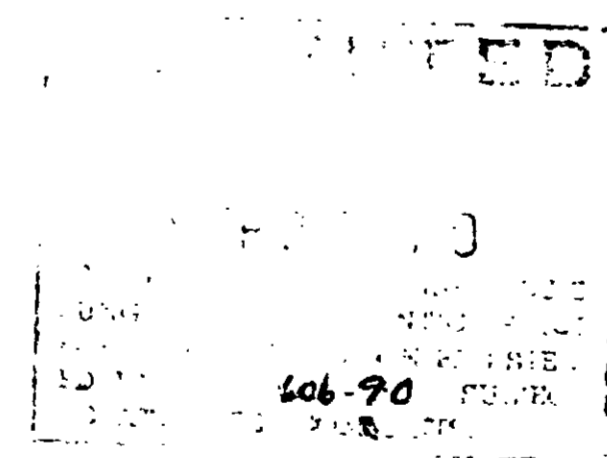
Inert Ingredients **99.5%**

\*\*From technical grade; not suitable for internal use in animals.  
\*Korlan — registered trademark of The Dow Chemical Company  
U.S. Pat. No. 2599516

NET CONTENTS 50 LBS.

**Caution: Keep Out Of The Reach Of Children. See  
Rear Panel For Additional Cautions.**

Manufactured by  
**THE CORN KING Division**  
**KING CASTLE, INC.**  
MARION, IOWA 52302



## DIRECTIONS

### 1. MIXING:

Mix 10 lbs. of Dead-White with 5 gals. of water for spray painting. For brush painting it may be mixed a little heavier, such as 10 lbs. to 4 or 4½ gals of water. Stir well a few minutes and it is ready to use. Where used in a power sprayer, use a medium-fine nozzle and approximately 120 lbs. pressure.

### 2. APPLICATION:

- a. Remove all livestock from buildings to be treated with insecticide.
- b. Thoroughly clean and protect or remove from building all equipment including feeders and waterers. Remove all litter or bedding and clean building thoroughly.
- c. Ventilate the building and do not house livestock until treatment has been absorbed, set, or dried.

Dead-White may be used on the interiors of farm buildings including ceilings and walls of barns, stable and poultry houses. Highly recommended for dairy barns. It may also be used on ceilings and walls of basements in human dwellings providing the walls remain dry.

Dead-White is suitable for application on wood, brick, stone, cement, tile, etc. Surface to be painted should first be cleaned of any dirt or loose paint scales.

Apply Dead-White at the rate of 1 gal. per 100 square feet. This will give good coverage and will give residual protection against stable and house flies and will destroy spiders coming in direct contact with spray.

To control fleas in dog kennels, destroy infested bedding and spray interior of kennel thoroughly, giving particular attention to cracks and crevices. Repeat as necessary.

Dead-White being a water paint, looks somewhat thin and watery when first put on, but quickly dries to give a clean and sanitary white finish. One coat gives good coverage on most surfaces. However, a second coat will often improve the appearance and is recommended for dark and discolored surfaces. Second coat may be applied as soon as first has dried.

**CAUTION:** Harmful if swallowed. Avoid prolonged breathing of spray mist. Avoid prolonged and repeated contact with skin. Wash thoroughly after using. Avoid contamination of feed and foodstuffs. Before applying in dairy barns, remove all utensils and completely cover all stationary milk processing equipment.