

### DIRECTIONS

Mix Purina Ornamental Spray at the rate of 2 tablespoonfuls (1 fluid ounce) per gallon of water. Spray on foliage when insects first appear; continue at 7 to 14 day intervals as needed. For crickets, earwigs and grasshoppers also spray area surrounding plants. For gall mites, spray swollen buds before leaves appear; respray in 7 to 10 days if cool weather delays leaf growth.

**FLOWERS:** Roses, asters, azaleas, begonias, camellias, carnations, chrysanthemums, coleus, dahlias, delphiniums, geranium, gladioli, marigolds, nasturtiums, rhododendrons, snapdragons, zinnias and many other flowers.

**CONTROLS:** Aphid, black vine weevil, cricket, Japanese beetle, lacebug, leafhopper, leaf miner, mealybug, plant bug, scale, springtail, tent caterpillar, thrip, webworm.

**ORNAMENTALS AND SHADE TREES: CONTROLS:** Aphid, bagworm, European pine shoot moth, gall mites, Japanese beetle (adults), lace bug, leaf beetles, leafhoppers, leafminers, mealybug, oak kermes, spider mite, scurfy scale, tarnished plant bug, thrip, tent caterpillar.

**NOTE:** Do not spray ferns, crassula, maple or hickory trees as injury may occur. Do not spray elms under extreme heat, drought and disease conditions. Some leaf burn may occur on tender foliage when temperature exceeds 85° F and humidity is high.

**WARNING:** Always use freshly mixed solution. Do not allow spray to drift to areas where they might injure people or animals or contaminate food or feed. Do not feed nearby vegetation to poultry, dairy animals, or animals being finished for slaughter.

**CAUTION:** Harmful if swallowed. Contact with skin can cause toxic symptoms. Avoid breathing spray mist. In case of contact with skin, wash with soap and water. Avoid contamination of feed and food stuffs.

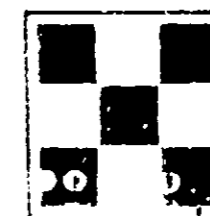
**ANTIDOTE:** External—In case of spillage on skin, wash promptly with soap and water. For eyes, flush with water for 15 minutes; get medical attention.

Internal—Induce vomiting using 1 tablespoonful mustard in glass of water. Call a physician. Atropine is an antidote for malathion.

This product is toxic to fish and wildlife. Birds feeding on treated areas may be killed. Apply only as specified on this label. Rinse equipment, break empty bottle, and dispose of waste by burying in non-crop lands away from water supplies.

This product is highly toxic to bees exposed to direct treatment or residues on plants. Protective information may be obtained from your Cooperative Agricultural Extension Service.

**QUALITY CONTROLLED BY PURINA RESEARCH**



U.S.D.A.  
Reg. No. 602-167

# ORNAMENTAL SPRAY

FLOWERS • SHRUBS • SHADE TREES  
Insecticide Concentrate

Active Ingredients:	
• Malathion.....	19.0%
• Technical Chlordane.....	15.0%
• Xylene.....	36.5%
Inert Ingredients.....	29.5%
	100.0%

• O-O-dimethyl dithiophosphate of diethyl mercaptosuccinate.  
•• Equivalent to 9% Octochloro-4,7-methanotetrahydroindane and 6% insecticidally active related compounds.

**KEEP OUT OF THE REACH OF CHILDREN  
SEE OTHER WARNINGS ON BACK PANEL**

NET CONTENTS: 16 FL. OZ. (1 PINT)

Manufactured by  
**RALSTON PURINA COMPANY**  
General Offices • Checkerboard Square • St. Louis, Missouri 63199

TAKE TIME



OBSERVE LABEL  
DIRECTIONS