

Front Panel

PURINA®

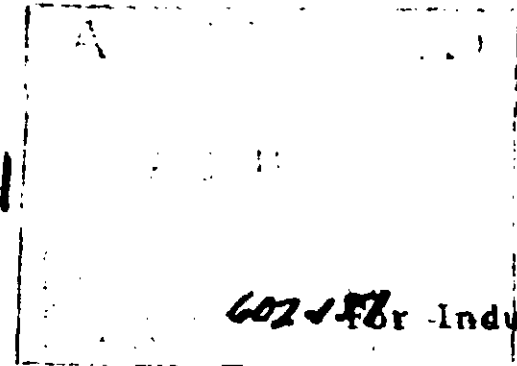
RESIDUAL INSECT SPRAY

E.P.A. Reg. No. 602-151-AA

Contains *Baygon

(®) in Checkers)

602-151



For Industrial and Institutional Use

By Pest Control Operators or Other Trained Personnel Only

Active Ingredients:

o-Isopropoxyphenyl methylcarbamate +	9.0%
Xylene	66.5%

Inert Ingredients	24.5%
	<u>100.0%</u>

+ U.S. Patent No. 3,111,539 Canadian Patent No. 725,204
 * Baygon is the registered trademark of Farbenfabriken Bayer A.G.
 Chemagro Corporation licensee.

KILLS: Roaches, Flies, Ants, Spiders, Crickets, Centipedes, Millipedes, Mosquitoes, Earwigs, Silverfish, Scorpions, Sowbugs, Fleas, Clover Mites, Brown Dog Ticks.

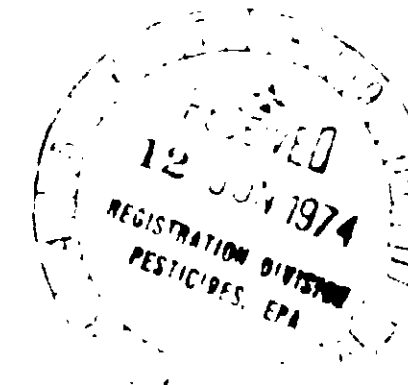
AND

Aids in the Control of

Grain Insects - exposed stages of Cadelle, Cigarette Beetle, Drugstore Beetle, Indian Meal Moth, Mediterranean Flour Moth, Red Flour Beetle, Saw-toothed Grain Beetle.

CAUTION: KEEP OUT OF REACH OF CHILDREN

See Back Panel for Additional Cautions



Net Contents: 1 Gallon P-4614
5 Gallon P-4620

(Note: Type size will conform with labeling requirements for precautionary labeling.)

Manufactured by RALSTON PURINA COMPANY
General Offices
Checkerboard Square
St. Louis, Missouri 63188

Base Panel

Purina Residual Insect Spray drives insects from their hiding places; gives rapid and continued kill. Apply with a low pressure sprayer using a coarse spray nozzle. Spray surfaces only until wet. Avoid excessive run-off. Apply to all insect hiding places. Also treat exposed surfaces where insects may crawl when they come out of hiding. Repeat treatment as necessary.

HOW TO MIX: Mix 1 pint of Residual Insect Spray in 1 gallon of water (4 oz. to 1 quart).

HOW TO USE:

Roaches - Thoroughly treat the infested area. Spray baseboards and cracks; around window and door frames; under surfaces of shelves, drawers and work tables; behind and beneath cabinets, refrigerators, sinks and stoves; in and around waste containers, floor drains and other places where roaches hide.

Flies, Gnats, Mosquitoes, Punkies, Sandflies, Flies (outdoors only) - Spray infested areas thoroughly including outside surfaces of screens, doors, window frames, foundations, patios and other areas where insects may enter.

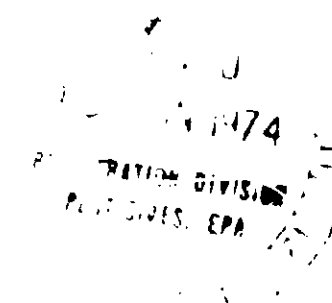
Ants - Apply to trails and places where ants enter buildings such as window and door sills. Spray hills and runways outdoors.

Spiders, Crickets, Centipedes, Millipedes, Earwigs, Scorpions, Sowbugs, Clover Mites - Thoroughly spray the interior and exterior borders of the infested buildings. For Clover Mites give special attention to window sills.

Silverfish, Firebrats - Apply to localized areas infested by these insects.

Brown Dog Ticks - Spray sleeping quarters of pets, around baseboards, window and door frames, wall cracks, and local areas of floors. Repeat as needed. Fresh bedding should be placed in animal quarters after spraying. DO NOT SPRAY ANIMALS.

Grain Insects - Aid in the control of Cadelle, Cigarette Beetle, Drugstore Beetle, Indian Meal Moth, Mediterranean Flour Moth, Red Flour Beetle, Saw-toothed Grain Beetle - Thoroughly treat floors and the walls of the infested area with attention to cracks, crevices, and corners. Sanitation and dust control are of primary importance. Fumigate or destroy infested products.



FOOD HANDLING ESTABLISHMENTS: Places other than private residences in which exposed food is held, processed or prepared. Do not use in serving area while food is exposed.

FOOD AREAS LIMITED TO (CRACK AND CREVICE TREATMENT ONLY) - Includes areas for receiving, serving, storage, packing (canning, bottling, wrapping, boxing) preparing, edible waste storage and enclosed processing systems (mills, dairies, edible oils, syrups). Mix 1 pint of Residual Insect Spray in 1 gallon of water. Apply in small amounts directly into cracks and crevices using a pin stream of insecticide in points between different elements of construction between equipment and floors, openings leading to voids and hollow spaces in walls, equipment legs and bases, conduits, motor housings, junction or switch boxes, where roaches, ants, centipedes, millipedes, silverfish, sowbugs, clovermites, and brown dog ticks hide. Care should be taken to avoid depositing the product onto exposed surfaces or introducing the material into the air. Avoid contamination of food or food processing surfaces.

APPLICATIONS OF THIS PRODUCT IN THE FOOD AREAS OF FOOD HANDLING ESTABLISHMENTS, OTHER THAN AS A CRACK AND CREVICE TREATMENT ARE NOT PERMITTED

NON-FOOD AREAS (spot application) - Includes garbage rooms, lavatories, floor drains (to sewers) entries and vestibules, offices, locker rooms, machine rooms, boiler rooms, garages, mop closets and storage (after canning or bottling). Mix 1 pint of Residual Insect Spray in 1 gallon of water and apply to baseboard areas, around water pipes, surfaces behind and beneath sinks, lockers, tables, pallets and similar areas where roaches, ants, centipedes, millipedes, silverfish, sowbugs, clovermites, and brown dog ticks hide or through which they may enter.

ANIMAL RESEARCH FACILITIES: The use of Residual Insect Spray in and around research animal quarters for insect control will not induce changes in liver microsomal enzyme activity in these animals.

RESTRICTIONS

Do not use, pour, spill, or store near heat or open flame.
Do not use as space spray. Provide adequate ventilation of areas being treated.
Do not allow children to contact treated areas until surfaces are thoroughly dry.
Do not store near feed or food products. Avoid contamination of feed, food, food processing equipment, and food handling surfaces. Do not apply to animals. Remove pets and cover fish tanks before spraying. Do not spray plants.

Do not apply to rugs, carpets, draperies, wallpaper, or similar materials that may be stained. Avoid excessive wetting of plastic, rubber and asphalt surfaces such as tiles and floor coverings. Do not allow small plastic sprayer to remain in product or sprayer may be damaged.

CAUTION

May be harmful if swallowed, inhaled or absorbed through the skin. Do not get in eyes, on skin or clothing. In case of contact, wash immediately with soap and water before eating or smoking. Wash all contaminated clothing with soap and water before re-use. Should illness occur, get prompt medical aid.
TO PHYSICIAN - Atropine sulfate is antidotal.

Do not re-use empty container. Destroy when empty and discard in a safe place.

EPA EST. 602-MO-1

QUALITY CONTROLLED BY PURINA RESEARCH

