

PURINA STARLICIDE

A slow acting Avicide for the control
of starlings and blackbirds around
livestock and poultry operations.

ACTIVE DRUG INGREDIENT

INERT INGREDIENTS

CAUTION: KEEP OUT OF REACH OF CHILDREN

SEE BACK PANEL FOR COMPLETE CAUTION

RALSTON PURINA COMPANY

HOW TO USE PURINA STARLICIDE

The application of Purina Starlicide should be made at the proper time and place under the direction of personnel trained in bird damage control. Normally, the starling's diet consists of insects and fruits; but in winter months when food is in short supply, they're attracted to feedlot areas. Best results are obtained where starlings have few alternate foods. Careful observation of starling habits should be made to establish preferred feeding sites and to determine that no protected bird species are present that may feed on the bait. Prebaiting may be necessary for successful use of the agent.

This product is not effective against English or house sparrows.

BAIT PREPARATION. For most uniform distribution of the bait, dilute 10 pounds of Purina Starlicide with 100 pounds of a pelleted poultry laying ration. (For example, Purina's Prolay Eggena.)

CAUTION. Because of the toxic nature of this material, all blending should be done in garbage cans or buckets so that local mixing units will not become contaminated. Do not use feed mixing equipment for blending this product.

FOR LIVESTOCK FEEDLOTS. Place in feeding stations or scatter the diluted Purina Starlicide thinly and uniformly over dry or frozen areas of empty pens, alleyways, and other areas inaccessible to livestock. Application should be made before starlings arrive for their first morning meal. One baiting may last up to three days.

The quantity of diluted Purina Starlicide required is approximately ten pounds per 2,000 starlings and/or blackbirds feeding in the area. However, baiting rates should not exceed twenty pounds of diluted Purina Starlicide per acre for large lots (over ten acres) nor exceed fifty pounds per acre for small lots (under ten acres).

FOR POULTRY OPERATIONS. Place in feeding stations or scatter the diluted Purina Starlicide thinly and uniformly over dry or frozen areas on the perimeter of pens, buildings, or range areas. Application should be made before starlings arrive for their first morning meal. One baiting may last up to three days. Because Purina Starlicide is toxic to chickens, turkeys or other poultry, it should not come in contact with these species.

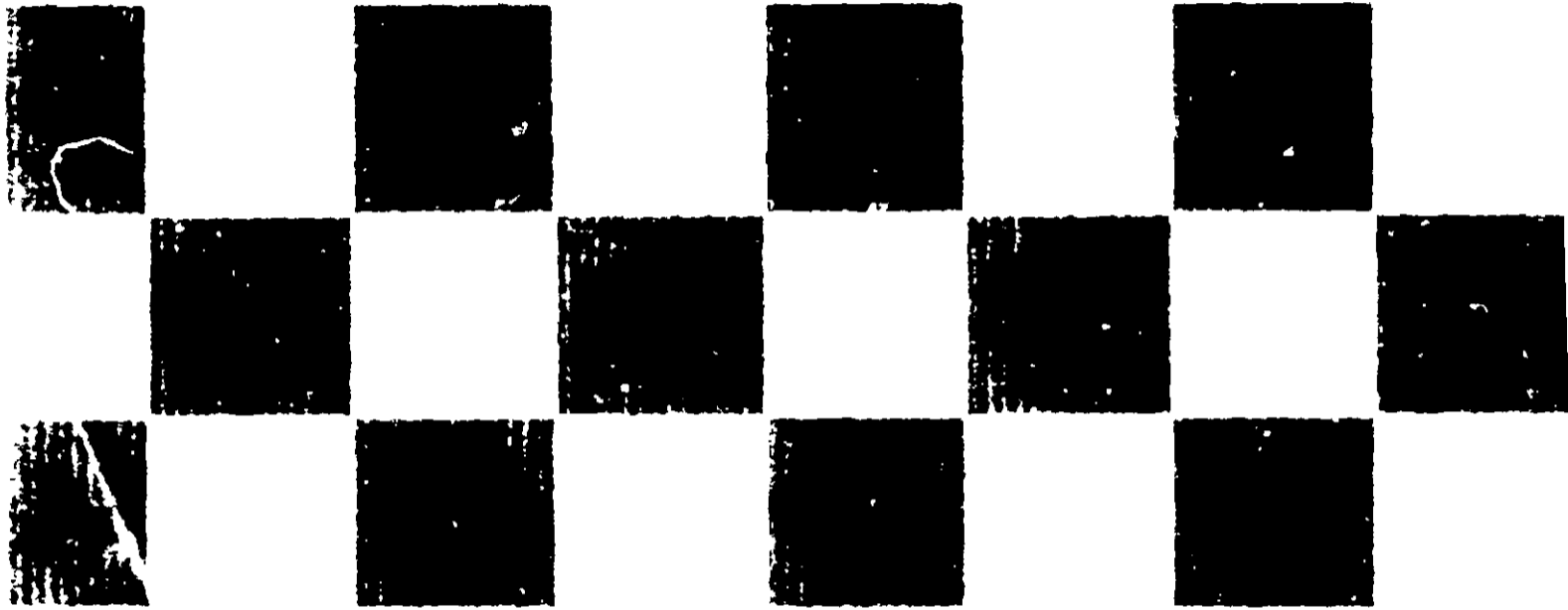
The quantity of diluted Purina Starlicide required is approximately ten pounds per 2,000 starlings and/or blackbirds feeding in the area. However, baiting rates should not exceed twenty pounds of diluted Purina Starlicide per acre for large lots (over ten acres) nor exceed fifty pounds per acre for small lots (under ten acres).

NOTE: Do not expect to find large numbers of dead starlings and/or blackbirds in the baited area as most die within one to three days after consuming the treated pellets. Most die at their roost and along flight lines to the feeding areas. If starlings or blackbirds continue to be a problem, reassess the problem and consider prebaiting. Do not rebait within three days of initial application as some birds consuming a lethal dose of Purina Starlicide may require three days to be affected.

CAUTION: Purina Starlicide must not be used in any manner that may endanger desirable and protected bird species and domestic fowl. If there is a question of hazard or legality, consult local, state and federal game authorities before undertaking starling control with Purina Starlicide.

Do not contaminate streams, lakes or ponds with this material.

Handle with protective gloves. Wash hands thoroughly with soap and water after handling. Avoid contact with eyes, skin and clothing. If swallowed, induce vomiting and call a physician.



ACTIVE DRUG INGREDIENTS:
3-chloro p-toluidine hydrochloride

INERT INGREDIENTS

CAUTION: KEEP OUT OF REACH OF CHILDREN

SEE BACK PANEL FOR ADDITIONAL CAUTIONS

Manufactured by

RALSTON PURINA COMPANY

GENERAL OFFICES • CHECKERBOARD SQUARE • ST. LOUIS, MO.