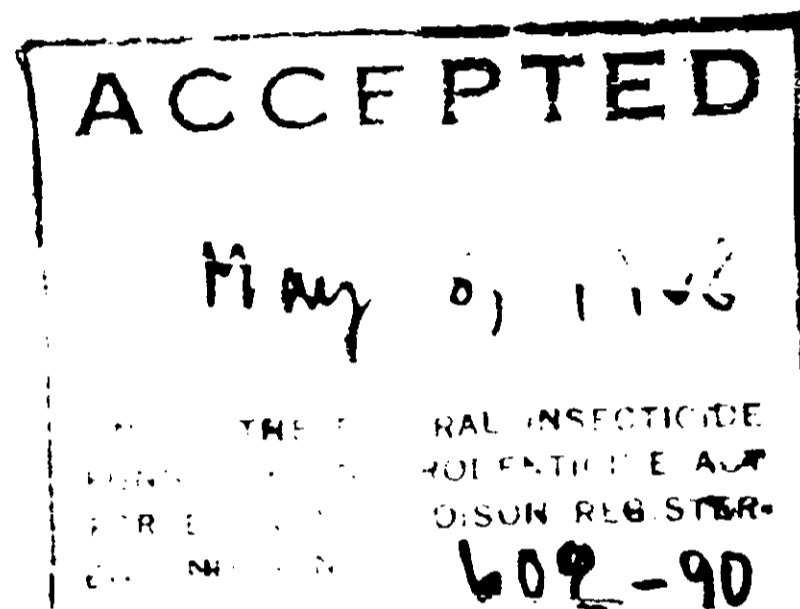
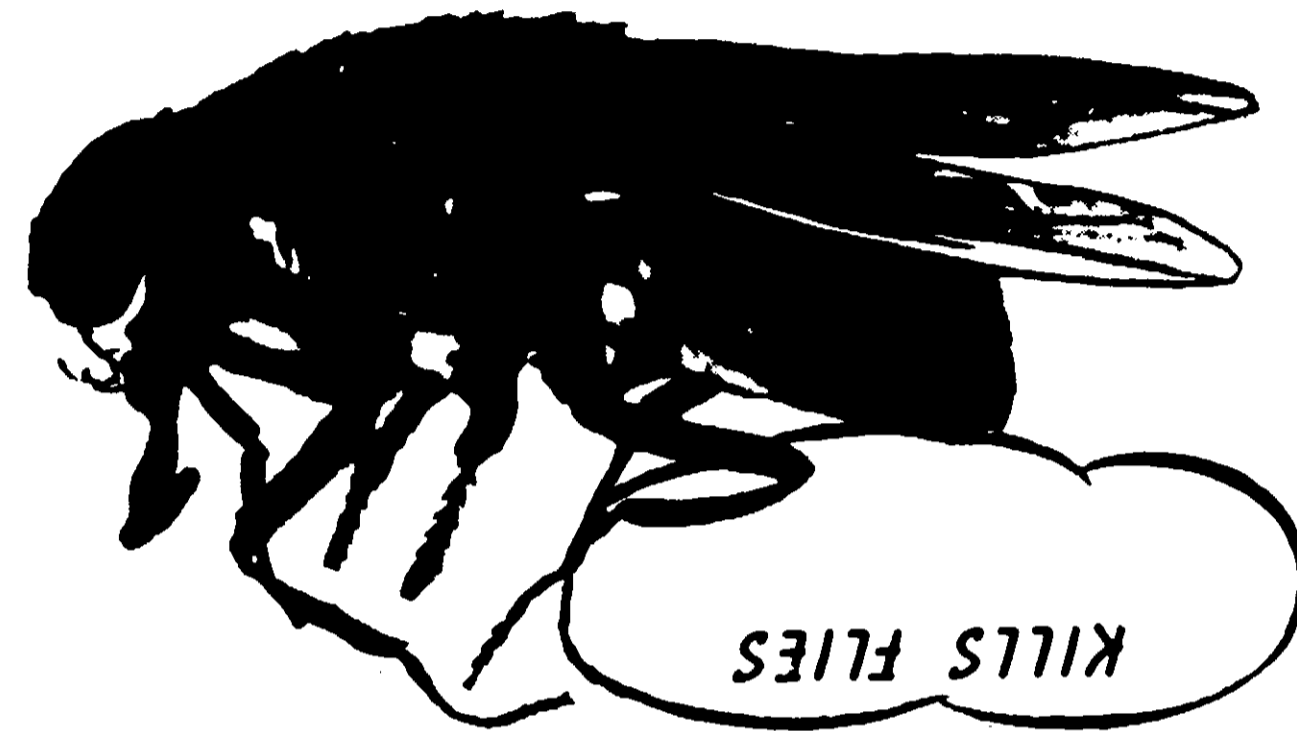


PURINA FLY CHECKER



PURINA FLY CHECKER

- Kills on Contact
- Long Lasting
- Low Cost
- Easy to Use

DIRECTIONS Remove protective wrapper and place Fly Checker where flies gather. See insert for detailed instructions.

WARNING: May be fatal if eaten. Avoid contact with skin. Wash hands thoroughly after handling. Avoid contamination of food or feedstuffs. DO NOT place Fly Checker so dead flies or the insecticide may fall into feed or drinking water. DO NOT store or place within reach of children or pets. Use on porches, patios, but not in the house. If swallowed, induce vomiting and call a doctor at once. Atropine is antidotal.

Manufactured by RALSTON PURINA COMPANY
General Offices, Checkerboard Square, St. Louis, Mo.

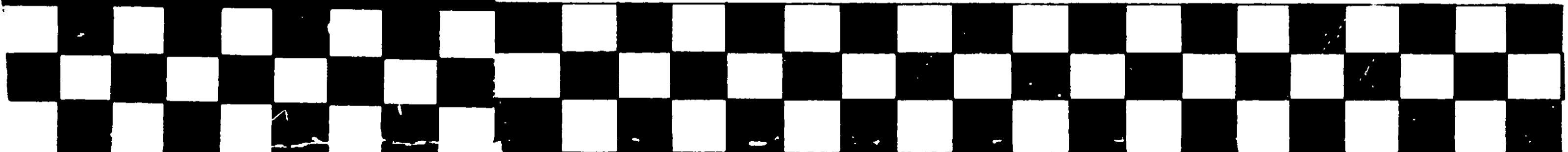
666F

USDA Reg. No. 602-90

Printed in U.S.A.

KEEP IN COOL PLACE UNTIL USED

QUALITY CONTROLLED BY PURINA RESEARCH



Active Ingredients:	
2,2-Dichlorovinyl dimethyl phosphate.....	0.23%
Related compounds	0.02%
Dimethyl (2,2,2-trichloro-1-hydroxyethyl) phosphonate*	0.25%
Inert Ingredients:	99.50%
	<u>100.00%</u>

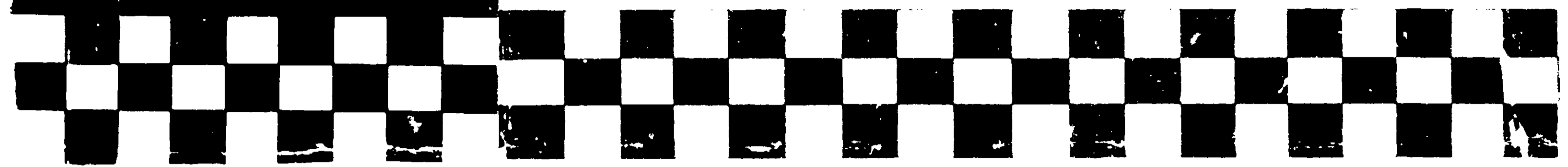
666F

USDA Reg. No. 602-90

Printed in U.S.A.

KEEP IN COOL PLACE UNTIL USED

QUALITY CONTROLLED BY PURINA RESEARCH



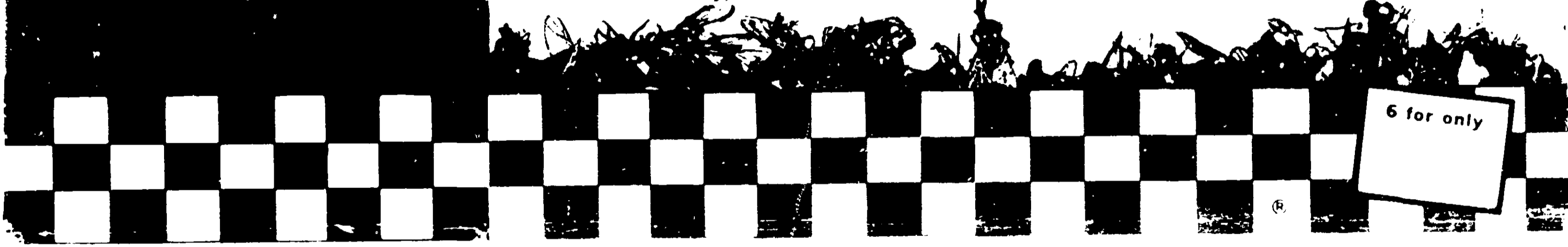
Active Ingredients:	
2,2-Dichlorovinyl dimethyl phosphate	0.23%
Related compounds	0.02%
Dimethyl (2,2,2-trichloro-1-hydroxyethyl) phosphonate	0.25%
Inert Ingredients:	99.50%
	<hr/>
	100.00%

PURINA FLY CHECKER
 (New Form, New Formula)
 See for yourself how Purina Fly Checkers knock flies cold on contact!

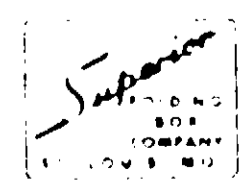
PURINA® FLY CHECKER®
ATTRACTS FLIES—POWERFUL—KILLS FAST!

KILLS FLIES EFFECTIVELY in barns, feedlots, Pig Parlors, poultry houses, stables, dog kennels — wherever flies gather.

CAUTION: Keep Out of Reach of Children. See other warnings on back panel.



Reg. U.S. Pat. Off. by Farbenfabriken Bayer, A. G.
 Chemagro Corporation licensee



656C Pat. No. 3,160,556 Printed in U.S.A.

Contains 0.25% Dpterox* + 0.25% DDVP
WARNING: May be fatal if eaten. Avoid contact with skin. Wash hands thoroughly after handling. Avoid contamination of food and feedstuffs. Do not store or use within reach of children or animals. Do not use inside the home. If swallowed, induce vomiting; repeat until vomit fluid is clear. Call a physician immediately. Atropine is antidotal.

NET WEIGHT 2.5 OZ. AVDP. U.S.D.A. REG. NO. 602-90

PURINA FLY CHECKER®

KEEP IN COOL PLACE UNTIL USED



Active Ingredients:	
2,2-Dichlorovinyl dimethyl phosphate	0.23%
Related compounds	0.02%
0,0-Dimethyl 2,2,2-trichloro-1-hydroxyethyl phosphonate*	0.25%
Inert Ingredients:	99.50%
	100.00%

*Reg. U. S. Pat. Off. by Farbenfabriken Bayer, A. G. Chemagro Corporation Licensee. U. S. PAT. No. 2,701,225

CAUTION: KEEP OUT OF REACH OF CHILDREN. SEE OTHER WARNINGS ON END PANEL. Mfd. by RALSTON PURINA CO. Gen. Off. • Checkerboard Square • St. Louis, Mo.

DIRECTIONS: Use one Fly Checker per 100 square feet in farm buildings where flies gather. Place on ledges, window sills, top of bulk feeders, or on floor areas out of reach of animals and children. Use Fly Checkers to supplement other fly control measures. Use on porches, patios, and around commercial outdoor areas.

QUALITY CONTROLLED BY PURINA RESEARCH

656C Pat. No. 3,160,556 Printed in U.S.A.

Contains 0.25% Dpterox* + 0.25% DDVP
WARNING: May be fatal if eaten. Avoid contact with skin. Wash hands thoroughly after handling. Avoid contamination of food and feedstuffs. Do not store or use within reach of children or animals. Do not use inside the home. If swallowed, induce vomiting; repeat until vomit fluid is clear. Call a physician immediately. Atropine is antidotal.

NET WEIGHT 2.5 OZ. AVDP. U.S.D.A. REG. NO. 602-90

PURINA FLY CHECKER®

KEEP IN COOL PLACE UNTIL USED



Active Ingredients:	
2,2-Dichlorovinyl dimethyl phosphate	0.23%
Related compounds	0.02%
0,0-Dimethyl 2,2,2-trichloro-1-hydroxyethyl phosphonate*	0.25%
Inert Ingredients:	99.50%
	100.00%

*Reg. U. S. Pat. Off. by Farbenfabriken Bayer, A. G. Chemagro Corporation Licensee. U. S. PAT. No. 2,701,225

CAUTION: KEEP OUT OF REACH OF CHILDREN. SEE OTHER WARNINGS ON END PANEL. Mfd. by RALSTON PURINA CO. Gen. Off. • Checkerboard Square • St. Louis, Mo.

DIRECTIONS: Use one Fly Checker per 100 square feet in farm buildings where flies gather. Place on ledges, window sills, top of bulk feeders, or on floor areas out of reach of animals and children. Use Fly Checkers to supplement other fly control measures. Use on porches, patios, and around commercial outdoor areas.

QUALITY CONTROLLED BY PURINA RESEARCH

*Reg. U. S. Pat. Off. by Farbenfabriken Bayer, A. G. - Elberfeld
Corporation Licensee. U. S. PAT. No. 2,701,225

**CAUTION: KEEP OUT OF REACH OF CHILDREN.
SEE OTHER WARNINGS ON END PANEL.**
Mfd. by RALSTON PURINA CO.
Gen. Off. • Checkerboard Square • St. Louis, Mo.

DIRECTIONS: Use one Fly Checker per 100 square feet in farm buildings where flies gather. Place on ledges, window sills, top of bulk feeders, or on floor areas out of reach of animals and children. Use Fly Checkers to supplement other fly control measures. Use on porches, patios, and around commercial outdoor areas.
QUALITY CONTROLLED BY PURINA RESEARCH

Corporation Licensee.

**CAUTION: KEEP OUT OF REACH OF CHILDREN.
SEE OTHER WARNINGS ON END PANEL.**
Mfd. by RALSTON PURINA CO.
Gen. Off. • Checkerboard Square • St. Louis, Mo.

DIRECTIONS: Use one Fly Checker per 100 square feet in farm buildings where flies gather. Place on ledges, window sills, top of bulk feeders, or on floor areas out of reach of animals and children. Use Fly Checkers to supplement other fly control measures. Use on porches, patios, and around commercial outdoor areas.
QUALITY CONTROLLED BY PURINA RESEARCH

PURINA® FLY CHECKER®

What it is: Purina Fly Checker is a solid fly bait containing D.D.V.P. and Dipterex* plus taste attractants. It can be used around dairy barns, stables, pig parlors, feedlots, loafing barns, poultry houses, kennels, fur bearing animal units, homes, and commercial outdoor areas.

Directions for Use: Remove protective wrapper and place Fly Checkers on floors, ledges, window sills or other surfaces out of reach of children and animals. Make sure dead flies or insecticides do not fall into feed or drinking water. Use enough Fly Checkers to supplement other fly control measures.

Dairy barns, stables, and other closed building: Place Fly Checker inside buildings near doorways, on window ledges, or other areas where flies gather. Use one Fly Checker for each 100 square feet of surface area.

Feedlots, loafing barns, pig parlors, and other open buildings: Place Fly Checker along edges of rafters, on ledges, on top of bulk feeders, or along fences where animals cannot lick it.

Caged layer buildings and turkeys on wire: Place Fly Checker on edge of rafters or along side of dropping pit at rate of one per 100 square feet.

(over)

ACCEPT

May 1952

UNDER THE PURINA
FUNGICIDE AND
TOP FEEDING
PROGRAM

602 90