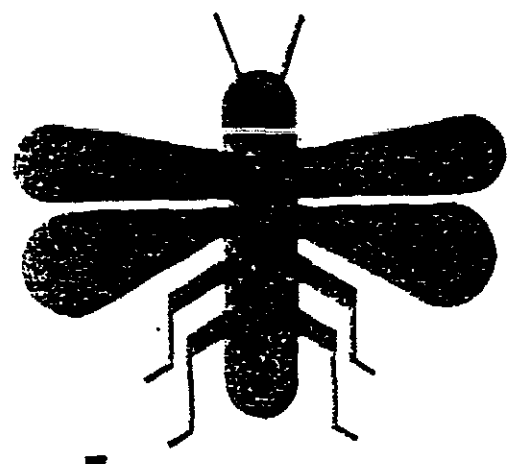


Print by 12/89 PM 19 572-321
 1-24-90 1/2

3/89 - Changes per Registrant
 std complete
 Change use category
 to Beech

Rockland®

**Wasp &
 Yellow
 Jacket Bomb**



Not Reviewed: Registrant claims to be in accordance with
 Reregistration of Pesticide Product Guidance for Phase 2
 Response, Page 2.12, Active to Inert Change in Status.

- A Synthetic Pyrethroid for Controlling the following flying and crawling insects: Wasps, Hornets, Yellow Jackets, Bees, and others listed.
- Jet Stream up to 12 Foot Range
- Dielectric Strength - Non-Conducting up to 26,500 volts.

BEST AVAILABLE COPY

ACTIVE INGREDIENTS	
*****Resmethrin.....	0.25% w/w
+INERT INGREDIENTS.....	99.76%
	100.00%

+This product contains petroleum distillate.

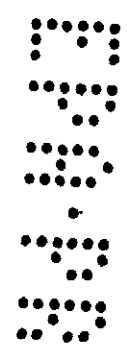
*Cis/trans isomers ratio: max. 30% (±)trans.
 **U.S. Patent Nos. 3,465,007 and 3,542,928.
 ***Penick-Bio UCLAF's SPB-1382® brand of resmethrin insecticide.
 Penick-Bio UCLAF Corp., 1050 Wall Street West Lyndhurst N.J. 07071

EPA Reg. No. 572-321 EPA Est. No. 5693-MA-1

KEEP OUT OF REACH OF CHILDREN
CAUTION

See back panel for additional precautionary statements.

Net Weight 14 Oz



PRECAUTIONARY STATEMENTS

HAZARD TO HUMANS. CAUTION. Harmful if swallowed or absorbed through skin. Avoid breathing mist. Cover or remove exposed foods. Avoid contamination of cooking utensils and food preparation surfaces. Remove pets and cover fish aquariums before spraying.

ENVIRONMENTAL HAZARDS: This pesticide is highly toxic to fish. Do not apply directly to water or wetlands (swamps, bogs, marshes, and potholes). Drift and runoff from treated sites may be hazardous to fish in adjacent waters. Do not contaminate water when disposing of equipment washwaters.

STATEMENT OF PRACTICAL TREATMENT

In case of contact, immediately flush skin and eyes with plenty of water for at least 15 minutes. Get medical attention if irritation persists.

PHYSICAL & CHEMICAL HAZARDS

Contents under pressure. Do not puncture. **DO NOT USE OR STORE NEAR HEAT OR OPEN FLAME.** Exposure to temperature above 130°F may cause bursting. Never throw container into fire or incinerate.

DIRECTIONS FOR USE

It is a violation of Federal Law to use this product in a manner that is inconsistent with its labeling.

For use in and around **HOTELS, MOTELS, HOMES, GREENHOUSE, AND LATHOUSES, SEEDHOUSE, COMMERCIAL, INDUSTRIAL, OFFICE, INSTITUTIONAL and STORAGE BUILDINGS, SUPERMARKETS, RESTAURANTS, BOTTLING PLANTS, BOATS, SHIP CABINS, and HOSPITALS.** IN HOSPITALS, patients should be removed prior to treatment. Also for use in buses, automobiles, trucks, boxcars and ship cargo holds. Also for use in dog kennels and horse stables. In horse stables, not for application if horses will be used for food.

STORAGE: Keep in a locked storage area.

DISPOSAL: Securely wrap original container in several layers of newspapers and discard in trash.

TO KILL ANTS, COCKROACHES, SPIDERS, EARWIGS, GRAIN MITES, SOWBUGS, CRICKETS, BEETLES, SILVERFISH, CENTIPEDES, AND MILLIPEDES: Direct spray to contact these insects in cracks and crevices in floors, baseboards, around pipes, behind cabinets, and other harborages. Spray these infested areas until thoroughly wet. Repeat as necessary.

TO KILL ANTS: Spray these infested areas until thoroughly wet. Repeat as necessary.

TO KILL SPIDERS: Spray directly on these pests and use repeated applications to the webbing and all cracks and crevices which harbor spiders.

OUTDOORS: Apply as a contact spray. Spray directly on insects. Aim spray opening away from person. Avoid spraying plants or turf except to spray infested areas.

ANTS: Same as directed above for indoor use.

WASPS, HORNETS, YELLOW JACKETS, BEES: Same as directed for indoor use. Aim spray at nests openings in trees, bushes, under eaves, chimneys, cracks and crevices to saturate in and around nest openings. Contact as many insects as possible. Repeat as necessary.

EARWIGS, SOWBUGS, CRICKETS, BEETLES, SILVERFISH, CENTIPEDES AND MILLIPEDES: Apply as a contact spray, as for indoor use.

TO KILL TENT CATERPILLARS: Application should be made when caterpillars are young and tents are first noticed. For best results apply in the late afternoon or evening, when caterpillars have returned to their tents. Aim spray directly at tents, and totally saturate on all sides. Repeat as necessary.

WARRANTY: Our recommendations for use of this product are based upon tests believed to be reliable. The use of this product being beyond the control of the manufacturer. No guarantee, expressed or implied, is made as to the effects of such or the results to be obtained if not used in accordance with directions or established safe practice. The buyer must assume all responsibility, including injury or damage, resulting from its misuse as such, or in combination with other materials.

Manufactured for:



Rockland Chemical Co., Inc.
West Caldwell, N.J. 07007

A32114

~~A3211-0600~~

1089

BEST AVAILABLE COPY